



**GPD GROUP, INC.®**

**PANERA BREAD  
BAXTER, MN  
CONCEPT PLAN & ELEVATIONS**

OCTOBER 9, 2025

# EXTERIOR MATERIALS

## BRICK

MORTAR: G25 - #58 / TERRACOTTA



**BR1:** THIN BRICK | UTILITY SIZE  
**BR1C:** THIN BRICK | UTILITY SIZE CORNERS

**BR2:** THIN BRICK | STD. SIZE  
**BR2C:** THIN BRICK | STD. SIZE CORNERS

**BR2A:** FULL BRICK | STD. SIZE

SUPPL: CREATIVE MATERIALS  
MFR: MCNEAR  
COLOR: SANTIAGO BLEND  
\$: 5.44/SF

## BRICK ACCENT

MORTAR: G33 - #40 / LATTE



**BR3:** THIN BRICK | UTILITY SIZE  
**BR3A:** FULL BRICK | UTILITY SIZE

**BR4:** THIN BRICK | STD. SIZE  
**BR4A:** FULL BRICK | STD. SIZE

SUPPL: CREATIVE MATERIALS  
MFR: ENDICOTT  
COLOR: GOLDEN BUFF  
\$: 7.77/SF

## EIFS



**EIFS1** EXTERIOR  
SUPPL: DRYVIT  
MFR: DRYVIT  
STYLE: LYMESTONE  
COLOR: 105 SUEDE  
\$: 4-6/SF

**EIFS2** EXTERIOR  
SUPPL: DRYVIT  
MFR: DRYVIT  
STYLE: LYMESTONE  
COLOR: PANERA BREAD GREEN - PMS 2307C  
\$: 4-6/SF

## SPECIALTY FINISH

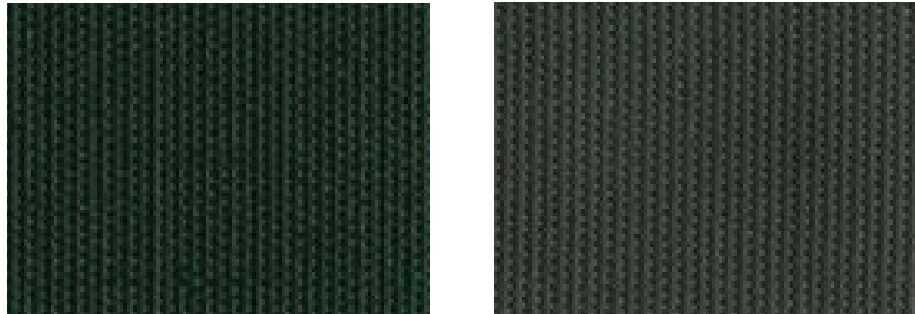


**SF5** EXTERIOR CLADDING  
SUPPL: NICHIIA  
MFR: NICHIIA  
STYLE: VINTAGEWOOD WOOD SERIES  
COLOR: SPRUCE  
\$: 9/SF

**SF2** UTILITY SCREEN | TRASH GATE  
SUPPL: GC  
MFR: TREX  
STYLE: TREX SELECT  
COLOR: PEBBLE GREY  
\$: 8.79/SF

**SF4** ENTRY TOWER | DT BUMP OUT  
SUPPL: NICHIIA  
MFR: NICHIIA  
STYLE: DIMENSION SERIES | RIBBED, AWP 3030  
COLOR: PMS 2307C  
INSTALL: HORIZONTAL  
\$: 10-11/SF

## AWNINGS



**EF5** AWNING  
SUPPL: SIGNAGE VENDOR  
MFR: COOLEY  
STYLE: WEATHERTYTE PLUS  
COLOR: FOREST GREEN  
\$: VARIES

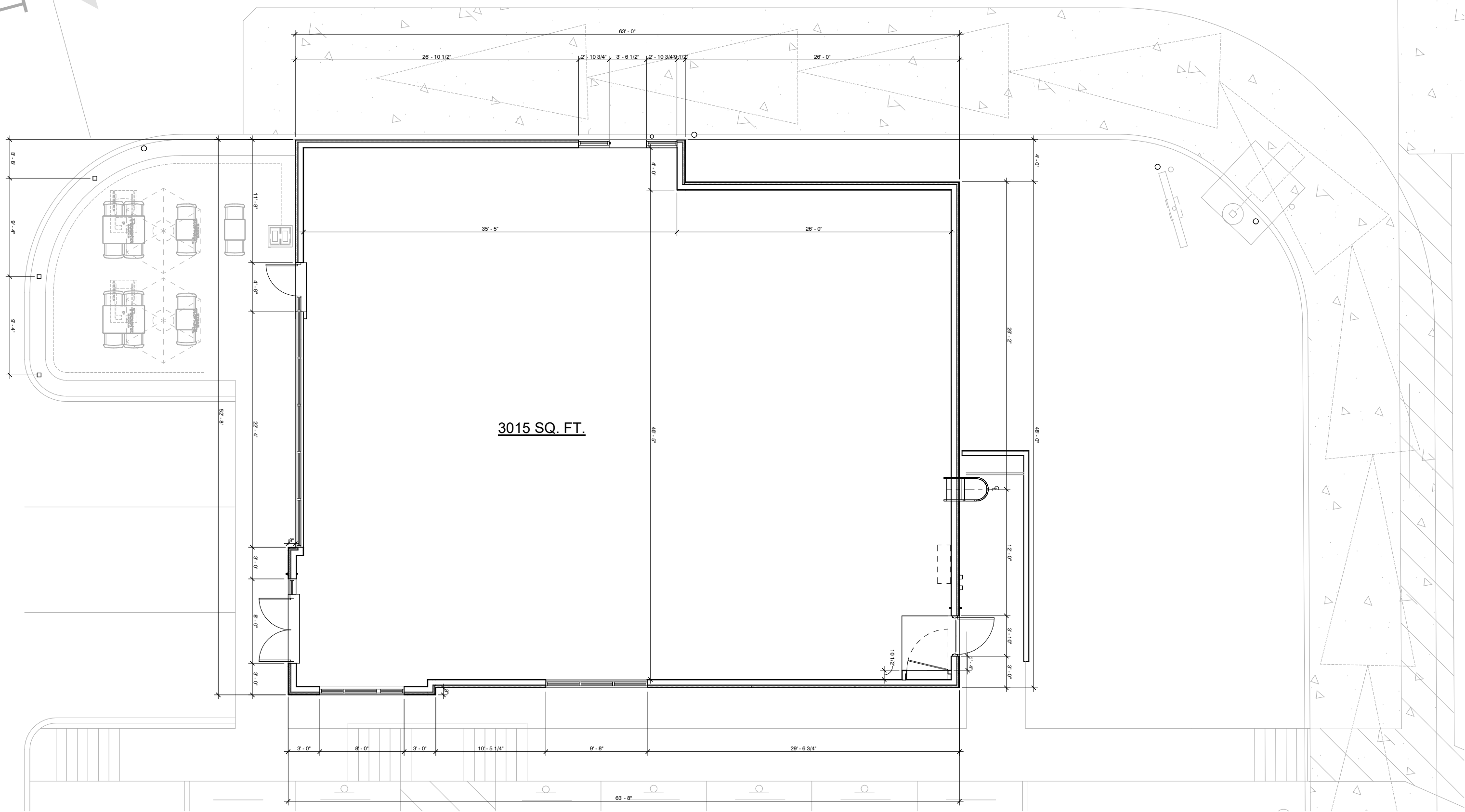
**EF6** AWNING  
SUPPL: SIGNAGE VENDOR  
MFR: COOLEY  
STYLE: WEATHERTYTE PLUS  
COLOR: CHARCOAL  
\$: VARIES



PANERA BREAD | BAXTER, MN



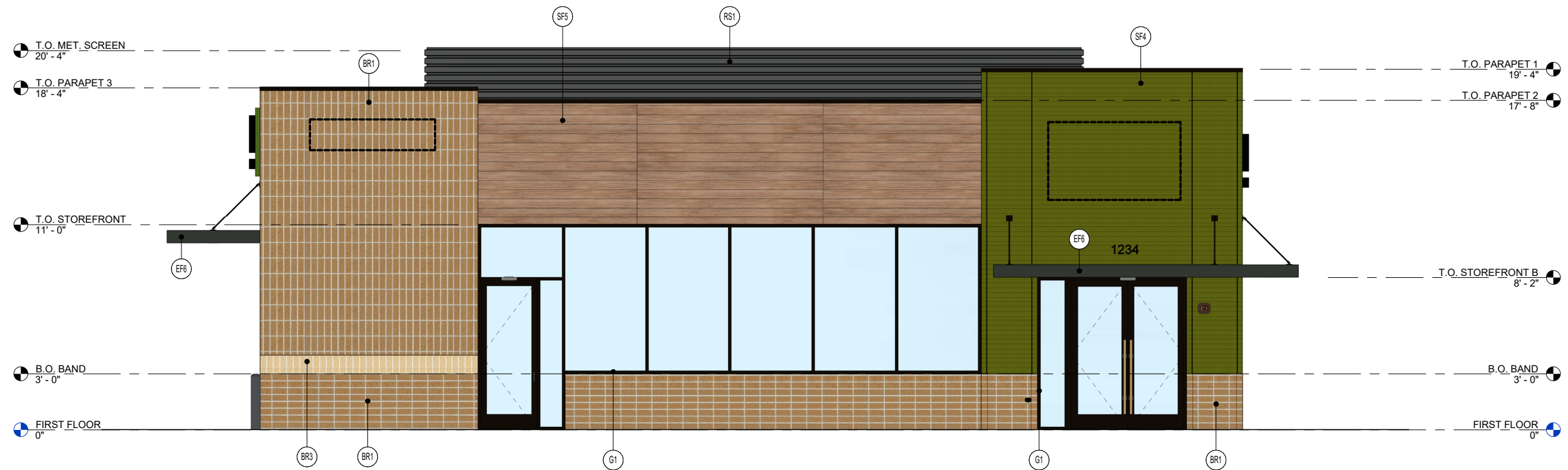
# PROPOSED FLOOR PLAN



PANERA BREAD | BAXTER, MN

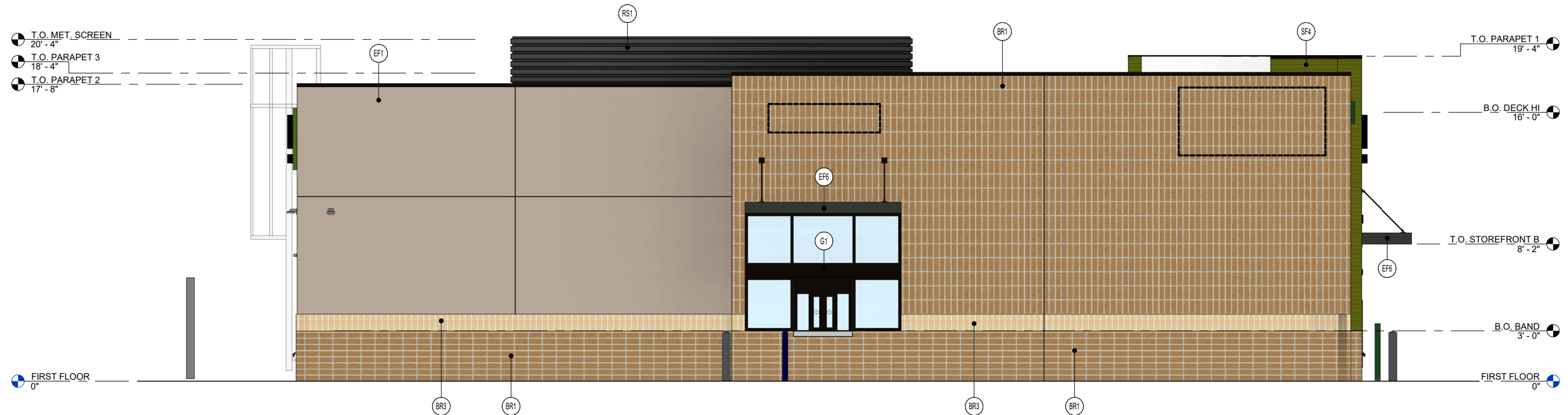


# EXTERIOR ELEVATIONS



**EXTERIOR MATERIALS**

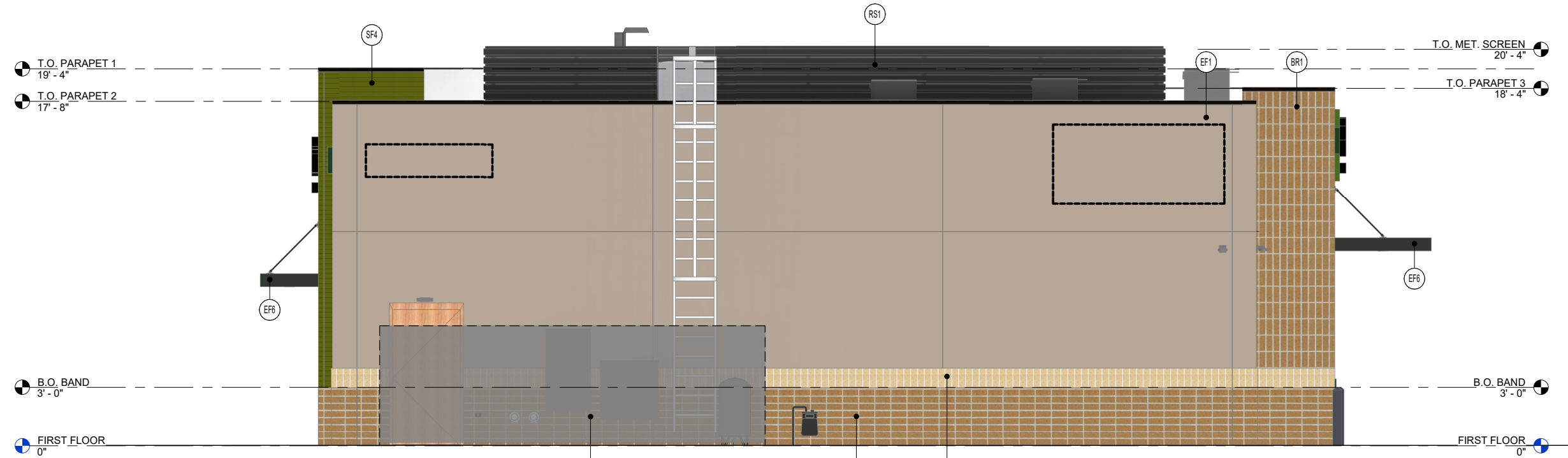
- BR1 THIN BRICK MASONRY, TABS WALL SYSTEM | PATTERN: HORIZONTAL OR VERTICAL STACKED BOND (SEE ELEVATIONS) | SIZE: UTILITY | SUPPLIER: CREATIVE MATERIALS | MFR: MCNEAR | COLOR: SANTIAGO CREATE MATERIALS CUSTOM BLEND
- BR3 THIN BRICK MASONRY BAND, TABS WALL SYSTEM | PATTERN: VERTICAL STACKED BOND (SEE ELEVATIONS) | SIZE: UTILITY | SUPPLIER: CREATIVE MATERIALS | MFR: ENDICOTT | COLOR: GOLDEN BUFF
- EF1 EXTERIOR INSULATION FINISH SYSTEM, SUPPLIER: DRYVIT "OUTSULATION PLUS MD" W/ MOISTURE DRAINAGE SYSTEM | COLOR: #105 SUEDE | TEXTURE: DRYVIT "LYMESTONE" DPR TEXTURED FINISH
- RS1 SPECIALITY FINISH: UTILITY SCREEN + TRASH GATE COMPOSITE PLANK SCREEN WALL | SUPPLIER: GC | MFR: TREX | STYLE: TREX | COLOR: PEBBLE GRAY
- SF4 SPECIALITY FINISH: RIBBED FIBER CEMENT PANEL WALL PANELS | SUPPLIER: NICHHA | MFR: NICHHA | STYLE: RIBBED DIMENSION SERIES | COLOR: PANERA GREEN TO MATCH PANTONE PMS 2307 C
- SF5 SPECIALITY FINISH: FIBER CEMENT PLANK 6" | MFR: NICHHA, VINTAGEWOOD | COLOR: SPRUCE
- G1 ALUMINUM STOREFRONT SYSTEM, MFR: KAWNEER, TRIFAB VERRSAGLAZE 4511 | COLOR: DARK BRONZE | SIZE: 2" x 4 1/2" PROFILE W/ THERMAL BREAK | GLAZING: 1" INSULATED GLAZING | MFR: PPG, SOLARBAN 70 LOW-E, 1" INSULATED (OR EQUAL)
- EF6 PREMANUFACTURED AWNING | MFR: SIGNAGE VENDOR | STYLE: WEATHERTYPE PLUS | COLOR: CHARCOAL (OR APPROVED EQUAL)



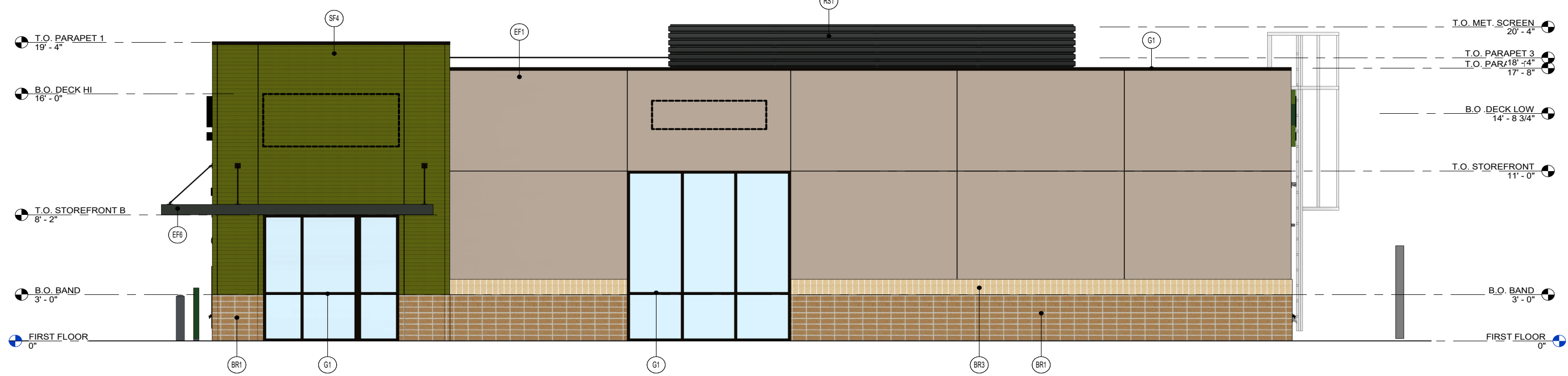
PANERA BREAD | BAXTER, MN



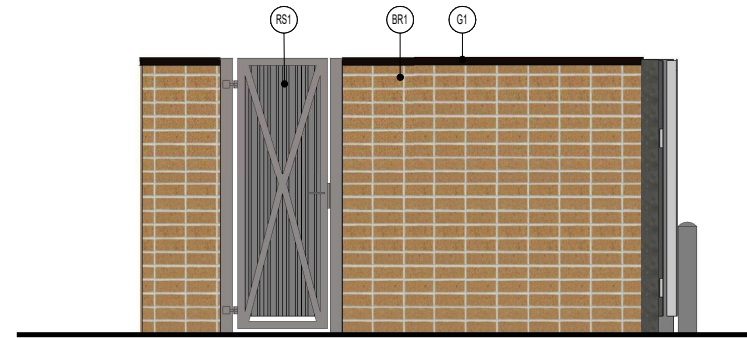
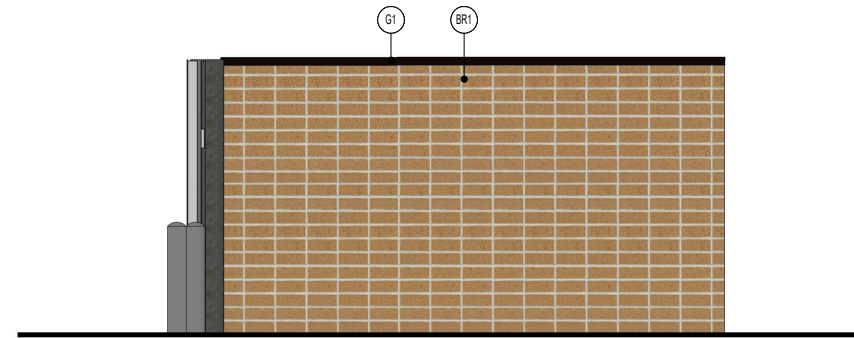
# EXTERIOR ELEVATIONS



- EXTERIOR MATERIALS**
- BR1 THIN BRICK MASONRY, TABS WALL SYSTEM | PATTERN: HORIZONTAL OR VERTICAL STACKED BOND (SEE ELEVATIONS) | SIZE: UTILITY | SUPPLIER: CREATIVE MATERIALS | MFR: MCNEAR | COLOR: SANTIAGO CREATE MATERIALS CUSTOM BLEND
  - BR3 THIN BRICK MASONRY BAND, TABS WALL SYSTEM | PATTERN: VERTICAL STACKED BOND (SEE ELEVATIONS) | SIZE: UTILITY | SUPPLIER: CREATIVE MATERIALS | MFR: ENDICOTT | COLOR: GOLDEN BUFF
  - EF1 EXTERIOR INSULATION FINISH SYSTEM, SUPPLIER: DRYVIT "OUTSULATION PLUS MD" W/ MOISTURE DRAINAGE SYSTEM | COLOR: #105 SUEDE | TEXTURE: DRYVIT "LYMESTONE" DPR TEXTURED FINISH
  - RS1 SPECIALITY FINISH: UTILITY SCREEN + TRASH GATE COMPOSITE PLANK SCREEN WALL | SUPPLIER: GC | MFR: TREX | STYLE: TREX | COLOR: PEBBLE GRAY
  - SF4 SPECIALITY FINISH: RIBBED FIBER CEMENT PANEL WALL PANELS | SUPPLIER: NICHHA | MFR: NICHHA | STYLE: RIBBED DIMENSION SERIES | COLOR: PANERA GREEN TO MATCH PANTONE PMS 2307 C
  - SF6 SPECIALITY FINISH: FIBER CEMENT PLANK 6" | MFR: NICHHA, VINTAGEWOOD | COLOR: SPRUCE
  - G1 ALUMINUM STOREFRONT SYSTEM: MFR: KAWNEER, TRIFAB VERRSAGLAZE 451T | COLOR: DARK BRONZE | SIZE: 2" x 4 1/2" PROFILE w/ THERMAL BREAK | GLAZING: 1" INSULATED GLAZING | MFR: PPG, SOLARBAN 70 LOW-E, 1" INSULATED (OR EQUAL)
  - EF6 PREMANUFACTURED AWNING | MFR: SIGNAGE VENDOR | STYLE: WEATHERTYPE PLUS | COLOR: CHARCOAL (OR APPROVED EQUAL)



# TRASH ENCLOSURE



## EXTERIOR MATERIALS

- BR1 THIN BRICK MASONRY, TABS WALL SYSTEM | PATTERN: HORIZONTAL OR VERTICAL STACKED BOND (SEE ELEVATIONS) | SIZE: UTILITY | SUPPLIER: CREATIVE MATERIALS | MFR: MCNEAR | COLOR: SANTIAGO CREATE MATERIALS CUSTOM BLEND
- G1 ALUMINUM STOREFRONT SYSTEM/COPING: MFR: KAWNEER, TRIFAB VERRSAGLAZE 451T | COLOR: DARK BRONZE | SIZE: 2" x 4 1/2" PROFILE w/ THERMAL BREAK | GLAZING: 1" INSULATED GLAZING | MFR: PPG, SOLARBAN 70 LOW-E, 1" INSULATED (OR EQUAL)
- RS1 SPECIALTY FINISH: UTILITY SCREEN + TRASH GATE COMPOSITE PLANK SCREEN WALL | SUPPLIER: GC | MFR: TREX | STYLE: TREX | COLOR: PEBBLE GRAY

