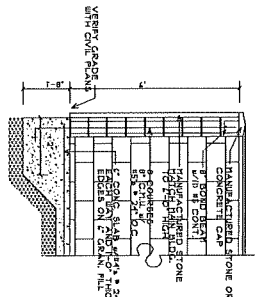
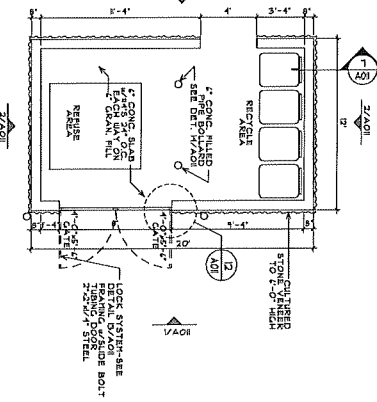


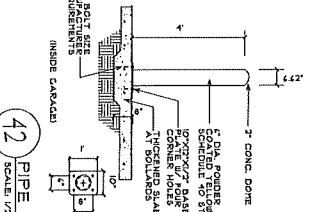
14 PIPE BOLLARD DETAIL  
SCALE: 1/2" = 1'-0"



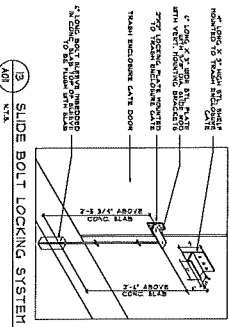
7 TRASH ENCLOSURE SECTION  
SCALE: 1/2" = 1'-0"



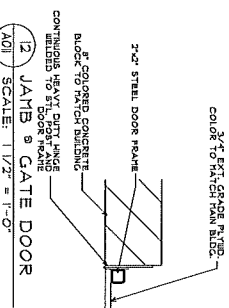
6 TRASH ENCLOSURE PLAN  
SCALE: 1/4" = 1'-0"



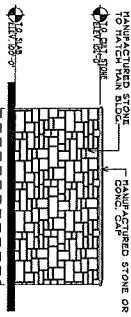
42 PIPE BOLLARD  
SCALE: 1/2" = 1'-0"



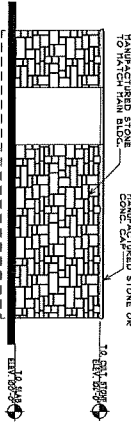
3 SLIDE BOLT LOCKING SYSTEM  
SCALE: 1/2" = 1'-0"



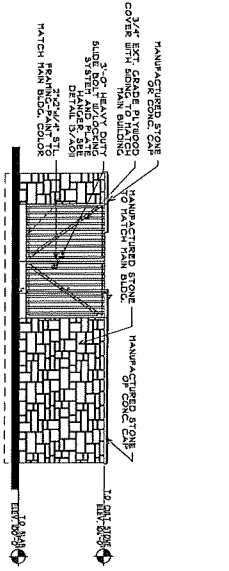
12 JAMB & GATE DOOR  
SCALE: 1/2" = 1'-0"



2 SIDE ELEVATION  
SCALE: 1/4" = 1'-0"



3 REAR ELEVATION  
SCALE: 1/4" = 1'-0"



1 FRONT ELEVATION  
SCALE: 1/4" = 1'-0"

PLOTTED 10-12-23 PLS. 254115 C004.1

A011

DESIGNED BY	DATE	REVISION
DRAWN BY	DATE	REVISION
CHECKED BY	DATE	REVISION
APPROVED BY	DATE	REVISION

PROPOSED:  
**BAXTER ALF + DC**  
BAXTER, MN

DEVELOPER:  
**TRIDENT DEVELOPMENT**

These documents are not to be building permit unless specifically approved by the City of Baxter, Minnesota. It is the responsibility of the client to obtain all necessary permits and approvals. The client shall be responsible for obtaining all necessary permits and approvals. The client shall be responsible for obtaining all necessary permits and approvals.

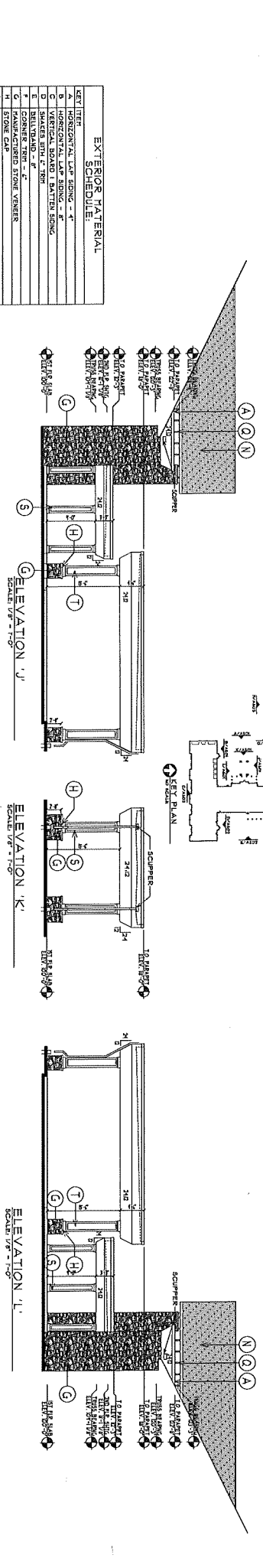
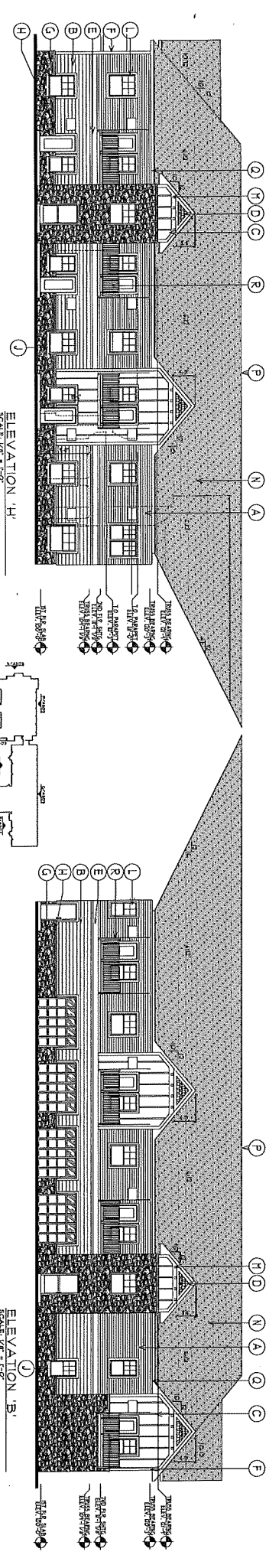
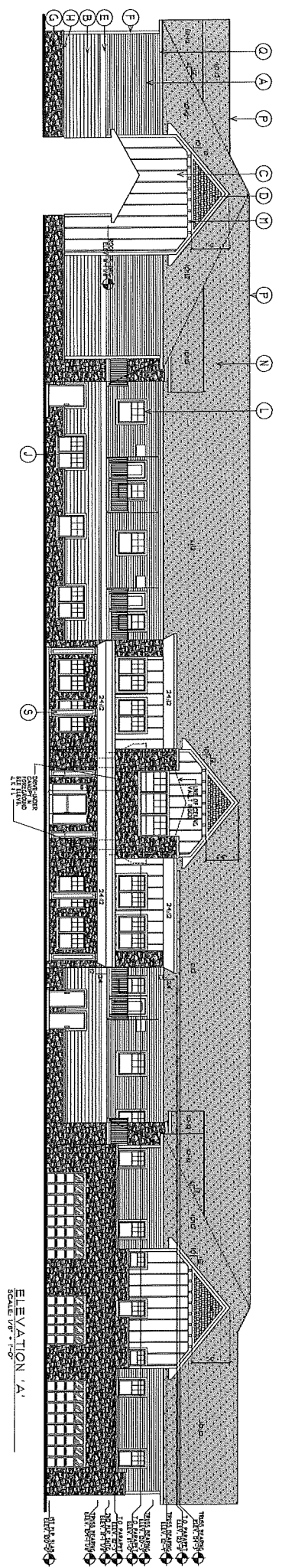


**COLE GROUP ARCHITECTS, LLC.**  
214 Park Avenue South  
Suite 100  
Baxter, MN 56309  
(320) 454-4470  
www.colegrouparchitects.com

COLE GROUP ARCHITECTS, LLC. expressly warrants that the drawings and other documents are true and correct. These drawings are not to be reproduced, changed or altered in any way or for any purpose without the written consent of Cole Group Architects, LLC. The client shall be responsible for obtaining all necessary permits and approvals. The client shall be responsible for obtaining all necessary permits and approvals. The client shall be responsible for obtaining all necessary permits and approvals.







**EXTERIOR MATERIAL SCHEDULE**

KEY ITEM	DESCRIPTION
A	HORIZONTAL LAM BLDG - 4"
B	HORIZONTAL LAM BLDG - 4"
C	HORIZONTAL LAM BLDG - 4"
D	SHAKER SHIP 4" TRIM
E	BELLYBOARD - 4"
F	CONCRETE TIE-OUT
G	STONE CAP
H	CHALKED FACE BRK
I	WIND LINDOS SHIP 4" TRIM
J	DECORATIVE DENTILS UNDER PROJECTION
K	ASPHALT SHINGLES - VENT
L	PRE-FABRICATED ALUMINUM SUBPENSION DECKS
M	PRE-FABRICATED ALUMINUM SUBPENSION DECKS
N	PRE-FABRICATED ALUMINUM SUBPENSION DECKS
O	WOOD GRANT SONG PANELS

**COLE GROUP ARCHITECTS, LLC**  
 714 N. Jackson Ave., Suite 100  
 Minneapolis, MN 55401  
 Phone: 612.338.1100  
 www.colegroup.com

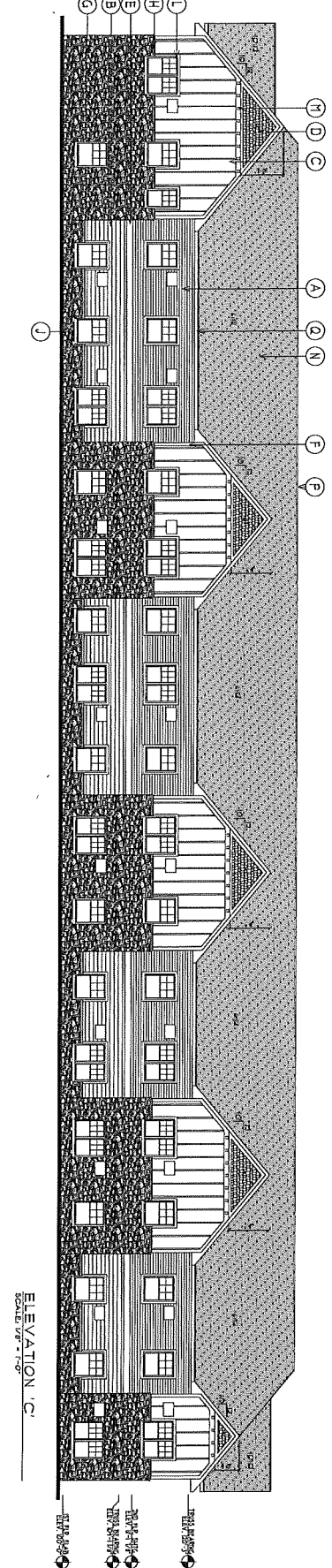
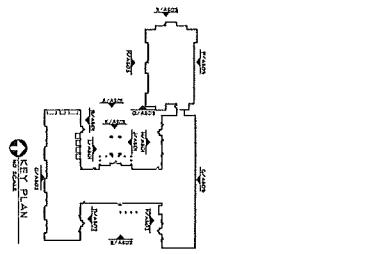
**DEVELOPER: TRIDENT DEVELOPMENT**

**PROPOSED: BAXTER AIF + DC**  
 BAXTER, MN

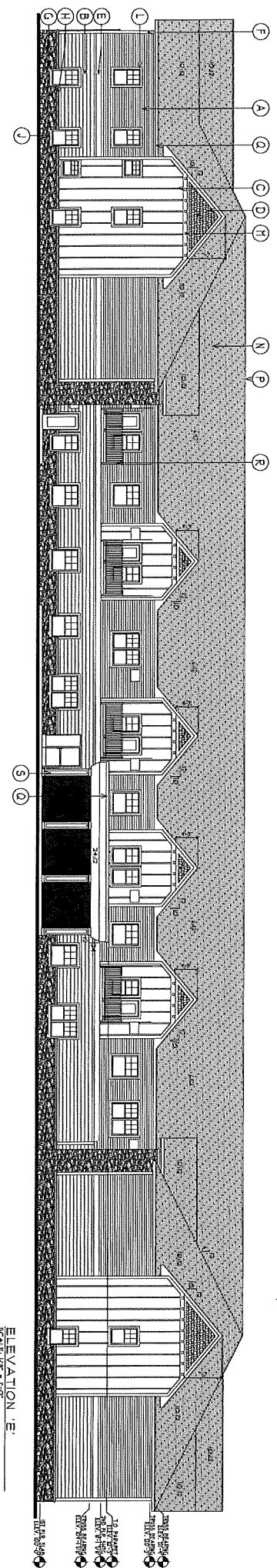
**REVISIONS**

NO.	DATE	DESCRIPTION

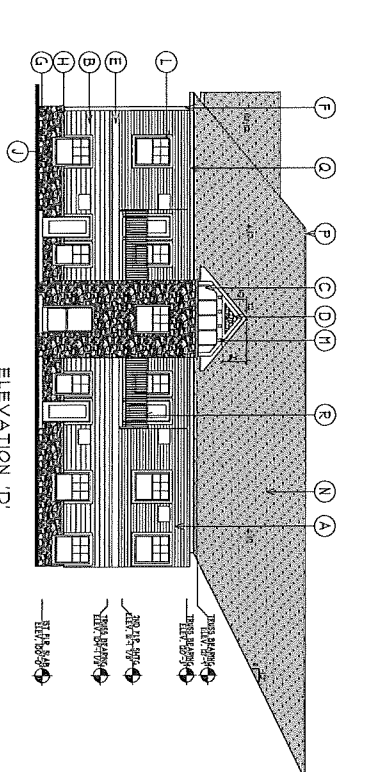
Project No. \_\_\_\_\_  
 Date \_\_\_\_\_  
 Drawn by \_\_\_\_\_  
 Checked by \_\_\_\_\_  
**A501**



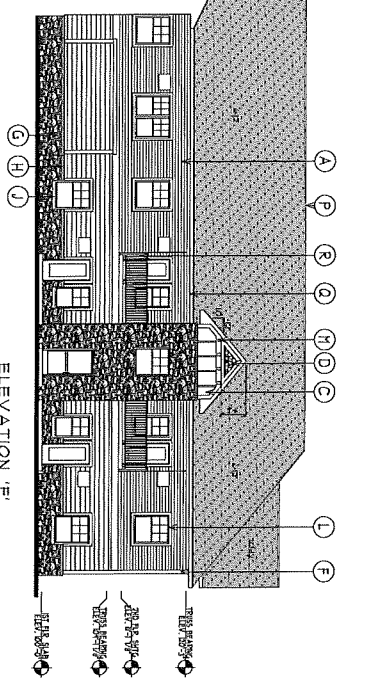
ELEVATION 'C'  
SCALE 1/8" = 1'-0"



ELEVATION 'E'  
SCALE 1/8" = 1'-0"



ELEVATION 'D'  
SCALE 1/8" = 1'-0"



ELEVATION 'F'  
SCALE 1/8" = 1'-0"

**EXTERIOR MATERIAL SCHEDULE:**

1	EXTERIOR
A	HORIZONTAL LAP SIDING - 4"
B	HORIZONTAL LAP SIDING - 6"
C	VERTICAL BOARD & BATTEN SIDING
D	SHINGLES
E	BILLBOARD - 4"
F	CORNER TIE - 4"
G	STONE CLAD STONE VENEER
H	STONE CLAD FACE SILL
J	GREEN WITH REBAR BETWEEN DECK POSTS
K	DECORATIVE SHIELD UNDER PROTECTION
N	ASPHALT SHINGLES
O	CONTINGIOUS ROOF VENT
P	PRE-FABRICATED ALUMINUM SUSPENSION DECKS
Q	SMOOTH FINISH COLUMN BR4P
T	WOOD GRAIN SIDING PANELS

**COLE GROUP ARCHITECTS, LLC**  
A R C H I T E C T S L L C  
2140 York Avenue, Suite 100  
St. Paul, MN 55116  
Phone: 612.291.1000  
www.colegrouparchitects.com

**TRIDENT DEVELOPMENT**

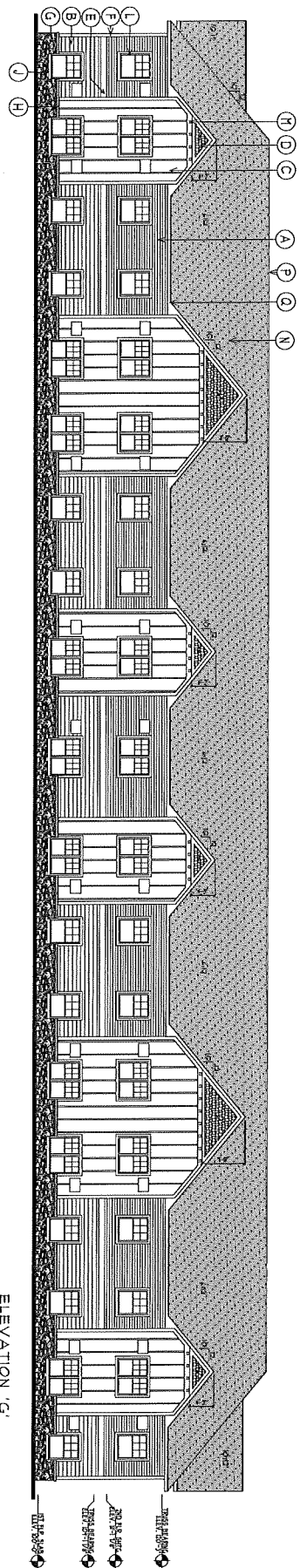
**PROPOSED: BAXTER ALF + DC**  
BAXTER, MN

REVISIONS:

NO.	DATE	DESCRIPTION

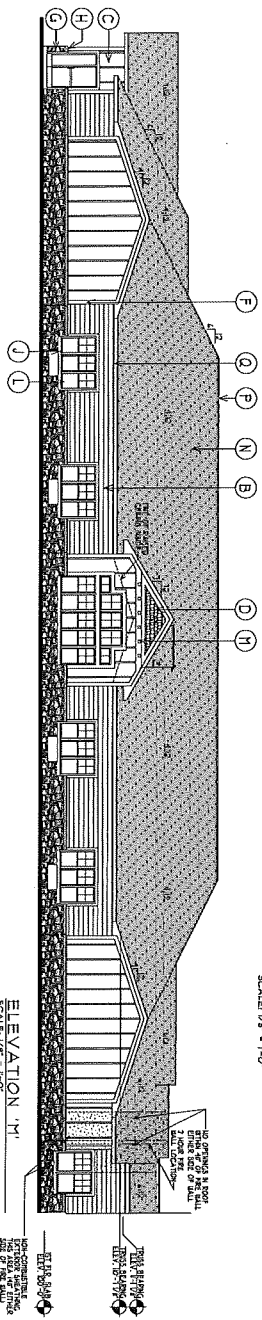
PROJECT NO. 2041  
DATE: 08/14/14  
DRAWN BY: [Signature]  
CHECKED BY: [Signature]

**A502**

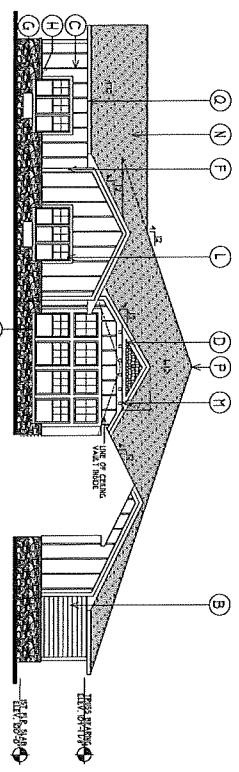


ELEVATION 'G'  
SCALE: 1/8" = 1'-0"

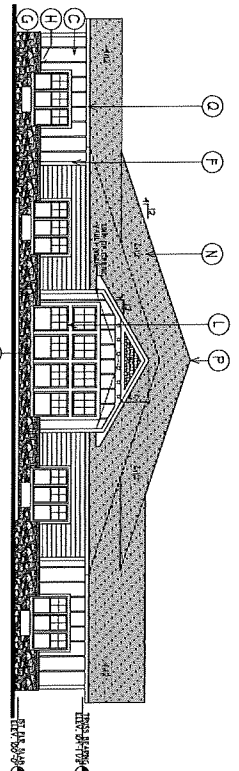
EXTERIOR MATERIAL SCHEDULE:	
LET ITEM	
A	HORIZONTAL LAP SIDING - F
B	HORIZONTAL LAP SIDING - F
C	HORIZONTAL LAP SIDING - F
D	SMAKES SHIP - C, TBM
E	RELVANAND - F
F	CORNER TRIM - C
G	CORNER TRIM - C
H	SHIMMERING STONE VENEER
I	SHIMMERING STONE VENEER
J	SHIMMERING STONE VENEER
K	SHIMMERING STONE VENEER
L	SHIMMERING STONE VENEER
M	SHIMMERING STONE VENEER
N	SHIMMERING STONE VENEER
O	SHIMMERING STONE VENEER
P	SHIMMERING STONE VENEER
Q	SHIMMERING STONE VENEER
R	SHIMMERING STONE VENEER
S	SHIMMERING STONE VENEER
T	SHIMMERING STONE VENEER
U	SHIMMERING STONE VENEER
V	SHIMMERING STONE VENEER
W	SHIMMERING STONE VENEER
X	SHIMMERING STONE VENEER
Y	SHIMMERING STONE VENEER
Z	SHIMMERING STONE VENEER



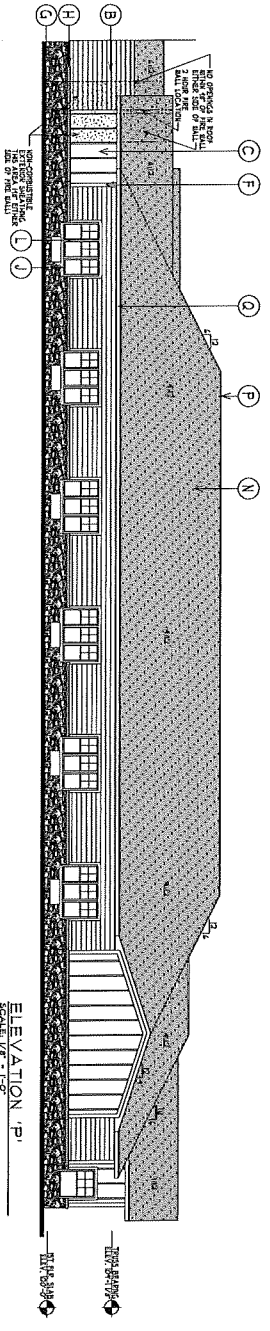
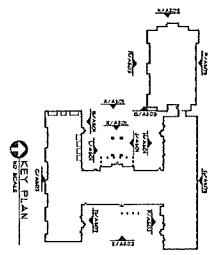
ELEVATION 'I'  
SCALE: 1/8" = 1'-0"



ELEVATION 'Q'  
SCALE: 1/8" = 1'-0"



ELEVATION 'N'  
SCALE: 1/8" = 1'-0"



ELEVATION 'P'  
SCALE: 1/8" = 1'-0"

**COLE GROUP ARCHITECTS, INC.**  
 216 Park Avenue South  
 21st Century Architecture  
 New York, NY 10003  
 Tel: 212 692 1234  
 Fax: 212 692 1235  
 www.colegrouparchitects.com

**DEVELOPER:**  
**TRIDENT DEVELOPMENT**

**PROPOSED:**  
**BAXTER ALF + DC**  
 BAXTER, MN

**ARCHITECT:**  
**COLE GROUP ARCHITECTS, INC.**

**DATE:** 10/15/10

**PROJECT NO.:** A503

**SCALE:** 1/8" = 1'-0"