

NOTES:

1. BASE PLAN USED IS A SURVEY PREPARED BY ARRO LAND SURVEYING OF BRAINERD, INC.
2. ALL EXISTING UTILITY LOCATIONS AND ELEVATIONS SHOWN ARE APPROXIMATE ONLY. CONTRACTOR SHALL CONFIRM ALL LOCATIONS AND ELEVATIONS PRIOR TO CONSTRUCTION. CONTRACTOR SHALL CONTACT UTILITY COMPANIES VIA GOPHER STATE ONE-CALL ONLINE OR BY CALLING 811 OR 1-800-252-1166.
3. ALL CONSTRUCTION SHALL CONFORM TO THE MOST RESTRICTIVE OF THE PROJECT SPECIFICATIONS, THE STANDARD SPECIFICATIONS OF THE CITY OF BAXTER AND THE LATEST EDITION OF MNDOT STANDARD SPECIFICATIONS FOR CONSTRUCTION.
4. PROJECT AREA = 175,539 SF (4.03 AC)
 PROPOSED IMPERVIOUS SURFACE AREA = 97,351 SF (55.5%)
5. PROPOSED SURFACE PARKING STALLS = 64 EACH
 (INCLUDES 3 ACCESSIBLE STALLS)

www.starkengineer.com
 320-249-2611
 Sauk Rapids, Minnesota

STARK ENGINEERING

I hereby certify that this plan, specification or design was prepared by me or under my direct supervision and that I am a duly Registered Engineer under the laws of the State of Minnesota.

REVISIONS	DATE	BY	DESCRIPTION
11/11/25	PER OWNER		
12/4/25	PER REVIEW		
1/9/26	CITY SUBMIT.		

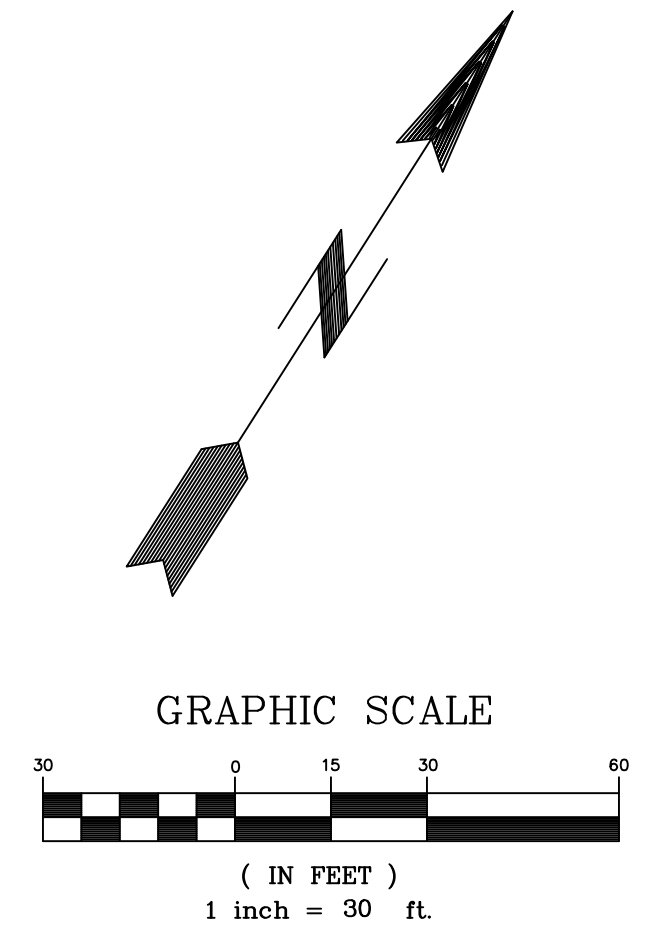
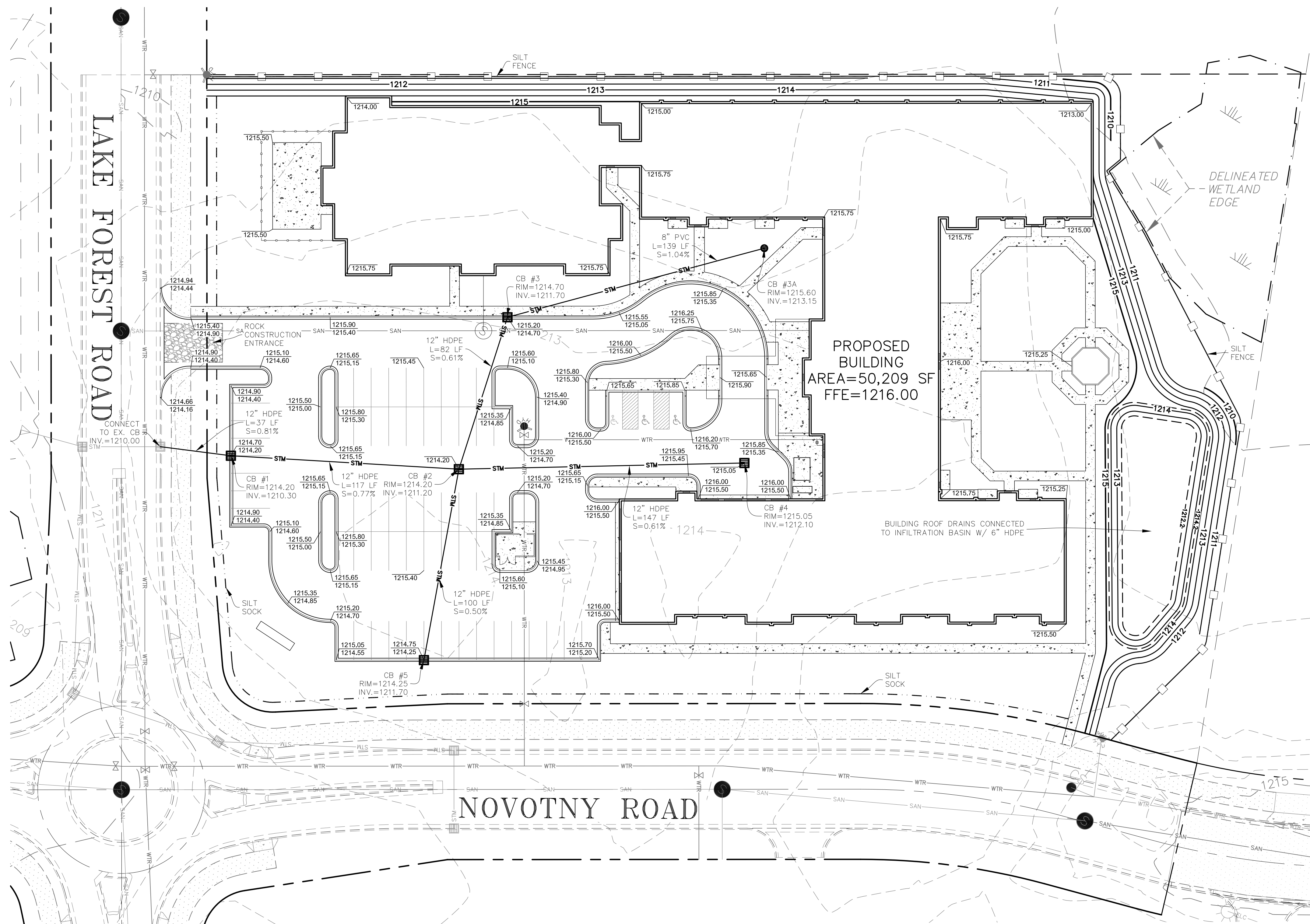
Wayne C.B. Stark
 Date: 7/9/26
 Registration No.: 26093

SITE & UTILITY PLAN

TIMBER RIDGE SENIOR LIVING
 BAXTER, MINNESOTA
 for:
 TRIDENT DEVELOPMENT

SHEET
C-1
 OF 2 SHEETS

**PRELIMINARY
 NOT FOR CONSTRUCTION**



NOTES:

1. BASE PLAN USED IS A SURVEY PREPARED BY ARRO LAND SURVEYING OF BRAINERD, INC.
2. ALL EXISTING UTILITY LOCATIONS AND ELEVATIONS SHOWN ARE APPROXIMATE ONLY. CONTRACTOR SHALL CONFIRM ALL LOCATIONS AND ELEVATIONS PRIOR TO CONSTRUCTION. CONTRACTOR SHALL CONTACT UTILITY COMPANIES VIA GOPHER STATE ONE-CALL ONLINE OR BY CALLING 811 OR 1-800-252-1166.
3. ALL CONSTRUCTION SHALL CONFORM TO THE MOST RESTRICTIVE OF THE PROJECT SPECIFICATIONS, THE STANDARD SPECIFICATIONS OF THE CITY OF BAXTER AND THE LATEST EDITION OF MNDOT STANDARD SPECIFICATIONS FOR CONSTRUCTION.
4. THE FOLLOWING SEQUENCE AND PROTOCOLS SHALL BE FOLLOWED FOR EROSION AND SEDIMENT CONTROL DURING THE SITE DEVELOPMENT PROCESS:
 - A. INSTALL PERIMETER CONTROLS (SILT FENCE AND ROCK CONSTRUCTION ENTRANCE) AS SHOWN ON THE PLANS PRIOR TO START OF WORK.
 - B. NO CONCRETE WASHOUTS ARE ALLOWED ON THE PROJECT SITE. SOIL STOCKPILES SHALL HAVE PERIMETER CONTROL AND HAVE TEMPORARY SEED AND MULCH.
 - C. MAINTAIN ALL TEMPORARY EROSION CONTROL DEVICES IN PLACE UNTIL THE CONTRIBUTING DRAINAGE AREA HAS BEEN STABILIZED. INSPECT TEMPORARY EROSION CONTROL DEVICES ON A WEEKLY BASIS AND AFTER EACH 1/2" OR MORE RAIN EVENT. CLEAN OR MAINTAIN THESE DEVICES AS NEEDED TO BE EFFECTIVE. REPLACE DETERIORATED, DAMAGED OR ROTTED EROSION CONTROL DEVICES IMMEDIATELY.
 - D. REMOVE ALL SOILS AND SEDIMENTS DEPOSITED ONTO PUBLIC AND/OR PRIVATE PAVEMENT AREAS WITHIN 24 HOURS OF DEPOSITION. REMOVAL OF TRACKING MATERIALS SHALL BE COMPLETED AT THE END OF EACH WORK DAY WHEN IT OCCURS. SWEEPING MAY BE ORDERED AT ANY TIME IF CONDITIONS WARRANT.
 - E. PERFORM SITE GRADING, EXCAVATION AND EMBANKMENT. SEED AND MULCH ALL DISTURBED AREAS OUTSIDE OF PROPOSED BUILDING AND PAVEMENT AREAS WITHIN 72 HOURS OF THIS WORK.
 - F. INSTALL UTILITIES, CONSTRUCT BUILDING, INSTALL CONCRETE FLATWORK AND PAVEMENT SECTION. FINE GRADE SITE AND RESTORE GREEN AREAS WITH PERMANENT VEGETATION OF SEED, MULCH AND FERTILIZER.
 - G. REMOVE ALL TEMPORARY EROSION AND SEDIMENT CONTROL DEVICES AFTER SITE HAS UNDERGONE FINAL STABILIZATION AND PERMANENT VEGETATION HAS BEEN ESTABLISHED WITH AT LEAST 70% COVERAGE.

**PRELIMINARY
NOT FOR CONSTRUCTION**

www.starkengineering.com
320-249-2611
Sauk Rapids, Minnesota

**STARK
ENGINEERING**

I hereby certify that this plan, specification or report was prepared by me or under my direct supervision and that I am a duly Registered Engineer under the laws of the State of Minnesota.
Wayne C.B. Stark
Date: 1/9/26
Registration No.: 26093

REVISIONS	DATE	CITY SUBMIT
	1/9/26	

**GRADING & EROSION
CONTROL PLAN**

TIMBER RIDGE SENIOR LIVING
BAXTER, MINNESOTA
for:
TRIDENT DEVELOPMENT

SHEET
C-2
OF 2 SHEETS