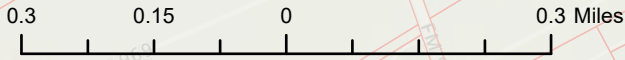


FM 969 - ROW

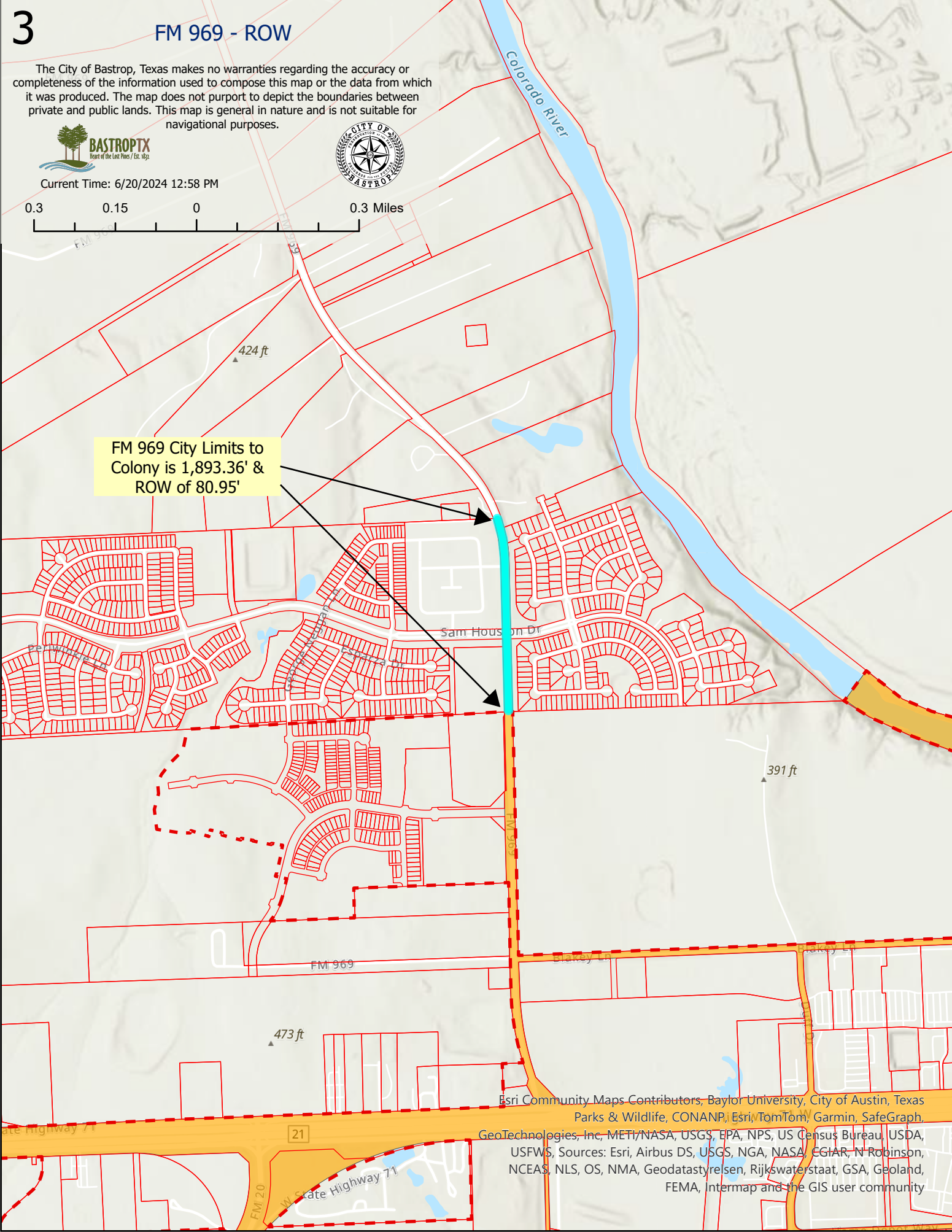
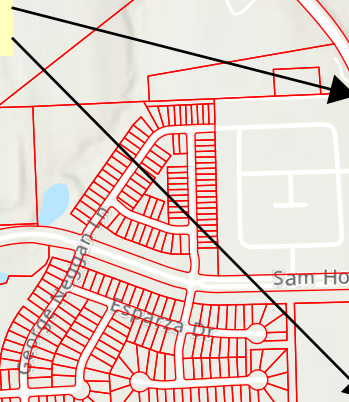
The City of Bastrop, Texas makes no warranties regarding the accuracy or completeness of the information used to compose this map or the data from which it was produced. The map does not purport to depict the boundaries between private and public lands. This map is general in nature and is not suitable for navigational purposes.



Current Time: 6/20/2024 12:58 PM



FM 969 City Limits to Colony is 1,893.36' & ROW of 80.95'



Esri Community Maps Contributors, Baylor University, City of Austin, Texas Parks & Wildlife, CONANP, Esri, TomTom, Garmin, SafeGraph, GeoTechnologies, Inc, METI/NASA, USGS, EPA, NPS, US Census Bureau, USDA, USFWS, Sources: Esri, Airbus DS, USGS, NGA, NASA, EGIAR, N Robinson, NCEAS, NLS, OS, NMA, Geodastystreisen, Rijkswaterstaat, GSA, Geoland, FEMA, Intermap and the GIS user community