



Community Action, Inc.
of Central Texas

— DEVELOPING OPPORTUNITIES —

SERVING OUR BASTROP COMMUNITY



ABOUT US

Community Action's Mission is
"Helping Central Texans (in Bastrop)
improve economic self-reliance
through a wide range of services and
community partnerships."



"WE ARE MORE THAN JUST A BUILDING"

WE ADDRESS COMMUNITY NEEDS

JOB CERTIFICATIONS

- Phlebotomy
- CNA
- Bookkeeping
- EMT
- Security Guard
- MS Office

HIGH SCHOOL COMPLETION

- High School Equivalency/GED
- Spanish GED
- Pre-GED
- Tutoring
- Online

ENGLISH SKILLS

- English/ESL
- Citizenship
- ESL for Professionals

DIGITAL LITERACY

- Basic computer software skills
- Spreadsheets
- Email
- Text messaging
- Internet
- Video conferencing

"WE HAVE A NUMBER OF PARTNERS WHOM WE SUPPORT AND WHO SUPPORT US."

WE PARTNER WITH

- **BASTROP COUNTY CARES**
- **BASTROP ISD**
- **COMBINED COMMUNITY ACTION**
- **ELGIN ACC**
- **ELGIN ELEMENTARY SCHOOL**
- **ELGIN PUBLIC LIBRARY**
- **MCDADE ISD**
- **ST. PETER LUTHERAN CHURCH**
- **SMITHVILLE PUBLIC LIBRARY**
- **SMITHVILLE WORKFORCE TRAINING CENTER**
- **TEXAS DEPARTMENT OF ASSISTIVE & REHABILITATIVE SERVICES**
- **WORKFORCE SOLUTIONS**

"IMPROVING ECONOMIC SELF-RELIANCE"

HOW WE MEET NEEDS

WE PROVIDE

- ❑ FREE CLASSES
- ❑ NO ELIGIBILITY REQUIREMENTS
- ❑ DAY, EVENING & SATURDAY CLASSES
- ❑ CAREER COUNSELING
- ❑ CHILD CARE FOR SOME SITES
- ❑ OCCUPATIONAL CERTIFICATION
- ❑ ESL & HSE/GED ORIENTATION
- ❑ FREE GED/HSE PRACTICE TESTS
- ❑ PROGRESS TESTING
- ❑ REFERRALS FOR SERVICES
 - Employment
 - Vocational Rehabilitation
 - Colleges
 - Bastrop Employers

CLASSES ARE LOCATED

- Bastrop Learning Center
- Brown Elementary
- Genesis High School
- Lost Pines Elementary
- Cedar Creek Elementary
- Cedar Creek High School
- McDade High School
- Online via Distance Learning
- Pyrology
- Smithville Workforce Trng Ctr
- Smithville Public Library
- Elgin ACC Campus
- Elgin Elementary School
- St. Peter Lutheran Church
- Texas Safety Public Trng Acad.

The background is a complex geometric composition. It features a grid of squares and triangles in shades of blue, pink, and purple. Overlaid on these are various patterns: concentric circles, parallel lines, and a grid of small dots. A white line with a circular end extends from the left side of the image towards the text.

**EDC - THERE
WILL BE A
RETURN ON
YOUR
INVESTMENT!**

OUR SUCCESS MODEL



FOCUS

Identify and market to populations needing our services. Looking at trends in education and social media. Focus on current and future technology.



OUTREACH

Work with our partners to provide educational opportunities to support workforce and community needs.



ACTION

Ongoing monitoring to ensure we are meeting the needs of those we serve. Seeking out funding to support programs in Bastrop.

HOW WE COMPARE

COMMUNITY COLLEGE

\$85 PER CREDIT HOUR

- Amount in-district students pay

\$286 PER CREDIT HOUR

- Bastrop students are considered out-of-district and pay \$286 per credit

16 WEEKS PER SEMESTER

- One semester contact hour equals 15 contact hours per semester

COMMUNITY ACTION

FREE CLASSES

- Most CAI classes are offered 2 days per week for two hours each day
- In 16 weeks, a typical CAI student will have attended a class and received 64 hours of direct instruction
- Students may also receive online instruction and tutoring outside of regular class hours
- Students are progress tested after receiving 30-45 hours of instruction



FINANCIAL SUPPORT STRATEGY

SEEK FUNDING SUPPORT FOR BASTROP CAI PROGRAMS

SEEK AND APPLY FOR OPEN GRANTS

SURVEY COMMUNITY BUSINESSES TO DETERMINE A BASE OF PROGRAM SUPPORT

CONTACT BUSINESSES FROM SURVEY AND SCHEDULE FACE-TO-FACE MEETINGS

CONTACT LOCAL BUSINESSES TO SUPPORT GRADUATION CELEBRATION

TEACHER SALARY COMPARISON

Teachers @	Class Hours	Prep	Weeks	Starting Pay	Base	7 AY holidays	Birthday	Personal Day	Total	Difference	Per Hour
ACC	4	1	42	\$30.00	\$6,300.00	\$ -	\$ -	\$ -	\$6,300.00		\$30
CAI	4	2	42	\$21.61	\$5,444.65	\$ 605.08	\$ 86.44	\$ 86.44	\$6,222.61	(\$77.39)	\$29.63

MEET THE BASTROP TEAM



Jacquie Banks

Bastrop Area
Coordinator



Debbie Schools

Performance Quality
Support Specialist



Margarita Igoe

Site Support Specialist



Dale Burke

Career Counselor



Montie May

IET Coordinator



Leticia Lemus

Site support Specialist



Emma Forks

Del Valle Site
Coordinator

CAI STORIES



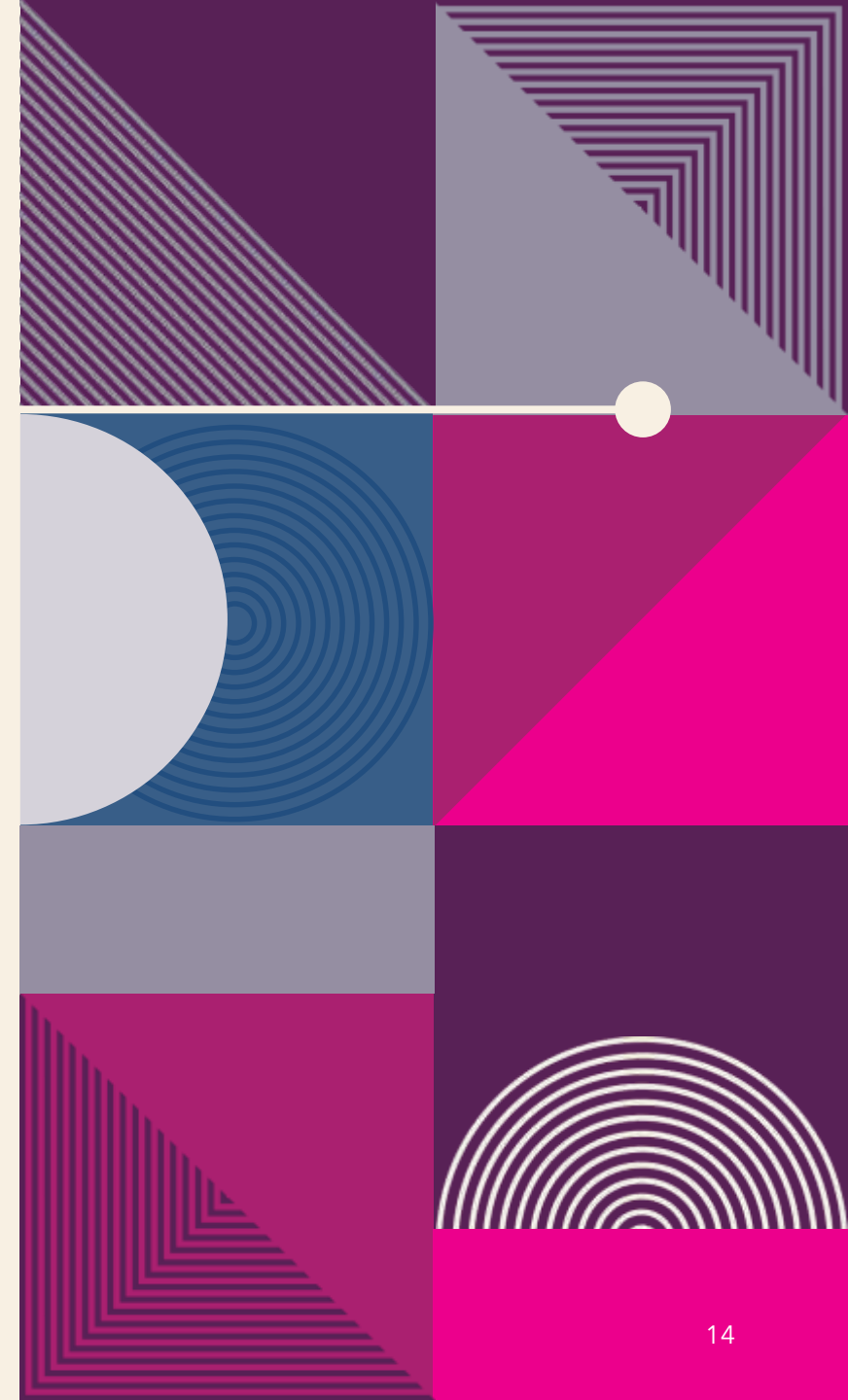
Leticia Miranda, CAI employee and former student



CAI STORIES

Patricia Lewis, Teacher, former student & CAI graduation speaker

THANK YOU!
YOUR SUPPORT WILL MAKE A
LASTING IMPACT ON OUR
COMMUNITY AND THOSE
WE SERVE, BY
CREATING POSITIVE
FINANCIAL, SOCIAL, AND
LIFE CHANGES.





THANK YOU

Jacquie Banks, M.Ed.

512-985-5169

jbanks@communityaction.com

www.communityaction.com



Location of Sites	Type of Classes	Participant Count	Direct Instruction Hours
BASTROP ISD SITES			
Cedar Creek Elementary	ESL	41	1440
Cedar Creek High School	ESL & Spanish HSE	15	289
Cedar Creek High School	English HSE	10	271
Genesis High School	ESL & Spanish HSE	185	5240
Genesis High School	English HSE	41	941
Lost Pines Elementary	ESL	18	545
		254	8726
BASTROP COUNTY SITES			
Elgin Library	ESL	31	854
*Iglesia Hogar Church	ESL	17	331
McDade ISD	ESL & Spanish HSE	4	188
Smithville Education Ctr.	ESL	32	1061
Smithville Education Ctr.	English HSE	26	517
St. Peter's Lutheran Church	ESL	12	192
		74	3143
Other County Training Sites			
La Grange - Norma Webb	ESL	10	477
La Grange - Norma Webb	English HSE	10	469
Giddings - Combined Comm. Action	English HSE	18	420
		38	1366
Bastrop County Career Training			
Bastrop Learning Center	IET Career Training	59	497
Pyrology-Echobase	IET Career Training	42	207
Smithville Elementary	IET Career Training	18	67
Smithville Workforce	IET Career Training	14	20
		133	791
		603	14026

Bastrop 2019-2023 Student Gains

Bastrop Area Data	GED/ESL Students	ESL/GED MSG's Earned*	HSE's Obtained	IET Participants	IET Skills Progressions**	IET Credentials Obtained***
2019-20	334	121	8	22	16	7
2020-21	373	118	7	83	29	36
2021-22	404	110	8	95	65	30
2022-23	366	86	15	77	56	53
*Made at least 1 level gain						
**Learned skill/passed a test						
***Passed license or certification test						
IET - career training						