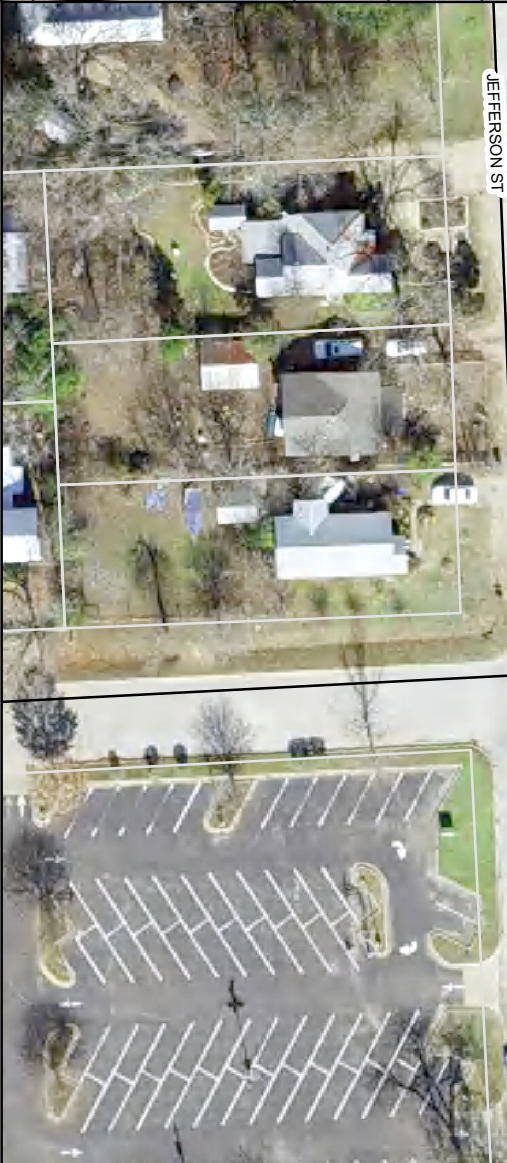
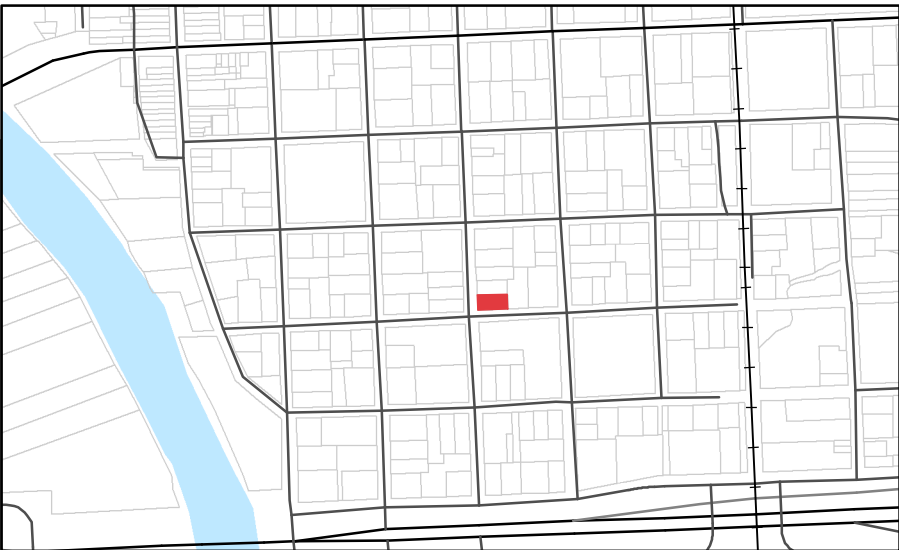


Attachment 1 Location Map



JEFFERSON ST

AUSTIN ST

Date: 10/14/2022

701 Jefferson Street Certificate of Appropriateness Building Materials

1 inch = 70 feet



The accuracy and precision of this cartographic data is limited and should be used for information /planning purposes only. This data does not replace surveys conducted by registered Texas land surveyors nor does it constitute an "official" verification of zoning, land use classification, or other classification set forth in local, state, or federal regulatory processes. The City of Bastrop, nor any of its employees, do not make any warranty of merchantability and fitness for particular purpose, or assumes any legal liability or responsibility for the accuracy, completeness or usefulness of any such information, nor does it represent that its use would not infringe upon privately owned rights.