

SHEET LIST				
Sheet Number	Sheet Name	Sheet Issue Date	Current Revision Date	Notes
A0	COVER	06/19/14		
A0-b	NOTES	06/19/14		
A0.1	SITE PLAN	06/19/14		
A1.0	ROOF PLAN	06/19/14		
A1.1	FIRST FLOOR PLAN	06/19/14		
A1.2	SECOND FLOOR PLAN	08/17/22		
A2.1	ELEVATIONS	06/19/14		
A2.2	ELEVATIONS	08/17/22		
A3.1	BUILDING SECTIONS	06/19/14		
A3.2	BUILDING SECTIONS	08/17/22		
A5.1	WALL SECTIONS	06/19/14		
A8.1	SCHEDULES	06/19/14		

STRUCTURAL COORDINATION SHEET LIST				
Sheet Number	Sheet Name	Sheet Issue Date	Current Revision Date	Notes
SC0.1	FOUNDATION LOCATION PLAN	03/22/15		
SC1.1	FOUNDATION PLAN	09/17/14		
SC1.2	LOW ROOF & FLOOR FRAMING PLAN	03/22/15		
SC1.3	HIGH ROOF FRAMING PLAN	03/22/15		

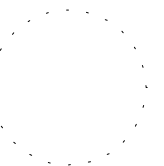
STRUCTURALS SHEET LIST				
Sheet Number	Sheet Name	Sheet Issue Date	Current Revision Date	Notes
S1.0	ENGINEER	07/25/14		



09-15-2022

BASTROP RESIDENCE

09-15-2022



SCALE:

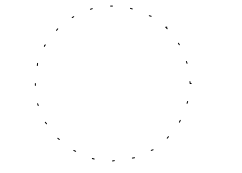
CONTACTS		
BUILDER	ENGINEER	SURVEYOR
BRIAN DEWITT bdewitt@atomprints.com (812) 204-1153	- - - -	JAMES E. GARON & ASSOC. jgaron@austin.rr.com (512) 303-4185

COVER

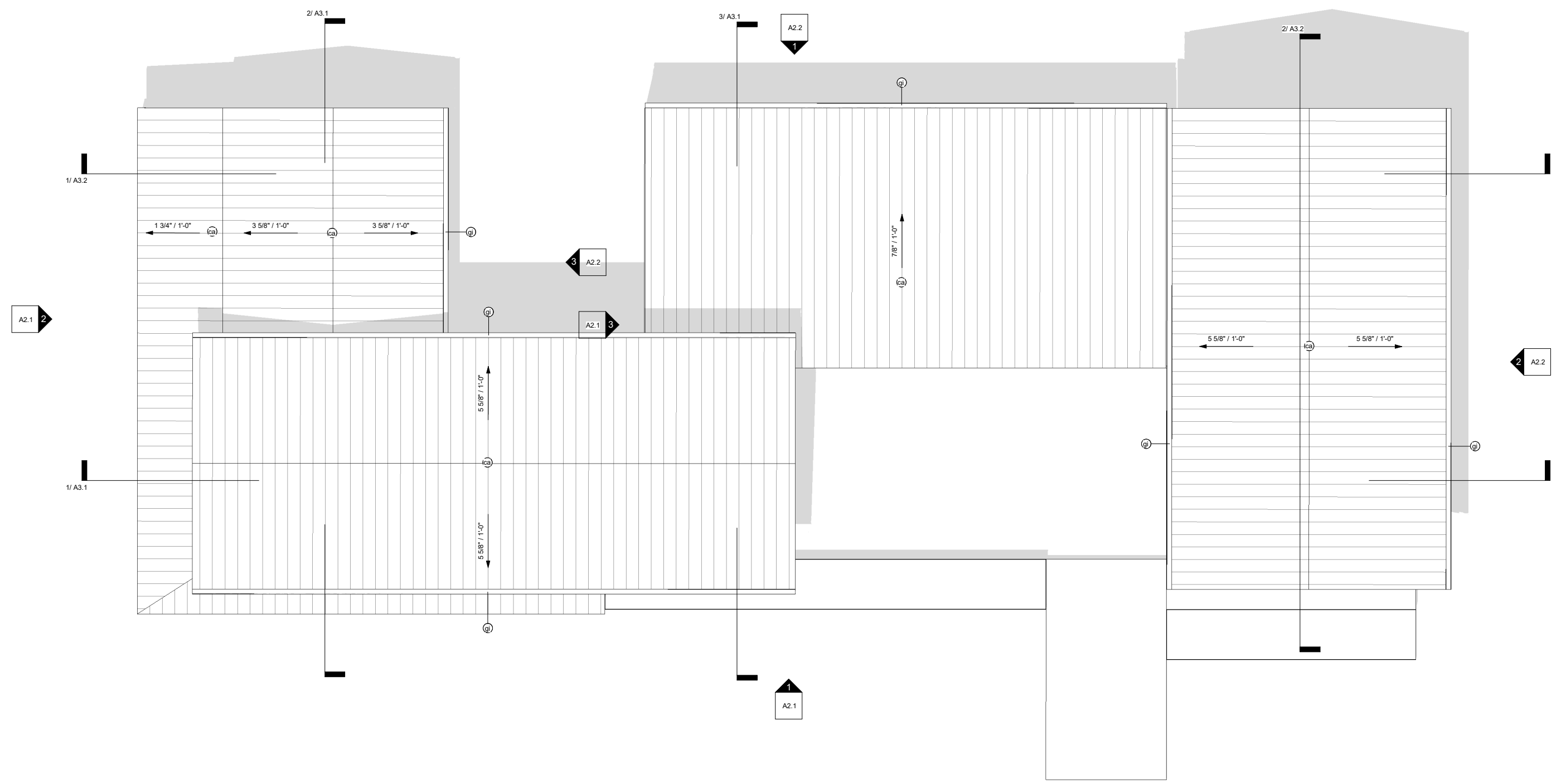


**BASTROP RESIDENCE**

09-15-2022



SCALE: 3/16" = 1'-0"



MATERIAL LIST			
MARK	MATERIAL NAME	MATERIAL DESCRIPTION	COMMENTS
ca	Galvalume Standing Seam Metal Roof	Aluminum standing seam roofing	Per "Roofing Notes" A5
cz	Roof Sheathing		Per "Roofing Notes" A5
da	Shiplap Metal Siding (driftwood)	Vesta Shiplap Metal Siding (woodgrain)	HD3 Woodgrain 482 "Gilded Grain", variegate 5
dd	Shiplap Metal Siding (cedar)	Vesta Shiplap Metal Siding (woodgrain)	HD3 Woodgrain 481 "Driftwood", variegate 5
ea	1/2" Gypsum Wall Board		Per "Drywall and Paint Notes" A5
eb	5/8" Gypsum Wall Board		Per "Drywall and Paint Notes" A5
gb	Tongue & Groove Ceiling	1x4 douglas fir	Painted (stained)
ji	Millwork	Full overlay, flat panel, walnut, rift-sawn	
lo	Plywood, Sheathing	Plywood, sheathing grade	
pa	Steel Angle	Steel, Powdercoated, Color TBD	
sp	1/4" Steel plate planter	Steel, mill finish	
wp	4x4 Wood Post	Cedar, smooth	Stained
ya	Wood Flooring	Engineered, 3/4" thick	
yb	Tile Flooring		
yc	Wood Decking	3/4 x 4 cedar or cypress, stained w/ penofin	

**ROOF PLAN NOTES**

- PLUMBING FIXTURES SHOWN DASHED TO ASSIST IN COUNT AND LOCATION OF ROOF VENTS/PENETRATIONS;
- REFERENCE PLANS FOR MORE ACCURATE LOCATION OF PLUMBING AND APPLICANCES

**FLASHING NOTES**

- ALL EXTERIOR PLUMBING/MECHANICAL PENETRATIONS SHALL USE QUICK-FLASH FLASHING PANELS INSTALLED PER MANUFACTURER RECOMMENDATIONS

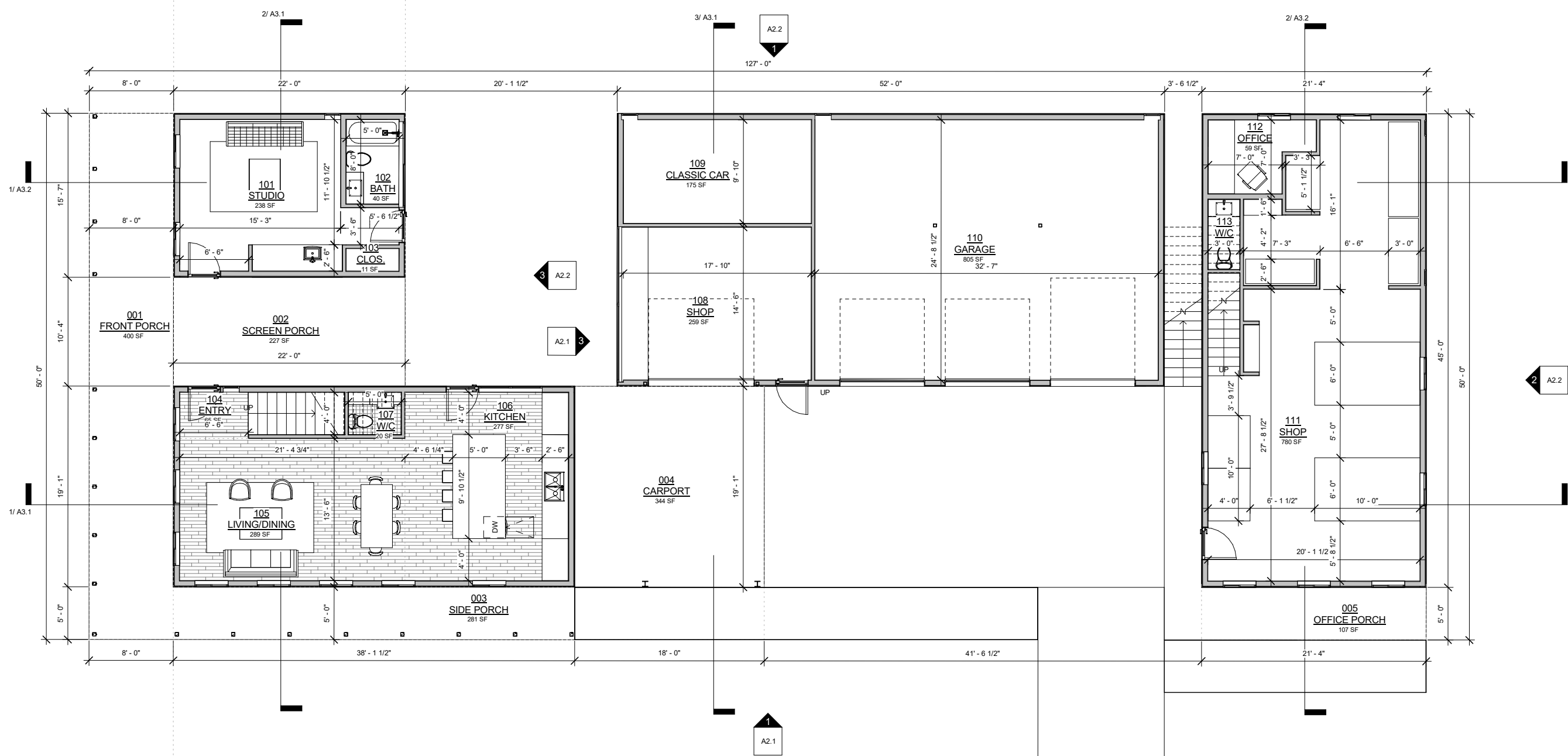
**BASTROP RESIDENCE**

09-15-2022

SCALE: As indicated

FIRST FLOOR PLAN

**A.I.**



**DOOR SCHEDULE**  
 \*THIS SCHEDULE IS FOR QUICK REFERENCE ONLY - REFER TO A8.1 FOR MORE EXTENSIVE NOTES AND REQUIREMENTS  
 \*ALL GLAZING IN DOORS TO BE TEMPERED

MARK	DESCRIPTION	HARDWARE TYPE	OPERATION	WIDTH	HEIGHT	JAMB DEPTH	JAMB WIDTH	MANUFACTURER	MODEL	NOTES	Rough Height	Rough Width
52	AL	DB	SWING SAMPLE	3'-0"	8'-0"	0'-7 1/4"	0'-0 3/4"	Vitawall				0'-0 3/4"
53	AL	DB	SWING SAMPLE	3'-0"	8'-0"	0'-7 1/4"	0'-0 3/4"	Vitawall				0'-0 3/4"
54	AL	DB	SWING SAMPLE	3'-0"	8'-0"	0'-7 1/4"	0'-0 3/4"	Vitawall				0'-0 3/4"
55	AL	DB	SWING SAMPLE	3'-0"	8'-0"	0'-7 1/4"	0'-0 3/4"	Vitawall				0'-0 3/4"
56	AL	DB	SWING SAMPLE	3'-0"	8'-0"	0'-7 1/4"	0'-0 3/4"	Vitawall				0'-0 3/4"
57	GAR		OVERHEAD	8'-0"	8'-0"	0'-7 1/4"	0'-0 3/4"	4 Panel, Flat Metal		PAINTED (COLOR T.B.D.)		
58	GAR		OVERHEAD	8'-0"	8'-0"	0'-7 1/4"	0'-0 3/4"	4 Panel, Flat Metal		PAINTED (COLOR T.B.D.)		
59	GAR		OVERHEAD	8'-0"	10'-0"	0'-7 1/4"	0'-0 3/4"	4 Panel, Flat Metal		PAINTED (COLOR T.B.D.)		
60	AL	DB	SWING SAMPLE	3'-0"	8'-0"	0'-7 1/4"	0'-0 3/4"	Vitawall				0'-0 3/4"
61	SL	LA	OX	6'-0"	6'-6"	0'-7 1/4"	0'-0 3/4"	© 2013 Mil Windows and Doors	420		0'-8 1/2"	0'-0 1/2"
62	AL	DB	SWING SAMPLE	2'-8"	8'-0"	0'-7 1/4"	0'-0 3/4"	Vitawall				0'-0 3/4"
63	AL	DB	SWING SAMPLE	3'-0"	8'-0"	0'-7 1/4"	0'-0 3/4"	Vitawall				0'-0 3/4"
64	GAR		OVERHEAD	10'-0"	8'-0"	0'-7 1/4"	0'-0 3/4"	4 Panel, Flat Metal		PAINTED (COLOR T.B.D.)		

**WINDOW SCHEDULE**  
 \*THIS SCHEDULE IS FOR QUICK REFERENCE ONLY - REFER TO A8.1 FOR MORE EXTENSIVE NOTES AND REQUIREMENTS

MARK	DESCRIPTION	UNIT WIDTH	UNIT HEIGHT	FRAMING				TEMPERED	EGRESS	MANUFACTURER	NOTES
				ROHEIGHT	RO SILL	RO HEAD	HEAD HEIGHT				
65	HSW	3'-0 1/2"	6'-1 1/2"	2'-0"	2'-0"	2'-0"	8'-1 1/2"		Milgard		
66	HSW	3'-0 1/2"	6'-1 1/2"	2'-0"	2'-0"	2'-0"	8'-1 1/2"		Milgard		
67	HSW	3'-0 1/2"	6'-1 1/2"	2'-0"	2'-0"	2'-0"	8'-1 1/2"		Milgard		
68	HSW	3'-0 1/2"	6'-1 1/2"	2'-0"	2'-0"	2'-0"	8'-1 1/2"		Milgard		
69	HSW	3'-0 1/2"	6'-1 1/2"	2'-0"	2'-0"	2'-0"	8'-1 1/2"		Milgard		
70	HSW	3'-0 1/2"	6'-1 1/2"	2'-0"	2'-0"	2'-0"	8'-1 1/2"		Milgard		
71	HSW	3'-0 1/2"	6'-1 1/2"	2'-0"	2'-0"	2'-0"	8'-1 1/2"		Milgard		
72	HSW	3'-0 1/2"	6'-1 1/2"	2'-0"	2'-0"	2'-0"	8'-1 1/2"		Milgard		
73	HSW	3'-0 1/2"	6'-1 1/2"	2'-0"	2'-0"	2'-0"	8'-1 1/2"		Milgard		
74	HSW	3'-0 1/2"	6'-1 1/2"	2'-0"	2'-0"	2'-0"	8'-1 1/2"		Milgard		
75	HSW	3'-0"	5'-1 1/2"	3'-0"	3'-0"	3'-0"	8'-1 1/2"		Milgard		
76	HSW	3'-0"	5'-1 1/2"	3'-0"	3'-0"	3'-0"	8'-1 1/2"		Milgard		
77	HSW	3'-0"	5'-1 1/2"	3'-0"	3'-0"	3'-0"	8'-1 1/2"		Milgard		
78	HSW	3'-0"	5'-1 1/2"	3'-0"	3'-0"	3'-0"	8'-1 1/2"		Milgard		
79	HSW	3'-0"	5'-1 1/2"	3'-0"	3'-0"	3'-0"	8'-1 1/2"		Milgard		
80	HSW	3'-0"	5'-1 1/2"	3'-0"	3'-0"	3'-0"	8'-1 1/2"		Milgard		
81	HSW	3'-0"	5'-1 1/2"	3'-0"	3'-0"	3'-0"	8'-1 1/2"		Milgard		
82	HSW	3'-0"	5'-1 1/2"	3'-0"	3'-0"	3'-0"	8'-1 1/2"		Milgard		
83	HSW	3'-0"	5'-1 1/2"	3'-0"	3'-0"	3'-0"	8'-1 1/2"		Milgard		
84	PSA	1'-6"	1'-6"	1'-6"	8'-0 1/2"	0'-0"	11'-4 1/2"	4'-0"	MILGARD		
85	HSW	8'-0"	1'-7 1/2"	6'-6"	6'-6"	6'-6"	8'-1 1/2"		Milgard		
86	HSW	9'-10 1/2"	1'-7 1/2"	3'-0"	3'-0"	3'-0"	4'-7 1/2"		Milgard		
87	HSW	7'-0"	1'-7 1/2"	3'-0"	3'-0"	3'-0"	4'-7 1/2"		Milgard		
88	PSA	7'-4"	4'-0"	2'-0"	4'-1 1/4"	3'-0"	7'-1 1/4"	2'-0"	MILGARD		
89	PSA	7'-4"	4'-0"	2'-0"	4'-1 1/4"	3'-0"	7'-1 1/4"	2'-0"	MILGARD		
90	PSA	8'-1 1/2"	2'-0"	8'-2"	2'-1"	8'-10 1/4"	8'-11"	8'-10 1/4"	MILGARD		
91	PSA	8'-1 1/2"	2'-0"	8'-2"	2'-1"	8'-10 1/4"	8'-11"	8'-10 1/4"	MILGARD		
92	PSA	3'-1 1/2"	2'-0"	2'-0"	2'-1"	8'-10 1/4"	8'-11"	8'-10 1/4"	MILGARD		
93	PSA	1'-6"	8'-0"	1'-8 1/2"	8'-0 1/2"	0'-0 3/8"	11'-4 1/2"	8'-0 3/8"	MILGARD		
94	PSA	3'-0"	8'-0"	3'-0 1/2"	8'-0 1/2"	0'-0"	11'-1 1/2"	8'-0"	MILGARD		
95	PSA	3'-0"	8'-0"	3'-0 1/2"	8'-1 1/2"	0'-0"	11'-1 1/2"	8'-0"	MILGARD		
96	PSA	3'-0"	8'-0"	3'-0 1/2"	8'-1 1/2"	0'-0"	11'-1 1/2"	8'-0"	MILGARD		
97	PSA	3'-0"	8'-0"	3'-0 1/2"	8'-1 1/2"	0'-0"	11'-1 1/2"	8'-0"	MILGARD		
98	PSA	1'-6"	8'-0"	1'-8 1/2"	8'-0 1/2"	0'-0"	11'-1 1/2"	8'-0"	MILGARD		
99	PSA	1'-6"	8'-0"	1'-8 1/2"	8'-0 1/2"	0'-0"	11'-1 1/2"	8'-0"	MILGARD		
100	PSA	1'-6"	8'-0"	1'-8 1/2"	8'-0 1/2"	0'-0"	11'-1 1/2"	8'-0"	MILGARD		
101	PSA	1'-6"	8'-0"	1'-8 1/2"	8'-0 1/2"	0'-0"	11'-1 1/2"	8'-0"	MILGARD		
102	PSA	1'-6"	8'-0"	1'-8 1/2"	8'-0 1/2"	0'-0"	11'-1 1/2"	8'-0"	MILGARD		
103	PSA	1'-6"	8'-0"	1'-8 1/2"	8'-0 1/2"	0'-0"	11'-1 1/2"	8'-0"	MILGARD		
104	PSA	1'-6"	8'-0"	1'-8 1/2"	8'-0 1/2"	0'-0"	11'-1 1/2"	8'-0"	MILGARD		
105	PSA	1'-6"	8'-0"	1'-8 1/2"	8'-0 1/2"	0'-0"	11'-1 1/2"	8'-0"	MILGARD		
106	PSA	1'-6"	8'-0"	1'-8 1/2"	8'-0 1/2"	0'-0"	11'-1 1/2"	8'-0"	MILGARD		
107	PSA	1'-6"	8'-0"	1'-8 1/2"	8'-0 1/2"	0'-0"	11'-1 1/2"	8'-0"	MILGARD		
108	PSA	1'-6"	8'-0"	1'-8 1/2"	8'-0 1/2"	0'-0"	11'-1 1/2"	8'-0"	MILGARD		
109	PSA	1'-6"	8'-0"	1'-8 1/2"	8'-0 1/2"	0'-0"	11'-1 1/2"	8'-0"	MILGARD		
110	PSA	1'-6"	8'-0"	1'-8 1/2"	8'-0 1/2"	0'-0"	11'-1 1/2"	8'-0"	MILGARD		
111	PSA	1'-6"	8'-0"	1'-8 1/2"	8'-0 1/2"	0'-0"	11'-1 1/2"	8'-0"	MILGARD		
112	PSA	1'-6"	8'-0"	1'-8 1/2"	8'-0 1/2"	0'-0"	11'-1 1/2"	8'-0"	MILGARD		
113	PSA	3'-0"	8'-0"	3'-0 1/2"	8'-0 1/2"	0'-0"	11'-1 1/2"	8'-0"	MILGARD		
114	PSA	3'-0"	8'-0"	3'-0 1/2"	8'-0 1/2"	0'-0"	11'-1 1/2"	8'-0"	MILGARD		
115	PSA	3'-0"	8'-0"	3'-0 1/2"	8'-0 1/2"	0'-0"	11'-1 1/2"	8'-0"	MILGARD		
116	PSA	1'-6"	8'-0"	1'-8 1/2"	8'-0 1/2"	0'-0"	11'-1 1/2"	8'-0"	MILGARD		
117	PSA	1'-6"	8'-0"	1'-8 1/2"	8'-0 1/2"	0'-0"	11'-1 1/2"	8'-0"	MILGARD		
118	PSA	1'-6"	8'-0"	1'-8 1/2"	8'-0 1/2"	0'-0"	11'-1 1/2"	8'-0"	MILGARD		
119	PSA	1'-6"	8'-0"	1'-8 1/2"	8'-0 1/2"	0'-0"	11'-1 1/2"	8'-0"	MILGARD		
120	PSA	3'-0"	8'-0"	3'-0 1/2"	8'-1 1/2"	0'-0"	11'-1 1/2"	8'-0"	MILGARD		
121	PSA	3'-0"	8'-0"	3'-0 1/2"	8'-1 1/2"	0'-0"	11'-1 1/2"	8'-0"	MILGARD		
122	PSA	3'-0"	8'-0"	3'-0 1/2"	8'-1 1/2"	0'-0"	11'-1 1/2"	8'-0"	MILGARD		
123	PSA	3'-0"	8'-0"	3'-0 1/2"	8'-1 1/2"	0'-0"	11'-1 1/2"	8'-0"	MILGARD		
124	PSA	3'-0"	8'-0"	3'-0 1/2"	8'-1 1/2"	0'-0"	11'-1 1/2"	8'-0"	MILGARD		
125	PSA	3'-0"	8'-0"	3'-0 1/2"	8'-1 1/2"	0'-0"	11'-1 1/2"	8'-0"	MILGARD		
126	PSA	3'-0"	8'-0"	3'-0 1/2"	8'-1 1/2"	0'-0"	11'-1 1/2"	8'-0"	MILGARD		
127	PSA	1'-6"	8'-0"	1'-8 1/2"	8'-0 1/2"	0'-0"	11'-1 1/2"	8'-0"	MILGARD		
128	PSA	1'-6"	8'-0"	1'-8 1/2"	8'-0 1/2"	0'-0"	11'-1 1/2"	8'-0"	MILGARD		
129	PSA	1'-6"	8'-0"	1'-8 1/2"	8'-0 1/2"	0'-0"	11'-1 1/2"	8'-0"	MILGARD		
130	PSA	1'-6"	8'-0"	1'-8 1/2"	8'-0 1/2"	0'-0"	11'-1 1/2"	8'-0"	MILGARD		
131	PSA	1'-6"	8'-0"	1'-8 1/2"	8'-0 1/2"	0'-0"	11'-1 1/2"	8'-0"	MILGARD		
132	PSA	1'-6"	8'-0"	1'-8 1/2"	8'-0 1/2"	0'-0"	11'-1 1/2"	8'-0"	MILGARD		
133	PSA	1'-6"	8'-0"	1'-8 1/2"	8'-0 1/2"	0'-0"	11'-1 1/2"	8'-0"	MILGARD		
134	PSA	1'-6"	8'-0"	1'-8 1/2"	8'-0 1/2"	0'-0"	11'-1 1/2"	8'-0"	MILGARD		
135	PSA	1'-6"	8'-0"	1'-8 1/2"	8'-0 1/2"	0'-0"	11'-1 1/2"	8'-0"	MILGARD		
136	PSA	1'-6"	8'-0"	1'-8 1/2"	8'-0 1/2"	0'-0"	11'-1 1/2"	8'-0"	MILGARD		
137	PSA	1'-6"	8'-0"	1'-8 1/2"	8'-0 1/2"	0'-0"	11'-1 1/2"	8'-0"	MILGARD		
138	PSA	1'-6"	8'-0"	1'-8 1/2"	8'-0 1/2"	0'-0"	11'-1 1/2"	8'-0"	MILGARD		
139	PSA	1'-6"	8'-0"	1'-8 1/2"	8'-0 1/2"	0'-0"	11'-1 1/2"	8'-0"	MILGARD		
140	PSA	1'-6"	8'-0"	1'-8 1/2"	8'-0 1/2"	0'-0"	11'-1 1/2"	8'-0"	MILGARD		

**SMOKE DETECTOR LEGEND**

	SMOKE DETECTOR TO BE HARDWIRED AND INTERCONNECTED PER CODE
	COMBINED SMOKE AND CO DETECTOR TO BE HARDWIRED AND INTERCONNECTED PER CODE

**FLOOR AREA**

Name	Area	Comments
1ST FLOOR OFFICE	960 SF	
1ST FLOOR RESID.	728 SF	
2ND FLOOR OFFICE	903 SF	
2ND FLOOR RESID.	628 SF	
GARAGE	1348 SF	
STUDIO	343 SF	
<b>TOTAL</b>	<b>4909 SF</b>	

**PLAN NOTES**

- ALL DIMENSIONS TO FINISH, UNLESS NOTED OTHERWISE;
- REFERENCE A1.\_\_\_\_\_ FOR DIMENSIONS TO FRAMING
- ROOM AREAS INCLUDE MISCELLANEOUS ADJACENT STORAGE
- ALL FLOOR AREA CALCULATIONS ARE TO THE OUTSIDE FINISH FACE FOR ALL ENCLOSED AREAS WITH A CEILING HEIGHT OF 5'-0" OR GREATER.

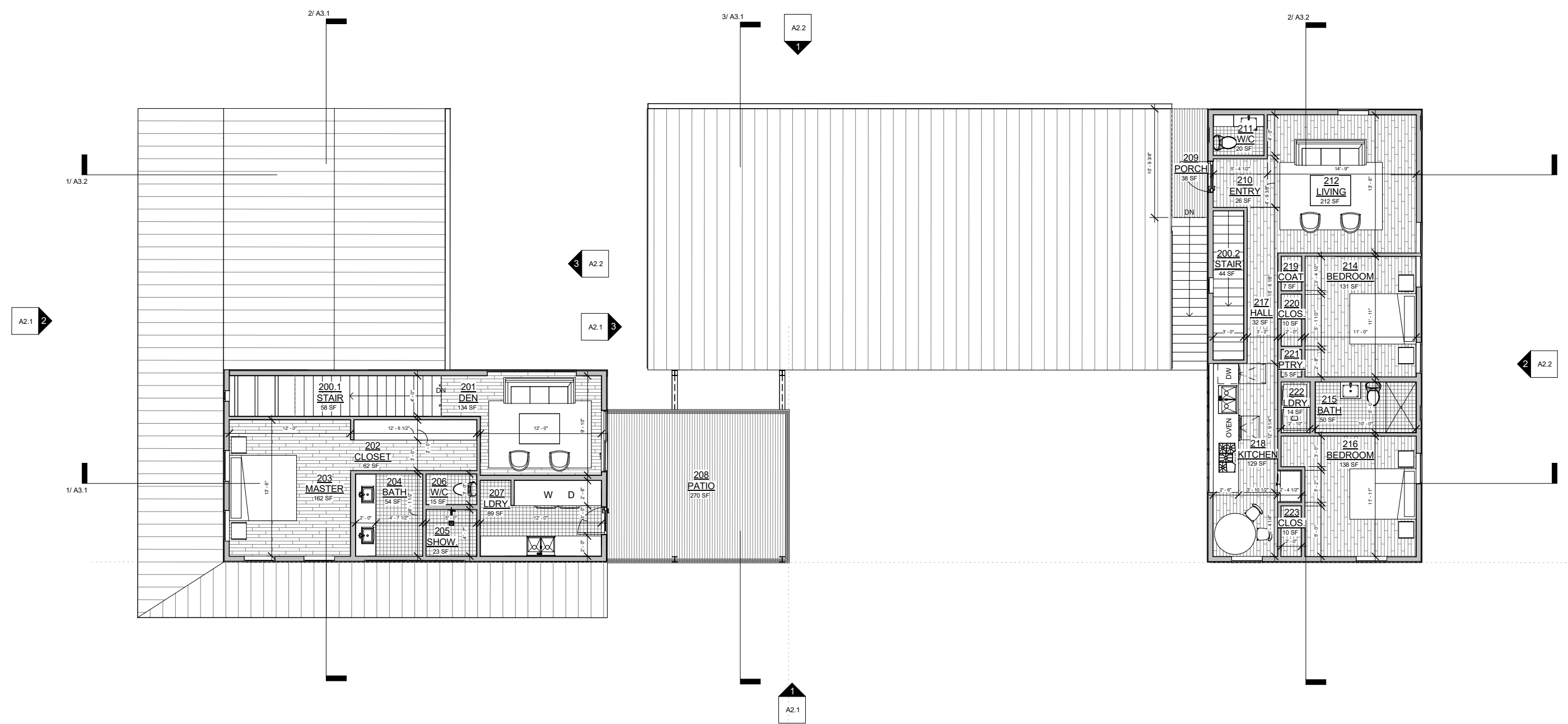
BASTROP RESIDENCE

09-15-2022

SCALE: As indicated

SECOND FLOOR PLAN

A1.2



**DOOR SCHEDULE**  
\*THIS SCHEDULE IS FOR QUICK REFERENCE ONLY - REFER TO A8.1 FOR MORE EXTENSIVE NOTES AND REQUIREMENTS  
\*ALL GLAZING IN DOORS TO BE TEMPERED

MARK	DESCRIPTION	HARDWARE TYPE	OPERATION	WIDTH	HEIGHT	JAMB DEPTH	JAMB WIDTH	MANUFACTURER	MODEL	NOTES	Rough Height	Rough Width
52	AL	DB	SWING SAMPLE	3'-0"	8'-0"	0'-7 1/4"	0'-0 3/4"	Vitawall				0'-0 3/4"
53	AL	DB	SWING SAMPLE	3'-0"	8'-0"	0'-7 1/4"	0'-0 3/4"	Vitawall				0'-0 3/4"
54	AL	DB	SWING SAMPLE	3'-0"	8'-0"	0'-7 1/4"	0'-0 3/4"	Vitawall				0'-0 3/4"
55	AL	DB	SWING SAMPLE	3'-0"	8'-0"	0'-7 1/4"	0'-0 3/4"	Vitawall				0'-0 3/4"
56	AL	DB	SWING SAMPLE	3'-0"	8'-0"	0'-7 1/4"	0'-0 3/4"	Vitawall				0'-0 3/4"
57	GAR		OVERHEAD	8'-0"	8'-0"	0'-7 1/4"	0'-0 3/4"	4 Panel, Flat Metal	PAINTED (COLOR T.B.D.)			
58	GAR		OVERHEAD	8'-0"	8'-0"	0'-7 1/4"	0'-0 3/4"	4 Panel, Flat Metal	PAINTED (COLOR T.B.D.)			
59	GAR		OVERHEAD	8'-0"	10'-0"	0'-7 1/4"	0'-0 3/4"	4 Panel, Flat Metal	PAINTED (COLOR T.B.D.)			
60	AL	DB	SWING SAMPLE	3'-0"	8'-0"	0'-7 1/4"	0'-0 3/4"	Vitawall			0'-8 1/2"	0'-0 3/4"
61	SL	LA	OK	6'-0"	6'-6"	0'-7 1/4"	0'-0 3/4"	© 2013 M Windows and Doors	420		0'-8 1/2"	0'-0 1/2"
62	AL	DB	SWING SAMPLE	2'-8"	8'-0"	0'-7 1/4"	0'-0 3/4"	Vitawall				0'-0 3/4"
63	AL	DB	SWING SAMPLE	3'-0"	8'-0"	0'-7 1/4"	0'-0 3/4"	Vitawall				0'-0 3/4"
64	GAR		OVERHEAD	10'-0"	8'-0"	0'-7 1/4"	0'-0 3/4"	4 Panel, Flat Metal	PAINTED (COLOR T.B.D.)			

**WINDOW SCHEDULE**  
\*THIS SCHEDULE IS FOR QUICK REFERENCE ONLY - REFER TO A8.1 FOR MORE EXTENSIVE NOTES AND REQUIREMENTS

MARK	DESCRIPTION	UNIT WIDTH	UNIT HEIGHT	FRAMING				TEMPERED	EGRESS	MANUFACTURER	NOTES
				RO WIDTH	RO HEIGHT	RO SILL	RO HEAD				
65	HSW	3'-0 1/2"	6'-1 1/2"	2'-0"	2'-0"	2'-0"	6'-1 1/2"		Milgard		
66	HSW	3'-0 1/2"	6'-1 1/2"	2'-0"	2'-0"	2'-0"	6'-1 1/2"		Milgard		
67	HSW	3'-0 1/2"	6'-1 1/2"	2'-0"	2'-0"	2'-0"	6'-1 1/2"		Milgard		
68	HSW	3'-0 1/2"	6'-1 1/2"	2'-0"	2'-0"	2'-0"	6'-1 1/2"		Milgard		
69	HSW	3'-0 1/2"	6'-1 1/2"	2'-0"	2'-0"	2'-0"	6'-1 1/2"		Milgard		
70	HSW	3'-0 1/2"	6'-1 1/2"	2'-0"	2'-0"	2'-0"	6'-1 1/2"		Milgard		
71	HSW	3'-0 1/2"	6'-1 1/2"	2'-0"	2'-0"	2'-0"	6'-1 1/2"		Milgard		
72	HSW	3'-0 1/2"	6'-1 1/2"	2'-0"	2'-0"	2'-0"	6'-1 1/2"		Milgard		
73	HSW	3'-0 1/2"	6'-1 1/2"	2'-0"	2'-0"	2'-0"	6'-1 1/2"		Milgard		
74	HSW	3'-0 1/2"	6'-1 1/2"	2'-0"	2'-0"	2'-0"	6'-1 1/2"		Milgard		
75	HSW	3'-0"	5'-1 1/2"	3'-0"	3'-0"	3'-0"	6'-1 1/2"		Milgard		
76	HSW	3'-0"	5'-1 1/2"	3'-0"	3'-0"	3'-0"	6'-1 1/2"		Milgard		
77	HSW	3'-0"	5'-1 1/2"	3'-0"	3'-0"	3'-0"	6'-1 1/2"		Milgard		
78	HSW	3'-0"	5'-1 1/2"	3'-0"	3'-0"	3'-0"	6'-1 1/2"		Milgard		
79	HSW	3'-0"	5'-1 1/2"	3'-0"	3'-0"	3'-0"	6'-1 1/2"		Milgard		
80	HSW	3'-0"	5'-1 1/2"	3'-0"	3'-0"	3'-0"	6'-1 1/2"		Milgard		
81	HSW	3'-0"	5'-1 1/2"	3'-0"	3'-0"	3'-0"	6'-1 1/2"		Milgard		
82	HSW	3'-0"	5'-1 1/2"	3'-0"	3'-0"	3'-0"	6'-1 1/2"		Milgard		
83	HSW	8'-0"	1'-6"	1'-6"	1'-6"	1'-6"	4'-6"		Milgard		
84	PSA	1'-6"	8'-0"	1'-6"	8'-0"	0'-0"	11'-4 1/2"	4'-6"	MILGARD		
85	HSW	8'-0"	1'-7 1/2"	1'-7 1/2"	8'-0"	0'-0"	11'-4 1/2"	4'-6"	Milgard		
86	HSW	9'-10 1/2"	1'-7 1/2"	1'-7 1/2"	9'-10 1/2"	0'-0"	11'-4 1/2"	4'-6"	Milgard		
87	HSW	7'-0"	1'-7 1/2"	1'-7 1/2"	7'-0"	0'-0"	11'-4 1/2"	4'-6"	Milgard		
88	PSA	7'-4"	4'-0"	7'-4"	4'-1 1/4"	3'-0"	7'-1 1/4"	7'-0"	MILGARD		
89	PSA	7'-4"	4'-0"	7'-4"	4'-1 1/4"	3'-0"	7'-1 1/4"	7'-0"	MILGARD		
90	PSA	8'-1 1/2"	2'-0"	8'-2"	2'-1"	8'-10 1/4"	5'-1"	8'-10 1/4"	MILGARD		
91	PSA	8'-1 1/2"	2'-0"	8'-2"	2'-1"	8'-10 1/4"	5'-1"	8'-10 1/4"	MILGARD		
92	PSA	3'-1 1/2"	2'-0"	3'-2"	2'-1"	8'-10 1/4"	5'-1"	8'-10 1/4"	MILGARD		
93	PSA	1'-6"	8'-0"	1'-6 1/2"	8'-0 1/2"	0'-0 3/8"	11'-4 1/2"	8'-0 3/8"	MILGARD		
94	PSA	3'-0"	8'-0"	3'-0 1/2"	8'-0"	0'-0"	11'-1"	8'-0"	MILGARD		
95	PSA	3'-0"	8'-0"	3'-0 1/2"	8'-0"	0'-0"	11'-1"	8'-0"	MILGARD		
96	PSA	3'-0"	8'-0"	3'-0 1/2"	8'-0"	0'-0"	11'-1"	8'-0"	MILGARD		
97	PSA	3'-0"	8'-0"	3'-0 1/2"	8'-0"	0'-0"	11'-1"	8'-0"	MILGARD		
98	PSA	1'-0"	8'-0"	1'-0 1/2"	8'-0"	0'-0"	11'-1"	8'-0"	MILGARD		
99	PSA	3'-0"	8'-0"	3'-0 1/2"	8'-0"	0'-0"	11'-1"	8'-0"	MILGARD		
100	PSA	3'-0"	8'-0"	3'-0 1/2"	8'-0"	0'-0"	11'-1"	8'-0"	MILGARD		
101	PSA	1'-6"	1'-6"	1'-6 1/2"	1'-6 1/2"	0'-0"	4'-8 1/2"	4'-6"	MILGARD		
102	PSA	1'-6"	1'-6"	1'-6 1/2"	1'-6 1/2"	0'-0"	4'-8 1/2"	4'-6"	MILGARD		
103	PSA	1'-6"	1'-6"	1'-6 1/2"	1'-6 1/2"	0'-0"	4'-8 1/2"	4'-6"	MILGARD		
104	PSA	1'-6"	1'-6"	1'-6 1/2"	1'-6 1/2"	0'-0"	4'-8 1/2"	4'-6"	MILGARD		
105	PSA	1'-6"	1'-6"	1'-6 1/2"	1'-6 1/2"	0'-0"	4'-8 1/2"	4'-6"	MILGARD		
106	PSA	1'-6"	1'-6"	1'-6 1/2"	1'-6 1/2"	0'-0"	4'-8 1/2"	4'-6"	MILGARD		
107	PSA	1'-6"	1'-6"	1'-6 1/2"	1'-6 1/2"	0'-0"	4'-8 1/2"	4'-6"	MILGARD		
108	PSA	1'-6"	1'-6"	1'-6 1/2"	1'-6 1/2"	0'-0"	4'-8 1/2"	4'-6"	MILGARD		
109	PSA	1'-6"	1'-6"	1'-6 1/2"	1'-6 1/2"	0'-0"	4'-8 1/2"	4'-6"	MILGARD		
110	PSA	1'-6"	1'-6"	1'-6 1/2"	1'-6 1/2"	0'-0"	4'-8 1/2"	4'-6"	MILGARD		
111	PSA	1'-6"	1'-6"	1'-6 1/2"	1'-6 1/2"	0'-0"	4'-8 1/2"	4'-6"	MILGARD		
112	PSA	1'-6"	1'-6"	1'-6 1/2"	1'-6 1/2"	0'-0"	4'-8 1/2"	4'-6"	MILGARD		
113	PSA	3'-0"	8'-0"	3'-0 1/2"	8'-0"	0'-0"	11'-1"	8'-0"	MILGARD		
114	PSA	3'-0"	8'-0"	3'-0 1/2"	8'-0"	0'-0"	11'-1"	8'-0"	MILGARD		
115	PSA	3'-0"	8'-0"	3'-0 1/2"	8'-0"	0'-0"	11'-1"	8'-0"	MILGARD		
116	PSA	1'-6"	1'-6"	1'-6 1/2"	1'-6 1/2"	0'-0"	4'-8 1/2"	4'-6"	MILGARD		
117	PSA	1'-6"	1'-6"	1'-6 1/2"	1'-6 1/2"	0'-0"	4'-8 1/2"	4'-6"	MILGARD		
118	PSA	1'-6"	1'-6"	1'-6 1/2"	1'-6 1/2"	0'-0"	4'-8 1/2"	4'-6"	MILGARD		
119	PSA	1'-6"	1'-6"	1'-6 1/2"	1'-6 1/2"	0'-0"	4'-8 1/2"	4'-6"	MILGARD		
120	PSA	3'-0"	8'-0"	3'-0 1/2"	8'-0"	0'-0"	11'-1"	8'-0"	MILGARD		
121	PSA	3'-0"	8'-0"	3'-0 1/2"	8'-0"	0'-0"	11'-1"	8'-0"	MILGARD		
122	PSA	3'-0"	8'-0"	3'-0 1/2"	8'-0"	0'-0"	11'-1"	8'-0"	MILGARD		
123	PSA	3'-0"	8'-0"	3'-0 1/2"	8'-0"	0'-0"	11'-1"	8'-0"	MILGARD		
124	PSA	3'-0"	8'-0"	3'-0 1/2"	8'-0"	0'-0"	11'-1"	8'-0"	MILGARD		
125	PSA	3'-0"	8'-0"	3'-0 1/2"	8'-0"	0'-0"	11'-1"	8'-0"	MILGARD		
126	PSA	3'-0"	8'-0"	3'-0 1/2"	8'-0"	0'-0"	11'-1"	8'-0"	MILGARD		
127	PSA	1'-6"	1'-6"	1'-6 1/2"	1'-6 1/2"	0'-0"	4'-8 1/2"	4'-6"	MILGARD		
128	PSA	1'-6"	1'-6"	1'-6 1/2"	1'-6 1/2"	0'-0"	4'-8 1/2"	4'-6"	MILGARD		
129	PSA	1'-6"	1'-6"	1'-6 1/2"	1'-6 1/2"	0'-0"	4'-8 1/2"	4'-6"	MILGARD		
130	PSA	1'-6"	1'-6"	1'-6 1/2"	1'-6 1/2"	0'-0"	4'-8 1/2"	4'-6"	MILGARD		
131	PSA	1'-6"	1'-6"	1'-6 1/2"	1'-6 1/2"	0'-0"	4'-8 1/2"	4'-6"	MILGARD		
132	PSA	1'-6"	1'-6"	1'-6 1/2"	1'-6 1/2"	0'-0"	4'-8 1/2"	4'-6"	MILGARD		
133	PSA	1'-6"	1'-6"	1'-6 1/2"	1'-6 1/2"	0'-0"	4'-8 1/2"	4'-6"	MILGARD		
134	PSA	1'-6"	1'-6"	1'-6 1/2"	1'-6 1/2"	0'-0"	4'-8 1/2"	4'-6"	MILGARD		
135	PSA	1'-6"	1'-6"	1'-6 1/2"	1'-6 1/2"	0'-0"	4'-8 1/2"	4'-6"	MILGARD		
136	PSA	1'-6"	1'-6"	1'-6 1/2"	1'-6 1/2"	0'-0"	4'-8 1/2"	4'-6"	MILGARD		
137	PSA	1'-6"	1'-6"	1'-6 1/2"	1'-6 1/2"	0'-0"	4'-8 1/2"	4'-6"	MILGARD		
138	PSA	1'-6"	1'-6"	1'-6 1/2"	1'-6 1/2"	0'-0"	4'-8 1/2"	4'-6"	MILGARD		
139	PSA	1'-6"	1'-6"	1'-6 1/2"	1'-6 1/2"	0'-0"	4'-8 1/2"	4'-6"	MILGARD		
140	PSA	1'-6"	1'-6"	1'-6 1/2"	1'-6 1/2"	0'-0"	4'-8 1/2"	4'-6"	MILGARD		

**SMOKE DETECTOR LEGEND**

	SMOKE DETECTOR TO BE HARDWIRED AND INTERCONNECTED PER CODE
	COMBINED SMOKE AND CO DETECTOR TO BE HARDWIRED AND INTERCONNECTED PER CODE

**FLOOR AREA**

Name	Area	Comments
1ST FLOOR OFFICE	960 SF	
1ST FLOOR RESID.	728 SF	
2ND FLOOR OFFICE	903 SF	
2ND FLOOR RESID.	628 SF	
GARAGE	1348 SF	
STUDIO	343 SF	
<b>TOTAL</b>	<b>4909 SF</b>	

**PLAN NOTES**

- ALL DIMENSIONS TO FINISH, UNLESS NOTED OTHERWISE;
- REFERENCE A1.\_\_\_\_\_ FOR DIMENSIONS TO FRAMING
- ROOM AREAS INCLUDE MISCELLANEOUS ADJACENT STORAGE
- ALL FLOOR AREA CALCULATIONS ARE TO THE OUTSIDE FINISH FACE FOR ALL ENCLOSED AREAS WITH A CEILING HEIGHT OF 5'-0" OR GREATER.

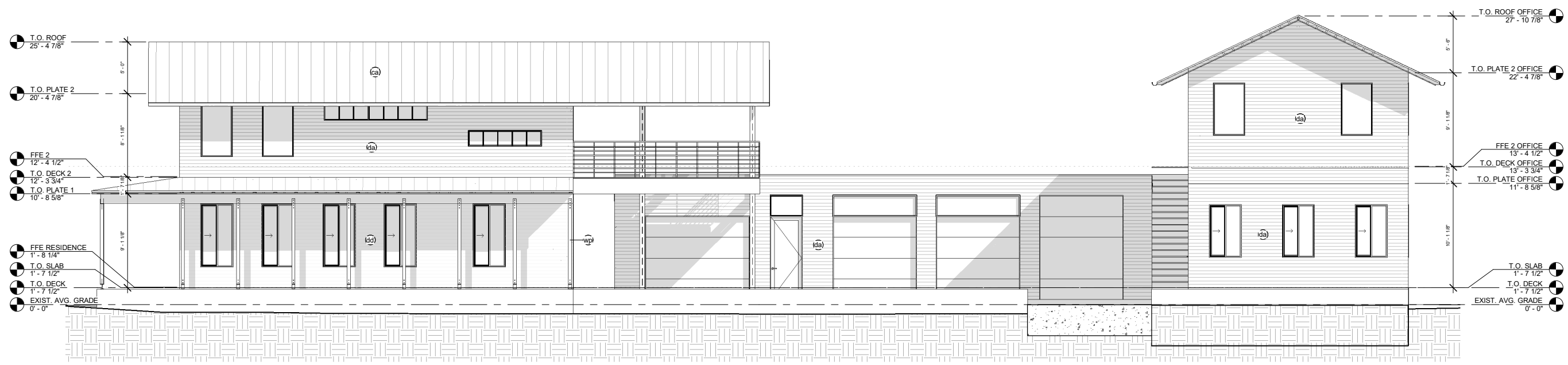
**BASTROP RESIDENCE**

09-15-2022

SCALE: 3/16" = 1'-0"

ELEVATIONS

**A2.1**



**1**



**2**



**3**

MATERIAL LIST			
MARK	MATERIAL NAME	MATERIAL DESCRIPTION	COMMENTS
ca	Galvalume Standing Seam Metal Roof	Aluminum standing seam roofing	Per "Roofing Notes" A5
cz	Roof Sheathing		Per "Roofing Notes" A5
da	Shiplap Metal Siding (driftwood)	Vesta Shiplap Metal Siding (woodgrain)	HD3 Woodgrain 482 "Gilded Grain", variegated 5
dd	Shiplap Metal Siding (cedar)	Vesta Shiplap Metal Siding (woodgrain)	HD3 Woodgrain 481 "Driftwood", variegated 5
ea	1/2" Gypsum Wall Board		Per "Drywall and Paint Notes" A5
eb	5/8" Gypsum Wall Board		Per "Drywall and Paint Notes" A5
gb	Tongue & Groove Ceiling	1x4 douglas fir	Painted (stained)
ji	Millwork	Full overlay, flat panel, walnut, rift-sawn	
lo	Plywood, Sheathing	Plywood, sheathing grade	
pa	Steel Angle	Steel, Powdercoated, Color TBD	
sp	1/4" Steel plate planter	Steel, mill finish	
wp	4x4 Wood Post	Cedar, smooth	Stained
ya	Wood Flooring	Engineered, 3/4" thick	
yb	Tile Flooring		
yc	Wood Decking	3/4 x 4 cedar or cypress, stained w/ penofin	



TORNBJERGDESIGN

WWW.TT-DB.COM

tom@tt-db.com

512.293.7842



09-15-2022

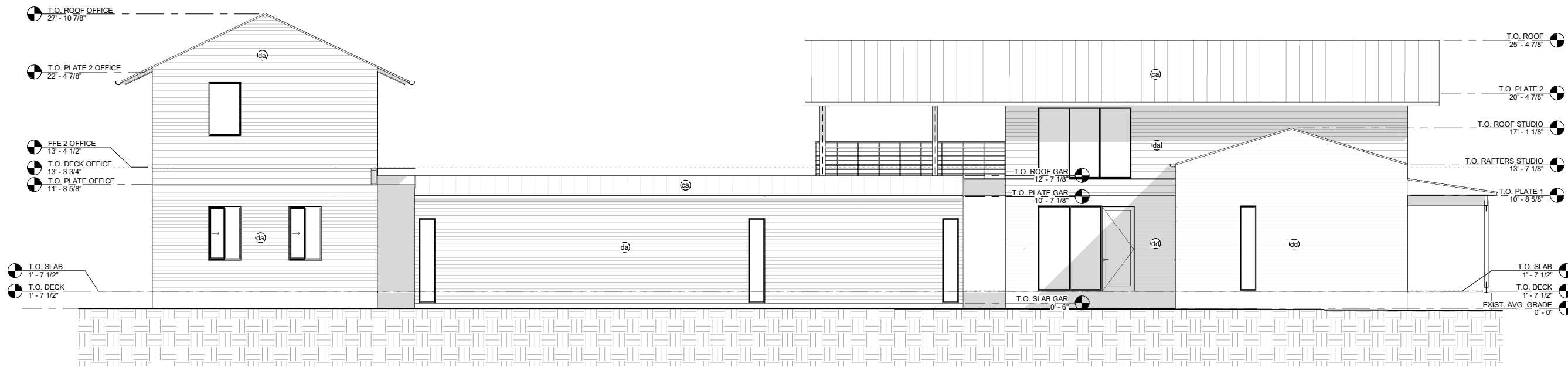
# BASTROP RESIDENCE

09-15-2022

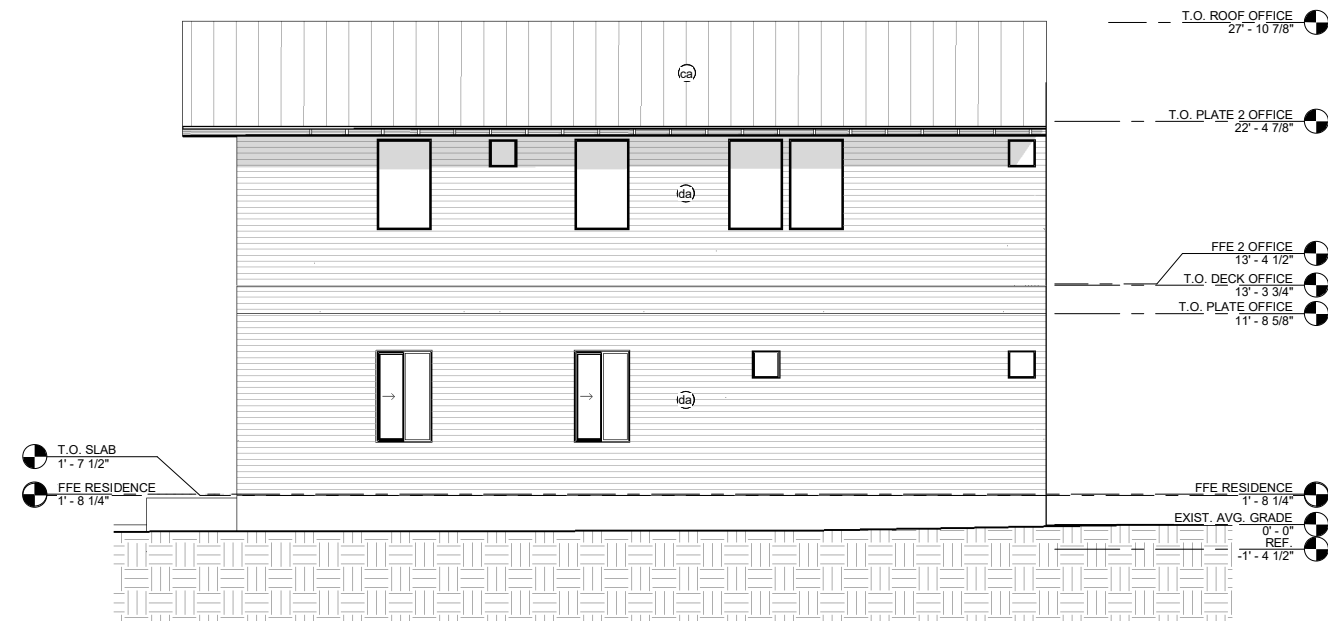
SCALE: 3/16" = 1'-0"

ELEVATIONS

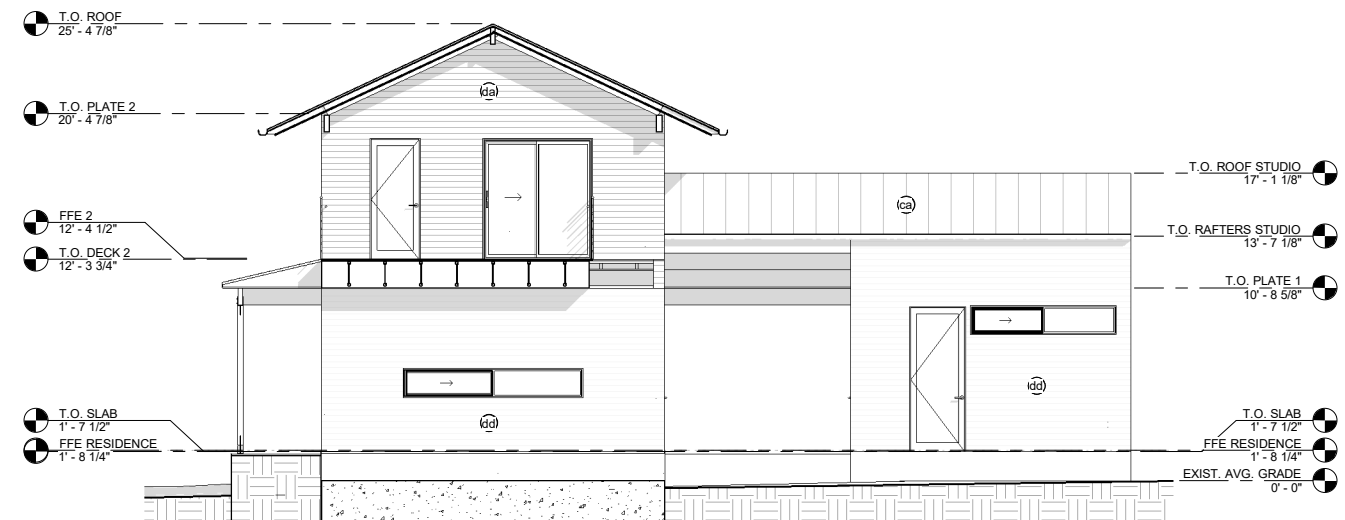
# A2.2



# 1



# 2



# 3

MATERIAL LIST			
MARK	MATERIAL NAME	MATERIAL DESCRIPTION	COMMENTS
ca	Galvalume Standing Seam Metal Roof	Aluminum standing seam roofing	Per "Roofing Notes" A5
cz	Roof Sheathing		Per "Roofing Notes" A5
da	Shiplap Metal Siding (driftwood)	Vesta Shiplap Metal Siding (woodgrain)	HD3 Woodgrain 482 "Gilded Grain", variegate 5
dd	Shiplap Metal Siding (cedar)	Vesta Shiplap Metal Siding (woodgrain)	HD3 Woodgrain 481 "Driftwood", variegate 5
ea	1/2" Gypsum Wall Board		Per "Drywall and Paint Notes" A5
eb	5/8" Gypsum Wall Board		Per "Drywall and Paint Notes" A5
gb	Tongue & Groove Ceiling	1x4 douglas fir	Painted (stained)
ji	Millwork	Full overlay, flat panel, walnut, rift-sawn	
lo	Plywood, Sheathing	Plywood, sheathing grade	
pa	Steel Angle	Steel, Powdercoated, Color TBD	
sp	1/4" Steel plate planter	Steel, mill finish	
wp	4x4 Wood Post	Cedar, smooth	Stained
ya	Wood Flooring	Engineered, 3/4" thick	
yb	Tile Flooring		
yc	Wood Decking	3/4 x 4 cedar or cypress, stained w/ penofin	