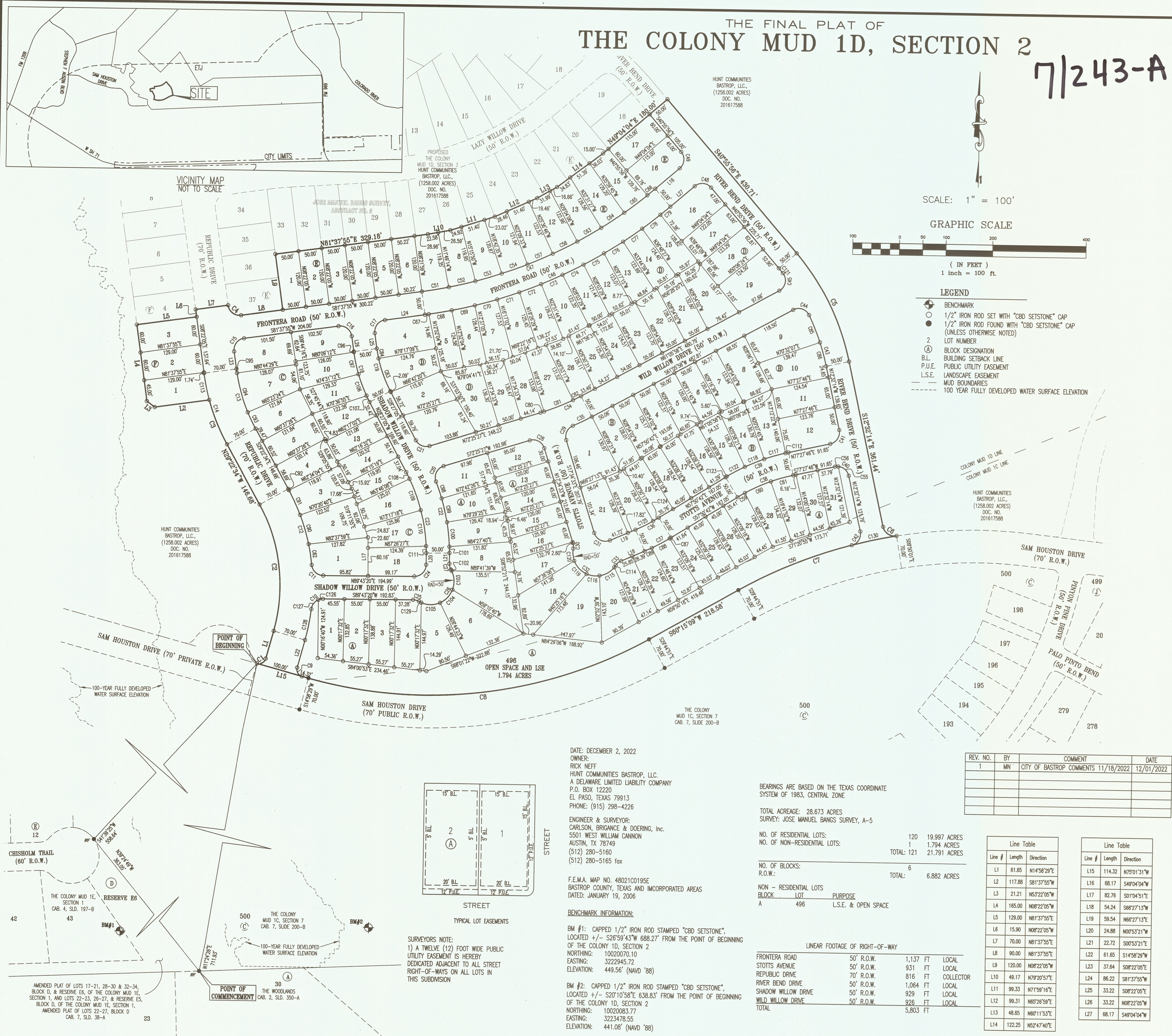


THE FINAL PLAT OF THE COLONY MUD 1D, SECTION 2

7/243-A

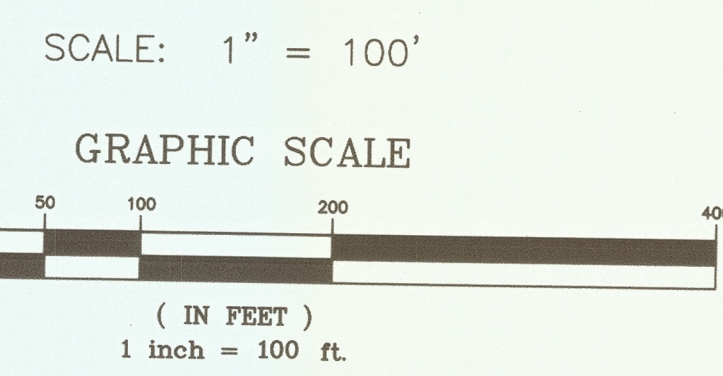


Curve Table

Curve #	Length	Radius	Chord Direction	Chord Length	Tangent	DELTA
C1	23.56	15.00	N59°58'29"E	21.21	15.00	90°00'00"
C2	279.44	361.00	N07°12'03"W	272.51	147.14	44°21'03"
C3	102.53	439.00	N22°41'08"W	102.30	51.50	132°23'51"
C4	39.27	25.00	S53°22'05"E	35.36	25.00	90°00'00"
C5	280.18	525.00	S28°44'05"E	257.53	132.82	282°23'42"
C6	38.09	25.00	S56°11'07"E	34.51	23.85	87°17'47"
C7	359.89	1035.00	S70°12'38"W	357.89	181.68	195°44'33"
C8	753.23	965.00	S82°36'49"W	734.25	398.98	44°43'19"
C9	23.56	15.00	S30°01'31"E	21.21	15.00	90°00'00"
C10	36.52	25.00	S47°52'11"W	33.36	22.39	83°42'18"
C11	36.52	25.00	S48°25'31"E	33.36	22.39	83°42'18"
C12	171.53	431.00	S17°58'28"E	170.40	86.92	22°48'12"
C13	135.30	369.00	S18°32'20"E	134.54	68.42	21°00'29"
C14	160.96	439.00	S18°52'20"E	160.06	81.40	21°00'29"
C15	39.27	25.00	S36°37'56"W	35.36	25.00	90°00'00"
C16	39.27	25.00	N63°22'05"W	35.36	25.00	90°00'00"
C17	39.27	25.00	S36°37'55"W	35.36	25.00	90°00'00"
C18	113.92	325.00	N18°24'35"W	113.34	57.55	20°05'00"
C19	96.39	275.00	S18°24'35"E	95.90	48.70	20°05'00"
C20	41.22	25.00	S25°11'41"W	36.70	27.03	94°27'31"
C21	34.52	25.00	S88°00'49"E	31.85	20.85	79°07'28"
C22	156.85	425.00	S11°27'43"E	155.96	79.33	21°08'43"
C23	180.39	375.00	N14°40'13"W	178.66	91.98	27°33'44"
C24	39.54	25.00	N44°24'58"E	35.54	25.27	90°36'41"
C25	13.17	25.00	N79°11'16"W	13.02	6.74	30°10'48"
C26	131.75	50.00	S44°24'58"W	98.61	193.14	150°58'17"
C27	13.17	25.00	S19°58'45"E	13.02	6.74	30°10'48"
C28	39.27	25.00	N62°34'33"W	35.36	25.00	90°00'00"
C29	36.49	25.00	S24°14'06"W	33.33	22.36	83°37'19"
C30	11.61	25.00	N04°16'21"W	11.51	5.91	26°36'24"
C31	41.88	25.00	S65°33'40"E	37.15	27.75	95°58'14"
C32	137.02	50.00	N69°28'35"W	97.99	245.91	157°00'51"
C33	15.03	25.00	S49°14'06"W	14.80	7.75	34°28'13"
C34	93.88	475.00	N66°45'43"E	93.73	47.10	11°19'28"
C35	45.32	525.00	S63°34'22"W	45.31	22.88	4°56'47"
C36	56.34	375.00	N62°08'57"E	56.29	28.22	8°36'31"
C37	63.86	425.00	S62°08'57"W	63.80	31.99	8°36'31"
C38	128.40	375.00	S67°39'14"W	127.77	64.83	19°37'04"
C39	145.52	425.00	N67°39'14"E	144.81	73.48	19°37'04"
C40	39.27	25.00	N57°32'14"W	35.36	25.00	90°00'00"
C41	39.27	25.00	N32°27'46"E	35.36	25.00	90°00'00"
C42	38.09	25.00	N31°06'40"E	34.51	23.85	87°17'47"
C43	115.90	475.00	N19°31'38"W	115.61	58.24	13°36'48"
C44	40.31	25.00	N72°42'32"E	36.08	26.06	92°23'00"
C45	43.81	25.00	N10°53'46"E	38.42	30.01	100°24'25"
C46	582.56	1025.00	S85°21'00"W	574.75	299.38	32°33'51"
C47	554.14	975.00	S85°21'00"W	546.71	284.78	32°33'51"
C48	39.27	25.00	N85°55'56"W	35.36	25.00	90°00'00"
C49	39.27	25.00	S04°04'04"W	35.36	25.00	90°00'00"
C50	282.02	1035.00	S67°30'25"W	281.32	131.71	14°30'17"
C51	58.75	975.00	N79°54'21"E	58.74	29.38	327°09"
C52	58.59	975.00	N76°27'28"E	58.58	29.31	326°35"
C53	58.64	975.00	N73°00'49"E	58.63	29.33	326°45"
C54	58.70	975.00	N69°33'56"E	58.69	29.36	326°58"
C55	31.95	25.00	N49°09'02"W	29.82	18.58	73°13'37"
C56	7.32	25.00	S85°50'58"W	7.29	3.89	164°62'33"
C57	58.77	975.00	N66°06'51"E	58.76	29.39	327°12"
C58	58.80	975.00	N62°39'34"E	58.80	29.41	327°20"
C59	18.16	375.00	S59°13'57"W	18.16	9.08	246°51"
C60	80.81	375.00	S85°19'56"W	80.74	30.47	91°17'27"
C61	49.43	375.00	S73°41'13"W	49.39	24.75	73°30'6"
C62	45.34	431.00	N09°35'11"W	45.32	22.89	601°38"
C63	58.61	975.00	N59°12'14"E	58.60	29.41	327°21"
C64	59.08	975.00	N55°44'24"E	59.07	29.55	328°18"
C65	62.17	975.00	N62°10'39"E	62.16	31.10	339°13"
C66	21.83	975.00	N49°42'33"E	21.83	10.91	116°58"

Curve Table

Curve #	Length	Radius	Chord Direction	Chord Length	Tangent	DELTA
C67	8.40	1025.00	N81°23'50"E	8.40	4.20	0°28'11"
C68	50.06	1025.00	N79°45'48"E	50.05	25.03	2°47'53"
C69	50.56	1025.00	N76°57'04"E	50.55	25.28	2°49'34"
C70	49.55	1025.00	N74°09'12"E	49.55	24.78	2°48'12"
C71	50.01	1025.00	N71°22'14"E	50.01	25.01	2°47'44"
C72	50.02	1025.00	N68°34'29"E	50.02	25.02	2°47'46"
C73	50.12	1025.00	N65°46'34"E	50.11	25.06	2°48'05"
C74	50.01	1025.00	N62°58'39"E	50.01	25.01	2°47'44"
C75	50.01	1025.00	N60°10'55"E	50.00	25.01	2°47'43"
C76	48.01	1025.00	N57°26'32"E	48.01	24.01	2°41'02"
C77	49.19	1025.00	N54°43'32"E	49.19	24.60	2°45'00"
C78	49.16	1025.00	N51°58'35"E	49.16	24.59	2°44'53"
C79	27.45	1025.00	N49°09'06"E	27.45	13.73	1°32'04"
C80	8.11	475.00	N71°56'06"E	8.11	4.06	0°58'42"
C81	66.62	475.00	N67°25'39"E	66.57	33.37	8°02'11"
C82	19.15	475.00	N62°15'16"E	19.15	9.58	2°18'35"
C83	74.79	275.00	S20°39'37"E	74.56	37.63	15°34'55"
C84	21.60	275.00	S10°37'07"E	21.60	10.81	4°30'05"
C85	63.20	475.00	N52°42'30"E	63.15	31.65	7°37'24"
C86	52.70	475.00	N15°42'56"W	52.67	26.38	6°21'25"
C87	3.36	425.00	N58°04'17"E	3.36	1.68	0°27'10"
C88	43.42	425.00	N52°11'29"E	43.40	21.73	5°51'13"
C89	17.08	425.00	N65°18'09"E	17.07	8.54	2°18'07"
C90	64.99	431.00	N16°55'12"W	64.93	32.56	8°38'23"
C91	58.08	431.00	N26°09'00"W	58.03	29.08	7°43'14"
C92	3.13	431.00	N29°10'06"W	3.13	1.56	0°24'57"
C93	39.06	369.00	S26°20'38"E	39.04	19.55	6°03'53"
C94	87.22	369.00	S16°32'24"E	87.02	43.61	13°32'35"
C95	9.02	369.00	S09°04'06"E	9.02	4.51	1°24'02"
C96	1.16	325.00	S08°28'12"E	1.16	0.58	0°12'15"
C97	48.52	325.00	S12°50'56"E	48.47	24.30	8°33'13"
C98	38.11	425.00	S19°27'56"E	38.10	19.07	5°08'17"
C99	52.14	425.00	S13°22'50"E	52.10	26.10	7°01'43"
C100	52.78	425.00	S06°18'37"E	52.74	26.42	7°06'54"
C101	13.82	425.00	S01°49'16"E	13.82	6.91	1°51'49"
C102	3.04	50.00	S29°19'48"E	3.03	1.52	3°28'42"
C103	41.84	50.00	S03°37'01"E	40.63	22.23	4°56'52"
C104	39.48	50.00	S42°58'29"W	38.46	20.83	45°14'08"
C105	41.68	50.00	S89°28'32"W	40.49	22.14	47°45'58"
C106	49.00	325.00	S21°26'42"E	48.95	24.56	8°38'19"
C107	15.24	325.00	S27°06'28"E	15.24	7.62	2°11'14"
C108	15.97	375.00	N27°13'52"W	15.97	7.99	2°28'25"
C109	71.65	375.00	N20°32'15"W	71.54	35.93	10°56'49"
C110	77.80	375.00	N09°07'14"W	77.66	39.04	11°53'15"
C111	14.97	375.00	N02°01'59"W	14.97	7.49	2°17'15"
C112	6.25	425.00	S77°02'29"W	6.25	3.13	0°50'36"
C113	58.44	439.00	N12°10'53"W	58.39	29.26	7°37'36"
C114	5.22	50.00	N35°00'19"E	5.21	2.61	5°58'38"
C115	37.38	50.00	N69°24'33"E	36.51	19.61	42°49'51"
C116	28.19	50.00	S83°01'28"E	27.82	14.48	32°18'08"
C117	47.58	425.00	S73°24'44"W	47.56	23.82	6°24'54"
C118	44.76	425.00	S67°11'16"W	44.74	22.40	8°02'02"
C119	39.44	50.00	S41°16'40"E	38.42	20.81	45°11'28"
C120	26.80	50.00	S06°19'32"E	26.48	13.73	3°42'46"
C121	13.47	475.00	N47°07'11"W	13.47	6.74	1°37'29"
C122	43.88	425.00	S61°12'47"W	43.86	21.96	5°54'54"
C123	3.05	425.00	S58°03'01"W	3.05	1.52	0°24'38"
C124	14.34	375.00	N58°56'26"E	14.34	7.17	2°11'29"
C125	42.00	375.00	N63°14'42"E	41.98	21.02	6°25'02"
C126	10.08	25.00	S78°10'27"W	10.01	5.11	23°05'46"
C127	28.45	25.00	S36°19'18"W	25.23	14.61	6°03'32"
C128	67.38	431.00	S10°29'46"W	67.31	33.76	8°57'27"
C129	5.71	50.00	N63°22'11"W	5.71	2.86	6°32'37"
C130	97.68	1035.00	S77°27'46"W	97.64	48.88	5°24'26"



- LEGEND**
- BENCHMARK
 - 1/2" IRON ROD SET WITH "CBD SETSTONE" CAP
 - 1/2" IRON ROD FOUND WITH "CBD SETSTONE" CAP (UNLESS OTHERWISE NOTED)
 - 2 LOT NUMBER
 - BLOCK DESIGNATION
 - BUILDING SETBACK LINE
 - PUBLIC UTILITY EASEMENT
 - LANDSCAPE EASEMENT
 - MUD BOUNDARIES
 - 100 YEAR FULLY DEVELOPED WATER SURFACE ELEVATION

REV. NO. BY COMMENT DATE

1	MN	CITY OF BASTROP COMMENTS 11/18/2022	12/01/2022
---	----	-------------------------------------	------------

Line Table

Line #	Length	Direction
L1	61.65	N14°58'29"E
L2	117.88	S81°37'55"W
L3	21.21	N53°22'05"W
L4	165.00	N08°22'05"W
L5	129.00	N81°37'55"E
L6	15.90	N08°22'05"W
L7	70.00	N81°37'55"E
L8	90.00	N81°37'55"E
L9	120.00	N08°22'05"W
L10	49.17	N79°20'57"E
L11	99.33	N71°59'16"E
L12	99.31	N65°26'59"E
L13	48.85	N60°11'53"E
L14	122.25	N52°47'40"E

Line Table

Line #	Length	Direction
L15	114.32	N70°01'31"W
L16	68.17	S49°04'04"W
L17	82.76	S01°04'51"E
L18	54.24	S86°27'13"W
L19	59.54	N66°27'13"E
L20	24.88	N00°53'21"W
L21	22.72	S00°53'21"E
L22	61.65	S14°58'29"W
L23	37.64	S82°22'05"E
L24	86.22	S81°37'55"W
L25	33.22	S08°22'05"E
L26	33.22	N08°22'05"W
L27	68.17	S49°04'04"W

DATE: DECEMBER 2, 2022
 OWNER: RICK NEFF
 HUNT COMMUNITIES BASTROP, LLC.
 A DELAWARE LIMITED LIABILITY COMPANY
 P.O. BOX 12220
 EL PASO, TEXAS 79

