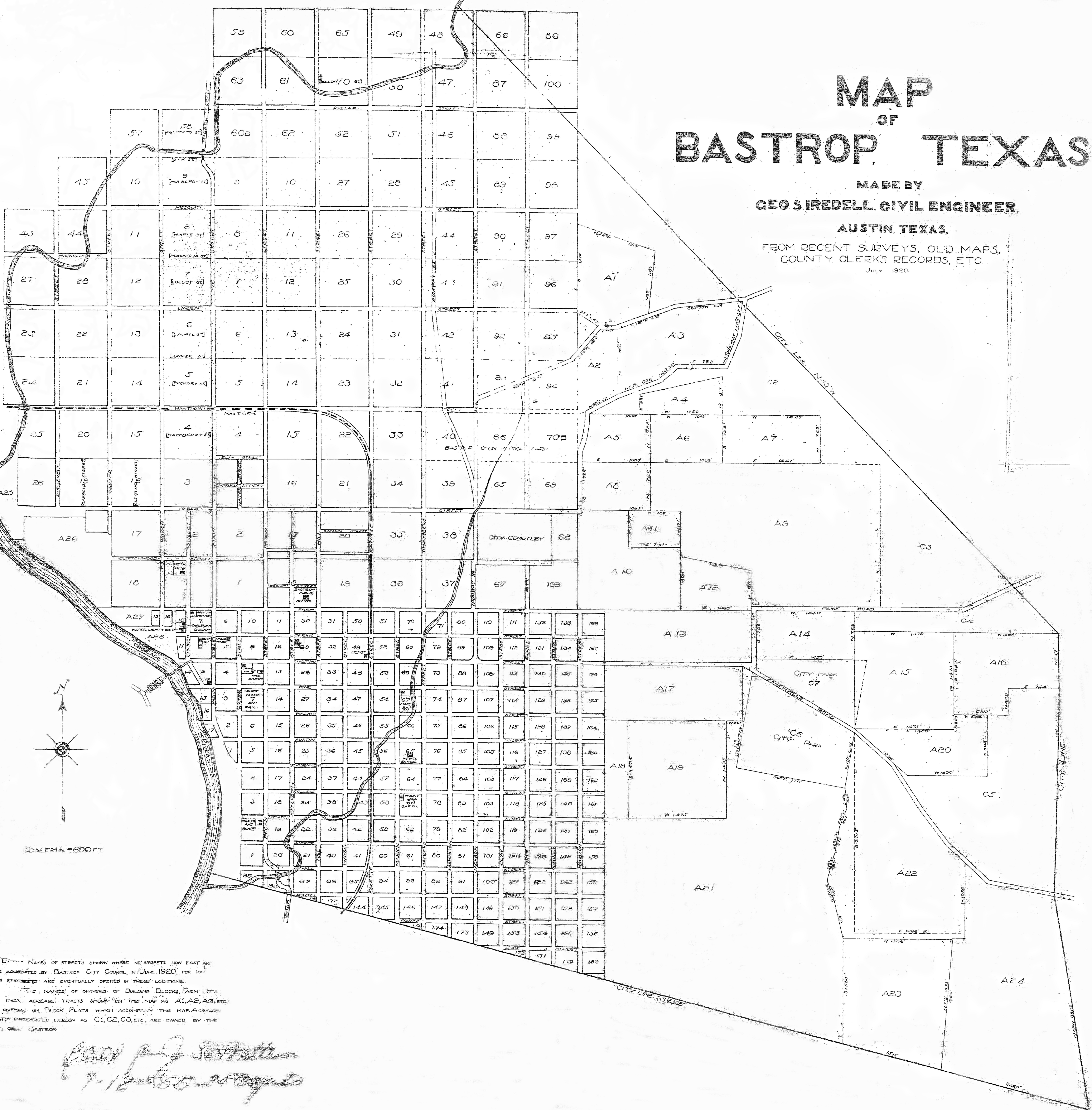


MAP OF BASTROP, TEXAS

MADE BY
C.E. SIREDELL, CIVIL ENGINEER,

AUSTIN, TEXAS,

FROM RECENT SURVEYS, OLD MAPS,
COUNTY CLERK'S RECORDS, ETC.
JULY 1920.



NOTE:— NAMES OF STREETS SHOWN WHERE NO STREETS NOW EXIST ARE THOSE ADVERTISED BY BASTROP CITY COUNCIL IN JUNE, 1920, FOR USE WHEN STREETS ARE EVENTUALLY OPENED IN THESE LOCATIONS.
THE NAMES OF OWNERS OF BUILDING BLOCKS, FARM LOTS AND OTHER ACRES ARE SHOWN ON THIS MAP AS A1, A2, A3, ETC. ARE GIVEN ON BLOCK PLATS WHICH ACCOMPANY THIS MAP. ACRES TRACTS INDICATED HEREON AS C1, C2, C3, ETC., ARE OWNED BY THE CITY OF BASTROP.

Handwritten signature and date:
C. E. SiredeLL
7-12-20