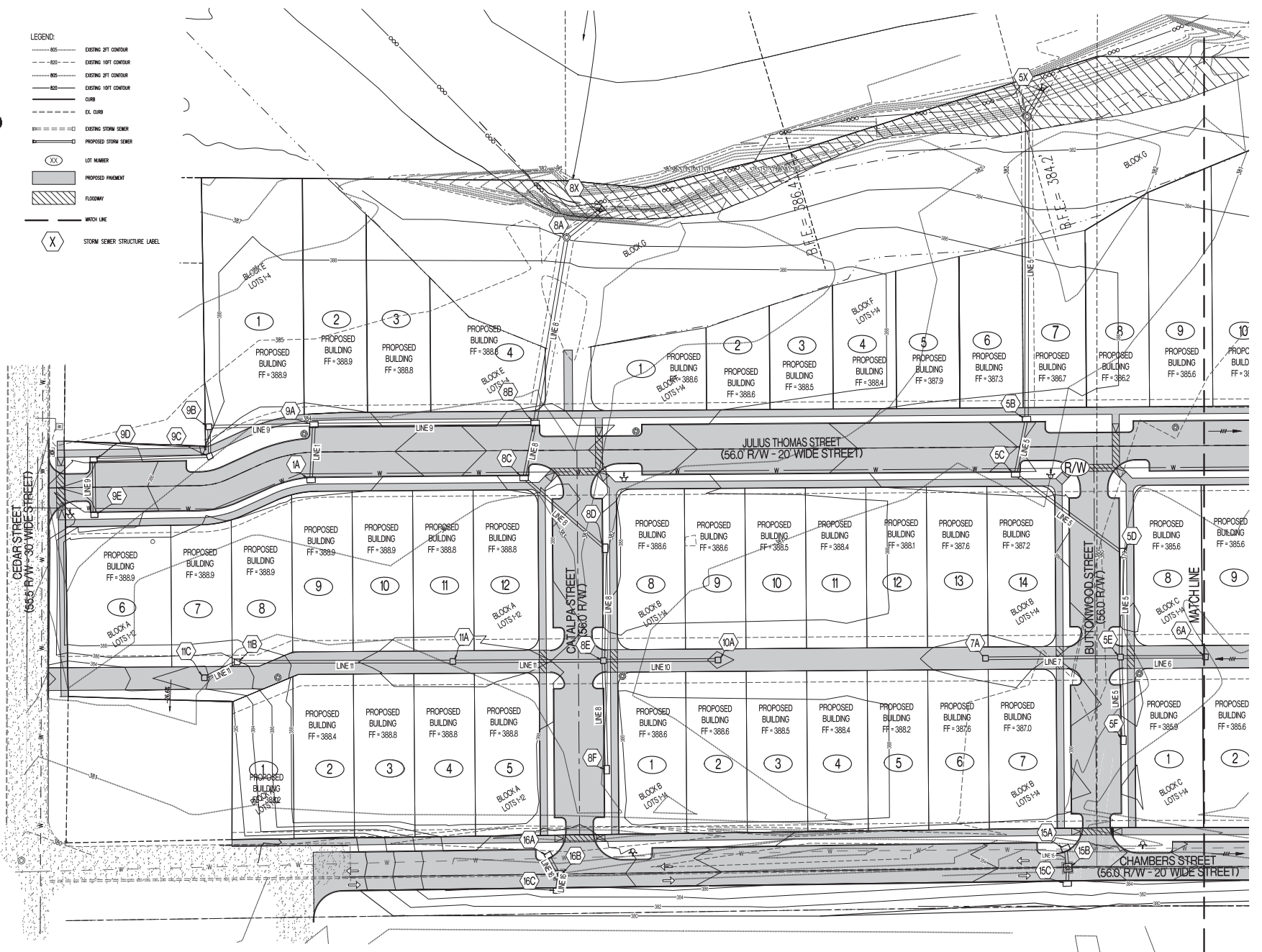
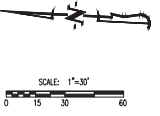
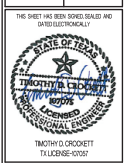


- LEGEND:**
- 85' --- EXISTING 21' CONTOUR
 - 80' --- EXISTING 10FT CONTOUR
 - 85' --- EXISTING 21' CONTOUR
 - 80' --- EXISTING 10FT CONTOUR
 - --- CURB
 - --- EX. CURB
 - --- EXISTING STORM SEWER
 - --- PROPOSED STORM SEWER
 - (XX) --- LOT NUMBER
 - --- PROPOSED PAVEMENT
 - --- FLOODWAY
 - --- MATCH LINE
 - (X) --- STORM SEWER STRUCTURE LABEL



REVISIONS:

NO.	DATE
ORIGINAL	08/29/2022



PREPARED BY:
CROCKETT
 ENGINEERS & ARCHITECTS
 1000 W. WILSON ST., SUITE 100
 DALLAS, TEXAS 75201
 www.crockett-engineers.com
 Copyright © 2022
 Crockett Engineers & Architects, L.L.C.
 License No. 00000001

DEVELOPER:
 FARM STREET VILLAGE LP
 5700 W. WILSON ST., SUITE 100
 OVERLAND PARK, KS 66204

FARM STREET VILLAGE

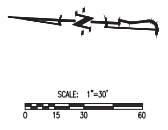
BASTROP, BASTROP COUNTY, TEXAS

DRAWING INCLUDES:
 STORM SEWER MAP
 SHEET 1 OF 2

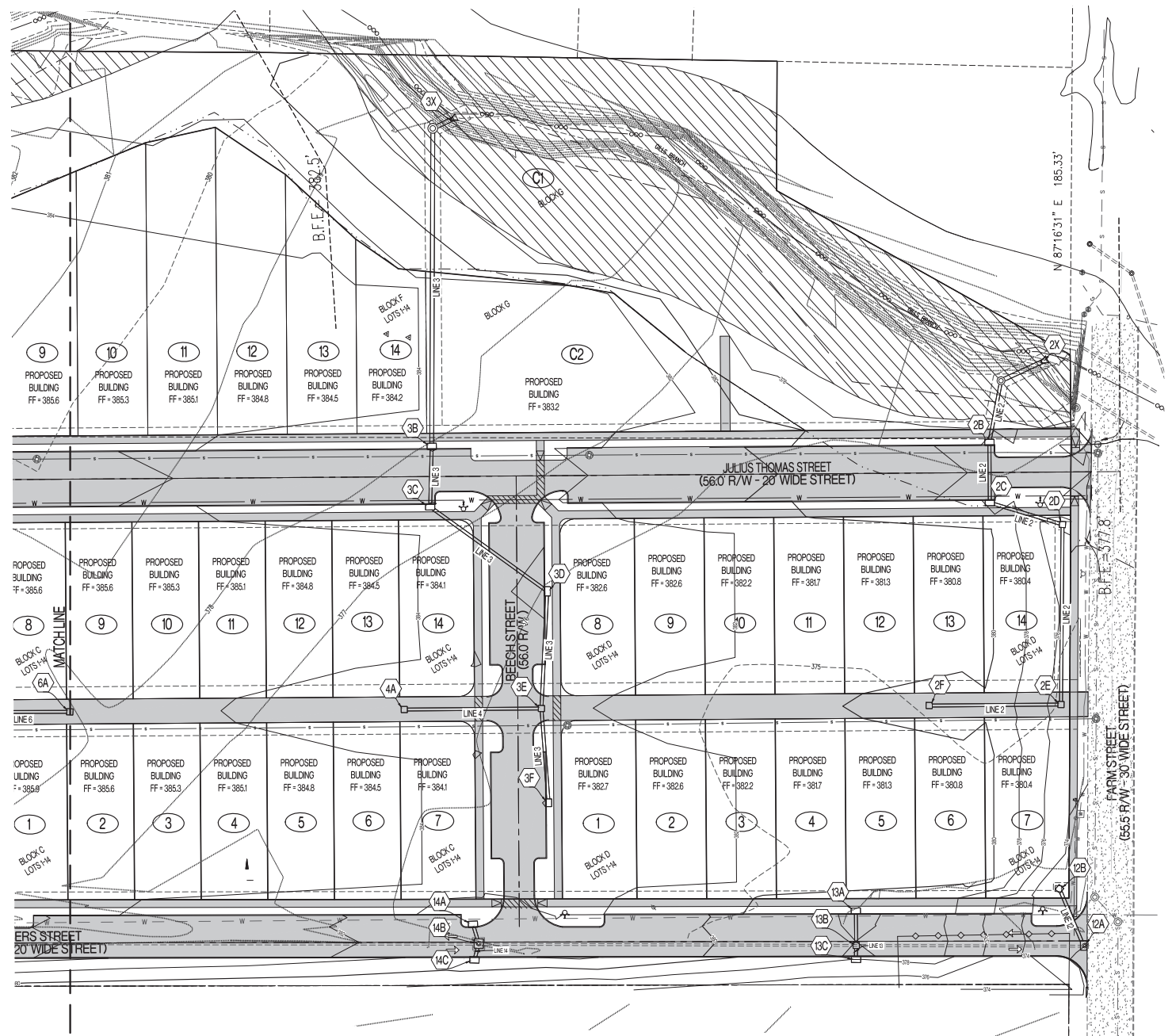
DESIGNED: KFM
 DRAWN: KFM
 PROJECT NO.: 202027
 SHEET: SS1

13/02/2022 10:09:17 - Bastrop, TX (City) (WAD) (Title) (Construction Plan) (202027) - Creating Drawing

\\3\2017\10297 - Bstrop - T\City\A\200 Files\Construction Plans\10297 - Grading Base.dwg

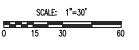
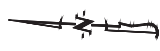


- LEGEND:**
- 805 --- EXISTING 2FT CONTOUR
 - 820 --- EXISTING 10FT CONTOUR
 - 805 --- EXISTING 2FT CONTOUR
 - 820 --- EXISTING 10FT CONTOUR
 - --- CURB
 - - - - EX. CURB
 - - - - EXISTING STORM SEWER
 - - - - PROPOSED STORM SEWER
 - (XX) LOT NUMBER
 - ▨ PROPOSED PAVEMENT
 - ▨ FLOODWAY
 - WITH LINE
 - (X) STORM SEWER STRUCTURE LABEL

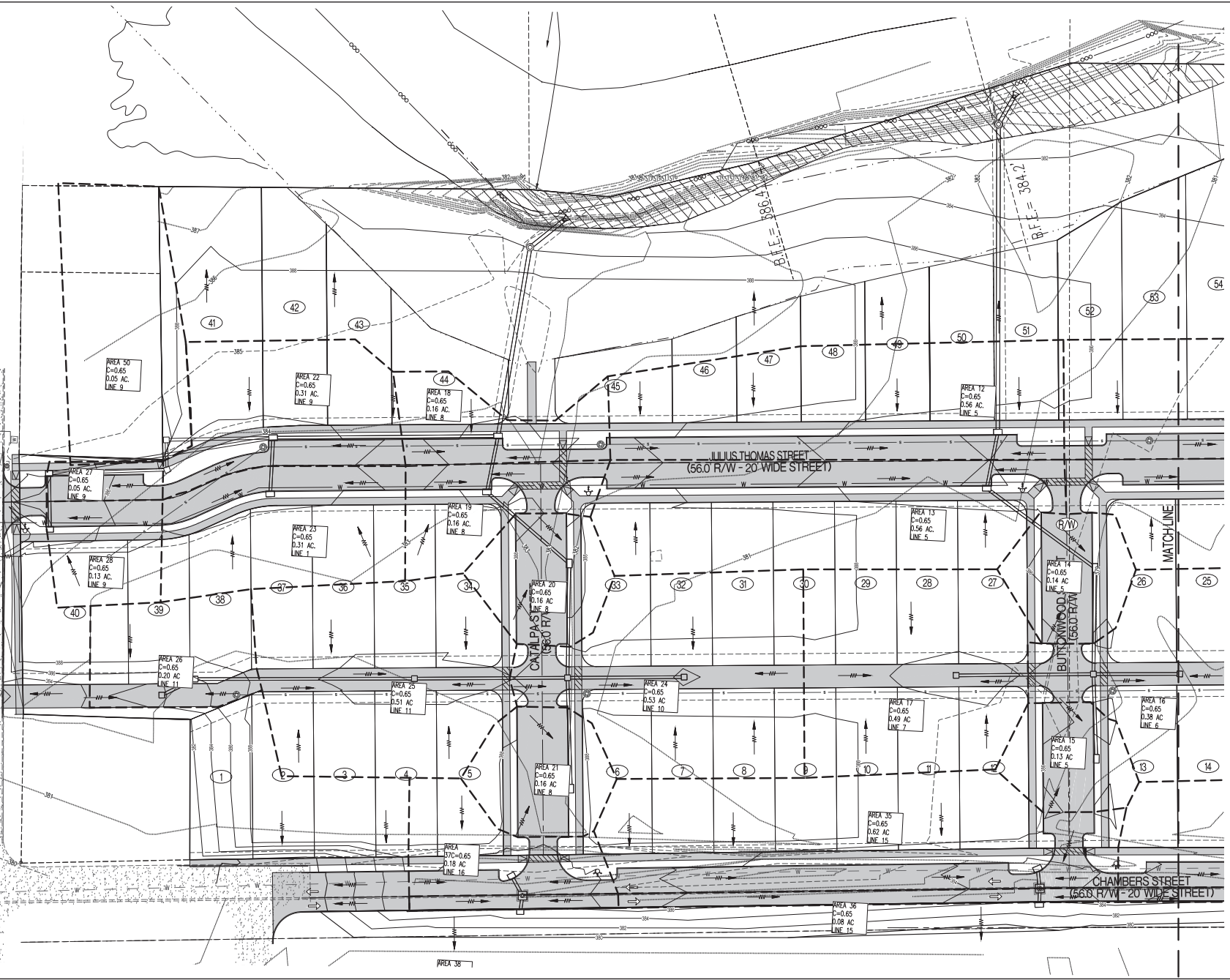


REVISIONS:	
NO.	DATE
ORIGINAL	08/29/2007
THE SHEET HAS BEEN REVISIONED AND DATED ELECTRONICALLY	
PREPARED BY: CROCKETT ENGINEERS & ARCHITECTS 1000 W. WILSON ST., SUITE 1000 DALLAS, TEXAS 75201 www.crockett-engineers.com Copyright © 2007 by Timothy Crockett & Associates, L.L.C. License No. 1000000001	
DEVELOPER: FARM STREET VILLAGE LP 10700 W. WILSON ST., SUITE 1000 OVERLAND PARK, KS 66204	
<h1>FARM STREET VILLAGE</h1> <h2>BASTROP, BASTROP COUNTY, TEXAS</h2>	
DRAWING INCLUDES:	
STORM SEWER MAP SHEET 1 OF 2	
DESIGNED:	KRM
DRAWN:	KRM
PROJECT NO.:	200297
SHEET:	SS 2

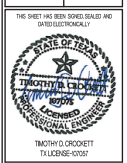
\\3201710297 - Basting - T:\CADD\2020\Drawings\Construction Plans\10297 - Grading Base.dwg



- LEGEND:**
- 805 --- EXISTING DTI CONTOUR
 - 820 --- EXISTING LFT CONTOUR
 - 850 --- EXISTING DTI CONTOUR
 - 870 --- EXISTING LFT CONTOUR
 - 880 --- CURB
 - 890 --- EX. CURB
 - 900 --- EXISTING STORM SEWER
 - 910 --- PROPOSED STORM SEWER
 - (XX) LOT NUMBER
 - ▨ PROPOSED PAVEMENT
 - ▨ FLOODWAY
 - W --- W/CH LINE
 - D --- DRAINAGE AREA BOUNDARY
 - W --- STORMWATER RUNOFF FLOW DIRECTION



REVISIONS:	
NO.	DATE
ORIGINAL	08/29/2020



PREPARED BY:
CROCKETT
ENGINEERS ARCHITECTS
1000 W. WILSON ST., SUITE 200
DALLAS, TEXAS 75201
www.crockett-engineers.com
Copyright © 2020 by Crockett Engineers, Architects, PLLC
All Rights Reserved

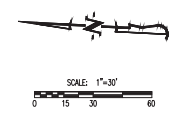
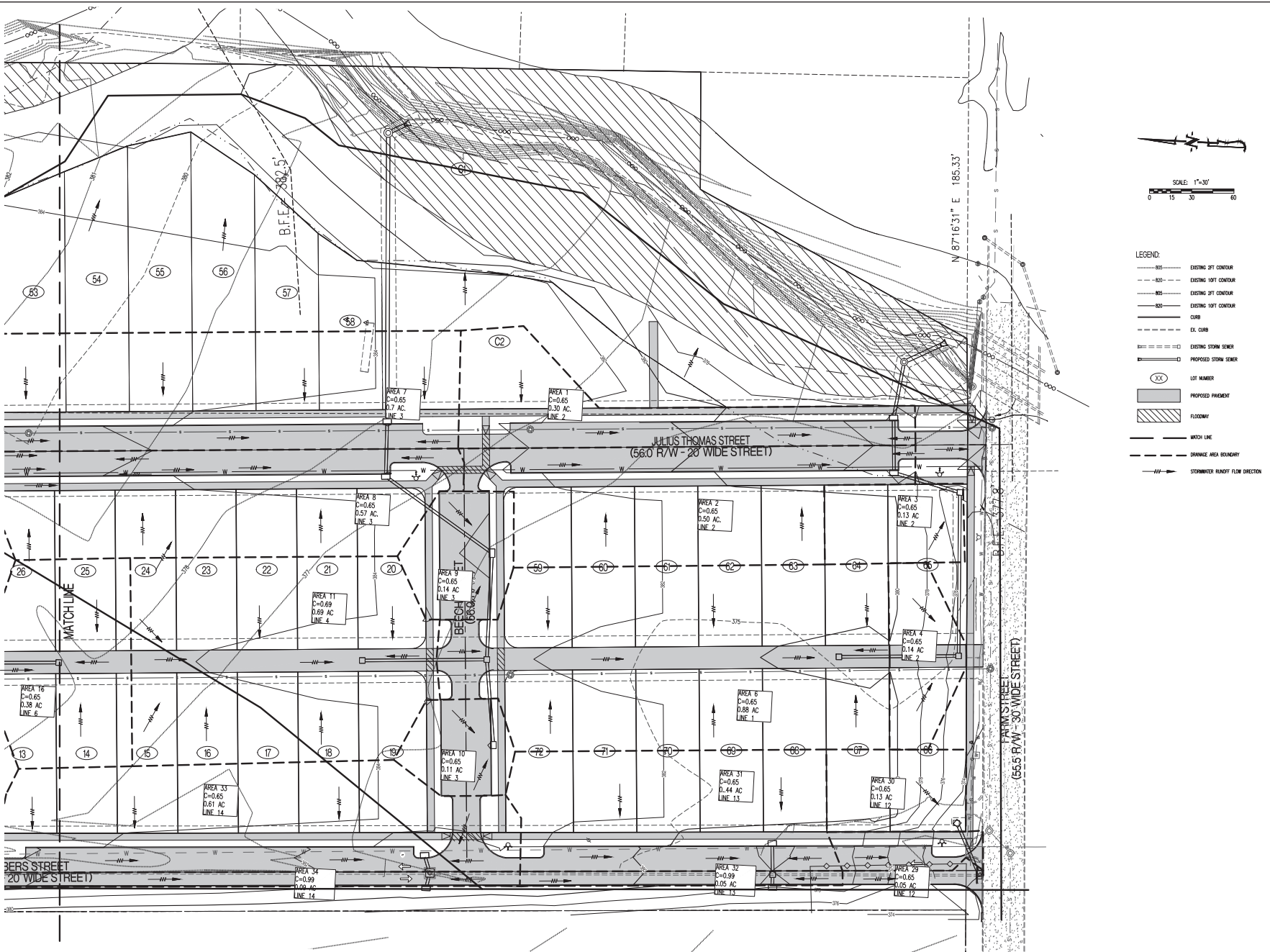
DEVELOPER:
FARM STREET VILLAGE LP
10700 WILSON ST., SUITE 200
DALLAS, TEXAS 75201

FARM STREET VILLAGE

BASTROP, BASTROP COUNTY, TEXAS

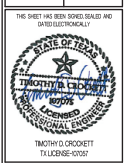
DRAWING INCLUDES:
DRAINAGE AREA MAP
SHEET 1 OF 2

DESIGNED: KFM
DRAWN: KFM
PROJECT NO.: 202027
SHEET: DA1



- LEGEND:
- 805 --- EXISTING 20' CONTOUR
 - 820 --- EXISTING 10' CONTOUR
 - 805 --- EXISTING 20' CONTOUR
 - 820 --- EXISTING 10' CONTOUR
 - CURB --- CURB
 - EX. CURB --- EX. CURB
 - EXISTING STORM SEWER --- EXISTING STORM SEWER
 - PROPOSED STORM SEWER --- PROPOSED STORM SEWER
 - LOT NUMBER --- LOT NUMBER
 - PROPOSED PAVEMENT --- PROPOSED PAVEMENT
 - FLOODWAY --- FLOODWAY
 - MATCH LINE --- MATCH LINE
 - DRAINAGE AREA BOUNDARY --- DRAINAGE AREA BOUNDARY
 - STORMWATER RUNOFF FLOW DIRECTION --- STORMWATER RUNOFF FLOW DIRECTION

NO.	DATE
ORIGINAL	08/29/2022



PREPARED BY:
CROCKETT
 ENGINEERS ARCHITECTS
 1000 W. WILSON ST., SUITE 100
 DALLAS, TEXAS 75203
 www.crockett-engineers.com
 Copyright © 2022 by Crockett Engineers, Architects, PLLC
 All Rights Reserved.

DEVELOPER:
 FARM STREET VILLAGE, L.P.
 5700 FARM STREET, SUITE 100
 OVERLAND PARK, KS 66204

FARM STREET VILLAGE

BASTROP, BASTROP COUNTY, TEXAS

DRAWING INCLUDES:
 DRAINAGE
 AREA MAP
 SHEET 2 OF 2

DESIGNED: KPM
 DRAWN: KPM
 PROJECT NO.: 202097
 SHEET:
 DA 2

13/2021/102097 - Bastrop, TX (City) (CAD File) (Construction Plans) (2022) - Grading & Drainage