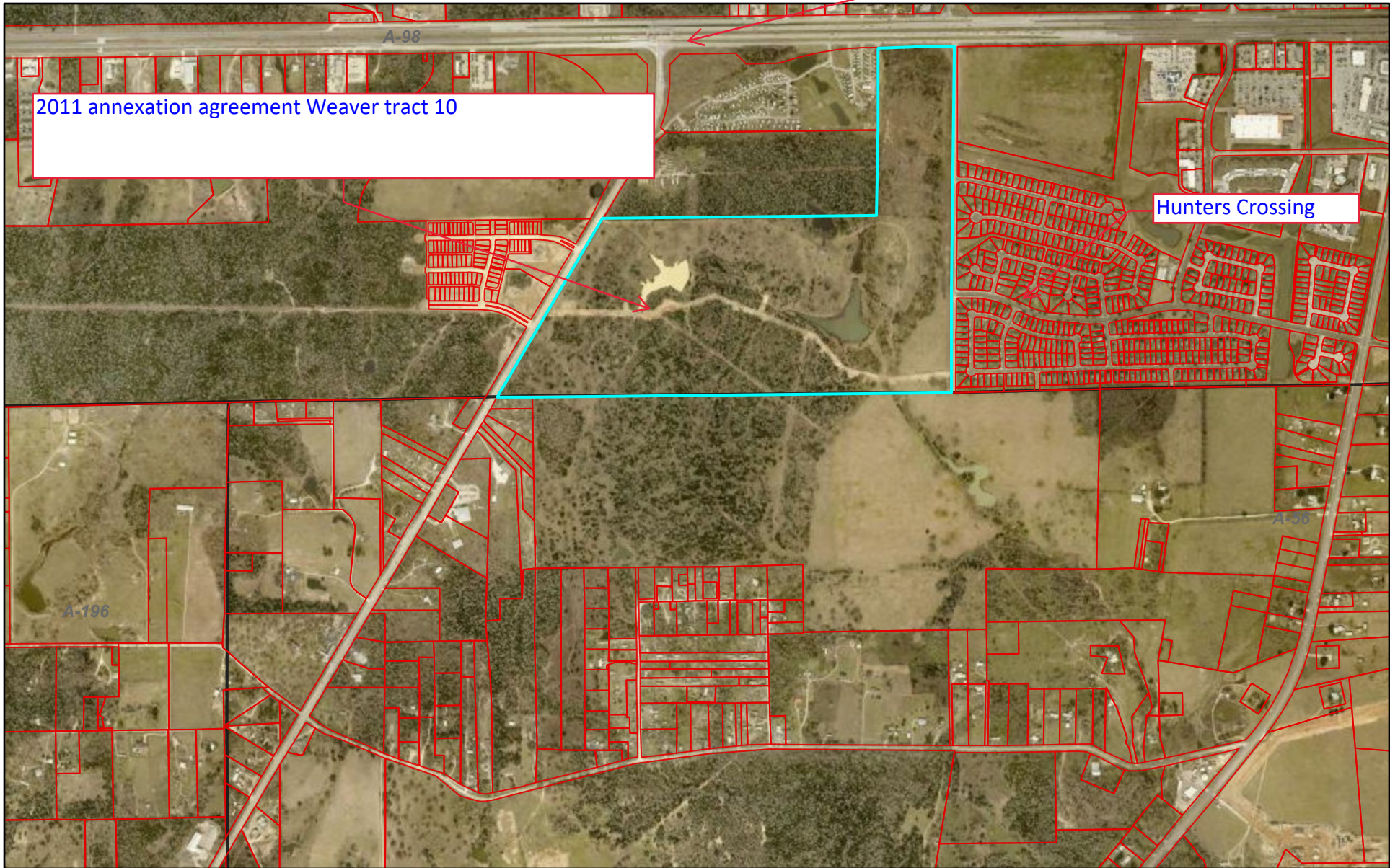




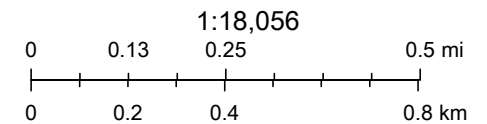
Bastrop CAD Web Map

SH 71



8/3/2023, 1:24:08 PM

-  Abstracts
-  Parcels



© OpenStreetMap (and) contributors, CC-BY-SA

Bastrop County Appraisal District, BIS Consulting - www.bisconsulting.com

Disclaimer: This product is for informational purposes only and has not been prepared for or be suitable for legal, engineering, or surveying purposes. It does not represent an on-the-ground survey and represents only the approximate relative location of boundaries.