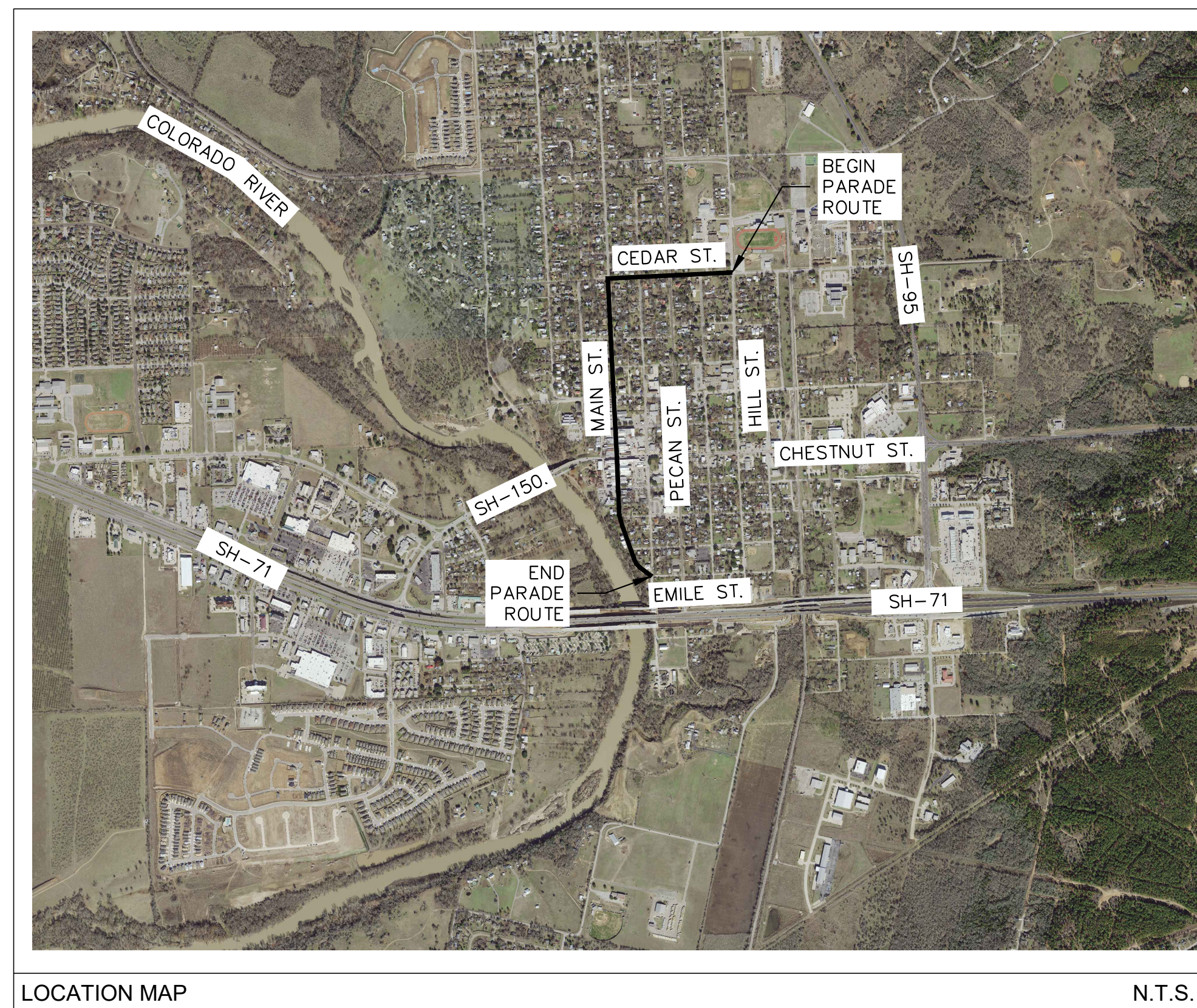


# CITY OF BASTROP SPECIAL EVENT SMALL PARADE ROUTE TEMPORARY TRAFFIC CONTROL PLANS



	<p style="font-size: small;">305 East Huntland Drive Suite 200 Austin, Texas 78752 p: 512.453.0767 f: 512.453.1734</p> <p style="font-size: x-small;">TBAE FIRM REGISTRATION NO.: 1452 TBPE FIRM REGISTRATION NO.: F-1416 TBPLS FIRM REGISTRATION NO.: 10065600</p>	<table border="1" style="width: 100%; border-collapse: collapse;"> <thead> <tr> <th style="width: 10%;">NO.</th> <th style="width: 10%;">DATE</th> <th style="width: 70%;">DESCRIPTION</th> <th style="width: 10%;">BY</th> </tr> </thead> <tbody> <tr><td> </td><td> </td><td> </td><td> </td></tr> <tr><td> </td><td> </td><td> </td><td> </td></tr> <tr><td> </td><td> </td><td> </td><td> </td></tr> <tr><td> </td><td> </td><td> </td><td> </td></tr> <tr><td> </td><td> </td><td> </td><td> </td></tr> <tr><td> </td><td> </td><td> </td><td> </td></tr> <tr><td> </td><td> </td><td> </td><td> </td></tr> <tr><td> </td><td> </td><td> </td><td> </td></tr> <tr><td> </td><td> </td><td> </td><td> </td></tr> <tr><td> </td><td> </td><td> </td><td> </td></tr> </tbody> </table>	NO.	DATE	DESCRIPTION	BY																																									<p style="font-size: x-small;">The bar above measures one inch on the original drawing. Adjust scales accordingly.</p>	<p><b>TEMPORARY TRAFFIC CONTROL PLAN COVER SHEET</b></p> <p><b>BASTROP SPECIAL EVENT/PARADE ROUTE CITY OF BASTROP, TX</b></p>	<p style="font-size: x-small;">PLOTTED: 11/01/2022 JOB NO: 345-05B</p> <p style="font-size: x-small;">TC-00 <u>1</u> OF <u>6</u></p>
NO.	DATE	DESCRIPTION	BY																																														

**RIGHT OF WAY MANAGEMENT STANDARD NOTES**

- Contractor shall have an approved right-of-way (ROW) permit and traffic control plan (TCP) in electronic or paper format on site at all times when working in the ROW.
- Contractor shall provide advanced notification per the latest Transportation Criteria Manual (TCM) Section 8.4.0 - Work Zones:
  - 311 must be notified a minimum of three (3) days prior to any planned closures, including any sidewalk, bike lanes, and alleys
  - Any Portable Changeable Message Signs (PCMS) must be setup at least two (2) weeks prior to the closure
  - Construction notices, door-hangers and/or mailings must be provided at least two (2) weeks prior to commencement of work
  - Closures of any existing driveways must be avoided. When access cannot be maintained, a minimum 7 days of advanced notification to the property owner is required, and 14 days advanced notification for Emergency Service Facilities (such as fire stations, hospitals, and police stations) along with the approval from the ROW Division of ATD.
- Unless otherwise approved by the ROW Division of Austin Transportation Department (ATD):
  - Only one phase of a TCP may be set at any one time
  - Initial setups and phase changes should not extend into hours where work activities are prohibited
  - Long-term setups should occur during low-volume traffic hours, such as weekends
  - Double lane closures in the DAPCZ are prohibited Monday through Friday
  - Full closures are generally prohibited Monday through Friday
- Once traffic control has been set, the authorized and competent representative from the project team/barricade company will complete and upload the "Contractor's Self-Inspection Checklist" form. See form and detailed instructions here: <https://www.austintexas.gov/page/right-way-traffic-control>.
- If police officers employed by agencies other than the City of Austin will be used to assist in directing traffic, the applicant must notify APDSpecialEvents@austintexas.gov at least three (3) days prior to work with the name(s) and agency of the police officers to be employed, along with the date, time, and location where the officer(s) will be working.
- Excavations shall be backfilled or plated when required to open to traffic. Temporary paving shall be done according to City of Austin (COA) Standard Detail 1100S-4 (for HMAC or PCC pavements). For excavations exceeding a transverse width of 5 feet, the contractor shall provide an engineered plating plan for review to Public Work's Office of the City Engineer at their email address PWDOCEReviewDL@austintexas.gov.
- Pedestrian routes in and around the work zone, including construction entrances, temporary walking paths, bypasses, covered walkways, and detours throughout the project, must remain accessible and shall include accessibility features consistent with the features present in the existing pedestrian facility. Sidewalks should not be closed for periods of more than 14 days, unless otherwise approved by the ROW Division of ATD.
- All applicable safeguards shall be in place per Chapter 33 of the International Building Code, which includes pedestrian protections per Section 3306.
- "Construction Entrance Ahead" signs must be placed at all approaches to construction entrances, unless otherwise shown on the reviewed TCP.
- All traffic control devices including protective barriers must be crashworthy and installed according to the manufacturer's guidelines. Crashworthiness shall be determined per American Association of State Highway and Transportation Officials' (AASHTO) Manual for Assessing Safety Hardware (MASH) testing requirements.
- Overnight protection of work zones and storage of material/equipment shall be according to COA Standard Detail 804S-4.
- The name of the barricade contractor shall be shown on the non-reflective surface of all traffic control devices in accordance with COA Standard Detail 804S-5.
- The City's traffic engineer or inspector may make or require field adjustments to address issues of safety and mobility. Additionally, any traffic control deficiencies must also be addressed per the timeline provided by the ROW Division of ATD. Violations will be subject to penalties as provided by law.
- If existing Capital Metro bus stops are within the temporary traffic control or detour area, the contractor shall contact Capital Metro at [service.impacts@capmetro.org](mailto:service.impacts@capmetro.org), two (2) weeks prior to setting up the traffic control devices in order to coordinate potential bus-stop relocation or any other related issues.
- If existing signalized intersections are within the temporary traffic control area, the contractor shall contact ATD - Signals Division at (512) 974-4075, two (2) weeks prior to setting up any traffic control devices and/or any phase changes.
- The right of way shall be returned to full use at the end of the approved work hours.
- Contractors shall adhere to all ROW special event activity restrictions, as per the latest Mobility Guidelines (MG-08). Projects that are routed through the DAPCZ process are required to coordinate with the Office of Special Events (512-974-1000 or [TransportationSpecialEvents@austintexas.gov](mailto:TransportationSpecialEvents@austintexas.gov)), in conjunction with the ROW Division of ATD. Visit City Stage for scheduled events for all of Austin.
- Pursuant to City Code 9-2-3, ROW work must not make noise audible to an adjacent business or residence between 10:30pm and 7:00am or operate a machine that separates, gathers, grades, loads, or unloads sand, rock, or gravel within 600 feet of a residence, church, hospital, hotel, or motel between 7:00pm and 6:00am, except for installation of concrete authorized by a separate non-peak hour concrete pour permit issued under City Code section 9-2-21.
- All long-term work zones shall have all conflicting markings removed or obliterated, and the appropriate temporary markings installed per 804S-3. Black paint or spraying with asphalt over pavement markings is not considered an acceptable method of removal or obliteration. Removal techniques that minimize and avoid any pavement scarring must be considered.

Revised 9/1/2022

**STREETS**

CLASSIFICATION	STREET	FROM STREET	TO STREET	PLANNED IMPROVEMENTS	TRAFFIC CONTROL DETAIL; PLAN SHEET	*ALLOWED BARRICADING TIMES*	DURATION	COMMENTS
COLLECTOR	HILL STREET	EMILE STREET	CEDAR STREET	PARADE ROUTE	TCP-02	9 a.m.-9 p.m. M-F 7 a.m. - 9 p.m. WEEKENDS	1-DAY	SET UP THROUGH CITY DEPARTMENTS
COLLECTOR	CEDAR STREET	HILL STREET	MAIN STREET	PARADE ROUTE	TCP-02	9 a.m.-9 p.m. M-F 7 a.m. - 9 p.m. WEEKENDS	1-DAY	SET UP THROUGH CITY DEPARTMENTS
COLLECTOR	MAIN STREET	CEDAR STREET	EMILE STREET	PARADE ROUTE	TCP-02	9 a.m.-9 p.m. M-F 7 a.m. - 9 p.m. WEEKENDS	1-DAY	SET UP THROUGH CITY DEPARTMENTS
COLLECTOR	EMILE STREET	MAIN STREET	HILL STREET	PARADE ROUTE	TCP-02	9 a.m.-9 p.m. M-F 7 a.m. - 9 p.m. WEEKENDS	1-DAY	SET UP THROUGH CITY DEPARTMENTS

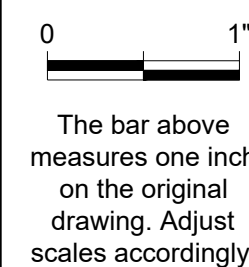
**INTERSECTIONS**

CLASSIFICATION	PROTECTION	STREET INTERSECTION	PLANNED IMPROVEMENTS	TRAFFIC CONTROL DETAIL; PLAN SHEET	*ALLOWED BARRICADING TIMES*	DURATION	COMMENTS
COLLECTOR	NOT PROTECTED	HILL STREET AND CEDAR STREET	PARADE ROUTE	TCP-02	9 a.m.-9 p.m. M-F 7 a.m. - 9 p.m. WEEKENDS	1-DAY	SET UP THROUGH CITY DEPARTMENTS
COLLECTOR	NOT PROTECTED	HILL STREET AND BUTTWOOD STREET	PARADE ROUTE	TCP-02	9 a.m.-9 p.m. M-F 7 a.m. - 9 p.m. WEEKENDS	1-DAY	SET UP THROUGH CITY DEPARTMENTS
COLLECTOR	NOT PROTECTED	HILL STREET AND BEECH STREET	PARADE ROUTE	TCP-02	9 a.m.-9 p.m. M-F 7 a.m. - 9 p.m. WEEKENDS	1-DAY	SET UP THROUGH CITY DEPARTMENTS
COLLECTOR	NOT PROTECTED	HILL STREET AND FARM STREET	PARADE ROUTE	TCP-02	9 a.m.-9 p.m. M-F 7 a.m. - 9 p.m. WEEKENDS	1-DAY	SET UP THROUGH CITY DEPARTMENTS
COLLECTOR	NOT PROTECTED	HILL STREET AND SPRING STREET	PARADE ROUTE	TCP-02	9 a.m.-9 p.m. M-F 7 a.m. - 9 p.m. WEEKENDS	1-DAY	SET UP THROUGH CITY DEPARTMENTS
COLLECTOR	NOT PROTECTED	HILL STREET AND CHESTNUT STREET	PARADE ROUTE	TCP-02	9 a.m.-9 p.m. M-F 7 a.m. - 9 p.m. WEEKENDS	1-DAY	SET UP THROUGH CITY DEPARTMENTS
COLLECTOR	NOT PROTECTED	HILL STREET AND PINE STREET	PARADE ROUTE	TCP-02	9 a.m.-9 p.m. M-F 7 a.m. - 9 p.m. WEEKENDS	1-DAY	SET UP THROUGH CITY DEPARTMENTS
COLLECTOR	NOT PROTECTED	HILL STREET AND WALNUT STREET	PARADE ROUTE	TCP-02	9 a.m.-9 p.m. M-F 7 a.m. - 9 p.m. WEEKENDS	1-DAY	SET UP THROUGH CITY DEPARTMENTS
COLLECTOR	NOT PROTECTED	HILL STREET AND AUSTIN STREET	PARADE ROUTE	TCP-02	9 a.m.-9 p.m. M-F 7 a.m. - 9 p.m. WEEKENDS	1-DAY	SET UP THROUGH CITY DEPARTMENTS
COLLECTOR	NOT PROTECTED	MAIN STREET AND CEDAR STREET	PARADE ROUTE	TCP-02	9 a.m.-9 p.m. M-F 7 a.m. - 9 p.m. WEEKENDS	1-DAY	SET UP THROUGH CITY DEPARTMENTS
COLLECTOR	NOT PROTECTED	MAIN STREET AND BUTTWOOD STREET	PARADE ROUTE	TCP-02	9 a.m.-9 p.m. M-F 7 a.m. - 9 p.m. WEEKENDS	1-DAY	SET UP THROUGH CITY DEPARTMENTS
COLLECTOR	NOT PROTECTED	MAIN STREET AND BEECH STREET	PARADE ROUTE	TCP-02	9 a.m.-9 p.m. M-F 7 a.m. - 9 p.m. WEEKENDS	1-DAY	SET UP THROUGH CITY DEPARTMENTS
COLLECTOR	NOT PROTECTED	MAIN STREET AND FARM STREET	PARADE ROUTE	TCP-02	9 a.m.-9 p.m. M-F 7 a.m. - 9 p.m. WEEKENDS	1-DAY	SET UP THROUGH CITY DEPARTMENTS
COLLECTOR	NOT PROTECTED	MAIN STREET AND SPRING STREET	PARADE ROUTE	TCP-02	9 a.m.-9 p.m. M-F 7 a.m. - 9 p.m. WEEKENDS	1-DAY	SET UP THROUGH CITY DEPARTMENTS
COLLECTOR	NOT PROTECTED	MAIN STREET AND CHESTNUT STREET	PARADE ROUTE	TCP-02	9 a.m.-9 p.m. M-F 7 a.m. - 9 p.m. WEEKENDS	1-DAY	SET UP THROUGH CITY DEPARTMENTS
COLLECTOR	NOT PROTECTED	MAIN STREET AND PINE STREET	PARADE ROUTE	TCP-02	9 a.m.-9 p.m. M-F 7 a.m. - 9 p.m. WEEKENDS	1-DAY	SET UP THROUGH CITY DEPARTMENTS
COLLECTOR	NOT PROTECTED	MAIN STREET AND WALNUT STREET	PARADE ROUTE	TCP-02	9 a.m.-9 p.m. M-F 7 a.m. - 9 p.m. WEEKENDS	1-DAY	SET UP THROUGH CITY DEPARTMENTS
COLLECTOR	NOT PROTECTED	MAIN STREET AND AUSTIN STREET	PARADE ROUTE	TCP-02	9 a.m.-9 p.m. M-F 7 a.m. - 9 p.m. WEEKENDS	1-DAY	SET UP THROUGH CITY DEPARTMENTS
COLLECTOR	NOT PROTECTED	CEDAR STREET AND WATER STREET	PARADE ROUTE	TCP-02	9 a.m.-9 p.m. M-F 7 a.m. - 9 p.m. WEEKENDS	1-DAY	SET UP THROUGH CITY DEPARTMENTS
COLLECTOR	NOT PROTECTED	HILL STREET AND PECAN STREET	PARADE ROUTE	TCP-02	9 a.m.-9 p.m. M-F 7 a.m. - 9 p.m. WEEKENDS	1-DAY	SET UP THROUGH CITY DEPARTMENTS
COLLECTOR	NOT PROTECTED	HILL STREET AND JEFFERSON STREET	PARADE ROUTE	TCP-02	9 a.m.-9 p.m. M-F 7 a.m. - 9 p.m. WEEKENDS	1-DAY	SET UP THROUGH CITY DEPARTMENTS
COLLECTOR	NOT PROTECTED	EMILE STREET AND WATER STREET	PARADE ROUTE	TCP-02	9 a.m.-9 p.m. M-F 7 a.m. - 9 p.m. WEEKENDS	1-DAY	SET UP THROUGH CITY DEPARTMENTS
COLLECTOR	NOT PROTECTED	HILL STREET AND PECAN STREET	PARADE ROUTE	TCP-02	9 a.m.-9 p.m. M-F 7 a.m. - 9 p.m. WEEKENDS	1-DAY	SET UP THROUGH CITY DEPARTMENTS
COLLECTOR	NOT PROTECTED	EMILE STREET AND JEFFERSON STREET	PARADE ROUTE	TCP-02	9 a.m.-9 p.m. M-F 7 a.m. - 9 p.m. WEEKENDS	1-DAY	SET UP THROUGH CITY DEPARTMENTS
COLLECTOR	NOT PROTECTED	EMILE STREET AND BUTTWOOD STREET	PARADE ROUTE	TCP-02	9 a.m.-9 p.m. M-F 7 a.m. - 9 p.m. WEEKENDS	1-DAY	SET UP THROUGH CITY DEPARTMENTS

**STREETS - POSTED SPEEDS**

STREET NAME	POSTED SPEED (MPH)
MARTIN LUTHER KING DRIVE	30
FAYETTE STREET	25
HAYSEL STREET	25
HILL STREET	30
JEFFERSON STREET	25
PECAN STREET	30
WATER STREET	30
MAIN STREET	30
CHURCH STREET	30
WILSON STREET	30
ELM STREET	30
CYPRESS STREET	30
CEDAR STREET	30
BUTTWOOD STREET	25
BEECH STREET	30
FARM STREET	30
SPRING STREET	30
CHESTNUT STREET/LOOP 150	30
PINE STREET	30
WALNUT STREET	30
AUSTIN STREET	30
EMILE STREET	30
STATE HIGHWAY 71/21	65

NO.	DATE	DESCRIPTION	BY



**TEMPORARY TRAFFIC CONTROL PLAN  
NOTES AND BARRICADING SUMMARY TABLES**

**BASTROP SPECIAL SMALL EVENT/PARADE ROUTE  
CITY OF BASTROP, TX**

PLOTTED: 11/01/2022  
JOB NO: 345-05B

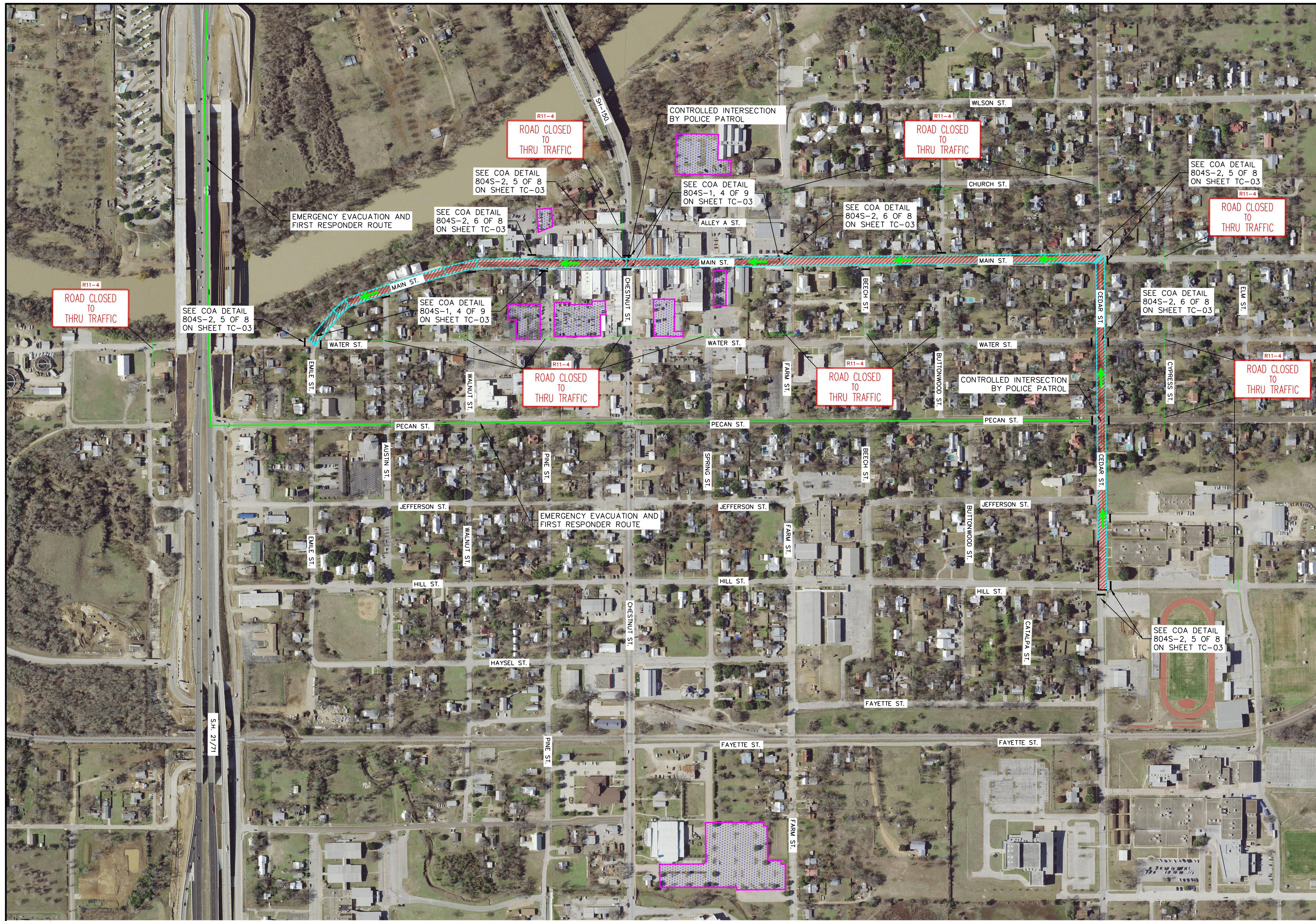
TC-01  
2 OF 6



305 East Huntland Drive  
Suite 200  
Austin, Texas 78752  
p: 512.453.0767  
f: 512.453.1734

TBAE FIRM REGISTRATION NO.: 1452  
TBPE FIRM REGISTRATION NO.: F-1416  
TBPLS FIRM REGISTRATION NO.: 10065600

File: Y:\Steve\City of Bastrop\CAAD\Sheets\TCP3-01\_NOTES.dwg



0 125' 250' 500'  
Scale: 1" = 250'

**TRAFFIC CONTROL LEGEND**

- PARKING AREAS
- WORK (PARADE ROUTE) AREA
- CHANNELIZING DEVICE (MARKERS)
- CHANNELIZING DEVICE (BARRELS)
- PMB PORTABLE PROGRAMMABLE MESSAGE BOARD
- TRAFFIC CONTROL SIGNAGE (TYPICAL)
- TYPE III BARRICADE
- DIRECTION OF PARADE TRAFFIC
- SIGN LOCATION

- NOTES:**
1. THIS PLAN IS FOR THE SETUP OF TRAFFIC CONTROLS NECESSARY TO FACILITATE A PARADE ROUTE/SPECIAL EVENT (HOMECOMING PARADE) ALONG THE HIGHLIGHTED PATH SHOWN.
  2. TEMPORARY TRAFFIC CONTROLS AND THE DETAILS REFERENCED IN THIS PLAN SHALL BE SET UP 24-HOURS BEFORE THE PARADE COMMENCES.
  3. THE ANTICIPATED DURATION FOR THE PARADE IS 1-DAY. THE TRAFFIC CONTROLS SHALL REMAIN IN PLACE UNTIL TEMPORARY PARKING FOR THE PARADE ROUTE AND THE PARADE FLOATS, VEHICLES, PROPS AND SPECIAL EVENT PERSONNEL HAVE BEEN SAFELY CLEARED FROM THE EVENT SITE.
  4. NO LESS THAN 2 POLICE PATROL UNITS SHALL BE LOCATED ON SITE (IN AREAS DESIGNATED), IN ORDER TO CONDUCT EMERGENCY VEHICULAR INGRESS OR EGRESS FOR VEHICLES NEEDING TO CROSS OVER THE PARADE ROUTE.
  5. PECAN STREET AND CHESTNUT STREET (SH-150) SHALL HAVE POLICE-ENFORCED AND CONTROLLED EMERGENCY ACCESS AT ALL TIMES DURING THE PARADE ACTIVITIES. FOR THIS EVENT, PECAN STREET PROVIDES THE MOST EFFICIENT ACCESS TO ASCENSION SETON BASTROP HOSPITAL, SHOULD EMERGENCY OR POTENTIALLY LIFE-THREATENING MEDICAL EMERGENCY SERVICES BE NEEDED DURING THE PARADE.
  6. ADA-COMPLIANT PATHWAYS TO ADDRESS PEDESTRIAN CONSIDERATIONS, SHALL BE ACCESSIBLE AT ALL TIMES DURING THE PARADE ACTIVITIES. AREAS WHERE SIDEWALK/CROSSWALK CLOSURES ARE NEEDED, SHALL EMPLOY DETAIL 804S-1, 4 OF 9 AS APPLICABLE.
  7. FOR TYPICAL SINGLE DIRECTION STREET DETOUR SETUPS, REFER TO DETAIL 804S-2, 5 OF 8.
  8. FOR TYPICAL BLOCK CLOSURE SETUPS WITH STREET DETOUR SETUPS IN BOTH DIRECTIONS, REFER TO DETAIL 804S-2, 6 OF 8.
  9. TO AVOID DUPLICATE SIGNAGE, THE CITY OF BASTROP MAY OMIT SIGNS IN THIS SETUP IF ALREADY IN PLACE BY EXISTING CONSTRUCTION SITES. CONVERSELY, EXISTING SIGNS THAT CONFLICT WITH THE TEMPORARY PARADE ROUTE SETUP MAY BE COVERED IF APPROPRIATE.

**mwm DesignGroup**

305 East Huntland Drive  
Suite 200  
Austin, Texas 78752  
p: 512.453.0767  
f: 512.453.1734

TBAE FIRM REGISTRATION NO.: 1452  
TBPE FIRM REGISTRATION NO.: F-1416  
TBPLS FIRM REGISTRATION NO.: 10065600

NO.	DATE	DESCRIPTION	BY

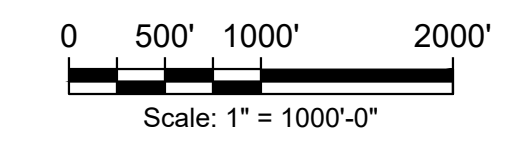
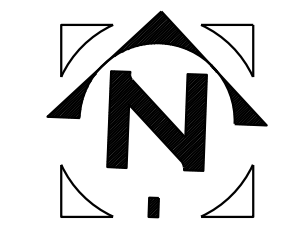
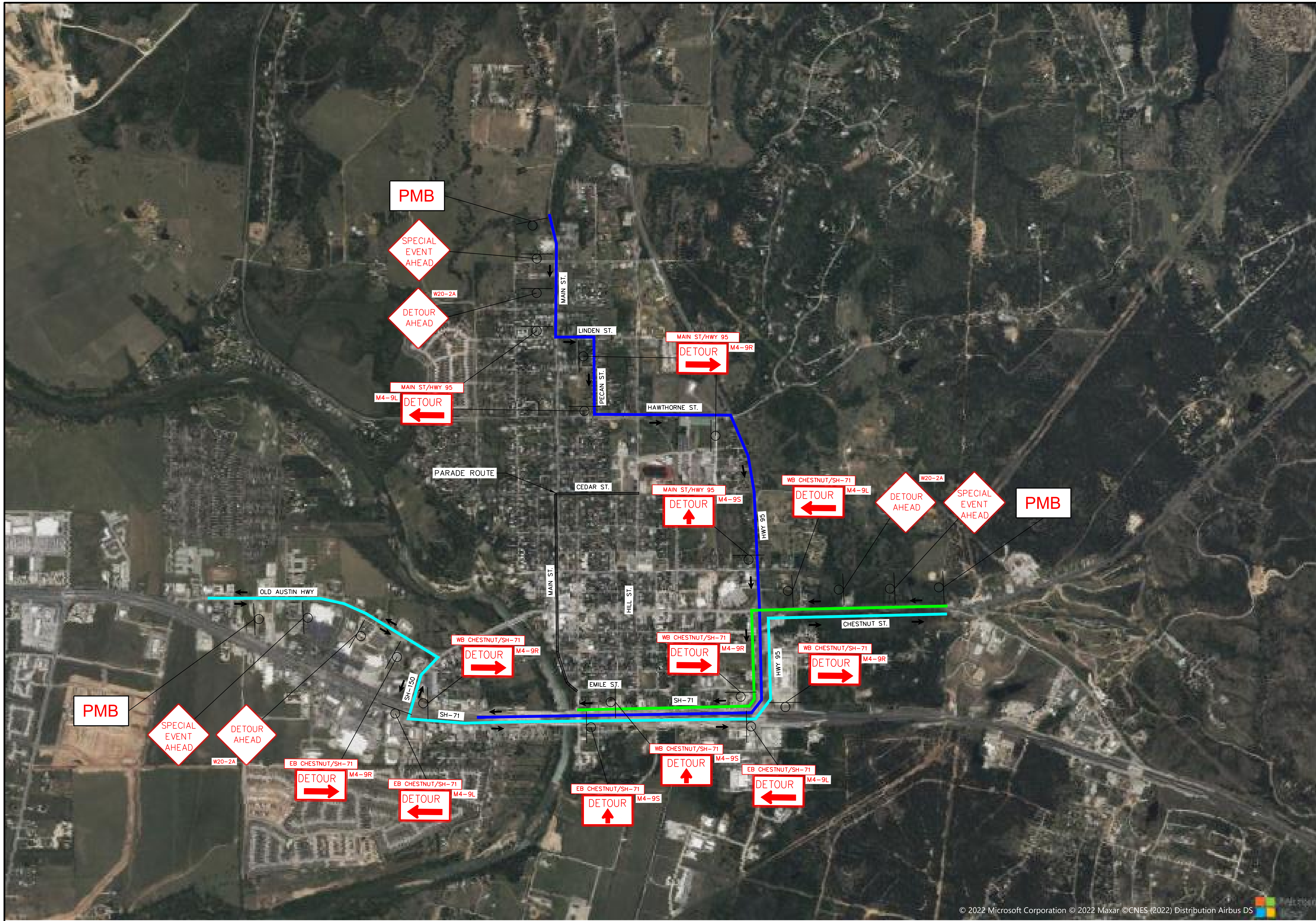
0 1"  
The bar above measures one inch on the original drawing. Adjust scales accordingly.









**TEMPORARY TRAFFIC CONTROL PLAN  
OVERALL LAYOUT**

**BASTROP SPECIAL SMALL EVENT/PARADE ROUTE  
CITY OF BASTROP, TX**

PLOTTED: 11/01/2022  
JOB NO: 345-05B

**TC-02**  
**3 OF 6**



- TRAFFIC CONTROL LEGEND**
-  WORK (PARADE ROUTE) AREA
  -  PORTABLE PROGRAMMABLE MESSAGE BOARD
  -  TRAFFIC CONTROL DETOUR SIGNAGE (TYPICAL)
  -  DIRECTION OF DETOUR
  -  SIGN LOCATION
  -  WESTBOUND CHESTNUT/SH-71 DETOUR
  -  MAIN STREET/HWY-95 DETOUR
  -  EASTBOUND CHESTNUT/SH-71 DETOUR

- NOTES:**
1. THIS PLAN IS FOR THE SETUP OF DETOURS NECESSARY TO DIRECT INCOMING, OUT-OF-TOWN TRAFFIC, AROUND THE HOMECOMING PARADE ROUTE USING THE DETOUR ROUTES SHOWN.
  2. TEMPORARY TRAFFIC CONTROLS AND THE SIGNS REFERENCED IN THIS PLAN SHALL BE SET UP 24 HOURS BEFORE THE PARADE COMMENCES.
  3. THE ANTICIPATED DURATION FOR THE PARADE IS 1-DAY. THE TRAFFIC CONTROLS SHALL REMAIN IN PLACE UNTIL TEMPORARY PARKING FOR THE PARADE ROUTE AND THE PARADE FLOATS, VEHICLES, PROPS AND PERSONNEL HAVE BEEN SAFELY CLEARED FROM THE PARADE SITE(S).
  4. PORTABLE MESSAGE BOARDS (PMB'S) SHALL BE USED TO CONVEY THE DATES AND TIMES FOR THE PARADE EVENT AT LEAST 2-WEEKS BEFORE THE EVENT.
  5. THE PMB'S SHALL BE PLACED WELL IN FRONT OF THE ADVANCED WARNING (SPECIAL EVENT & DETOUR) SIGNAGE FOR EACH OF THE THREE (3) APPROACHES SHOWN IN THE PLAN.
  6. PECAN STREET AND CHESTNUT STREET (SH-150) SHALL HAVE POLICE-ENFORCED AND CONTROLLED EMERGENCY ACCESS AT ALL TIMES DURING THE PARADE ACTIVITIES. FOR THIS EVENT, PECAN STREET PROVIDES THE MOST EFFICIENT ACCESS TO ASCENSION SETON BASTROP HOSPITAL, SHOULD EMERGENCY OR POTENTIALLY LIFE-THREATENING MEDICAL EMERGENCY SERVICES BE NEEDED DURING THE PARADE.
  7. TxDOT STANDARD SIGN DETAILS SHALL BE USED FOR SIGNAGE IN TxDOT-OWNED R.O.W.

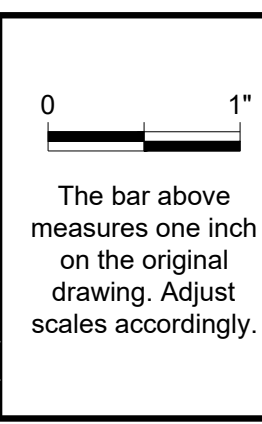
© 2022 Microsoft Corporation © 2022 Maxar ©CNES (2022) Distribution Airbus DS

**mwm DesignGroup**

305 East Huntland Drive  
Suite 200  
Austin, Texas 78752  
p: 512.453.0767  
f: 512.453.1734

TBAE FIRM REGISTRATION NO.: 1452  
TBPE FIRM REGISTRATION NO.: F-1416  
TBPLS FIRM REGISTRATION NO.: 10065600

NO.	DATE	DESCRIPTION	BY



**TEMPORARY TRAFFIC CONTROL PLANS  
DETOUR PLAN**

**BASTROP SPECIAL SMALL EVENT/PARADE ROUTE  
CITY OF BASTROP, TX**

PLOTTED: 11/01/2022  
JOB NO: 345-05B

TC-03  
4 OF 6

File: Y:\Steve\City of Bastrop\CAD\Sheets\TCP3--03\_DETOUR.dwg

**Typical Transition Lengths and Suggested Maximum Spacing of Devices**

Speed KMPH	Posted Speed MPH	Formula	Minimum Desirable Taper Lengths (L) Meters (Feet)	Suggested Max. Device Spacing Meters (Feet)	Suggested Sign Spacing Meters (Feet)
50	30	L=WS <sup>2</sup> 60	3.0(10) Offset Meters (feet)	3.6(12) Offset Meters (feet)	On a tangent Meters (feet)
55	35		45 (150)	50 (165)	9 (30)
65	40		65 (215)	70 (228)	15-20 (50-75)
70	45	L=WS <sup>2</sup>	80 (265)	100 (328)	25-30 (80-100)
80	50		100 (328)	110 (360)	30-35 (90-110)
90	55		135 (440)	150 (492)	40-45 (120-150)
95	60	L=WS <sup>2</sup>	150 (492)	165 (541)	45-55 (135-165)
105	65		180 (590)	200 (656)	50-60 (150-200)
115	70		215 (707)	235 (773)	60-70 (180-210)

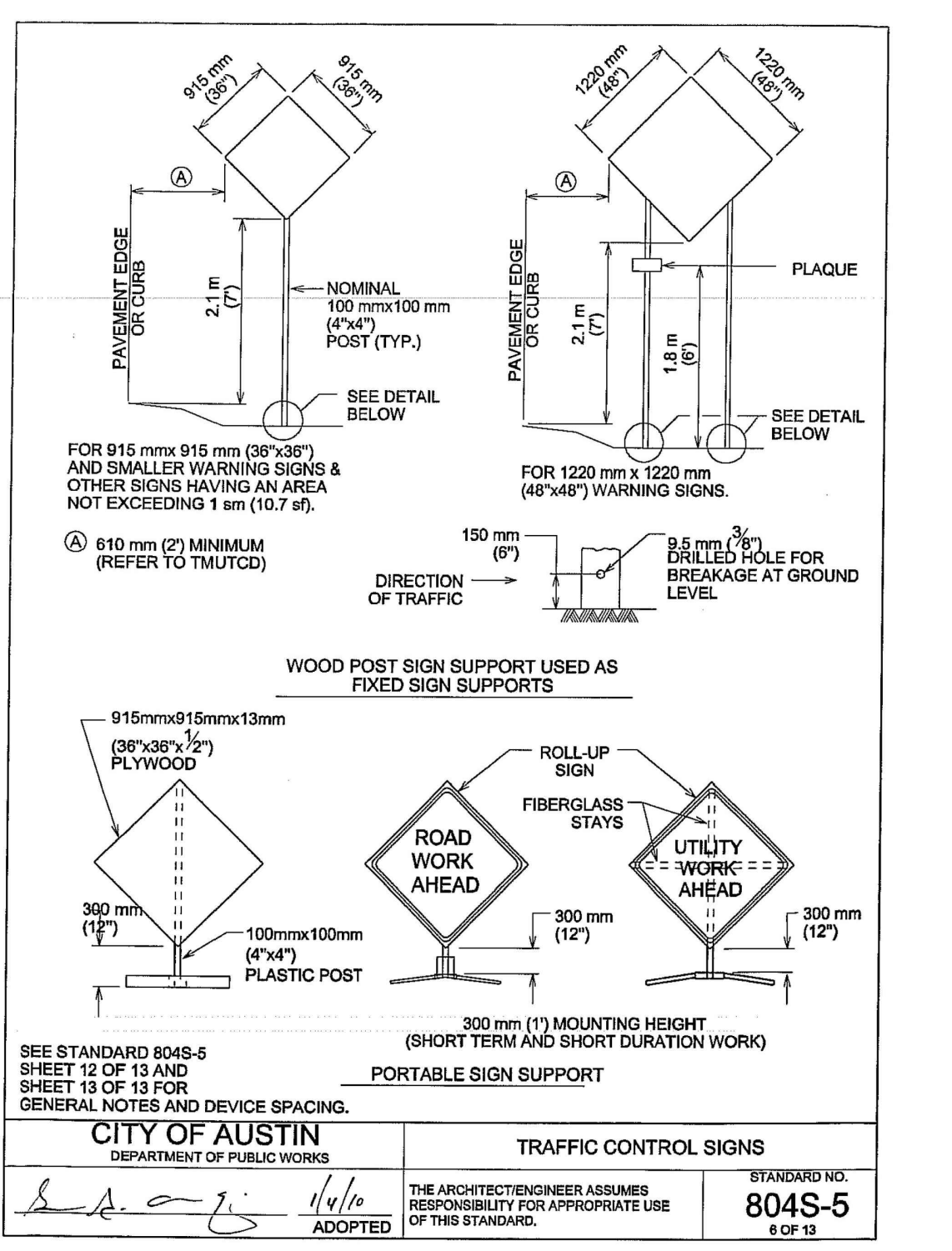
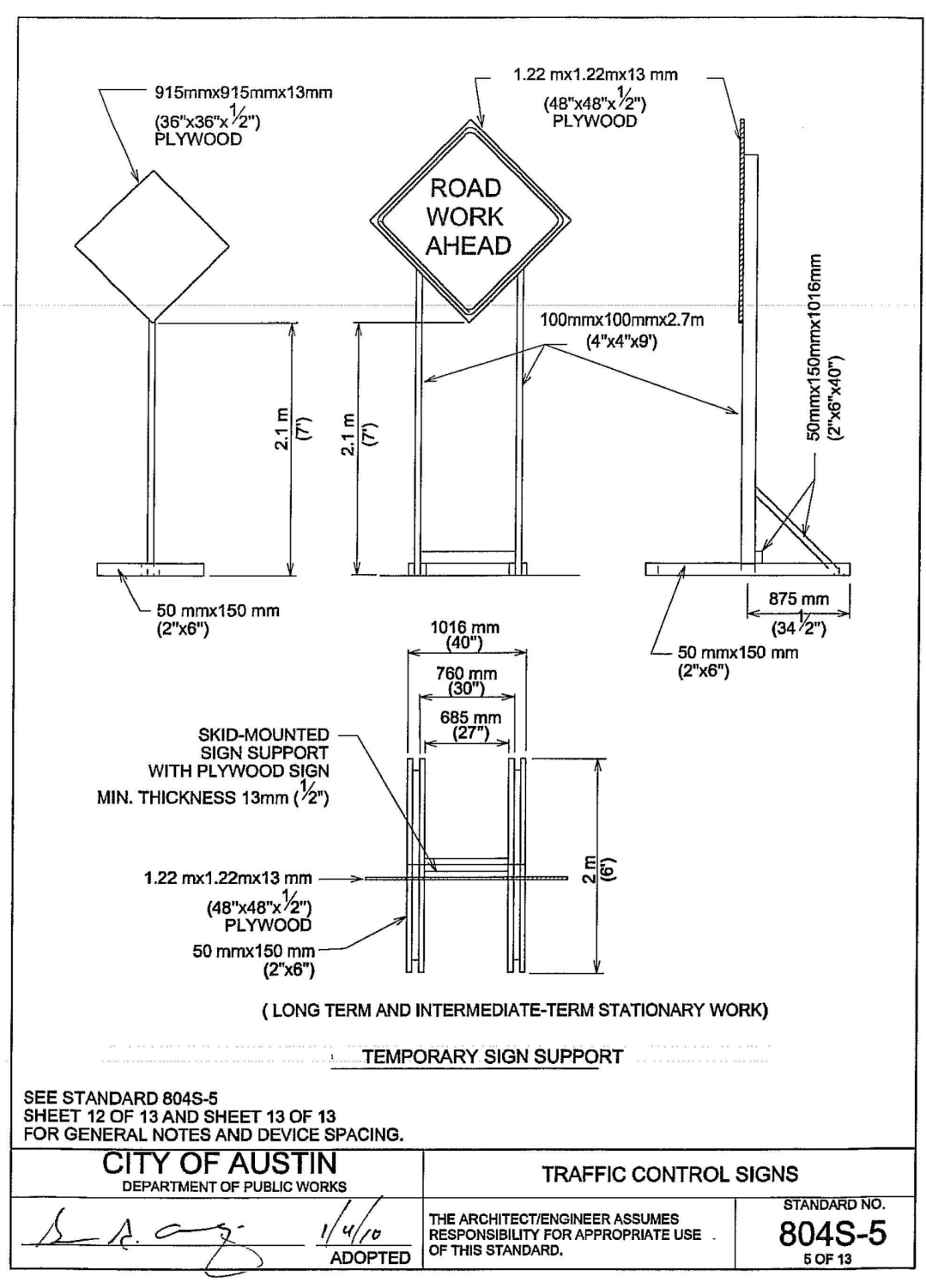
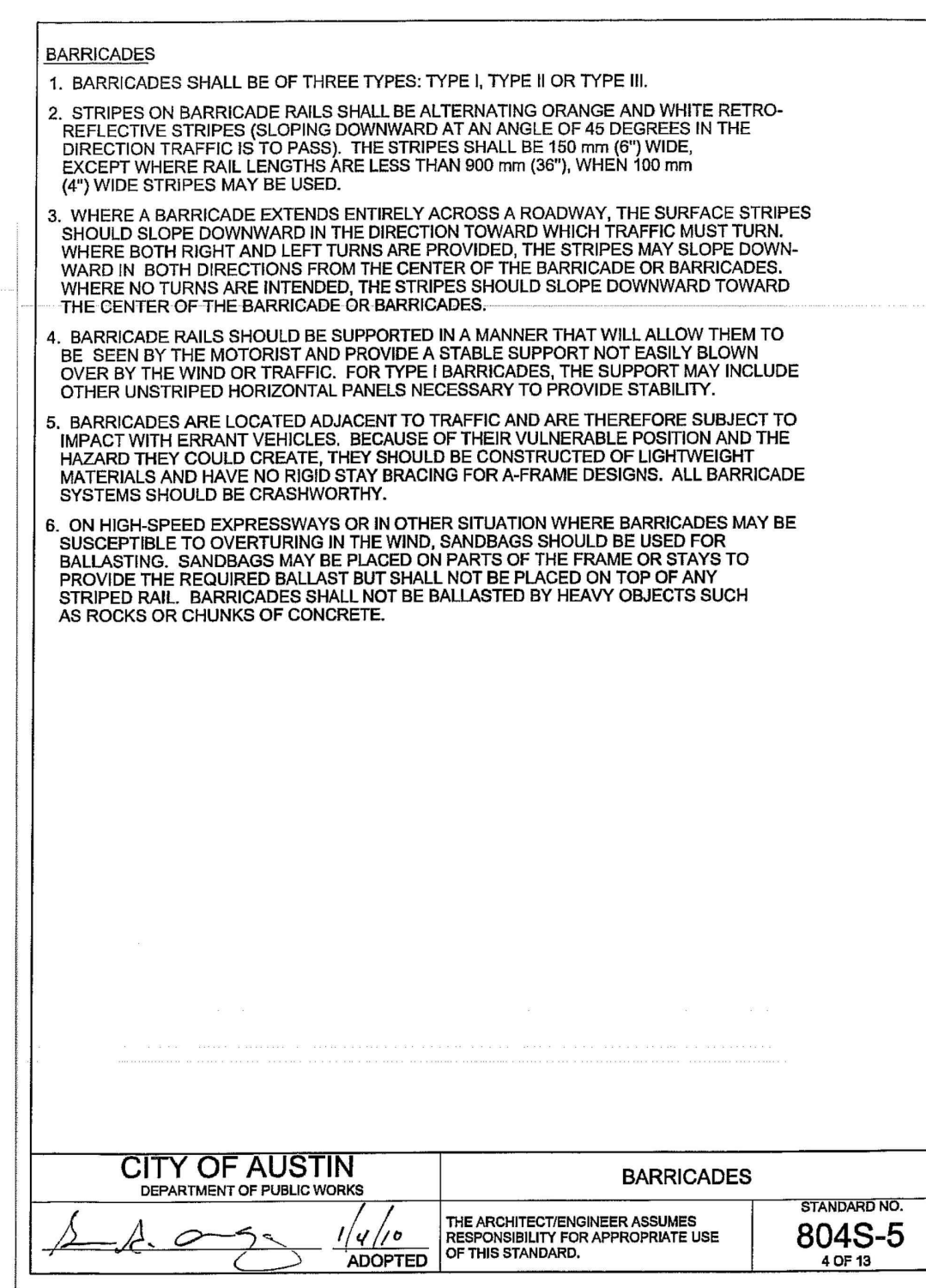
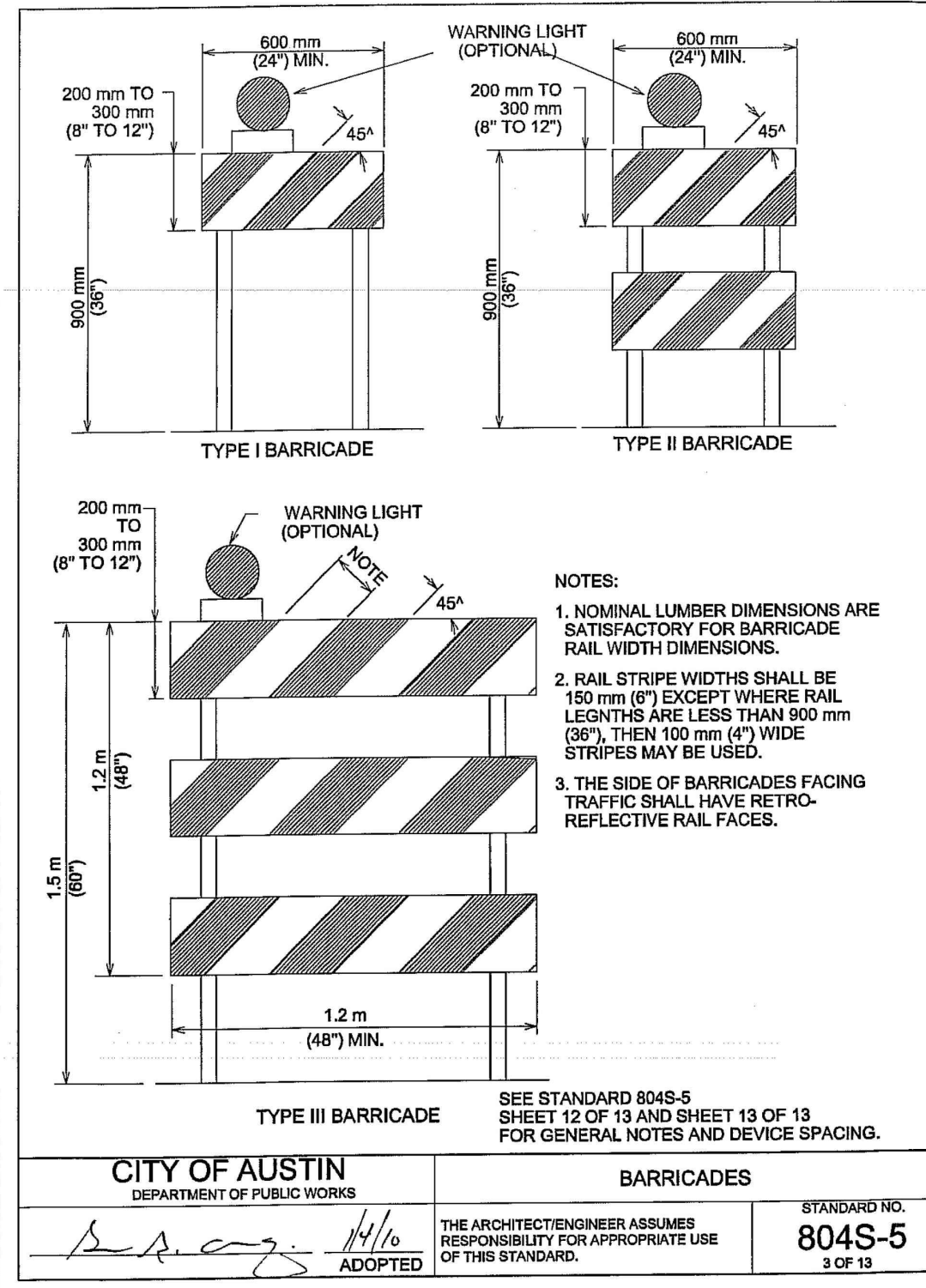
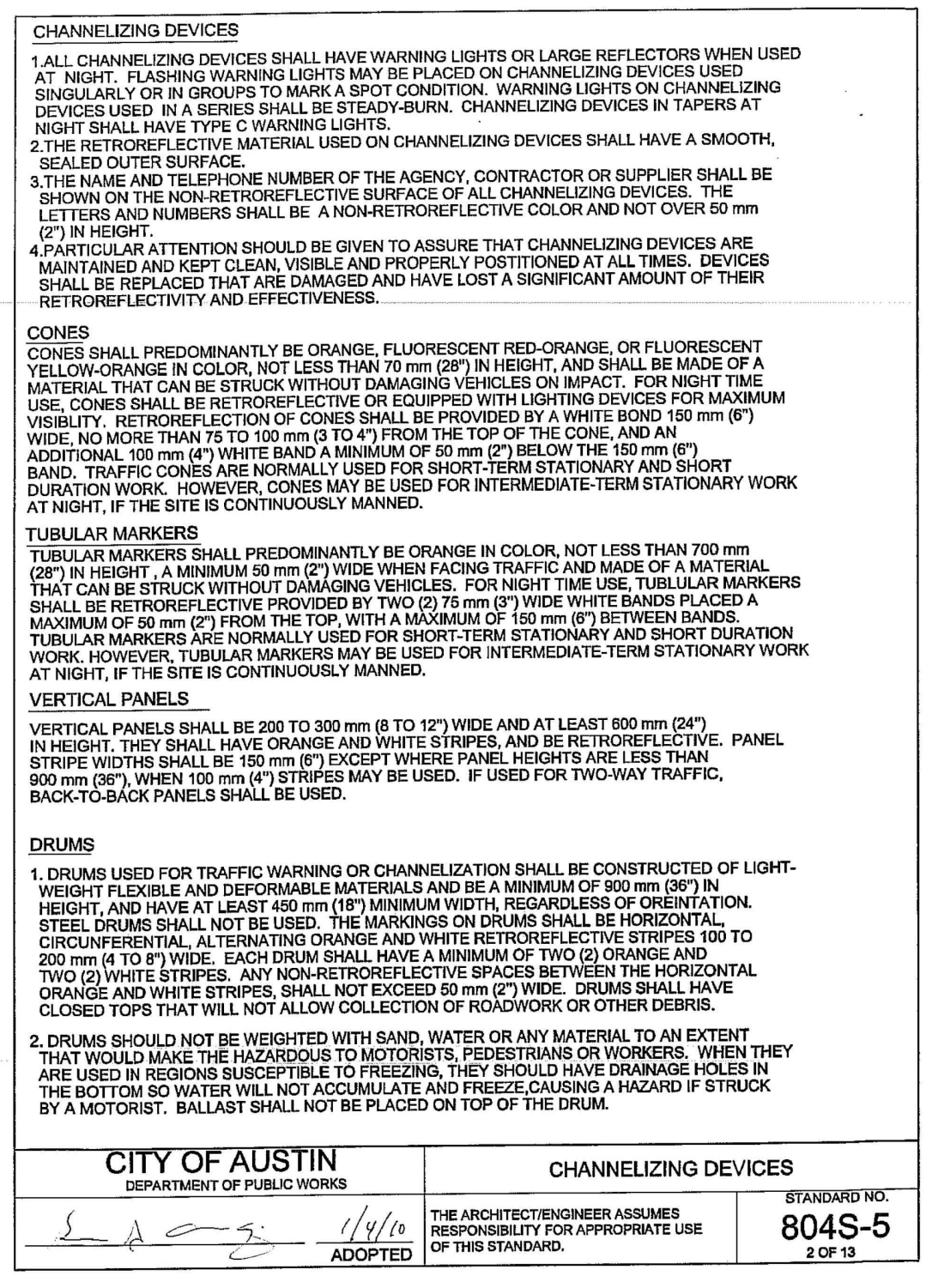
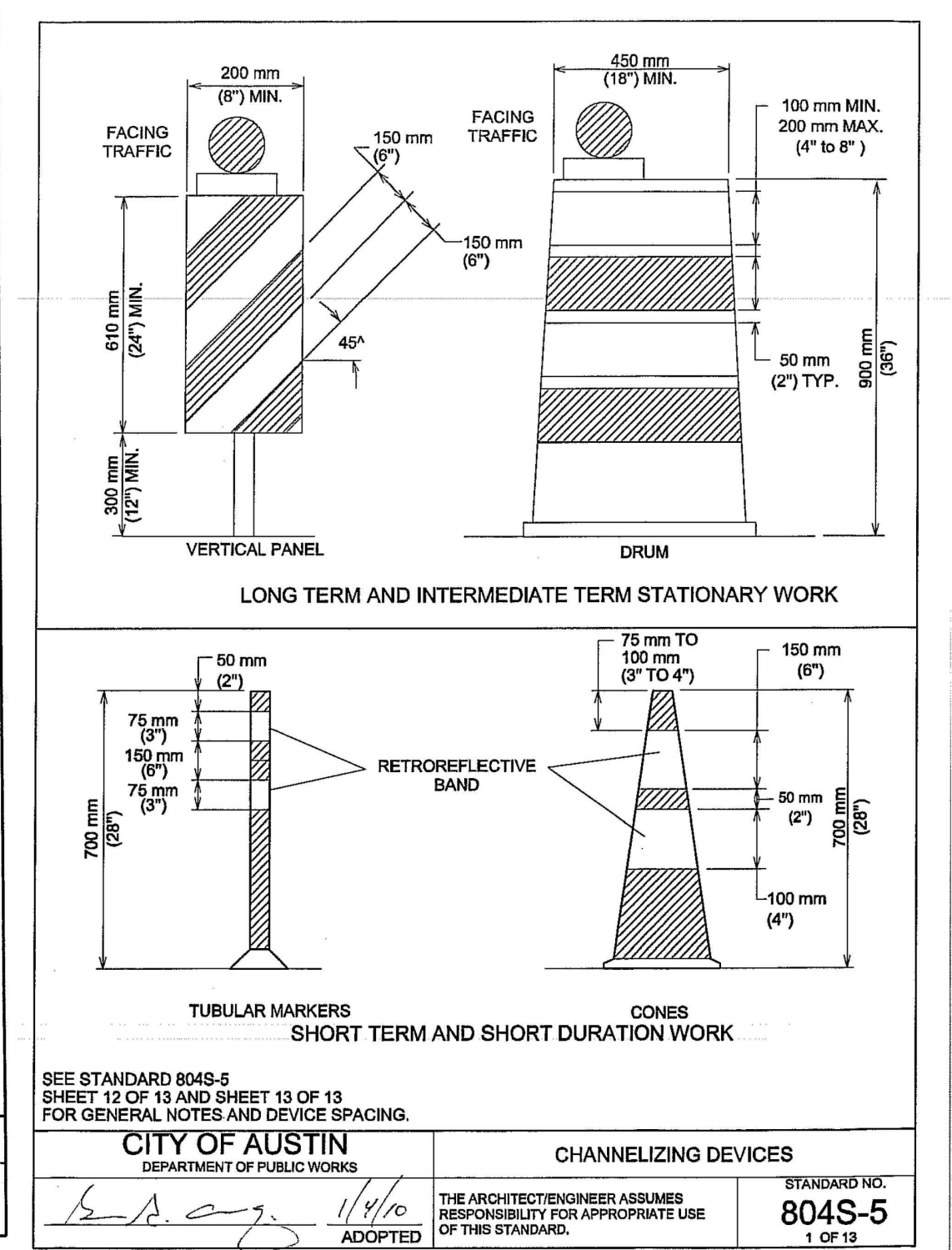
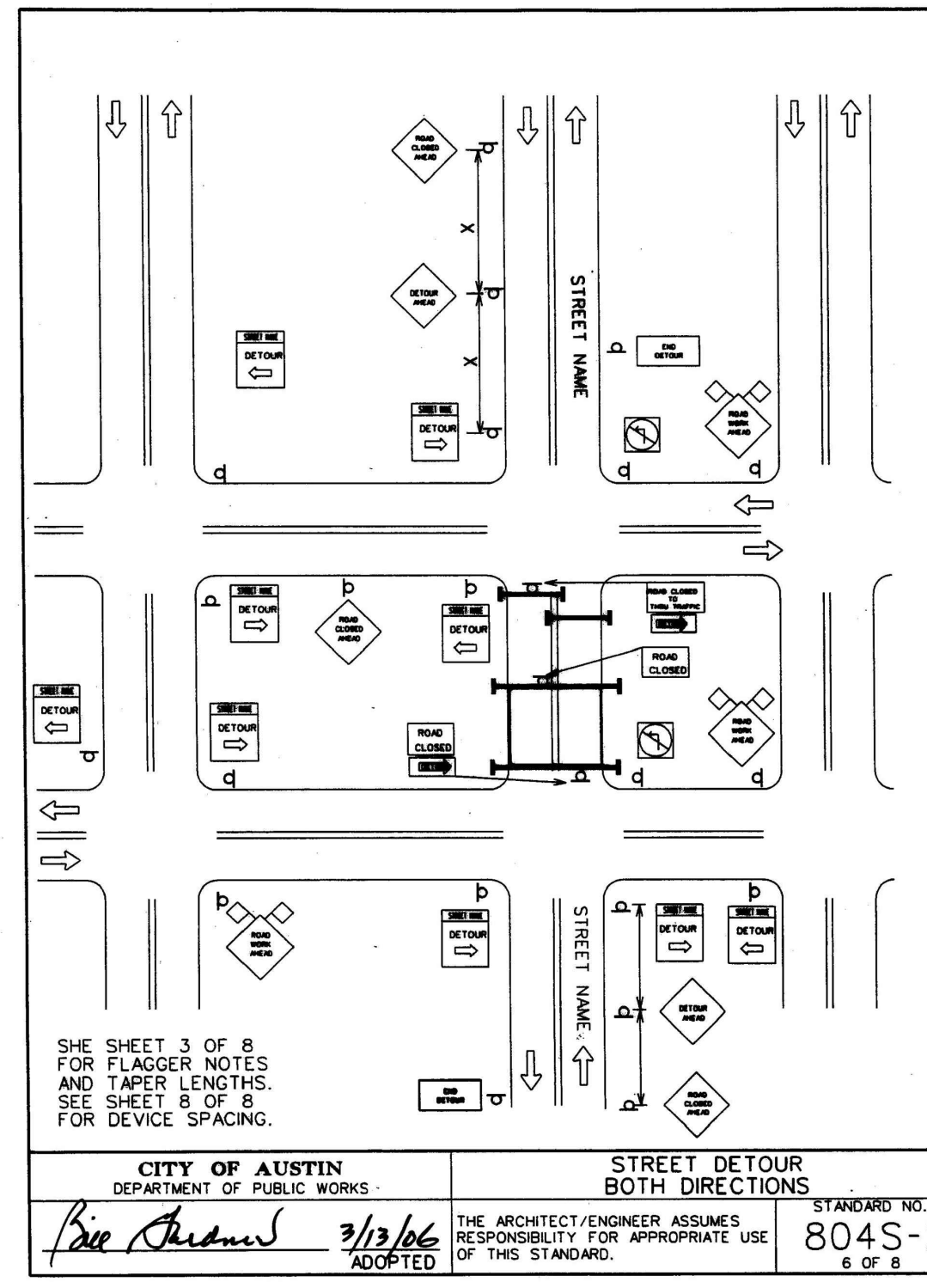
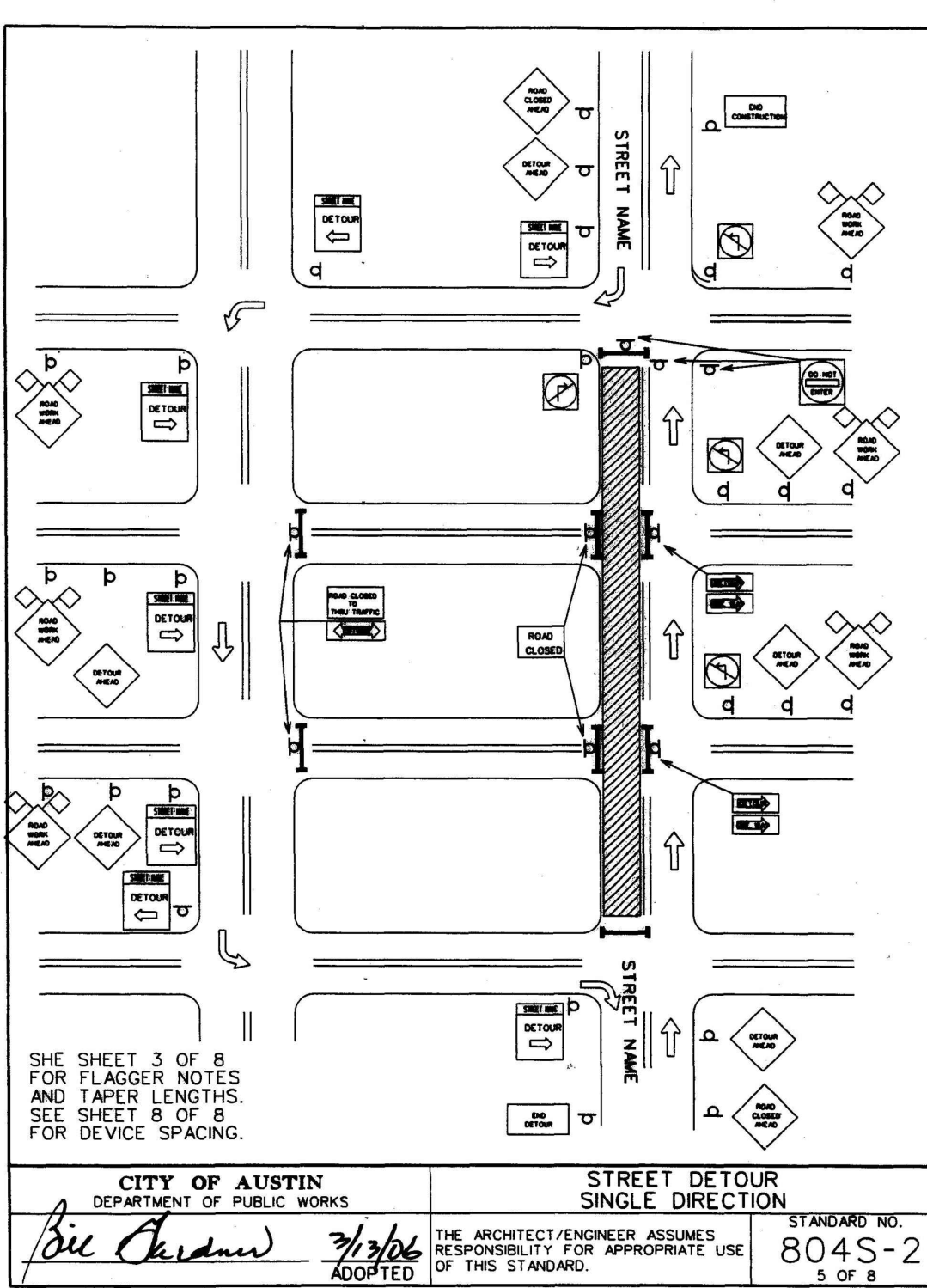
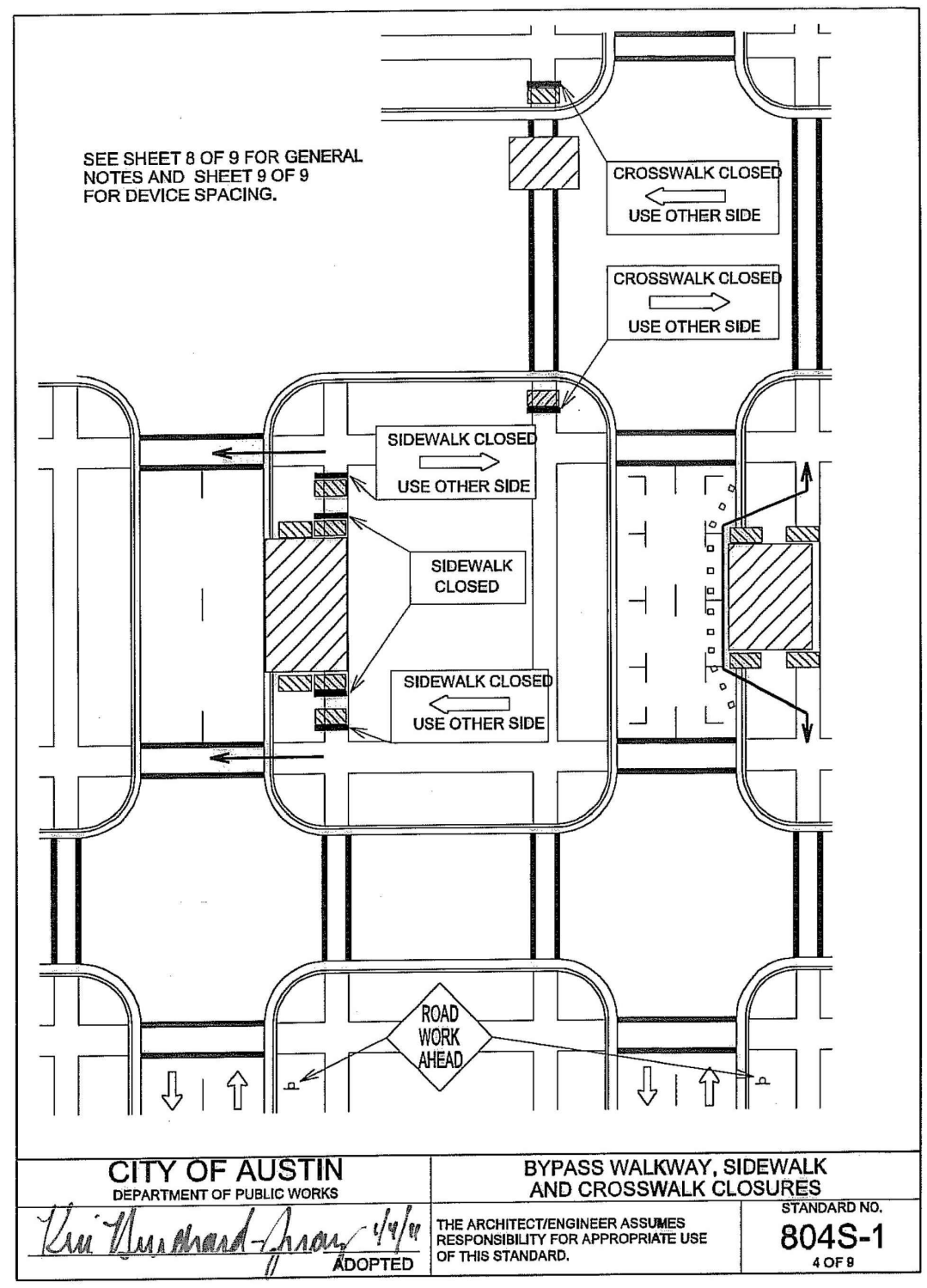
**LEGEND**

- Channelizing devices
- Trailer mounted flashing arrow board
- Flagger

**CITY OF AUSTIN**  
DEPARTMENT OF PUBLIC WORKS  
ADOPTED *4/10*

**DEVICE SPACING**  
THE ARCHITECT/ENGINEER ASSUMES RESPONSIBILITY FOR APPROPRIATE USE OF THIS STANDARD.

STANDARD NO. **804S-1**  
8 OF 8



NO.	DATE	DESCRIPTION	BY

0 1"  
The bar above measures one inch on the original drawing. Adjust scales accordingly.

TEMPORARY TRAFFIC CONTROL PLANS  
DETAILS (SHEET 1 OF 2)

BASTROP SPECIAL SMALL EVENT/PARADE ROUTE  
CITY OF BASTROP, TX

PLOTTED: 11/01/2022  
JOB NO: 345-05B

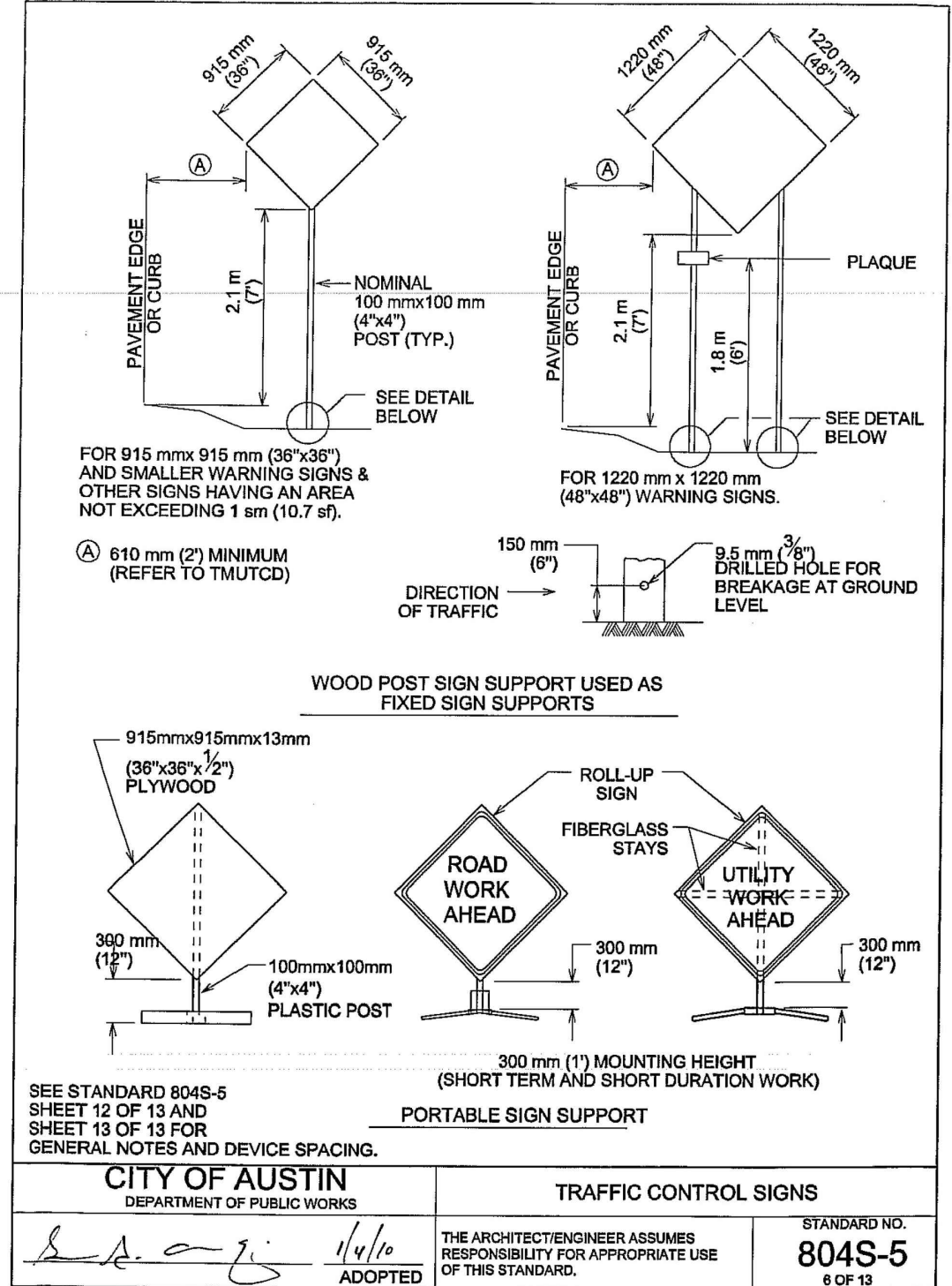
TC-04  
5 OF 6

**mwm DesignGroup**

305 East Huntland Drive  
Suite 200  
Austin, Texas 78752  
p: 512.453.0767  
f: 512.453.1734

TBAE FIRM REGISTRATION NO.: 1452  
TBPE FIRM REGISTRATION NO.: F-1416  
TBPLS FIRM REGISTRATION NO.: 10065600

STATE OF TEXAS  
PROFESSIONAL ENGINEER  
STEPHEN RICHARD ZOBAL  
10788  
6/27/23  
MWM DesignGroup, Inc.  
F-1416



1. WARNING SIGNS SHALL BE ORANGE, FLUORESCENT RED-ORANGE OR FLUORESCENT YELLOW-ORANGE IN COLOR. THE FLUORESCENT VERSIONS OF ORANGE PROVIDE HIGHER CONSPICUITY THAN STANDARD ORANGE, ESPECIALLY DURING TWILIGHT. ALL SIGNS USED AT NIGHT SHALL BE EITHER RETROREFLECTIVE, WITH A MATERIAL THAT HAS A SMOOTH, SEALED OUTER SURFACE, OR ILLUMINATED TO SHOW SIMILAR SHAPE AND COLOR BOTH DAY AND NIGHT. SIGN ILLUMINATION MAY BE EITHER INTERNAL OR EXTERNAL. ROADWAY LIGHTING DOES NOT MEET THE REQUIREMENTS FOR SIGN ILLUMINATION.
2. TYPE A FLASHING WARNING LIGHTS MAY BE USED IN CONJUNCTION WITH SIGNS AT NIGHT. STANDARD ORANGE FLAGS MAY BE USED FOR DAY TIME OPERATIONS. HOWEVER, NEITHER LIGHTS NOR FLAGS MAY BLOCK THE SIGN LEGEND.
3. SIGNS SHOULD BE LOCATED ON THE RIGHT-HAND SIDE OF THE ROADWAY. WHEN SPECIAL EMPHASIS IS NEEDED, SIGNS MAY BE PLACED ON BOTH THE LEFT AND RIGHT SIDES OF ROADWAY. SIGNS SHALL BE PLACED ON BOTH THE LEFT AND RIGHT SIDES OF ONE-WAY OR DIVIDED ROADWAYS. SIGNS USED FOR LONG-TERM STATIONARY AND INTERMEDIATE-TERM STATIONARY WORK SHALL BE MOUNTED AT A HEIGHT OF AT LEAST 2.1 m (7') MEASURED FROM THE BOTTOM OF THE SIGN. THE HEIGHT TO THE BOTTOM OF A SECONDARY SIGN MOUNTED BELOW ANOTHER SIGN MAY BE 0.3 m (1') LESS THAN THE APPROPRIATE HEIGHT ABOVE.
4. SIGNS MAY BE MOUNTED ON PORTABLE SUPPORTS FOR SHORT-TERM, SHORT DURATION, MOBILE CONDITIONS AND EMERGENCIES. SIGNS MOUNTED ON PORTABLE SUPPORTS SHALL BE AT A HEIGHT OF AT LEAST 0.3 m (1') MEASURED FROM THE BOTTOM OF THE SIGN.
5. ALL SIGN SYSTEMS SHOULD BE CRASHWORTHY. NO SIGN MOUNTS SHALL BLOCK OR IMPEDE SIDEWALKS UNLESS NO OTHER OPTION IS AVAILABLE. ONLY SANDBAGS SHOULD BE USED FOR BALLASTING SIGN MOUNTS.

TABLE VI-3 TYPICAL CONSTRUCTION WARNING SIGN SIZE AND SPACING

Roadway Class	Posted Speed	Sign Spacing	Long-term Stationary Or Intermediate-term Stationary Approaching Warning Sign CW22 Series And CW22-1 Sign		Short-term Stationary Or Short Duration Approaching Warning Sign CW22 Series		Other Warning Signs
			Standard	Minimum	Standard	Minimum	
Convex	KPH (MPH)	meter (feet)	mm (inches)	mm (inches)	mm (inches)	mm (inches)	mm (inches)
	50 (30)	40 (130)	1220-1220 (48-48)	915-915 (36-36)			915-915 (36-36)
	58 (36)	40 (130)		915-915 (36-36)			
	65 (40)	75 (240)					
	70 (43)	100 (320)		Use Standard Size			Use Standard Size
	80 (50)	100 (320)					
	80 (50)	150 (480)					
	100 (60)	200 (650)			1220-1220 (48-48)		1220-1220 (48-48)
	105 (65)	210 (690)					
	115 (70)	240 (780)					
Exp. or Pav	**	**	**	**	**	**	**

\* MINIMUM DISTANCE FROM WORK TO 1st ADVANCE WARNING SIGN AND/OR DISTANCE BETWEEN EACH ADDITIONAL SIGN.  
 \*\* FOR TYPICAL SIGN SPACINGS ON EXPRESSWAYS AND FREEWAYS, REFER TO THE CURRENT ADDITION OF T.M./C.D.  
 \*\*\* SMALLER SIGN SIZES MAY BE USED WHERE SIGN DESIGNS HAVE NOT BEEN INCLUDED IN THE "STANDARD HIGHWAY SIGN DESIGN MANUAL."

1. SPECIAL OR LARGER SIZE SIGNS MAY BE USED AS NECESSARY.
2. DISTANCE BETWEEN SIGNS SHOULD BE INCREASED AS REQUIRED TO HAVE 450 m (1500') OR MORE ADVANCE WARNING.
3. DISTANCE BETWEEN SIGNS SHOULD BE INCREASED AS REQUIRED TO HAVE A 0.8 km (1/2 MILE) OR MORE ADVANCE WARNING.
4. FOR USE ONLY ON SECONDARY ROADS OR CITY STREETS WHERE SPEEDS ARE LOW.

SEE STANDARD 804S-5 SHEET 12 OF 13 AND SHEET 13 OF 13 FOR GENERAL NOTES AND DEVICE SPACING.

**CITY OF AUSTIN**  
DEPARTMENT OF PUBLIC WORKS

**TRAFFIC CONTROL SIGNS**

STANDARD NO. **804S-5**  
9 OF 13

THE ARCHITECT/ENGINEER ASSUMES RESPONSIBILITY FOR APPROPRIATE USE OF THIS STANDARD.

ADOPTED 1/4/10

**CITY OF AUSTIN**  
DEPARTMENT OF PUBLIC WORKS

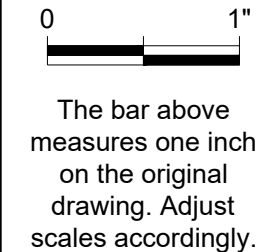
**TRAFFIC CONTROL SIGNS**

STANDARD NO. **804S-5**  
7 OF 13

THE ARCHITECT/ENGINEER ASSUMES RESPONSIBILITY FOR APPROPRIATE USE OF THIS STANDARD.

ADOPTED 1/4/10

NO.	DATE	DESCRIPTION	BY

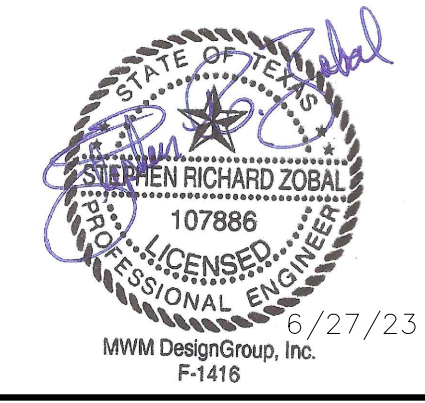


TEMPRARY TRAFFIC CONTROL PLANS  
DETAILS (SHEET 2 OF 2)

BASTROP SPECIAL SMALL EVENT/PARADE ROUTE  
CITY OF BASTROP, TX

PLOTTED: 11/01/2022  
JOB NO: 345-05B

TC-05  
6 OF 6



305 East Huntland Drive  
Suite 200  
Austin, Texas 78752  
p: 512.453.0767  
f: 512.453.1734

TBAE FIRM REGISTRATION NO.: 1452  
TBPE FIRM REGISTRATION NO.: F-1416  
TBPLS FIRM REGISTRATION NO.: 10065600