

The name DUTCH BROS. and all associated logos, distinctive designs, content, information, and other materials featured, displayed, contained herein, and made available by Dutch Bros, including but not limited to the "look and feel" of the establishments and products, all to all images, colors, configurations, graphics, designs, illustrations, photographs, and pictures (collectively, the "Materials") are owned by and/or licensed by DB Franchising USA, LLC and are protected by copyright, trademark, trade dress, patent, and/or other intellectual property rights and under competition laws under the United States and foreign laws.

## EXTERIOR FINISH AREA CALCULATIONS

BUILDING ELEVATION	EIFS	FIBER CEMENT PANEL	STOREFRONT	SPLIT FACE CMU	TOTAL FACADE AREA
1 - NORTH	227.5 SF (39.2%)	224.0 SF (38.7%)	56.7 SF (9.8%)	70.9 SF (12.2%)	579.1 SF
2 - WEST	805.2 SF (75%)	52.3 SF (4.9%)	70.5 SF (6.6%)	144.1 SF (13.4%)	1,072.1 SF
3 - SOUTH	366.6 SF (73.8%)	109.3 SF (22%)	0.0 SF (0%)	21.0 SF (4.2%)	496.9 SF
4 - EAST	694.0 SF (67.4%)	224.0 SF (21.7%)	24.0 SF (2.3%)	88.1 SF (8.5%)	1,030.1 SF

(1A) OUTSULATION EIF SYSTEM - COLOR: BLDG DB DARK GRAY

(1B) OUTSULATION EIF SYSTEM - COLOR: BLDG DB LIGHT GRAY

(2) FIBER CEMENT SIDING - COLOR: DUTCH BROS BLUE

(3) CMU VENEER - COLOR: CHARCOAL (REVIEW FINAL COLOR SELECTION W/ DBC)

(4) METAL TRIM- FASCIA, SHEET METAL CAPS/ PAINT DUTCH BROS DARK GRAY

PRE-FINISHED CLEAR ANODIZED ALUM. STOREFRONT

(HEWN) SOFFIT MATERIAL UNDER THE LARGE CANOPY

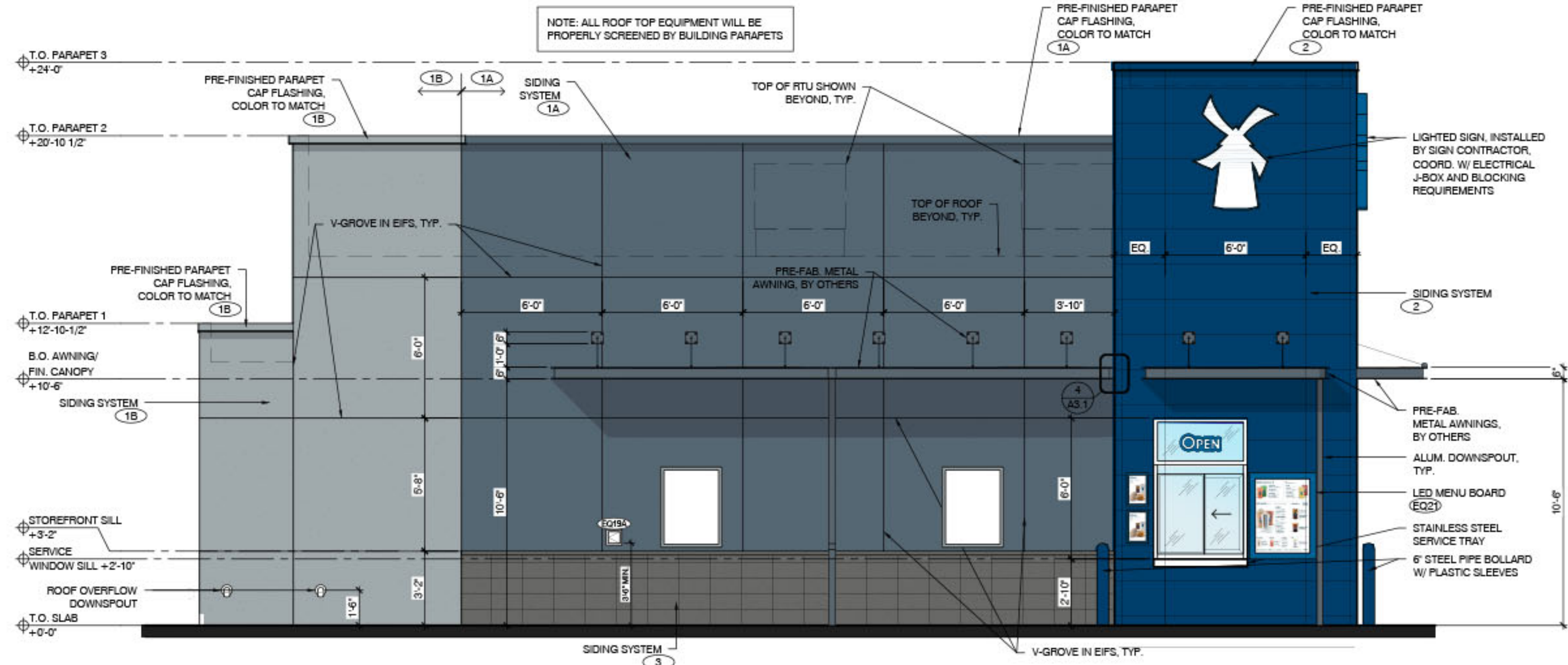
## EXTERIOR FINISH SCHEDULE - PROTOTYPICAL w/ CANOPY

ID TAG	MATERIAL	MANUFACTURER	MODEL	REMARKS
<b>ZONE 1 (BODY)</b>				
1A	EIFS	DRYVIT	OUTSULATION EIF SYSTEM	COLOR: BLDG DB DARK GRAY
1B	EIFS	DRYVIT	OUTSULATION EIF SYSTEM	COLOR: BLDG DB LIGHT GRAY
<b>ZONE 2 (TOWER)</b>				
2	FIBER CEMENT SIDING	NICHIHA	ILLUMINATION. AWP 1818 W/ MATCHING PANEL CORNERS	COLOR: BLDG DB BLUE
<b>ZONE 3 (BASE)</b>				
3	CMU VENEER	BASALITE	4x8x16, SPLIT FACE	COLOR: CHARCOAL - REVIEW FINAL COLOR SELECTION W/ DBC
	SILL	BASALITE	12x6x16, BEVELED CMU	COLOR: CHARCOAL - RIPPED TO SIZE
<b>ZONE 4 (FRAMED CANOPY)</b>				
4	FASCIA	WESTERN STATES METAL ROOFING	T-GROOVE, 10"	3 SIDES; COLOR: BLDG DB DARK GRAY
5	SOFFIT	HEWN ELEMENTS	NATURAL NORTH-WESTERN SPRUCE	1x6, T&G, 1/8" REVEAL, SEALED
6	COLUMNS	BASALITE	4x8x16, SPLIT FACE	COLOR: CHARCOAL - REVIEW FINAL COLOR SELECTION W/ DBC

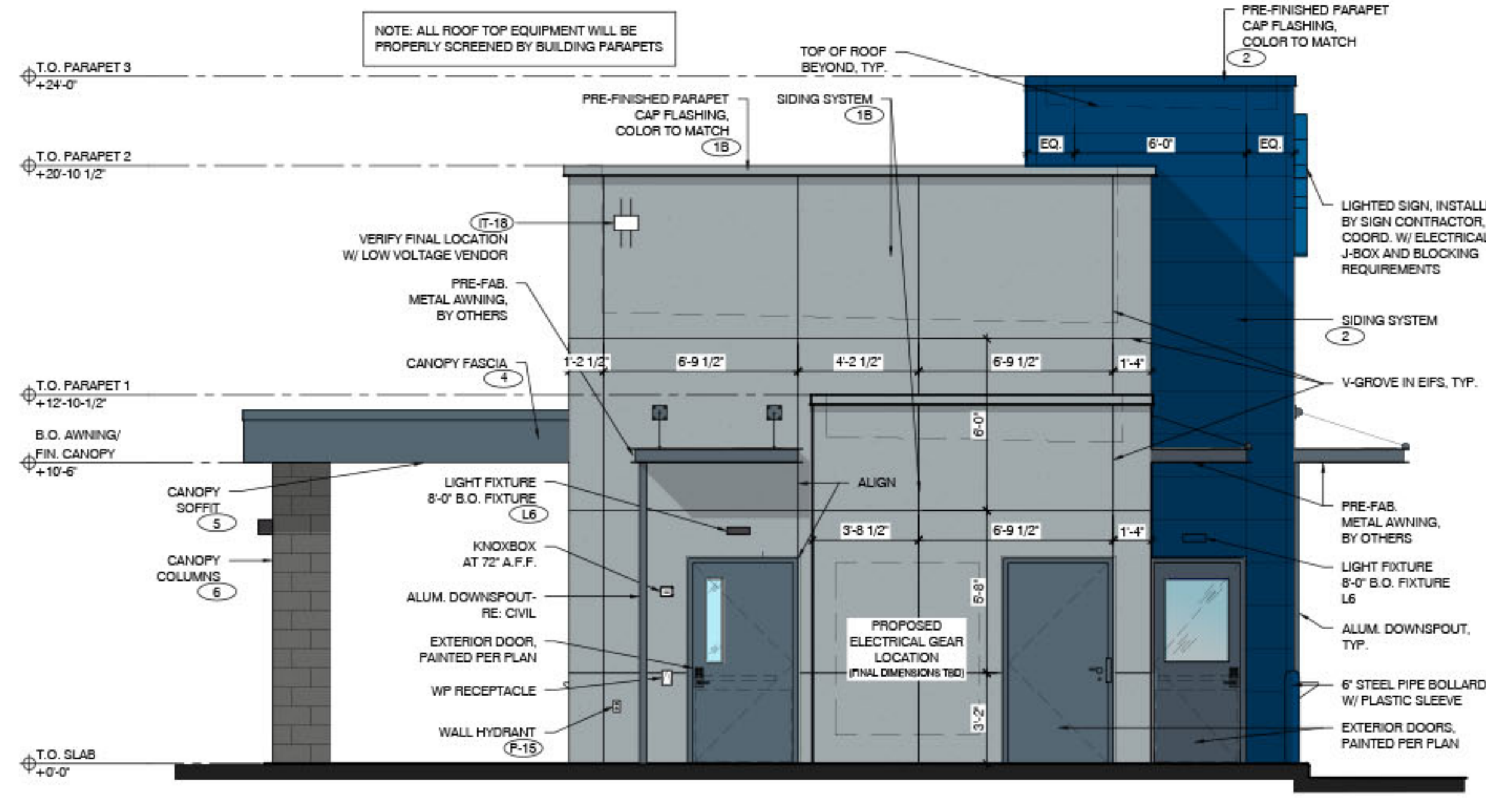
NOTE: GC TO PROVIDE 3"x2" SMOOTH DOWNSPOUTS, AND ALL NECESSARY ADAPTORS, AT AWNING AND CANOPY LOCATIONS; COLOR: BLDG DB DARK GRAY



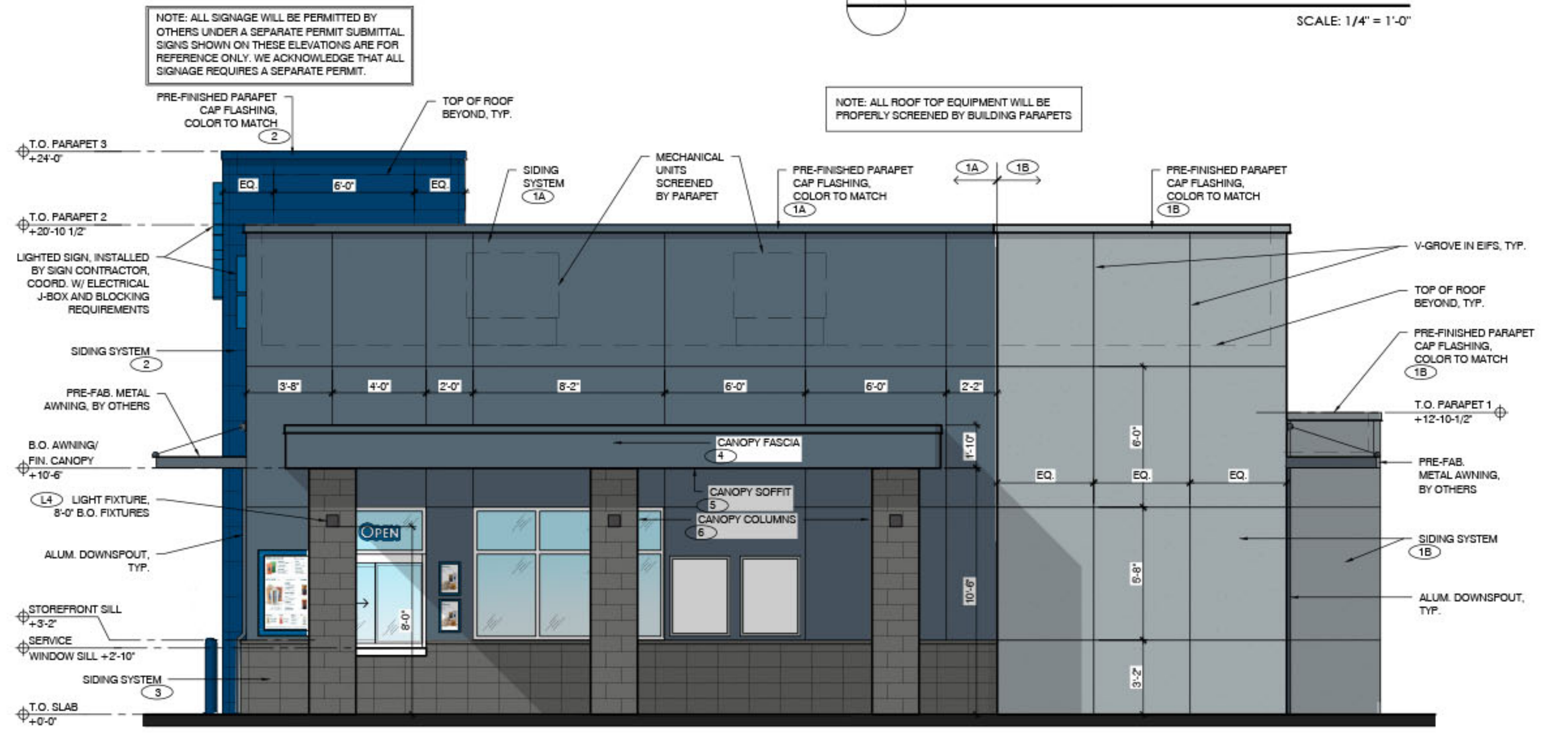
**ARCHITECT**  
 CORALIC, LLC  
 EDIN CORALIC  
 9700 MACKENZIE ROAD, STE. 222,  
 ST. LOUIS, MO 63123  
 P: 314.578.4953  
 edin@coralicarchitecture.com  
**STRUCTURAL ENGINEER**  
 JAMES C. KREHER  
 JIM KREHER  
 208 N. MAIN STREET,  
 COLUMBIA, IL 62236  
 P: 618.281.8505  
 jimk@kreherengineering.com  
**MEP ENGINEER**  
 Case Engineering  
 MATT CASE  
 796 MERUS CT.,  
 FENTON, MO 63026  
 T: 636.349.1600 F: 636.349.1730  
 mcase@caseengineeringinc.com



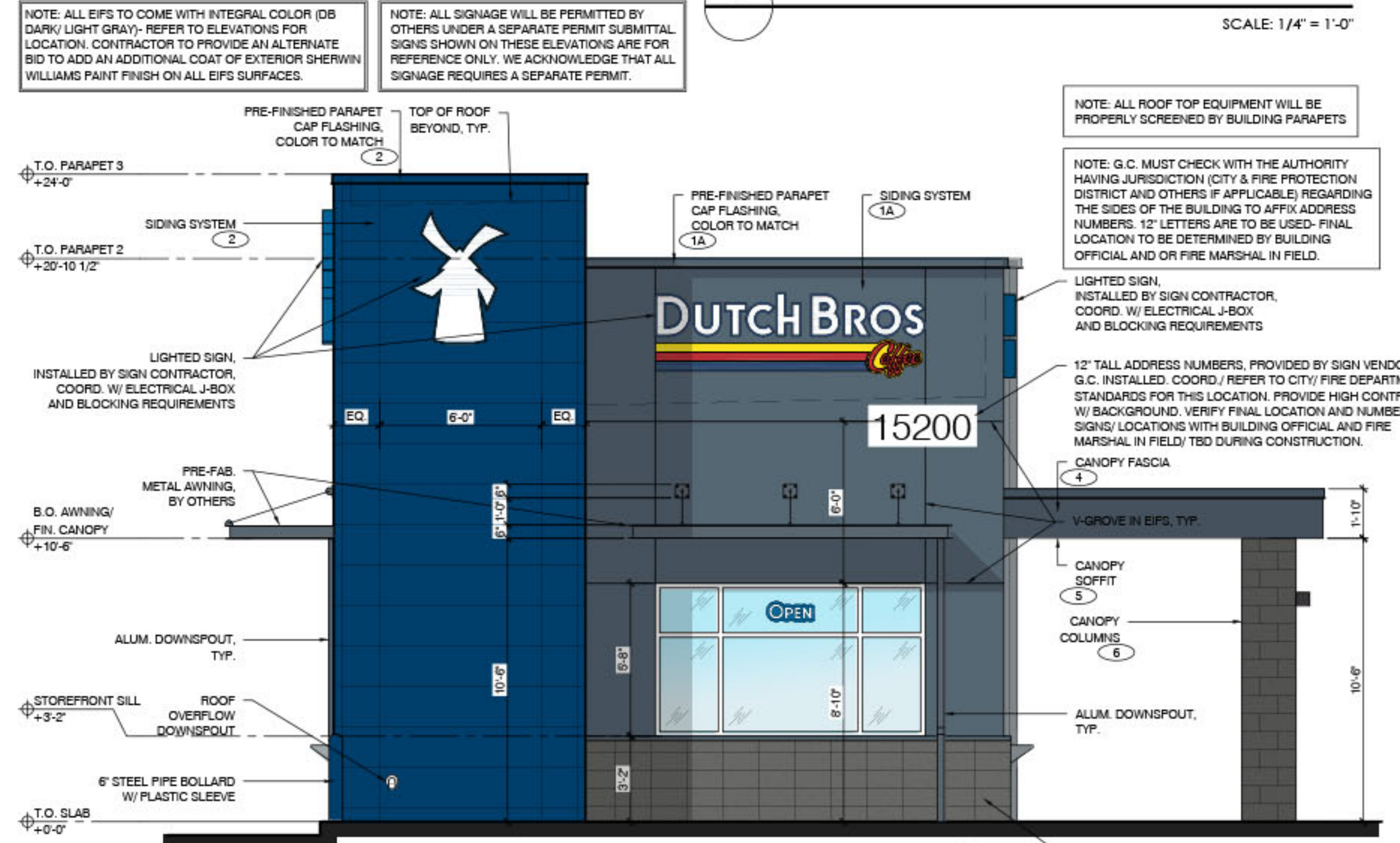
**4 EAST ELEVATION - DRIVE-THRU WINDOW**  
SCALE: 1/4" = 1'-0"



**3 SOUTH ELEVATION**  
SCALE: 1/4" = 1'-0"



**2 WEST ELEVATION - WALK-UP WINDOW**  
SCALE: 1/4" = 1'-0"



**1 NORTH ELEVATION**  
SCALE: 1/4" = 1'-0"

EDIN CORALIC ARCHITECT  
A-2013031004 - EXP. 12-31-2025



MISSOURI CERTIFICATE OF AUTHORITY NO. 2013041393

**Project No: MO0401**

Dutch Bros Coffee  
 New Freestanding Store  
 15200 MANCHESTER RD.  
 BALLWIN, MO 63011  
 for: Dutch Bros Coffee  
 110 SW 4th St. Grants Pass, OR 97526

ISSUED FOR PERMIT: 3.08.24

REV.	DATE	DESCRIPTION

SHEET NAME:

BUILDING ELEVATIONS

SHEET NUMBER:

**A6.1**