



Augusta
GEORGIA

Augusta, GA

Pavement Assessment 2025

Agenda



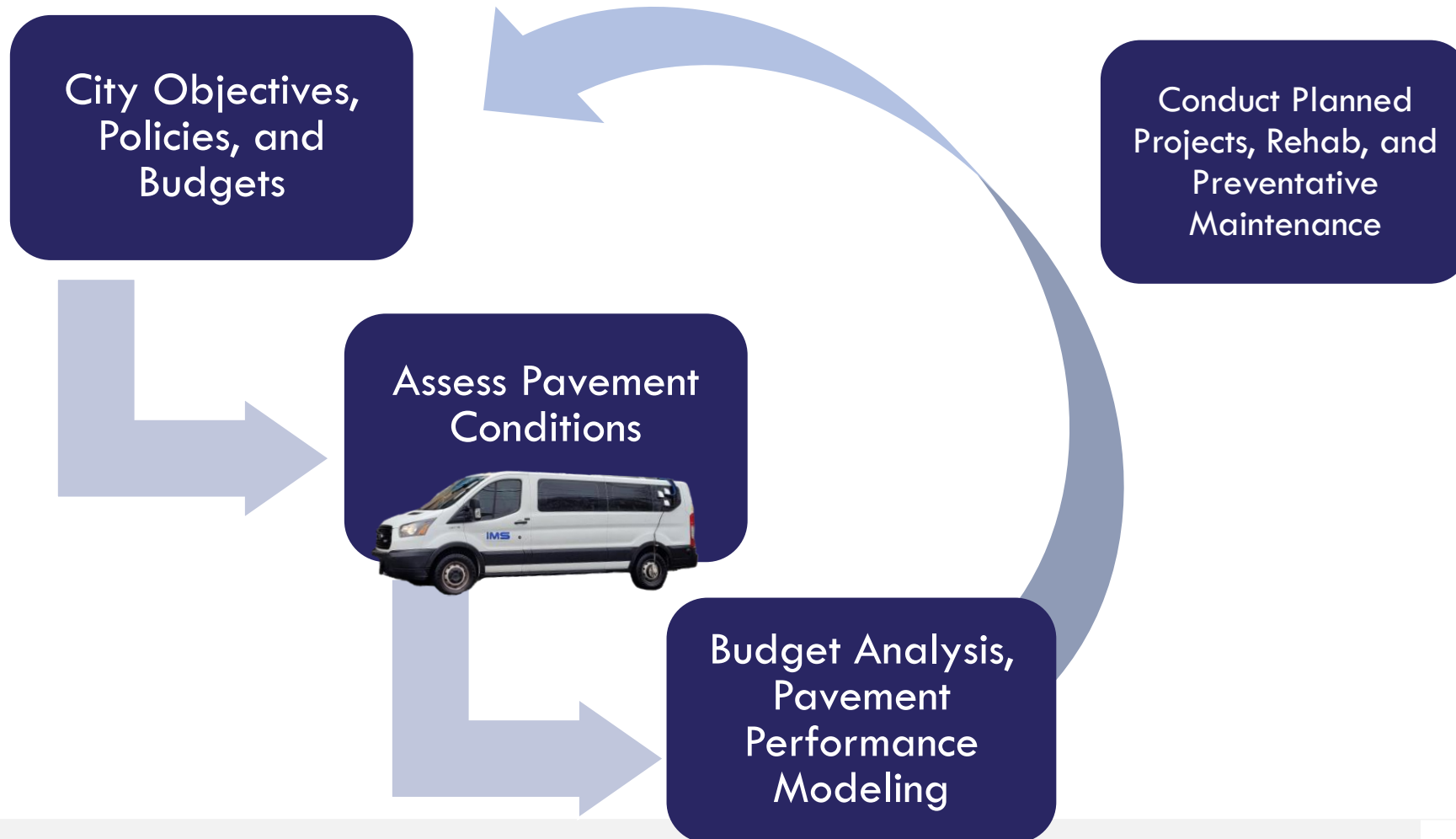
- 1 Pavement Management Process
- 2 Pavement Condition Survey
- 3 Representative Conditions
- 4 Overview of Pavement Conditions
- 5 Analysis and Project Planning



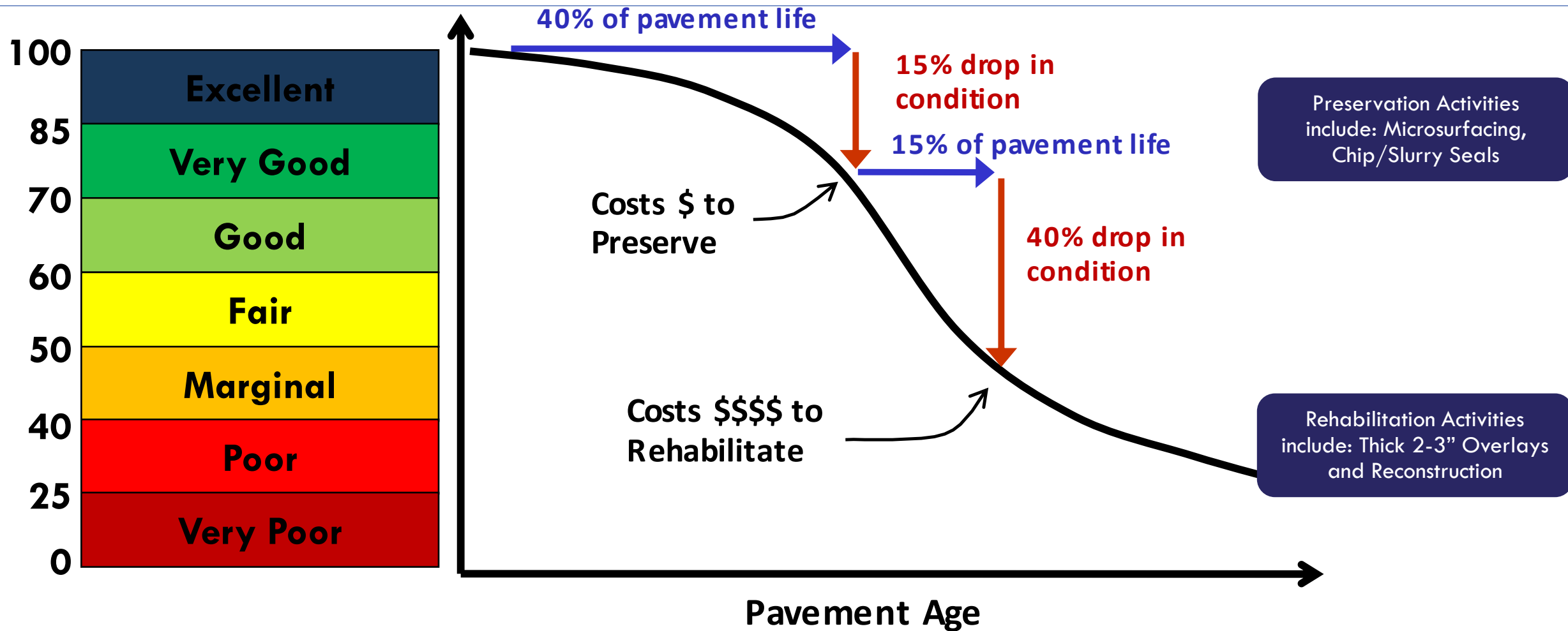
Pavement Management Process



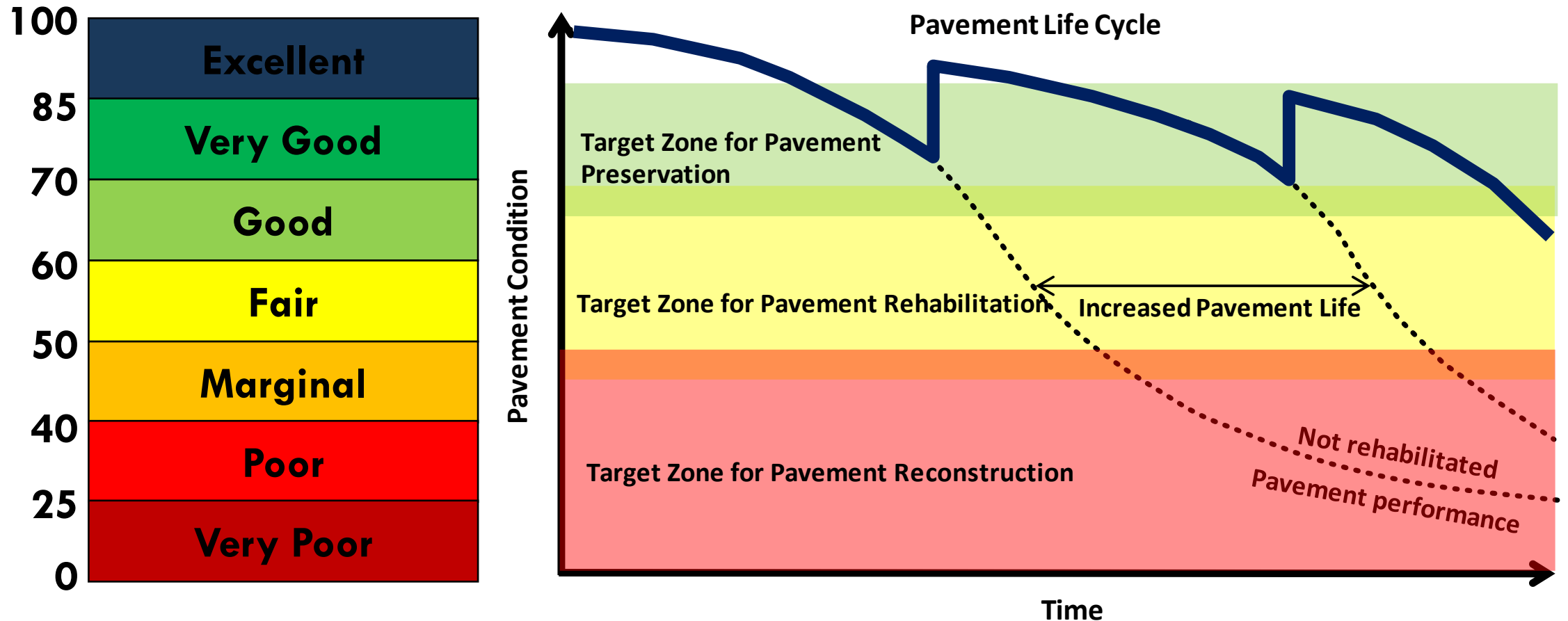
Pavement Management Process



Cost of Deferral



Cost of Deferral



Pavement Condition Survey



Augusta GEORGIA Various Pavement Distresses

Alligator Cracking

Rutting

Longitudinal & Transverse Cracking

Block Cracking

Patching

Raveling

Bleeding

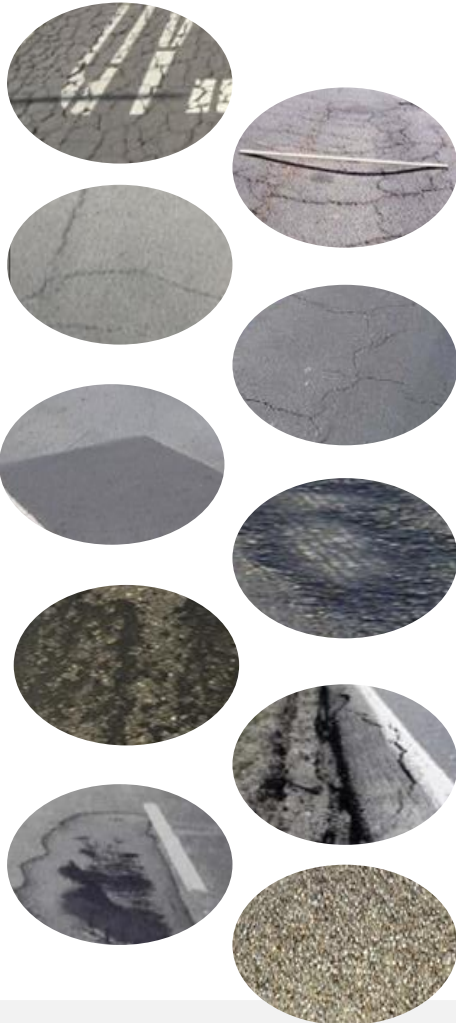
Edge Cracking

Distortion

Weathering

Additional Measurement(s): Roughness

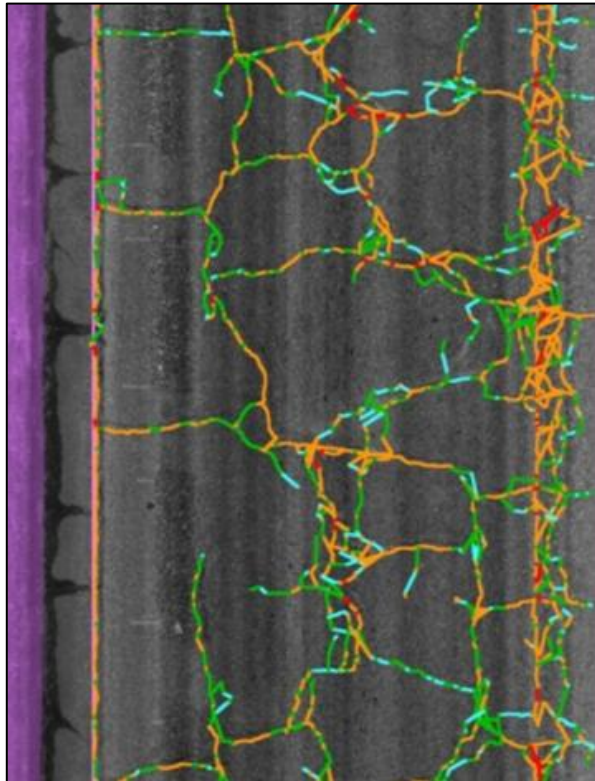
We are paving the way forward.



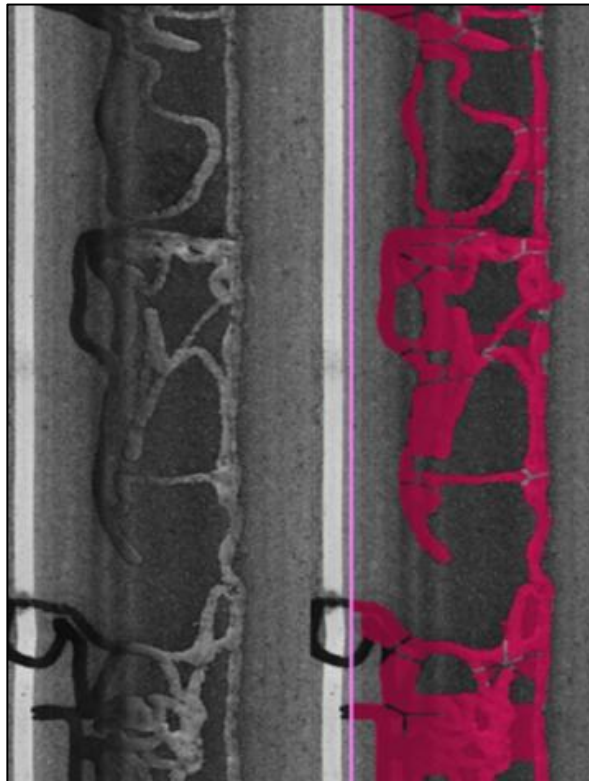
Laser Crack Measurement System (LCMS-2) Pavement Distress Analysis



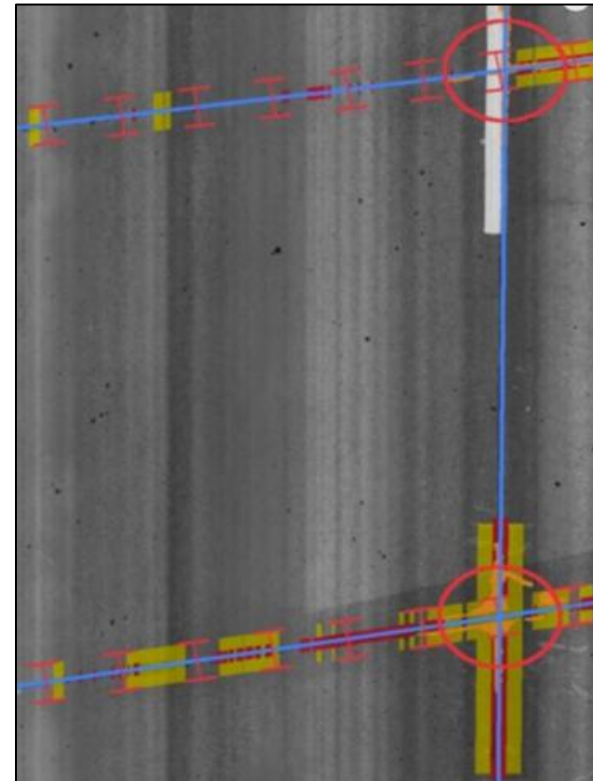
Cracks



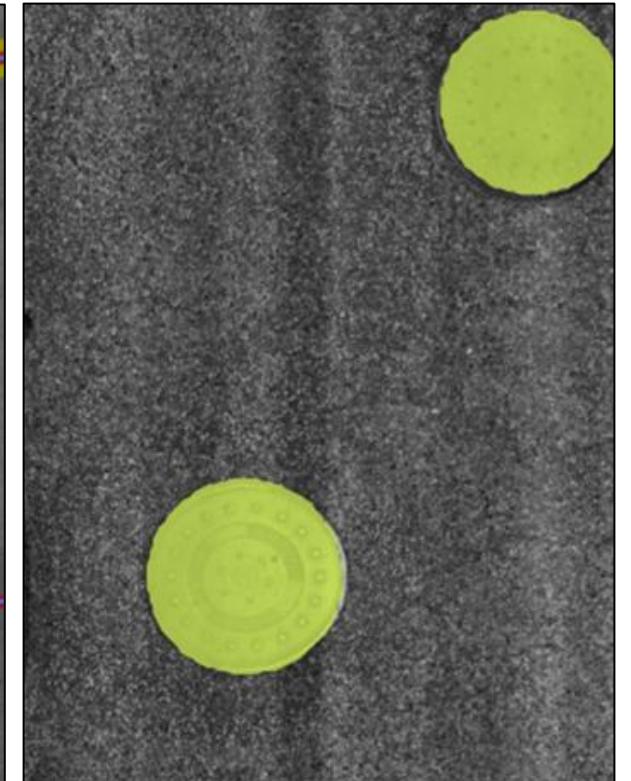
Sealed Cracks



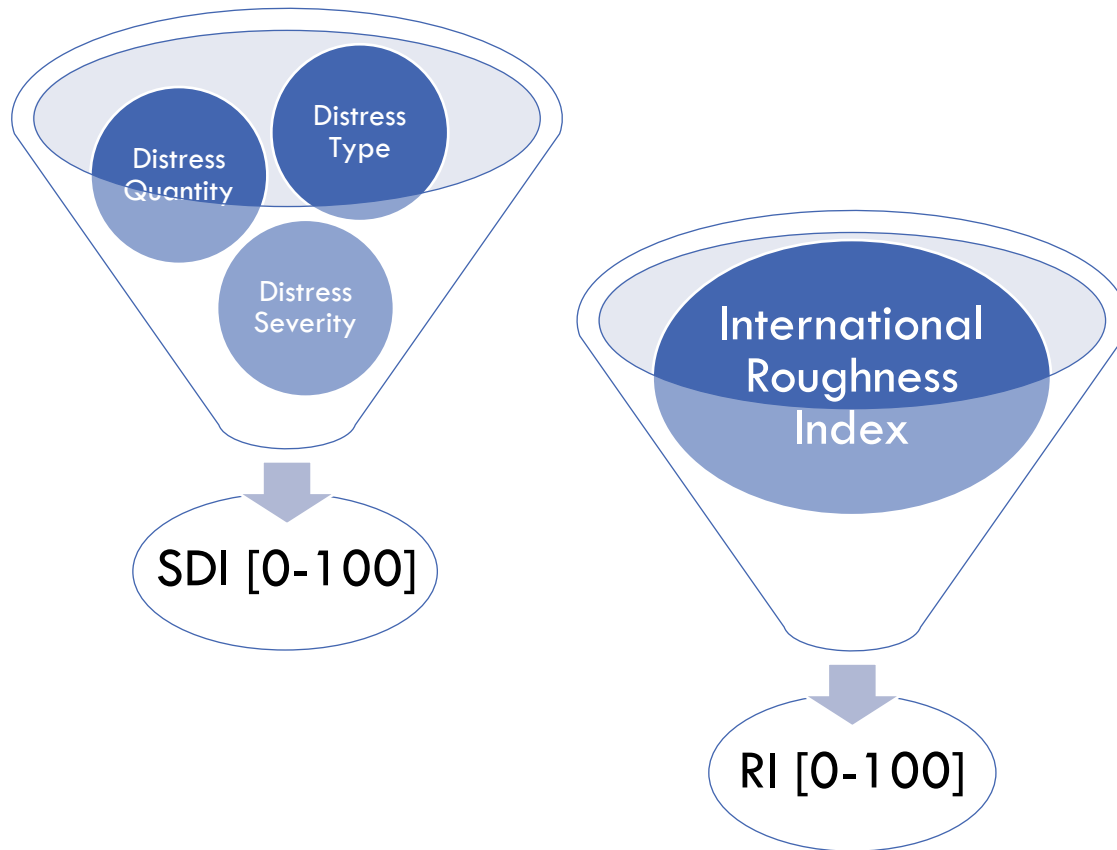
Concrete Joints



Utilities



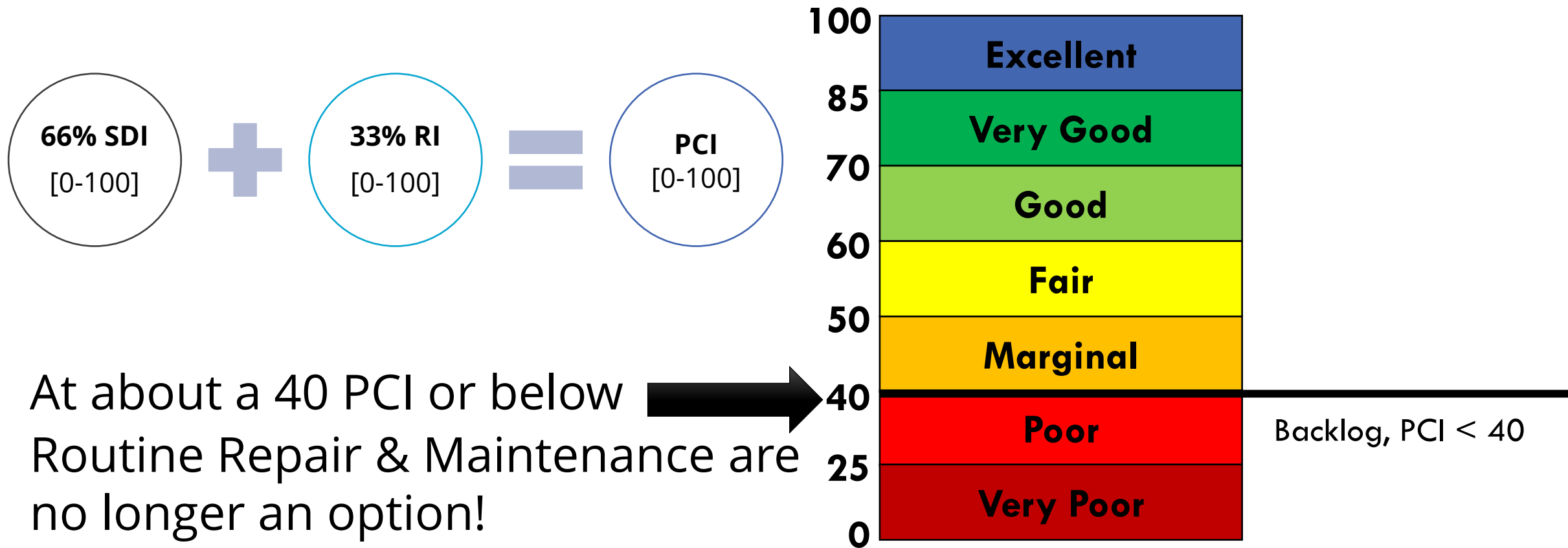
Pavement Measurements (Surface Distress and Roughness)



- SDI: Surface Distress Index (Following ASTM D6433)
 - The aggregation of the observed pavement defects; namely potholes, cracking, and rutting.
- RI: Roughness Index (Following ASTM E1926)
 - A measure of the change in elevation over a distance expressed as a slope and reported in millimeters/meter.

Tested and repeatable standards used in DOTs across the country, including GDOT

Pavement Condition Index (PCI)



Representative Pavement Conditions





**Very Poor (PCI 0 -25)
<1% of the network**

**Taylor Street from
Beans Lane to Seventh
Street
(GISID =94710, PCI = 19)
Alligator Cracking is
major distress.**



**Poor (PCI 25 - 40)
4% of the network**

**Aiken Street from
Beaufort Avenue to Sea
Isle Drive
(GISID 1320, PCI = 30)
Alligator Cracking is
major distress.**

**This street has already
been scheduled for
rehabilitation in coming
years.**



**Marginal (PCI 40 - 50)
7% of the network**

**Richmond Hill Road from
Overlook Road to Lynda
Drive**

**(GISID 82840, PCI = 44)
Isolated Alligator and
longitudinal Cracking**

**This street has already
been scheduled for
rehabilitation in coming
years.**



**Fair (PCI 50 - 60)
11% of the network**

**Johns Road from Central
Avenue to Queens
(GISID 52980, PCI = 56)
Longitudinal and
Transverse Cracking**



Good (PCI 60 - 70)
16% of the network

**Wheless Road from
Pinewood Drive to Clinton
Road
(GISID 105970, PCI = 65)
Minor L&T Cracking**



Very Good (PCI 70 - 85)
30% of the network

**Wrightsboro Road from
Johns Road to Anthony
Road
(GISID 110560, PCI = 73)
Minor L&T Cracking.**



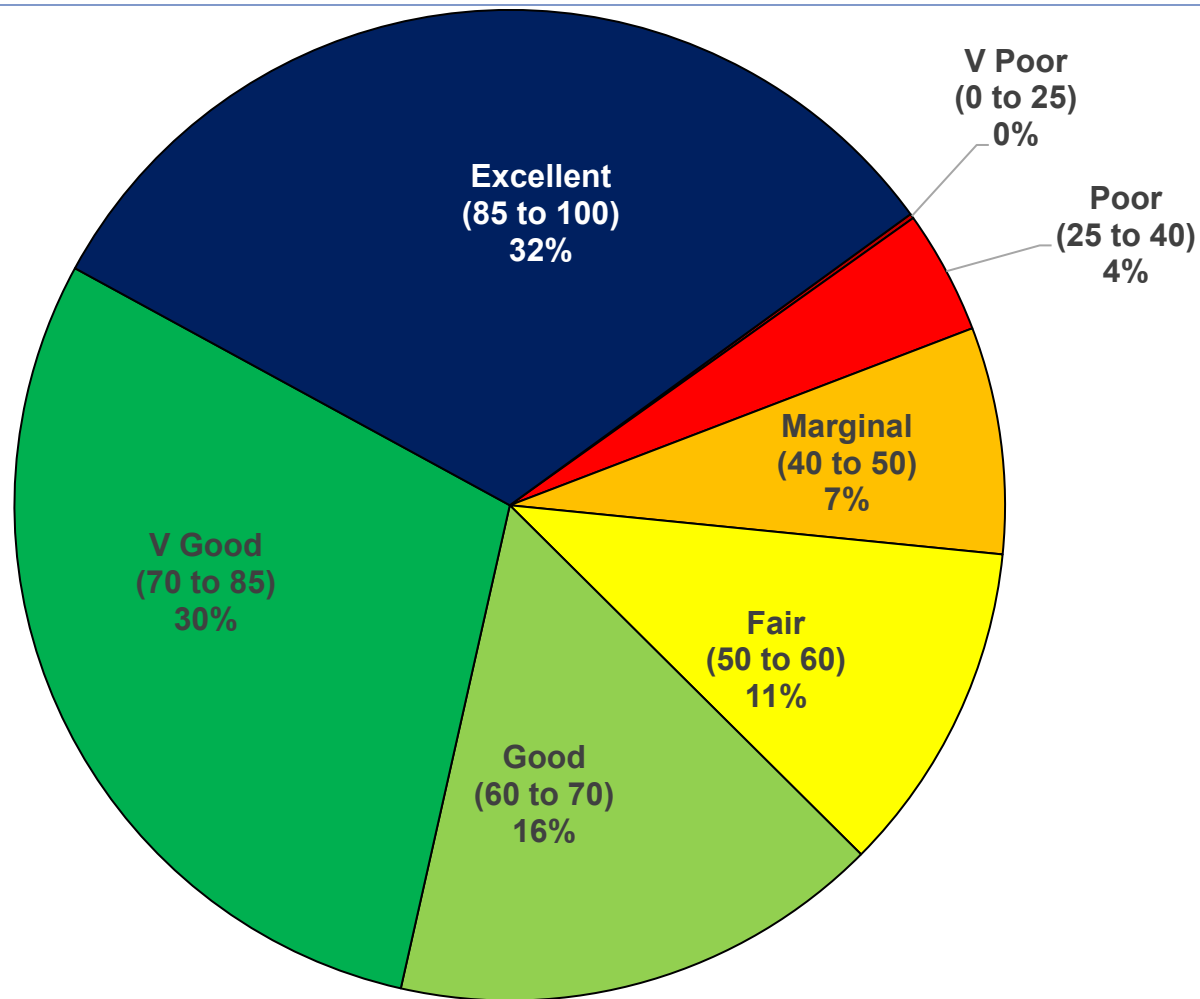
**Excellent (PCI 85 -
100)
32% of the network**

**Mike Padgett Highway
from Doug Barnard
Parkway to Allen
Station
(GISID 65300, PCI = 98)
Few to no detectable
distresses.**

Overview of Pavement Conditions



2025 Pavement Conditions



Centerline Miles:
1326

2022

2025

Network Average
PCI in 2022: 52

+22

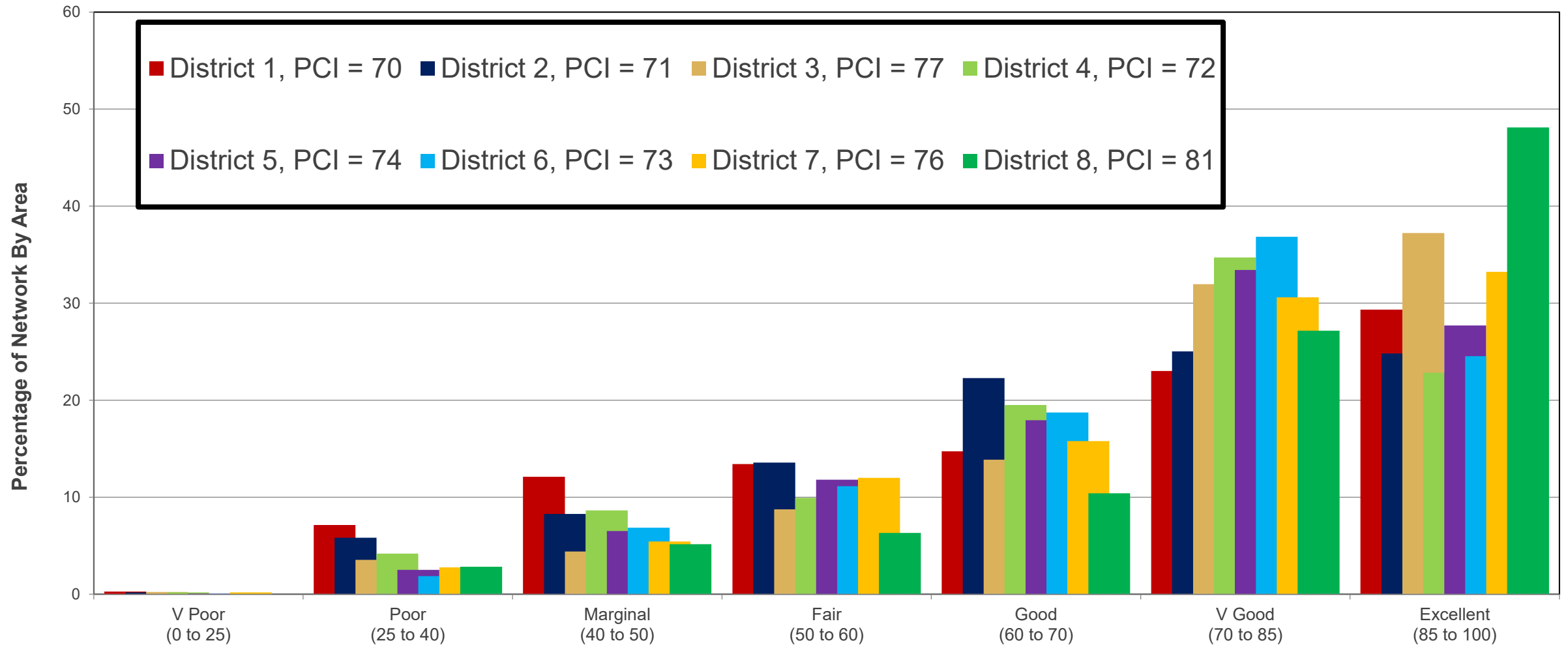
Network
Average PCI: 74

Backlog in 2022:
21%

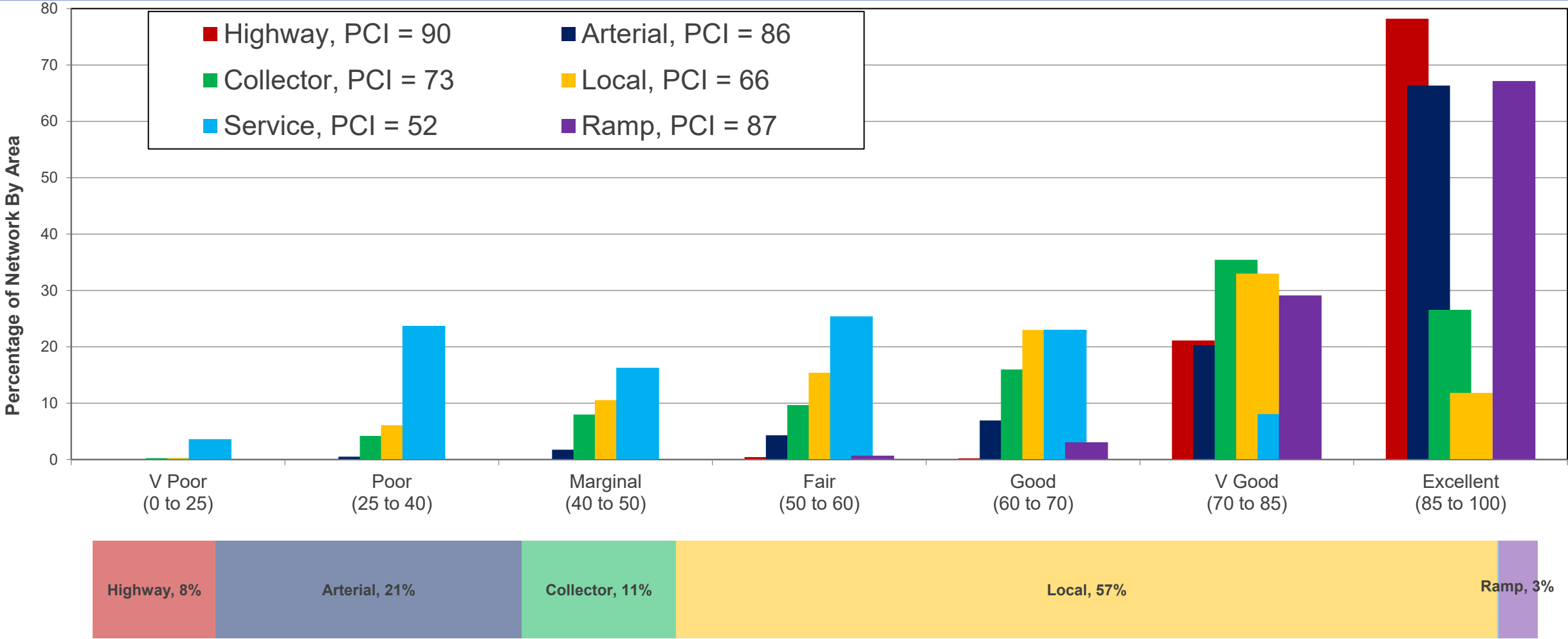
-17

Backlog: 4%

2025 Pavement Conditions



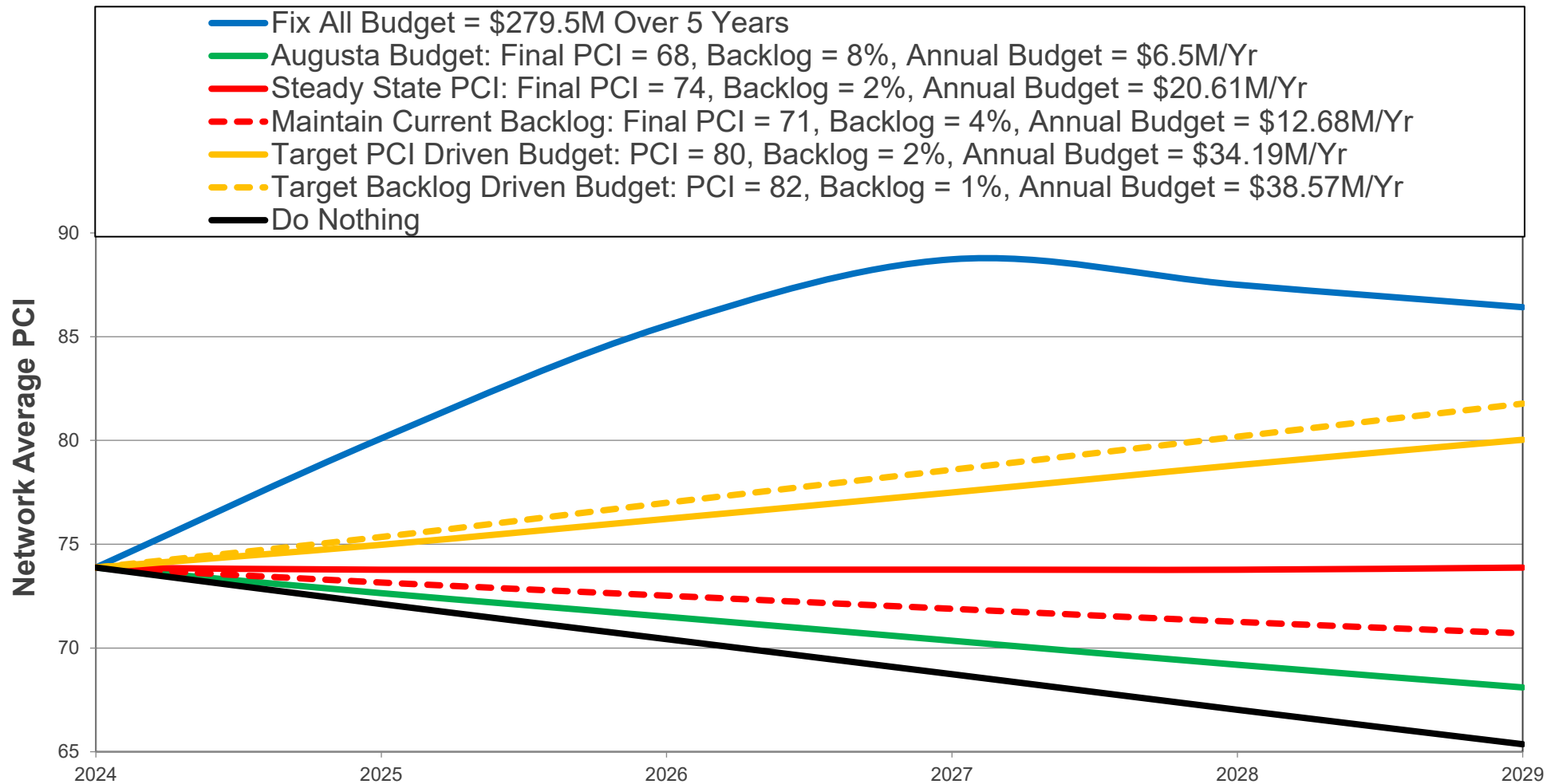
2025 Pavement Conditions Per Functional Class



Analysis and Project Planning



2025 5-Year Funding Models



Target PCI:
PCI = 80, \$34.19M/Yr.

Target Backlog:
Backlog = 1%, \$38.57M/Yr.

Steady State PCI:
PCI = 74, \$20.61M/Yr.

Steady State Backlog:
Backlog = 4%, \$12.68M/Yr.

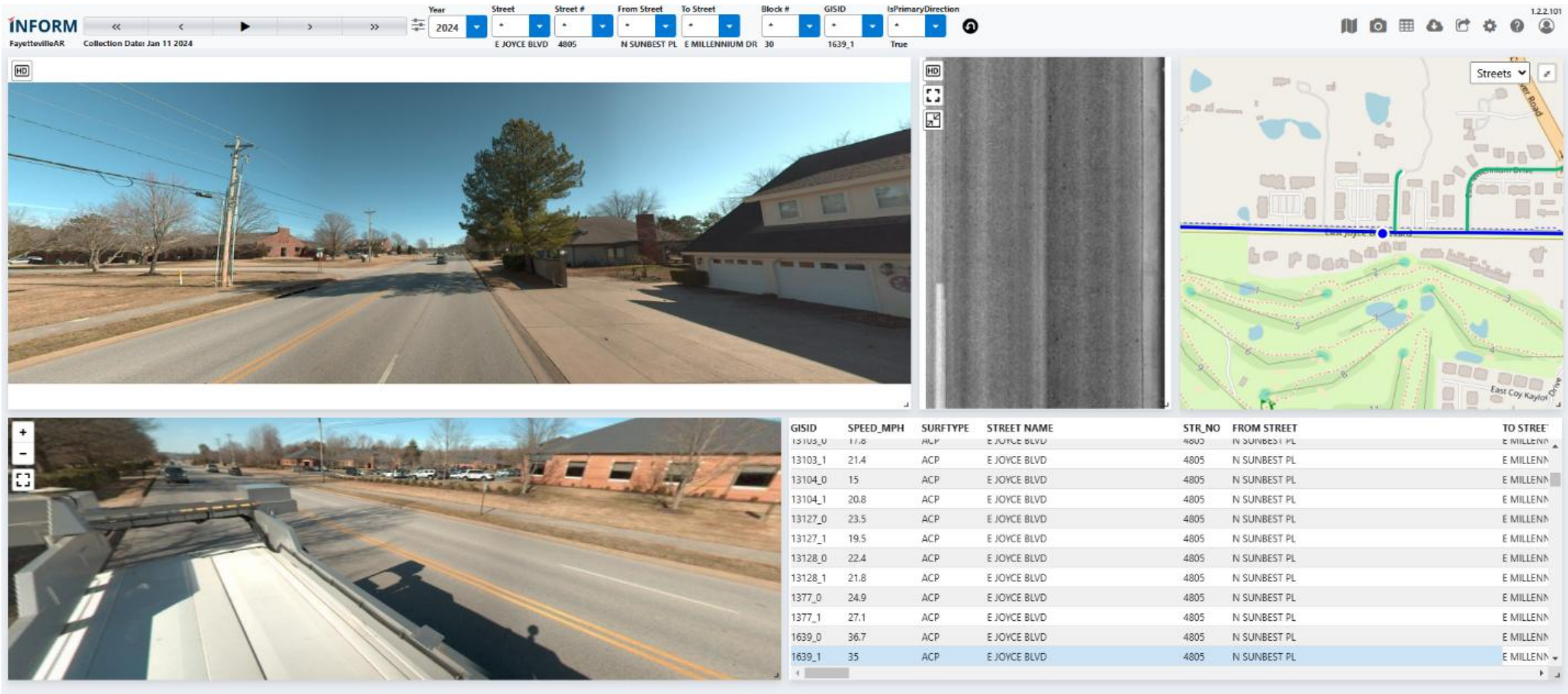
Augusta Budget: \$6.5M/Yr.
PCI = 68, Backlog = 8%

Pavement Analysis Recommendations



- **Focus on district and functional class needs for prioritizing treatments.**
 - **Districts 1 and 2 have the lowest average PCI**
 - **Service roads have a lower PCI than other functional classes but only account for 3% of the network.**
- **Augusta should allocate a percentage of their budget to preservation techniques.**
 - **Each district has an average PCI of 70 or above, placing them in the ideal range for preservation treatments such as slurry seals and microsurfacing.**
- **Augusta should try to maintain or improve current conditions.**
 - **Maintaining a pavement network in good condition is more cost-effective than restoring conditions after deterioration.**

Data Visualization (Inform)





Thank You

Marcial Mota

+1 334 354 1701

mmota@icc-ims.com

icc-ims.com

