

Proposed ARPD Decision Support System (DSS) for Underutilized Park Facilities



Augusta
GEORGIA
RECREATION & PARKS


Infrastructure Systems
Management, LLC
SPECIALIZED CONSULTING SERVICES

Agenda

- Problem Statement and Background
 - Methodology
- Current Project Status and Schedule
- Discussions, Comments, and Questions

Problem Statement and Background

- Currently, Augusta Recreation and Parks Department (ARPD) has over seventy-four (74) Park Locations throughout the County.
- To bring these Facilities to current standards and maintain them properly for the first year would cost an estimated \$22 million.
- On the average ARPD is allocated \$1.2 million per year for maintenance.
- Given the past and current maintenance funding for Park Facilities, and the rising construction and maintenance cost, the current financial situation is not sustainable. It is essential to determine which Parks are being Utilized and/or Underutilized for Short and Long-Term planning, Future SPLOSTs Projects, Annual Maintenance Budgeting, and Administration and Commission Decision-Making purposes.

Methodology

The ARPD/ISM Team has studied and determined that the following Factors should be Variables when making Financial Decisions on Park Facilities:

1) Estimated Annual Maintenance Cost per Facility.

2) Park Classification.

- a. Mini Park – MP
- b. Neighborhood Park – NP
- c. Community Park – CP
- d. Regional Park – RP
- e. Special Purpose Facility – SPF

3) Condition of Park Facility

- a. Good
- b. Fair
- c. Poor

Methodology

4) Proximity to Other Parks (Distance to park in radius miles).

- a. 0.50 miles
- b. 0.75 miles
- c. 1.00 miles

5) Park Size.

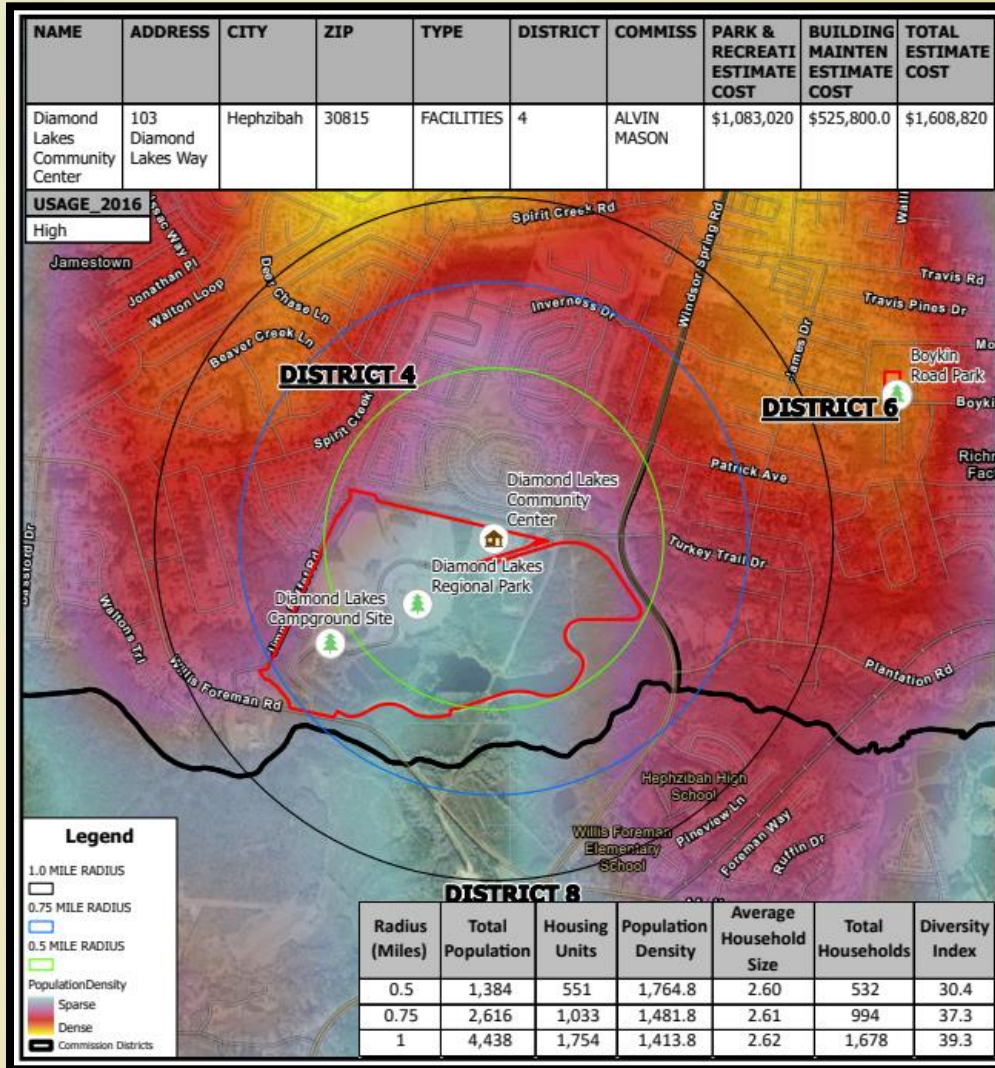
- a. ≤ 1 acre
- b. 1- 5 acres
- c. 5-10 acres
- d. 10-20 acres
- e. ≥ 20 acres

6) Park Usage.

- a. High – (67% to 100%)
- b. Medium – (33% to 67%)
- c. Low – (0% to 33%)

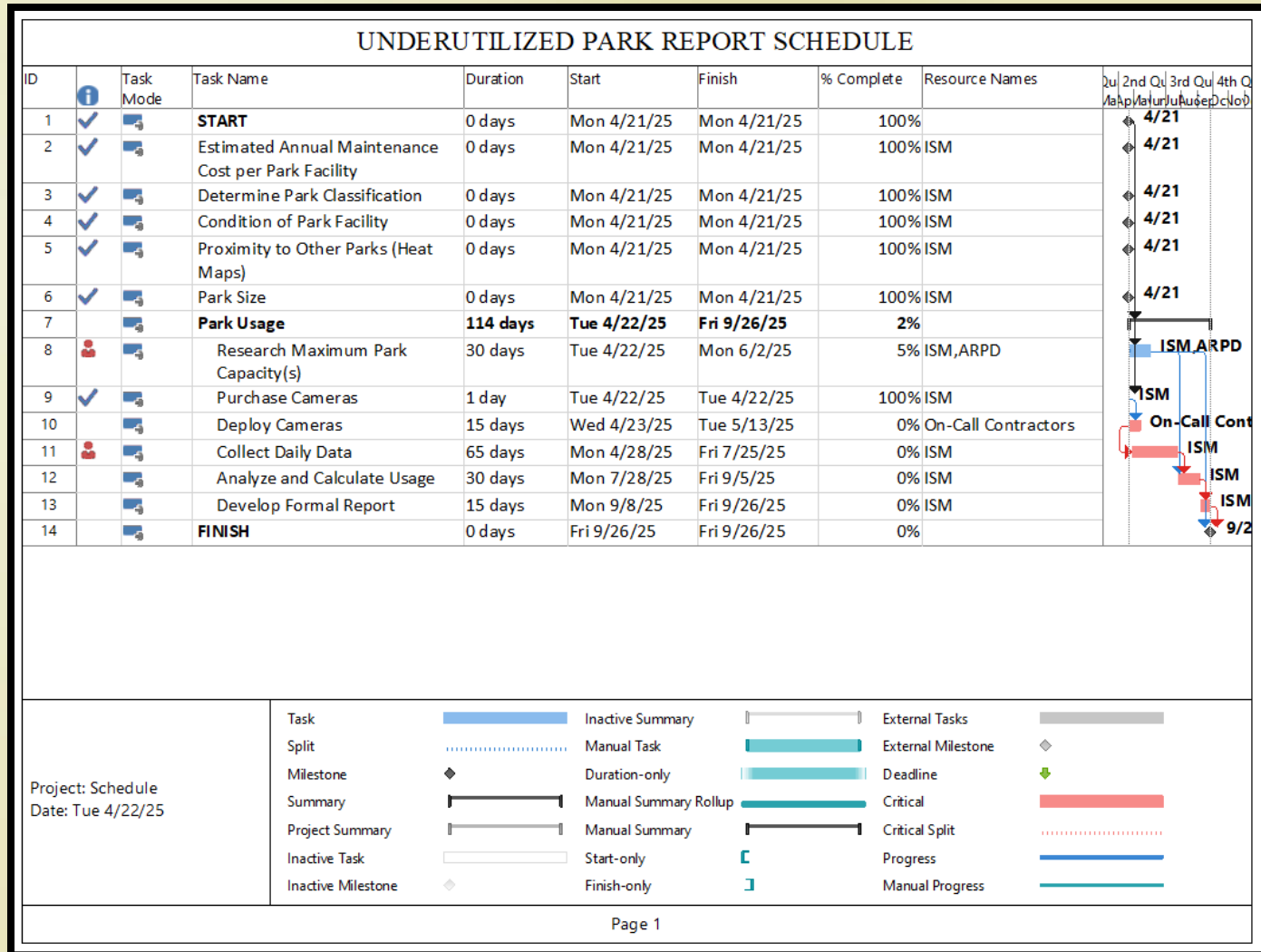
Methodology

EXAMPLE: Diamond Lakes Regional Park



INDEPENDENT VARIABLE(S)		
NO.	PARK CLASSIFICATION	POINTS
1	Mini Park	0
2	Neighborhood Park	5
3	Community Park	15
4	Regional Park	25
5	Special Purpose Facility	35
NO.	CONDITION OF PARK	POINTS
1	Poor	1
2	Fair	2
3	Good	3
NO.	PROXIMITY TO OTHER PARKS	POINTS
1	<= 0.5 Miles	3
2	0.50 Miles to 0.75 Miles	6
3	0.75 Miles to 1 Miles	9
4	>= 1 Mile	12
NO.	PARK SIZE	POINTS
1	<= 1 Acre	1
2	1 - 5 Acres	2
3	5 - 10 Acres	3
4	10 - 20 Acres	4
5	>= 20 Acres	5
NO.	PARK USAGE	POINTS
1	Low (0% - 33%)	5
2	Medium (33% - 67%)	25
3	High (67% - 100%)	45
DEPENDENT VARIABLE(S)		
NO.	UNDERUTILIZED PARK	POINTS
1	Utilized Park (60 - 100)	89
2	Underutilized Park (11 - 59)	
Maximum Points Possible:		100
Minimum Points Possible:		10

Current Project Status and Schedule



Discussion, Comments, and Questions