

### **Emergency request for a landfill-specific hydroseeder for Augusta Landfill**

Augusta Engineering and Environmental Services Department is in need of a landfill hydroseeder to stabilize vegetation on the entire landfill site. This need is an emergency response in an effort to remain within compliance with the stormwater discharge permit with the State of Georgia. The site was exceeding permit limits for turbidity before Augusta Engineering and Environmental Services Department was consolidated. Turbidity exceedances resulted from no erosion and sedimentation control practices on vast portions of the site (borrow pit, closed Phase 2 cells, temporary covered areas of active cell) and no long-term plan to proactively manage vegetation (overseeding) on closed phase areas of the site. In addition to noncompliance, lack of a long-term, proactive erosion and sedimentation control plan, that includes vegetation for stabilization, results in considerable revenue loss to the department in the form of reactive efforts to clean up sediment from detention ponds and stormwater after major rain events and to repeatedly restabilize outside slopes of the active landfill that have no vegetative stabilization once covered but within the 3 month compliance requirement. Augusta Engineering and Environmental Services Department is in need of the landfill specific hydroseeder (Finn LF-120) on an emergency basis to remain within permit compliance and to reduce costs associated with reactive erosion and sedimentation issues.

# Landfill Machine | Model LF120



LF120 Landfill Machine Straight Pull Trailer

The FINN LF120 Landfill Machine is a real workhorse with a 1,000 gallon working tank capacity. FINN developed HydroSeeder® technology in 1953. We've been the industry leader in quality and innovation ever since. With the FINN LF120, you don't have to settle for less than proven FINN quality to tackle a wide range of highly demanding hydroseeding applications.

## Power To Spare.

The LF120 provides muscle with a rugged and dependable 35.1 hp, 3 cylinder water cooled Yanmar Tier 4Final diesel engine. The LF120 Landfill Machine covers up to 1/5 of an acre with one full tank. Tower discharge distance reaches up to 180 feet for greater slurry application and efficient coverage. In addition, the LF120 is equipped with full deck railing and plenty of storage capacity to carry extra materials.

## Positive Control.

The FINN LF120 Landfill Machine features a heavy-duty agitator driven by a variable speed, reversible hydraulic motor. The agitator and pump are independently driven, allowing for complete mixing of the slurry without pump operation, and FINN's direct drive clutch and pump assembly are specifically designed to optimize horsepower efficiency and maximize pump performance.

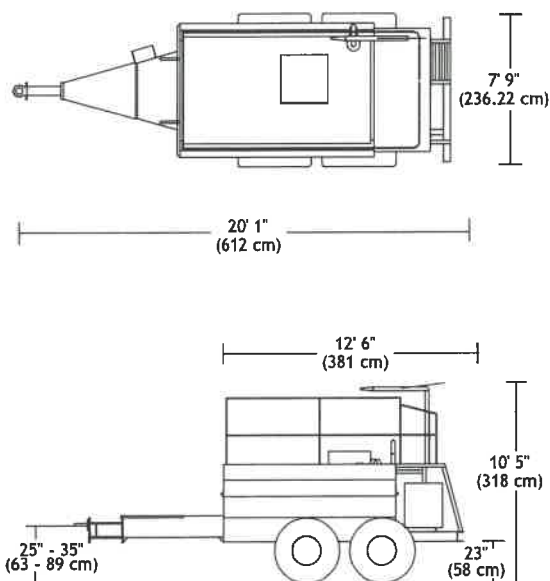
Other features include independent rubber torsion suspension axles and a direct drive clutch with an adjustable external wear plate.

As the world leader for over 80 years in the design and manufacture of innovative, quality equipment for the green industry, and as the inventor of the HydroSeeder, FINN Corporation is committed to your complete satisfaction.

# Landfill Machine

## Model LF120

### LF120 STRAIGHT PULL TRAILER



### FINN MODEL LF120 TECHNICAL SPECIFICATIONS

POWER.....	Yanmar 3TNV88C-DYEM, 35.1 hp (26.2 kw) 3-cylinder water cooled diesel engine, Tier 4Final. 1.642L
ENGINE SAFETY..... SYSTEM	Low oil pressure, electronic engine control and monitoring
TANK SIZE .....	1,180 gallon (4,468 liter) liquid capacity, 1,000 gallon (3,785 liter) working capacity
FUEL TANK..... CAPACITY	13.5 gallon (51.1 liter)
PUMP .....	Centrifugal 4" x 2" (10 cm x 5 cm) 170 gpm @ 100 psi, (646 lpm @ 7 kg/cm <sup>2</sup> ), 3/4" (1.9 cm) solid clearance, external adjustment
PUMP DRIVE .....	Direct drive with over center clutch, pump drive is independent of agitator operation
AGITATION.....	Mechanical paddle agitation and liquid recirculation
AGITATOR DRIVE.....	Reversible, variable speed hydraulic motor drive (0-100 rpm)
DISCHARGE..... DISTANCE	Up to 180 feet (55 m) from end of discharge tower
MAX. MATERIAL..... CAPACITY	3,200 lbs. (1,450 kg) granular solids, 500 lbs. (225 kg) fiber mulch
NOZZLES.....	(1) narrow fan, (1) wide fan, (2) long distance
EMPTY WEIGHT.....	6,660 lbs. (3,021 kg)
WORKING WEIGHT* .....	18,377 lbs. (8,336 kg)
TIRES.....	Hi flotation agricultural 16.5L -16.1 SL tubeless with wide tread design and large footprint
TRAILER AXLES.....	High clearance heavy duty tandem 10,000 lbs. (4,545 kg) rubber torsion

\*Working weights are approximate and do not include options or stored materials. Working weights assume maximum tank liquid capacity and maximum granular solids material capacity.

FINN Corporation has a policy of continuous product improvement, and reserves the right to change design and specifications without notice.

HydroSeeder® and the FINN Design® Logo are registered trademarks of FINN Corporation.

Quote Id: 28032794

---

Prepared For:

**AUGUSTA RICHMOND CNTY LANDFILL**

# **DOBBS**

---

## **EQUIPMENT**

Prepared By: **RICHARD ELLIOTT**

Dobbs Equipment  
1900 William Few Parkway  
Grovetown, GA 30813

Tel: 706-855-5440

Fax: 706-855-5447

Email: [richard.elliott@dobbsequipment.com](mailto:richard.elliott@dobbsequipment.com)

Date: 09 January 2023

Offer Expires: 31 January 2023

---

*Confidential*

---

**Quote Summary****Prepared For:**

AUGUSTA RICHMOND CNTY LANDFILL  
4330 DEANS BRIDGE RD  
BLYTHE, GA 30805  
Business: 706-592-3200

**Prepared By:**

RICHARD ELLIOTT  
Dobbs Equipment  
1900 William Few Parkway  
Grovetown, GA 30813  
Phone: 706-855-5440  
richard.elliott@dobbsequipment.com

---

**Quote Id:** 28032794  
**Created On:** 09 January 2023  
**Last Modified On:** 09 January 2023  
**Expiration Date:** 31 January 2023

---

Equipment Summary	Selling Price	Qty	Extended
2023 FINN LF120 - 1	\$ 114,606.00 X	1 =	\$ 114,606.00
<b>Equipment Total</b>			<b>\$ 114,606.00</b>

---

**Quote Summary**

Equipment Total	\$ 114,606.00
SubTotal	\$ 114,606.00
Total	\$ 114,606.00
<b>Balance Due</b>	<b>\$ 114,606.00</b>

Salesperson : X \_\_\_\_\_

Accepted By : X \_\_\_\_\_