

**AMENDMENT NO: 01  
TO AGREEMENT  
BETWEEN  
OWNER AND ENGINEER**

This Amendment No: 01 is made and entered into this \_\_\_ day of \_\_\_\_\_, 2022 to the Agreement between CDM Smith Inc. (CDM Smith) ("ENGINEER") and City of Augusta, GA Utilities Department ("OWNER") dated December 12, 2019, ("the Agreement").

WHEREAS, ENGINEER and OWNER entered into the Agreement for the Sanitary Swer Hydraulic Modeling services, and

WHEREAS, the parties desire to amend the Agreement so as to amend the scope of work, time periods of performance and payment, and/or responsibilities of OWNER; and

WHEREAS, the Agreement provides that any amendments shall be valid only when expressed in writing and signed by the parties.

NOW THEREFORE, in consideration of the mutual understandings and Agreements contained herein, the parties agree to amend the Agreement as follows:

1. The Basic Services of ENGINEER as described in the Agreement are amended and supplemented as follows:

CDM Smith will update and extend the dynamic hydraulic model developed as part of the 2022 Sanitary Sewer Hydraulic Model Project. CDM Smith will use the planned improvement model scenario, which includes the Rocky Creek pump station improvements, as a basis for this task. Per Figure 1, the model will be extended to include the gravity sewer pipes highlighted in orange and yellow in the Fort Gordon Area. Augusta Utilities Department (AUD) will provide as-built drawing information for the gravity sewer highlighted in orange in Figure 1. The pipes highlighted in yellow in Figure 1 will be based on manhole rim and invert elevation data, pipe invert elevations and slope from the AUD GIS. Areas, where missing or inconsistent invert information is identified in the GIS (or invert information is not consistent with upstream and downstream pipes) will be interpolated based on known inverts, or a minimum slope will be assumed.

For the 2022 Sanitary Sewer Hydraulic Model Project, CDM Smith developed a peaking factor approach to model wet-weather flows based on AUD's input. CDM will use the same analysis to re-distribute dry- and wet-weather flows from the existing model to the expanded model. CDM Smith will perform a dry- and wet-weather capacity analysis for the expanded model areas. The sewer capacity analysis will be presented as maps illustrating predicted overflows, surcharged pipes, and the percent full pipe capacity during existing conditions.

CDM Smith will prepare a technical memo documenting the model expansion and expanded capacity analysis.

2. The responsibilities of OWNER as described in the Agreement are amended and supplemented as follows:

No change.

3. The time periods for the performance of ENGINEER's services as set forth in the Agreement are amended and supplemented as follows:

See attached schedule.

4. The payment for services rendered by ENGINEER shall be as set forth below:

For services performed under this Task Order, the Engineer agrees to pay the Subconsultant Lump Sum not exceeding **\$47,820**. The table below summary the cost.

<u>TASK</u>	<u>DESCRIPTION</u>	<u>COST</u>
Task1	Project Management and Billing	\$5,880
Task2	Update Model with As-Builts	\$9,810
Task3	Update Model with GIS	\$10,490
Task4	Model Capacity Analysis	\$5,610
Task5	QA/QC & Base Model Documentatio	\$6,035
Task6	TM & Meetings to Discuss Results	\$9,995
	Total	<u>\$47,820</u>

5. Except as herein modified, all terms and conditions of the Agreement shall remain in full force and effect.

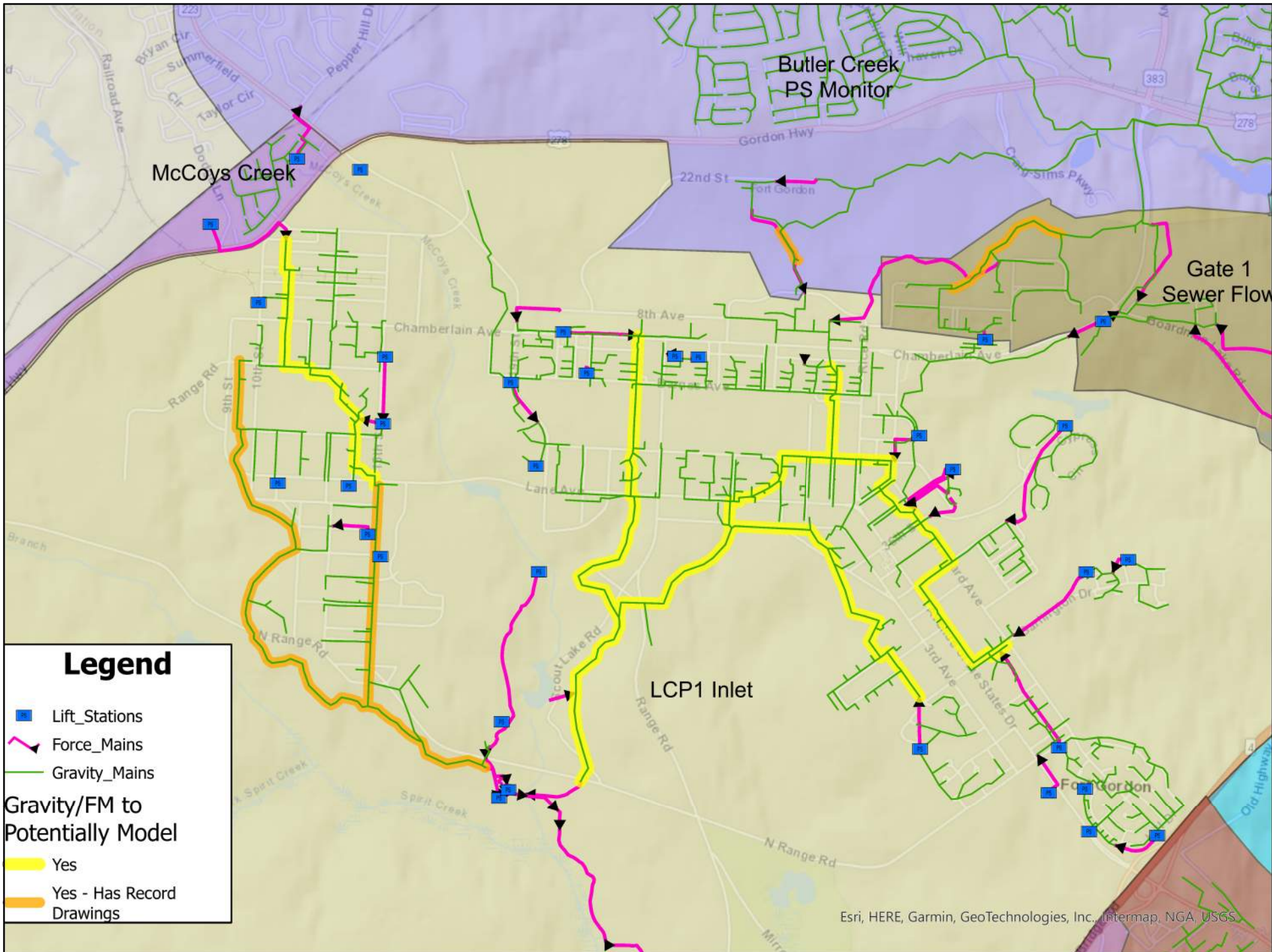
IN WITNESS WHEREOF, the parties hereto have executed this amendment on the date indicated above for the purpose herein expressed.

\_\_\_\_\_  
ENGINEER

DATE:

\_\_\_\_\_  
OWNER

DATE:



**Legend**

- Lift\_Stations
  - ▲ Force\_Mains
  - Gravity\_Mains
- Gravity/FM to Potentially Model
- Yes
  - Yes - Has Record Drawings

ID	Task Mode	Task Name	Duration	Start	Finish	Predecessors	Timeline																							
							January	February	March	April																				
1		NTP	0 days	Mon 1/9/23	Mon 1/9/23		1/1	1/8	1/15	1/22	1/29	2/5	2/12	2/19	2/26	3/5	3/12	3/19	3/26	4/2	4/9	4/16	4/23							
2		Task 1 - Project Management/Coordination	15 wks	Mon 1/9/23	Fri 4/21/23	1																								
3		Task 2 - Update Model with As-Builts	4 wks	Mon 1/9/23	Fri 2/3/23	1																								
4		Task 3 - Update Model with GIS	5 wks	Mon 1/30/23	Fri 3/3/23	3FS-1 wk																								
5		Task 4 - Model Capacity Analysis	2 wks	Mon 3/6/23	Fri 3/17/23	4																								
6		Task 5 - QA/QC & Base Model Documentati	4 wks	Mon 3/13/23	Fri 4/7/23	5FS-1 wk																								
7		Task 6 - TM & Meetings to Discuss Results	4 wks	Mon 3/27/23	Fri 4/21/23	6FS-2 wks																								

Project: Augusta Fort Gordon S  
Date: Thu 12/1/22

Task		Project Summary		Manual Task		Start-only		Deadline	
Split		Inactive Task		Duration-only		Finish-only		Progress	
Milestone		Inactive Milestone		Manual Summary Rollup		External Tasks		Manual Progress	
Summary		Inactive Summary		Manual Summary		External Milestone			