





- Legend**
-  Proposed Access Road
 -  Proposed Multi-Use Trail
 -  Proposed Pedestrian Bridge
 -  Parcel Data

MAPPING SOURCE:
Augusta-Richmond County GIS

RIVERWATCH MULTI-USE TRAIL AND CANAL PEDESTRIAN BRIDGE

DATE: 2/27/2023

CHECKED: WPM

2:29

5G

31



Owner, address, or parcel ID



STORE MASTER FUNDING XIII LLC

Owner

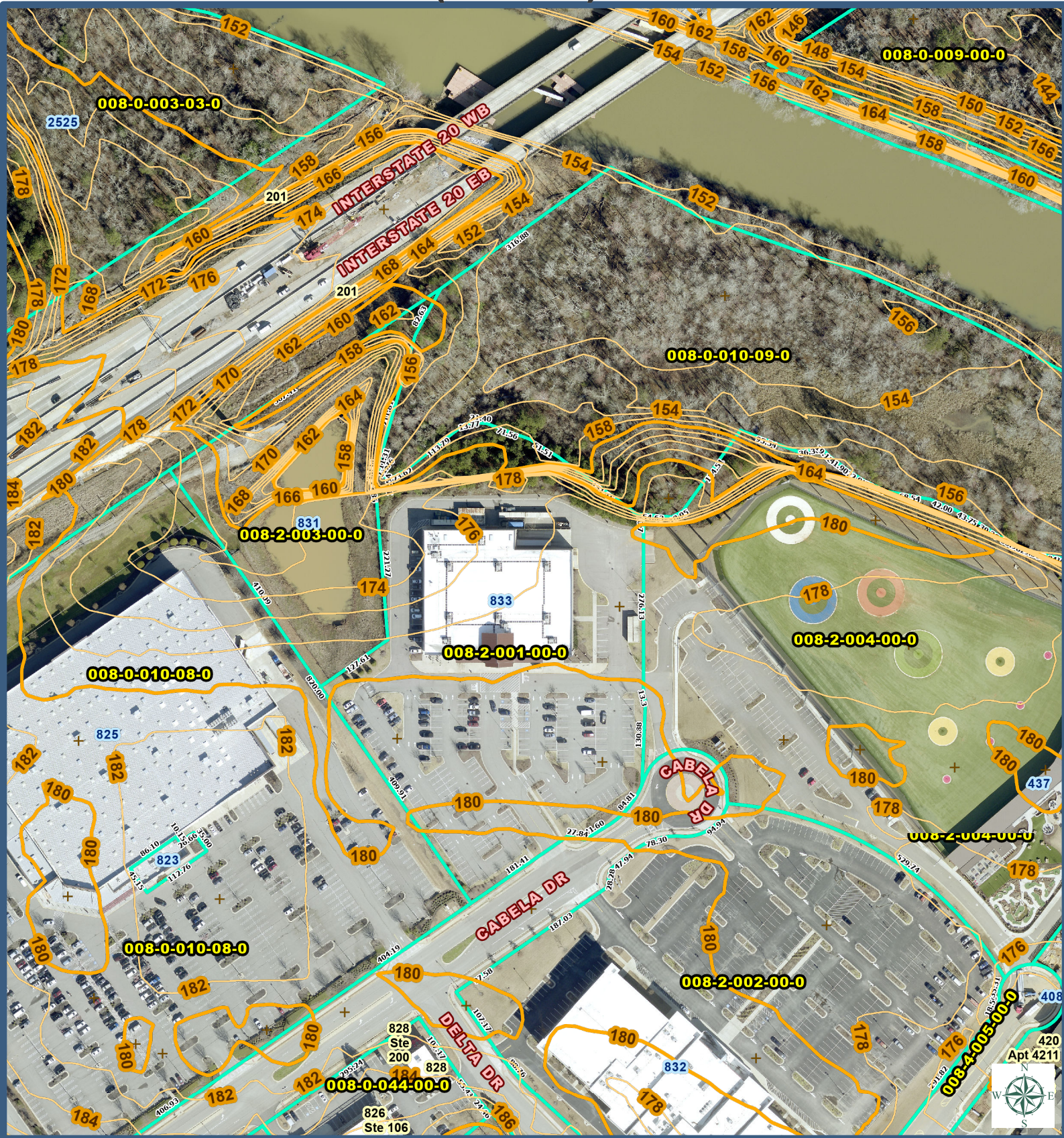
833 Cabela

Address

008-2-001-00-0

Parcel ID

Letter (8.5x11) Portrait



Legend

Augusta, GA Disclaimer

Augusta
GEORGIA

IT Department - GIS Division
535 Telfair St Bldg 2000 | Augusta, GA 30901
www.augustaga.gov/gis | gis@augustaga.gov

Map Scale
1:2,400

Print Date
Apr 9, 2024

The data represented on this map has been compiled by the best methods available. Accuracy is contingent upon the source information as compiled by various agencies and departments both internal and external to the consolidated government of Augusta, GA. Augusta, GA and the companies contracted to develop these data assume no legal responsibilities for the information or accuracy contained on this map. It is strictly forbidden to sell or reproduce these maps or data for any reason without the written consent of the Augusta Commission.