

PHASE 1:

Site Costs	\$2,390,000
Building Costs	\$8,087,520
Garage Equipment & FFE	\$570,000
Soft Costs	\$920,000
Total	\$11,967,520¹

¹Excludes contingency & cost escalation is dependent on time.

Proposed Shared Heavy Duty Bldg:²

20 x 55 Bays: 13 HD Bays

²Bays are sized for proper vehicle maintenance

Existing Maintenance Bay Summary:³

Fleet Tobacco Rd. Site: 11 HD Bays

Fire Dept Site: 8 Bays

Total Exist HD Bays: 19 Bays

³Bays are undersized for proper vehicle maintenance

EXISTING

1568 Broad Street

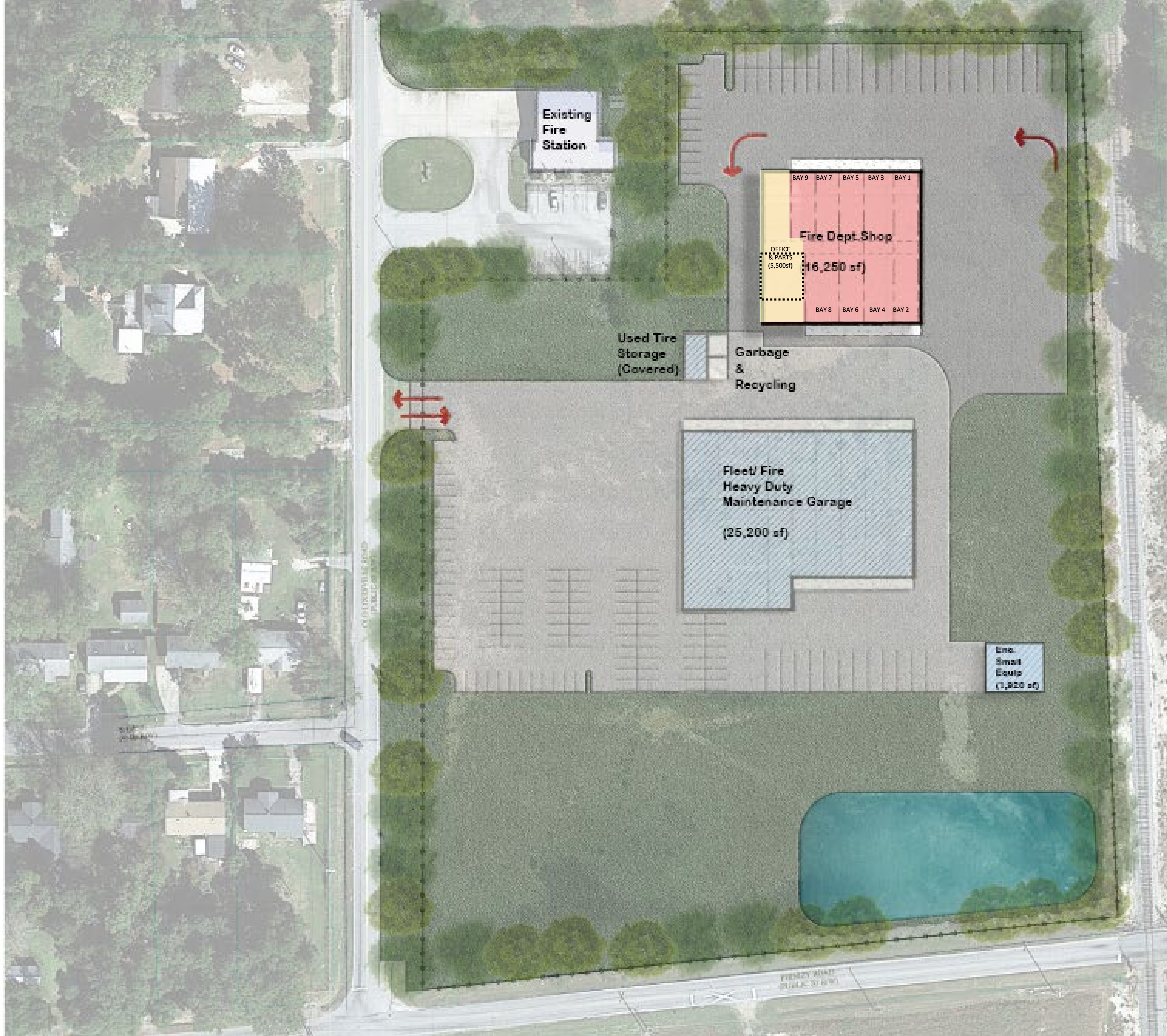
Light Duty Shop 13,300sf

Admin 720sf

Parts & Storage 3,116sf

2316 Tobacco Road

Heavy Duty Shop 14,770sf



PHASE 2:

Site Costs	\$840,000
Building Costs	\$5,370,000
Garage Equipment & FFE	\$540,000
Soft Costs	\$570,000
Total	\$7,320,000¹

¹Excludes contingency & cost escalation is dependent on time.

Maintenance Bay Summary:²

20 x 55 Bays:	7 Bays
25 x 55 Hydraulic Bays	2 Bays

²Bays are sized for proper vehicle maintenance

Combined with Phase 1³

Total Fleet Site:	13 HD Bays
Total Fire Site:	2 Bays

³Bays are sized for proper vehicle maintenance

Meets Original 10 Yr Needs

EXISTING

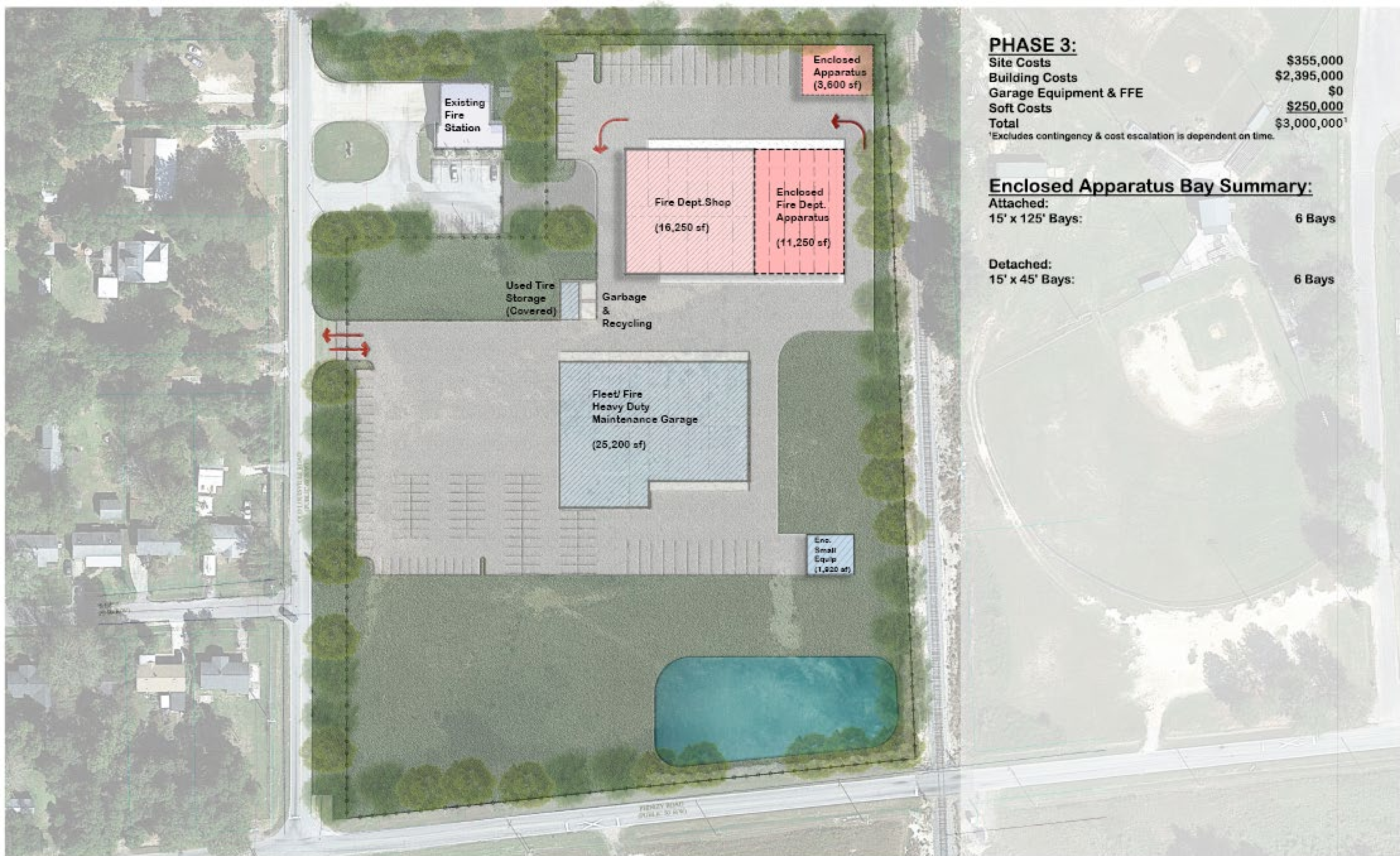
1568 Broad Street

Light Duty Shop	13,300sf
Admin	720sf
Parts & Storage	3,116sf

2316 Tobacco Road

Heavy Duty Shop	14,770sf
-----------------	----------

VEHICLE FLEET SERVICE CENTER



PHASE 3:

Site Costs	\$355,000
Building Costs	\$2,395,000
Garage Equipment & FFE	\$0
Soft Costs	\$250,000
Total	\$3,000,000¹

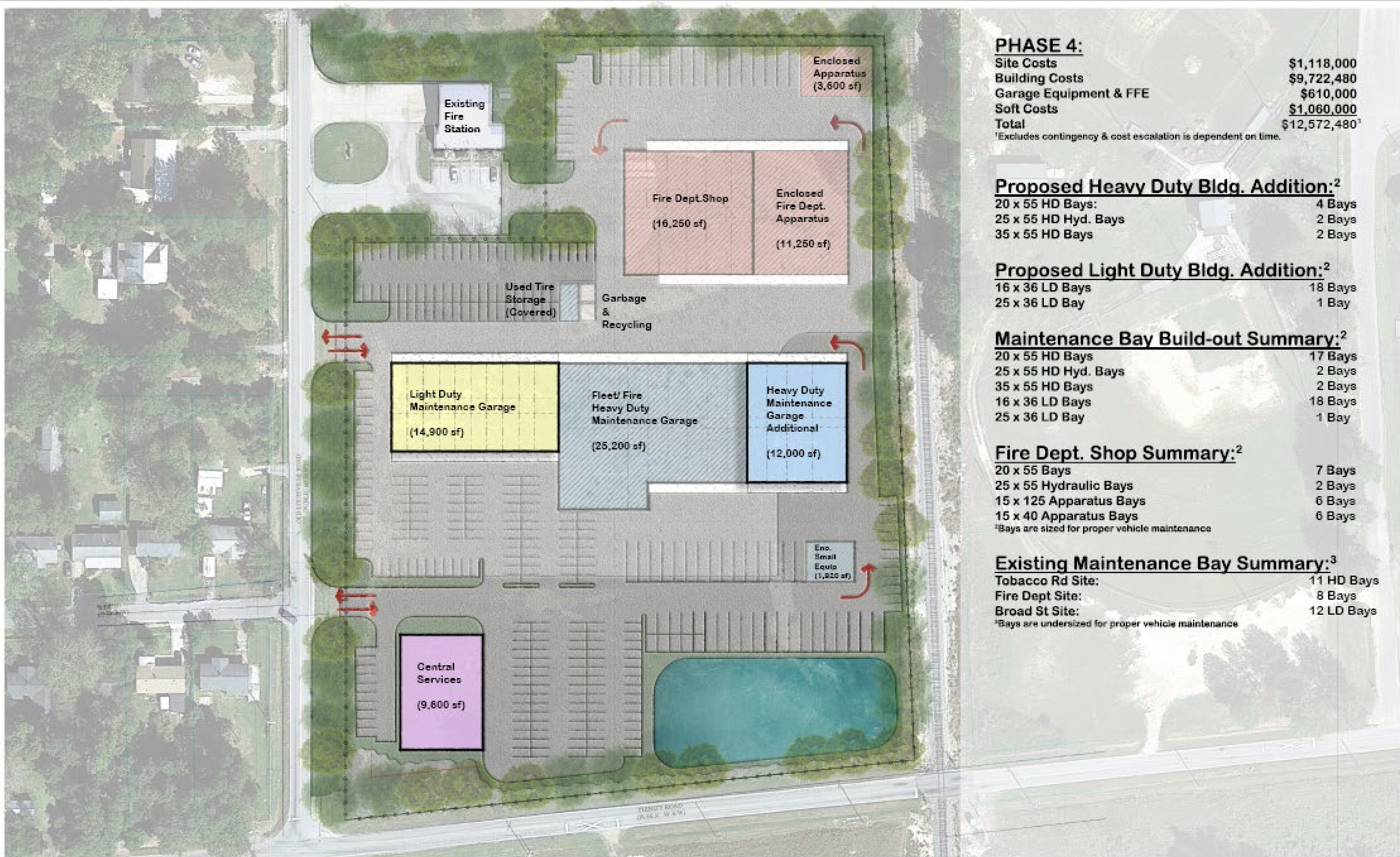
¹Excludes contingency & cost escalation is dependent on time.

Enclosed Apparatus Bay Summary:

Attached:
15' x 125' Bays: 6 Bays

Detached:
15' x 45' Bays: 6 Bays

VEHICLE FLEET SERVICE CENTER



PHASE 4:

Site Costs	\$1,118,000
Building Costs	\$9,722,480
Garage Equipment & FFE	\$610,000
Soft Costs	\$1,060,000
Total	\$12,572,480¹

¹Excludes contingency & cost escalation is dependent on time.

Proposed Heavy Duty Bldg. Addition:²

20 x 55 HD Bays:	4 Bays
25 x 55 HD Hyd. Bays	2 Bays
35 x 55 HD Bays	2 Bays

Proposed Light Duty Bldg. Addition:²

16 x 36 LD Bays	18 Bays
25 x 36 LD Bay	1 Bay

Maintenance Bay Build-out Summary:²

20 x 55 HD Bays	17 Bays
25 x 55 HD Hyd. Bays	2 Bays
35 x 55 HD Bays	2 Bays
16 x 36 LD Bays	18 Bays
25 x 36 LD Bay	1 Bay

Fire Dept. Shop Summary:²

20 x 55 Bays	7 Bays
25 x 55 Hydraulic Bays	2 Bays
15 x 125 Apparatus Bays	6 Bays
15 x 40 Apparatus Bays	6 Bays

²Bays are sized for proper vehicle maintenance

Existing Maintenance Bay Summary:³

Tobacco Rd Site:	11 HD Bays
Fire Dept Site:	8 Bays
Broad St Site:	12 LD Bays

³Bays are undersized for proper vehicle maintenance

VEHICLE FLEET SERVICE CENTER