

MATCH LINE STA. 135+70 DRAWING No. 60-0003

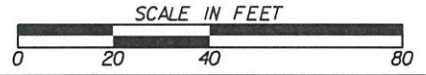
MATCH LINE STA. 141+50 DRAWING No. 60-0005

Curve\* 2 (DE1)  
 PI Sta\* 136+57.95  
 N\* 1266411.1897  
 E\* 714854.8478  
 DELTA\* 3°37'22.6" (LT)  
 D\* 0°57'46.64"  
 T\* 188.18  
 L\* 376.23  
 R\* 5950.00  
 E\* 2.97  
 SE\* 2.0%

NOTE 2:  
 PESMT IS PROVIDED FOR CONSTRUCTION ACCESS TO THE TEMP.  
 WORK BRIDGE TO BE CONSTRUCTED ON THE PROPOSED  
 REQ'D ON PARCEL 016. CONTRACTOR WILL NOT DISTURB  
 THE CONCRETE PARKING PAD AND WOODEN WALKWAY ON PAR. 016.

NOTE 1:  
 SEE ENVIRONMENTAL RESOURCES  
 IMPACT TABLE IN GENERAL NOTES  
 FOR CONSTRUCTION RESTRICTIONS.

Preliminary



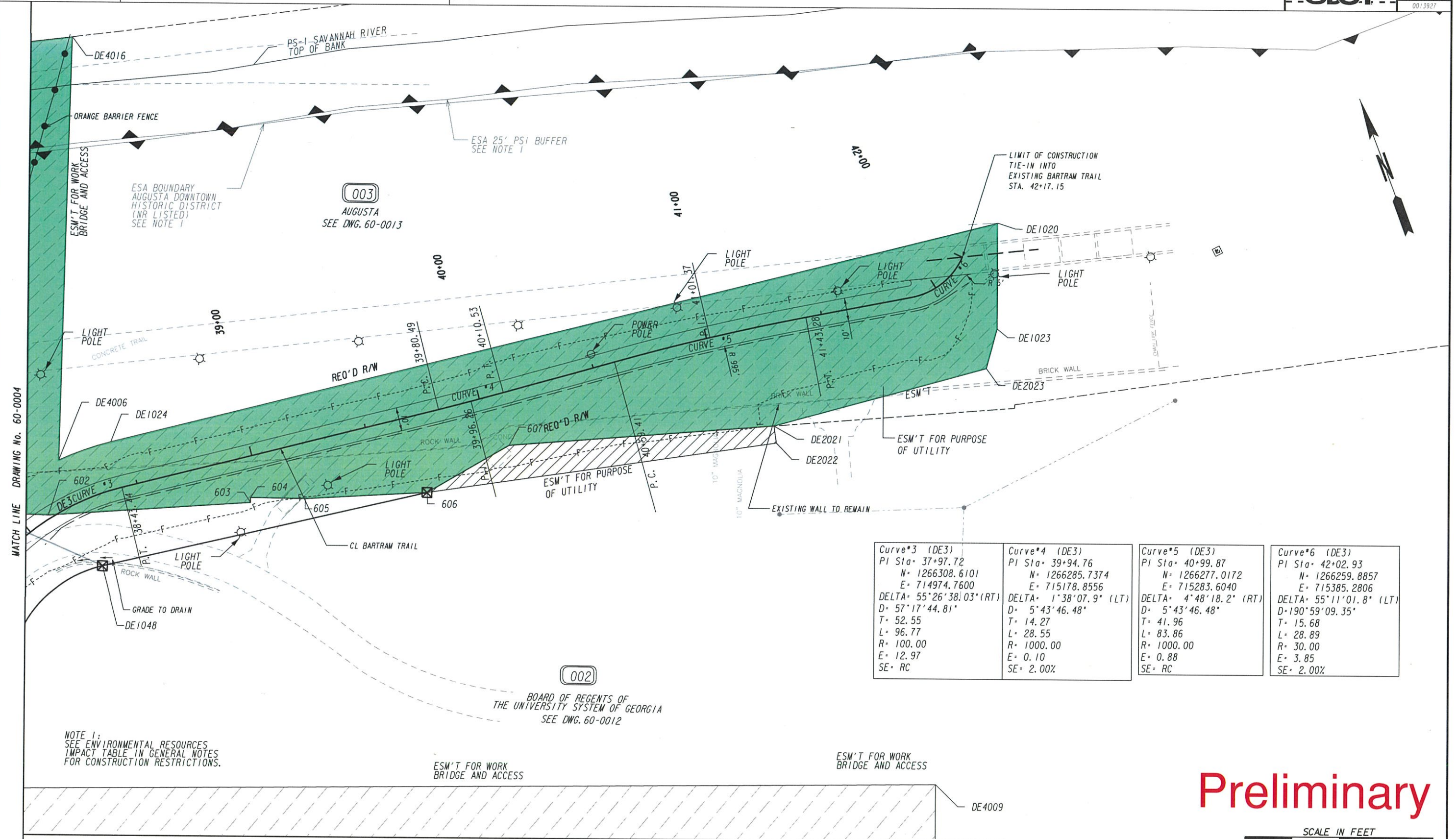
PROPERTY AND EXISTING R/W LINE	---
REQUIRED R/W LINE	---
CONSTRUCTION LIMITS	---
EASEMENT FOR CONSTR & MAINTENANCE OF SLOPES	---
EASEMENT FOR CONSTR OF SLOPES	---
EASEMENT FOR CONSTR OF DRIVES	---

BEGIN LIMIT OF ACCESS.....BLA	---
END LIMIT OF ACCESS.....ELA	---
EXISTING LIMIT OF ACCESS	---
REQ'D LIMIT OF ACCESS	---
EXISTING LIMIT OF ACCESS & R/W	---
REQ'D LIMIT OF ACCESS & R/W	---
ORANGE BARRIER FENCE	---
ESA - ENV. SENSITIVE AREA	---

DATE	REVISIONS	DATE	REVISIONS
5-05-25	ADDED NOTE #2 TO PARCEL 016		
6-27-25	PAR 007 REMOVED REQ'D, ADDED TESMT.		
	PAR 003 REMOVED PESMT & REQ'D, REVISED TESMT.		
12-19-25	PAR 002 REVISED REQ'D R/W		
1-29-26	PAR 002 REMOVED TESMT, ADDED PESMT		
3-25-26	PAR 002 REMOVED PESMT, ADDED TESMT		

STATE OF GEORGIA DEPARTMENT OF TRANSPORTATION	
<b>RIGHT OF WAY MAP</b>	
PROJECT NO: N/A	COUNTY: RICHMOND(GA); AIKEN(SC)
LAND LOT NO: N/A	LAND DISTRICT: 12(GA); 2(SC)
GWD 600	DATE 04/23/24 SH 4 OF 15

DRAWING No.  
**60-0004**

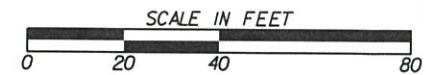


<b>Curve*3 (DE3)</b> PI Sta= 37+97.72 N= 1266308.6101 E= 714974.7600 DELTA= 55°26'38.03"(RT) D= 57°17'44.81" T= 52.55 L= 96.77 R= 100.00 E= 12.97 SE= RC	<b>Curve*4 (DE3)</b> PI Sta= 39+94.76 N= 1266285.7374 E= 715178.8556 DELTA= 1°38'07.9"(LT) D= 5°43'46.48" T= 14.27 L= 28.55 R= 1000.00 E= 0.10 SE= 2.00%	<b>Curve*5 (DE3)</b> PI Sta= 40+99.87 N= 1266277.0172 E= 715283.6040 DELTA= 4°48'18.2"(RT) D= 5°43'46.48" T= 41.96 L= 83.86 R= 1000.00 E= 0.88 SE= RC	<b>Curve*6 (DE3)</b> PI Sta= 42+02.93 N= 1266259.8857 E= 715385.2806 DELTA= 55°11'01.8"(LT) D= 190°59'09.35" T= 15.68 L= 28.89 R= 30.00 E= 3.85 SE= 2.00%
--	--	---	---

NOTE 1:  
SEE ENVIRONMENTAL RESOURCES  
IMPACT TABLE IN GENERAL NOTES  
FOR CONSTRUCTION RESTRICTIONS.

002  
BOARD OF REGENTS OF  
THE UNIVERSITY SYSTEM OF GEORGIA  
SEE DWG. 60-0012

**Preliminary**



PROPERTY AND EXISTING R/W LINE	---
REQUIRED R/W LINE	---
CONSTRUCTION LIMITS	---
EASEMENT FOR CONSTR	---
& MAINTENANCE OF SLOPES	---
EASEMENT FOR CONSTR OF SLOPES	---
EASEMENT FOR CONSTR OF DRIVES	---

BEGIN LIMIT OF ACCESS.....BLA	---
END LIMIT OF ACCESS.....ELA	---
EXISTING LIMIT OF ACCESS	---
REO'D LIMIT OF ACCESS	---
EXISTING LIMIT OF ACCESS & R/W	---
REO'D LIMIT OF ACCESS & R/W	---
ORANGE BARRIER FENCE	---
ESA - ENV. SENSITIVE AREA	---

DATE	REVISIONS	DATE	REVISIONS
6/27/25	PAR 003 REMOVED PESMT & REOD, REVISED TESMT.		
12/19/25	PAR 002 REVISED REO'D R/W		
03/25/26	PAR 002 REMOVED PESMT, ADDED TESMT		

STATE OF GEORGIA DEPARTMENT OF TRANSPORTATION RIGHT OF WAY MAP	
PROJECT NO: N/A	COUNTY: RICHMOND(GA)
LAND LOT NO: N/A	LAND DISTRICT: 12(GA)
GMD 600	DATE 04/23/24 SH 10 OF 15

DRAWING No.  
**60-0010**

**003**  
AUGUSTA  
SEE DWG. 60-0004, 60-0010

PAR 003 AUGUSTA  
REQ'D TEMP. EASMT DE402

PNT	OFFSET/ DIST	STATION/ BEARING	ALIGNMENT
599	47.29 R	136+01.15	SR 4/US 25
622	48.31 R	137+93.19	SR 4/US 25
DE4016	176.51 R	138+09.94	SR 4/US 25
DE4006	20.00 L	38+23.85	DE3/Trail Connection
ARC LENGTH = 23.50			
CHORD BEAR = S 89°12'58.5" E			
LNTH CHORD = 23.46			
RADIUS = 120.00			
DEGREE = 47°44'47.3"			
DE1024	20.00 L	38+43.44	DE3/Trail Connection
DE1020	572.15 R	137+42.32	SR 4/US 25
DE1023	30.25 R	42+06.51	DE3/Trail Connection
DE2023	40.68 R	42+00.02	DE3/Trail Connection
DE2021	42.74 R	41+20.39	DE3/Trail Connection
607	22.37 R	40+06.96	DE3/Trail Connection
606	33.12 R	39+68.79	DE3/Trail Connection
605	23.32 R	39+17.88	DE3/Trail Connection
604	17.23 R	38+95.26	DE3/Trail Connection
603	19.26 R	38+94.72	DE3/Trail Connection
602	1.56 L	38+10.12	DE3/Trail Connection
601	39.16 L	37+78.50	DE3/Trail Connection
600	36.28 L	37+75.90	DE3/Trail Connection
599	47.29 R	136+01.15	SR 4/US 25

REQD EASMT AREA = 45203.71 SF  
REQD EASMT = 1.038 ACRES

**004**  
WSJ 1311 LLC  
SEE DWG. 60-0003

PAR 004 WSJ 1311 LLC REQ'D R/W DE105

PNT	OFFSET/ DIST	STATION/ BEARING	ALIGNMENT
DE1000	54.00 L	131+94.54	SR 4/US 25
DE1001	122.41	N 23°09'13.1" E	SR 4/US 25
	52.01 L	133+15.86	SR 4/US 25
	4.67	S 70°28'39.6" E	SR 4/US 25
609	47.36 L	133+16.13	SR 4/US 25
	112.67	S 23°37'33.4" W	SR 4/US 25
96	50.02 L	132+04.40	SR 4/US 25
ARC LENGTH = 10.87			
CHORD BEAR = S 43°31'29.1" W			
LNTH CHORD = 10.71			
RADIUS = 18.59			
DEGREE = 308°08'36.5"			
DE1000	54.00 L	131+94.54	SR 4/US 25
REQD R/W = 496.09 SF			
REQD R/W = 0.011 ACRES			
REMAINDER = +/- 0.16 ACRES			

PAR 004 WSJ 1311 LLC  
REQ'D EASMT FOR PURPOSE OF UTILITY DE210

PNT	OFFSET/ DIST	STATION/ BEARING	ALIGNMENT
DE2001	52.58 L	132+62.22	SR 4/US 25
	11.00	N 66°52'30.5" W	SR 4/US 25
DE2024	63.58 L	132+62.38	SR 4/US 25
	53.43	N 23°09'13.1" E	SR 4/US 25
DE2025	63.02 L	133+15.24	SR 4/US 25
	11.02	S 70°28'39.6" E	SR 4/US 25
DE1001	52.01 L	133+15.86	SR 4/US 25
	54.12	S 23°09'13.1" W	SR 4/US 25
DE2001	52.58 L	132+62.22	SR 4/US 25
REQD EASMT = 591.50 SF			
REQD EASMT = 0.014 ACRES			

**005**  
WILLIAM S JACKSON JR  
SEE DWG. 60-0003, 60-0009

PAR 005 WILLIAM S JACKSON JR REQ'D R/W DE106

PNT	OFFSET/ DIST	STATION/ BEARING	ALIGNMENT
609	47.36 L	133+16.13	SR 4/US 25
	4.67	N 70°28'39.6" W	SR 4/US 25
DE1001	52.01 L	133+15.86	SR 4/US 25
	69.87	N 23°09'13.1" E	SR 4/US 25
DE1002	52.00 L	133+85.13	SR 4/US 25
	33.68	N 23°39'36.4" E	SR 4/US 25
DE1004	51.99 L	134+18.52	SR 4/US 25
	5.22	S 69°53'56.4" E	SR 4/US 25
611	46.78 L	134+18.85	SR 4/US 25
	103.54	S 23°37'33.4" W	SR 4/US 25
609	47.36 L	133+16.13	SR 4/US 25
REQD R/W = 521.25 SF			
REQD R/W = 0.012 ACRES			
REMAINDER = +/- 0.56 ACRES			

PAR 005 WILLIAM S JACKSON JR  
REQ'D PERM. EASMT FOR PURPOSE OF UTILITY DE211

PNT	OFFSET/ DIST	STATION/ BEARING	ALIGNMENT
DE1001	52.01 L	133+15.86	SR 4/US 25
	11.02	N 70°28'39.6" W	SR 4/US 25
DE2025	63.02 L	133+15.24	SR 4/US 25
	103.65	N 23°09'13.1" E	SR 4/US 25
DE2026	63.28 L	134+17.80	SR 4/US 25
	11.31	S 69°53'56.4" E	SR 4/US 25
DE1004	51.99 L	134+18.52	SR 4/US 25
	33.68	S 23°39'36.4" W	SR 4/US 25
DE1002	52.00 L	133+85.13	SR 4/US 25
	69.87	S 23°09'13.1" W	SR 4/US 25
DE1001	52.01 L	133+15.86	SR 4/US 25
REQD EASMT = 1144.53 SF			
REQD EASMT = 0.026 ACRES			

**006**  
WILLIAM S. JACKSON, JR  
SEE DWG. 60-0003, 60-0009

PAR 006 WILLIAM S. JACKSON, JR REQ'D PERM. EASMT. DE212

PNT	OFFSET/ DIST	STATION/ BEARING	ALIGNMENT
DE2018	33.77 R	35+32.30	DE3/Trail Connection
	200.97	N 66°13'36.2" W	DE3/Trail Connection
DE2028	37.34 R	33+23.06	DE3/Trail Connection
	73.81	N 60°57'45.8" W	DE3/Trail Connection
DE2027	18.28 R	32+51.75	DE3/Trail Connection
ARC LENGTH = 108.78			
CHORD BEAR = S 80°50'00.2" E			
LNTH CHORD = 108.56			
RADIUS = 487.00			
DEGREE = 11°45'54.2"			
115	9.00 R	33+59.91	DE3/Trail Connection
	169.97	S 61°33'44.4" E	DE3/Trail Connection
111	13.45 R	35+32.20	DE3/Trail Connection
	11.79	S 23°58'57.6" W	DE3/Trail Connection
112	25.24 R	35+32.21	DE3/Trail Connection
	8.54	S 23°25'33.3" W	DE3/Trail Connection
DE2018	33.77 R	35+32.30	DE3/Trail Connection
REQD EASMT = 6733.78 SF			
REQD EASMT = 0.155 ACRES			

**007**  
AUGUSTA  
SEE DWG. 60-0003, 60-0004, 60-0009

PAR 007 AUGUSTA REQ'D TEMP. EASMT DE109

PNT	OFFSET/ DIST	STATION/ BEARING	ALIGNMENT
625	47.09 L	135+64.42	SR 4/US 25
DE1003	59.39 L	135+61.75	SR 4/US 25
DE1005	61.50 L	135+75.23	SR 4/US 25
ARC LENGTH = 6.54			
CHORD BEAR = N 61°02'18.8" E			
LNTH CHORD = 6.53			
RADIUS = 36.55			
DEGREE = 156°45'44.4"			
120	57.50 L	135+80.44	SR 4/US 25
121	46.90 L	135+80.30	SR 4/US 25
625	47.09 L	135+64.42	SR 4/US 25
REQD EASMT = 226.32 SF			
REQD EASMT = 0.005 ACRES			

PAR 007 AUGUSTA REQ'D TEMP. EASMT DE207

PNT	OFFSET	STATION	ALIGNMENT
123	20.39 L	33+54.45	DE3/Trail Connection
124	8.18 L	32+69.34	DE3/Trail Connection
125	7.95 L	31+79.14	DE3/Trail Connection
DE2000	3.44 L	31+34.96	DE3/Trail Connection
DE2009	20.29 L	31+34.09	DE3/Trail Connection
DE2017	24.25 L	32+10.93	DE3/Trail Connection
DE2019	26.22 L	33+34.84	DE3/Trail Connection
123	20.39 L	33+54.45	DE3/Trail Connection
REQ'D EASMT = 3089.45 SF			
REQ'D EASMT = 0.071 ACRES			

**008**  
CITY OF NORTH AUGUSTA  
SEE DWG. 60-0005

PAR 008 CITY OF NORTH AUGUSTA REQ'D R/W DE111

PNT	OFFSET/ DIST	STATION/ BEARING	ALIGNMENT
437	22.77 R	144+34.93	SR 4/US 25
	44.73	N 20°54'11.4" E	SR 4/US 25
431	22.95 R	144+79.66	SR 4/US 25
	26.53	S 67°33'03.6" E	SR 4/US 25
DE1028	49.46 R	144+78.84	SR 4/US 25
	41.96	S 20°40'02.9" W	SR 4/US 25
DE1029	49.46 R	144+36.88	SR 4/US 25
	26.77	N 73°30'01.6" W	SR 4/US 25
437	22.77 R	144+34.93	SR 4/US 25
REQD R/W = 1153.19 SF			
REQD R/W = 0.026 ACRES			
REMAINDER = +/- 0.554 ACRES			

# Preliminary

DATE	REVISIONS	DATE	REVISIONS
6/27/25	PAR 003 REMOVED PESMT & REQD, REVISED TESMT.		
	PAR 006 REMOVED REQD, ADDED PESMT.		
	PAR 007 REMOVED REQD, ADDED TESMT.		
7/09/25	PAR 007 OFFSETS AND STATIONS UPDATED		
12/19/25	PAR 006 REVISED PESMT.		
01/29/26	PAR 007 REMOVED PESMT, ADDED TESMT		

KDW  
4/9/26

STATE OF GEORGIA DEPARTMENT OF TRANSPORTATION	
RIGHT OF WAY MAP	
PROJECT NO: N/A	COUNTY: RICHMOND(GA)
LAND LOT NO: N/A	LAND DISTRICT: 12(GA)
GMD 600	DATE 04/23/24 SH 13 OF 15
DRAWING No.	60-0013