



AUGUSTA ROWING CLUB

Facility Needs and Options

Presented by the Augusta Rowing Club & Augusta Sports Council

FACILITY NEEDS

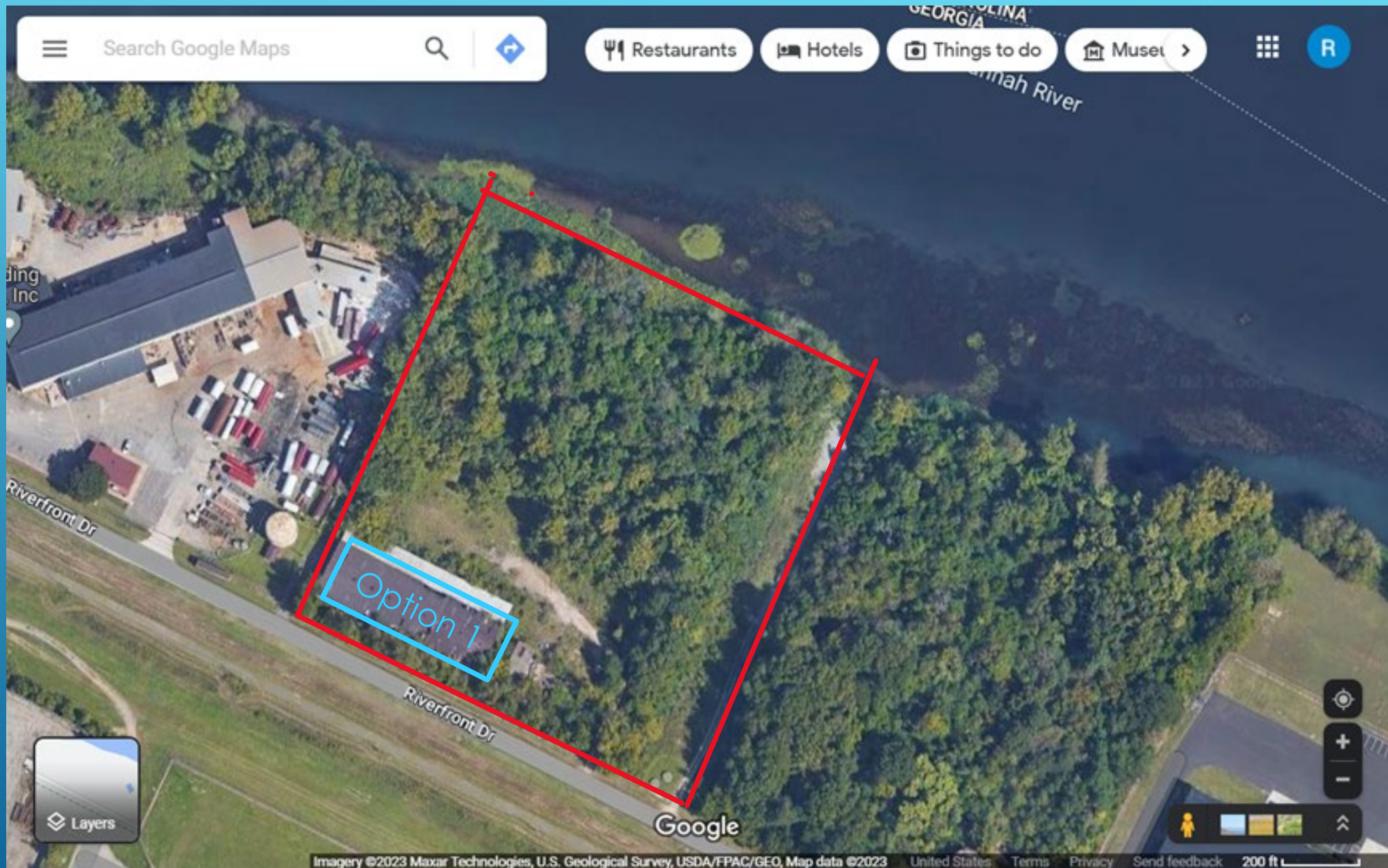
- The footprint minimum is 12,150 square feet – this is similar to the space the rowing club currently uses between upstairs and downstairs
- Minimum surface area of 60' x 90' for rowing shells (5,400 square feet)
- Meeting room with a surface area of 30' x 45' (1,350 square feet)
- Office with a surface area of 15' x 15' (225 square feet)
- Workshop with a surface area of 30' x 60' (1,800 square feet)
- Fitness Rooms with a surface area of 45' x 75' (3,375 square feet)
- Two bay/garage doors on one end of facility for removing and replacing shells. Garage door large enough to drive a truck or trailer into
- One garage door on opposite end of facility for access to workshop
- Dock Needs: Moving of docks for easy access to new location option

OPTIONS

The Augusta Rowing Club would like to present five location options that we have explored for a possible temporary or in one case, permanent home.

OPTION 1



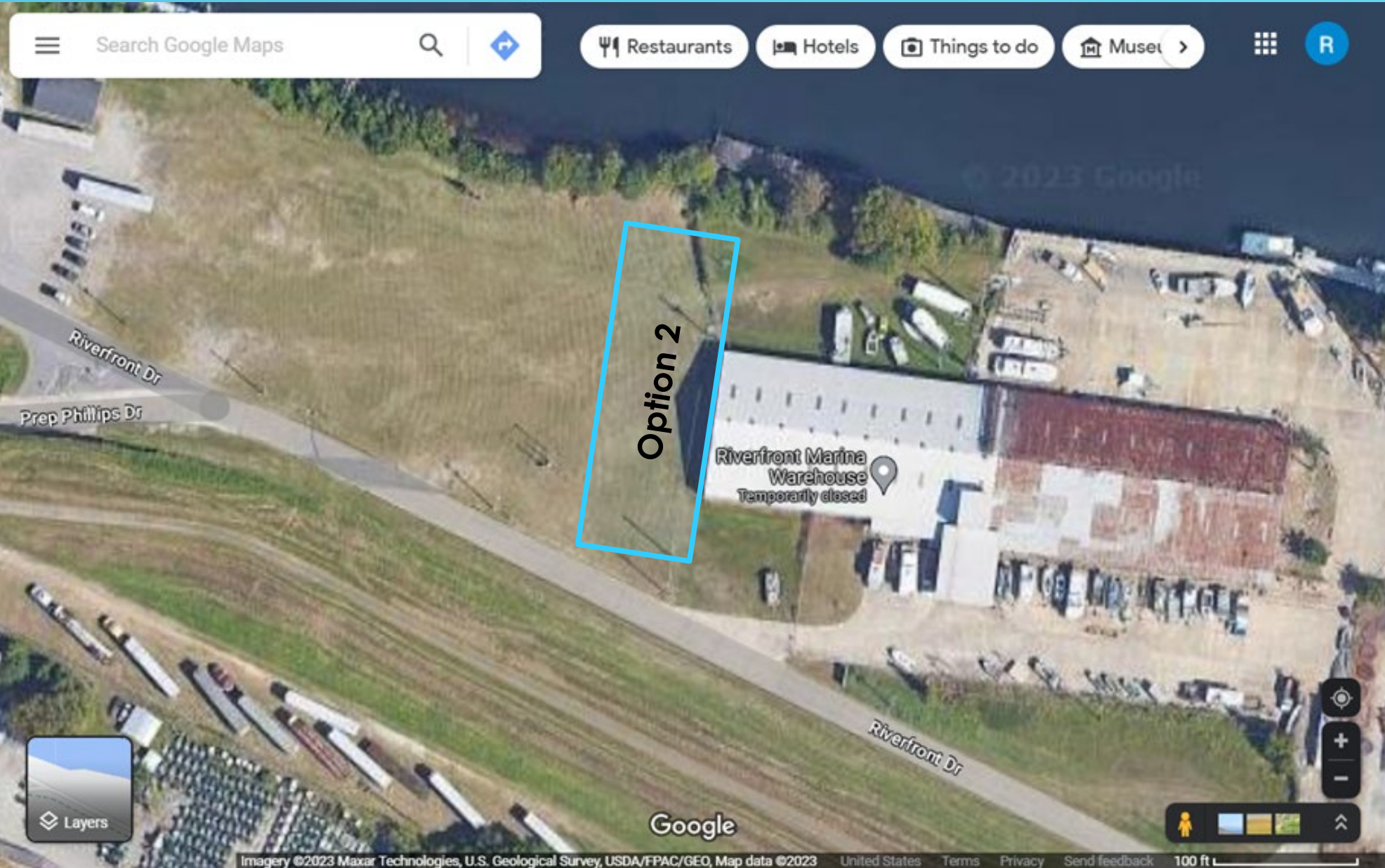


OPTION 1 CURRENT FOOTPRINT

- Former warehouse located further down Riverfront Drive
- Current concrete foundation is approximately 220' long x 90' wide-19,800 sq. ft.
- Concrete foundation is possibly salvageable with some patching
- Ramps would be needed on both ends to get to surface level
- Current beams would need removing and new ones added for safety and to allow the total surface area to be usable sheltered space
- Lot from structure to river would need clearing (red square on previous page)
- A parking lot that could park 15 boat trailers and 15 cars would be needed
- Option would need permanent restrooms and electricity
- This option could become a permanent home to the rowing club

OPTIONS 2 - 5

- Options 2 – 5 would all need to meet minimum square footage as described in slide two
- All options would need to have a parking lot large enough for 15 boat trailers and 15 cars
- All options would need restrooms and electricity
- Options 2 – 5 would be temporary
- Option 3 would only work if Augusta Rowing Club were only tenant on property



Search Google Maps



Restaurants



Hotels



Things to do



Museums



Layers

Google

Imagery ©2023 Maxar Technologies, U.S. Geological Survey, USDA/FPAC/GEO, Map data ©2023

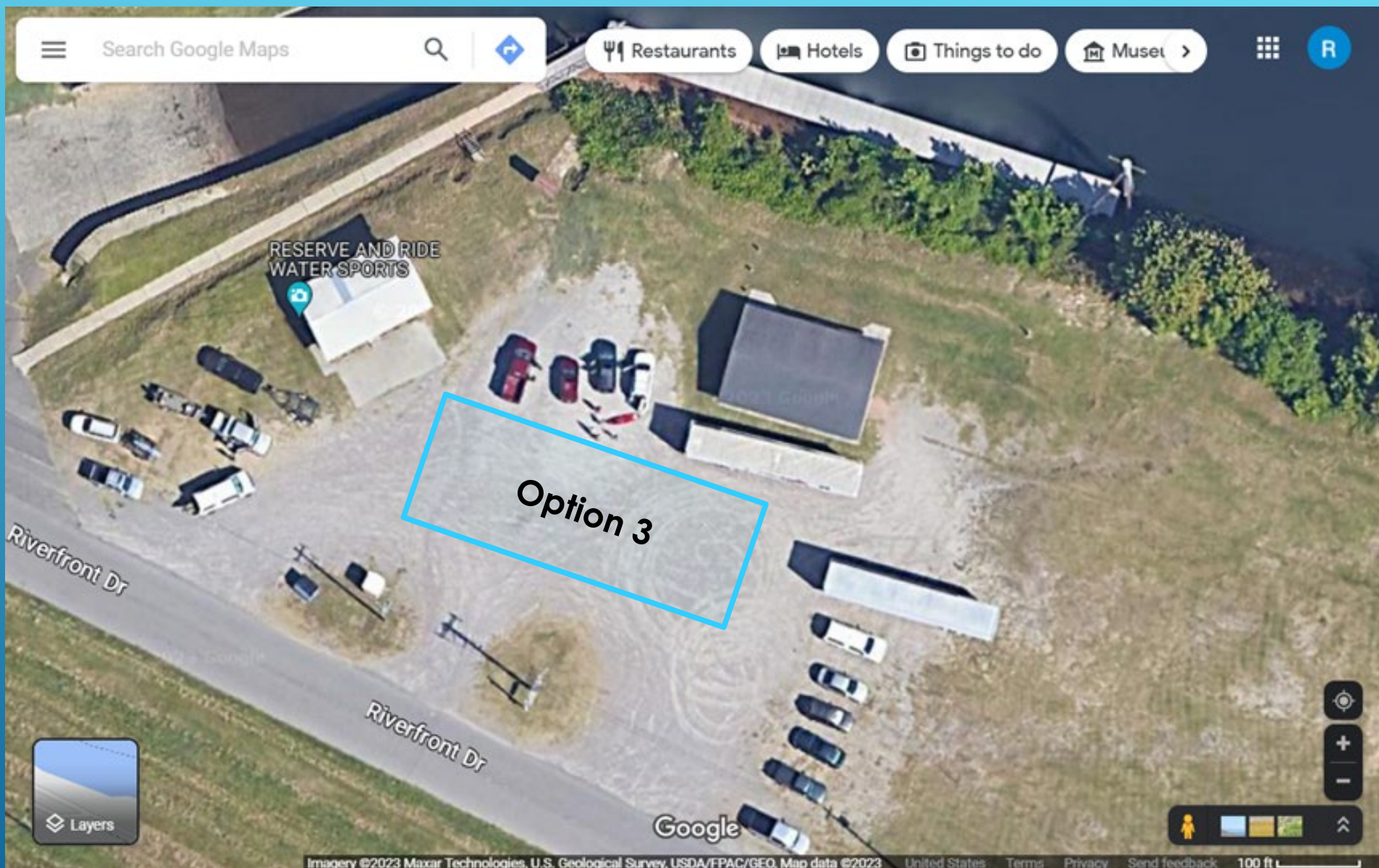
United States

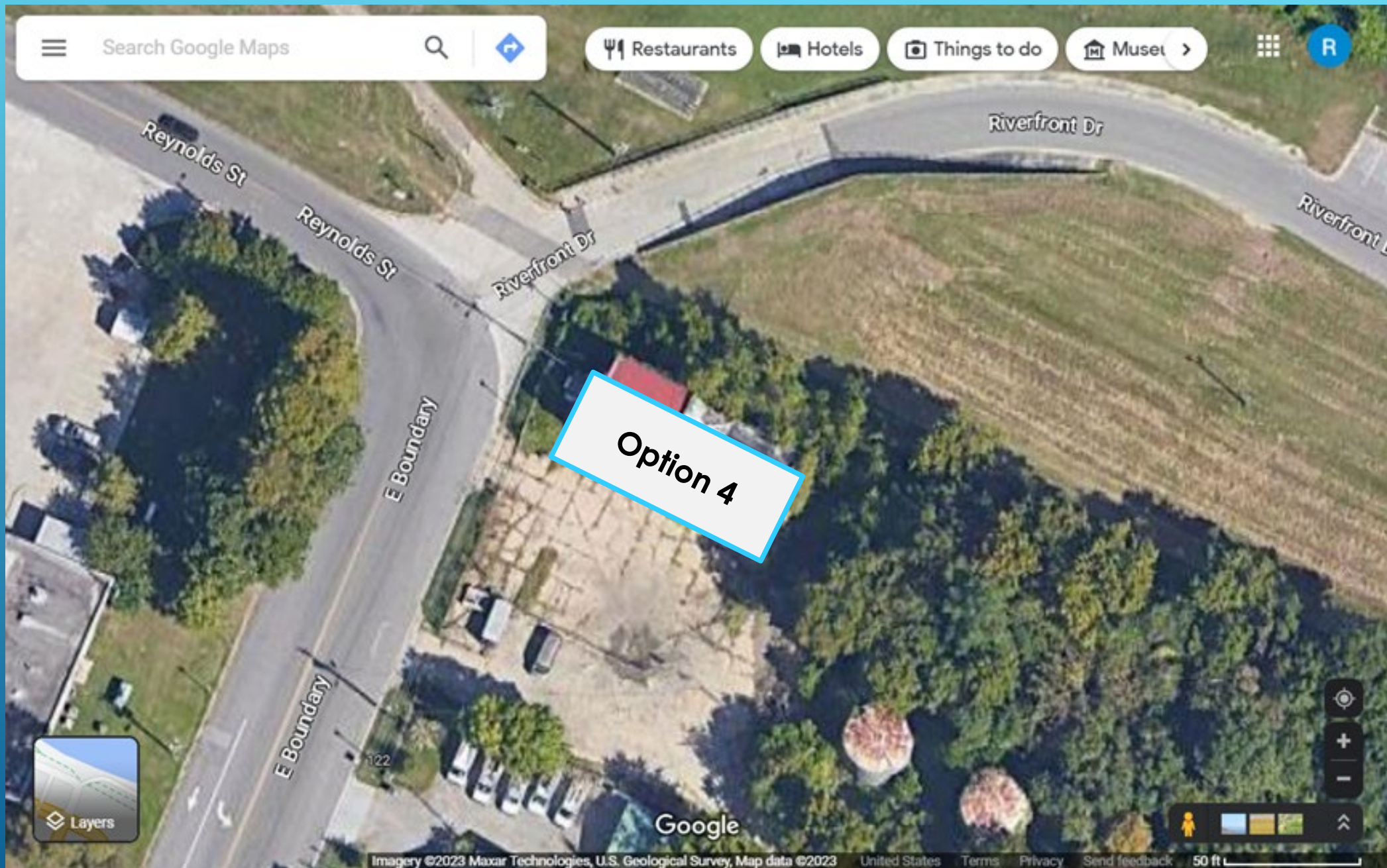
Terms

Privacy

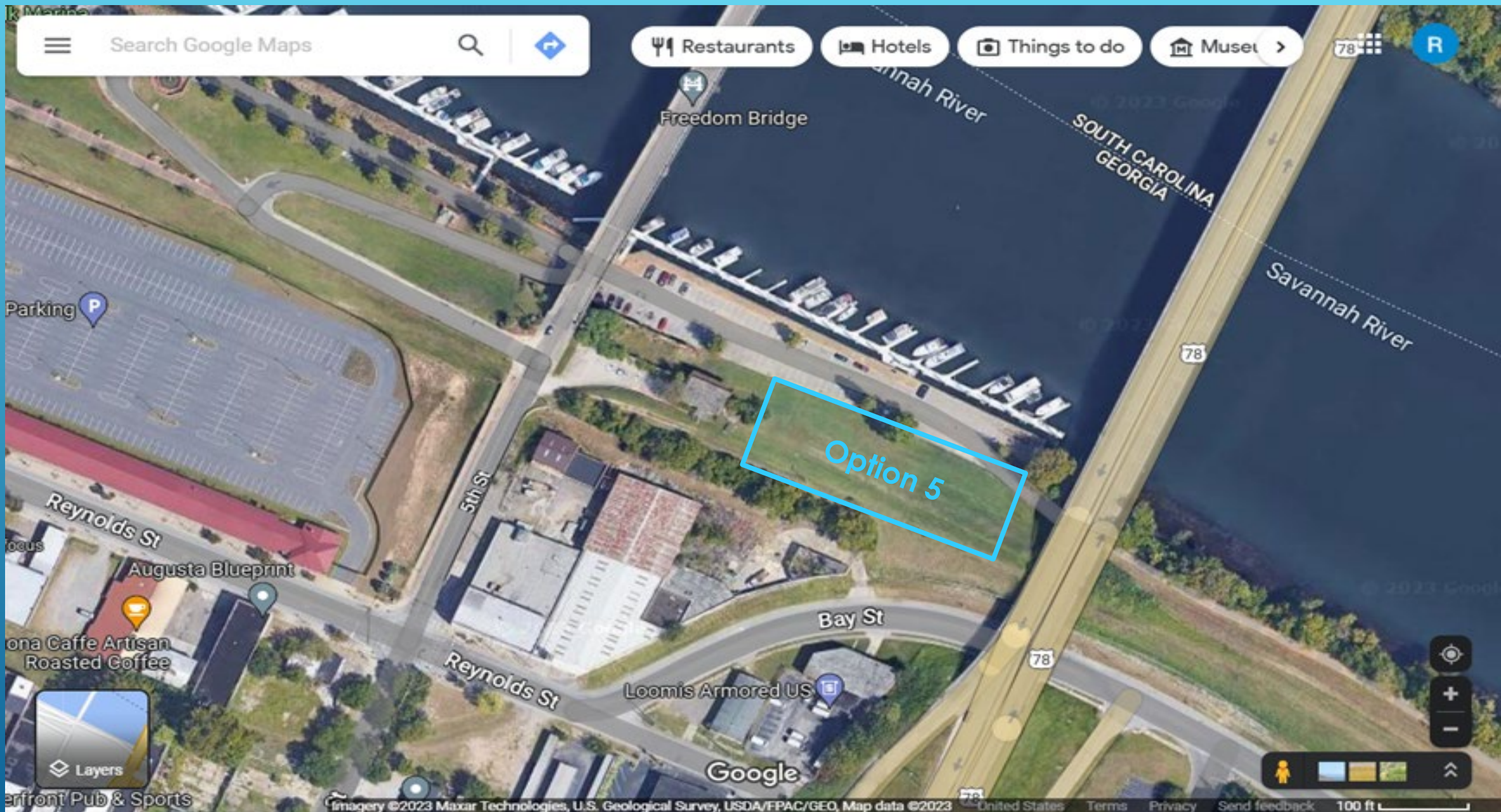
Send feedback

100 ft





Option 4



SIMILAR FACILITIES 1

Michigan State University





SIMILAR FACILITIES 2

Eastern Michigan University





QUESTIONS

THANK YOU!