

SITE PLAN FOR

# CHEATHAM COUNTY FARMERS COOPERATIVE

114 CUMBERLAND STREET  
ASHLAND CITY, TN 37015  
CHEATHAM COUNTY

SHEET INDEX

NOTE	_____	PROJECT NOTES
C1.01	_____	DEMO AND INITIAL EPSC
C1.02	_____	SITE LAYOUT
C1.03	_____	GRADING & DRAINAGE PLAN
C1.04	_____	FINAL STABILIZATION & GRADING PLAN
C2.01	_____	CONSTRUCTION DETAILS

CHEATHAM COUNTY FARMERS COOPERATIVE

DATE: 02/01/2024



SERVING CLIENTS WITH CIVIL ENGINEERING & LAND DEVELOPMENT SERVICES  
3556 TOM AUSTIN HWY, SUITE 1, SPRINGFIELD, TN 37172  
PHONE: (615) 382-2000 FAX: (888) 373-4485  
www.klobereng.com



JOSHUA M. LYON, P.E. TN#112331

NOT FOR CONSTRUCTION



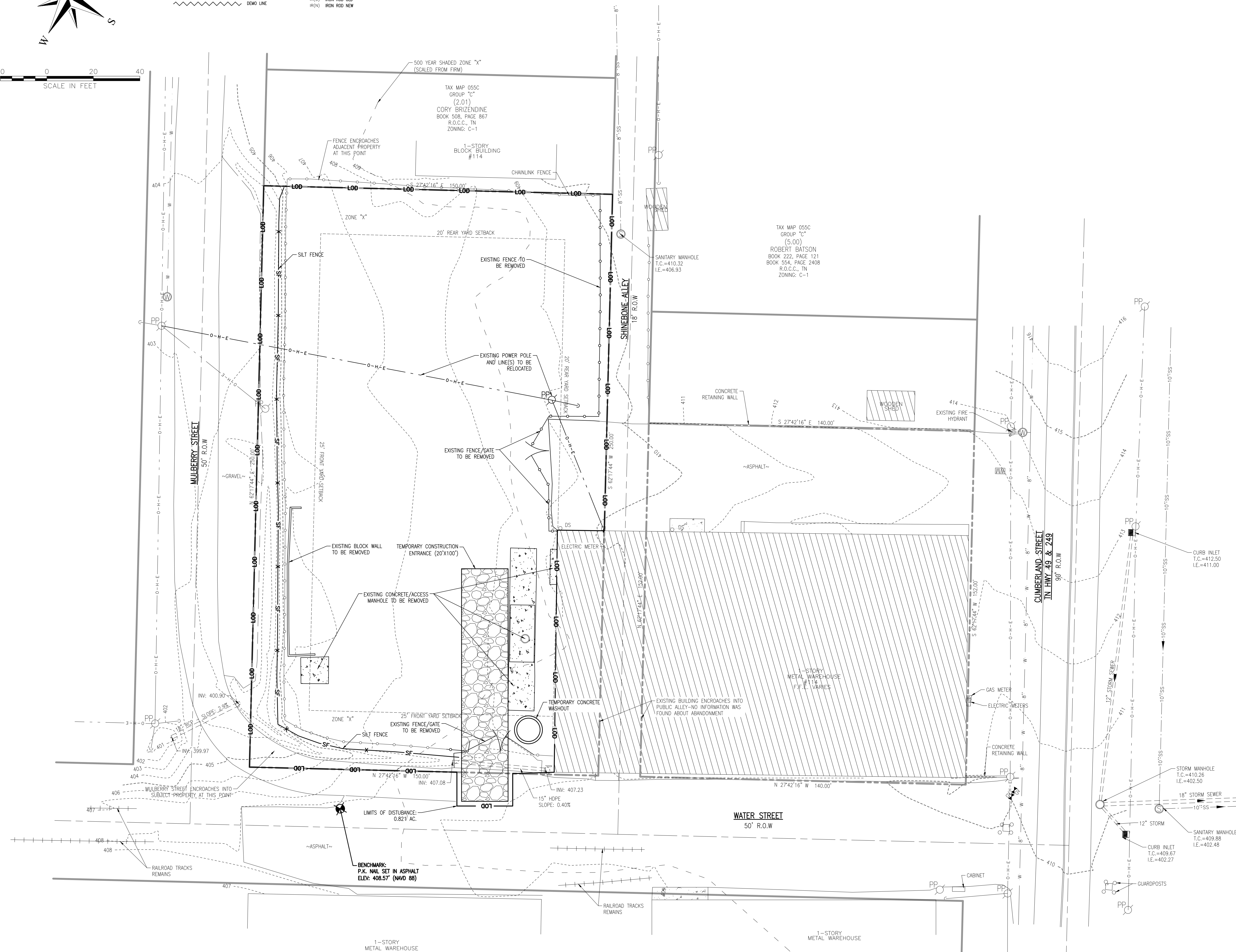
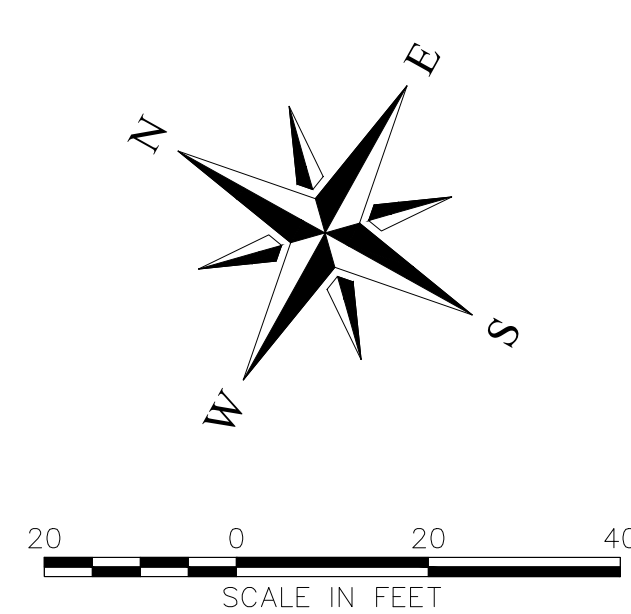
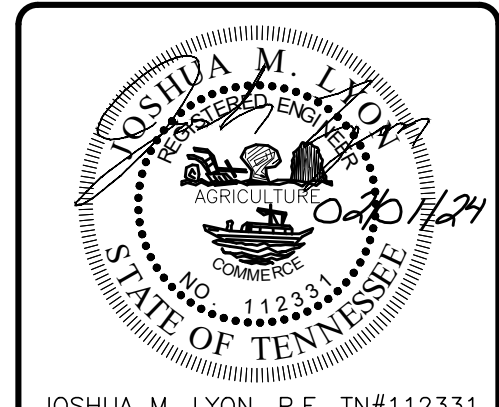
Vicinity Map  
Not to Scale

© 2024 Microsoft Corporation © 2023 TomTom







[illegible]

NOT FOR  
CONSTRUCTION

**CHEATHAM COUNTY  
FARMERS COOPERATIVE**

114 CUMBERLAND STREET  
ARTISTOWN, NORTH CAROLINA  
CHEATHAM COUNTY

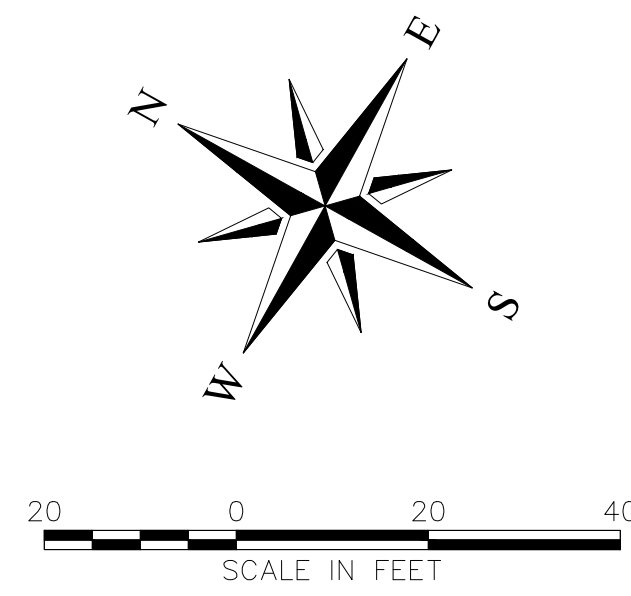
DRAWN BY:	RWS
CHECKED BY:	JML
PROJECT NO.:	C06023

# DEMO & INITIAL EPSC

---

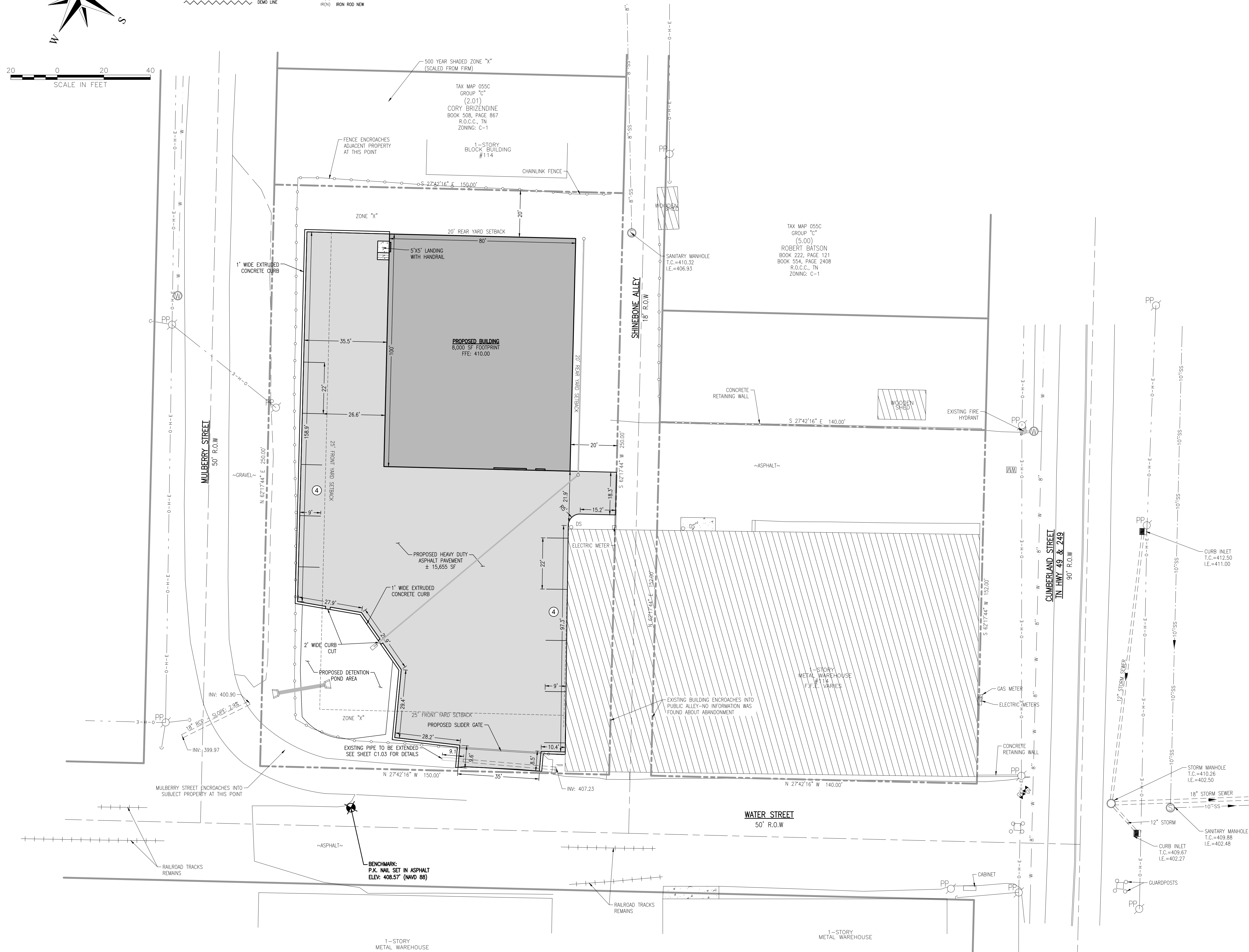
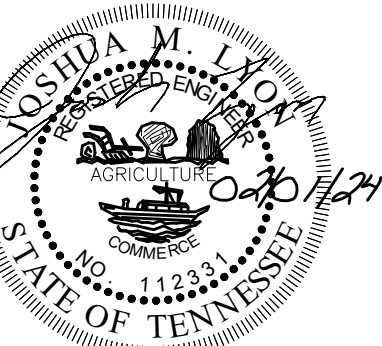
SHEET NUMBER

## C1.01



### LEGEND:

	PROPERTY LINE		MANHOLE		INVERT - 25.42	PIPE INVERT
	EXISTING SEWER LINE		CLEAN OUT		28.14	SPOT ELEVATION
	OVERHEAD ELECTRIC LINE		WATER METER			
	NEW CURB		FIRE HYDRANT			SLOPE DIRECTION
	SILT FENCE		IRON ROD OLD			
	EXISTING 5' CONTOUR		IRON ROD NEW			
	EXISTING 1' CONTOUR					
	NEW 1' CONTOUR					
	DEMO LINE					

[illegible]

NOT FOR  
CONSTRUCTION

CHEATHAM COUNTY  
FARMERS COOPERATIVE

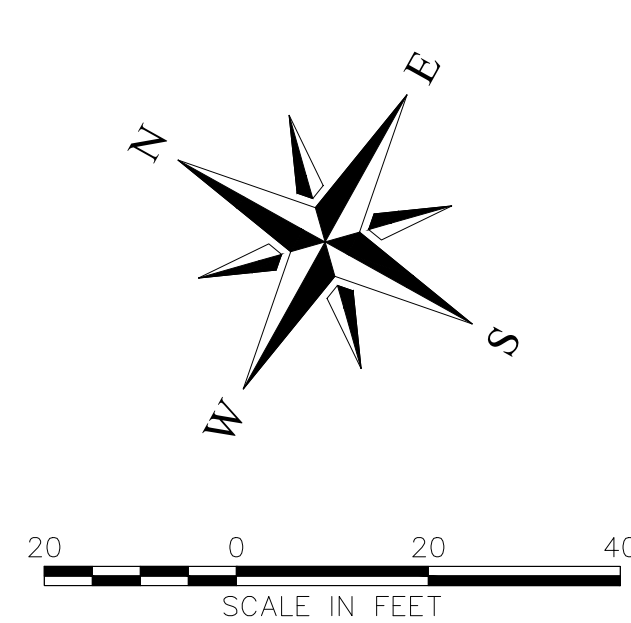
ASHLAND CITY, TN  
CHEATHAM COUNTY

DRAWN BY:	RWS
CHECKED BY:	JML
PROJECT NO.:	C06023

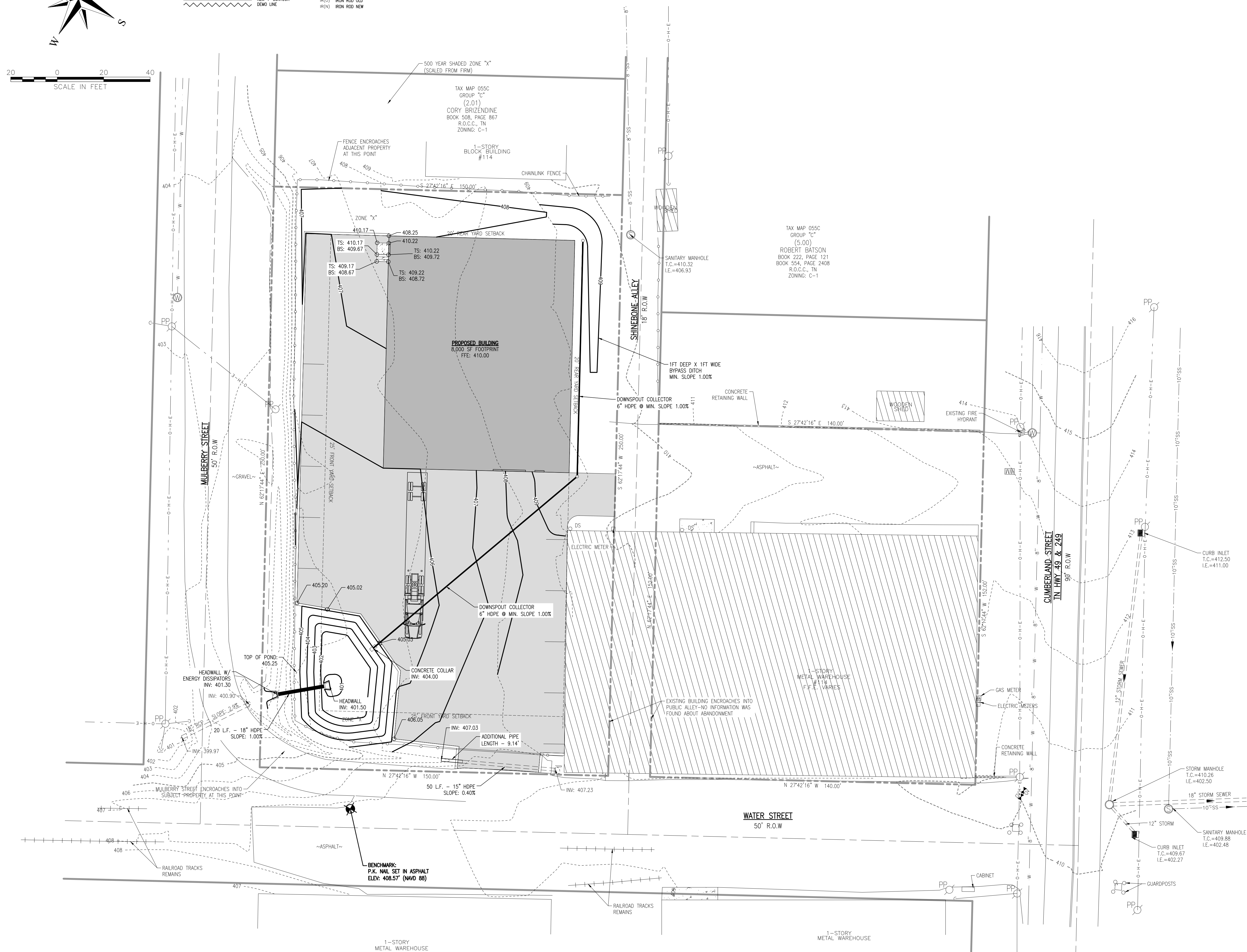
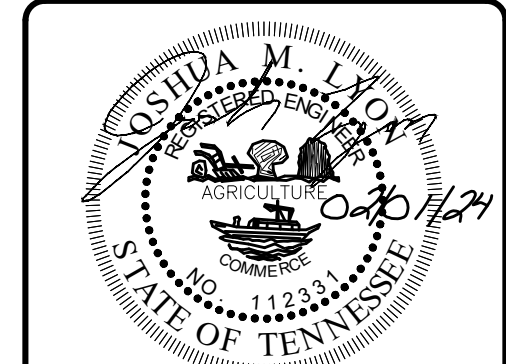
## SITE LAYOUT

SHEET NUMBER

# C1.02



	PROPERTY LINE		MANHOLE		PIPE INVERT
	EXISTING WATER LINE		CLEAN OUT		SPOT ELEVATION
	EXISTING SEWER LINE		POWER POLE		WATER METER
	OVERHEAD ELECTRIC LINE		FIRE HYDRANT		SLOPE DIRECTION
	NEW CURB		IRON ROD OLD		IRON ROD NEW
	SILT FENCE				
	EXISTING 5' CONTOUR				
	EXISTING 1' CONTOUR				
	NEW 1' CONTOUR				
	DEMO LINE				

[illegible]

JOSHUA M. LYON, P.E. TN#112331

NOT FOR  
CONSTRUCTION

CHEATHAM COUNTY  
FARMERS COOPERATIVE

1114 CUMBERLAND STREET  
ASHLAND CITY, TN  
CHEATHAM COUNTY

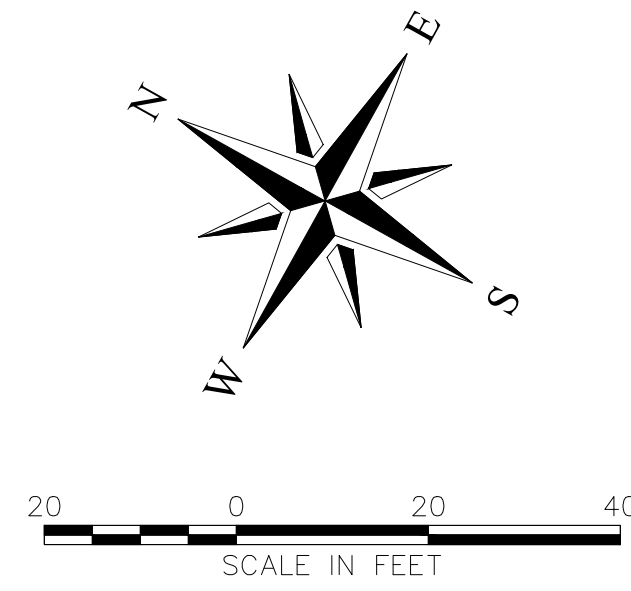
DRAWN BY:	RWS
CHECKED BY:	JML
PROJECT NO.:	C06023

## GRADING & DRAINAGE PLAN







SHEET NUMBER

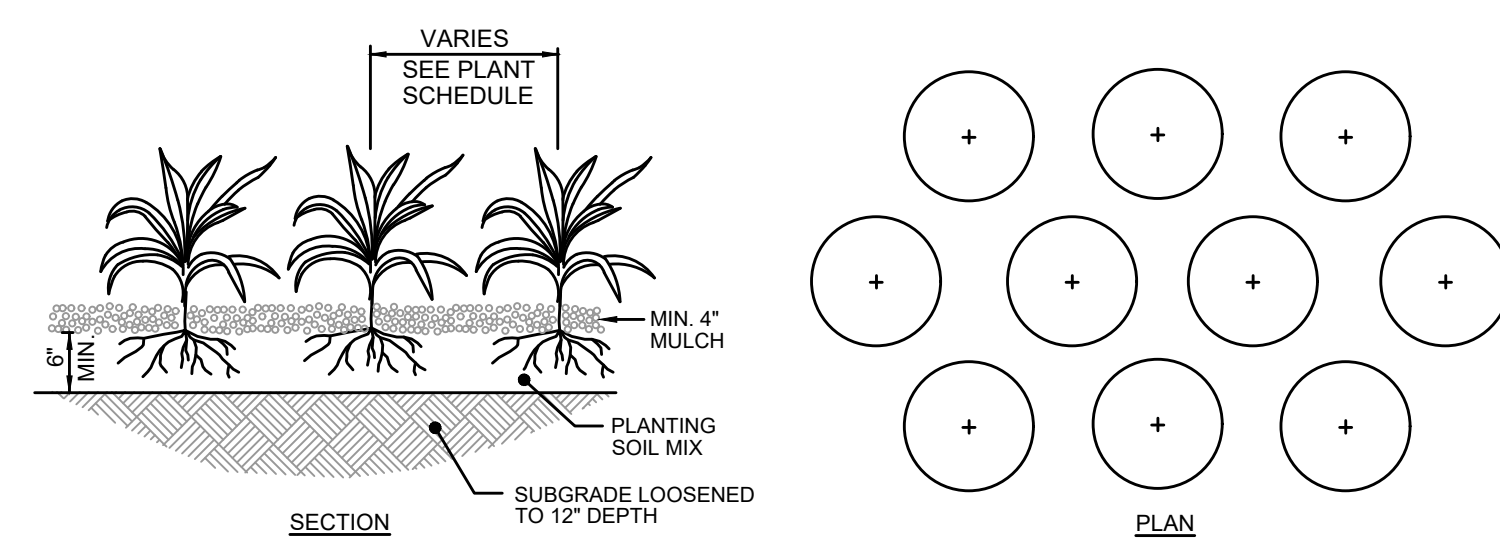
C1.03



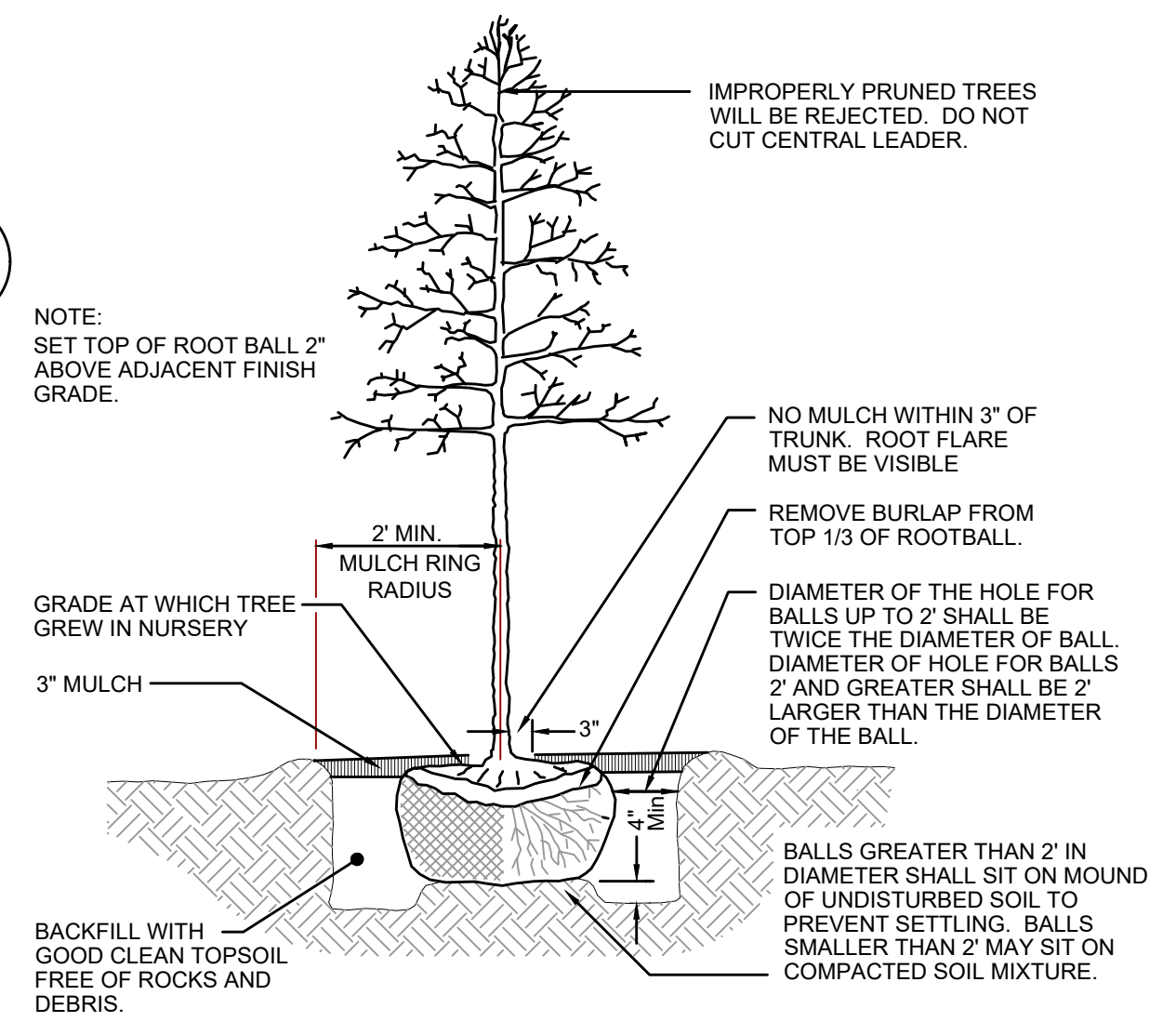


	PROPERTY LINE		MANHOLE		PIPE INVERT
	EXISTING WATER LINE		CLEAN OUT		SPOT ELEVATION
	EXISTING SEWER LINE		POWER POLE		SLOPE DIRECTION
	OVERHEAD ELECTRIC LINE		WATER METER		
	NEW CURB				
	SILT FENCE				
	EXISTING 5' CONTOUR				
	EXISTING 1' CONTOUR				
	DEMO LINE				
			IRON ROD OLD		
			IRON ROD NEW		

	SOD		RIP RAP
	MATTING		MULCH
	SEED & STRAW		HD PVMT



GROUND COVER / PERENNIAL PLANTING  
NOT TO SCALE



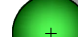

# DECIDUOUS TREE PLANTING

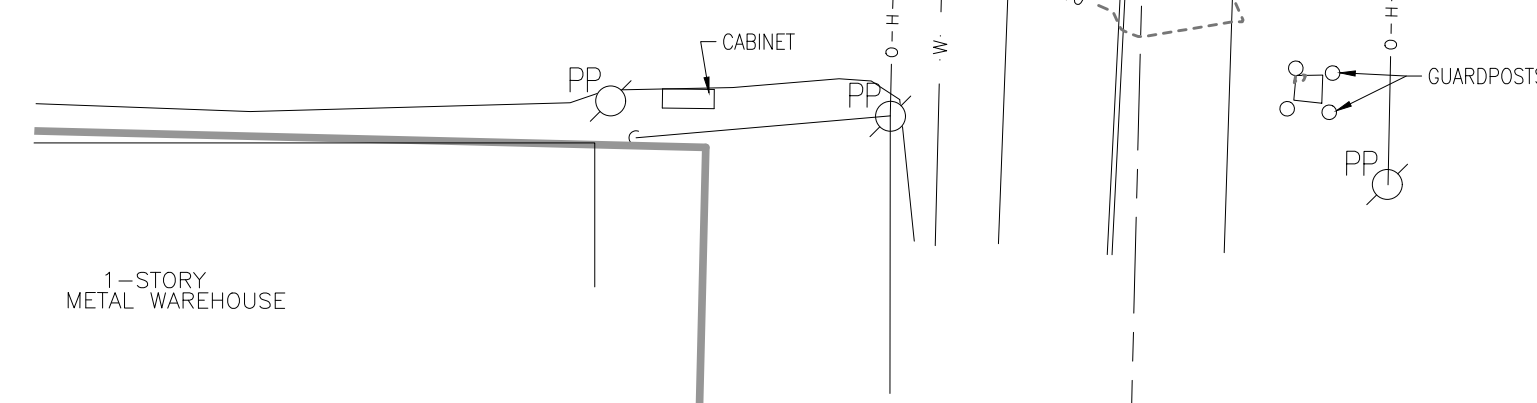
NOT TO SCALE



LANDSCAPING REQUIREMENTS			
35 CALIPER INCH PER ACRE	ACRES	TOTAL REQUIRED	TOTAL PROVIDED
CANOPY TREES			
1	0.86	5	5
UNDERSTORY TREES			
1	0.86	10	10

PLANT SCHEDULE					
QTY.	COMMON NAME	BOTANICAL NAME	HEIGHT	TRUNK	COMMENTS
CANOPY TREES					
5	AMERICAN SYCAMORE		10' - 12'	2" Cal.	
5	TOTAL - CANOPY TREES				
UNDERSTORY TREES					
10	GREEN GIANT ARBORVITAE		7' Min.	2" Cal.	
10	TOTAL - UNDERSTORY TREES				
15	TOTAL - ALL TREES				

TREE/SHRUB LEGEND	
CANOPY TREES	
	AMERICAN SYCAMORE
UNDERSTORY TREES	
	GREEN GIANT ARBORVITAE

[illegible]

JOSHUA M. LYON, P.E. TN#112331

NOT FOR  
CONSTRUCTION

# CHEATHAM COUNTY FARMERS COOPERATIVE

1114 CUMBERLAND STREET  
ASHLAND CITY, TN  
CHEATHAM COUNTY

DRAWN BY:	RWS
CHECKED BY:	JML
PROJECT NO.:	C06023
<b>FINAL STABILIZATION &amp; LANDSCAPING</b>	
SHEET NUMBER	

# C1.04





The image contains two technical drawings illustrating soil stabilization techniques.

**Top Left: Detail of Berm and Anchor Trench**

- A cross-section showing a berm with a width of 4' (1.2m).
- An anchor trench with a depth of 6" (150 mm) and a width of 6" (150mm).

**Top Right: Mats/Blankets Installation**

- Text: "MATS/BLANKETS SHOULD BE INSTALLED VERTICALLY DOWN SLOPE."
- A diagram showing a slope with mats/blankets installed vertically. A "LAMP DIRT OVER MATS/BLANKET" is indicated.
- Dimensions for the mats/blankets:
  - Width: 21' (6.4m) along the slope.
  - Height: 3' (1m).
  - Overlap: 2" (50mm) TO 3" (75mm) OVERLAP.
  - Splice: 6" (150mm) OVERLAP IN SPLICE.
  - Reinforcement: 12" (300mm) and 6" (150mm) dimensions are shown for the mat structure.

**Bottom Left: ISOMETRIC VIEW**

- A 3D perspective view of the slope stabilization system, showing the mats/blankets installed vertically down the slope.

**Bottom Right: WET SLOPE LINING**

- A cross-section of a wet slope lining system.
- Labels:
  - "FILTER CLOTH 4' (1.2m) SOURCE OF" with arrows pointing to the filter cloth.
  - "WATER TABLE" with a dashed line and arrows indicating the water level.
  - "NON-WOVEN GEOTEXTILE FILTER FABRIC UNDER TYPICAL TREATMENT" with arrows pointing to the fabric.

**Bottom Center: TYPICAL SLOPE SOIL STABILIZATION N.T.S.**

**Bottom Right: WET SLOPE LINING N.T.S.**

The image contains two technical diagrams of the Filtretex SQXX system. The top diagram is a cross-section showing the system installed in the ground. It features a layer of 18" diameter Filtretex SQXX fabric, with 2" x 2" x 36" wooden stakes placed 5' o.c. to hold it in place. A layer of concrete is shown on top of the fabric, with a maximum depth of contaminated water of 50% of the concrete washout height. A 12" minimum depth is indicated for the concrete layer. The bottom diagram is a plan view of the system, showing a circular concrete washout area. It features a 2" x 2" x 36" wooden stake placed 5' o.c. around the perimeter. A pump is shown drawing contaminated water into the concrete washout. The 18" diameter Filtretex SQXX fabric is shown around the perimeter of the washout area. The plan view also shows the concrete washout area and the 18" diameter Filtretex SQXX fabric.

**SECTION**

2" x 2" x 36" WOODEN STAKES PLACED 5' O.C.

MAXIMUM DEPTH OF CONTAMINATED WATER IS 50% OF CONCRETE WASHOUT HEIGHT

18" DIAMETER FILTRETEx® SQXX™ (ALSO AVAILABLE IN 8", 12" AND 24" DIAMETERS)

12" MIN.

**PLAN**

2" x 2" x 36" WOODEN STAKES PLACED 5' O.C.

PUMP CONTAMINATED WATER INTO CONCRETE WASHOUT

18" DIAMETER FILTRETEx® SQXX™ (ALSO AVAILABLE IN 8", 12" AND 24" DIAMETERS)

**NOTES:**

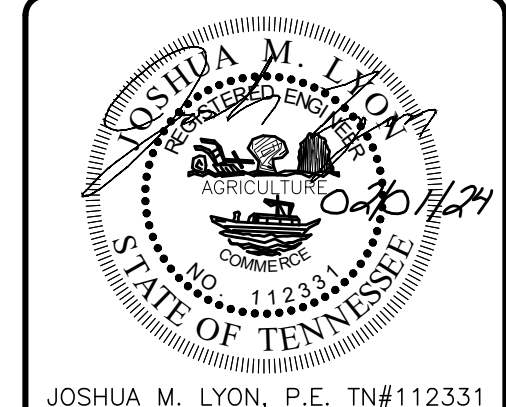
1. INSTALL ON FLAT GRADE FOR OPTIMUM PERFORMANCE
2. CONCRETE WASHOUT MAY BE STACKED IN PYRAMIDAL CONFIGURATION FOR ADDED HEIGHT AND STABILITY
3. CONCRETE WASHOUT MAY BE DIRECT SEE THE TIME OF INSTALLATION
4. LINE CONCRETE WASHOUT WITH GEOTEXTILE FABRIC



**KLOBBER**  
ENGINEERING SERVICES

SERVING CLIENTS WITH CIVIL ENGINEERING & LAND DEVELOPMENT SERVICES  
3550 101<sup>ST</sup> AVENUE, SUITE 100, BURNABY, BC V5C 2T7  
PHONE: (604) 352-2000 FAX: (604) 373-4468  
[www.klobbereng.com](http://www.klobbereng.com)

SERVING CLIENTS WITH CIVIL ENGINEERING & LAND DEVELOPMENT SERVICES  
3556 TOM AUSTIN HWY, SUITE 1, SPRINGFIELD, TN 37172  
PHONE: (615) 382-2000 FAX: (888) 373-4485  
[www.klobereng.com](http://www.klobereng.com)

[illegible]

JOSHUA M. LYON, P.E. TN#112331

NOT FOR  
CONSTRUCTION

CHEATHAM COUNTY  
FARMERS COOPERATIVE

1114 CUMBERLAND STREET  
ASHLAND CITY, TN  
CHEATHAM COUNTY

DRAWN BY:	RWS
CHECKED BY:	JML
PROJECT NO.:	C06023

## CONSTRUCTION DETAILS

SHEET NUMBER

C2.01

REPRODUCTION OF THESE DRAWINGS OR ANY PART THEREOF IS PROHIBITED WITHOUT WRITTEN APPROVAL OF KLOBER ENGINEERING SERVICES. THESE DRAWINGS ARE PROTECTED BY U.S. COPYRIGHT LAWS AND VIOLATORS ARE SUBJECT TO LEGAL RECOURSE.