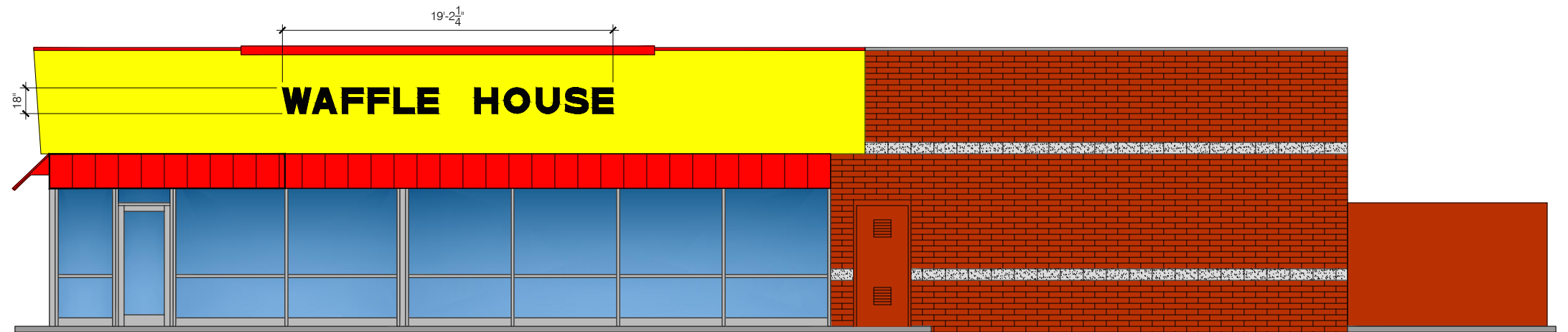
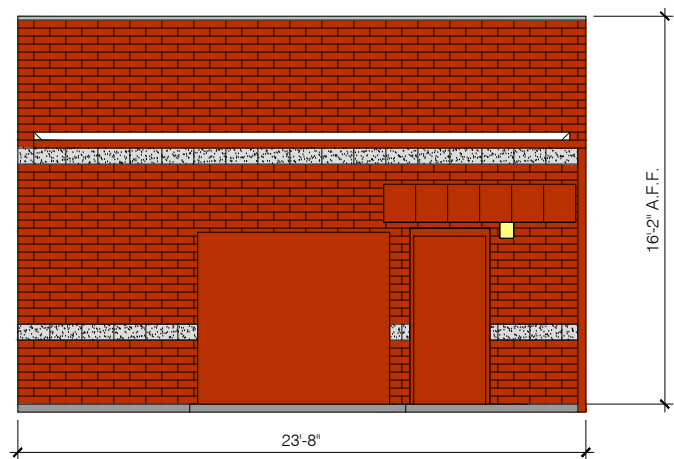


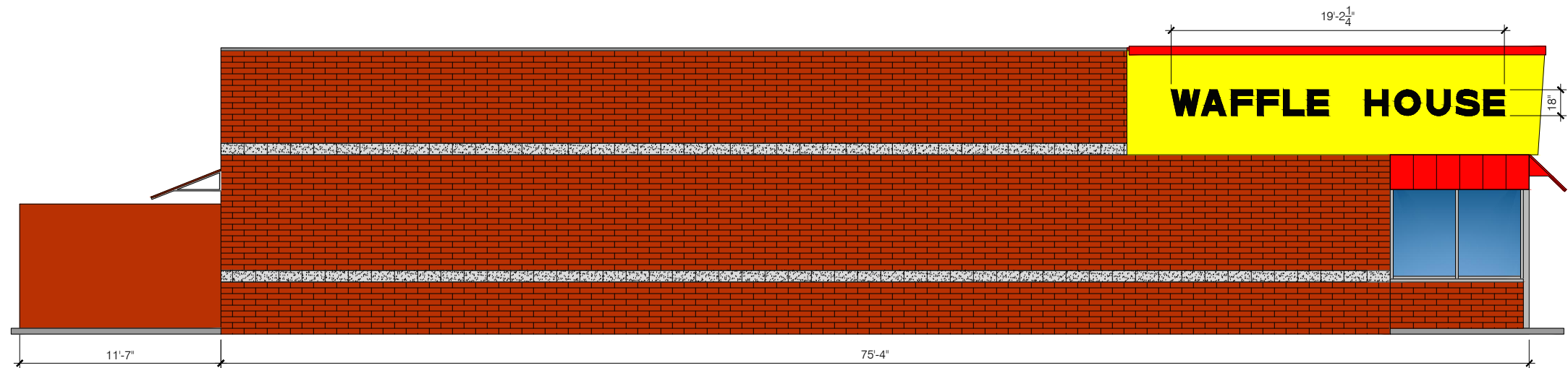
STRETCH END



LONG GLASS WALL



REAR



LONG BLOCK WALL

## PROPOSED WAFFLE HOUSE

ASHLAND CITY, TN

LEFT HAND, HIGH REVERSE SLOPE FASCIA BUILDING  
 RED STANDING-SEAM METAL AWNING  
 "RICHFIELD FLASHED" QUIK-BRIK  
 W/ GRAY SPLIT-FACE CMU ACCENT BANDS  
 SCALE: 1/8"=1'-0"



DECEMBER 7, 2021