

SITE PLAN FOR

ACE STORAGE

HIGHWAY 12
ASHLAND CITY, TN

SHEET INDEX:

C1.01	—————	INITIAL EPSC AND DEMOLITION PLAN
C1.02	—————	SITE LAYOUT
C1.03	—————	SITE GRADING AND DRAINAGE PLAN
C1.04	—————	FINAL STABILIZATION PLAN
C2.01	—————	CONSTRUCTION DETAILS
C2.02	—————	WATERLINE DETAILS



SERVING CLIENTS WITH CIVIL ENGINEERING & LAND DEVELOPMENT SERVICES
3556 TOM AUSTIN HWY, SUITE 1, SPRINGFIELD, TN 37172
PHONE: (615) 382-2000 FAX: (888) 373-4485
www.klobereng.com



JOSHUA M. LYON, P.E. TN#112331



Vicinity Map
Not to Scale

NOT FOR CONSTRUCTION

Z:\PROJECT\2023\CIVIL\COB23 Ace Storage - Ashland City\Current Civil Drawings\Ace Storage - Ashland City.dwg PLOTTED: 8/28/2023 11:54:41 AM

C1.03

PRESENT OWNER:
MARK & TONYA YARBROUGH
400 WARIO TO WAY #708
ASHLAND CITY, TN 37105

DEED REFERENCE:
MAP 55, PARCEL 36
LEE EATSON COMMERCIAL LOTS - LOT 1

PROPERTY INFORMATION:
AREA: 226,164 S.F. = 5.19 ACRES

ZONING:
COMMERCIAL C-2

SITE USE:
EXISTING USE: MINI STORAGE
PROPOSED USE: MINI STORAGE

SIGN NOTE:
ALL SIGNS SHALL COMPLY WITH THE MOST CURRENT EDITION OF THE ASHLAND CITY ZONING ORDINANCE. SEPARATE PERMIT REQUIRED.

SECURITY GATE:
SECURITY GATES OR BARRIERS SHALL BE EQUIPPED WITH A RADIO OPERATED RECEIVER/CONTROLLER CAPABLE OF RECEIVING SIGNALS FROM A POLICE DEPARTMENT, SHERIFF'S DEPARTMENT (IF THE GATED FACILITY OR COMMUNITY IS IN THE COUNTY), FIRE DEPARTMENT, UTILITY AND EMERGENCY MEDICAL SERVICES' RADIO TRANSCENDERS SERVING THE GATED FACILITY OR COMMUNITY WHICH ALLOW EMERGENCY RESPONDERS AND OTHER NECESSARY ON-DUTY EMPLOYEES TO OPEN THE SECURITY GATE OR BARRIER BY USE OF SUCH EQUIPMENT. ALL SECURITY GATES OR BARRIERS MUST MEET POLICES DEEMED NECESSARY BY THE AUTHORITY HAVING JURISDICTION OVER THE GATED FACILITY OR COMMUNITY FOR RAPID, RELIABLE, AND MUTUAL AID ACCESS. SUCH EQUIPMENT SHALL BE FURNISHED, INSTALLED AND MAINTAINED BY THE GATED FACILITY OR COMMUNITY THAT IS SERVED BY SUCH EQUIPMENT.

GENERAL NOTES:

1. PRIOR TO BEGINNING CONSTRUCTION ON THIS SITE THE LOCATION OF UTILITIES MUST BE IDENTIFIED BY CALLING THE TOLL-FREE TENNESSEE ONE CALL REFERENCE NUMBER 1-800-351-1111.
2. ALL CONSTRUCTION ON THIS SITE SHALL COMPLY WITH APPLICABLE REGULATIONS AS SPECIFIED BY THE CITY OF MILLERSVILLE AND THE STATE OF TENNESSEE.
3. TOPSOIL SHALL BE PLACED ON EXCAVATED AREAS WHICH REQUIRE NEW VEGETATION. GROUND COVER SHALL BE REESTABLISHED WITH KENTUCKY 31 FESCUE SEED AT A MINIMUM OF 250 LBS. PER ACRE. SLOPES 3:1 OR GREATER SHALL BE LINED WITH NORTH AMERICAN GREEN 5150 GRASS MATING OR EQUAL.
4. SILT FENCE SHALL BE INSTALLED IN ALL EROSION AREAS WHICH COULD ALLOW UNTREATED STORMWATER RUNOFF TO BE DISCHARGED FROM THE PROPERTY. ALL EROSION CONTROL MEASURES SHALL BE CONSISTENT WITH THE PROVISIONS DESCRIBED IN THE MOST CURRENT EDITION OF THE TENNESSEE EROSION & SEDIMENT CONTROL HANDBOOK.
5. THE STORMWATER RUNOFF CALCULATIONS ON THIS SITE HAVE BEEN PERFORMED USING THE U.S. SOIL CONSERVATION SERVICE TR-55 METHOD. STORMWATER POND HAS BEEN SIZED TO HANDLE A 25 AND 100 YEAR STORM EVENT.
6. THE TOPOGRAPHIC SURVEY SHOWN HEREON WAS TAKEN FROM A SURVEY BY STEVEN E. ARTZ SURVEYING OF SPRINGFIELD, TN.
7. CONSTRUCTION WILL BEGIN FOLLOWING PLAN APPROVAL BY THE CITY OF ASHLAND CITY. THE BUILDING SHOULD FRONT TRED DORRIS ROAD, AND BE SERVICED BY UNDERGROUND UTILITY LINES.
8. ANY DUMPSTER SHALL BE FULLY ENCLOSED, MATCHING THE FACADE OF THE BUILDING, AND A WOODEN PRIVACY FENCE GATE THAT IS 8 FEET HIGH ON ALL SIDES AND ALL SERVICE BOXES AND MECHANICALS TO BE IN THE REAR OF THE BUILDING.
9. ALL ADDITIONS IN THE FUTURE MUST BE BUILT TO THESE STANDARDS.
10. THIS PROPERTY IS LOCATED IN ZONE "A" AND ZONE "X" (AREAS OUTSIDE THE 0.2% ANNUAL CHANCE FLOODPLAIN AS SHOWN ON NFP FIRM MAP ACCORDING TO THE FEMA MAP PANEL NUMBER 47021001700, DATED 9/10/2010).

NPDES PERMIT NOTE:
THE MAXIMUM DISTURBED AREA FOR THIS PROJECT IS OVER 1 ACRE. THIS SITE IS CURRENTLY COVERED UNDER PERMIT NUMBER TNR245326.

EP&SC NOTES:

1. AN EROSION PREVENTION SILTATION CONTROL PLAN (EP&SC) AND LAND DISTURBANCE PERMIT (IF REQUIRED) SHALL BE IN PLACE PRIOR TO ANY GRADING, CLEARING AND/OR ANY OTHER CONSTRUCTION ACTIVITY. EROSION CONTROL DEVICES SHALL BE MAINTAINED THROUGHOUT THE CONSTRUCTION PERIOD, GENERALLY CONSIDERED TO BE THROUGHOUT THE COMPLETION OF RESTORATION. IF REQUIRED, THE EP&SC PLAN ALONG WITH AN INSPECTION CHECKLIST AND STORMWATER PERMIT MUST BE AT THE PROJECT SITE AT ALL TIMES. THE INSPECTION CHECKLIST SHALL HAVE A RECORD OF DATES EP&SC DEVICES ARE INSPECTED AND ANY CORRECTION ACTION TAKEN OR MAJOR OBSERVATIONS. BMP'S MUST BE INSPECTED BY A QUALIFIED PERSON WHO HAS TAKEN AN APPROVED EROSION AND SEDIMENTATION COURSE.
2. ALL EP&SC DEVICES ARE TO REMAIN IN PLACE UNTIL THE SITE HAS BEEN STABILIZED AND A GOOD STAND OF GRASS HAS BEEN ESTABLISHED.
3. EROSION PREVENTION AND SEDIMENT CONTROLS MUST BE INSPECTED AT LEAST TWICE EVERY CALENDAR WEEK AT LEAST 72 HOURS APART. INSPECTIONS ARE TO BE DOCUMENTED AND KEPT WITH THE SWPPP (IF REQUIRED).
4. SILT FENCE, OR OTHER SEDIMENT BARRIERS ARE TO BE INSTALLED PROPERLY ALONG TOPOGRAPHICAL CONTOURS DOWN SLOPE OF THE AREA TO BE DISTURBED PRIOR TO ANY GRADING, CLEARING AND/OR ANY OTHER CONSTRUCTION ACTIVITY.
5. EXCAVATED TOPSOIL TO BE REUSED MUST BE STOCKPILED AND ENCLOSED WITH SILT FENCING.
6. THIS SITE SHALL CONTAIN A TEMPORARY STONE CONSTRUCTION ENTRANCE THAT CONFORMS TO REQUIRED SPECIFICATIONS PRIOR TO GRADING COMMENCEMENT. THE STONE SHALL BE 2 TO 3 INCH IN DIAMETER AND SHALL BE KEPT CLEAN BY ADDING STONE AS NEEDED. IT SHALL BE AT LEAST 8 INCHES DEEP UNDERLAIN WITH FILTER FABRIC AND 20 FEET WIDE.
7. APPROVED INLET PROTECTIONS FOR NEARBY STORM SEWER CURB AND DROP INLETS MUST BE INSTALLED WITHIN 24 HOURS OF GRADING COMMENCEMENT.
8. VEGETATIVE BUFFERS OR OTHER PROTECTION MUST BE PROVIDED ALONG STREAMS, RIVERS, AND PONDS TO AVOID EROSION OF BANKS.
9. STABILIZATION MEASURES MUST BE PERFORMED WITHIN SEVEN (7) DAYS IN PORTIONS OF THE SITE WHERE CONSTRUCTION ACTIVITIES HAVE TEMPORARILY OR PERMANENTLY CEASED, AND WITHIN FIFTEEN (15) DAYS AFTER FINAL GRADING.
10. ALL TREES DESIGNATED TO REMAIN MUST BE PROTECTED. HEAVY EQUIPMENT SHOULD NOT BE OPERATED OR STORED, NOR MATERIALS HANDLED OR STORED, WITHIN THE DRIP LINES OF TREES.
11. SEDIMENT MUST BE REMOVED FROM SEDIMENT BARRIERS, PONDS, AND OTHER SEDIMENT CONTROLS WHEN DESIGN CAPACITY HAS BEEN REDUCED BY 50%.
12. SEDIMENT THAT HAS ESCAPED THE CONSTRUCTION SITE AND HAS COLLECTED IN THE STREET OR DRAINAGE STRUCTURES MUST IMMEDIATELY BE PHYSICALLY REMOVED.
13. BUILDING AND WASTE MATERIALS, AND NON STORM WATER DISCHARGES, SUCH AS CONCRETE, PAINT WASH WATER, OR MACHINERY LEAKAGE, OR SPILLAGE MUST BE MANAGED TO PREVENT THEM FROM ENTERING THE STORM WATER SYSTEM, GROUND WATER, OR NEARBY WATER BODY.
14. THE PROJECT IS SUBJECT TO INSPECTION BY THE CITY AT ANY TIME AND ITEMS FOUND DEFICIENT SHALL BE IMMEDIATELY CORRECTED. THE CITY MAY STOP CONSTRUCTION OR PROPERTIES, OR ADMINISTER OTHER ENFORCEMENT ACTIONS AS DEFINED BY THE CITY.

CALL BEFORE YOU DIG


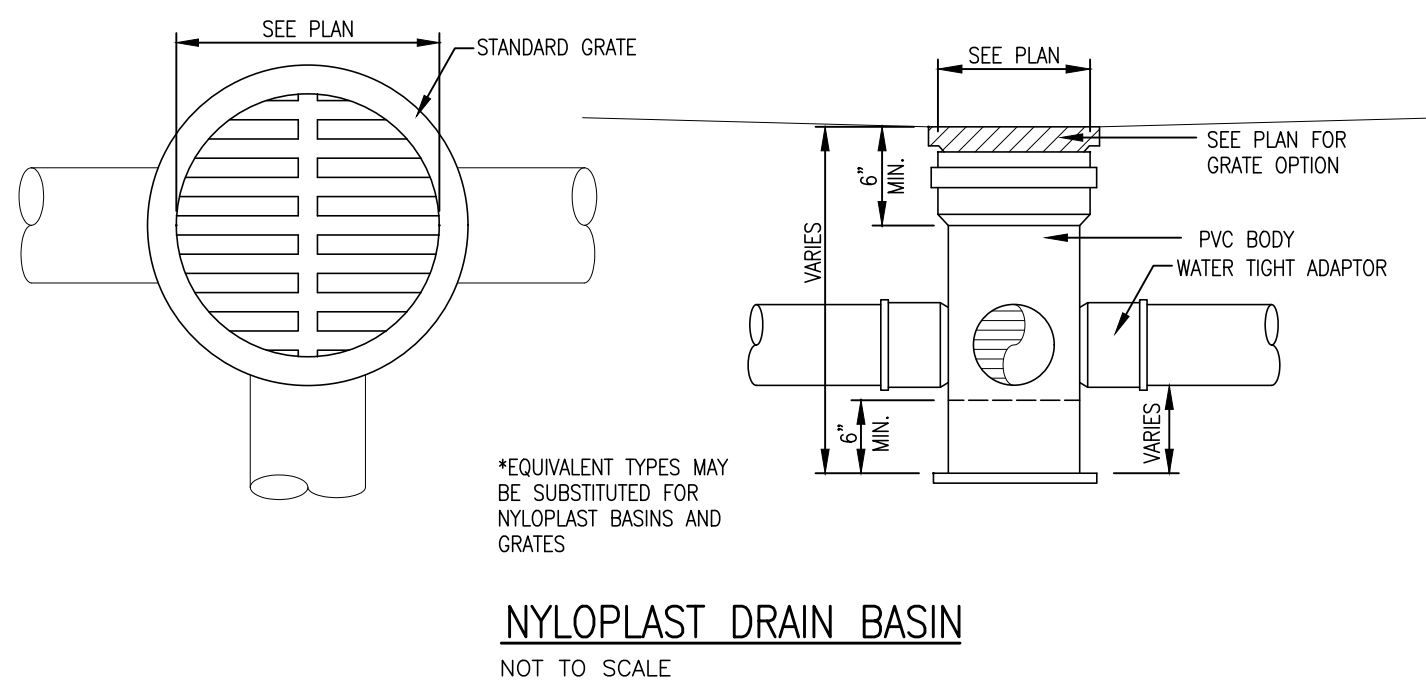
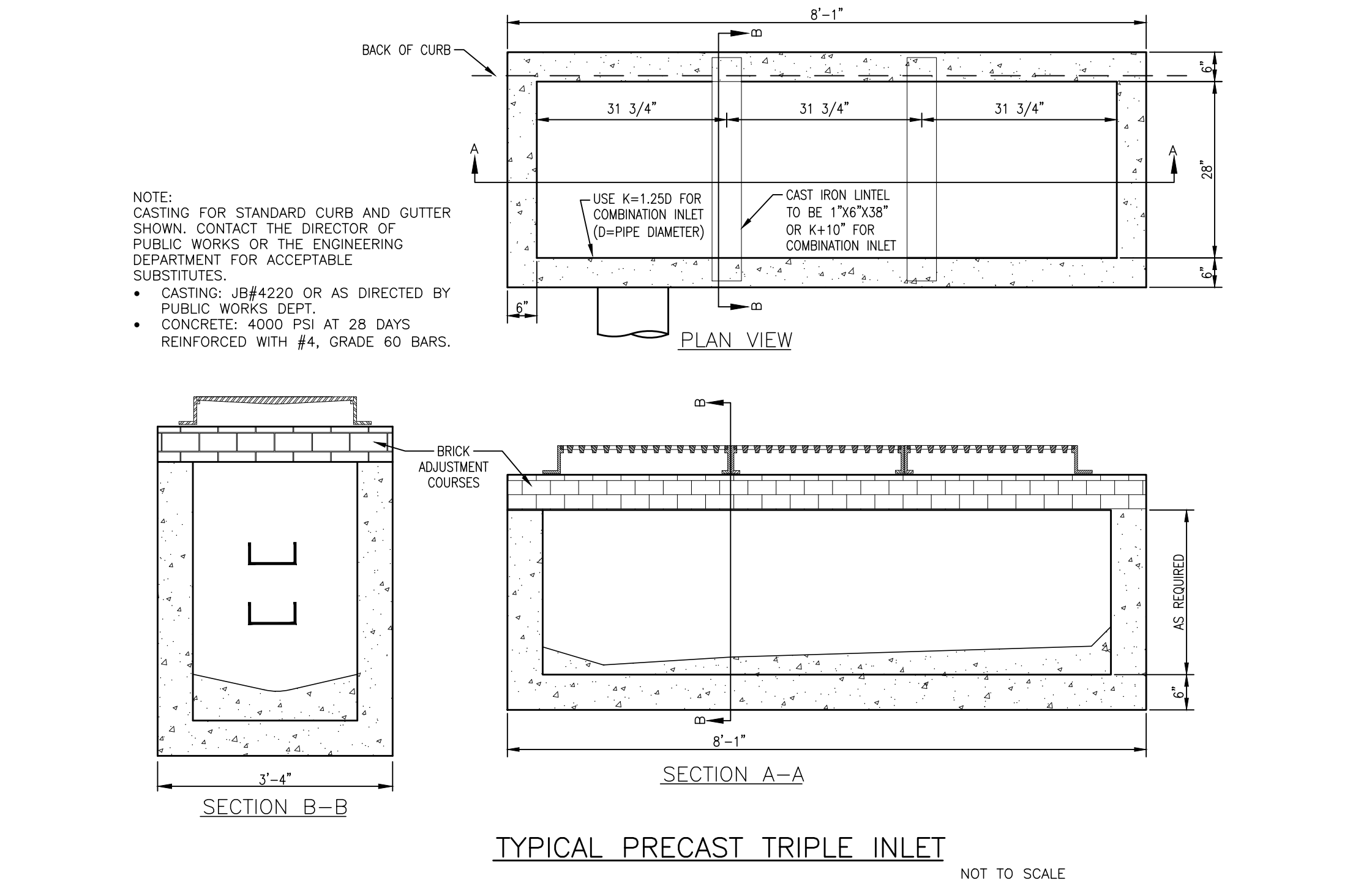
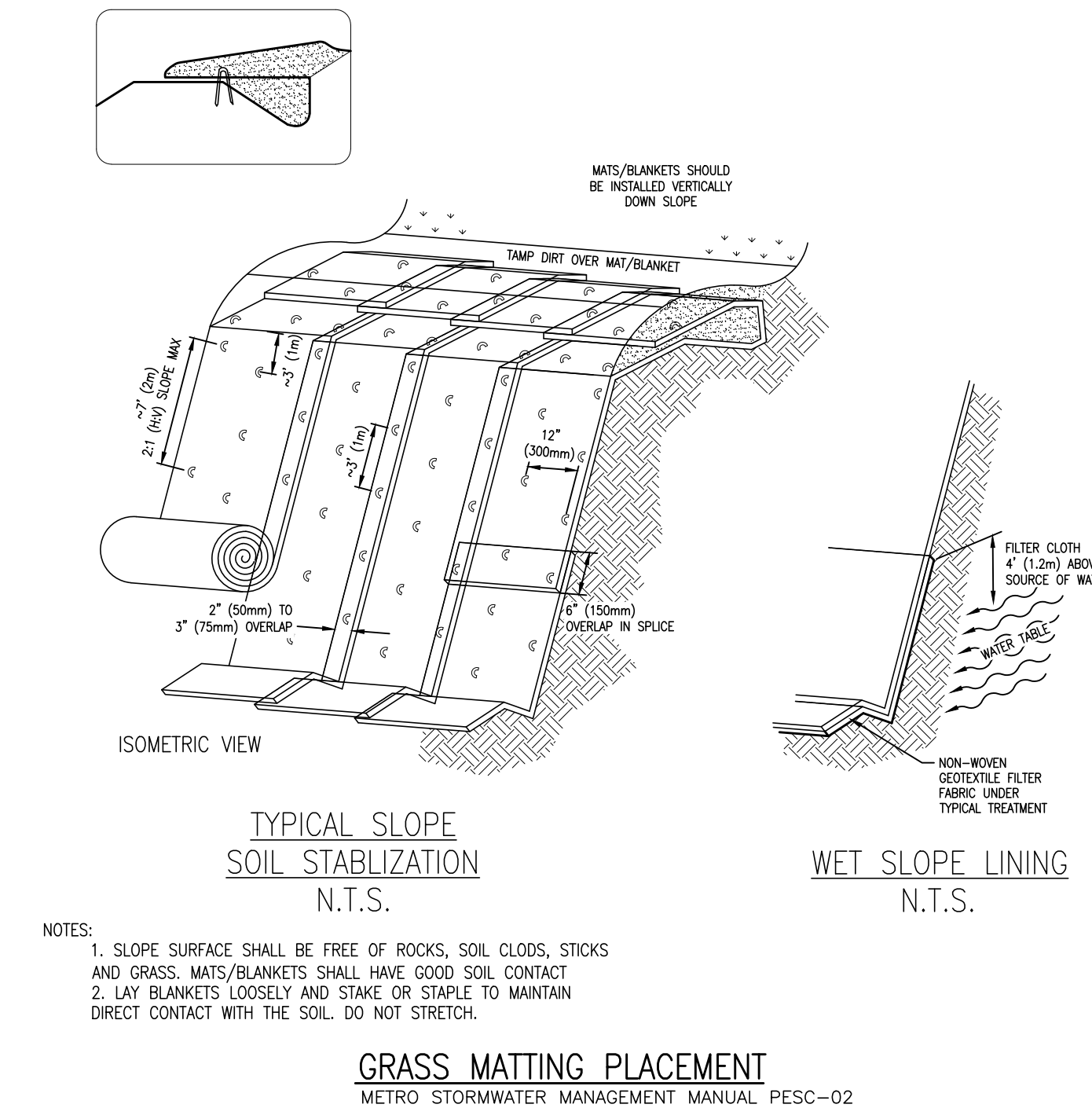
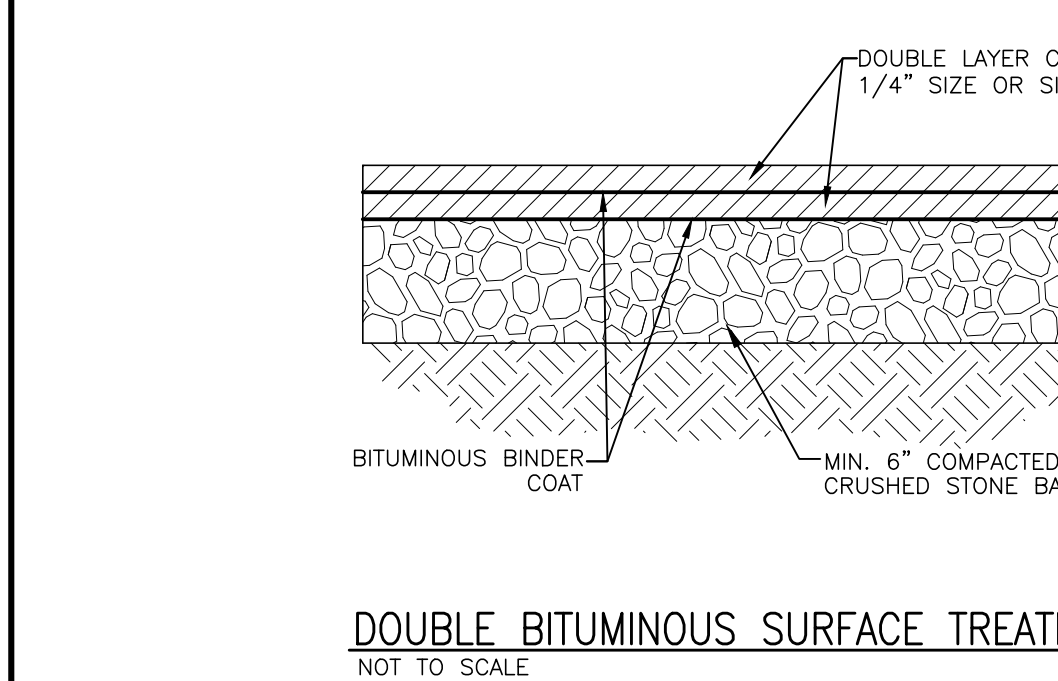
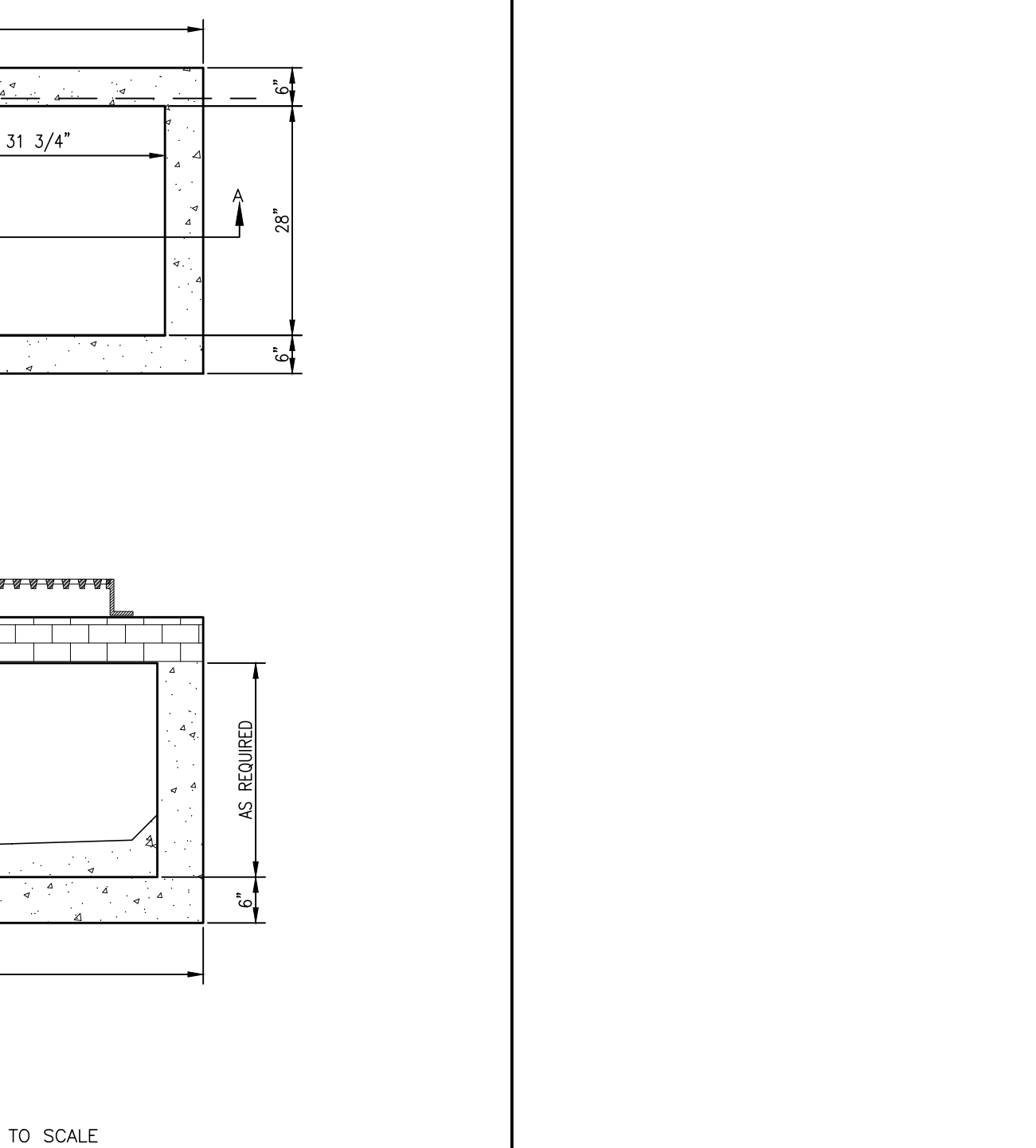
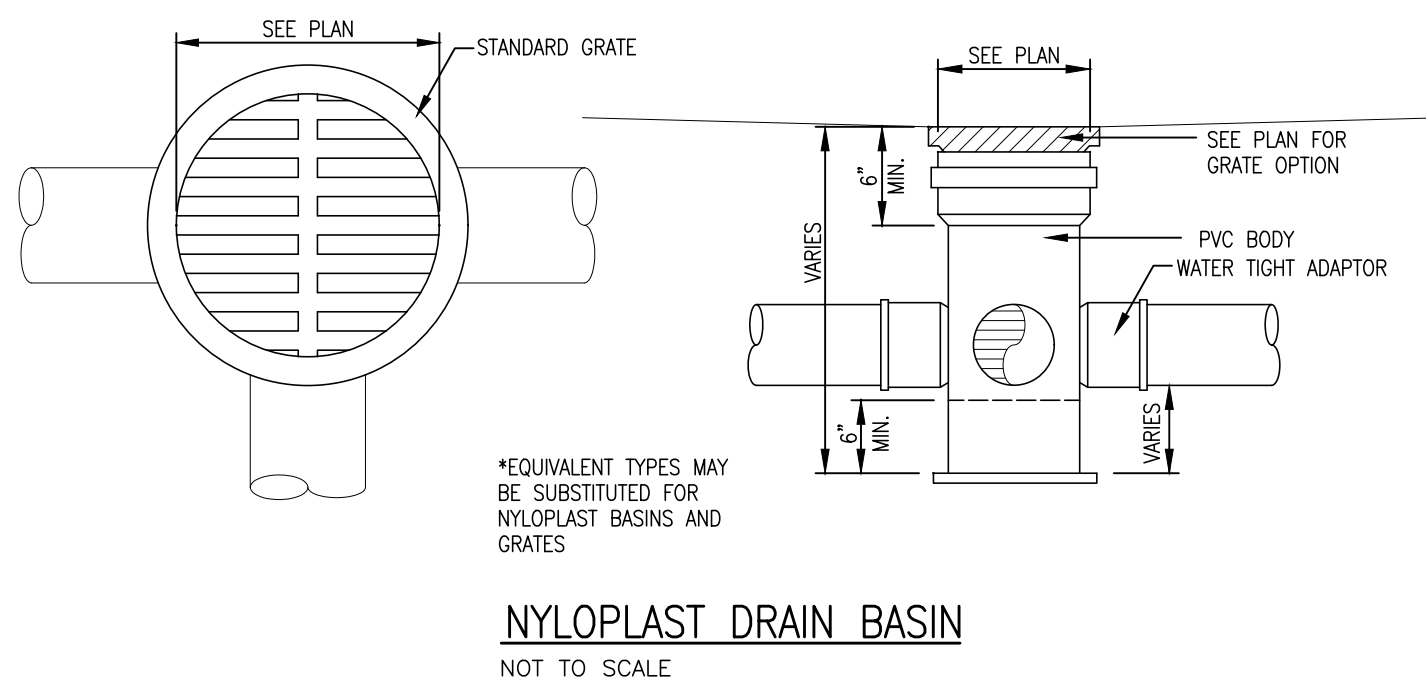
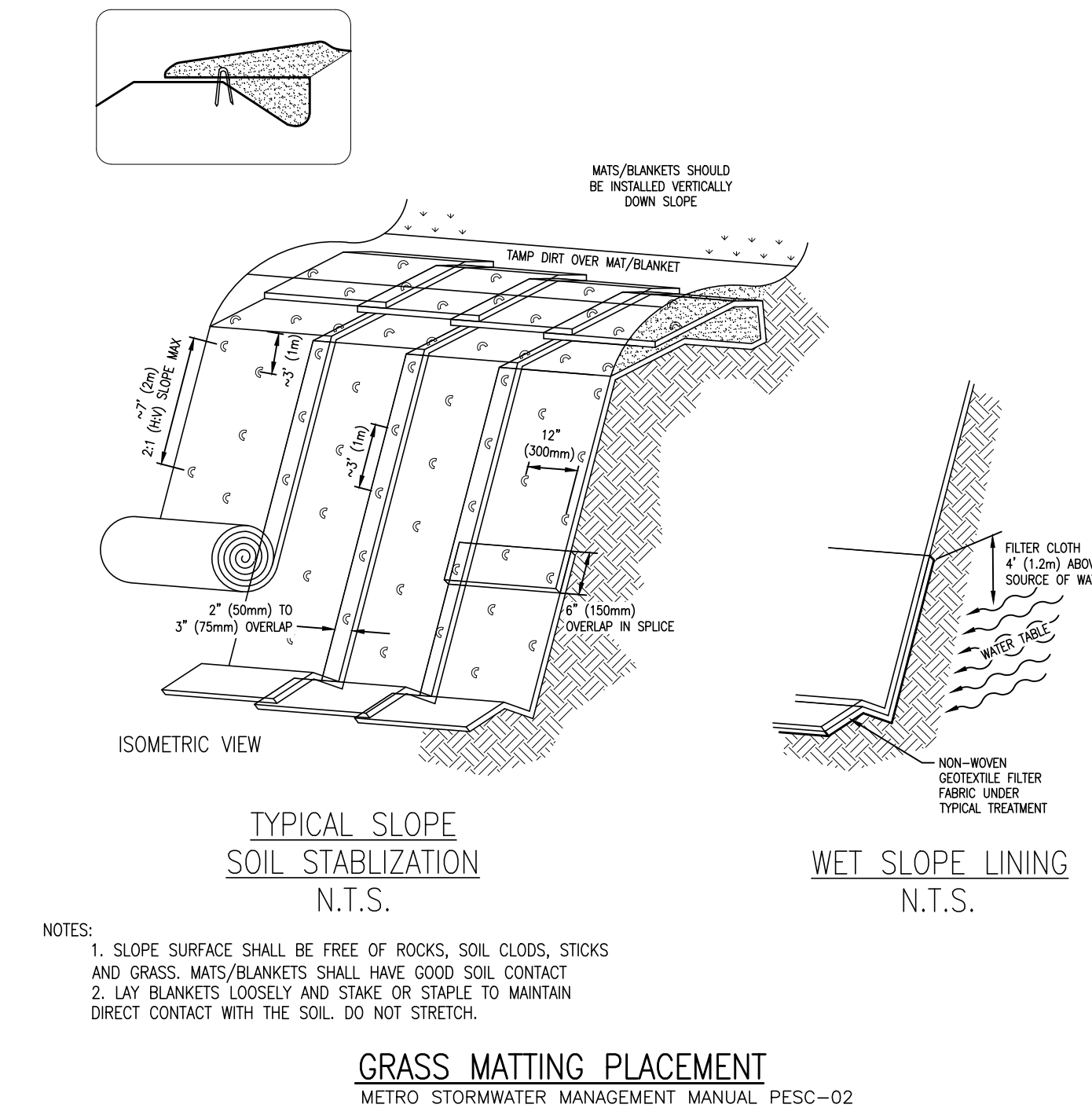
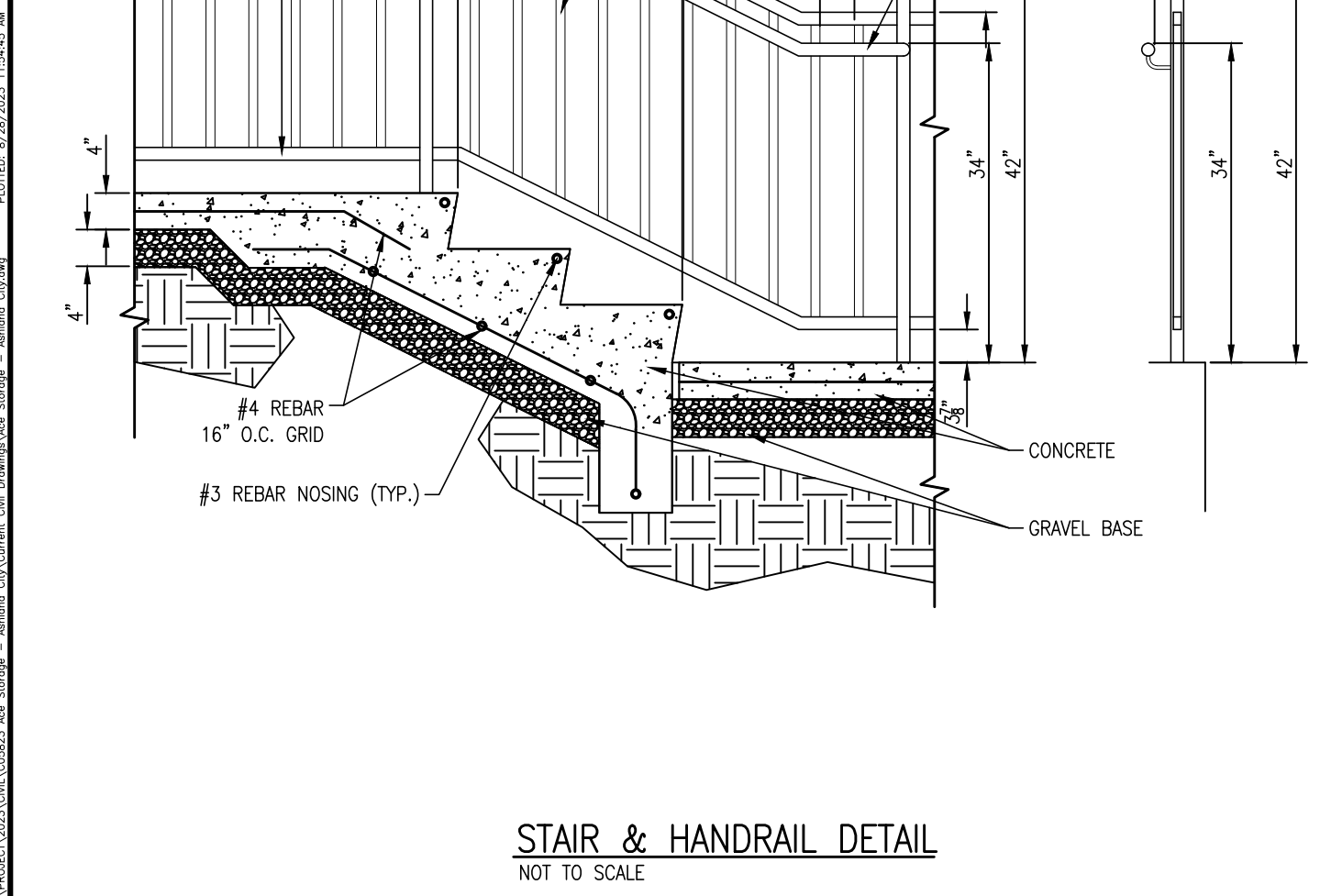
CALL 811 NATIONWIDE

Know what's below. Call before you dig.

IT IS THE CONTRACTORS RESPONSIBILITY TO CONTACT UTILITY COMPANIES PRIOR TO ANY CONSTRUCTION. THE UTILITIES SHOWN ON THESE PLANS ARE APPROXIMATE AND POSSIBLY INCOMPLETE. THEREFORE CERTIFICATION TO THE LOCATION OF ALL UNDERGROUND UTILITIES IS WITHHELD.

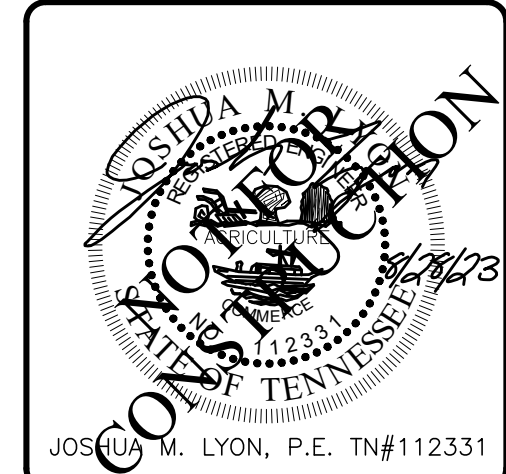
LEGEND:

W 8" SS 6" 12" 18" 24" 30" 36" 42" 48" 54" 60" 66" 72" 78" 84" 90" 96" 102" 108" 114" 120" 126" 132" 138" 144" 150" 156" 162" 168" 174" 180" 186" 192" 198" 204" 210" 216" 222" 228" 234" 240" 246" 252" 258" 264" 270" 276" 282" 288" 294" 300" 306" 312" 318" 324" 330" 336" 342" 348" 354" 360" 366" 372" 378" 384" 390" 396" 402" 408" 414" 420" 426" 432" 438" 444" 450" 456" 462" 468" 474" 480" 486" 492" 498" 504" 510" 516" 522" 528" 534" 540" 546" 552" 558" 564" 570" 576" 582" 588" 594" 600" 606" 612" 618" 624" 630" 636" 642" 648" 654" 660" 666" 672" 678" 684" 690" 696" 702" 708" 714" 720" 726" 732" 738" 744" 750" 756" 762" 768" 774" 780" 786" 792" 798" 804" 810" 816" 822" 828" 834" 840" 846" 852" 858" 864" 870" 876" 882" 888" 894" 900" 906" 912" 918" 924" 930" 936" 942" 948" 954" 960" 966" 972" 978" 984" 990" 996" 1002" 1008" 1014" 1020" 1026" 1032" 1038" 1044" 1050" 1056" 1062" 1068" 1074" 1080" 1086" 1092" 1098" 1104" 1110" 1116" 1122" 1128" 1134" 1140" 1146" 1152" 1158" 1164" 1170" 1176" 1182" 1188" 1194" 1200" 1206" 1212" 1218" 1224" 1230" 1236" 1242" 1248" 1254" 1260" 1266" 1272" 1278" 1284" 1290" 1296" 1302" 1308" 1314" 1320" 1326" 1332" 1338" 1344" 1350" 1356" 1362" 1368" 1374" 1380" 1386" 1392" 1398" 1404" 1410" 1416" 1422" 1428" 1434" 1440" 1446" 1452" 1458" 1464" 1470" 1476" 1482" 1488" 1494" 1500" 1506" 1512" 1518" 1524" 1530" 1536" 1542" 1548" 1554" 1560" 1566" 1572" 1578" 1584" 1590" 1596" 1602" 1608" 1614" 1620" 1626" 1632" 1638" 1644" 1650" 1656" 1662" 1668" 1674" 1680" 1686" 1692" 1698" 1704" 1710" 1716" 1722" 1728" 1734" 1740" 1746" 1752" 1758" 1764" 1770" 1776" 1782" 1788" 1794" 1800" 1806" 1812" 1818" 1824" 1830" 1836" 1842" 1848" 1854" 1860" 1866" 1872" 1878" 1884" 1890" 1896" 1902" 1908" 1914" 1920" 1926" 1932" 1938" 1944" 1950" 1956" 1962" 1968" 1974" 1980" 1986" 1992" 1998" 2004" 2010" 2016" 2022" 2028" 2034" 2040" 2046" 2052" 2058" 2064" 2070" 2076" 2082" 2088" 2094" 2100" 2106" 2112" 2118" 2124" 2130" 2136" 2142" 2148" 2154" 2160" 2166" 2172" 2178" 2184" 2190" 2196" 2202" 2208" 2214" 2220" 2226" 2232" 2238" 2244" 2250" 2256" 2262" 2268" 2274" 2280" 2286" 2292" 2298" 2304" 2310" 2316" 2322" 2328" 2334" 2340" 2346" 2352" 2358" 2364" 2370" 2376" 2382" 2388" 2394" 2400" 2406" 2412" 2418" 2424" 2430" 2436" 2442" 2448" 2454" 2460" 2466" 2472" 2478" 2484" 2490" 2496" 2502" 2508" 2514" 2520" 2526" 2532" 2538" 2544" 2550" 2556" 2562" 2568" 2574" 2580" 2586" 2592" 2598" 2604" 2610" 2616" 2622" 2628" 2634" 2640" 2646" 2652" 2658" 2664" 2670" 2676" 2682" 2688" 2694" 2700" 2706" 2712" 2718" 2724" 2730" 2736" 2742" 2748" 2754" 2760" 2766" 2772" 2778" 2784" 2790" 2796" 2802" 2808" 2814" 2820" 2826" 2832" 2838" 2844" 2850" 2856" 2862" 2868" 2874" 2880" 2886" 2892" 2898" 2904" 2910" 2916" 2922" 2928" 2934" 2940" 2946" 2952" 2958" 2964" 2970" 2976" 2982" 2988" 2994" 3000" 3006" 3012" 3018" 3024" 3030" 3036" 3042" 3048" 3054" 3060" 3066" 3072" 3078" 3084" 3090" 3096" 3102" 3108" 3114" 3120" 3126" 3132" 3138" 3144" 3150" 3156" 3162" 3168" 3174" 3180" 3186" 3192" 3198" 3204" 3210" 3216" 3222" 3228" 3234" 3240" 3246" 3252" 3258" 3264" 3270" 3276" 3282" 3288" 3294" 3300" 3306" 3312" 3318" 3324" 3330" 3336" 3342" 3348" 3354" 3360" 3366" 3372" 3378" 3384" 3390" 3396" 3402" 3408" 3414" 3420" 3426" 3432" 3438" 3444" 3450" 3456" 3462" 3468" 3474" 3480" 3486" 3492" 3498" 3504" 3510" 3516" 3522" 3528" 3534" 3540" 3546" 3552" 3558" 3564" 3570" 3576" 3582" 3588" 3594" 3600" 3606" 3612" 3618" 3624" 3630" 3636" 3642" 3648" 3654" 3660" 3666" 3672" 3678" 3684" 3690" 3696" 3702" 3708" 3714" 3720" 3726" 3732" 3738" 3744" 3750" 3756" 3762" 3768" 3774" 3780" 3786" 3792" 3798" 3804" 3810" 3816" 3822" 3828" 3834" 3840" 3846" 3852" 3858" 3864" 3870" 3876" 3882" 3888" 3894" 3900" 3906" 3912" 3918" 3924" 3930" 3936" 3942" 3948" 3954" 3960" 3966" 3972" 3978" 3984" 3990" 3996" 4002" 4008" 4014" 4020" 4026" 4032" 4038" 4044" 4050" 4056" 4062" 4068" 4074" 4080" 4086" 4092" 4098" 4104" 4110" 4116" 4122" 4128" 4134" 4140" 4146" 4152" 4158" 4164" 4170" 4176" 4182" 4188" 4194" 4200" 4206" 4212" 4218" 4224" 4230" 4236" 4242" 4248" 4254" 4260" 4266" 4272" 4278" 4284" 4290" 4296" 4302" 4308" 4314" 4320" 4326" 4332" 4338" 4344" 4350" 4356" 4362" 4368" 4374" 4380" 4386" 4392" 4398" 4404" 4410" 4416" 4422" 4428" 4434" 4440" 4446" 4452" 4458" 4464" 4470" 4476" 4482" 4488" 4494" 4500" 4506" 4512" 4518" 4524" 4530" 4536" 4542" 4548" 4554" 4560" 4566" 4572" 4578" 4584" 4590" 4596" 4602" 4608" 4614" 4620" 4626" 4632" 4638" 4644" 4650" 4656" 4662" 4668" 4674" 4680" 4686" 4692" 4698" 4704" 4710" 4716" 4722" 4728" 4734" 4740" 4746" 4752" 4758" 4764" 4770" 4776" 4782" 4788" 4794" 4800" 4806" 4812" 4818" 4824" 4830" 4836" 4842" 4848" 4854" 4860" 4866" 4872" 4878" 4884" 4890" 4896" 4902" 4908" 4914" 4920" 4926" 4932" 4938" 4944" 4950" 4956" 4962" 4968" 4974" 4980" 4986" 4992" 4998" 5004" 5010" 5016" 5022" 5028" 5034" 5040" 5046" 5052" 5058" 5064" 5070" 5076" 5082" 5088" 5094" 5100" 5106" 5112" 5118" 5124" 5130" 5136" 5142" 5148" 5154" 5160" 5166" 5172" 5178" 5184" 5190" 5196" 5202" 5208" 5214" 5220" 5226" 5232" 5238" 5244" 5250" 5256" 5262" 5268" 5274" 5280" 5286" 5292" 5298" 5304" 5310" 5316" 5322" 5328" 5334" 5340" 5346" 5352" 5358" 5364" 5370" 5376" 5382" 5388" 5394" 5400" 5406" 5412" 5418" 5424" 5430" 5436" 5442" 5448" 5454" 5460" 5466" 5472" 5478" 5484" 5490" 5496" 5502" 5508" 5514" 5520" 5526" 5532" 5538" 5544" 5550" 5556" 5562" 5568" 5574" 5580" 5586" 5592" 5598" 5604" 5610" 5616" 5622" 5628" 5634" 5640" 5646" 5652" 5658" 5664" 5670" 5676" 5682" 5688" 5694" 5700" 5706" 5712" 5718" 5724" 5730" 5736" 5742" 5748" 5754" 5760" 5766" 5772" 5778" 5784" 5790" 5796" 5802" 5808" 5814" 5820" 5826" 5832" 5838" 5844" 5850" 5856" 5862" 5868" 5874" 5880" 5886" 5892" 5898" 5904" 5910" 5916" 5922" 5928" 5934" 5940" 5946" 5952" 5958" 5964" 5970" 5976" 5982" 5988" 5994" 6000" 6006" 6012" 6018" 6024" 6030" 6036" 6042" 6048" 6054" 6060" 6066" 6072" 6078" 6084" 6090" 6096" 6102" 6108" 6114" 6120" 6126" 6132" 6138" 6144" 6150" 6156" 6162" 6168" 6174" 6180" 6186" 6192" 6198" 6204" 6210" 6216" 6222" 6228" 6234" 6240" 6246" 6252" 6258" 6264" 6270" 6276" 6282" 6288" 6294" 6300" 6306" 6312" 6318" 6324" 6330" 6336" 6342" 6348" 6354" 6360" 6366" 6372" 6378" 6384" 6390" 6396" 6402" 6408" 6414" 6420" 6426" 6432" 6438" 6444" 6450" 6456" 6462" 6468" 6474" 6480" 6486" 6492" 6498" 6504" 6510" 6516" 6522" 6528" 6534" 6540" 6546" 6552" 6558" 6564" 6570" 6576" 6582" 6588" 6594" 6600" 6606" 6612" 6618" 6624" 6630" 6636" 6642" 6648" 6654" 6660" 6666" 6672" 6678" 6684" 6690" 6696" 6702" 6708" 6714" 6720" 6726" 6732" 6738" 6744" 6750" 6756" 6762" 6768" 6774" 6780" 6786" 6792" 6798" 6804" 6810" 6816" 6822" 6828" 6834" 6840" 6846" 6852" 6858" 6864" 6870" 6876" 6882" 6888" 6894" 6900" 6906" 6912" 6918" 6924" 6930" 6936" 6942" 6948" 6954" 6960" 6966" 6972" 6978" 6984" 6990" 6996" 7002" 7008" 7014" 7020" 7026" 7032" 7038" 7044" 7050" 7056" 7062" 7068" 7074" 7080" 7086" 7092" 7098" 7104" 7110" 7116" 7122" 7128" 7134" 7140" 7146" 7152" 7158" 7164" 7170" 7176" 7182" 7188" 7194" 7200" 7206" 7212" 7218" 7224" 7230" 7236" 7242" 7248" 7254" 7260" 7266" 7272" 7278" 7284" 7290" 7296" 7302" 7308" 7314" 7320" 7326" 7332" 7338" 7344" 7350" 7356" 7362" 7368" 7374" 7380" 7386" 7392" 7398" 7404" 7410" 7416" 7422" 7428" 7434" 7440" 7446" 7452" 7458" 7464" 7470" 7476" 7482" 7488" 7494" 7500" 7506" 7512" 7518" 7524" 7530" 7536" 7542" 7548" 7554" 7560" 7566" 7572" 7578" 7584" 7590" 7596" 7602" 7608" 7614" 7620" 7626" 7632" 7638" 7644" 7650" 7656" 7662" 7668" 7674" 7680" 7686" 7692" 7698" 7704" 7710" 7716" 7722" 7728" 7734" 7740" 7746" 7752" 7758" 7764" 7770" 7776" 7782" 7788" 7794" 7800" 7806" 7812" 7818" 7824" 7830" 7836" 7842" 7848" 7854" 7860" 7866" 7872" 7878" 7884" 7890" 7896" 7902" 7908" 7914" 7920" 7926" 7932" 7938" 7944" 7950" 7956" 7962" 7968" 7974" 7980" 7986" 7992" 7998" 8004" 8010" 8016" 8022" 8028" 8034" 8040" 8046" 8052" 8058" 8064" 8070" 8076" 8082" 8088" 8094" 8100" 8106" 8112" 8118" 8124" 8130" 8136" 8142" 8148" 8154" 8160" 8166" 8172" 8178" 8184" 8190" 8196" 8202" 8208" 8214" 8220" 8226" 8232" 8238" 8244" 8250" 8256" 8262" 8268" 8274" 8280" 8286" 8292" 8298" 8304" 8310" 8316" 8322" 8328" 8334" 8340" 8346" 8352" 8358" 8364" 8370" 8376" 8382" 8388" 8394" 8400" 8406" 8412" 8418" 8424" 8430" 8436" 8442" 8448" 8454" 8460" 8466" 8472" 8478" 8484" 8490" 8496" 8502" 8508" 8514" 8520" 8526" 8532" 8538" 8544" 8550" 8556" 8562" 8568" 8574" 8580" 8586" 8592" 8598" 8604" 8610" 8616" 8622" 8628" 8634" 8640" 8646" 8652" 8658" 8664" 8670" 8676" 8682" 8688" 8694" 8700" 8706" 8712" 8718" 8724" 8730" 8736" 8742" 8748" 8754" 8760" 8766" 8772" 8778" 8784" 8790" 8796" 8802" 8808" 8814" 8820" 8826" 8832" 8838" 8844" 8850" 8856" 8862" 8868" 8874" 8880" 8886" 8892" 8898" 8904" 8910" 8916" 8922" 8928" 8934" 8940" 8946" 8952" 8958" 8964" 8970" 8976" 8982" 8988" 8994" 9000" 9006" 9012" 9018" 9024" 9030" 9036" 9042" 9048" 9054" 9060" 9066" 9072" 9078" 9084" 9090" 9096" 9102" 9108" 9114" 9120" 9126" 9132" 9138" 9144" 9150" 9156" 9162" 9168" 9174" 9180" 9186" 9192" 9198" 9204" 9210" 9216" 9222" 9228" 9234" 9240" 9246" 9252" 9258" 9264" 9270" 9276" 9282" 9288" 9294" 9300" 9306" 9312" 9318" 9324" 9330" 9336" 9342" 9348" 9354" 9360" 9366" 9372" 9378" 9384" 9390" 9396" 9402" 9408" 9414" 9420" 9426" 9432" 9438" 9444" 9450" 9456" 9462" 9468" 9474" 9480" 9486" 9492" 9498" 9504" 9510" 9516" 9522" 9528" 9534" 9540" 9546" 9552" 9558" 9564" 9570" 9576" 9582" 9588" 9594" 9600" 9606" 9612" 9618" 9624" 9630" 9636" 9642" 9648" 9654" 9660" 9666" 9672" 9678" 9684" 9690" 9696" 9702" 9708" 9714" 9720" 9726" 9732" 9738" 9744" 9750" 9756" 9762" 9768" 9774" 9780" 9786" 9792" 9798" 9804" 9810" 9816" 9822" 9828" 9834" 9840" 9846" 9852" 9858" 9864" 9870" 9876" 9882" 9888" 9894" 9900" 9906" 9912" 9918" 9924" 9930" 9936" 9942" 9948" 9954" 9960" 9966" 9972" 9978" 9984" 9990" 9996" 10002" 10008" 10014" 10020" 10026" 10032" 10038" 10044" 10050" 10056" 10062" 10068" 10074" 10080" 10086" 10092" 10098" 10104" 10110" 10116" 10122" 10128" 10134" 10140" 10146" 10152" 10158" 10164" 10

The logo features the company name "KLOBBER ENGINEERING SERVICES" in a large, bold, serif font, centered within a stylized, light gray oval shape. The oval is composed of two curved lines that meet at the top and bottom, creating a sense of depth and shadow.

KLOBBER
ENGINEERING SERVICES

SERVING CLIENTS WITH CIVIL, ENGINEERING & LAND DEVELOPMENT SERVICES
3556 TOM AUSTIN HWY. SUITE 110 SPRINGFIELD, TN 37772
PHONE: (615) 382-2000 FAX: (888) 373-4485
www.klobbereng.com

[illegible]

ACE
MINI STORAGE

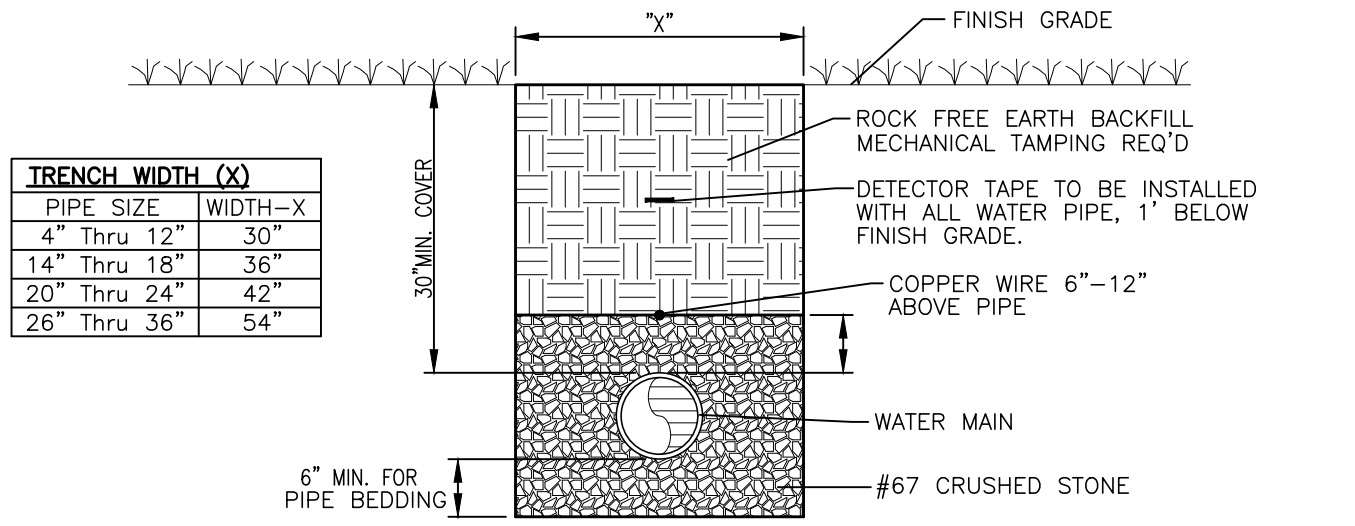
ASHLAND CITY, TN
CHEATHAM COUNTY

DRAWN BY:	CJN
CHECKED BY:	JML
DATE:	8/31/23
PROJECT NO.:	C05823

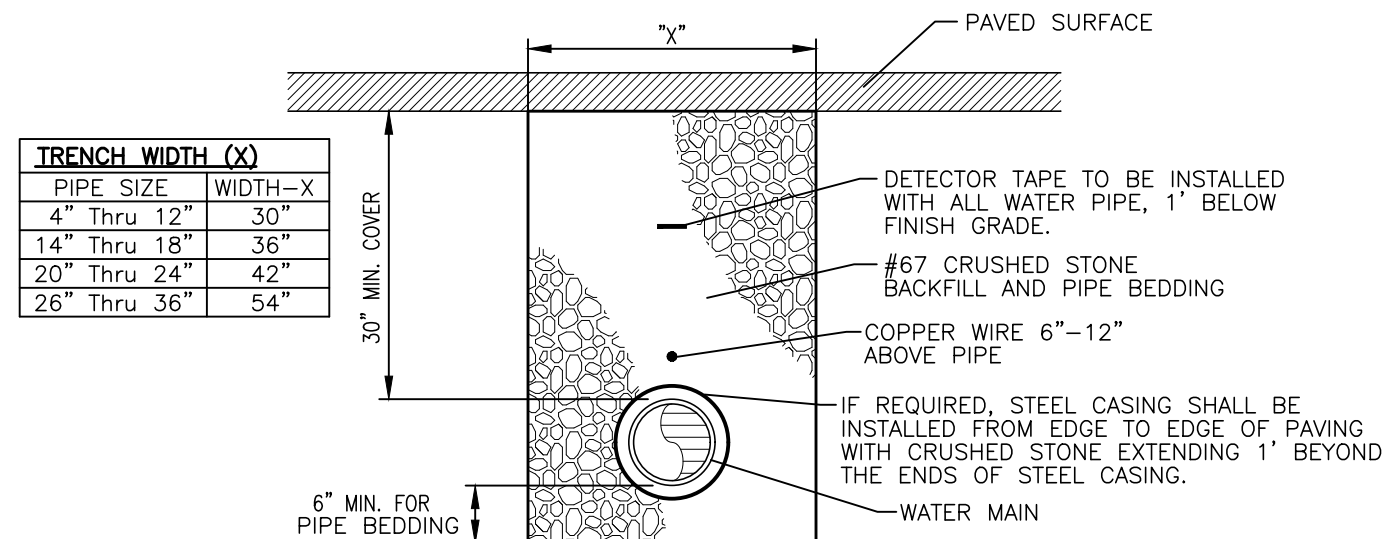
CONSTRUCTION DETAILS

SHEET NUMBER C2.01

TRENCH WIDTH (X)	
PIPE SIZE	WIDTH-X
4" Thru 12"	30"
14" Thru 18"	36"
20" Thru 24"	42"
26" Thru 36"	54"

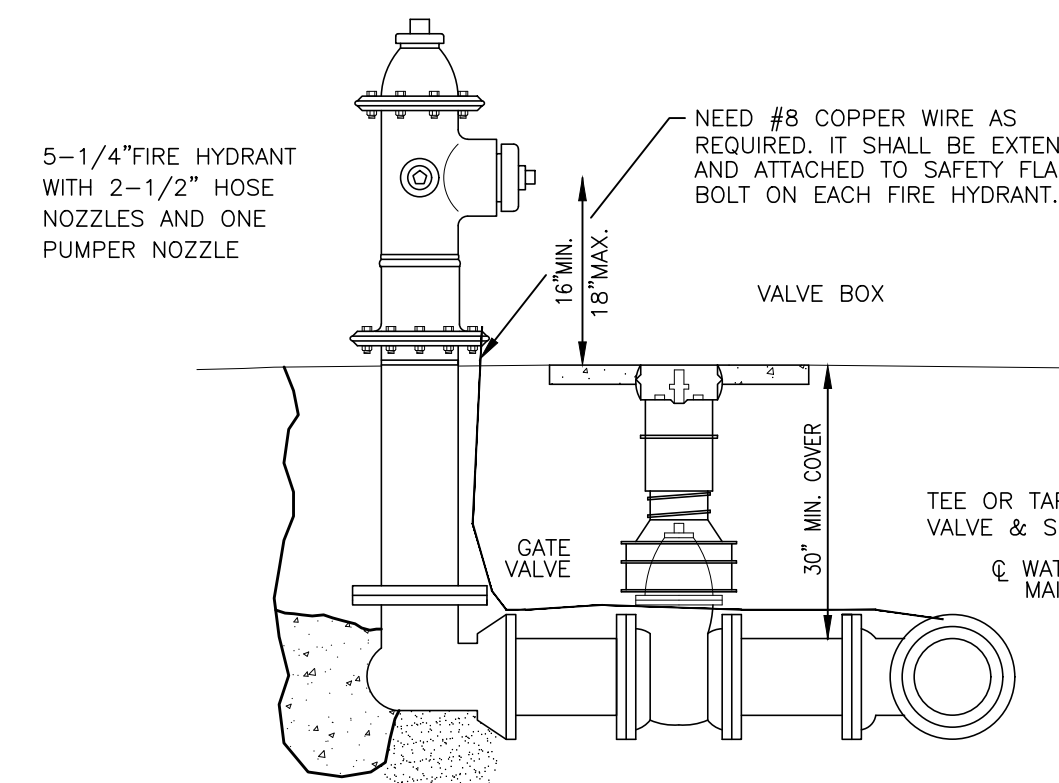


NOT TO SCALE



TYPICAL BEDDING & BACKFILL IN ROADWAY

NOT TO SCALE



PLACE CONC. KICKER
BEHIND HYDRANT, MIN.
OF 8" DEEP, 15" HIGH
AND FULL WIDTH OF
TRENCH (KICKER TO BEAR
ON UNDISTURBED EARTH)

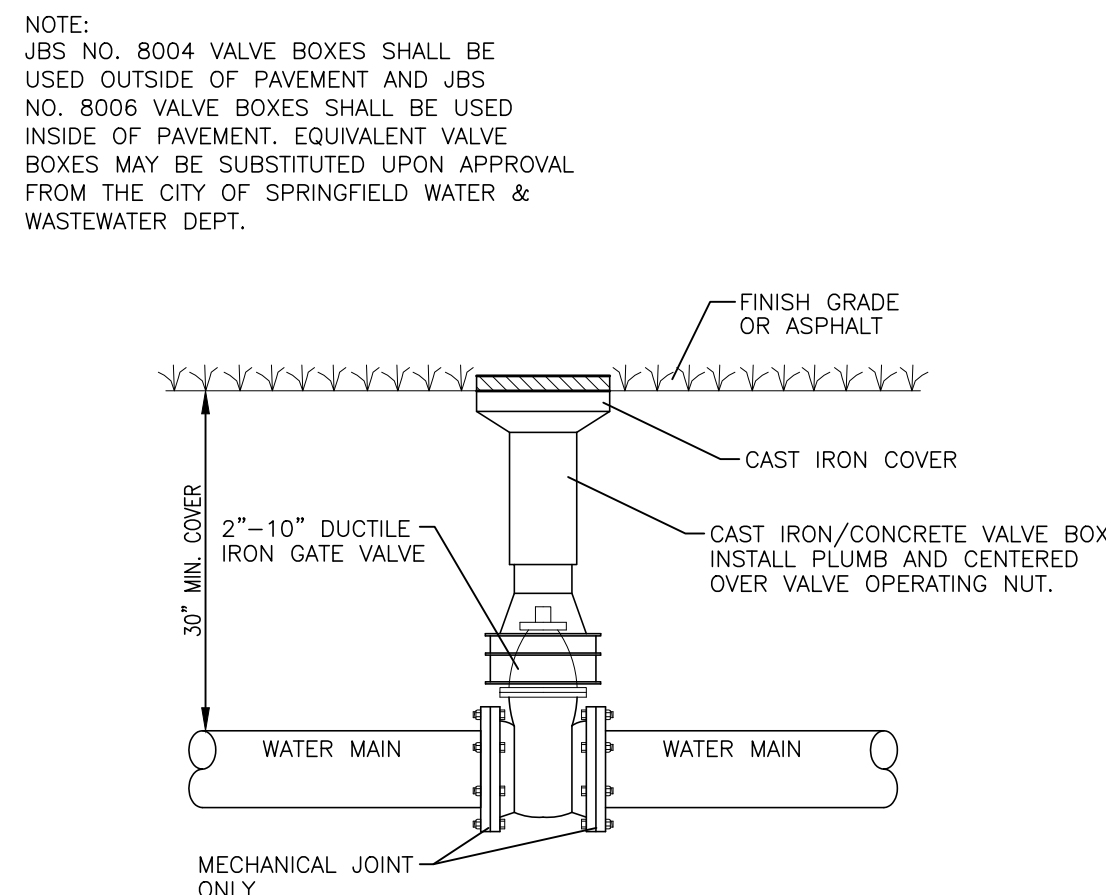
18" MIN. LAYING LENGTH,
48" MAX. LAYING LENGTH
ON NEW CONSTRUCTION

MIN. OF 3 CU. FEET OF FINE GRAVEL
UNDER HYDRANT FOR DRAINAGE, WITH
DRAIN HOLE UNOBSTRUCTED.

ONLY M&H MODEL 129, MUELLER SUPER CENTURION, OR AMERICAN
DARLING MODEL B-84-B WILL BE ACCEPTED BY THE SWWD.

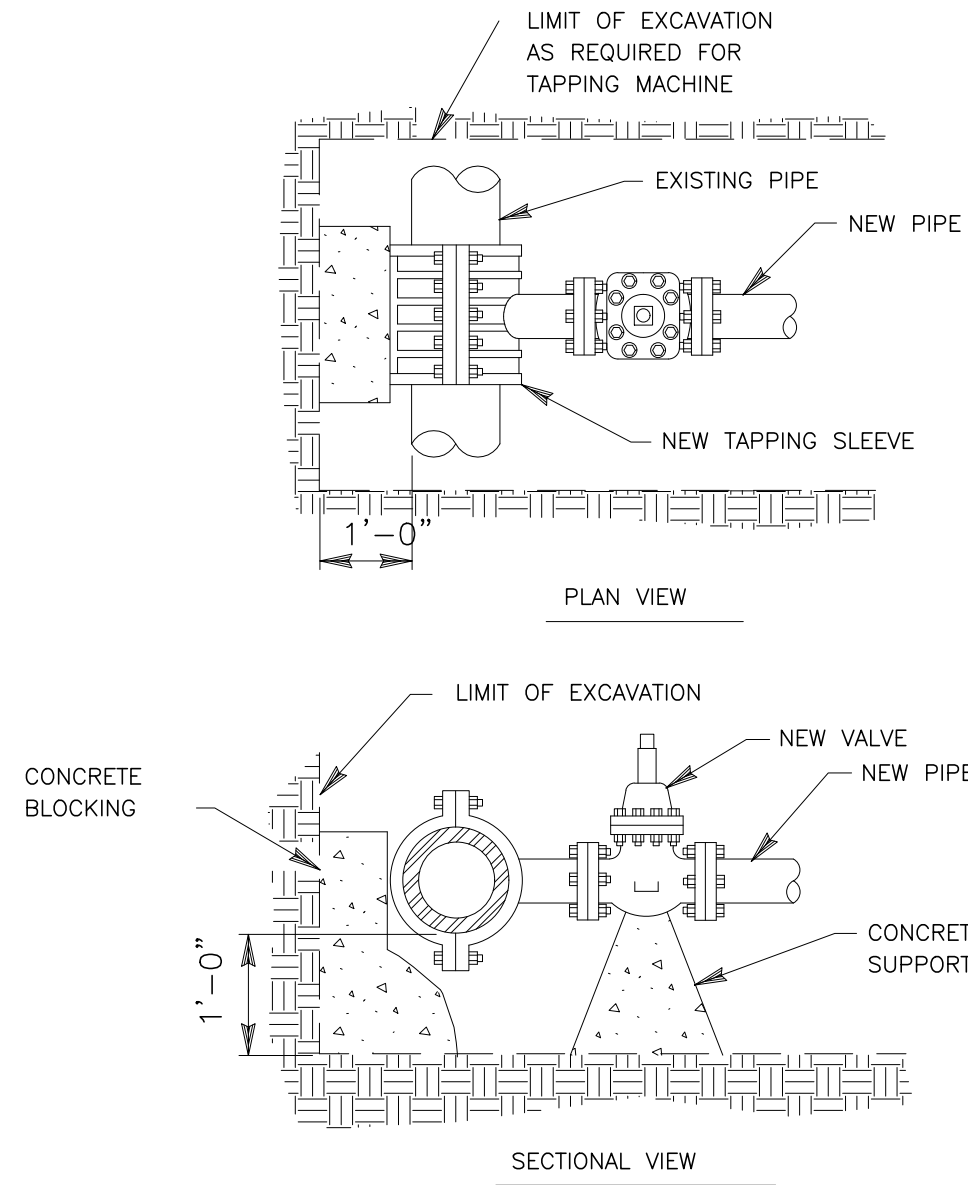
TYPICAL FIRE HYDRANT

NOT TO SCALE



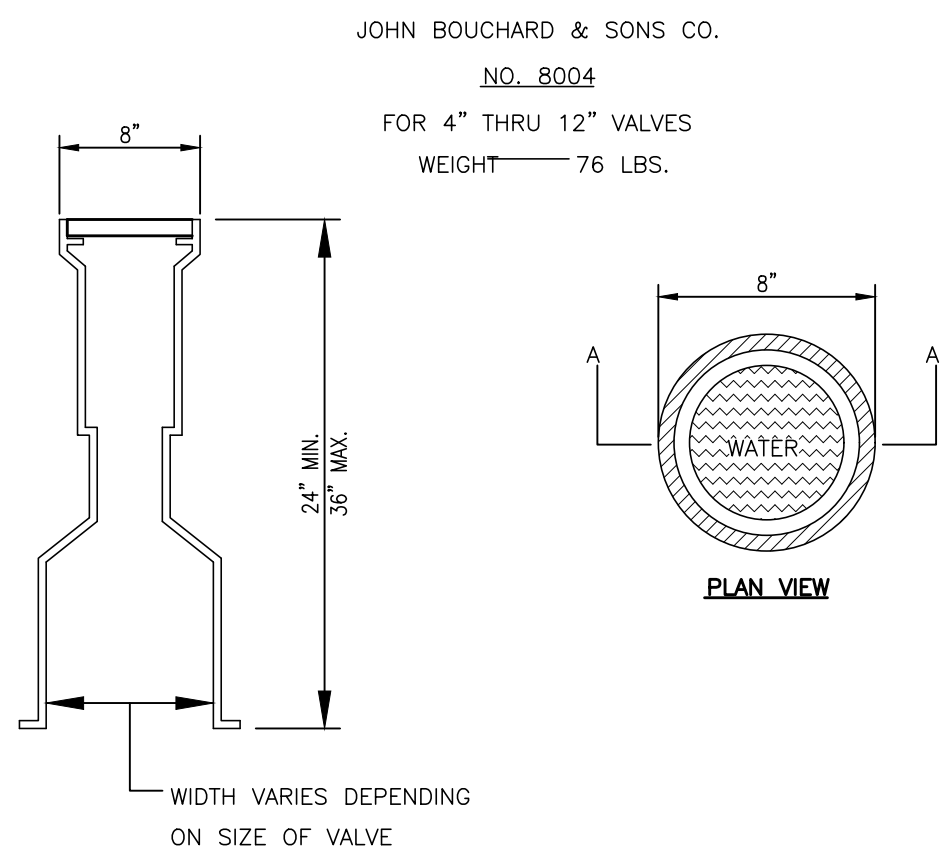
TYPICAL GATE VALVE DETAIL

NOT TO SCALE



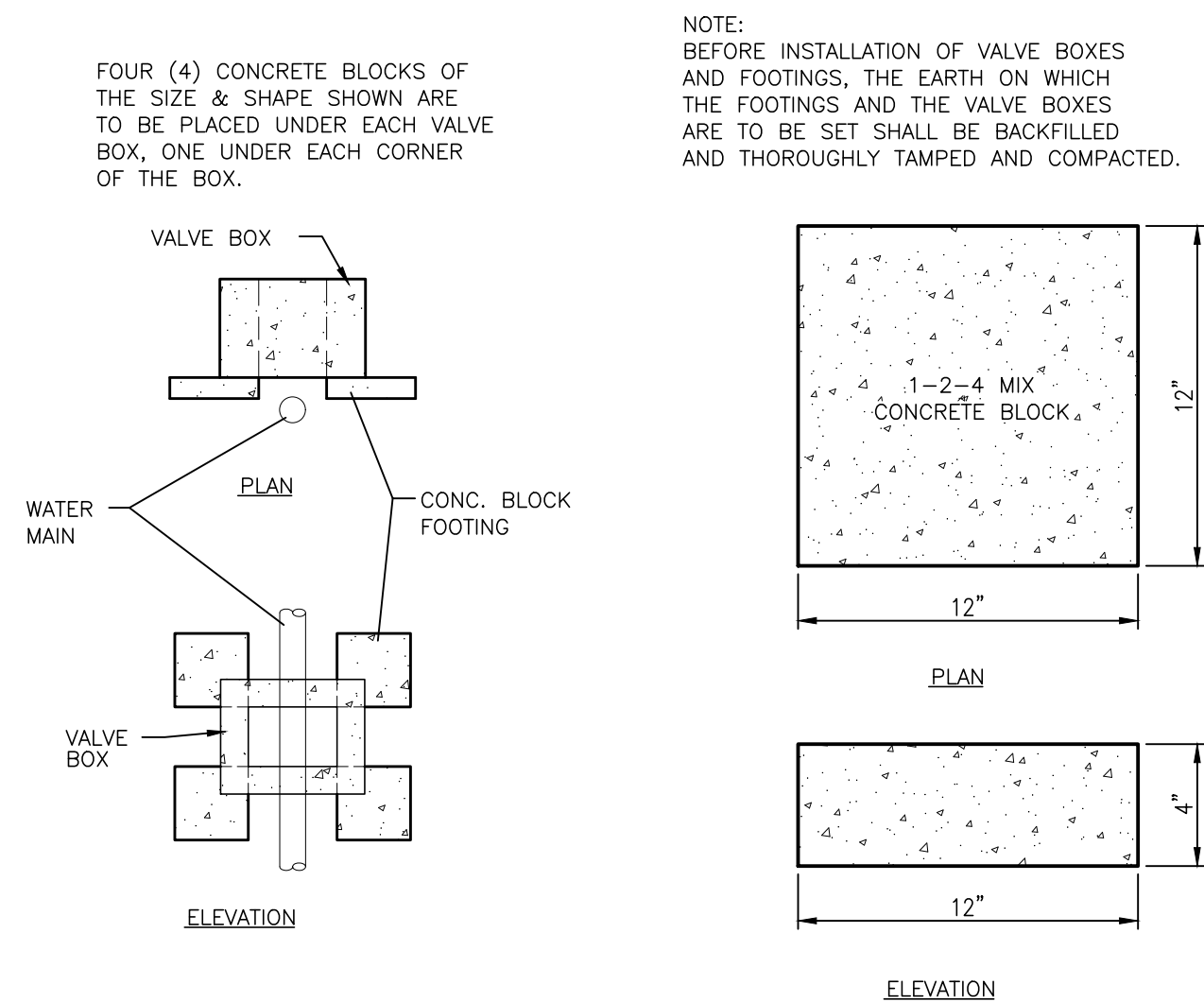
TAPPING SLEEVE AND VALVE

NOT TO SCALE



TYPICAL VALVE BOX

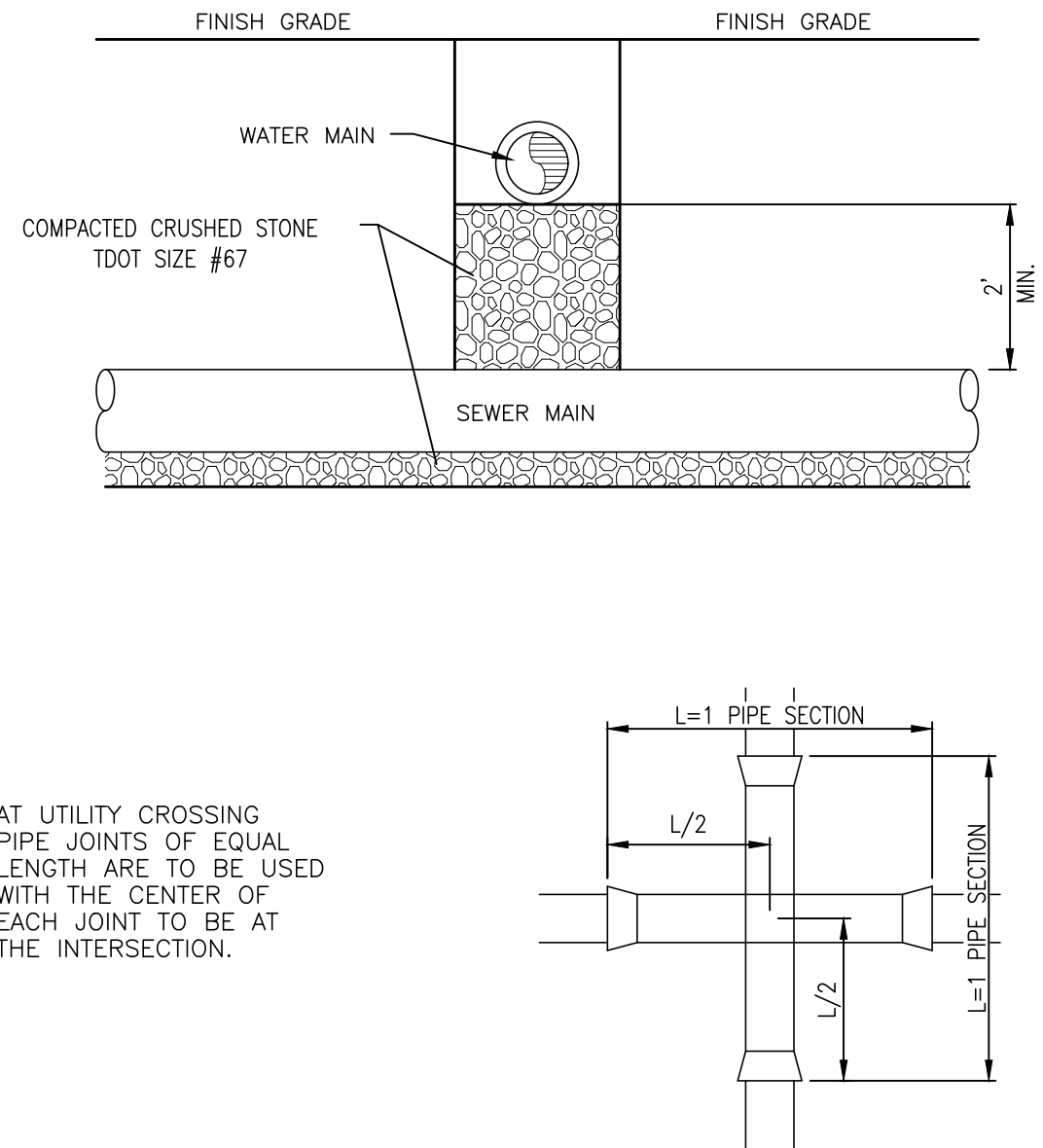
NOT TO SCALE



CONCRETE VALVE BOX FOOTING FOR

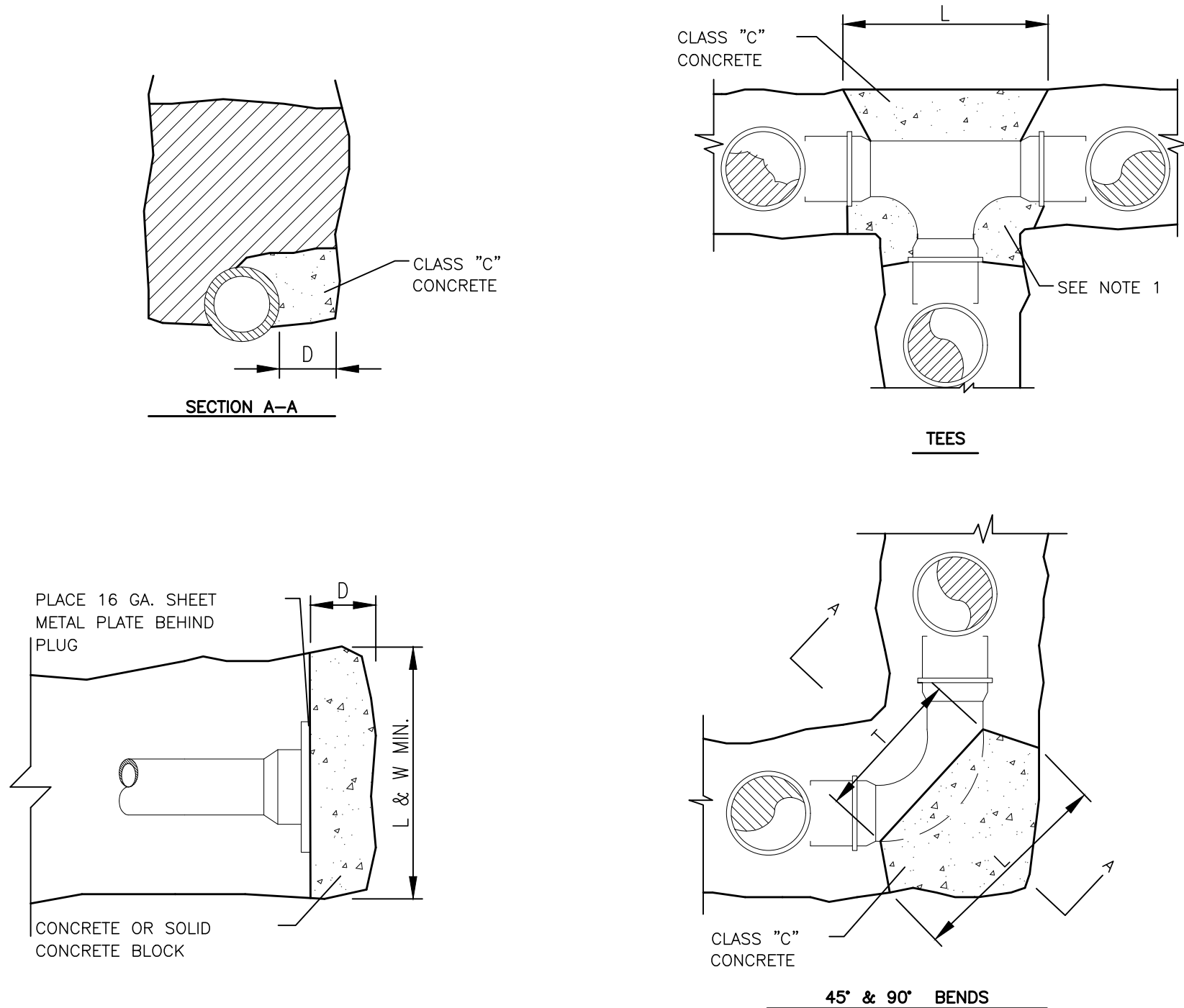
NOT TO SCALE

JBS NO. 8006 OR EQUAL



TYPICAL UTILITY CROSSING

NOT TO SCALE



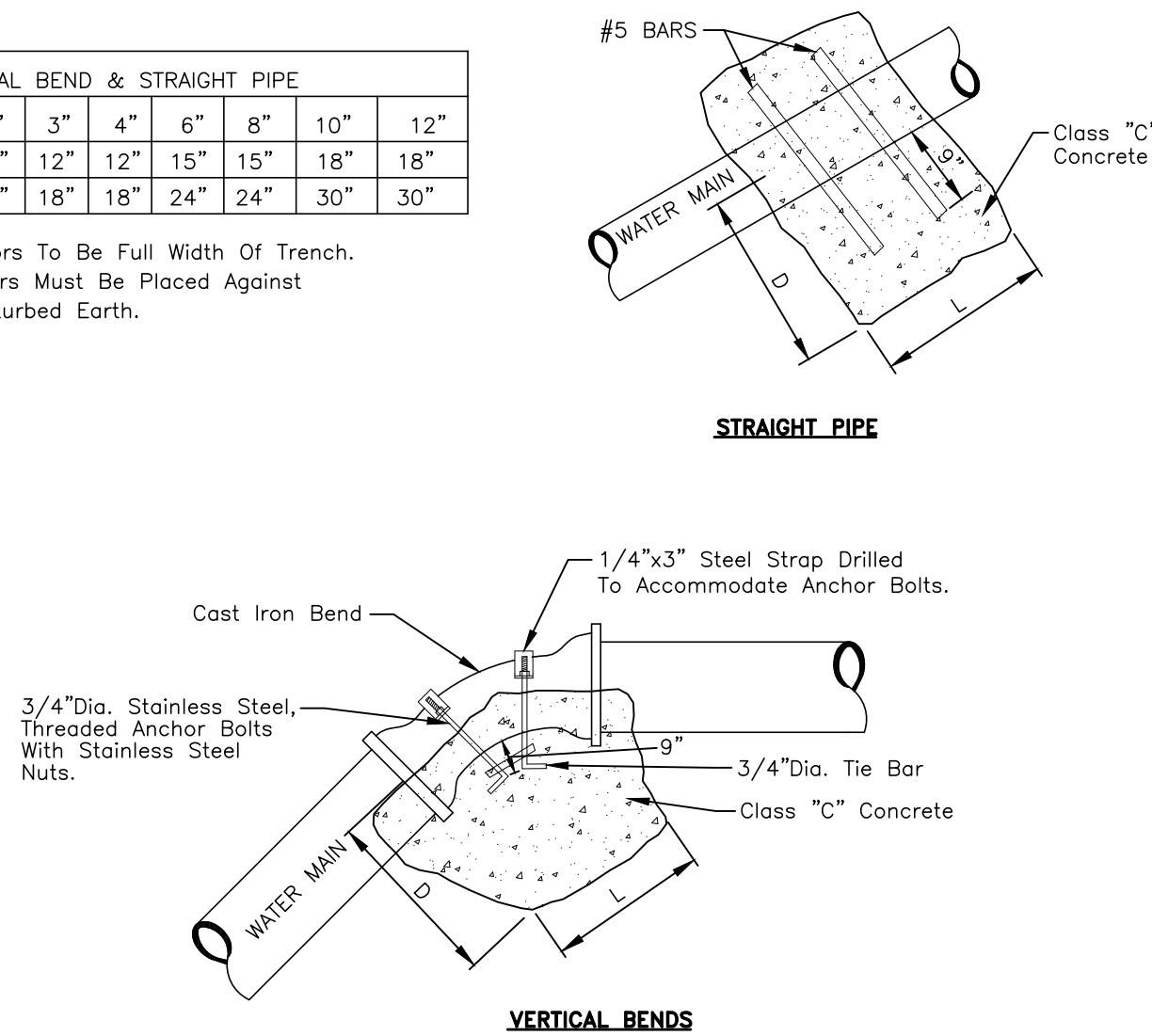
NOTE 1:
RESTRAINED JOINTS REQUIRED:
CONCRETE THRUST BLOCKS MAY
BE USED IN ADDITION TO
RESTRAINED JOINTS, PER 3.3.1
AND 3.3.2.

NOTE 2:
FELT PAPER OR PLASTIC SHEET
SHALL BE INSTALLED AROUND TEE
BEFORE KICKER IS POURED
TO PROTECT HARDWARE.

PLUGS & TEES							
SIZE	2"	3"	4"	6"	8"	10"	12"
D	6"	6"	6"	6"	6"	6"	6"
L&W	14"	16"	18"	20"	22"	24"	24"

° (45) EIGHTH BENDS							
SIZE	2"	3"	4"	6"	8"	10"	12"
D	6"	6"	6"	6"	6"	6"	6"
L	12"	14"	16"	18"	20"	22"	24"
T	10"	12"	14"	16"	16"	18"	18"

° (90) QUARTER BENDS							
SIZE	2"	3"	4"	6"	8"	10"	12"
D	6"	6"	6"	8"	10"	12"	12"
L	15"	18"	21"	24"	27"	30"	34"
T	10"	12"	14"	16"	18"	20"	22"



TYPICAL CONCRETE ANCHOR BLOCK

NOT TO SCALE

[illegible]

ACE MINI STORAGE

ASHLAND CITY, TN
CHEATHAM COUNTY

DRAWN BY:	CJN
CHECKED BY:	JML
DATE:	8/31/23
PROJECT NO.:	C05823

WATERLINE DETAILS

SHEET NUMBER

C2.02