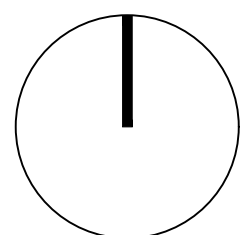


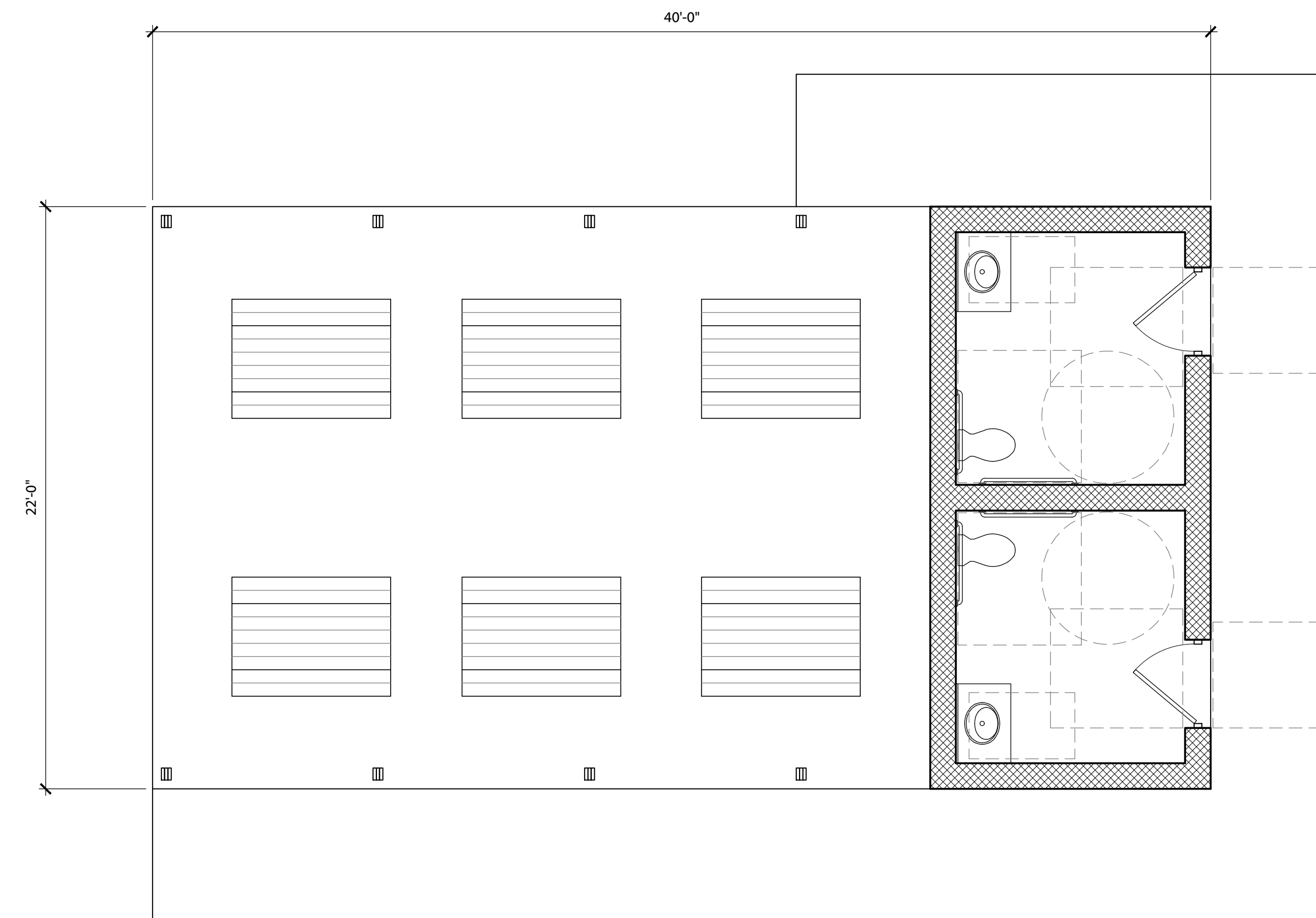


NORTH



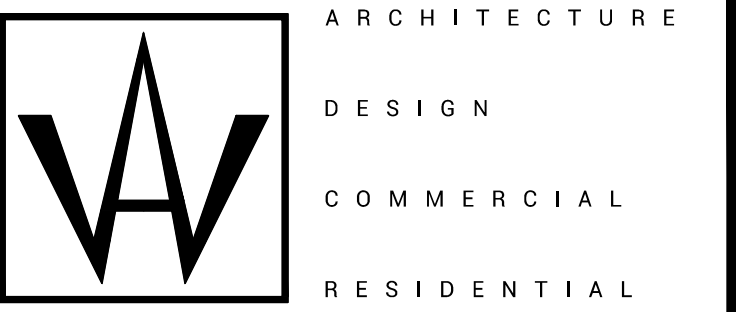
**1 SCHEMATIC SITE PLAN**

A2.1 SCALE: 1/16" = 1'-0"



**2 SCHEMATIC FLOOR PLAN**

A2.1 SCALE: 1/4" = 1'-0"



ARCHITECTURE  
DESIGN  
COMMERCIAL  
RESIDENTIAL

Joshua A. Wright Architect  
8061 Highway 41A  
Cedar Hill, Tennessee 37032  
P: 931-217-0479  
O: 931-539-1941  
E: josh@jawaac.com  
W: jawaac.com

PROJECT:  
A NEW PAVILION AND PARKING  
PROPOSAL  
FOR CALDWELL PARK  
THE TOWN OF ASHLAND CITY  
ASHLAND CITY, TENNESSEE 37015

SHEET DESCRIPTION:

CONSULTANT:

DATE:

REVISION DATE:

REVISION DATE:

REVISION DATE:

DRAWN BY:

PROJECT NUMBER: 2021 - 23

© copyright Joshua A. Wright Architect 2020

A1.0