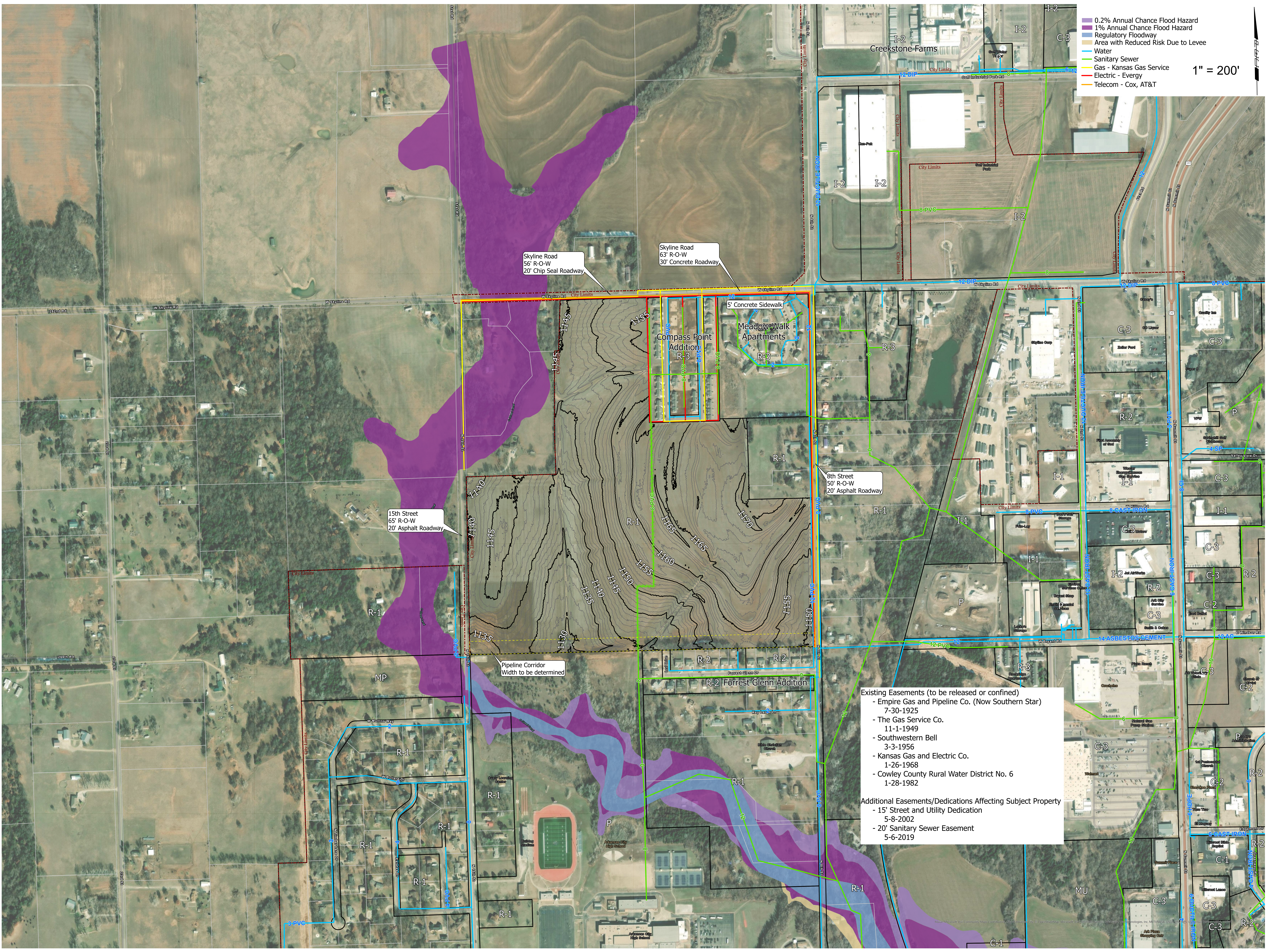


0.2% Annual Chance Flood Hazard  
 1% Annual Chance Flood Hazard  
 Regulatory Floodway  
 Area with Reduced Risk Due to Levee  
 Water  
 Sanitary Sewer  
 Gas - Kansas Gas Service  
 Electric - Evergy  
 Telecom - Cox, AT&T

1" = 200'



Existing Easements (to be released or confined)

- Empire Gas and Pipeline Co. (Now Southern Star) 7-30-1925
- The Gas Service Co. 11-1-1949
- Southwestern Bell 3-3-1956
- Kansas Gas and Electric Co. 1-26-1968
- Cowley County Rural Water District No. 6 1-28-1982

Additional Easements/Dedications Affecting Subject Property

- 15' Street and Utility Dedication 5-8-2002
- 20' Sanitary Sewer Easement 5-6-2019