



# Quote

Date: 6/27/2024

Quote to: Mr. Wade Magnus  
City of Arkansas, KS

Job: Summit & Skyline

Qty	Description	Unit Price	Line Total
1	<b>Smart Micro Radar System</b>	\$21,940.00	\$21,940.00
	This system would use Three new TRUGRD Stream detectors with Stop Bar & Advanced a COM HUB/SDLC cabinet Interface Unit. 1000' Cable included		
1	Yunex Blade Controller	\$4,750.00	\$4,750.00
	This system should be able to use existing cable from video cameras		
	Technical assistance is included.		
		Total	\$26,690.00

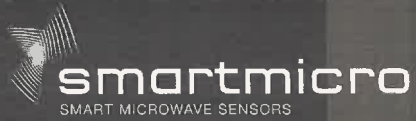
Delivery is 3 - 5 weeks after receipt of order.  
Delivery dates are subject to change as material shortages arise.

Pricing is Valid for 30 days.

By: **James Tamplin**  
[jtamplin@gadestrafic.com](mailto:jtamplin@gadestrafic.com)

Sales tax is not included. Payment terms are Net 30 days after invoice date. Accepted payment methods are cash, check or ACH. Credit Card payments are accepted with a 4% convenience fee added to the invoice total.

PO Box 9003, Wichita, KS 67277 - 316-943-1219

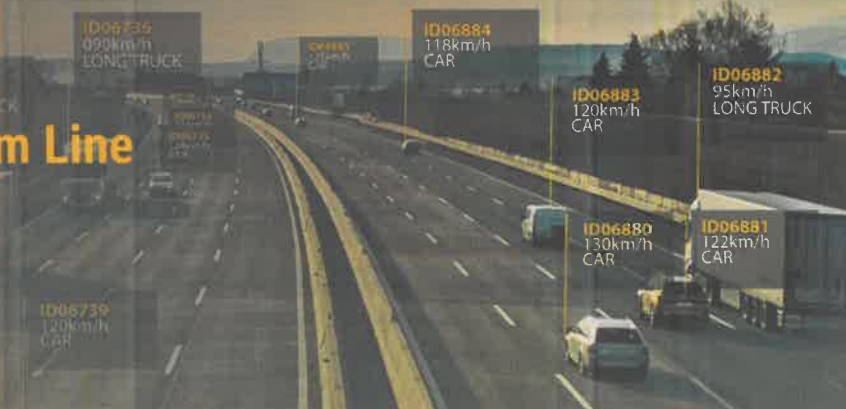


# Traffic Management Sensors

## TRUGRD<sup>®</sup> STREAM | Premium Line

### 3D/ UHD+ RESOLUTION

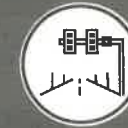
combined with video



### RECOMMENDED FOR:



SMART CITIES



INTERSECTION MANAGEMENT



HIGHWAY MANAGEMENT



STATIONARY ENFORCEMENT



BRIDGE MONITORING



RED-LIGHT ENFORCEMENT



TUNNEL MONITORING

### RADAR TECHNOLOGY COMBINED WITH VIDEO

- ✓ Detects moving and stopped traffic
- ✓ Seamless object tracking
- ✓ Fail-safe features
- ✓ Multi-lane, multi-object detection
- ✓ Supreme low-light performance camera
- ✓ Works in all weather conditions

THE MOST ADVANCED DETECTION TECHNOLOGY

## TRUGRD® Stream

### CAMERA MODULE

Resolution, Frame Rate	Color camera with IR cut filter and supreme low light performance 1920 x 1080 px, up to 30 fps
Video Codec	H.265, H.264, MJPEG

### PERFORMANCE

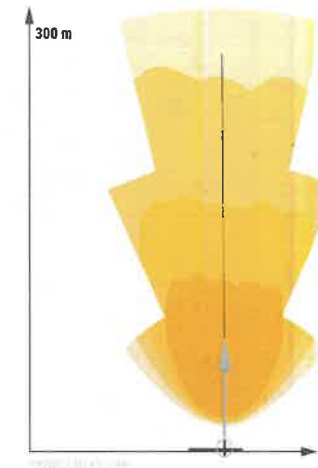
Operating Frequency <sup>1</sup>	24.0 ... 24.25 GHz
Resolution	3D measurement with UHD+ resolution
Detection Range Pedestrian	125 m   410 ft
Detection Range Passenger Car	260 m   853 ft
Detection Range min ... max	1.5 ... 300 m   4.9 ... 984 ft
Range Separation	2 m   6.6 ft
Range Accuracy	< ± 0.25 m   < ± 0.82 ft
Speed min ... max	-320 ... +320 km/h   -199 ... +199 mph
Speed Separation	0.23 m/s
Speed Accuracy	< ± 0.1 m/s
Number of Lanes	Up to 12 lanes
Field of View Azimuth	-55° ... +55°
Field of View Elevation	-10° ... +10°
Angle Separation Azimuth	< 6°
Angle Accuracy Azimuth	< 0.5°

### MECHANICAL

Weight	1575 g   55.5 oz
Dimensions	213 x 155 x 32 mm or 8.4 x 6.1 x 1.3 in + connector

### GENERAL

Update Cycle Time	50 <sup>2</sup> ms
Operating Voltage / Power Consumption	7...32 V / 11 W
Operating Temperature	-40...+74°C   -40...+165°F
Interfaces	Ethernet <sup>3</sup>
Connector	Hirose LF10 series
IP	67



<sup>1</sup>In certain regions, frequency interval starts at 24.05 GHz

<sup>2</sup>Depending on the application: Speed Enforcement 50 ms, Intersection and Highway Management 100 ms

<sup>3</sup>Needs port for video output.

