



May 20, 2026

Randy Frazer
City of Arkansas City
118 W. Central Ave
Arkansas City, KS 67005

Reference: Project Name: Arkansas City East Pressure Zone Improvements
Supplemental Agreement No: 1
Original Contract Date: September 19, 2024
PEC Project No.: 237346-002

Dear Mr. Frazer:

This Supplemental Agreement between the Client and Professional Engineering Consultants, P.A. (PEC), modifies the above referenced Agreement, and any other previous Supplemental Agreements as may be noted herein.

A. Modification of Scope:

- 1. Topographic Survey and Easement
 - a. Additional survey and easement required to relocate the waterline due to KDOT's 7-ft ROW offset requirement, as the designated corridor is too congested with existing utilities and trees for installation.
- 2. Geotechnical Borings (4 @ 50 ft.)
 - a. Borings required to determine subsurface conditions for the planned directional drill under the bridge and river.

B. Time of Performance:

- 1. The completion date will be five weeks from Authorization to Proceed.

C. Payment Provisions:

- 1. Original Contract Amount: \$357,000.00
- 2. The contract amount will increase by this Supplemental Agreement: \$ 19,750.00
- 3. The new contract amount including this Supplemental Agreement: \$376,750.00

D. Authorization to Proceed:

- 1. Return receipt of this executed Supplemental Agreement will be considered our authorization to proceed.

Sincerely,
PROFESSIONAL ENGINEERING CONSULTANTS, P.A.


Michael D. Kelsey, PE
VP | Municipal & W/WW Engineering
GAS:cem

ACCEPTED:

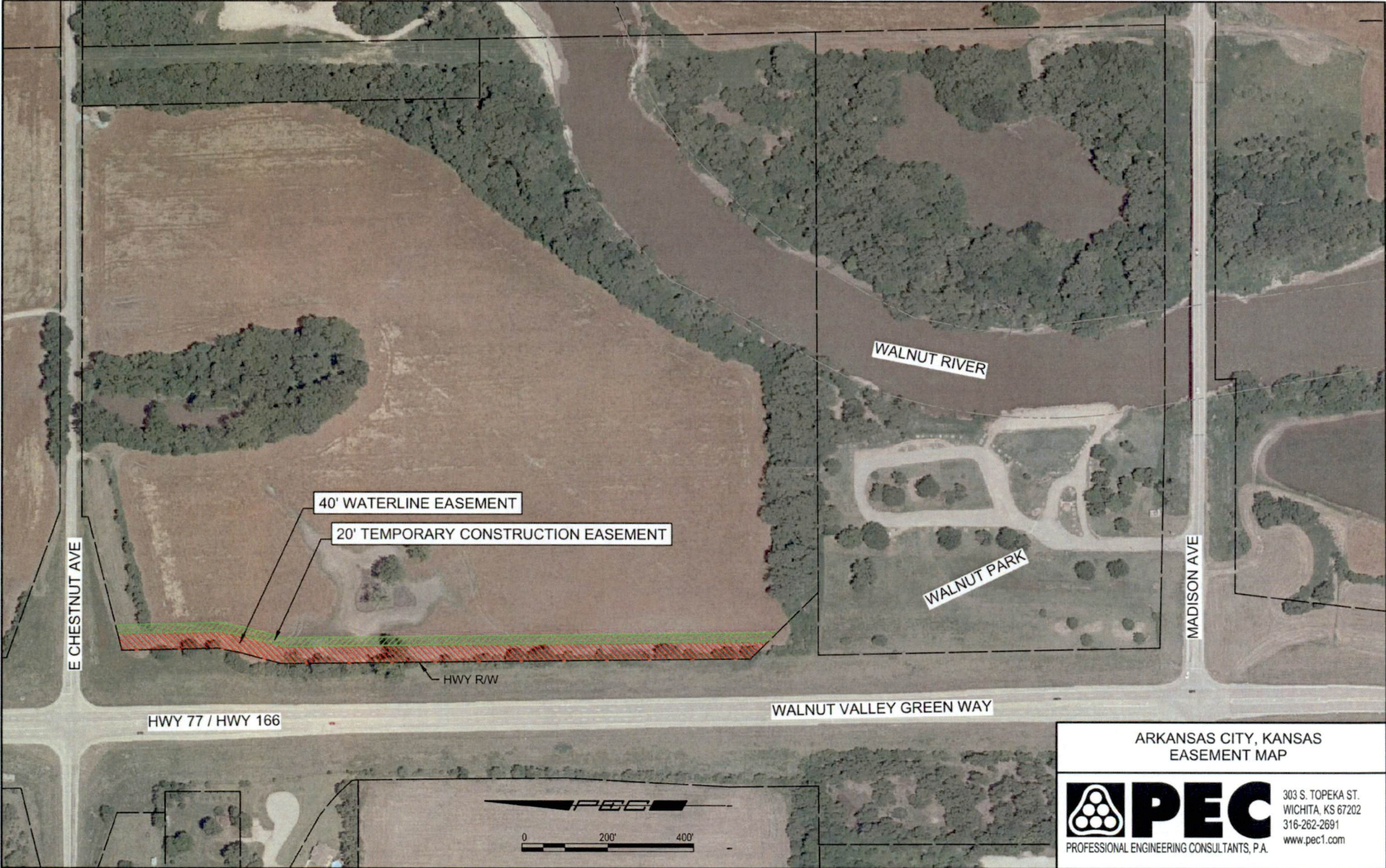
CITY OF ARKANSAS CITY

By: 

Title: City Manager

Date: 5-20-26

EXHIBIT C



C:\DC\DC\DC\PEC_HUB\237346-002 - ARKANSAS CITY E PRESSURE ZONE PROJECT
FILES\DESIGN\MISC\CELLANE\02527346-02\EASEMENTS.DWG

ARKANSAS CITY, KANSAS
EASEMENT MAP



303 S. TOPEKA ST.
WICHITA, KS 67202
316-262-2691
www.pec1.com