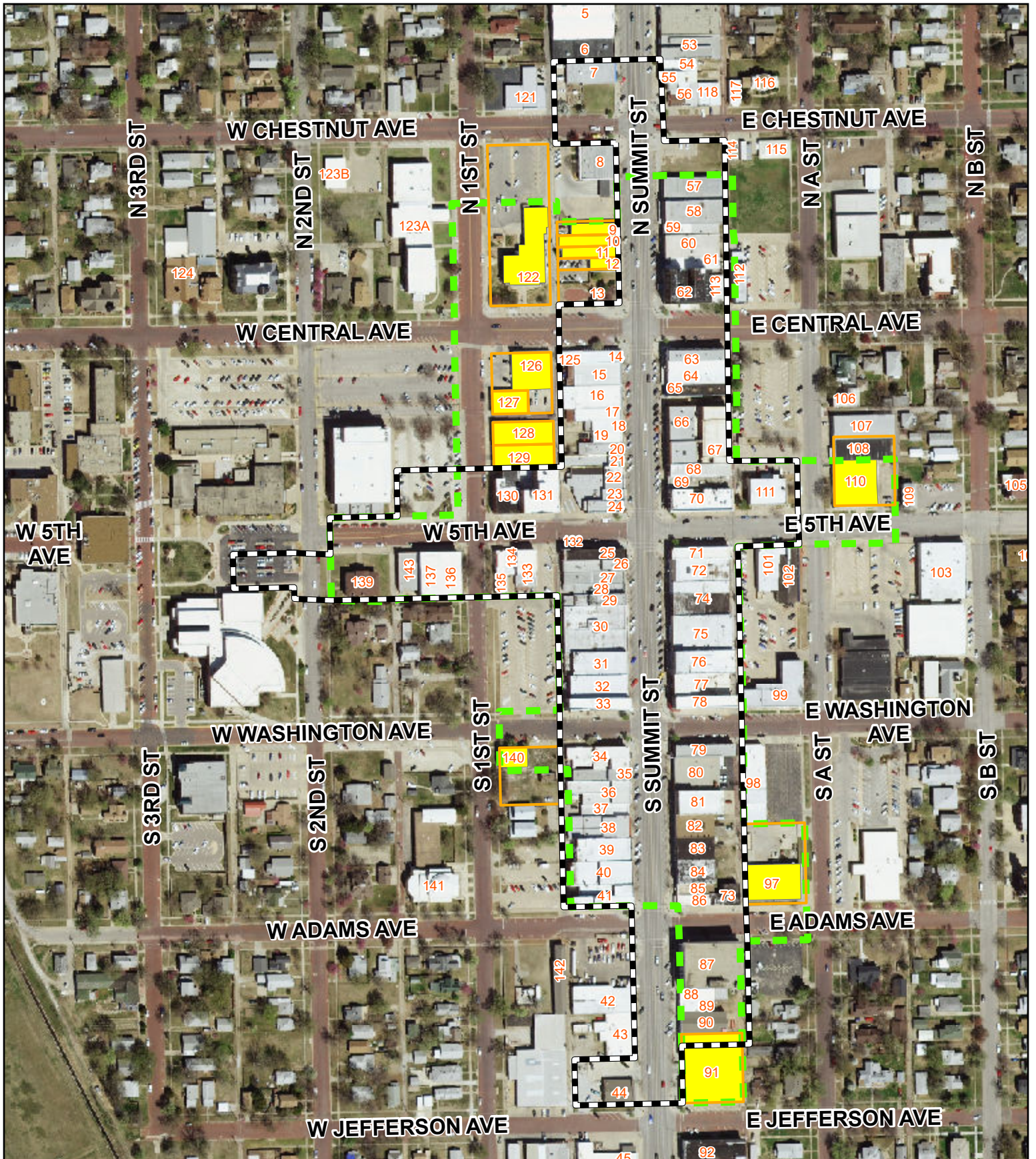


PROPOSED CHANGES TO HISTORIC DISTRICT



Produced by the City of Arkansas City GIS using the best available data to date. The city makes no warranty or representation, expressed or implied, with respect to the data displayed.

Produced: February 07, 2019

 Existing Historic District

 Properties to be Added

 Proposed Historic District

 Buildings to be Added to District

