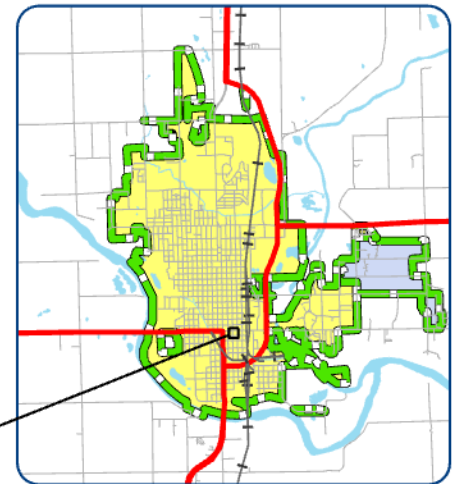
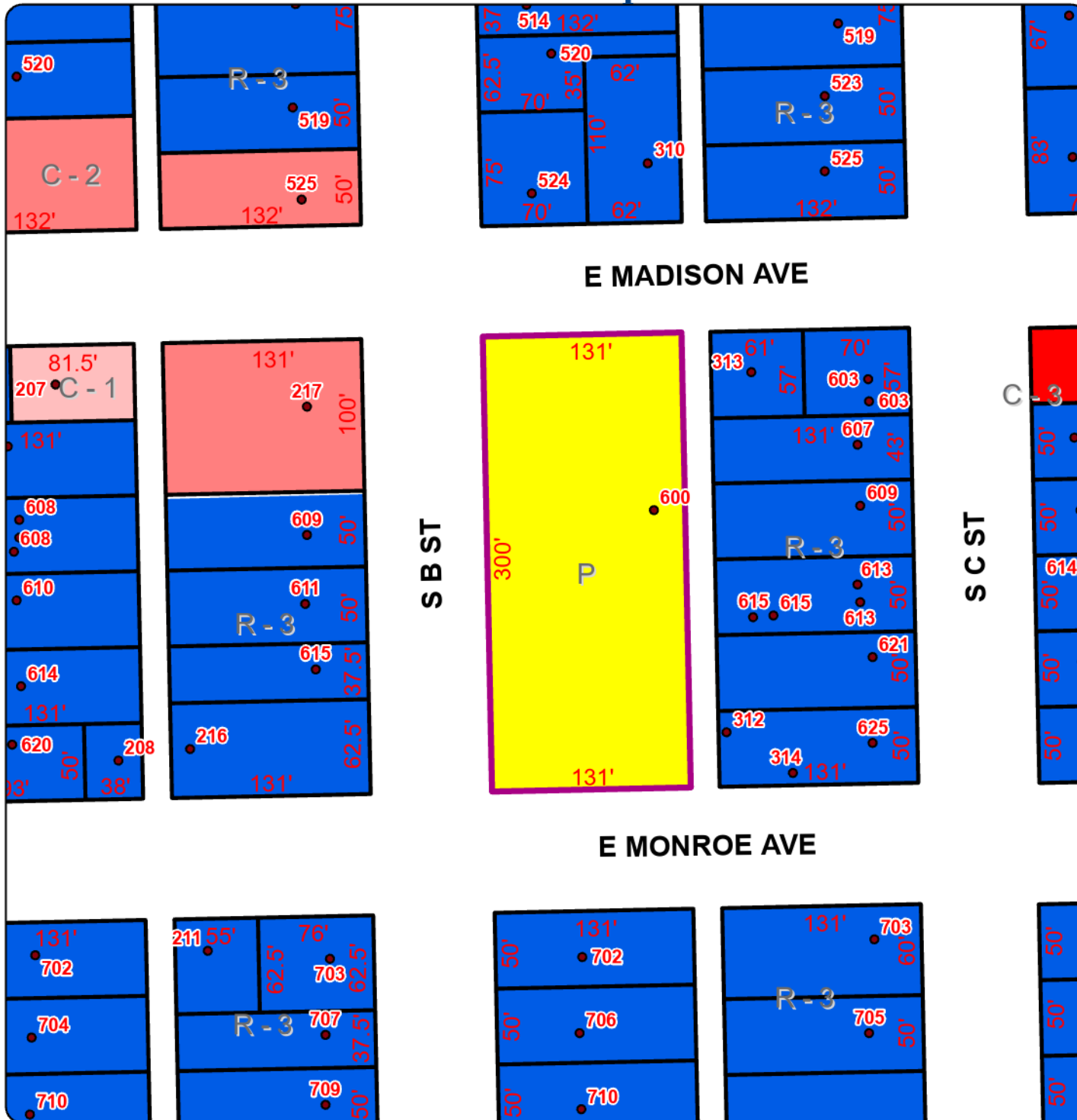


# Rezone Request



Request for a rezone at 600 S B Street  
 from a  
**P Public Use District**  
 to a  
**C-1 Office and Service Business District**

- City Limits
  - Rezone
  - Property Lines
- Zoning
- R-3, High Density Residential
  - C-1, Office and Service Business District
  - C-2, Restricted Commercial District
  - C-3, General Commercial District
  - P, Public Use District

Produced by the  
 City of Arkansas City GIS  
 using the best available  
 data to date.  
 Created: December 06, 2021

