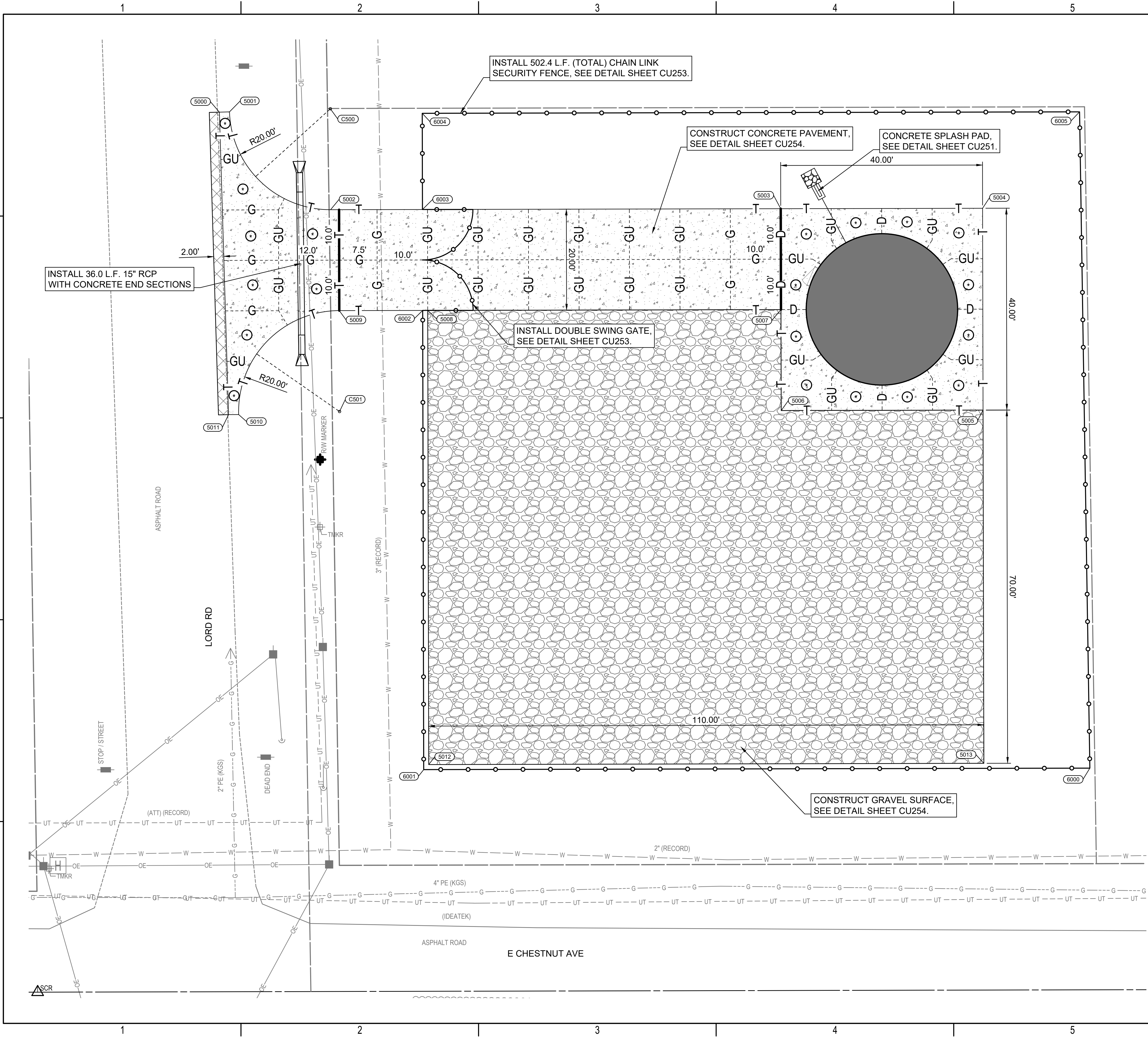


SAVED 9/30/2025 1:08:18 PM BY JAKE EXLEY
 PLOTTED 10/14/2025 2:06:12 PM BY KURTIS DEKAT
 C:\DC\ACCD\CS\PEC HUB\237346-002 ARKANSAS CITY E PRESSURE ZONE\PROJECT
 FILES\DESIGN\237346-002 CU202.DWG



PAVING LEGEND

- PROPOSED CONCRETE PAVEMENT
- PROPOSED GRAVEL SURFACE
- PROPOSED MILL AND OVERLAY
- PROPOSED FENCE
- PROPOSED STORM SEWER

GEOMETRY LEGEND

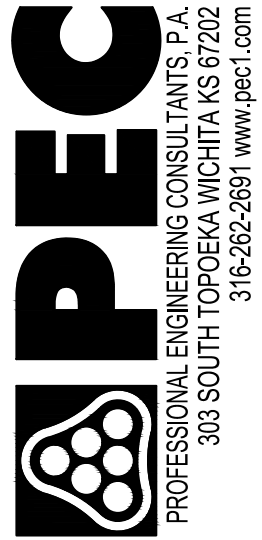
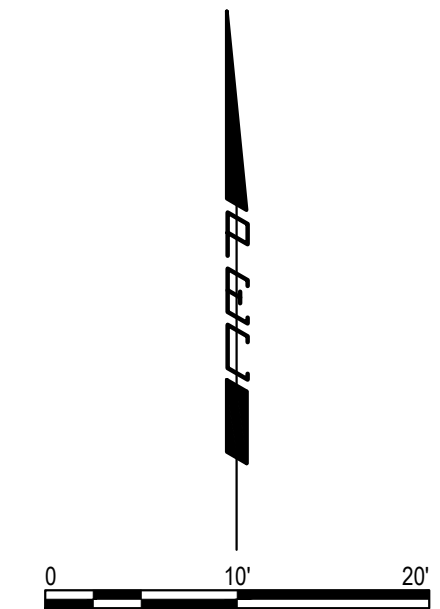
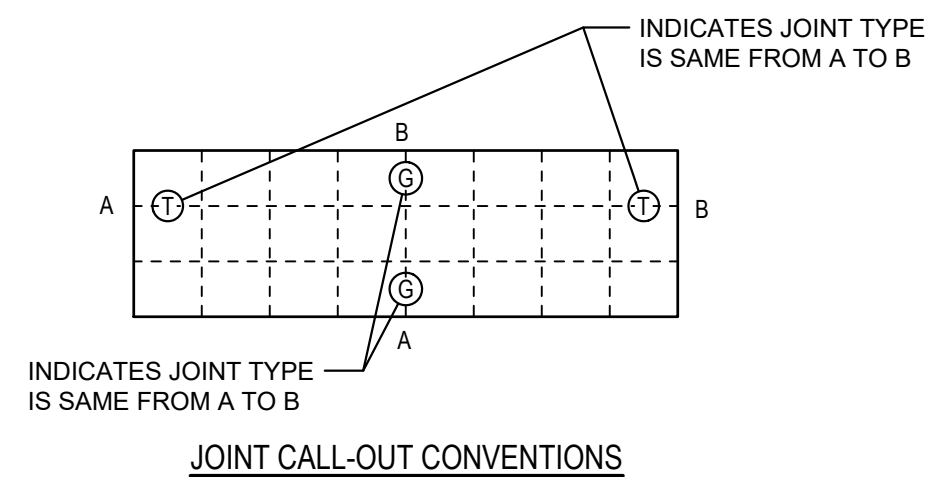
- COORDINATE LABEL
- FENCE COORDINATE LABEL
- RADIUS COORDINATE LABEL

NOTES:

SEE SHEET CU254 FOR COORDINATE TABLES.

PAVEMENT JOINT LEGEND

- THICKENED EDGE JOINT
- BUTT JOINT
- DOWELED CONSTRUCTION JOINT
- SAWED CONTRACTION JOINT (TIED)
- SAWED CONTRACTION JOINT (UNTIED)
- EXPANSION JOINT
- PAVEMENT JOINT
- OMIT DOWEL OR TIE BAR
- PANEL TO BE REINFORCED



EAST PRESSURE ZONE IMPROVEMENTS

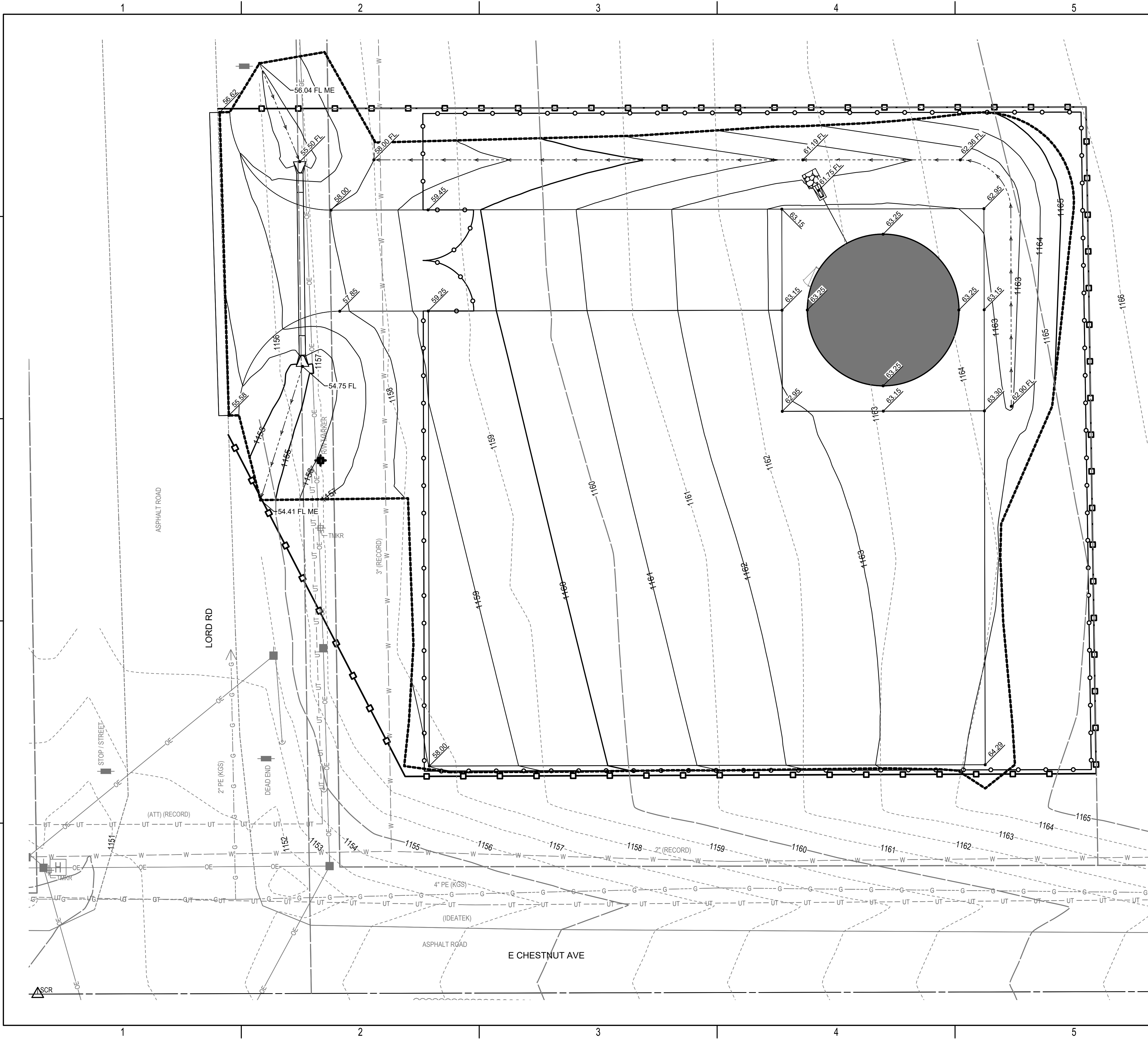
WATERLINE, PUMP STATION AND WATER TOWER

ARKANSAS CITY COWLEY COUNTY, KANSAS

Issue:		
JOB NO.	237346-002	
DATE	SEPTEMBER 2025	
PM	GAS	
DESIGNED BY	JAE	
DRAWN BY	BAB	
CHECKED BY	SMT	
WATER TOWER SITE PAVING PLAN		

CU202

SAVED 9/30/2025 1:16:49 PM BY JAKE EXLEY
PLOTTED 10/14/2025 2:06:26 PM BY KURTIS DEKAT
C:\DC\ACCORDS\PEC HUB\237346-002 ARKANSAS CITY E PRESSURE ZONE\PROJECT
FILES\DESIGN\237346-002 CU203.DWG



GRADING LEGEND

- 1100 EXISTING MAJOR CONTOUR
- 1101 EXISTING MINOR CONTOUR
- 1100 PROPOSED MAJOR CONTOUR
- 1101 PROPOSED MINOR CONTOUR
- PROPOSED GRADING LIMITS
- PROPOSED DITCH CENTER LINE
- PROPOSED SPOT ELEVATION (+ 1100 = NAVD88 ELEVATION)

GRADING ABBREVIATIONS

- FL FLOW LINE
- HP HIGH POINT

EROSION CONTROL LEGEND

- PROPOSED SILT FENCE

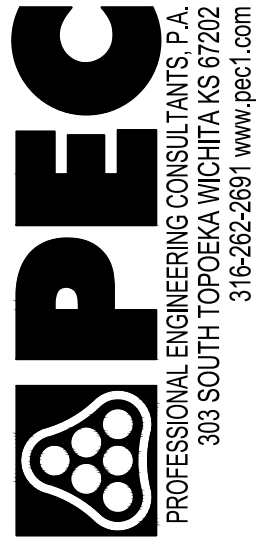
GRADING PLAN NOTES:

- ALL FILL MATERIAL BLADED SMOOTH AND SLOPED TO DRAIN.
- CADD FILES FOR GRADING WILL BE MADE AVAILABLE UPON REQUEST.
- THE CONTRACTOR SHALL SATISFY THEMSELVES WITH THE EARTHWORK QUANTITIES AND NO CHANGE ORDER FOR EARTHWORK WILL BE APPROVED.
- ELEVATIONS NOTED ARE TO FINISHED GRADE. REFERENCE PAVEMENT DETAILS FOR MORE INFORMATION.
- THE TOP 6" OF ALL AREAS TO BE SEEDED SHALL RECEIVED TOPSOIL MATERIAL SUITABLE FOR GROWTH OF VEGETATION. OVEREXCAVATE 6" THRU AREAS OF CUT FOR PLACEMENT OF TOPSOIL. NO ADDITIONAL PAYMENT SHALL BE MADE FOR DOUBLE-HANDLING OF STOCKPILING.

EROSION CONTROL PLAN NOTES:

- CONTRACTOR SHALL INSTALL AND MAINTAIN EROSION PROTECTION THROUGHOUT THE ENTIRE PROJECT. THE FOLLOWING QUANTITIES ARE FOR INFORMATION ONLY, AND SHALL BE INCLUDED IN THE EROSION CONTROL LUMP SUM BID ITEMS. EROSION PROTECTION SHALL BE INCLUDED IN THE BID AS FOLLOWS:
CONSTRUCTION ENTRANCE = 1 EA.
SILT FENCE BARRIER = 516.5 L.F.
- THE EROSION CONTROL DEVICES SHOWN ON THIS SHEET ARE CONSIDERED MINIMUM STANDARDS. WHENEVER SEDIMENT ENTERS THE STREETS, STORM SEWERS, DITCHES, OR PONDS, CONTRACTOR WILL INSTALL ADDITIONAL DEVICES, AS NEEDED, TO CORRECT THE PROBLEM.
- THE EROSION CONTROL DEVICES SHOWN HEREON MUST BE IN PLACE AT ALL TIMES DURING CONSTRUCTION UNTIL SUCH TIME AS THE SITE IS REESTABLISHED WITH PAVING OR GRASS. TEMPORARY OR PERMANENT SEEDING AND MULCH WILL BE INSTALLED WHEN EARTHWORK ACTIVITIES CEASE IN AN AREA FOR 14 DAYS OR MORE.
- ANY MUD INADVERTENTLY TRACKED ONTO ANY STREET SHALL BE CLEANED UP BY THE CONTRACTOR, AT THE END OF EACH DAY'S WORK, OR AS DIRECTED BY THE FIELD ENGINEER.
- CONTRACTOR TO FURNISH A TRUCK WASH-OUT PIT TO BE PLACED AT A CONVENIENT LOCATION THAT DOES NOT CONFLICT WITH CONSTRUCTION. CONTRACTOR SHALL CLEAN OUT AND BACKFILL PIT PRIOR TO FINAL INSPECTION. LOCATION SHALL BE APPROVED BY THE FIELD ENGINEER.

6. SITE INFORMATION:
SITE AREA = 0.51 AC. (22,502.0 S.F.)
DISTURBED AREA = 0.44 AC. (19,339.2 S.F.)



EAST PRESSURE ZONE IMPROVEMENTS
WATERLINE, PUMP STATION AND WATER TOWER
ARKANSAS CITY
COWLEY COUNTY, KANSAS

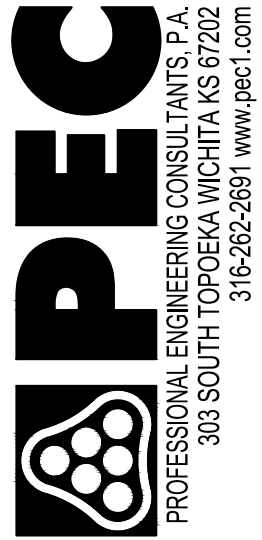
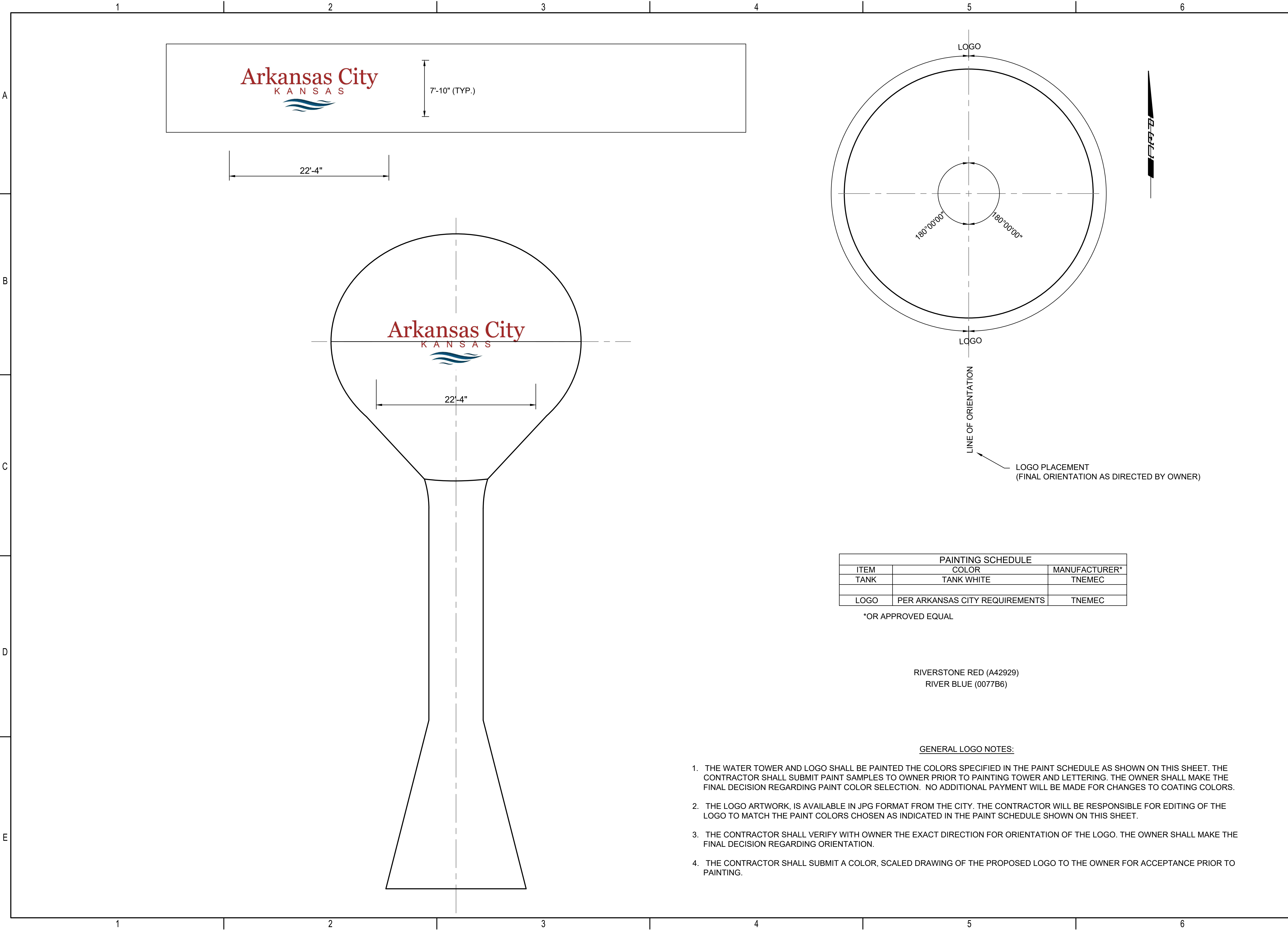
Issue:		

JOB NO.	237346-002
DATE	SEPTEMBER 2025
PM	GAS
DESIGNED BY	JAE
DRAWN BY	BAB
CHECKED BY	SMT

WATER TOWER SITE
GRADING PLAN

CU203

SAVED 9/30/2025 10:55:13 AM BY CATHY.LINK
 PLOTTED 10/14/2025 2:06:33 PM BY KURTIS DEKAT
 C:\DC\ACCD\CS\PEC HUB\237346-002 ARKANSAS CITY E PRESSURE ZONE\PROJECT
 FILES\DESIGN\237346-002-CU252.DWG



EAST PRESSURE ZONE IMPROVEMENTS

WATERLINE, PUMP STATION AND
WATER TOWER
ARKANSAS CITY
COWLEY COUNTY, KANSAS

Issue:		

JOB NO.	237346-002
DATE	SEPTEMBER 2025
PM	GAS
DESIGNED BY	GAS, ARS
DRAWN BY	CSL
CHECKED BY	TBK

WATER TOWER LETTERING

CU252