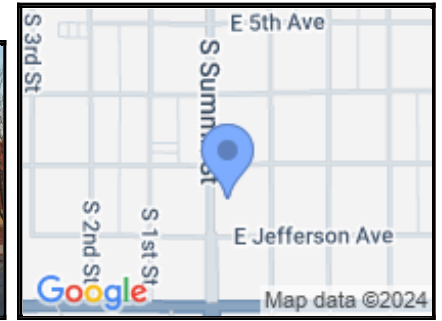


Kansas Historic Resources Inventory

Printed: 10/18/2024



035-0210-00040
R & K Motor Co.
412 S SUMMIT ST
Arkansas City



LOCATION:

County: Cowley

Address: 412 S SUMMIT ST

Address Remarks:

City: Arkansas City

Zip: 67005 - 2851

Parcel ID: 299-30-0-30-27-004.00-0

Legal Description:

Legal Description Remarks: ARKANSAS CITY, BLOCK 71, Lot 7 - 8

Latitude, Longitude 1: 37.058142 -97.038651

Latitude, Longitude 2:

Latitude, Longitude 3:

Latitude, Longitude 4:

Datum: WGS84

DESCRIPTION:

Historic Name: R & K Motor Co.

Alternate Name: Holt Motor Co./Ark City Motor Co.

Historic Function: Commerce/Trade

Subcategory: Business

Historic Function Remarks: Commercial garage.

Present Function: Vacant/Not in Use

Subcategory:

Present Function Remarks: 2011: car shop; 2017: Vacant.

Residential/Commercial/Religious Style: Art Deco

Secondary Style:

Barn Type: Not Applicable

Bridge Type: Not Applicable

Landscape Type: Not Applicable

Physical Description/Remarks: One-story concrete building has tall and wide curved parape to resemble a keystone at the top. There are three "storefront" bays, the center of which was likely garage entry; all three could have been for vehicular access but north bay has concrete base with punched window above that appears integral. Inset bays on facade retain smooth concrete finish. Outer band of curved parape and piers has rough textured spray-on coating. Storefront bays have concrete bay with display windows in outer bays; the south bay having wood siding over transom panels. The center bay

is an overhead garage door (replacement) and a single man door adjacent on the north. Rear facade has original concrete facade visible with concrete block infill at several original openings. There is a garage bay on lower level (sloping site). Building occupies two-thirds of lot with overgrown lot behind. Concrete ramp or remnants thereof is in place at garage bay.

Plan Form: Rectangle

Commercial Building Type: One-Part Commercial Block

Roof Form: Gable with Parapet

Stories: 1

Condition: Fair

Principal Material: Concrete

Condition Remarks: Concrete building has formerly been painted on front facade.

Architect/Designer/Builder: Unknown

Year of Construction: 1911

Certainty: Estimated

Date Notes: 1920 Sanborn indicates a garage at this location. In the 1925 CD R & K Motor Co is listed. By 1938 Holt Motor Co is listed at 412-418. Ark City Motor Co had taken over the space by 1952, but the building was vacant in 1962 (CD).

General Remarks:

Ancillary Structures: None

Ancillary Structure Remarks:

REGISTER STATUS:

Listed in State Register: Contributing

Date of State Listing: 08/27/1983

Listed in National Register: Contributing

Date of National Listing: 10/28/1983

Historic District: Arkansas City Commercial Center Historic District

Demolished:

Date Demolished (if applicable):

Potentially Eligible for National Register:

Register Status Remarks:

Thematic Nomination (MPDF):

National Historic Landmark:

SURVEY INFORMATION:

Survey 1

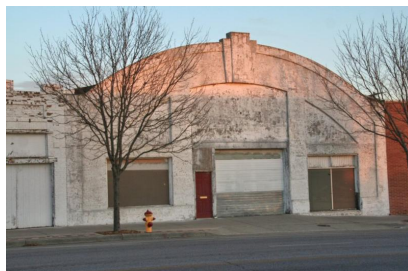
Survey Project Name: Arkansas City - Resurvey of Commercial Center Historic District and Adjacent Area (HPF2018)

Sequence Number: 090

Surveyed By: Spencer Preservation

Survey Date: 12/11/2017

IMAGES & DOCUMENTS



412 S Summit. Principal Elevation.
07/24/2009.



R & K Motor Co. 412 S. Summit.
East side 400 block S. Summit.
12-11-2017. B. Spencer

R & K Motor Co. 412 S. Summit.
West/front facade. 12-11-2017. B.
Spencer



R & K Motor Co. 412 S. Summit.
East/rear facade. 12-11-2017. B.
Spencer

R & K Motor Co. 412 S. Summit.
Storefront, looking N on sidewalk in
front of West facade. 12-11-2017. B.
Spencer



R & K Motor Co. 412 S.
Summit. Siteplan. 2017. City of
Arkansas City.