



# STAFF REPORT

City of Arkansas City Neighborhood Services Division

Josh White, Principal Planner

118 W Central Ave, Arkansas City, KS 67005

Phone: 620-441-4420 Fax: 620-441-4403 Email: [jwhite@arkansascityks.gov](mailto:jwhite@arkansascityks.gov) Website: [www.arkcity.org](http://www.arkcity.org)

CASE NUMBER  
HR-2022-036

APPLICANT/PROPERTY OWNER  
Andrew Iverson

MEETING DATE  
October 17, 2022

PROPERTY ADDRESS/LOCATION  
208 S Summit St

### PROJECT DESCRIPTION

The subject property is located at 208 S Summit Street. The proposed project is an unlit polymetal sign mounted above the storefront on the sign board. A portion of the sign will be backlit channel letters. Staff recommends approval of the sign per the Guidelines for Signs in Historic Districts and Individually Listed properties in accordance with KSA 75-2724, Kansas State Historic Preservation Law.



Map data ©2022 Esri World Topographic map

CONSTRUCTION DATE 1920	CONSTRUCTION TYPE Two Part Commercial Block	STATE/NATIONAL REGISTER STATUS Listed on the State and National Registers as a Contributing Building	BUILDING SIZE 6,300 sq feet	SIZE OF PROPERTY 48.5' X 132' 0.15 acres
---------------------------	--	---	--------------------------------	--

### STAFF RECOMMENDATION

APPROVE

APPROVE WITH CONDITIONS

DENY

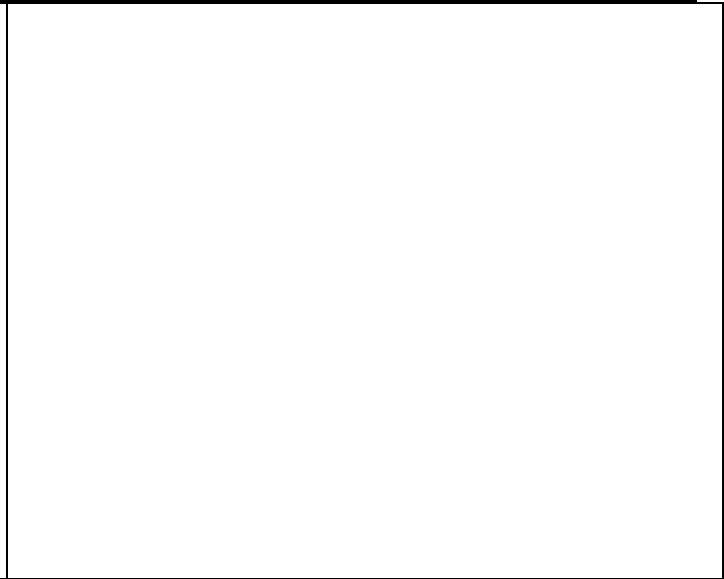
According to the Standards and Guidelines, "Using new illuminated signs; inappropriately scaled signs and logos; signs that project over the sidewalk unless they were a characteristic feature of the historic building; or other types of signs that obscure, damage, or destroy remaining character-defining features of the historic building" is not recommended. The sign appears appropriately scaled and is placed on the sign board which appears to be the appropriate placement. The sign would meet the Standards and could be approved per KSA 75-2724.

### Project Type & Review Standards

	YES	NO	N/A
Historic use/reuse and minimal change to distinctive materials, features, etc.			X
Historic character retained; removal or alteration distinctive materials avoided	X		
No changes that create a false sense of historical development	X		
Changes that have acquired historical significance in their own right will be retained	X		
Distinctive materials, features, examples of craftsmanship, etc. will be preserved	X		
Repair deteriorated historic features; new features will match old in design			X
Chemical and physical treatments will be as gentle as possible			X
Protect and preserve archeological resources in place			X
New construction will not destroy historic features that characterize property and will be differentiated from the old; new work is compatible with size, scale, massing, etc			X
New construction can be removed without destroying essential form & integrity	X		



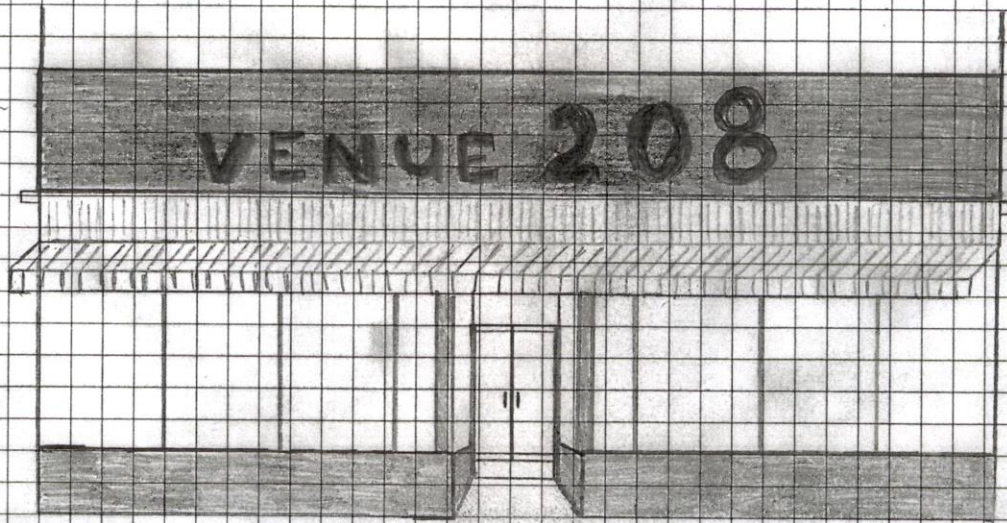
Photo with added graphics courtesy of Cardinal Sign  
8/18/18



Venue 208

A. Iverson '22

Option 1



- Reuse "VENUE" from old sign.
- Order 208, which will be backlit.
- 208 in RAILWAY MEDIUM 500.  
in LED lighting.

Andrew Iverson  
(620) 660-2520

Legend  
1" = 100'