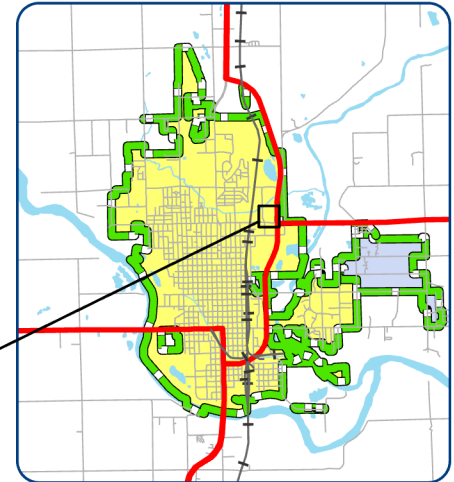
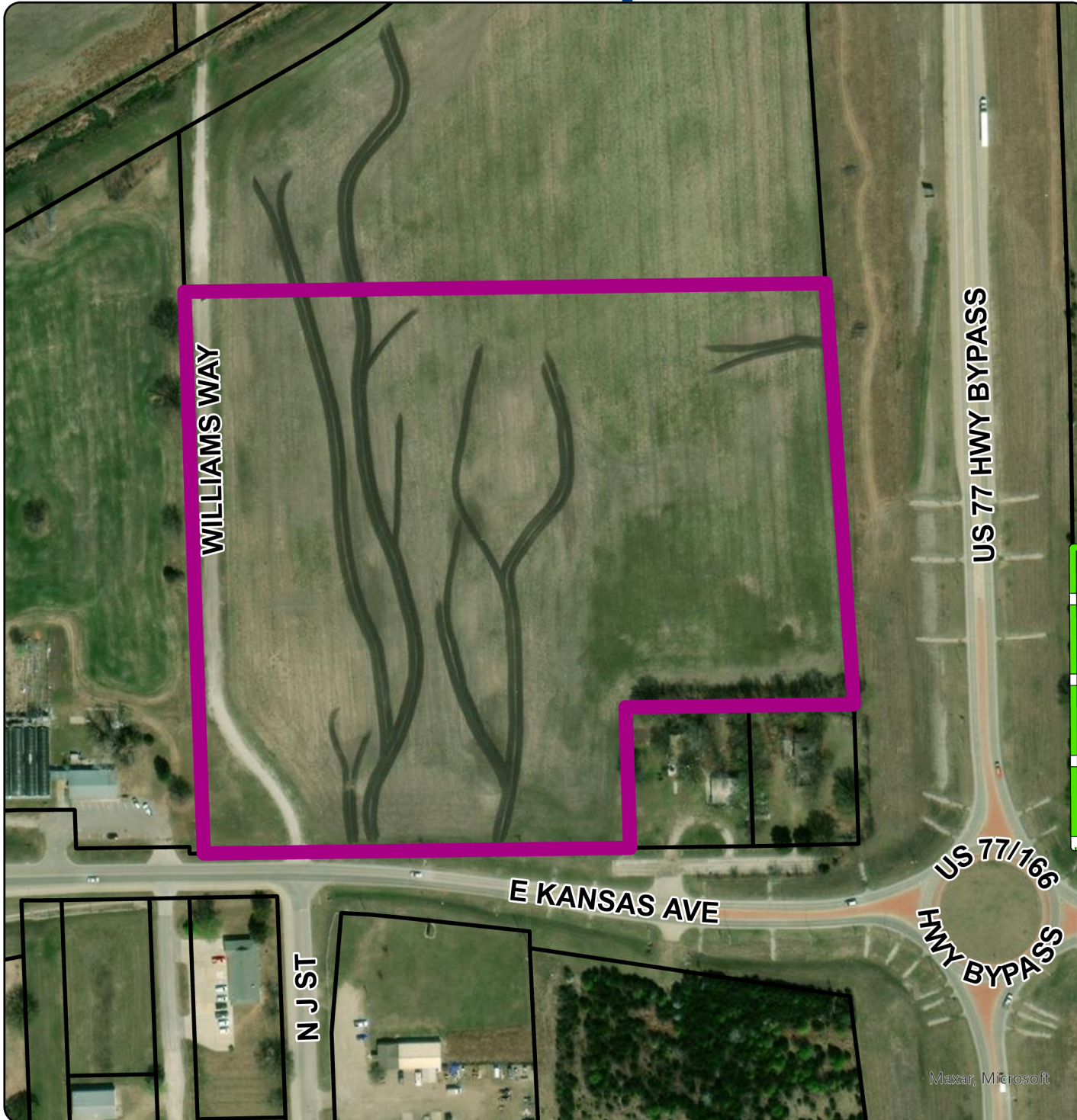


Rezone Request



**Request to Rezone
1110 E Kansas Ave
from
MU-Mixed Use District
to
C-3 General Commercial District**

-  City Limits
-  Rezone
-  Property Lines

Maxar, Microsoft

Produced by the
City of Arkansas City GIS
using the best available
data to date.
Created: June 03, 2021

