



# STAFF REPORT

City of Arkansas City Neighborhood Services Division  
Josh White, Principal Planner  
118 W Central Ave, Arkansas City, KS 67005

Phone: 620-441-4420 Fax: 620-441-4403 Email: [jwhite@arkansascityks.gov](mailto:jwhite@arkansascityks.gov) Website: [www.arkcity.org](http://www.arkcity.org)

CASE NUMBER  
HR-2024-041

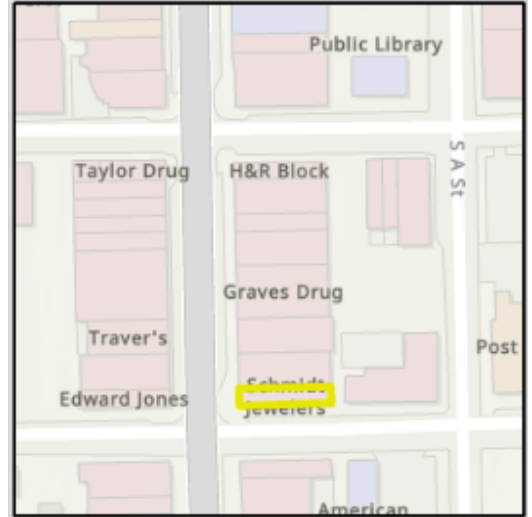
APPLICANT/PROPERTY OWNER  
Cardinal Sign/Kody Beltz

MEETING DATE  
May 20, 2024

PROPERTY ADDRESS/LOCATION  
226 S Summit St

### PROJECT DESCRIPTION

The subject property is located at 226 S Summit Street. The proposed project is a sign that is mounted on the existing awning and unlit. Previously there was a canvas awning over the top of the current metal awning but was damaged after lightning damaged the building and a piece fell on the awning. The previous owner had the stone properly repaired. Cardinal Sign notes that this would have a similar look to Traver's across the street. Staff recommend approval of the sign per the Guidelines for Signs in Historic Districts and Individually Listed properties in accordance with KSA 75-2724, Kansas State Historic Preservation Law.



Map data ©2024 Esri World Topographic map

CONSTRUCTION DATE  
1890

CONSTRUCTION TYPE  
Two-Part Commercial Block

STATE/NATIONAL REGISTER STATUS  
Listed on the State and National Registers as a Contributing Building

BUILDING SIZE  
3300 sq feet

SIZE OF PROPERTY  
25' X 132'  
0.08 acres

### STAFF RECOMMENDATION

APPROVE

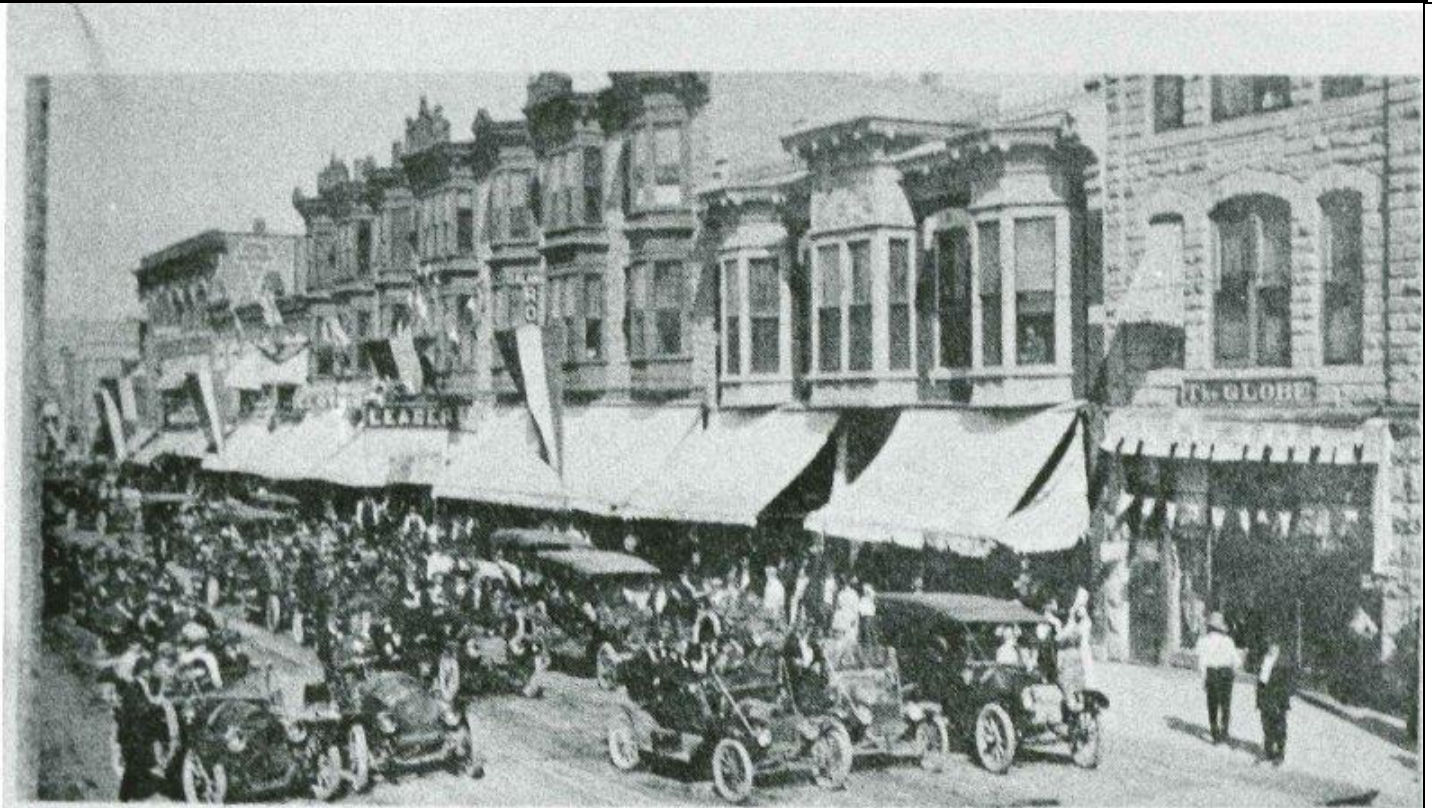
APPROVE WITH CONDITIONS

DENY

According to the Standards and Guidelines, "Using new illuminated signs; inappropriately scaled signs and logos; signs that project over the sidewalk unless they were a characteristic feature of the historic building; or other types of signs that obscure, damage, or destroy remaining character-defining features of the historic building" is not recommended. The sign appears appropriately scaled and is placed on the existing awning. The sign appears to meet the Standards and could be approved per KSA 75-2724.

**Project Type & Review Standards**

	YES	NO	N/A
Historic use/reuse and minimal change to distinctive materials, features, etc.			X
Historic character retained; removal or alteration distinctive materials avoided	X		
No changes that create a false sense of historical development	X		
Changes that have acquired historical significance in their own right will be retained	X		
Distinctive materials, features, examples of craftsmanship, etc. will be preserved	X		
Repair deteriorated historic features; new features will match old in design			X
Chemical and physical treatments will be as gentle as possible			X
Protect and preserve archeological resources in place			X
New construction will not destroy historic features that characterize property and will be differentiated from the old; new work is compatible with size, scale, massing, etc			X
New construction can be removed without destroying essential form & integrity	X		



**ANTI HORSE THIEF ASSOCIATION PARADE**

ca. 1912 view of S Summit St. Cornish Studio. The building is on the far right with "The GLOBE" sign. Downloaded from KHRI on 05/07/2024.





*The Good Finch Company*  
*Art & Antiques*

SW6690 Gambol Gold  
Printed Colors TBD

Photos courtesy of Cardinal Sign 05/07/2024 with added graphics.

