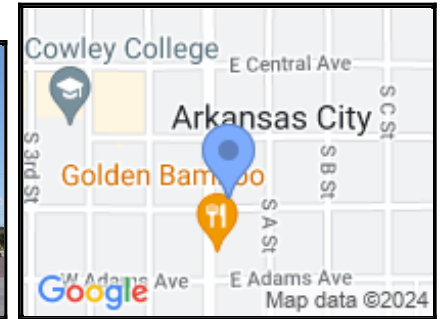


Kansas Historic Resources Inventory

Printed: 05/07/2024



035-0210-00034
K.P. Castle Block
226 S SUMMIT ST
Arkansas City



LOCATION:

County: Cowley

Address: 226 S SUMMIT ST

Address Remarks:

City: Arkansas City

Zip: 67005 - 2847

Parcel ID: 299-30-0-30-15-012.00-0

Legal Description:

Legal Description Remarks: ARKANSAS CITY, BLOCK 69, Lot 14

Latitude, Longitude 1: 37.06006 -97.038596

Latitude, Longitude 2:

Latitude, Longitude 3:

Latitude, Longitude 4:

Datum: WGS84

DESCRIPTION:

Historic Name: K.P. Castle Block

Alternate Name: Whittle Building

Historic Function: Social

Subcategory: Meeting Hall

Historic Function Remarks: The Knights of Pythias met on the third level of this building from ca. 1890-1905. The building was known as the KP Block, the KP Castle, the Whittle Building and The Globe or Lesem Mercantile Company. The building first appears on the 1890 Sanborn, which also notes a bowling alley was in the basement, a clothing store on the main level, and offices on the second. The only changes in 1899 were that the store was vacant and billiards replaced bowling. In 1902, the Lesem Sisters leased the first floor and basement for their Mercantile, the second floor was being used by Dr. L.D. Mitchell for his dental practice. The Whittle family and Mrs. Whittle's mother, Mrs. Hillier, occupied the third floor. According to local history the Lesem sisters store was the first Ladies' Ready-to-Wear store in town. It carried everything but shoes, and specialized in bridal apparel. Hats were made to order in the store. Chief Washunga, Chief of the Kaw Nation, was a customer. Sanborns show the millinery in 1905, that was expanded to include clothing and occupied the basement and first level in 1912 (a photo from ca. 1912 has the name The Globe on the facade). The KoP on the third level were replaced by furnished rooms, and a dentist was on the second level. The same functions (minus the dentist) were noted on the 1920 Sanborn. The 1925 CD lists Midwest Coffee Co. with Globe Apts upstairs. Brown & Miller Furniture is listed in 1930 & 1938, replaced by Whiting Furniture by 1952. Whiting remains at this location through at least 1962 (CD).

Present Function: Commerce/Trade

Subcategory: Specialty Store

Present Function Remarks: 2011 and 2017: Schmidt Jewelry store on the main level with apartments above.

Residential/Commercial/Religious Style: Vernacular

Secondary Style:

Barn Type: Not Applicable

Bridge Type: Not Applicable

Landscape Type: Not Applicable

Physical Description/Remarks: Narrow three-story limestone building appears to have had cornice previously removed. Facade features corner pilasters and arched window surrounds on west and south street facade. Windows visible are 1/1 double-hung wood units in single and pair configurations that appear to be original. Windows are exposed at second-floor openings on front and one bay of south facade only, all other upper windows are covered. Storefront is mid-century replacement.

Stone building has cementitious parging over arched window hoods, keystones and integral beltcourse across south and east/rear facade. Windows are boarded, exposed in select locations on front facade. Historic view shows arched stone openings on street level. Existing storefront is major design change with blond brick corner pier and tall bulkhead (typical of jewelry stores). Entry is recessed at north end of west facade. Transom area is covered with metal siding. Large fixed canvas awning has been installed over flat metal canopy and extends around corner to south storefront bay.

Plan Form: Rectangle

Commercial Building Type: Two-Part Commercial Block

Roof Form: Flat with Parapet

Stories: 3

Condition: Fair

Principal Material: Stone

Condition Remarks:

Architect/Designer/Builder: Unknown

Year of Construction: 1890

Certainty: Estimated

Date Notes: The building first appears on the 1890 Sanborn

General Remarks:

Ancillary Structures: None

Ancillary Structure Remarks:

REGISTER STATUS:

Listed in State Register: Contributing

Date of State Listing: 08/27/1983

Listed in National Register: Contributing

Date of National Listing: 10/28/1983

Historic District: Arkansas City Commercial Center Historic District

Demolished:

Date Demolished (if applicable):

Potentially Eligible for National Register:

Register Status Remarks: Cementitious coating on stone lintels and stone detailing negatively affects historic integrity as does infill of upper windows.

Thematic Nomination (MPDF):

National Historic Landmark:

SURVEY INFORMATION:

Survey 1

Survey Project Name: Arkansas City - Resurvey of Commercial Center Historic District and Adjacent Area (HPF2018)

Sequence Number: 078

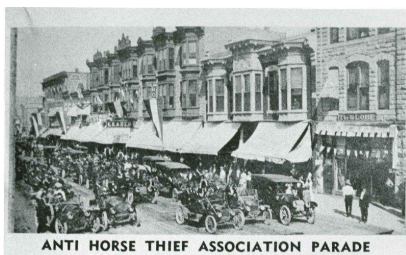
Surveyed By: Spencer Preservation

Survey Date: 12/11/2017

IMAGES & DOCUMENTS



226 S Summit St. Looking NE and the west and south elevations. 07/24/2009.



ca. 1912 view of S Summit St. Cornish Studio.



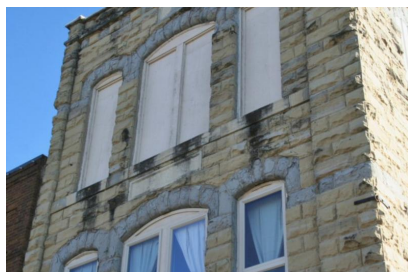
226 S. Summit. 12-11-2017. Front/west facade. B. Spencer



226 S. Summit. 12-12-2017. South facade. B. Spencer



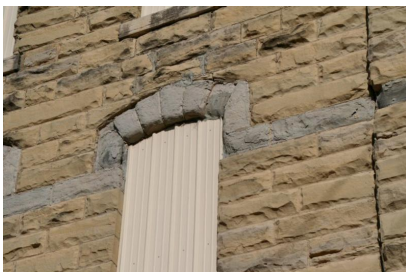
226 S. Summit. 12-12-2017. Storefront at SW corner. B. Spencer



226 S. Summit. 12-12-2017. Upper floors on front/west facade. B. Spencer



226 S. Summit. 12-12-2017. South



226 S. Summit. 12-12-2017. Detail of cement parging on lintels and beltcourse (typical). B. Spencer



226 S. Summit. Siteplan. 2017. City of Arkansas City.

and east/rear facades. B. Spencer