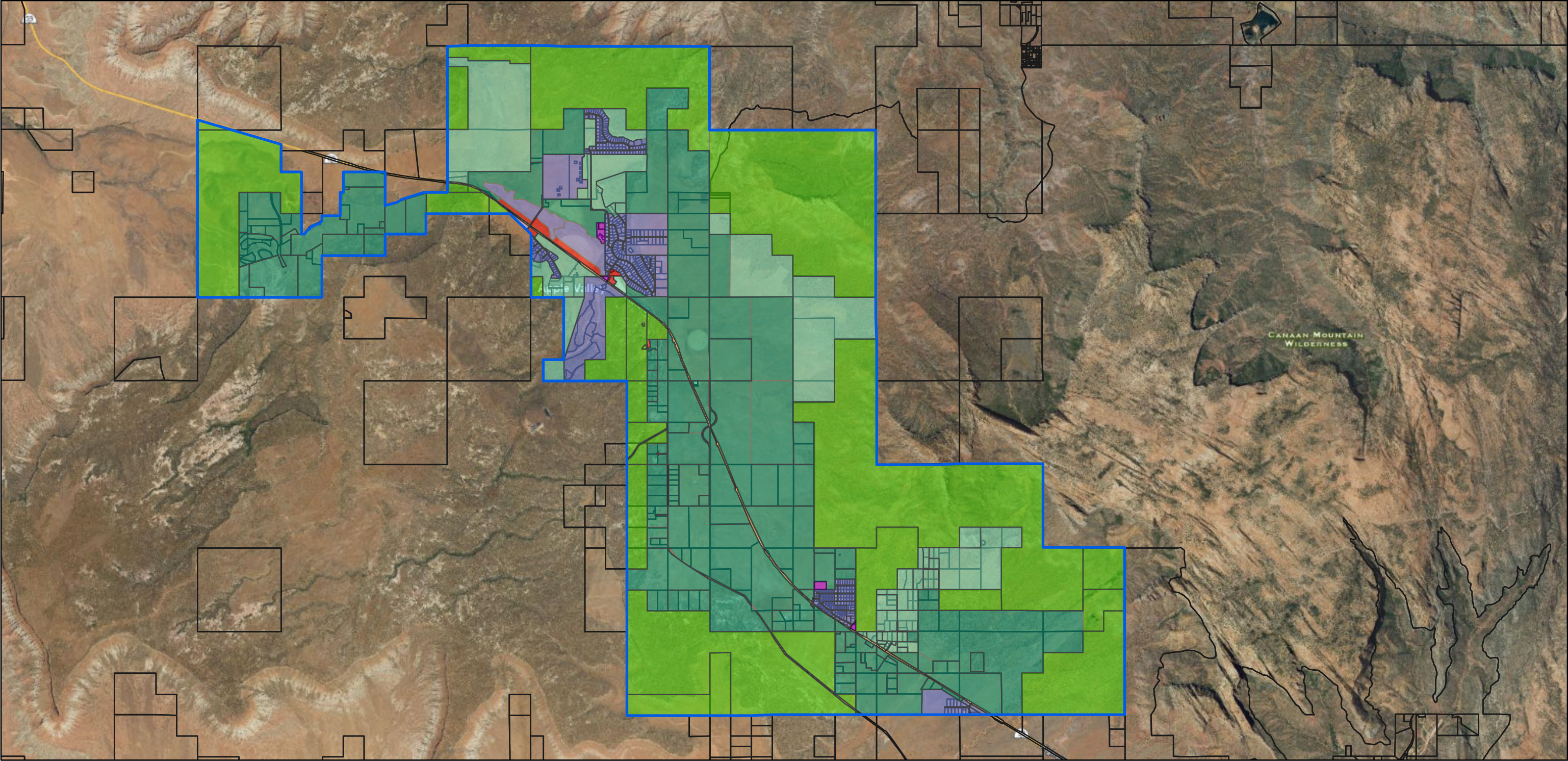


Apple Valley Proposed General Plan 4/28/25



4/28/2025, 1:59:42 PM

- Town Boundary

General Plan

A - Agricultural

C - Commercial
- CTP - Cabin/Tiny Home

INST - Institutional

OS - Open Space
- R2 - Residential Medium: 1 - 5 Acres

R3 - Residential Low: 5 + Acres

Washington County Parcels

