

Pinnacle Park Owners Association
(NOTE NEW ADDRESS)

101 Fern Bluff Way

Cary, NC 27518

(919) 924-6025 (Erv)

(919) 924-6100 (Sue)

eportman@weststarprecision.com Erv Portman President

sportman@weststarprecision.com Sue Portman, Secretary Treasurer

July 3, 2025

To: Apex Town council and

Town Manager Mr. Shawn Purvis;

Re: Request for a no overnight parking ordinance in Pinnacle Park business park

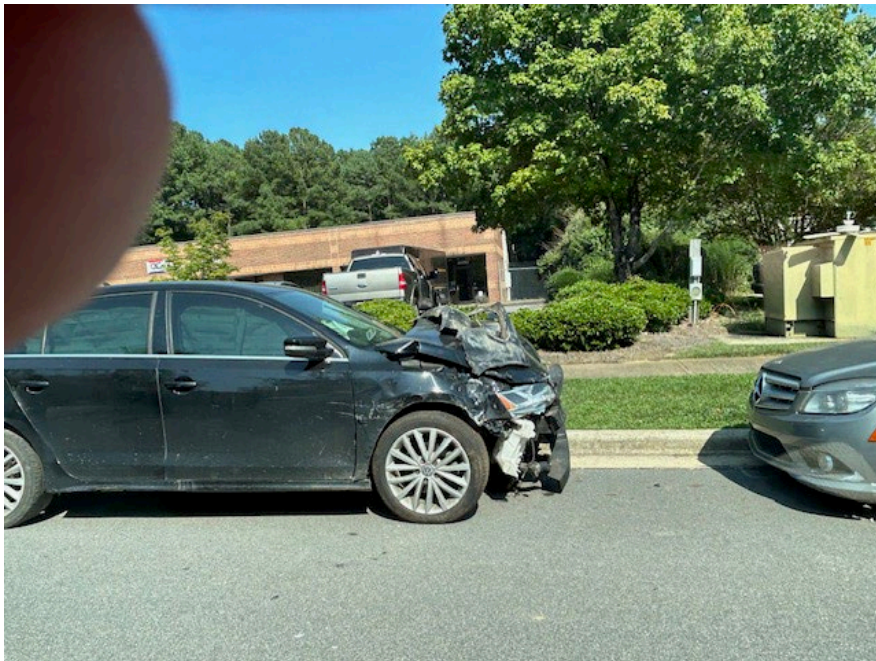
Pinnacle Park is one of the Town's largest employment centers, and we as owners of business in it, have worked hard to keep high standards in the park. We know how important it is to the Town that we have attractive business locations to attract and retain business.

The recent expansion of business in the Cash property are also major new employers who access this new site from our streets. Apex has a lot at stake, and we know it is easy to lose a new employer if they don't like what they see on a site visit.

Over the last several years we have been working with the town to address two issues that detract from our shared goals.

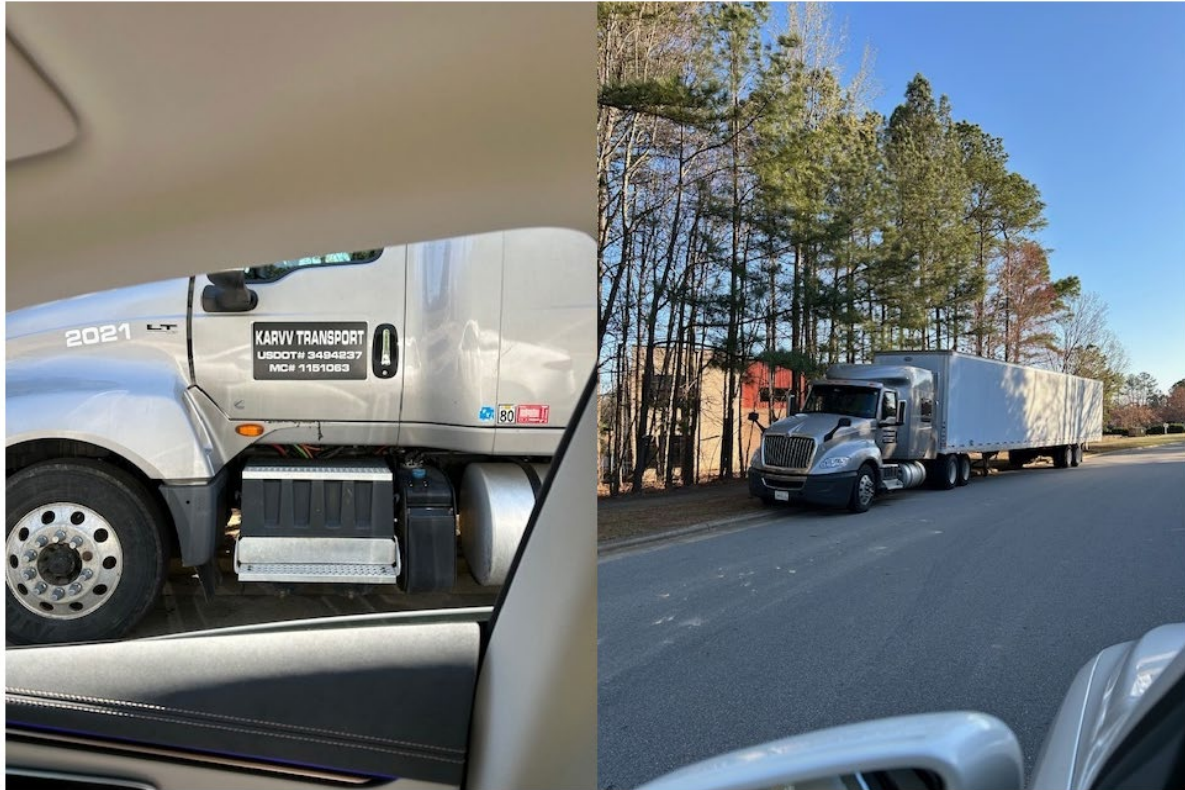
1. One auto repair company on Reliance Drive storing damaged vehicles on the road or lawn or sidewalks for extended storage. The on grass and side walk is unsightly and violates the approved site plan for that location.

Here are some photos of the issue;





2. Semi-trucks multiday storage on our streets to store their trucks on weekends and on weeks they are not being used.



This is on reliance ave near the corner of Production. It's been here every weekend for weeks, I don't know if it moves during the week or not.

Both are examples of commercial businesses using town streets to store commercial property, both have options to pay to store the vehicles but choose to use our streets to save money.

We are not opposed to street parking in Pinnacle Park, we are opposed to any business storing inventory equipment wreck cars, idle trucks, and trailers on our streets for overnight storage and storage for days, weeks and months.

Recently the town has had better results with the Auto Body shop, but over time the issue usually reappears. The overnight storage of semitrucks is an ongoing issue. Just the week the orange truck has reappeared parking on Classic Road for multi day storage.



As an owner's association we have reached out to the business to ask for cooperation. It works for a while then the problem always recurs.

The trucks are not from our business; they just use our streets to avoid paying storage fees when the trucks are idle.

Not only is this unsightly but also a safety issue, as our streets are not wide enough for parking on both sides and still having two-way traffic flow.



To resolve this unsightly recurring issue, We ask the town to adopt a “no overnight parking” ordinance to prevent this issue in the future. This solution would still allow local businesses

to have overflow parking during the day but would prevent the overnight storage of vehicles on our roads for extended periods of time.

This would eliminate the unsightly issue and minimize times when two way flow of traffic is restricted to one lane due to parking on both sides of the street.

Our objective is the same as yours, we want Apex to be successful in recruiting and retaining great business to our area. Keeping the park attractive is key to that goal.

I appreciate your effort over the years to reduce this problem but as we both have observed, despite your best efforts the problem returns over time. The “no overnight parking” ordinance would give the town the enforcement needed to resolve the issue.

I hope the council will support the “no overnight parking” we are seeking for Pinnacle Park. I would be happy to appear before the council to discuss it if that would be helpful.

Erv Portman

President

Pinnacle Park Owners Association

919 924 6025

P.S. Here is the first letter I can find dating back a few years.

From: Ervin Portman <eportman@weststarprecision.com>
Sent: Monday, August 14, 2023 10:42 AM
To: All Council <AllCouncil@apexnc.org>
Subject: Overnight parking restrictions in Pinnacle Park

Notice: This message is from an external sender.
Do not click links or open attachments unless you trust the sender, and can verify the content is safe.

Mayor and members of the Council.

I am reaching out to seek your assistance with an issue we have had here in Pinnacle Park. Recently we have had an accumulation of tractor trailers using our streets to park and or store idle trucks for an extended period.

As I hope you know Pinnacle Park is a major employment center to Apex and it also serves as the entry to the new employment which will be offered in the Cash property.

Could we solicit your support to restrict parking to prohibit overnight parking? This would resolve two problems, the tractor trailers and auto collision cars sometimes left parked on the town streets.

Perhaps this would require an ordinance change?

See photos of some of the truck storage and residual trash and litter to get a feel for the issue we are trying to resolve.

Thanks for all you do for our town, I hope you can help us resolve this growing issue.

Ervin Portman
919-924-6025
<image013.jpg>

<image014.jpg>