



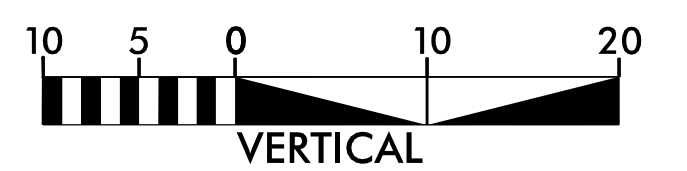
DOCUMENT NOT CONSIDERED FINAL
UNLESS ALL SIGNATURES COMPLETED



Would like to install
18" RCP approx 35
LF approx station #
19+40 to 19+50.

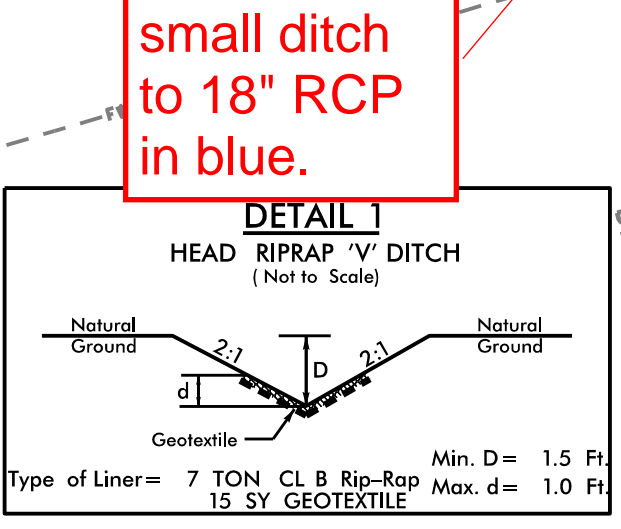
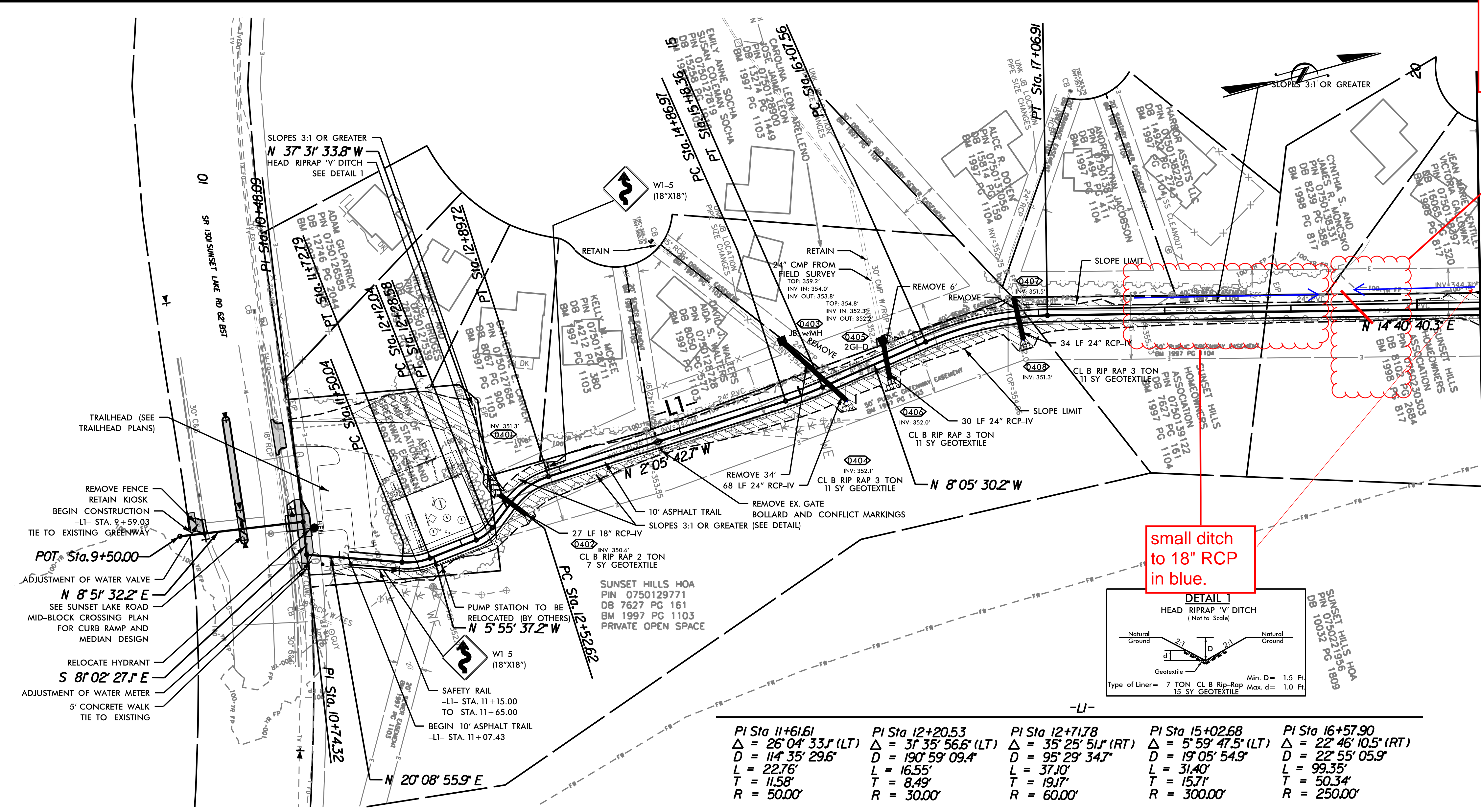
NOTES:

1) SEE SHEET C-1 FOR GENERAL NOTES.

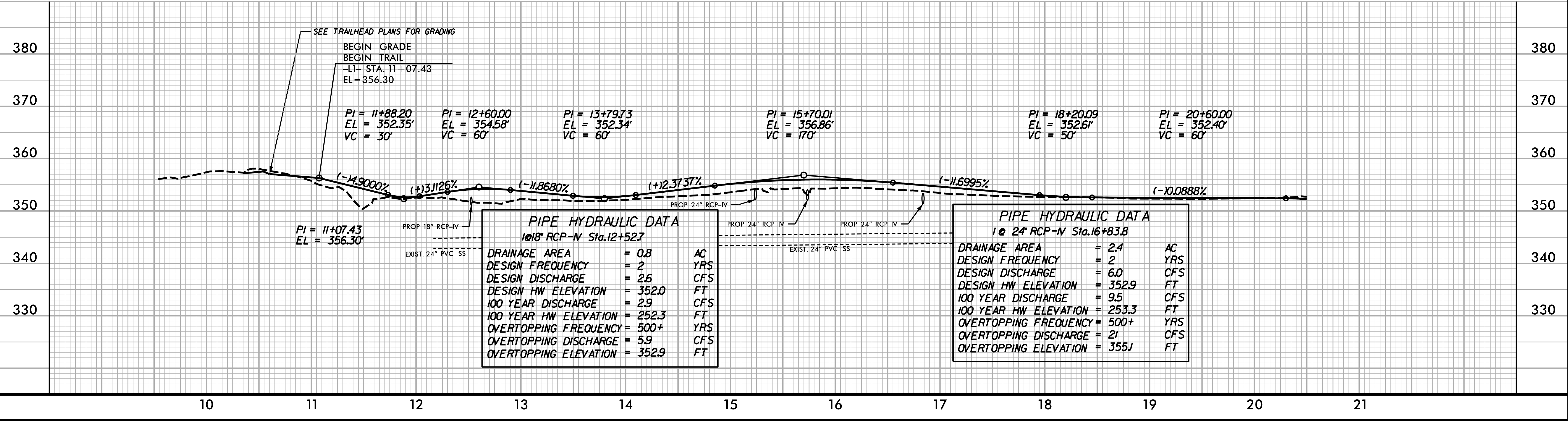


The signatures affixed below certify that this sheet has been reviewed and approved solely per the certifications signed on the cover sheet of these construction plans.

Approved rdillon 03/09/2021 1:27:09 PM Public Works - Transportation	N/A stforier 03/11/2021 4:13:11 PM Water Resources - Stormwater
N/A sewens 03/12/2021 9:07:15 AM Building Inspections	Approved stforier 03/09/2021 8:24:14 AM Planning
Approved stforier 03/09/2021 12:43:11 PM Water Resources - Utility Engineering	Approved stforier 03/09/2021 11:10:57 AM Planning - Transportation
N/A rsmith 03/09/2021 1:59:26 PM Electric	N/A khuegerich 03/09/2021 11:05:17 AM Fire
N/A stforier 03/11/2021 4:13:16 PM Water Resources - Soil & Erosion Control	Approved areincka 03/09/2021 11:05:17 AM Parks, Recreation & Cultural Resources



PI Sta 11+61.61 Δ = 26° 04' 33" (LT) D = 114' 35" 29.6' L = 22.76' T = 11.58' R = 50.00'	PI Sta 12+20.53 Δ = 31° 35' 56.6" (LT) D = 190' 59" 09.4' L = 16.55' T = 8.49' R = 30.00'	PI Sta 12+71.78 Δ = 35° 25' 51" (RT) D = 95' 29" 34.7' L = 37.10' T = 19.17' R = 60.00'	PI Sta 15+02.68 Δ = 5° 59' 47.5" (LT) D = 19' 05" 54.9' L = 31.40' T = 15.71' R = 300.00'	PI Sta 16+57.90 Δ = 22° 46' 10.5" (RT) D = 22' 55" 05.9' L = 99.35' T = 50.34' R = 250.00'
---	--	--	--	---



REVISIONS

8/17/99

8/17/99