

REVISIONS	MASTER SUBDIVISION PLAT FOR <b>THE PARK AT WIMBERLY</b> PHASES 1 AND 2 RCA AREAS 6, 7, 8, 9 AND 10	<b>ROBINSON &amp; PLANTE, P.C.</b> LAND SURVEYING C-2687 970 TRINITY ROAD RALEIGH, NC 27607 PHONE: (919)859-6030
TOWNSHIP: WHITE OAK	COUNTY: WAKE	SURVEY DATE: 7-25-2023
STATE: NORTH CAROLINA	PIN: 0723.04-50-6472	SURVEYED BY: KS
ZONING: PUD-CZ		SCALE: 1"=60'
		CHECKED & CLOSURE BY: SEP
		DRAWN BY: KW
		FILE: PAWPH1S10
		SHEET: 10 OF 11

OWNER: WELLFIELD DEVELOPMENT, LLC,  
4441 SIX FORKS RD, SUITE 106-117  
APEX, N.C. 27523

TOWN OF APEX  
73 HUNTER ST., PO BOX 250  
APEX, N.C. 27502

RCA NOTE: THE RESOURCE CONSERVATION AREA (RCA) SHOWN HEREON IS THE RESULT OF THE TOWN OF APEX'S FINISHED DEVELOPMENT ORDINANCE (100). THIS RCA MUST BE PRESERVED IN PERPETUITY AND SHALL NOT BE DISTURBED IN ANY MANNER.

AGREEMENTS:  
SEE SHEET 1 FOR CERTIFICATES, ADDITIONAL NOTES AND  
SEE SHEET 7 FOR NOTES AND LEGEND,  
SEE SHEET 11 FOR LINE AND CURVE TABLES.

NOTE: ENCLOSURE WAS DISTRIBUTED BY THE COMPASS METHOD. THE DISTANCES ON THIS MAP ARE ADJUSTED HORIZONTAL GROUND DISTANCES UNLESS OTHERWISE NOTED. ALL AREA CALCULATED BY COORDINATE COMPUTATION.

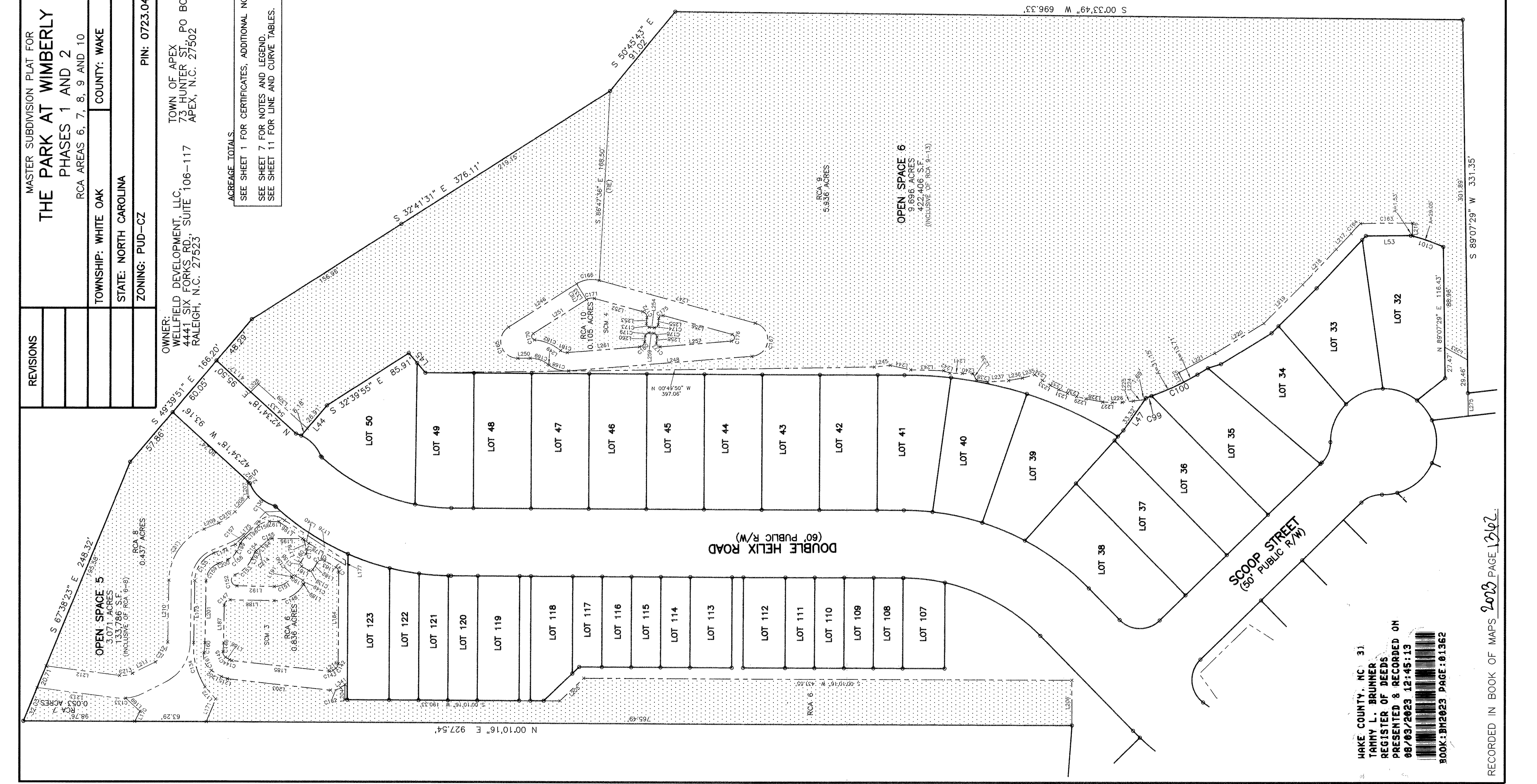
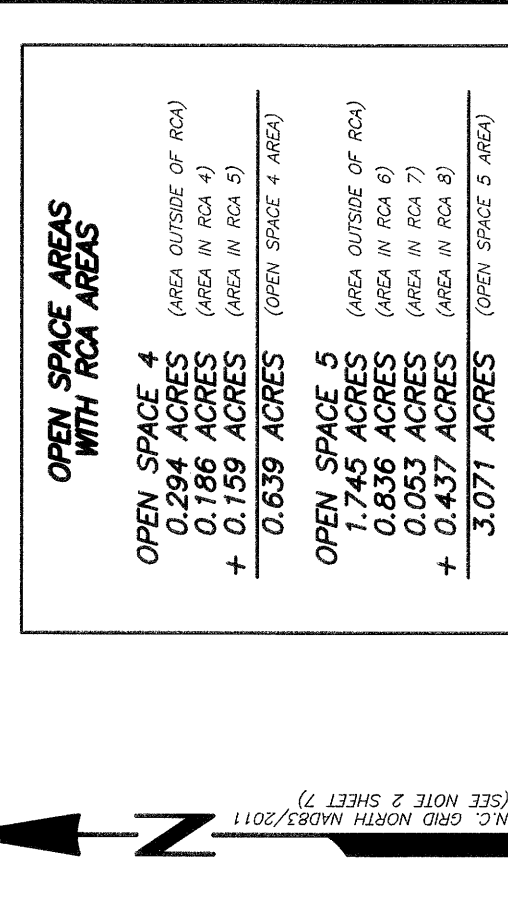


**PARK AT WIMBERLY PHASE 1 AND 2 RCA AREA TABLE**

(RCA AREA)	(ACRES)	(S.F.)	(% OF SUBDIVISION)
RCA 4	0.186	8,107	0.46%
RCA 5	0.159	6,929	0.40%
RCA 6	0.836	36,430	2.08%
RCA 7	0.053	2,289	0.13%
RCA 8	0.437	19,046	1.09%
RCA 9	5.936	256,565	14.83%
RCA 10	1.094	4,561	0.26%
RCA 11	1.094	47,656	2.73%
RCA 12	0.304	13,228	0.76%
RCA 13	0.119	5,194	0.30%
RCA 14	0.346	15,074	0.86%
RCA 15	0.283	12,320	0.71%
RCA 16	0.597	26,986	1.49%
RCA 17	0.403	17,564	1.01%
TOTAL	10.856	472,969	27.11%

**OPEN SPACE AREAS WITH RCA AREAS**

<b>OPEN SPACE 4</b>	(AREA OUTSIDE OF RCA)
0.294 ACRES	(AREA IN RCA 4)
+ 0.186 ACRES	(AREA IN RCA 5)
<b>0.639 ACRES</b>	(OPEN SPACE 4 AREA)
<b>OPEN SPACE 5</b>	(AREA OUTSIDE OF RCA)
1.745 ACRES	(AREA IN RCA 6)
0.836 ACRES	(AREA IN RCA 7)
+ 0.437 ACRES	(AREA IN RCA 8)
<b>3.071 ACRES</b>	(OPEN SPACE 5 AREA)
<b>OPEN SPACE 6</b>	(AREA OUTSIDE OF RCA)
2.139 ACRES	(AREA IN RCA 9)
5.936 ACRES	(AREA IN RCA 10)
0.105 ACRES	(AREA IN RCA 11)
1.094 ACRES	(AREA IN RCA 12)
0.304 ACRES	(AREA IN RCA 13)
+ 0.119 ACRES	(AREA IN RCA 13)
<b>9.697 ACRES</b>	(OPEN SPACE 6 AREA)
<b>OPEN SPACE 7</b>	(OPEN SPACE 7 AREA)
0.043 ACRES	
<b>OPEN SPACE 8</b>	(AREA OUTSIDE OF RCA)
0.805 ACRES	(AREA IN RCA 14)
0.346 ACRES	(AREA IN RCA 15)
+ 0.283 ACRES	(AREA IN RCA 16)
<b>2.031 ACRES</b>	(OPEN SPACE 8 AREA)
<b>OPEN SPACE 9</b>	(AREA OUTSIDE OF RCA)
0.123 ACRES	(AREA IN RCA 17)
+ 0.403 ACRES	(OPEN SPACE 9 AREA)
<b>0.526 ACRES</b>	



WAKE COUNTY, NC 31  
TAMMY L. BRUNNER  
REGISTER OF DEEDS  
PRESENTED & RECORDED ON  
08/03/2023 12:45:13  
BOOK: BM2023 PAGE: 01362

THIS SURVEY CREATES A SUBDIVISION OF LAND WITHIN THE AREA OF COUNTY OR MUNICIPALITY THAT HAS AN ORDINANCE THAT REGULATES PARCELS OF LAND.

*Stuart E. Plante*  
PROFESSIONAL LAND SURVEYOR

DATE: 7/25/23

NORTH CAROLINA  
WAKE COUNTY  
STUART E. PLANTE III  
PROFESSIONAL LAND SURVEYOR  
L-4432

I, STUART E. PLANTE III, CERTIFY THAT THIS PLAT WAS DRAWN UNDER MY SUPERVISION FROM AN ACTUAL SURVEY MADE UNDER MY SUPERVISION. THE DESCRIPTION RECORDED IN REFERENCES AS SHOWN, THAT THE BOUNDARIES NOT SURVEYED ARE DASHED AND DRAWN FROM REFERENCES AS SHOWN; THAT THE RATIO OF PRECISION OR POSITIONAL ACCURACY AS CALCULATED IS 1:33,896. I, STUART E. PLANTE III, HEREBY CERTIFY THAT THIS PLAT WAS PREPARED AS CALICULATED BY COORDINATE COMPUTATION. MY ORIGINAL SIGNATURE, LICENSE NUMBER AND SEAL THIS 25th DAY OF JULY, 2023 A.D.,

*Stuart E. Plante*  
PROFESSIONAL LAND SURVEYOR  
LICENSE NO. L-4432