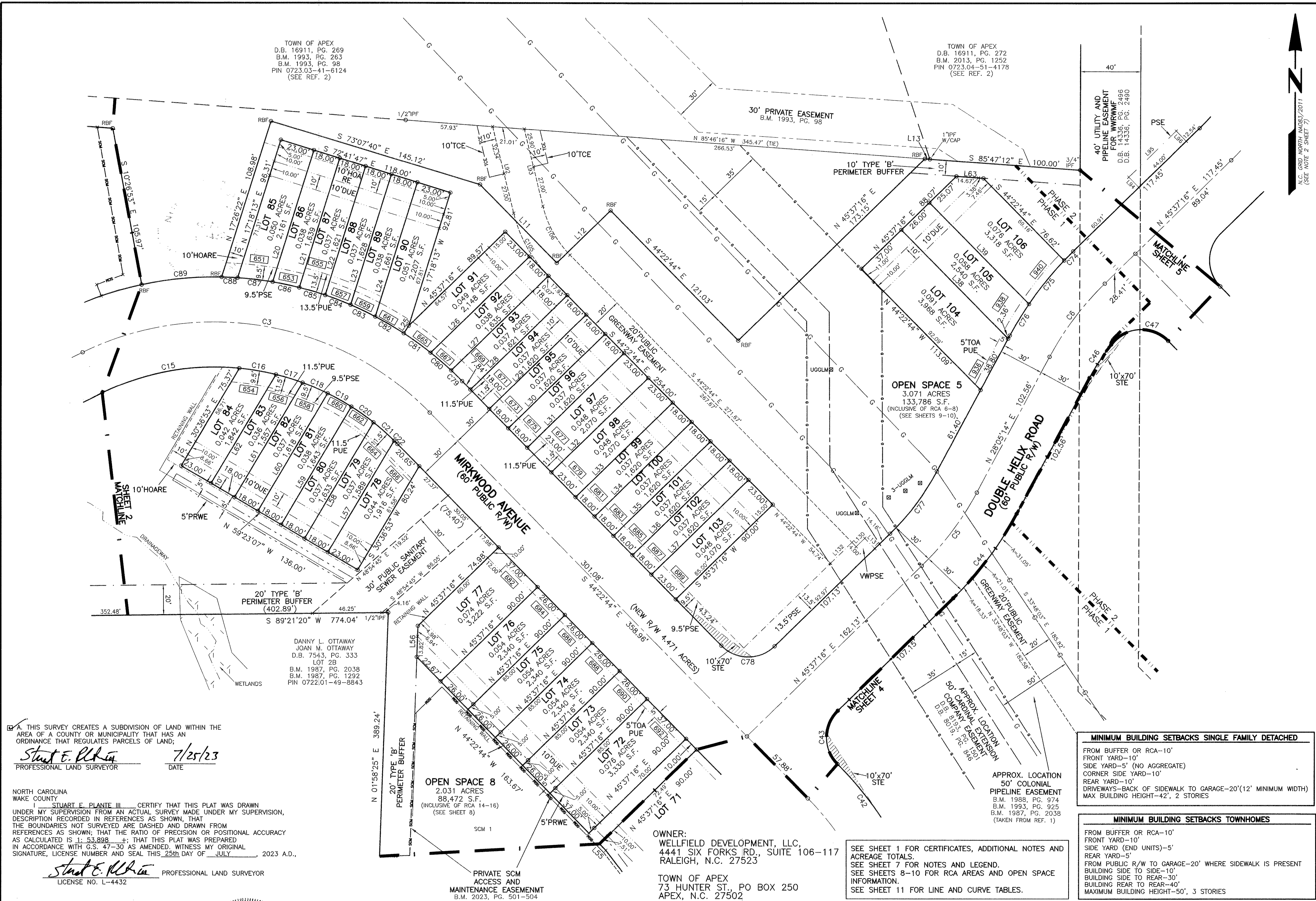


TOWN OF APEX
D.B. 16911, PG. 269
B.M. 1993, PG. 263
B.M. 1993, PG. 98
PIN 0723.03-41-6124
(SEE REF. 2)

TOWN OF APEX
D.B. 16911, PG. 272
B.M. 2013, PG. 1252
PIN 0723.04-51-4178
(SEE REF. 2)



THIS SURVEY CREATES A SUBDIVISION OF LAND WITHIN THE AREA OF A COUNTY OR MUNICIPALITY THAT HAS AN ORDINANCE THAT REGULATES PARCELS OF LAND;
Stuart E. Plante III 7/25/23
PROFESSIONAL LAND SURVEYOR DATE

NORTH CAROLINA WAKE COUNTY
I, STUART E. PLANTE III, CERTIFY THAT THIS PLAT WAS DRAWN UNDER MY SUPERVISION FROM AN ACTUAL SURVEY MADE UNDER MY SUPERVISION, DESCRIPTION RECORDED IN REFERENCES AS SHOWN, THAT THE BOUNDARIES NOT SURVEYED ARE DASHED AND DRAWN FROM REFERENCES AS SHOWN; THAT THE RATIO OF PRECISION OR POSITIONAL ACCURACY AS CALCULATED IS 1: 53,898 ±; THAT THIS PLAT WAS PREPARED IN ACCORDANCE WITH G.S. 47-30 AS AMENDED; WITNESS MY ORIGINAL SIGNATURE, LICENSE NUMBER AND SEAL THIS 25th DAY OF JULY, 2023 A.D.,
Stuart E. Plante III PROFESSIONAL LAND SURVEYOR
LICENSE NO. L-4432

DANNY L. OTTAWAY
JOAN M. OTTAWAY
D.B. 7543, PG. 333
LOT 2B
B.M. 1987, PG. 2038
B.M. 1987, PG. 1292
PIN 0722.01-49-8843

OWNER:
WELLFIELD DEVELOPMENT, LLC,
4441 SIX FORKS RD., SUITE 106-117
RALEIGH, N.C. 27523

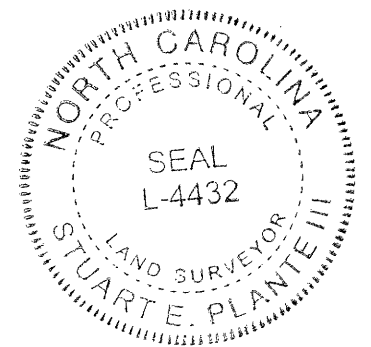
TOWN OF APEX
73 HUNTER ST., PO BOX 250
APEX, N.C. 27502

SEE SHEET 1 FOR CERTIFICATES, ADDITIONAL NOTES AND ACREAGE TOTALS.
SEE SHEET 7 FOR NOTES AND LEGEND.
SEE SHEETS 8-10 FOR RCA AREAS AND OPEN SPACE INFORMATION.
SEE SHEET 11 FOR LINE AND CURVE TABLES.

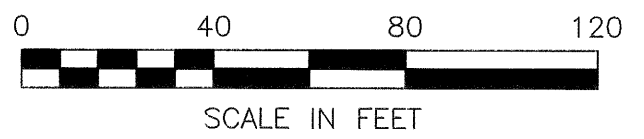
MINIMUM BUILDING SETBACKS SINGLE FAMILY DETACHED
FROM BUFFER OR RCA-10'
FRONT YARD-10'
SIDE YARD-5' (NO AGGREGATE)
CORNER SIDE YARD-10'
REAR YARD-10'
DRIVEWAYS-BACK OF SIDEWALK TO GARAGE-20'(12' MINIMUM WIDTH)
MAX BUILDING HEIGHT-42', 2 STORIES

MINIMUM BUILDING SETBACKS TOWNHOMES
FROM BUFFER OR RCA-10'
FRONT YARD-10'
SIDE YARD (END UNITS)-5'
REAR YARD-5'
FROM PUBLIC R/W TO GARAGE-20' WHERE SIDEWALK IS PRESENT
BUILDING SIDE TO SIDE-10'
BUILDING SIDE TO REAR-30'
BUILDING REAR TO REAR-40'
MAXIMUM BUILDING HEIGHT-50', 3 STORIES

WAKE COUNTY, NC 24
TAMMY L. BRUNNER
REGISTERED OF DEEDS
PRESENTED & RECORDED ON
08/03/2023 12:45:13
BOOK: 2023 PAGE: 01355



NOTE:
MISCLOSURE WAS DISTRIBUTED BY THE COMPASS METHOD. THE DISTANCES ON THIS MAP ARE ADJUSTED HORIZONTAL GROUND DISTANCES UNLESS OTHERWISE NOTED. ALL AREA CALCULATED BY COORDINATE COMPUTATION.



REVISIONS		MASTER SUBDIVISION PLAT FOR		ROBINSON & PLANTE, P.C.	
		THE PARK AT WIMBERLY		LAND SURVEYING	
		PHASES 1 AND 2		C-2687	
		TOWNSHIP: WHITE OAK	COUNTY: WAKE	SURVEY DATE: 7-25-2023	SURVEYED BY: KS
		STATE: NORTH CAROLINA		SCALE: 1"=40'	DRAWN BY: KW
		ZONING: PUD-CZ (ZONING CASE 19C222 AND 21C201)	PIN: 0723.04-50-6472	CHECKED & CLOSURE BY: SEP	FILE: PAWPH1S3 SHEET: 3 OF 11