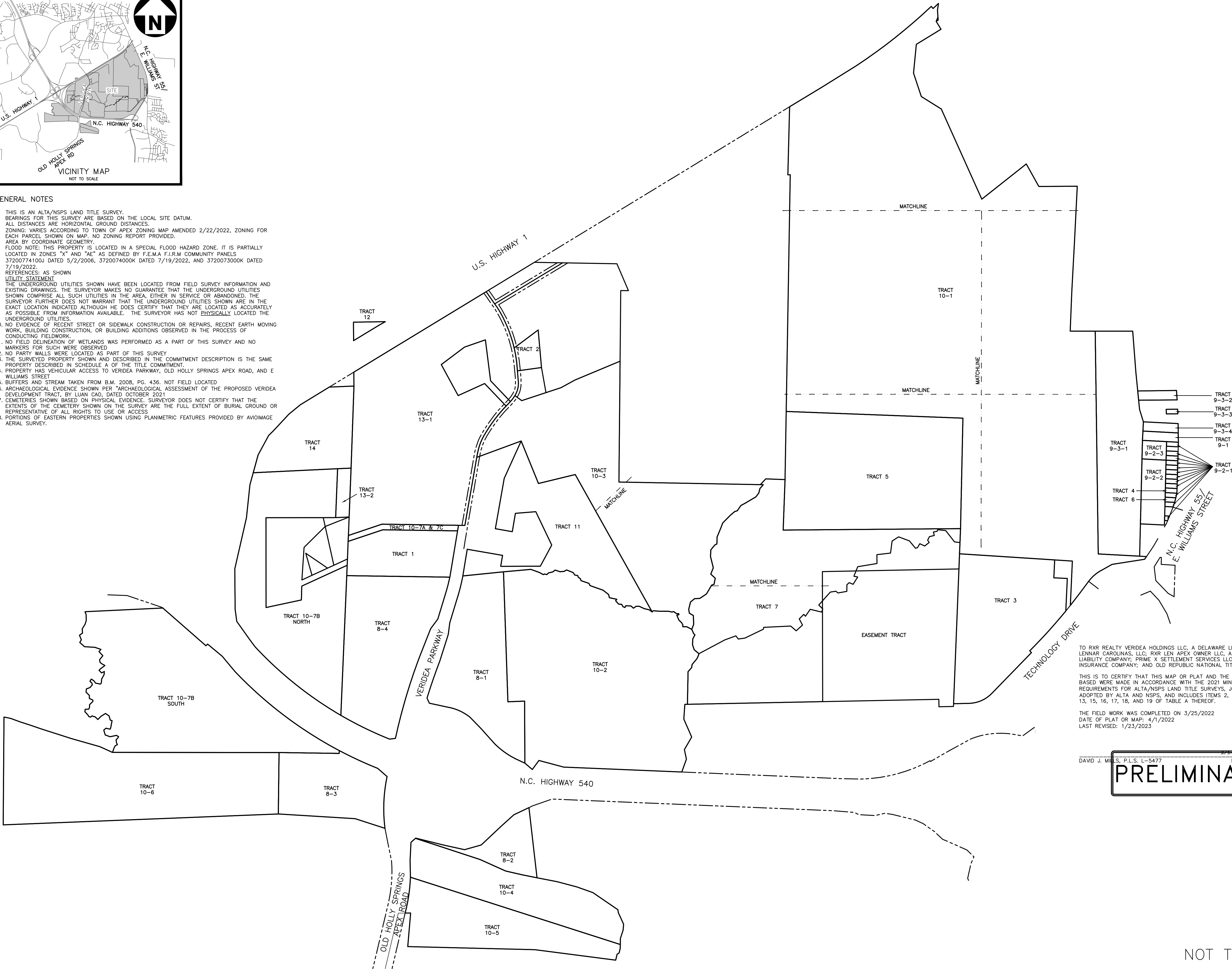


GENERAL NOTES

1. THIS IS AN ALTA/NSPS LAND TITLE SURVEY.
2. BEARINGS FOR THIS SURVEY ARE BASED ON THE LOCAL SITE DATUM.
3. ALL DISTANCES ARE HORIZONTAL GROUND DISTANCES.
4. ZONING: VARIES ACCORDING TO TOWN OF APEX ZONING MAP AMENDED 2/22/2022, ZONING FOR EACH PARCEL SHOWN ON MAP. NO ZONING REPORT PROVIDED.
5. AREA BY COORDINATE GEOMETRY.
6. FLOOD NOTE: THIS PROPERTY IS LOCATED IN A SPECIAL FLOOD HAZARD ZONE. IT IS PARTIALLY LOCATED IN ZONES "X" AND "AE" AS DEFINED BY F.E.M.A F.I.R.M COMMUNITY PANELS 37200774100J DATED 5/2/2006, 3720074000K DATED 7/19/2022, AND 3720073000K DATED 7/19/2022.
7. REFERENCES: AS SHOWN
8. UTILITY STATEMENT  
THE UNDERGROUND UTILITIES SHOWN HAVE BEEN LOCATED FROM FIELD SURVEY INFORMATION AND EXISTING DRAWINGS. THE SURVEYOR MAKES NO GUARANTEE THAT THE UNDERGROUND UTILITIES SHOWN COMPRISE ALL SUCH UTILITIES IN THE AREA, EITHER IN SERVICE OR ABANDONED. THE SURVEYOR FURTHER DOES NOT WARRANT THAT THE UNDERGROUND UTILITIES SHOWN ARE IN THE EXACT LOCATION INDICATED ALTHOUGH HE DOES CERTIFY THAT THEY ARE LOCATED AS ACCURATELY AS POSSIBLE FROM INFORMATION AVAILABLE. THE SURVEYOR HAS NOT PHYSICALLY LOCATED THE UNDERGROUND UTILITIES.
10. NO EVIDENCE OF RECENT STREET OR SIDEWALK CONSTRUCTION OR REPAIRS, RECENT EARTH MOVING WORK, BUILDING CONSTRUCTION, OR BUILDING ADDITIONS OBSERVED IN THE PROCESS OF CONDUCTING FIELDWORK.
11. NO FIELD DELINEATION OF WETLANDS WAS PERFORMED AS A PART OF THIS SURVEY AND NO MARKERS FOR SUCH WERE OBSERVED
12. NO PARTY WALLS WERE LOCATED AS PART OF THIS SURVEY
13. THE SURVEYED PROPERTY SHOWN AND DESCRIBED IN THE COMMITMENT DESCRIPTION IS THE SAME PROPERTY DESCRIBED IN SCHEDULE A OF THE TITLE COMMITMENT.
14. PROPERTY HAS VEHICULAR ACCESS TO VERIDEA PARKWAY, OLD HOLLY SPRINGS APEX ROAD, AND E WILLIAMS STREET
15. BUFFERS AND STREAM TAKEN FROM B.M. 2008, PG. 436. NOT FIELD LOCATED
16. ARCHAEOLOGICAL EVIDENCE SHOWN PER "ARCHAEOLOGICAL ASSESSMENT OF THE PROPOSED VERIDEA DEVELOPMENT TRACT, BY LUAN CAO, DATED OCTOBER 2021
17. CEMETERIES SHOWN BASED ON PHYSICAL EVIDENCE. SURVEYOR DOES NOT CERTIFY THAT THE EXTENTS OF THE CEMETERY SHOWN ON THE SURVEY ARE THE FULL EXTENT OF BURIAL GROUND OR REPRESENTATIVE OF ALL RIGHTS TO USE OR ACCESS
18. PORTIONS OF EASTERN PROPERTIES SHOWN USING PLANIMETRIC FEATURES PROVIDED BY AVOIMAGE AERIAL SURVEY.



TRACTS 1, 2, 3, 4, 5, 6, 7 NORTH, 8-1, 8-4, 9-1, 9-2-1, 9-2-2, 9-2-3, 9-3-1, 9-3-2, 9-3-4, 10-1, 10-2, 10-3, 10-7A&C, 10-7B NORTH, 11, 13-1, 13-2, 14

BEGINNING AT A POINT ON THE SOUTHERN RIGHT OF WAY OF U.S. HIGHWAY 1, SAID POINT BEING THE NORTHWEST CORNER OF TRACT I-A, AS SHOWN ON BOOK OF MAPS 2003, PAGE 398 OF THE WAKE COUNTY REGISTRY; THENCE WITH SAID RIGHT OF WAY NORTH 58°51'35" EAST A DISTANCE OF 406.60 FEET TO A CONCRETE MONUMENT; THENCE NORTH 58°00'23" EAST A DISTANCE OF 434.93 FEET TO A POINT; THENCE WITH A CURVE TO THE LEFT A RADIUS OF 5,860.99 FEET, AN ARC LENGTH OF 1,031.97 FEET, A CHORD BEARING OF NORTH 51°39'15" EAST, A CHORD LENGTH OF 1,030.63 FEET TO A POINT; THENCE SOUTH 41°41'54" EAST A DISTANCE OF 29.56 FEET TO A POINT; THENCE NORTH 46°57'49" EAST A DISTANCE OF 79.93 FEET TO A POINT, THE COMMON CORNER OF LOT 2 A SHOWN ON BOOK OF MAPS 1996, PAGE 667; THENCE WITH SAID COMMON LINE SOUTH 08°18'39" WEST A DISTANCE OF 74.71 FEET TO A POINT; THENCE SOUTH 03°57'01" EAST A DISTANCE OF 106.42 FEET TO A POINT ON THE COMMON LINE OF JUSTIN STANLEY; THENCE WITH SAID COMMON LINE SOUTH 58°19'32" WEST A DISTANCE OF 25.09 FEET TO A POINT; THENCE SOUTH 31°28'08" EAST A DISTANCE OF 99.98 FEET TO A POINT IN THE NORTH LINE OF THE TRACT SHOWN ON BOOK OF MAPS 1999, PAGE 1145; THENCE WITH SAID COMMON LINE SOUTH 58°37'43" WEST A DISTANCE OF 311.61 FEET TO A POINT; THENCE SOUTH 05°32'28" WEST A DISTANCE OF 311.05 FEET TO A POINT; THENCE SOUTH 18°18'17" EAST A DISTANCE OF 266.26 FEET TO A POINT; THENCE SOUTH 58°02'56" EAST A DISTANCE OF 253.73 FEET TO AN IRON PIPE; THENCE SOUTH 24°13'34" EAST A DISTANCE OF 1064.47 FEET TO AN IRON PIPE; THENCE NORTH 51°40'44" EAST A DISTANCE OF 610.52 FEET TO A POINT, THE COMMON CORNER OF FTPA STORAGE APEX LLC; THENCE WITH SAID COMMON LINE SOUTH 29°10'43" EAST A DISTANCE OF 276.67 FEET TO A POINT, THE SOUTHWEST CORNER OF THE TRACT SHOWN ON BOOK OF MAPS 2004, PAGE 593; THENCE WITH SAID COMMON LINE NORTH 89°42'08" EAST A DISTANCE OF 414.38 FEET TO AN IRON PIPE, THE NORTHWEST CORNER OF TRACT B, AS SHOWN ON BOOK OF MAPS 1986, PAGE 855; THENCE WITH SAID COMMON LINE SOUTH 02°52'31" WEST A DISTANCE OF 576.07 FEET TO AN IRON PIPE, THE NORTHWEST CORNER OF PPTAPEX LLC; THENCE WITH SAID COMMON LINE SOUTH 03°02'31" WEST A DISTANCE OF 260.47 FEET TO AN IRON PIPE, THE NORTHWEST CORNER OF JAMES IRVIN RIGSBEE; THENCE WITH SAID COMMON LINE SOUTH 03°08'36" WEST A DISTANCE OF 288.05 FEET TO AN IRON PIPE; THENCE SOUTH 02°21'58" WEST A DISTANCE OF 72.79 FEET TO AN AXLE, THE NORTHWEST CORNER OF KENAN TRANSPORT CO; THENCE WITH SAID COMMON LINE SOUTH 02°22'52" WEST A DISTANCE OF 365.20 FEET TO AN IRON PIPE; THENCE SOUTH 89°54'31" EAST A DISTANCE OF 270.03 FEET TO A POINT; THENCE SOUTH 89°55'44" EAST A DISTANCE OF 403.93 FEET TO A POINT, THE NORTHWEST CORNER OF DAVID RAYMER; THENCE WITH SAID COMMON LINE SOUTH 04°23'01" EAST A DISTANCE OF 445.52 FEET TO AN IRON PIPE, THE NORTHWEST CORNER OF THOMPSON GAS-SMOKIES LLC; THENCE WITH SAID COMMON LINE SOUTH 05°37'02" EAST A DISTANCE OF 199.93 FEET TO AN IRON PIPE; THENCE NORTH 89°21'15" EAST A DISTANCE OF 417.22 FEET TO A POINT ON THE WESTERN RIGHT OF WAY OF NORTH CAROLINA HIGHWAY 55; THENCE WITH SAID RIGHT OF WAY, A CURVE TO THE RIGHT, A RADIUS OF 5,633.75 FEET, AN ARC LENGTH OF 101.71 FEET, A CHORD BEARING OF SOUTH 04°07'50" EAST, A CHORD LENGTH OF 101.71 FEET TO AN IRON PIPE, THE COMMON CORNER OF DEXTER RAY; THENCE WITH SAID COMMON LINE AND THE LINE OF DAVID PAGE HEIRS, SOUTH 89°36'58" WEST A DISTANCE OF 414.74 FEET TO A POINT; THENCE SOUTH 05°37'02" EAST A DISTANCE OF 100.00 FEET TO A POINT, THE NORTHWEST CORNER OF CROWN BUILDERS AND DEVELOPERS OF NC, LLC; THENCE WITH SAID COMMON LINE SOUTH 17°12'56" EAST A DISTANCE OF 140.08 FEET TO AN IRON PIPE; THENCE SOUTH 87°06'10" EAST A DISTANCE OF 374.27 FEET TO AN IRON PIPE ON THE WESTERN RIGHT OF WAY OF SAID

HIGHWAY 55; THENCE WITH SAID RIGHT OF WAY, A CURVE TO THE RIGHT A RADIUS OF 5,633.75 FEET, AN ARC LENGTH OF 100.26 FEET, A CHORD BEARING OF SOUTH 00°30'27" EAST, A CHORD LENGTH OF 100.26 FEET TO A POINT; THENCE SOUTH 01°41'54" EAST A DISTANCE OF 100.29 FEET TO A POINT; THENCE SOUTH 01°45'44" WEST A DISTANCE OF 49.94 FEET TO A POINT ON THE NORTH LINE OF LOT 22 AS SHOWN ON BOOK OF MAPS 1948, PAGE 18; THENCE WITH SAID COMMON LINE NORTH 87°04'26" WEST A DISTANCE OF 127.90 FEET TO A POINT; THENCE SOUTH 01°28'23" WEST A DISTANCE OF 50.04 FEET TO A POINT; THENCE SOUTH 87°06'47" EAST A DISTANCE OF 127.65 FEET TO A POINT ON THE WEST RIGHT OF WAY OF SAID HIGHWAY 55; THENCE WITH SAID RIGHT OF WAY SOUTH 01°45'44" WEST A DISTANCE OF 49.94 FEET TO A POINT; THENCE SOUTH 01°45'44" WEST A DISTANCE OF 49.94 FEET TO A POINT; THENCE SOUTH 01°45'44" WEST A DISTANCE OF 49.94 FEET TO A POINT; THENCE SOUTH 01°45'44" WEST A DISTANCE OF 49.94 FEET TO A POINT; THENCE SOUTH 01°45'44" WEST A DISTANCE OF 49.79 FEET TO A POINT; THENCE SOUTH 01°45'44" WEST A DISTANCE OF 50.00 FEET TO A POINT; THENCE SOUTH 01°45'44" WEST A DISTANCE OF 50.00 FEET TO A POINT; THENCE SOUTH 01°45'44" WEST A DISTANCE OF 50.00 FEET TO A POINT; THENCE SOUTH 12°49'18" WEST A DISTANCE OF 50.78 FEET TO A POINT; THENCE SOUTH 14°56'39" WEST A DISTANCE OF 51.10 FEET TO A CONCRETE MONUMENT; THENCE SOUTH 17°33'36" WEST A DISTANCE OF 51.76 FEET TO A CONCRETE MONUMENT ON THE NORTH LINE OF LOT 9, AS SHOWN ON BOOK OF MAPS 1948, PAGE 18; THENCE WITH SAID COMMON LINE NORTH 86°43'05" WEST A DISTANCE OF 89.07 FEET TO A POINT; THENCE SOUTH 01°28'00" WEST A DISTANCE OF 100.88 FEET TO A POINT; THENCE SOUTH 87°17'00" EAST A DISTANCE OF 51.62 FEET TO A POINT ON THE WESTERN RIGHT OF WAY OF SAID HIGHWAY 55; THENCE WITH SAID RIGHT OF WAY SOUTH 22°15'24" WEST A DISTANCE OF 53.04 FEET TO A POINT ON THE NORTHERN LINE OF LOT 6 AS SHOWN ON BOOK OF MAPS 1948, PAGE 18; THENCE WITH SAID COMMON LINE NORTH 87°17'00" WEST A DISTANCE OF 32.79 FEET TO A POINT; THENCE SOUTH 01°28'00" WEST A DISTANCE OF 48.52 FEET TO A POINT ON THE NORTHERN LINE OF THE NORTH CAROLINA DEPARTMENT OF TRANSPORTATION; THENCE WITH SAID COMMON LINE NORTH 87°21'16" WEST A DISTANCE OF 259.05 FEET TO A POINT; THENCE SOUTH 01°23'44" WEST A DISTANCE OF 347.79 FEET TO AN IRON PIPE; THENCE SOUTH 86°24'46" EAST A DISTANCE OF 74.06 FEET TO A POINT ON THE WESTERN RIGHT OF WAY OF SAID HIGHWAY 55; THENCE WITH SAID RIGHT OF WAY SOUTH 34°48'30" WEST A DISTANCE OF 35.57 FEET TO A CONCRETE MONUMENT ON THE NORTHERN RIGHT OF WAY OF TECHNOLOGY DRIVE, AS SHOWN ON BOOK OF MAPS 2003, PAGE 398; THENCE WITH SAID RIGHT OF WAY SOUTH 81°05'32" WEST A DISTANCE OF 355.21 FEET TO A POINT; THENCE SOUTH 60°43'09" WEST A DISTANCE OF 132.34 FEET TO A POINT; THENCE A CURVE TO THE LEFT, A RADIUS OF 426.43 FEET, AN ARC LENGTH OF 181.19 FEET, A CHORD BEARING OF SOUTH 49°06'58" WEST, A CHORD LENGTH OF 179.83 FEET TO A POINT; THENCE SOUTH 36°56'38" WEST A DISTANCE OF 162.54 FEET TO A POINT; THENCE SOUTH 37°44'51" WEST A DISTANCE OF 163.20 FEET TO A POINT ON THE EASTERN LINE OF THE BREGMAN TRACT SHOWN ON BOOK OF MAPS 2002, PAGE 165; THENCE WITH SAID COMMON LINE NORTH 02°38'53" EAST A DISTANCE OF 477.63 FEET TO AN IRON PIPE; THENCE NORTH 86°17'11" WEST A DISTANCE OF 191.04 FEET TO AN IRON PIPE; THENCE SOUTH 02°37'54" WEST A DISTANCE OF 192.78 FEET TO AN IRON PIPE; THENCE SOUTH 87°21'03" EAST A DISTANCE OF 144.87 FEET TO A POINT; THENCE SOUTH 02°38'53" WEST A DISTANCE OF 351.16 FEET TO A POINT ON THE NORTHER RIGHT OF WAY OF SAID TECHNOLOGY DRIVE; THENCE WITH SAID RIGHT OF WAY, A CURVE TO THE RIGHT, A RADIUS OF 5,840.02 FEET, AN ARC LENGTH OF 578.81 FEET, A CHORD BEARING OF SOUTH 42°11'18" WEST, A CHORD LENGTH OF 578.57 FEET TO A POINT; THENCE SOUTH 45°24'35" EAST A DISTANCE OF 26.85 FEET TO A POINT; THENCE

SOUTH 44°12'36" WEST A DISTANCE OF 620.76 FEET TO A POINT; THENCE A CURVE TO THE RIGHT, A RADIUS OF 351.98 FEET, AN ARC LENGTH OF 268.88 FEET, A CHORD BEARING OF SOUTH 67°02'07" WEST, A CHORD LENGTH OF 262.39 FEET TO A POINT; THENCE SOUTH 88°52'01" WEST A DISTANCE OF 164.86 FEET TO A POINT THE SOUTHEAST CORNER OF THE TRACT SHOWN ON BOOK OF MAPS 2000, PAGE 1920; THENCE WITH SAID COMMON LINE NORTH 02°16'22" EAST A DISTANCE OF 50.18 FEET TO AN IRON PIPE; THENCE NORTH 02°17'00" EAST A DISTANCE OF 1,402.38 FEET TO A POINT; THENCE NORTH 02°17'00" EAST A DISTANCE OF 163.32 FEET TO AN IRON PIPE ON THE EASTERN LINE OF TRACT 1, AS SHOWN ON BOOK OF MAPS 2009, PAGE 884; THENCE WITH SAID COMMON LINE NORTH 02°11'42" EAST A DISTANCE OF 120.99 FEET TO A POINT NEAR THE CREEK AS SHOWN ON THE AFORE SAID MAP; THENCE GENERALLY WITH THE COURSE OF SAID CREEK AS SHOWN ON THE AFORE SAID MAP, NORTH 82°46'29" WEST A DISTANCE OF 59.32 FEET TO A POINT; THENCE NORTH 38°01'48" WEST A DISTANCE OF 154.60 FEET TO A POINT; THENCE NORTH 84°02'09" WEST A DISTANCE OF 86.70 FEET TO A POINT; THENCE SOUTH 20°44'56" WEST A DISTANCE OF 18.43 FEET TO A POINT; THENCE SOUTH 79°18'34" WEST A DISTANCE OF 39.77 FEET TO A POINT; THENCE SOUTH 13°19'46" EAST A DISTANCE OF 38.31 FEET TO A POINT; THENCE SOUTH 76°35'49" WEST A DISTANCE OF 53.23 FEET TO A POINT; THENCE SOUTH 26°54'51" WEST A DISTANCE OF 42.90 FEET TO A POINT; THENCE SOUTH 33°19'02" EAST A DISTANCE OF 29.87 FEET TO A POINT; THENCE SOUTH 51°46'22" WEST A DISTANCE OF 61.75 FEET TO A POINT; THENCE NORTH 64°34'50" WEST A DISTANCE OF 58.31 FEET TO A POINT; THENCE SOUTH 29°34'47" WEST A DISTANCE OF 47.94 FEET TO A POINT; THENCE SOUTH 71°40'28" WEST A DISTANCE OF 23.79 FEET TO A POINT; THENCE NORTH 39°32'53" WEST A DISTANCE OF 102.73 FEET TO A POINT; THENCE NORTH 69°26'41" WEST A DISTANCE OF 124.25 FEET TO A POINT; THENCE SOUTH 57°24'05" WEST A DISTANCE OF 82.87 FEET TO A POINT; THENCE SOUTH 07°43'11" WEST A DISTANCE OF 131.15 FEET TO A POINT; THENCE SOUTH 83°27'25" WEST A DISTANCE OF 147.78 FEET TO A POINT; THENCE SOUTH 00°36'20" EAST A DISTANCE OF 95.70 FEET TO A POINT; THENCE SOUTH 80°37'14" WEST A DISTANCE OF 210.03 FEET TO A POINT; THENCE SOUTH 21°46'20" WEST A DISTANCE OF 110.71 FEET TO A POINT; THENCE SOUTH 78°48'03" EAST A DISTANCE OF 41.76 FEET TO A POINT; THENCE SOUTH 32°29'11" WEST A DISTANCE OF 93.04 FEET TO A POINT; THENCE NORTH 66°26'02" WEST A DISTANCE OF 45.02 FEET TO A POINT; THENCE SOUTH 47°52'32" WEST A DISTANCE OF 34.12 FEET TO A POINT; THENCE SOUTH 00°28'52" WEST A DISTANCE OF 71.12 FEET TO A POINT; THENCE SOUTH 79°33'24" WEST A DISTANCE OF 96.46 FEET TO A POINT; THENCE NORTH 52°02'42" WEST A DISTANCE OF 30.57 FEET TO A POINT; THENCE SOUTH 81°23'08" WEST A DISTANCE OF 60.05 FEET TO A POINT; THENCE SOUTH 41°39'40" WEST A DISTANCE OF 186.48 FEET TO A POINT; THENCE SOUTH 44°48'01" EAST A DISTANCE OF 60.58 FEET TO A POINT; THENCE SOUTH 20°16'03" WEST A DISTANCE OF 35.02 FEET TO A POINT; THENCE NORTH 76°32'52" WEST A DISTANCE OF 126.07 FEET TO A POINT; THENCE SOUTH 34°49'57" WEST A DISTANCE OF 90.84 FEET TO A POINT; THENCE NORTH 41°34'57" WEST A DISTANCE OF 26.79 FEET TO A POINT; THENCE SOUTH 44°48'57" WEST A DISTANCE OF 69.31 FEET TO A POINT; THENCE SOUTH 28°17'36" EAST A DISTANCE OF 74.29 FEET TO A POINT; THENCE SOUTH 47°29'27" WEST A DISTANCE OF 92.11 FEET TO A POINT; THENCE NORTH 49°33'56" WEST A DISTANCE OF 78.37 FEET TO A POINT; THENCE SOUTH 87°17'25" WEST A DISTANCE OF 290.72 FEET TO A POINT; THENCE SOUTH 11°44'33" WEST A DISTANCE OF 20.66 FEET TO A POINT; THENCE SOUTH 64°16'17" WEST A DISTANCE OF 220.45 FEET TO A POINT; THENCE SOUTH 82°21'19" WEST A DISTANCE OF 72.19 FEET TO A POINT; THENCE NORTH 36°16'44" WEST A DISTANCE OF 42.40 FEET TO A POINT; THENCE SOUTH 69°36'51" WEST A DISTANCE OF 126.77 FEET TO A POINT; THENCE SOUTH 62°06'56" WEST A DISTANCE OF 316.17 FEET TO A POINT IN THE CENTERLINE OF WHITE OAK CREEK; THENCE WITH SAID CREEK SOUTH

17°45'27" WEST A DISTANCE OF 29.26 FEET TO A POINT; THENCE SOUTH 26°24'46" WEST A DISTANCE OF 31.72 FEET TO A POINT; THENCE SOUTH 40°05'18" WEST A DISTANCE OF 78.74 FEET TO A POINT; THENCE SOUTH 07°45'39" WEST A DISTANCE OF 35.25 FEET TO A POINT; THENCE SOUTH 42°06'24" WEST A DISTANCE OF 57.16 FEET TO A POINT; THENCE SOUTH 01°06'28" WEST A DISTANCE OF 351.89 FEET TO AN IRON PIPE ON THE NORTHERN LINE OF GREENWAY WASTE SOLUTIONS OF APEX LLC; THENCE WITH SAID COMMON LINE SOUTH 88°51'48" WEST A DISTANCE OF 28.47 FEET TO A POINT; THENCE SOUTH 03°52'45" WEST A DISTANCE OF 158.77 FEET TO A POINT; THENCE SOUTH 23°38'07" EAST A DISTANCE OF 210.79 FEET TO A POINT; THENCE SOUTH 30°01'31" WEST A DISTANCE OF 156.29 FEET TO A POINT; THENCE SOUTH 11°48'54" EAST A DISTANCE OF 104.71 FEET TO A POINT; THENCE SOUTH 19°26'04" WEST A DISTANCE OF 147.77 FEET TO A POINT ON THE NORTHERN RIGHT OF WAY OF NORTH CAROLINA HIGHWAY 540; THENCE WITH SAID RIGHT OF WAY NORTH 87°35'38" WEST A DISTANCE OF 1,273.34 FEET TO AN IRON PIPE; THENCE NORTH 75°03'53" WEST A DISTANCE OF 276.59 FEET TO AN IRON PIPE; THENCE SOUTH 36°13'41" WEST A DISTANCE OF 120.37 FEET TO AN IRON PIPE; THENCE NORTH 49°31'49" WEST A DISTANCE OF 105.40 FEET TO AN IRON PIPE; THENCE NORTH 65°24'12" WEST A DISTANCE OF 112.48 FEET TO A CONCRETE MONUMENT; THENCE A CURVE TO THE RIGHT, A RADIUS OF 865.00 FEET, AN ARC LENGTH OF 261.30 FEET, A CHORD BEARING OF NORTH 54°43'51" WEST, A CHORD LENGTH OF 260.31 FEET TO A CONCRETE MONUMENT; THENCE NORTH 42°11'22" WEST A DISTANCE OF 182.87 FEET TO A CONCRETE MONUMENT; THENCE NORTH 40°19'02" WEST A DISTANCE OF 35.61 FEET TO A POINT; THENCE NORTH 44°05'45" WEST A DISTANCE OF 184.73 FEET TO A CONCRETE MONUMENT; THENCE WITH A CURVE TO THE LEFT A RADIUS OF 534.00 FEET, AN ARC LENGTH OF 249.50 FEET, A CHORD BEARING OF NORTH 64°32'31" WEST, A CHORD LENGTH OF 247.24 FEET TO A CONCRETE MONUMENT; THENCE NORTH 77°55'37" WEST A DISTANCE OF 220.93 FEET TO A CONCRETE MONUMENT; THENCE NORTH 25°05'55" WEST A DISTANCE OF 60.93 FEET TO A CONCRETE MONUMENT ON THE RIGHT OF WAY OF VERIDEA PARKWAY; THENCE WITH SAID RIGHT OF WAY, A CURVE TO THE RIGHT, A RADIUS OF 5,930.50 FEET, AN ARC LENGTH OF 363.87 FEET, A CHORD BEARING OF NORTH 18°48'19" EAST, A CHORD LENGTH OF 363.81 FEET TO A POINT; THENCE NORTH 20°49'17" EAST A DISTANCE OF 59.37 FEET TO A POINT; THENCE NORTH 17°36'52" EAST A DISTANCE OF 299.95 FEET TO A POINT; THENCE NORTH 07°20'42" EAST A DISTANCE OF 127.17 FEET TO A POINT; THENCE NORTH 16°56'54" EAST A DISTANCE OF 296.14 FEET TO A POINT; THENCE A CURVE TO THE LEFT, A RADIUS OF 2,067.50 FEET, AN ARC LENGTH OF 227.29 FEET, A CHORD BEARING OF NORTH 13°47'56" EAST, A CHORD LENGTH OF 227.18 FEET TO A POINT; THENCE NORTH 09°16'52" EAST A DISTANCE OF 6.98 FEET TO A POINT; THENCE NORTH 09°16'52" EAST A DISTANCE OF 31.69 FEET TO A POINT; THENCE NORTH 09°28'48" EAST A DISTANCE OF 166.90 FEET TO A POINT; THENCE NORTH 09°28'48" EAST A DISTANCE OF 13.32 FEET TO A POINT; THENCE NORTH 09°28'48" EAST A DISTANCE OF 17.71 FEET TO A POINT; THENCE NORTH 09°28'48" EAST A DISTANCE OF 55.05 FEET TO A POINT ON THE SOUTHERN LINE OF ROGER BUSHEE; THENCE WITH SAID COMMON LINE SOUTH 80°05'31" EAST A DISTANCE OF 386.35 FEET TO AN IRON PIPE, AS SHOWN ON THE WESTERN LINE OF THE 5.00 ACRE TRACT SHOWN ON BOOK OF MAPS 1998, PAGE 1052; THENCE WITH SAID COMMON LINE SOUTH 09°53'16" WEST A DISTANCE OF 120.00 FEET TO AN IRON PIPE; THENCE NORTH 89°42'24" EAST A DISTANCE OF 427.65 FEET TO AN IRON PIPE; THENCE NORTH 28°17'19" EAST A DISTANCE OF 258.03 FEET TO A POINT; THENCE NORTH 25°29'27" WEST A DISTANCE OF 398.53 FEET TO A POINT; THENCE SOUTH 85°22'14" WEST A DISTANCE OF 220.54 FEET TO A POINT; THENCE SOUTH 09°39'36" WEST A DISTANCE OF 200.09 FEET TO A POINT, THE NORTHEAST CORNER OF ROGER BUSHEE; THENCE WITH SAID COMMON LINE NORTH 80°09'19" WEST A DISTANCE OF 185.05 FEET TO A POINT, THE SOUTHWEST CORNER OF WJ FIELDS; THENCE WITH

SAID COMMON LINE OF FIELDS AND OTHERS NORTH 09°58'01" EAST A DISTANCE OF 550.14 FEET TO A POINT, THE SOUTHEAST CORNER OF WHITEHOUSE ASSETS MANAGEMENT, LLC; THENCE WITH SAID COMMON LINE NORTH 24°25'22" EAST A DISTANCE OF 442.30 FEET TO A POINT; THENCE SOUTH 69°45'18" WEST A DISTANCE OF 509.98 FEET TO A REBAR IN THE CENTERLINE OF VERIDEA PARKWAY; THENCE WITH SAID LINE SOUTH 09°52'33" WEST A DISTANCE OF 171.70 FEET TO A POINT; THENCE SOUTH 09°57'23" WEST A DISTANCE OF 550.24 FEET TO A POINT; THENCE SOUTH 09°26'46" WEST A DISTANCE OF 21.55 FEET TO A POINT; THENCE NORTH 89°10'45" WEST A DISTANCE OF 68.12 FEET TO A POINT ON THE WESTERN RIGHT OF WAY OF VERIDEA PARKWAY; THENCE WITH SAID RIGHT OF WAY SOUTH 09°28'47" WEST A DISTANCE OF 60.77 FEET TO A CONCRETE MONUMENT; THENCE SOUTH 09°28'45" WEST A DISTANCE OF 430.91 FEET TO A CONCRETE MONUMENT; THENCE SOUTH 09°46'52" WEST A DISTANCE OF 74.87 FEET TO A CONCRETE MONUMENT; THENCE A CURVE TO THE RIGHT, A RADIUS OF 1,933.03 FEET, AN ARC LENGTH OF 173.41 FEET, A CHORD BEARING OF SOUTH 14°22'33" WEST, A CHORD LENGTH OF 173.35 FEET TO A POINT; THENCE SOUTH 16°56'46" WEST A DISTANCE OF 296.14 FEET TO A POINT; THENCE SOUTH 36°46'38" WEST A DISTANCE OF 128.94 FEET TO A POINT; THENCE SOUTH 21°28'31" WEST A DISTANCE OF 304.38 FEET TO A POINT; THENCE SOUTH 20°42'10" WEST A DISTANCE OF 61.19 FEET TO A POINT; THENCE A CURVE TO THE LEFT, A RADIUS OF 6,150.50 FEET, AN ARC LENGTH OF 428.45 FEET, A CHORD BEARING OF SOUTH 18°25'23" WEST, A CHORD LENGTH OF 428.36 FEET TO A CONCRETE MONUMENT; THENCE A CURVE TO THE LEFT, A RADIUS OF 6,150.50 FEET, AN ARC LENGTH OF 203.98 FEET, A CHORD BEARING OF SOUTH 15°28'40" WEST, A CHORD LENGTH OF 203.97 FEET TO A CONCRETE MONUMENT; THENCE A CURVE TO THE LEFT A RADIUS OF 6,150.50 FEET, AN ARC LENGTH OF 244.84 FEET, A CHORD BEARING OF SOUTH 13°23'14" WEST, A CHORD LENGTH OF 244.82 FEET TO A CONCRETE MONUMENT; THENCE SOUTH 82°34'50" WEST A DISTANCE OF 63.94 FEET TO A CONCRETE MONUMENT ON THE NORTHERN RIGHT OF WAY OF NORTH CAROLINA HIGHWAY 540; THENCE WITH SAID RIGHT OF WAY, A CURVE TO THE RIGHT, A RADIUS OF 4,035.00 FEET, AN ARC LENGTH OF 584.49 FEET, A CHORD BEARING OF NORTH 63°59'55" WEST, A CHORD LENGTH OF 583.98 FEET TO A POINT; THENCE A CURVE TO THE RIGHT, A RADIUS OF 4,035.00 FEET, AN ARC LENGTH OF 857.09 FEET, A CHORD BEARING OF NORTH 53°42'27" WEST, A CHORD LENGTH OF 855.48 FEET TO AN IRON PIPE; THENCE A CURVE TO THE RIGHT, A RADIUS OF 4,054.26 FEET, AN ARC LENGTH OF 326.65 FEET, A CHORD BEARING OF NORTH 45°18'10" WEST, A CHORD LENGTH OF 326.56 FEET TO AN IRON PIPE; THENCE NORTH 36°43'15" WEST A DISTANCE OF 102.76 FEET TO AN IRON PIPE; THENCE NORTH 35°20'20" WEST A DISTANCE OF 237.13 FEET TO AN IRON PIPE; THENCE NORTH 07°47'12" WEST A DISTANCE OF 131.08 FEET TO AN IRON PIPE; THENCE NORTH 00°34'29" WEST A DISTANCE OF 436.11 FEET TO AN IRON PIPE; THENCE NORTH 12°52'53" EAST A DISTANCE OF 565.14 FEET TO AN IRON PIPE; THENCE NORTH 05°57'15" EAST A DISTANCE OF 356.74 FEET TO AN IRON PIPE; THENCE NORTH 15°26'08" EAST A DISTANCE OF 134.33 FEET TO A POINT; THENCE NORTH 15°26'08" EAST A DISTANCE OF 200.01 FEET TO AN IRON PIPE; THENCE NORTH 28°28'53" EAST A DISTANCE OF 237.21 FEET TO AN IRON PIPE; THENCE NORTH 45°14'54" EAST A DISTANCE OF 75.20 FEET TO AN IRON PIPE; THENCE NORTH 42°51'55" EAST A DISTANCE OF 241.20 FEET TO AN IRON PIPE; THENCE NORTH 50°43'55" EAST A DISTANCE OF 160.95 FEET TO AN IRON PIPE ON THE SOUTHERN RIGHT OF WAY US HIGHWAY 1; THENCE WITH SAID RIGHT OF WAY NORTH 58°37'05" EAST A DISTANCE OF 364.36 FEET TO A POINT ON THE SOUTHERN LINE OF YMCA OF THE TRIANGLE; THENCE WITH SAID COMMON LINE NORTH 87°38'44" EAST A DISTANCE OF 265.82 FEET TO A POINT; THENCE NORTH 00°27'33" WEST A DISTANCE OF 149.91 FEET TO A POINT ON THE SOUTHERN RIGHT OF WAY OF SAID US HIGHWAY 1; THENCE WITH SAID RIGHT OF WAY NORTH 58°41'20" EAST A DISTANCE OF 1,668.68 FEET TO A POINT IN

THE CENTERLINE OF VERIDEA PARKWAY, THE COMMON CORNER OF TRACT 2 AS SHOWN ON BOOK OF MAPS 1978, PAGE 731; THENCE WITH SAID CENTERLINE SOUTH 34°51'52" EAST A DISTANCE OF 160.69 FEET TO A POINT; THENCE SOUTH 34°51'52" EAST A DISTANCE OF 29.87 FEET TO A POINT; THENCE WITH A CURVE TO THE RIGHT A RADIUS OF 1,153.78 FEET, AN ARC LENGTH OF 159.25 FEET, A CHORD BEARING OF SOUTH 29°56'17" EAST, A CHORD LENGTH OF 159.12 FEET TO A POINT; THENCE A CURVE TO THE RIGHT, A RADIUS OF 1,410.24 FEET, AN ARC LENGTH OF 237.39 FEET, A CHORD BEARING OF SOUTH 21°35'10" EAST, A CHORD LENGTH OF 237.11 FEET TO A POINT; THENCE A CURVE TO THE RIGHT, A RADIUS OF 1,412.80 FEET, AN ARC LENGTH OF 95.19 FEET, A CHORD BEARING OF SOUTH 15°10'37" EAST, A CHORD LENGTH OF 95.17 FEET TO A POINT, THE COMMON CORNER OF WVPRINCE PROPERTIES LLC; THENCE WITH SAID COMMON LINE NORTH 53°12'16" EAST A DISTANCE OF 324.19 FEET TO A POINT; THENCE SOUTH 05°04'58" EAST A DISTANCE OF 406.22 FEET TO A POINT; THENCE SOUTH 82°04'14" WEST A DISTANCE OF 262.30 FEET TO A POINT IN THE CENTERLINE OF VERIDEA PARKWAY; THENCE WITH SAID LINE SOUTH 04°53'25" EAST A DISTANCE OF 109.42 FEET TO A POINT; THENCE A CURVE TO THE RIGHT, A RADIUS OF 253.36 FEET, AN ARC LENGTH OF 164.05 FEET, A CHORD BEARING OF SOUTH 13°00'27" WEST, A CHORD LENGTH OF 161.20 FEET TO AN IRON PIPE ON THE EASTERN RIGHT OF WAY OF VERIDEA PARKWAY; THENCE SOUTH 53°16'50" EAST A DISTANCE OF 31.10 FEET TO AN IRON PIPE ON THE EASTERN RIGHT OF WAY OF VERIDEA PARKWAY; THENCE SOUTH 53°16'50" EAST A DISTANCE OF 60.76 FEET TO A POINT; THENCE NORTH 71°42'44" EAST A DISTANCE OF 274.98 FEET TO A POINT; THENCE NORTH 71°42'44" EAST A DISTANCE OF 170.75 FEET TO AN IRON PIPE; THENCE NORTH 61°11'36" EAST A DISTANCE OF 171.72 FEET TO AN IRON PIPE; THENCE NORTH 67°24'08" EAST A DISTANCE OF 526.30 FEET TO AN IRON PIPE ON THE WESTERN LINE OF THE TRACT SHOWN ON PLAT BOOK 1985, PAGE 64; THENCE WITH SAID COMMON LINE SOUTH 00°33'48" WEST A DISTANCE OF 1,301.27 FEET TO AN IRON PIPE; THENCE SOUTH 88°56'50" EAST A DISTANCE OF 1,524.31 FEET TO AN IRON PIPE; THENCE NORTH 42°37'27" EAST A DISTANCE OF 84.50 FEET TO A POINT; THENCE SOUTH 87°51'02" EAST A DISTANCE OF 208.48 FEET TO AN IRON PIPE; THENCE NORTH 00°58'38" EAST A DISTANCE OF 3,283.09 FEET TO AN IRON PIPE; THENCE SOUTH 89°46'05" WEST A DISTANCE OF 25.90 FEET TO A POINT, THE SOUTHEAST CORNER OF TRACT C-2, AS SHOWN ON BOOK OF MAPS 1989, PAGE 59; THENCE WITH SAID COMMON LINE NORTH 01°31'12" EAST A DISTANCE OF 572.91 FEET TO A POINT; THENCE NORTH 01°28'31" EAST A DISTANCE OF 119.73 FEET TO A POINT; THENCE NORTH 01°30'44" EAST A DISTANCE OF 41.12 FEET TO THE POINT OF BEGINNING; CONTAINING 37,222,488 SQUARE FEET OR 854.51 ACRES.

THIS INCLUDES THE RECOMBINED PARCELS SHOWN ON B.M. 2024, PG. 630 RECORDED IN THE WAKE COUNTY REGISTER OF DEEDS.

LESS AND EXCEPT THE FOLLOWING

BEING ALL OF THE JENKS, MILBY, AND POE TRACTS SHOWN ON BOOK OF MAPS 2014, PAGE 1223 OF THE WAKE COUNTY REGISTRY. MORE PARTICULARLY DESCRIBED AS:

COMMENCING AT A POINT ON THE SOUTHERN RIGHT OF WAY OF U.S. HIGHWAY 1, SAID POINT BEING THE NORTHWEST CORNER OF TRACT I-A, AS SHOWN ON BOOK OF MAPS 2003, PAGE 398 OF THE WAKE COUNTY REGISTRY, THE POINT OF COMMENCEMENT; THENCE SOUTH 47°02'19" WEST A DISTANCE OF 6,484.14 FEET TO AN IRON PIPE, THE NORTHEAST CORNER OF THE MILBY TRACT, AS SHOWN ON BOOK OF MAPS 2014, PAGE 1223, THE POINT OF BEGINNING; THENCE WITH THE EASTERN LINE OF THE MILBY

TRACT SOUTH 02°19'40" WEST A DISTANCE OF 199.14 FEET TO A POINT, THE NORTHWEST CORNER OF THE 1.710 ACRE TRACT SHOWN ON BOOK OF MAPS 2002, PAGE 109; THENCE WITH SAID COMMON LINE SOUTH 02°19'40" WEST A DISTANCE OF 64.13 FEET TO AN IRON PIPE; THENCE SOUTH 02°13'53" WEST A DISTANCE OF 189.40 FEET TO AN IRON PIPE; THENCE SOUTH 02°17'48" WEST A DISTANCE OF 67.39 FEET TO AN IRON PIPE; THENCE SOUTH 65°19'45" WEST A DISTANCE OF 538.99 FEET TO A POINT; THENCE SOUTH 01°27'55" WEST A DISTANCE OF 148.65 FEET TO A POINT; THENCE SOUTH 77°54'05" WEST A DISTANCE OF 389.22 FEET TO AN IRON PIPE; THENCE NORTH 00°01'19" WEST A DISTANCE OF 967.73 FEET TO A POINT; THENCE NORTH 89°58'41" EAST A DISTANCE OF 616.26 FEET TO AN IRON PIPE; THENCE NORTH 89°58'41" EAST A DISTANCE OF 133.87 FEET TO AN IRON PIPE; THENCE NORTH 87°19'22" EAST A DISTANCE OF 145.34 FEET TO THE POINT OF BEGINNING; CONTAINING 668,038 SQUARE FEET OR 15.34 ACRES.

## SOUTH VILLAGE EAST

BEING A PORTION OF THE PROGRESS ENERGY, LYNX, AND REEVES TRACTS SHOWN ON BOOK OF MAPS 2007, PAGE 1132 OF THE WAKE COUNTY REGISTRY. MORE PARTICULARLY DESCRIBED AS:

BEGINNING AT AN EXISTING IRON PIPE ON THE EAST LINE OF TRACT A, AS SHOWN ON BOOK OF MAPS 1998, PAGE 782 OF THE WAKE COUNTY REGISTRY, BEING ALSO THE NORTHWEST CORNER OF TRACT 2, AS SHOWN ON BOOK OF MAPS 2016, PAGE 1428; THENCE WITH SAID TRACT A, NORTH 04°58'10" EAST A DISTANCE OF 362.56 FEET TO A POINT; THENCE SOUTH 89°45'44" WEST A DISTANCE OF 59.47 FEET TO A POINT ON THE EASTERN RIGHT OF WAY OF VERIDEA PARKWAY, AS DESCRIBED IN DEED BOOK 15539, PAGE 1885; THENCE WITH SAID RIGHT OF WAY NORTH 13°15'47" EAST A DISTANCE OF 53.04 FEET TO A CONCRETE MONUMENT; THENCE A CURVE TO THE LEFT, A RADIUS OF 1,700.00 FEET, AN ARC LENGTH OF 338.32 FEET, A CHORD BEARING OF NORTH 07°33'43" EAST, A CHORD LENGTH OF 337.77 FEET TO A CONCRETE MONUMENT; THENCE A CURVE TO THE LEFT, A RADIUS OF 1,900.00 FEET, AN ARC LENGTH OF 76.93 FEET, A CHORD BEARING OF NORTH 01°06'08" WEST, A CHORD LENGTH OF 76.92 FEET TO A CONCRETE MONUMENT; THENCE A CURVE TO THE LEFT, A RADIUS OF 1,900.00 FEET, AN ARC LENGTH OF 63.33 FEET, A CHORD BEARING OF NORTH 01°01'01" WEST, A CHORD LENGTH OF 63.33 FEET TO A CONCRETE MONUMENT; THENCE A CURVE TO THE LEFT, A RADIUS OF 1,900.00 FEET, AN ARC LENGTH OF 31.67 FEET, A CHORD BEARING OF NORTH 02°26'58" WEST, A CHORD LENGTH OF 31.67 FEET TO A CONCRETE MONUMENT; THENCE NORTH 02°54'23" EAST A DISTANCE OF 203.97 FEET TO A CONCRETE MONUMENT ON THE SOUTHERN RIGHT OF WAY OF NORTH CAROLINA HIGHWAY 540; THENCE WITH SAID RIGHT OF WAY NORTH 48°17'55" EAST A DISTANCE OF 64.35 FEET TO A POINT; THENCE NORTH 48°17'55" EAST A DISTANCE OF 3.48 FEET TO A CONCRETE MONUMENT; THENCE SOUTH 76°02'09" EAST A DISTANCE OF 316.69 FEET TO A CONCRETE MONUMENT; THENCE SOUTH 77°42'22" EAST A DISTANCE OF 224.13 FEET TO A CONCRETE MONUMENT; THENCE NORTH 74°21'52" EAST A DISTANCE OF 186.60 FEET TO A CONCRETE MONUMENT; THENCE NORTH 46°45'41" EAST A DISTANCE OF 297.04 FEET TO A CONCRETE MONUMENT; THENCE NORTH 47°49'13" EAST A DISTANCE OF 182.30 FEET TO A CONCRETE MONUMENT; THENCE NORTH 64°40'03" EAST A DISTANCE OF 179.28 FEET TO A POINT, THE NORTHWEST CORNER OF GREENWAY WASTE SOLUTIONS AS DESCRIBED IN DEED BOOK 9099, PAGE 1039; THENCE WITH SAID COMMON LINE SOUTH 06°34'16" EAST A DISTANCE OF 760.63 FEET TO AN IRON PIPE; THENCE SOUTH 79°02'49" EAST A DISTANCE OF 220.90 FEET TO A POINT; THENCE SOUTH 75°06'07" EAST A DISTANCE OF 218.69 FEET TO AN IRON PIPE; THENCE SOUTH 70°32'46" EAST A DISTANCE OF 183.78 FEET TO AN IRON PIPE; THENCE SOUTH 55°38'24" EAST A DISTANCE OF 327.19 FEET TO A POINT IN WHITE OAK CREEK; THENCE WITH SAID CREEK SOUTH 07°50'07" EAST A DISTANCE OF 31.18 FEET TO A POINT; THENCE SOUTH 24°25'22" EAST A DISTANCE OF 138.13 FEET TO A POINT, THE COMMON CORNER OF WAKE COUNTY FELTONVILLE LANDFILL, AS SHOWN ON BOOK OF MAPS 2016, PAGE 1427; THENCE WITH SAID CREEK, THE COMMON LINE, SOUTH 04°34'33" WEST A DISTANCE OF 63.94 FEET TO A POINT; THENCE SOUTH 18°23'05" WEST A DISTANCE OF 94.25 FEET TO A POINT; THENCE SOUTH 00°53'17" WEST A DISTANCE OF 65.12 FEET TO A POINT; THENCE SOUTH 00°53'17" WEST A DISTANCE OF 39.71 FEET TO A POINT; THENCE SOUTH 12°47'10" WEST A DISTANCE OF 52.16 FEET TO A POINT; THENCE SOUTH 58°49'54" WEST A DISTANCE OF 25.88 FEET TO A POINT; THENCE SOUTH 13°29'07" WEST A DISTANCE OF 65.67 FEET TO A POINT, THE NORTHEAST CORNER OF TRACT 2 AS SHOWN ON BOOK OF MAPS 2016, PAGE 1428; THENCE WITH SAID COMMON LINE NORTH 82°38'31"

WEST A DISTANCE OF 877.31 FEET TO AN IRON PIPE; THENCE NORTH  $88^{\circ}36'32''$  WEST A DISTANCE OF 1370.01 FEET TO THE POINT OF BEGINNING; CONTAINING 2,282,096 SQUARE FEET OR 52.39 ACRES.

TRACTS 8-3, 10-6, 10-7B SOUTH

BEGINNING AT A CONCRETE MONUMENT ON THE WESTERN RIGHT OF WAY OF VERIDEA PARKWAY, SAID MONUMENT BEING ON THE NORTHERN LINE OF THE TRACT SHOWN ON BOOK OF MAPS 1986, PAGE 1865, THE POINT OF BEGINNING; THENCE NORTH 71°59'15" WEST A DISTANCE OF 337.68 FEET TO AN IRON PIPE; THENCE NORTH 86°29'50" WEST A DISTANCE OF 829.07 FEET TO AN IRON PIPE, THE NORTHEAST CORNER OF TRACT 3 AS SHOWN ON BOOK OF MAPS 2022, PAGE 3; THENCE WITH SAID COMMON LINE SOUTH 87°43'51" WEST A DISTANCE OF 2,965.86 FEET TO AN IRON PIPE ON THE EASTERN LINE OF TRACT F, AS SHOWN ON BOOK OF MAPS 1974, PAGE 228; THENCE WITH SAID COMMON LINE NORTH 00°24'36" EAST A DISTANCE OF 1,161.04 FEET TO A POINT ON THE SOUTHERN LINE OF TRACT B, AS SHOWN ON BOOK OF MAPS 1979, PAGE 686; THENCE WITH SAID COMMON LINE SOUTH 78°13'36" EAST A DISTANCE OF 73.65 FEET TO A POINT; THENCE SOUTH 70°13'09" EAST A DISTANCE OF 113.59 FEET TO A POINT; THENCE SOUTH 71°57'54" EAST A DISTANCE OF 121.73 FEET TO A POINT; THENCE SOUTH 70°58'13" EAST A DISTANCE OF 114.09 FEET TO A POINT; THENCE SOUTH 72°14'11" EAST A DISTANCE OF 343.92 FEET TO A POINT; THENCE SOUTH 74°17'38" EAST A DISTANCE OF 315.81 FEET TO A POINT; THENCE SOUTH 65°13'58" EAST A DISTANCE OF 138.23 FEET TO A POINT; THENCE SOUTH 65°10'08" EAST A DISTANCE OF 10.00 FEET TO A POINT IN BIG BRANCH; THENCE WITH SAID BRANCH NORTH 19°49'58" EAST A DISTANCE OF 52.46 FEET TO A POINT; THENCE NORTH 27°34'56" EAST A DISTANCE OF 25.74 FEET TO A POINT; THENCE NORTH 62°53'48" EAST A DISTANCE OF 26.76 FEET TO A POINT; THENCE NORTH 29°01'04" WEST A DISTANCE OF 21.84 FEET TO A POINT; THENCE NORTH 05°59'14" WEST A DISTANCE OF 34.25 FEET TO A POINT; THENCE NORTH 49°53'01" EAST A DISTANCE OF 15.65 FEET TO A POINT; THENCE NORTH 35°50'22" EAST A DISTANCE OF 26.00 FEET TO A POINT; THENCE NORTH 57°56'55" WEST A DISTANCE OF 27.74 FEET TO A POINT; THENCE SOUTH 77°56'49" WEST A DISTANCE OF 70.86 FEET TO A POINT; THENCE NORTH 69°25'39" WEST A DISTANCE OF 55.42 FEET TO A POINT; THENCE NORTH 16°13'12" WEST A DISTANCE OF 54.07 FEET TO A POINT; THENCE NORTH 47°24'29" EAST A DISTANCE OF 30.81 FEET TO A POINT; THENCE SOUTH 76°52'37" EAST A DISTANCE OF 46.52 FEET TO A POINT; THENCE NORTH 23°54'47" EAST A DISTANCE OF 15.13 FEET TO A POINT; THENCE NORTH 10°53'04" EAST A DISTANCE OF 79.33 FEET TO A POINT; THENCE NORTH 70°48'08" WEST A DISTANCE OF 21.80 FEET TO A POINT; THENCE NORTH 13°57'57" WEST A DISTANCE OF 44.13 FEET TO A POINT; THENCE NORTH 54°45'55" WEST A DISTANCE OF 48.38 FEET TO A POINT; THENCE SOUTH 57°21'14" WEST A DISTANCE OF 58.90 FEET TO A POINT; THENCE SOUTH 44°33'39" WEST A DISTANCE OF 46.68 FEET TO A POINT; THENCE NORTH 46°24'21" WEST A DISTANCE OF 39.79 FEET TO A POINT; THENCE NORTH 72°29'35" WEST A DISTANCE OF 36.60 FEET TO A POINT; THENCE SOUTH 47°15'35" WEST A DISTANCE OF 18.92 FEET TO A POINT; THENCE NORTH 74°35'59" WEST A DISTANCE OF 21.22 FEET TO A POINT; THENCE NORTH 28°54'22" WEST A DISTANCE OF 20.74 FEET TO A POINT; THENCE NORTH 42°54'07" WEST A DISTANCE OF 46.75 FEET TO A POINT; THENCE NORTH 06°55'02" EAST A DISTANCE OF 26.65 FEET TO A POINT; THENCE NORTH 88°27'17" EAST A DISTANCE OF 37.67 FEET TO A POINT; THENCE NORTH 27°00'55" EAST A DISTANCE OF 19.39 FEET TO A POINT; THENCE NORTH 01°16'06" EAST A DISTANCE OF 31.60 FEET TO A POINT; THENCE NORTH 45°55'37" EAST A DISTANCE OF 50.02 FEET TO A POINT; THENCE NORTH 01°23'54" EAST A DISTANCE OF 14.01 FEET TO A POINT; THENCE NORTH 65°17'04" WEST A DISTANCE OF 42.02 FEET TO A POINT; THENCE NORTH 01°21'12" EAST A DISTANCE OF 32.19 FEET TO A POINT; THENCE NORTH 46°19'10" WEST A DISTANCE OF 51.21 FEET TO A POINT; THENCE NORTH 06°48'02" EAST A DISTANCE OF 35.97 FEET TO A POINT; THENCE NORTH 69°34'03" EAST A DISTANCE OF 41.13 FEET TO A POINT; THENCE NORTH 39°27'36" EAST A DISTANCE OF 39.13 FEET TO A POINT; THENCE NORTH 15°04'34" WEST A DISTANCE OF 20.63 FEET TO

A POINT; THENCE NORTH 51°45'25" WEST A DISTANCE OF 25.88 FEET TO A POINT; THENCE NORTH 30°03'26" EAST A DISTANCE OF 27.95 FEET TO A POINT; THENCE SOUTH 60°17'18" EAST A DISTANCE OF 30.79 FEET TO A POINT; THENCE SOUTH 36°34'38" EAST A DISTANCE OF 34.28 FEET TO A POINT; THENCE SOUTH 78°45'43" EAST A DISTANCE OF 52.43 FEET TO A POINT; THENCE NORTH 41°36'19" EAST A DISTANCE OF 15.36 FEET TO A POINT; THENCE NORTH 04°43'43" EAST A DISTANCE OF 44.44 FEET TO A POINT; THENCE NORTH 30°37'30" EAST A DISTANCE OF 51.77 FEET TO A POINT; THENCE NORTH 05°00'41" EAST A DISTANCE OF 35.48 FEET TO A POINT; THENCE SOUTH 62°04'45" WEST A DISTANCE OF 33.82 FEET TO A POINT; THENCE NORTH 44°58'03" WEST A DISTANCE OF 39.84 FEET TO A POINT; THENCE NORTH 44°37'02" EAST A DISTANCE OF 21.58 FEET TO A POINT; THENCE NORTH 53°05'19" EAST A DISTANCE OF 60.88 FEET TO A POINT; THENCE NORTH 61°15'57" WEST A DISTANCE OF 39.17 FEET TO A POINT; THENCE NORTH 50°49'25" WEST A DISTANCE OF 23.78 FEET TO A POINT; THENCE NORTH 10°03'59" WEST A DISTANCE OF 28.54 FEET TO A POINT; THENCE NORTH 38°48'29" EAST A DISTANCE OF 55.95 FEET TO A POINT; THENCE NORTH 43°08'07" WEST A DISTANCE OF 60.59 FEET TO A POINT; THENCE NORTH 42°28'11" EAST A DISTANCE OF 31.74 FEET TO A POINT; THENCE NORTH 70°54'18" WEST A DISTANCE OF 69.18 FEET TO A POINT; THENCE NORTH 86°35'18" WEST A DISTANCE OF 111.94 FEET TO A POINT; THENCE NORTH 47°58'54" WEST A DISTANCE OF 68.58 FEET TO A POINT; THENCE NORTH 30°52'49" EAST A DISTANCE OF 32.56 FEET TO A POINT; THENCE NORTH 21°24'56" WEST A DISTANCE OF 54.07 FEET TO A POINT; THENCE NORTH 55°25'47" EAST A DISTANCE OF 39.27 FEET TO A POINT; THENCE NORTH 03°25'23" WEST A DISTANCE OF 46.46 FEET TO A POINT; THENCE NORTH 31°42'04" EAST A DISTANCE OF 54.96 FEET TO A POINT; THENCE NORTH 18°30'38" EAST A DISTANCE OF 44.10 FEET TO A POINT; THENCE NORTH 01°10'29" WEST A DISTANCE OF 65.77 FEET TO A POINT; THENCE NORTH 22°17'56" WEST A DISTANCE OF 29.93 FEET TO A POINT; THENCE NORTH 19°15'09" EAST A DISTANCE OF 2.52 FEET TO A POINT ON THE SOUTH LINE OF ROBERT BEREMAN; THENCE WITH SAID COMMON LINE NORTH 87°19'40" EAST A DISTANCE OF 837.86 FEET TO A POINT ON THE SOUTHERN RIGHT OF WAY OF NORTH CAROLINA HIGHWAY 540; THENCE WITH SAID RIGHT OF WAY SOUTH 48°51'19" EAST A DISTANCE OF 616.60 FEET TO AN IRON PIPE; THENCE NORTH 44°43'56" EAST A DISTANCE OF 25.00 FEET TO AN IRON PIPE; THENCE SOUTH 50°09'33" EAST A DISTANCE OF 205.32 FEET TO AN IRON PIPE; THENCE SOUTH 39°54'37" EAST A DISTANCE OF 212.61 FEET TO AN IRON PIPE; THENCE A CURVE TO THE LEFT A RADIUS OF 4,375.00 FEET, AN ARC LENGTH OF 311.61 FEET, A CHORD BEARING OF SOUTH 45°34'54" EAST, A CHORD LENGTH OF 311.54 FEET TO AN IRON PIPE; THENCE A CURVE TO THE LEFT, A RADIUS OF 4,375.00 FEET, AN ARC LENGTH OF 1,106.45 FEET, A CHORD BEARING OF SOUTH 54°52'03" EAST, A CHORD LENGTH OF 1,103.50 FEET TO A POINT; THENCE A CURVE TO THE LEFT, A RADIUS OF 4,375.00 FEET, AN ARC LENGTH OF 456.34 FEET, A CHORD BEARING OF SOUTH 65°10'37" EAST, A CHORD LENGTH OF 456.13 FEET TO A CONCRETE MONUMENT; THENCE SOUTH 49°00'55" EAST A DISTANCE OF 133.17 FEET TO A POINT ON THE WESTERN RIGHT OF WAY OF VERIDEA PARKWAY; THENCE WITH SAID RIGHT OF WAY, A CURVE TO THE LEFT, A RADIUS OF 1,680.00 FEET, AN ARC LENGTH OF 355.38 FEET, A CHORD BEARING OF SOUTH 05°50'57" WEST, A CHORD LENGTH OF 354.72 FEET TO A POINT; THENCE WITH A CURVE TO THE LEFT A RADIUS OF 1,680.00 FEET, AN ARC LENGTH OF 205.93 FEET, A CHORD BEARING OF SOUTH 03°43'21" EAST, A CHORD LENGTH OF 205.80 FEET TO THE POINT OF BEGINNING; CONTAINING 5,629,803 SQUARE FEET OR 129.24 ACRES.

TRACT 9-3-3

COMMENCING AT A POINT ON THE SOUTHERN RIGHT OF WAY OF U.S. HIGHWAY 1, SAID POINT BEING THE NORTHWEST CORNER OF TRACT I-A, AS SHOWN ON BOOK OF MAPS 2003, PAGE 398 OF THE WAKE COUNTY REGISTRY, THE POINT OF COMMENCEMENT; THENCE SOUTH  $51^{\circ}39'05''$  EAST A DISTANCE OF 5331.68 FEET TO AN IRON PIPE ON THE WESTERN RIGHT OF WAY OF NORTH CAROLINA HIGHWAY 55, SAID PIPE BEING THE NORTHEAST CORNER OF CROWN BUILDERS AND DEVELOPERS OF NC, LLC, THE POINT OF BEGINNING; THENCE WITH SAID COMMON LINE SOUTH  $89^{\circ}40'44''$  WEST A DISTANCE OF 123.48 FEET TO AN IRON PIPE; THENCE NORTH  $02^{\circ}18'46''$  WEST A DISTANCE OF 50.01 FEET TO AN IRON PIPE ON THE SOUTH LINE OF DEXTER MONK; THENCE WITH SAID COMMON LINE NORTH  $89^{\circ}43'19''$  EAST A DISTANCE OF 123.46 FEET TO AN IRON PIPE ON THE WESTERN RIGHT OF WAY OF SAID HIGHWAY 55; THENCE WITH SAID RIGHT OF WAY, A CURVE TO THE RIGHT A RADIUS OF 5,633.75 FEET, AN ARC LENGTH OF 49.92 FEET, A CHORD BEARING OF SOUTH  $02^{\circ}20'20''$  EAST, A CHORD LENGTH OF 49.92 FEET TO THE POINT OF BEGINNING; CONTAINING 6,168 SQUARE FEET OR 0.14 ACRES.

TRACT 12

BEING A PORTION OF TRACT 8 AS SHOWN ON BOOK OF MAPS 1978, PAGE 731 OF THE WAKE COUNTY REGISTRY. MORE PARTICULARLY DESCRIBED AS:

BEGINNING AT AN IRON PIPE, THE SOUTHWEST CORNER OF TRACT 1 AS SHOWN ON BOOK OF MAPS 2015, PAGE 14 OF THE WAKE COUNTY REGISTRY; THENCE WITH SAID COMMON LINE NORTH 89°09'31" EAST A DISTANCE OF 343.45 FEET TO AN IRON PIPE ON THE NORTHERN RIGHT OF WAY OF US HIGHWAY 1; THENCE WITH SAID RIGHT OF WAY SOUTH 61°02'59" WEST A DISTANCE OF 67.94 FEET TO AN IRON PIPE; THENCE SOUTH 58°43'55" WEST A DISTANCE OF 105.62 FEET TO AN IRON PIPE; THENCE SOUTH 58°47'35" WEST A DISTANCE OF 224.31 FEET TO AN IRON PIPE, THE SOUTHEAST CORNER OF TRACT 1 AS SHOWN ON BOOK OF MAPS 2016, PAGE 344; THENCE WITH SAID COMMON LINE NORTH 00°31'47" WEST A DISTANCE OF 198.89 FEET TO THE POINT OF BEGINNING; CONTAINING 33,722 SQUARE FEET OR 0.77 ACRES.