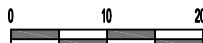


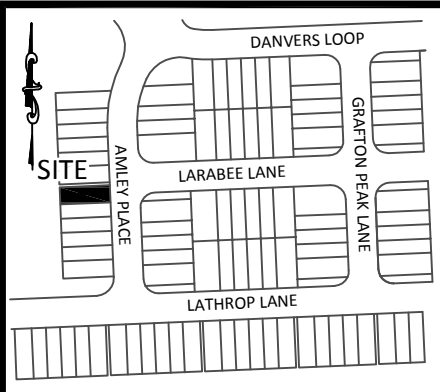
Exhibit A

LOT INFORMATION:

PIN: 0742685061
 TOTAL LOT AREA = 0.057 AC = 2,465 SF
 HOUSE = 928 SF
 DRIVEWAY = 335 SF
 SIDEWALK = 116 SF
 PORCH = 22 SF
 COVERED PORCH = 76 SF
 AC PAD = 9 SF
 PROPOSED IMPERVIOUS = 1,486 SF
 PERCENT IMPERVIOUS = 60.3 %



SCALE:
 1" = 20 ft.



VICINITY MAP

(Not to Scale)

NOTE:

THIS MAP MAY NOT BE A CERTIFIED SURVEY AND HAS NOT BEEN REVIEWED BY LOCAL GOVERNMENT AGENCY FOR COMPLIANCE WITH ANY APPLICABLE LAND DEVELOPMENT REGULATIONS AND HAS NOT BEEN REVIEWED FOR COMPLIANCE WITH RECORDING REQUIREMENTS FOR PLATS

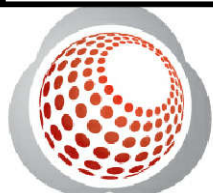
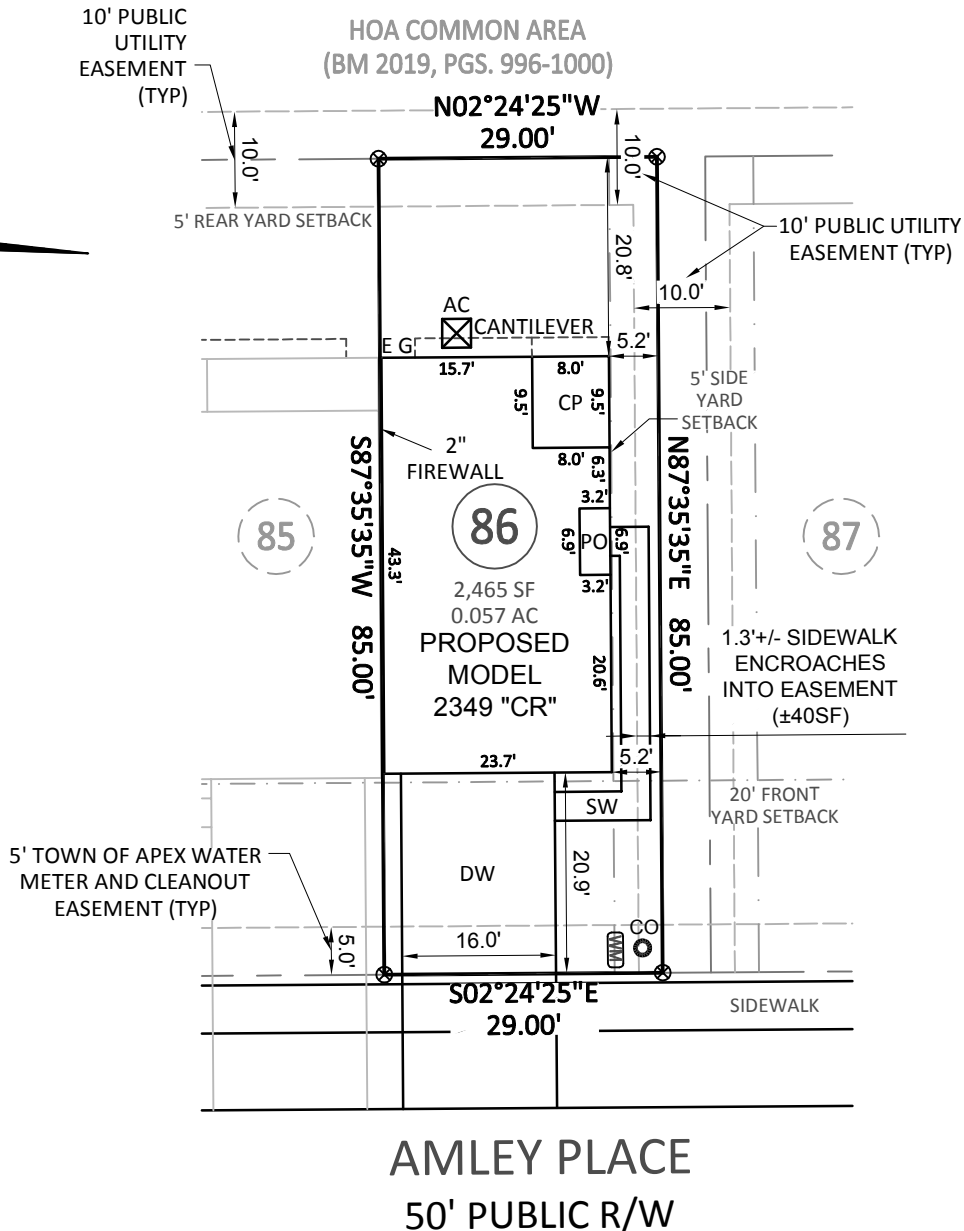
MINIMUM BUILDING SETBACKS:

FROM BUFFER OR RCA:	10'
FRONT YARD:	5'
SIDE YARD (END UNITS):	5'
REAR YARD:	5'
PUBLIC R/W:	18' (WHERE NO SIDEWALK IS PRESENT)
PUBLIC R/W TO GARAGE:	20' (WHERE SIDEWALK IS PRESENT)
BUILDING SIDE TO SIDE:	10'
BUILDING SIDE TO REAR:	30'
BUILDING REAR TO REAR:	40'



LEGEND

- PO = PORCH
- S = CONCRETE STOOP
- SW = SIDEWALK
- DW = CONC DRIVEWAY
- CP = COVERED PORCH
- P = CONCRETE PATIO
- ⊗ = COMPUTED POINT
- = IRON PIPE FOUND(EIP)
- = IRON PIPE SET(IPS)
- = DRILL HOLE FOUND
- WM = WATER METER
- CO = CLEAN OUT
- AC = AIR CONDITIONER
- ⊙ = CABLE BOX
- ⊙ = SEWER MANOLE
- ⊙ = TS HANDHOLE
- TP = TELEPHONE PEDESTAL
- CB = CATCH BASIN
- ⊙ = LIGHT POLE
- G = GAS METER
- E = ELECTRIC METER
- ⊙ = FIRE HYDRANT (FH)
- YI = YARD INLET
- ⊙ = WATER VALVE (WV)
- EB = ELECTRIC BOX
- ⊙ = GAS VALVE
- FP = FIREPLACE
- ST = STORAGE
- ⊙ = WATER VALVE



Bateman Civil Survey Company, PC
 Engineers • Surveyors • Planners
 2524 Reliance Avenue, Apex, NC 27539
 (919) 577-1080
 NCBELS C 2378

PRELIMINARY PLOT PLAN
 EXCLUSIVELY FOR: TRI POINTE HOMES
TOWNES AT NORTH SALEM, PHASE 2B - LOT 86
 820 AMLEY PLACE, APEX, NC
 WHITE OAK TOWNSHIP, WAKE COUNTY
DATE: 5/13/2020 DRAWN BY: MJA CHECKED BY: SPC

REFERENCE: BOOK 2020, PG 205 BCS# 200201 SCALE: 1" = 20'