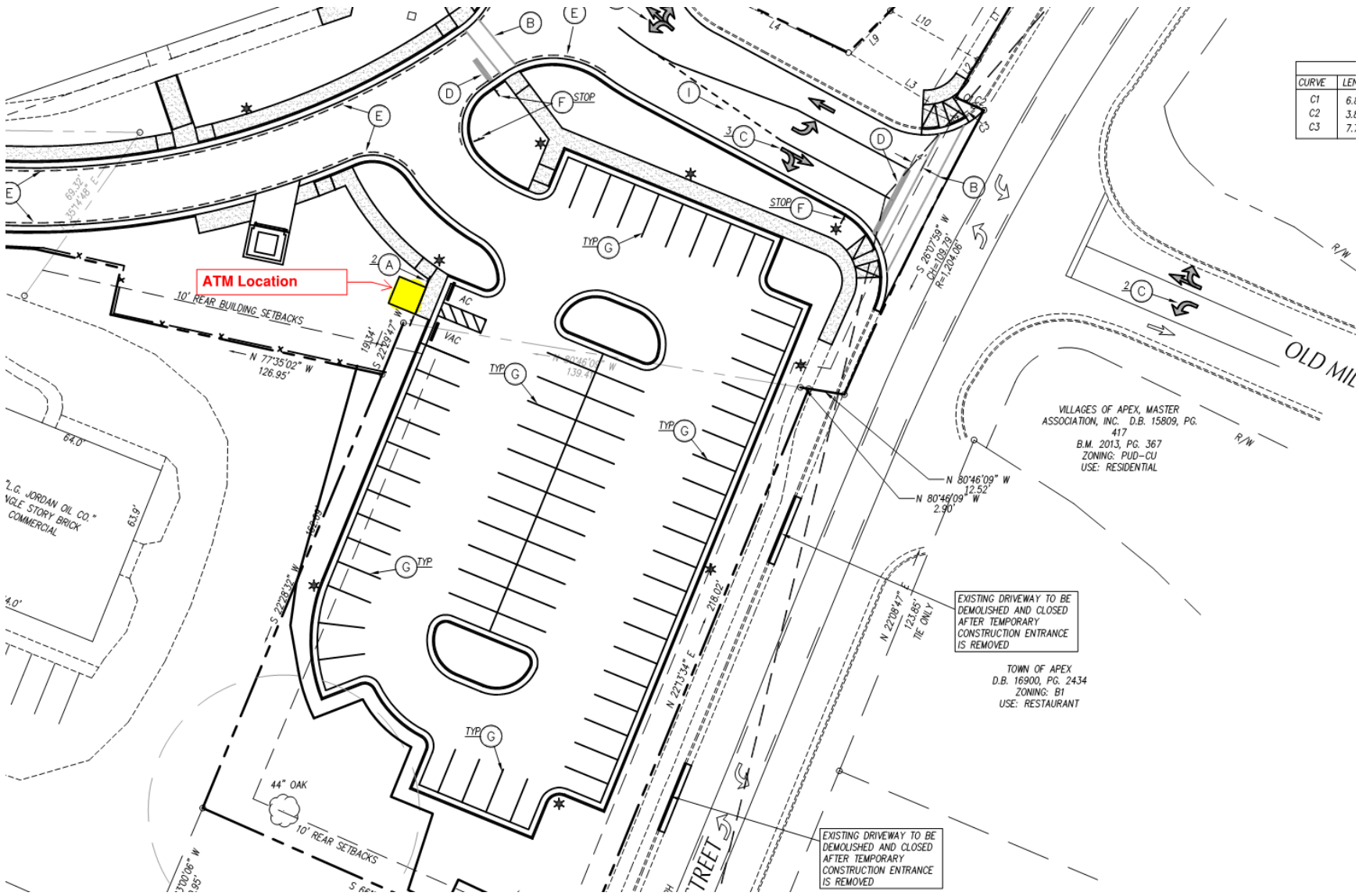


CURVE	LEN
C1	6.1
C2	3.1
C3	7.1



L.G. JORDAN OIL CO.  
VGL 5 STORY BRICK  
COMMERCIAL

VILLAGES OF APEX, MASTER  
ASSOCIATION, INC. D.B. 15809, PG.  
417  
B.M. 2013, PG. 367  
ZONING: PUD-CU  
USE: RESIDENTIAL

EXISTING DRIVEWAY TO BE  
DEMOLISHED AND CLOSED  
AFTER TEMPORARY  
CONSTRUCTION ENTRANCE  
IS REMOVED

TOWN OF APEX  
D.B. 16900, PG. 2434  
ZONING: B1  
USE: RESTAURANT

EXISTING DRIVEWAY TO BE  
DEMOLISHED AND CLOSED  
AFTER TEMPORARY  
CONSTRUCTION ENTRANCE  
IS REMOVED