

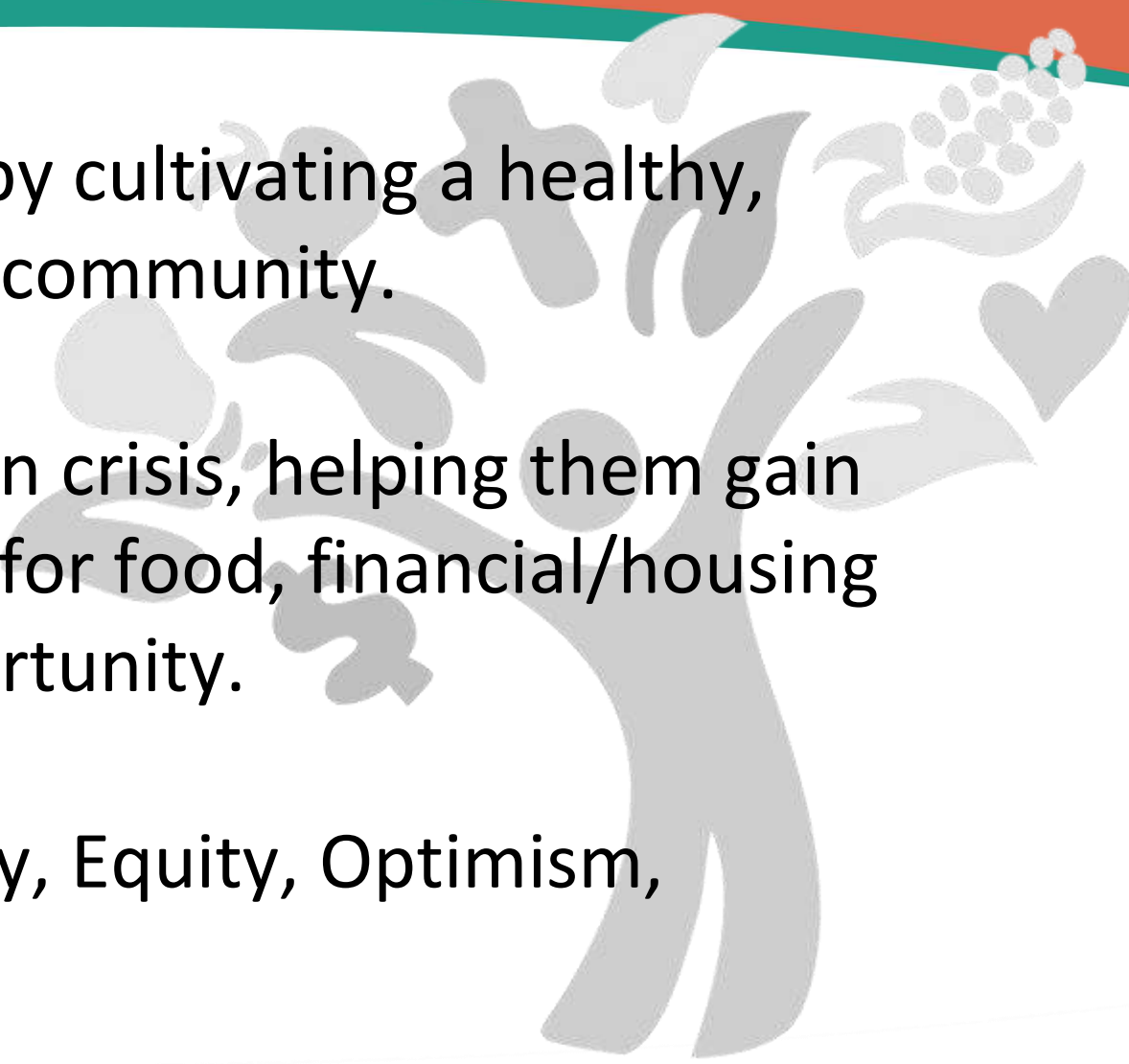


Western Wake

CRISIS MINISTRY

Building a brighter future for all by cultivating a healthy,
hunger-free and housing-stable community.

wwcm.org ~ 919-362-0657

A decorative background featuring a stylized tree with a heart-shaped leaf and a cluster of grapes. The tree is rendered in a light gray color. The background is framed by a teal and orange border at the top and a solid orange border at the bottom.

Vision: A brighter future for all by cultivating a healthy, hunger-free and housing-stable community.

Mission: Partnering with those in crisis, helping them gain stability through basic supports for food, financial/housing assistance, education, and opportunity.

Values: Compassion, Community, Equity, Optimism, Relationship, Vision, and Impact

Services



FOOD SECURITY

- Curbside Pickup & Open-Air Market – weekdays (M-Th)
- Saturday Distribution (monthly)
- Latinx/Hispanic Outreach
- Home Delivery (monthly)
- Emergency Food Support

HOUSING SECURITY

- Rental Assistance
- Utility Assistance Program
- Short-term Case Management
- Resource Assistance



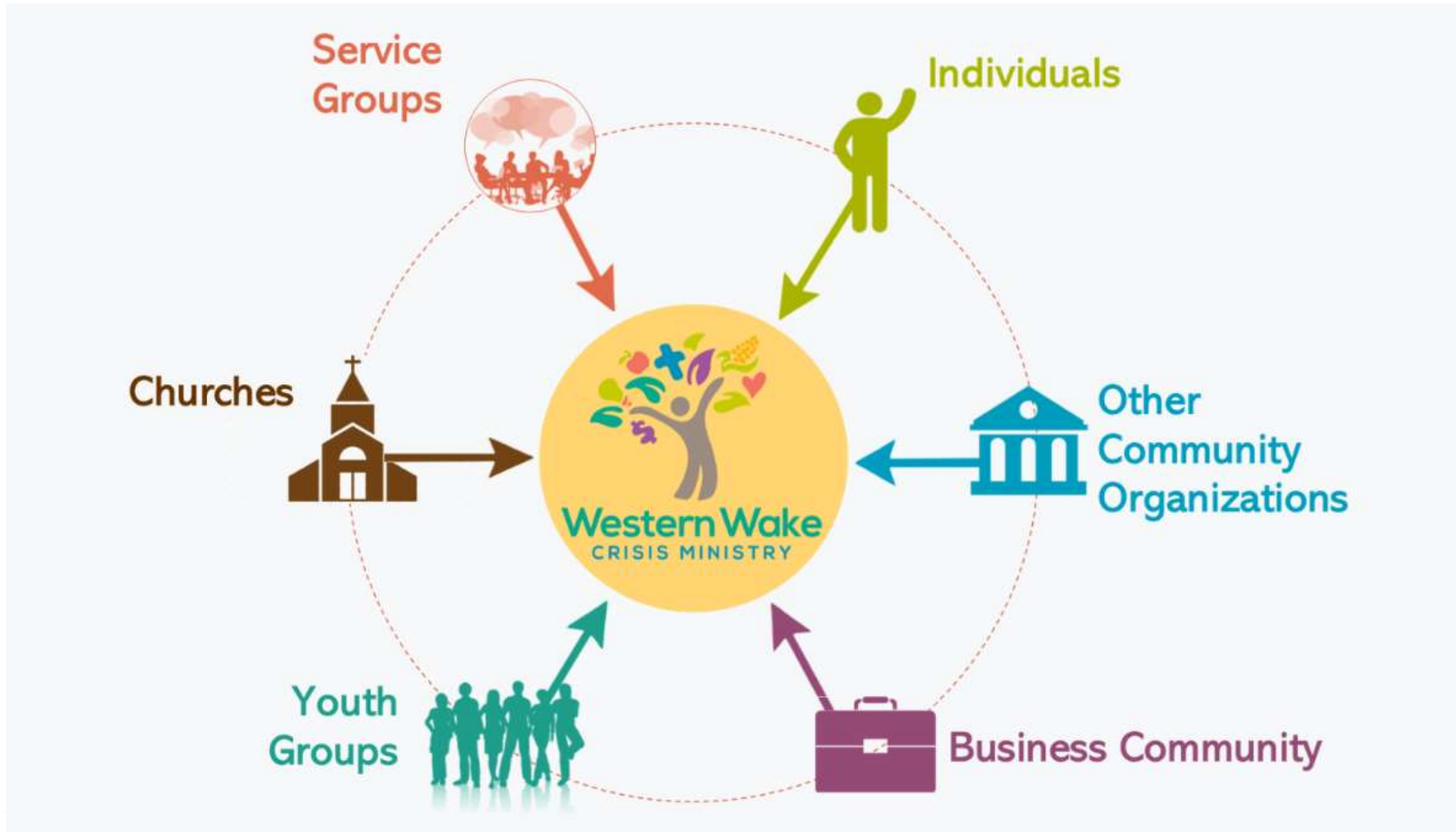
WWCM & Covid Response

- Curbside food distribution & home delivery
- Limited volunteers & staff in building
- Monthly meat & produce distribution to all Wake County
- Resource Assistance provided virtually or by appointment outside
- Collaboration with Emergency Meal Program, Local Agencies & Churches

Operational Snapshot



- Serve Approximately 400 families per month with food assistance
- Serve Approximately 55+ families per month with financial support (rent & utilities), Receives approximately 330 calls for screening
- Partnered with Town of Apex to assist customers with past due utility bills
- WWCM only has 5 employees, 2 of which are part-time
 - Approximately 100 regular volunteers
 - Interdependent relationships with volunteers
 - Numerous donors and partners that support the overall operations of WWCM including the Interfaith Food Network, Food bank of NC, Food Lion, United way, Apex Chamber of Commerce and Wake County.





What's Happening at WWCM

- Several food collection drives for Thanksgiving Meal-Goal is to serve 300 families
- Holidays and Beyond campaign to combat food security past the holidays
- Collaboration with Apex Police Department to support a family that actively fleeing domestic violence
- Hiring additional support staff to meet the needs of the community.
- Working directly with landlords, hotels, property managers to facilitate housing
- Hosting Coffee & Chat sessions, community tours and Lunch and Learns

What can Groups Do?



- Food and/or Fund Drives
- Distribute information about WWCM via newsletter, social media
- Volunteer
- Invite WWCM to speak or present at events

Where to Find Us

1600 Olive Chapel Road, Suite 408 (540 Flex), Apex, NC 27502

919-362-0657

WWCM.ORG



@westernwakecrisisministry



@westernwakecrisisministry



@wwcm2017

