

Chatham County

Annexation #726

751

Flying Hawk Rd

Two Pond Ln

Pinefield Rd

Hattie Rd

64

US 64 Hwy W

Lawson Ln

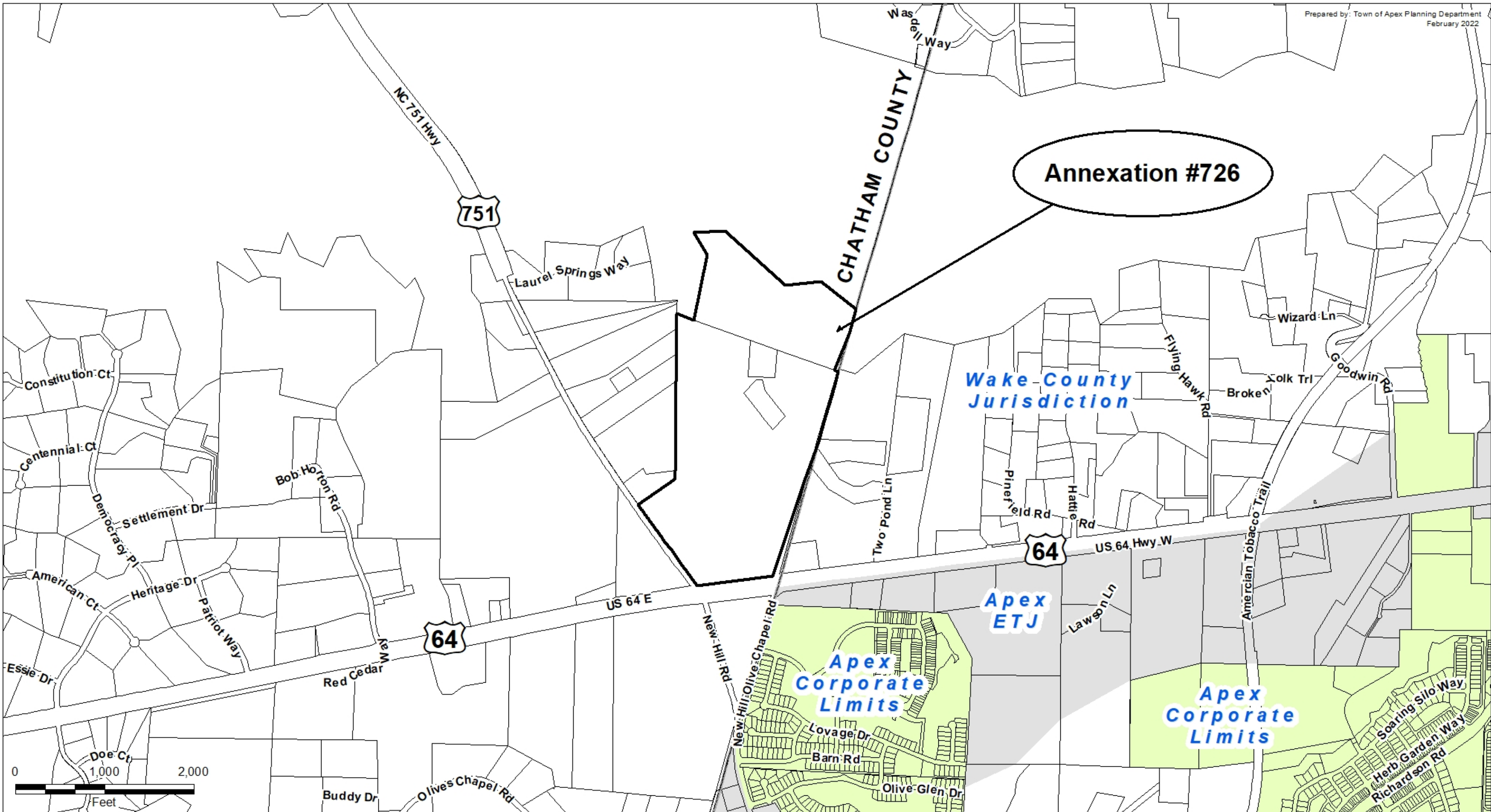
64

New Hill Rd

Deer Creek

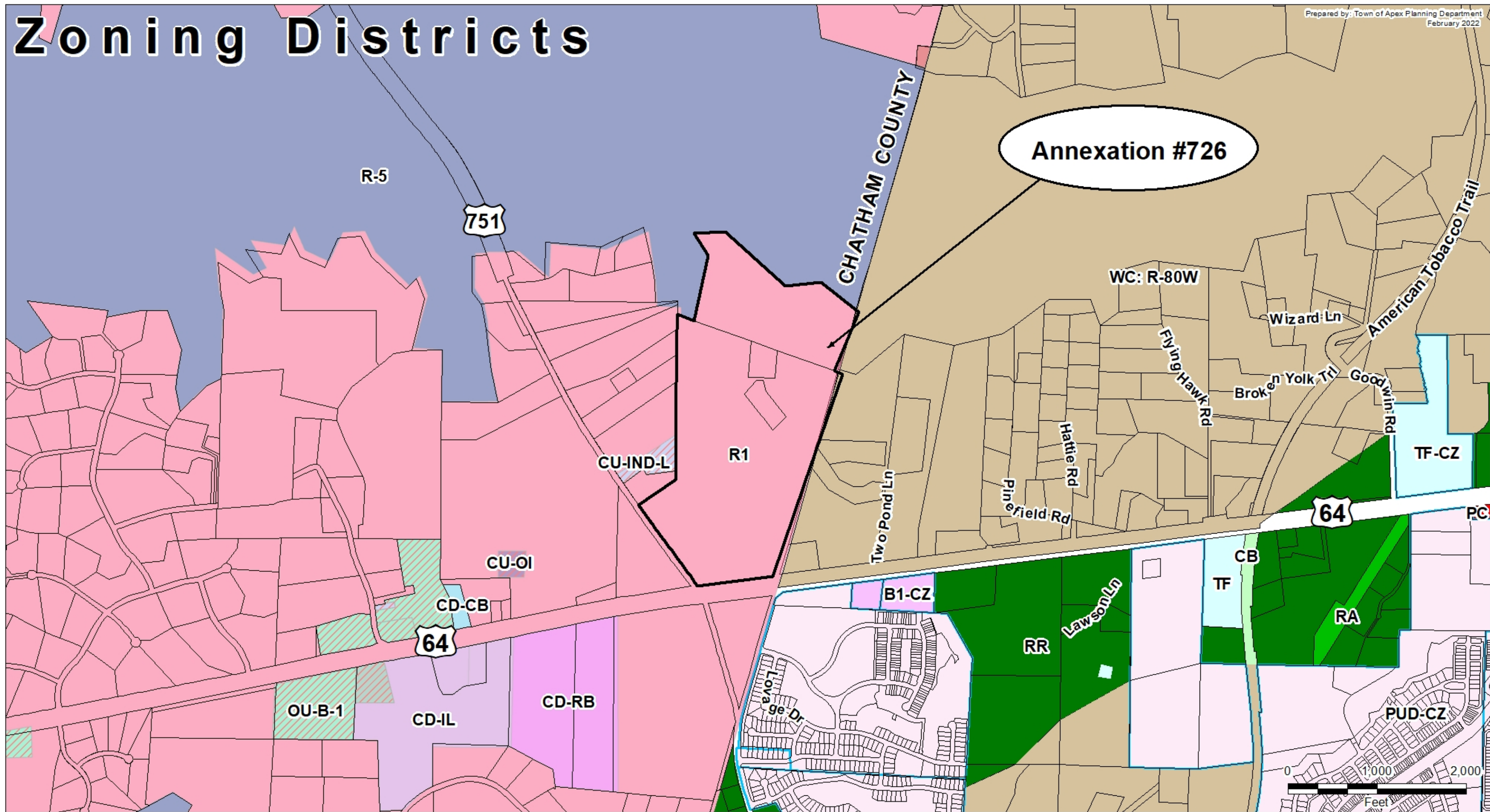
Smith Farm PUD

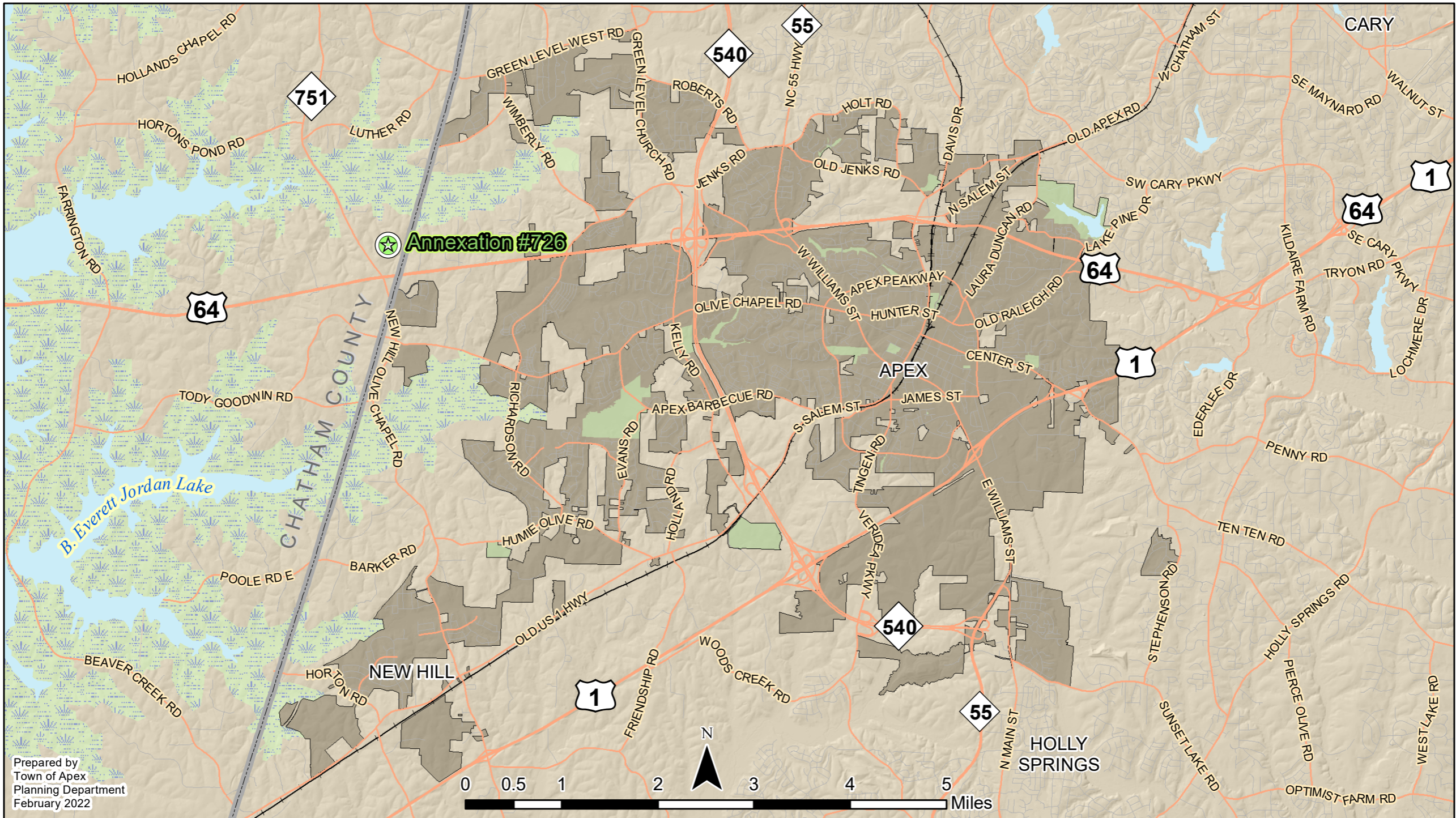




Zoning Districts

Prepared by: Town of Apex Planning Department
February 2022





Prepared by
 Town of Apex
 Planning Department
 February 2022