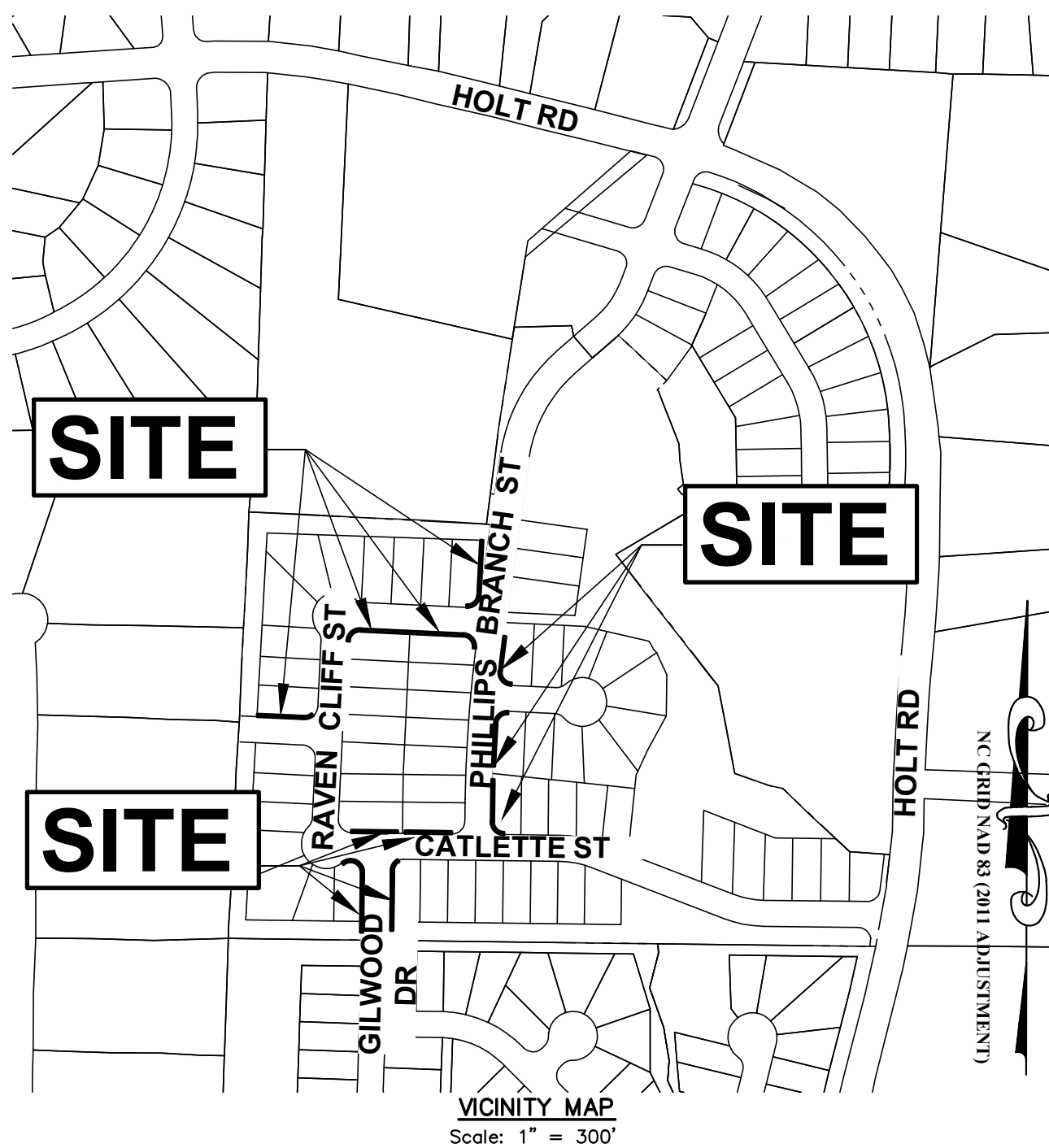
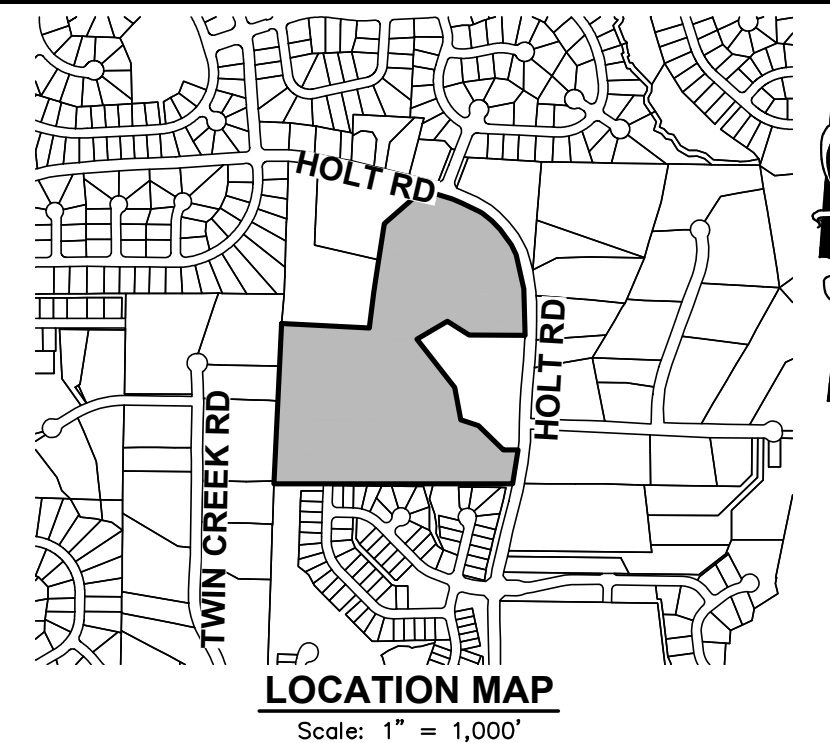
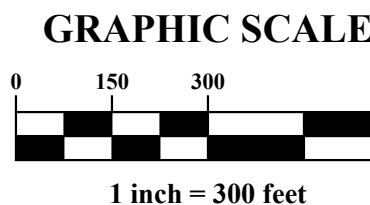


EASEMENT ABANDONMENT PLAT THE COURTYARDS ON HOLT FOR EPCON HOLT ROAD, LLC



VICINITY MAP
Scale: 1" = 300'



LOCATION MAP
Scale: 1" = 1,000'

LINE	DISTANCE	BEARING
L1	5.00'	N01°38'31"E
L2	105.40'	N02°56'21"E
L3	5.00'	S88°01'35"E
L4	107.70'	S02°56'21"W
L5	5.00'	N82°40'25"W
L6	102.97'	N87°14'05"W
L7	5.00'	S02°45'55"W
L8	102.97'	S87°14'05"E
L9	5.00'	N81°59'05"W
L10	5.00'	N02°45'59"E
L11	5.00'	S02°45'55"W
L12	5.00'	N87°47'33"W
L13	41.64'	S00°42'37"W
L14	5.00'	N88°22'38"W
L15	41.64'	N00°42'37"E
L16	5.00'	N00°42'35"E
L17	5.00'	N03°11'00"E
L18	90.68'	S87°14'05"E

LINE	DISTANCE	BEARING
L19	5.00'	S42°14'05"E
L20	90.72'	N87°14'05"W
L21	5.00'	N89°17'25"W
L22	114.51'	N00°42'37"E
L23	5.00'	N41°48'19"W
L24	114.51'	S00°42'37"W
L25	115.00'	N00°42'37"E
L26	5.00'	S30°13'33"E
L27	115.00'	S00°42'37"W
L28	5.00'	N89°17'25"W
L29	90.00'	N89°17'25"W
L30	5.00'	N00°42'35"E
L31	90.00'	S89°17'25"E
L32	5.00'	S00°42'35"W
L33	5.00'	N00°42'35"E
L34	89.33'	N89°17'25"W
L35	4.00'	S00°42'35"W
L36	20.00'	S89°17'25"E

LINE	DISTANCE	BEARING
L37	1.00'	N00°42'35"E
L38	69.33'	S89°17'25"E
L39	95.00'	N87°14'05"W
L40	5.00'	N87°14'05"W
L41	95.00'	S87°14'05"E

NOTE:
1. Purpose of this plat is to abandon portions of existing 5-foot Town of Apex Public Utility Easements as shown on Book of Maps 2021, Page 1884 on Lots 10, 11, 20, 25, 34, 41, 42, 50, 56, 57, & 63.

SITE DATA:
Zoning District: PUD-CZ
Case #: 18CZ29
Annexation Number: #680
HIST. PIN: 0743236975 #680
HIST. PIN: 0743237810 #680
HIST. PIN: 0743234100 #680
HIST. PIN: 0743225750 #680
HIST. PIN: 0743229697 #680

Area of Parent Tracts:
HIST. PIN: 0743236975 0.090 Ac.
HIST. PIN: 0743237810 0.433 Ac.
HIST. PIN: 0743234100 16.559 Ac.
HIST. PIN: 0743225750 1.781 Ac.
HIST. PIN: 0743229697 1.780 Ac.
Total: 20.643 Ac.

Setback Requirements:
Front - 20'
Side - 5'
Corner Side - 10'
Rear - 10'

CURVE TABLE					
NO.	DELTA	RADIUS	LENGTH	CHORD BEARING	CHORD DIST.
C1	089°49'35"	20.00'	31.36'	N47°51'08"E	28.24'
C2	084°45'01"	25.00'	36.98'	S50°23'25"W	33.70'
C3	094°33'39"	20.00'	33.01'	N39°57'15"W	29.39'
C4	094°33'39"	25.00'	41.26'	S39°57'15"E	36.73'
C5	090°00'00"	20.00'	31.42'	S47°45'55"W	28.28'
C6	090°00'00"	25.00'	39.27'	N47°45'55"E	35.36'
C7	093°41'06"	25.00'	40.88'	S40°23'32"E	36.47'
C8	001°33'53"	2475.00'	67.59'	S07°13'58"W	67.59'
C9	001°33'53"	2470.00'	67.46'	N07°13'58"E	67.45'
C10	093°41'06"	20.00'	32.70'	N40°23'32"W	29.18'
C11	088°39'22"	20.00'	30.95'	S48°26'15"W	27.95'
C12	001°54'07"	2470.00'	81.99'	S03°09'30"W	81.99'
C13	001°54'07"	2475.00'	82.16'	N03°09'30"E	82.15'
C14	088°39'22"	25.00'	38.68'	N48°26'15"E	34.94'
C15	090°00'02"	25.00'	39.27'	S44°17'24"E	35.36'
C16	000°54'45"	2475.00'	39.42'	S01°10'00"W	39.42'
C17	000°54'45"	2470.00'	39.34'	N01°10'00"E	39.34'
C18	090°00'02"	20.00'	31.42'	N44°17'24"W	28.28'
C19	045°00'00"	20.00'	15.71'	N70°15'55"E	15.31'
C20	045°00'00"	25.00'	19.63'	S70°15'55"W	19.13'
C21	132°30'56"	20.00'	46.26'	N65°32'51"W	36.61'
C22	132°30'56"	25.00'	57.82'	S65°32'51"E	45.77'
C23	059°03'50"	25.00'	25.77'	N30°14'32"E	24.65'
C24	059°03'50"	20.00'	20.62'	S30°14'32"W	19.72'

FIRM # C-2798
51 Kilmayne Drive
Suite 102
Cary, North Carolina 27511
ph 919.481.6290
fax 919.336.5127

ADVANCED
CIVIL DESIGN
ENGINEERS SURVEYORS

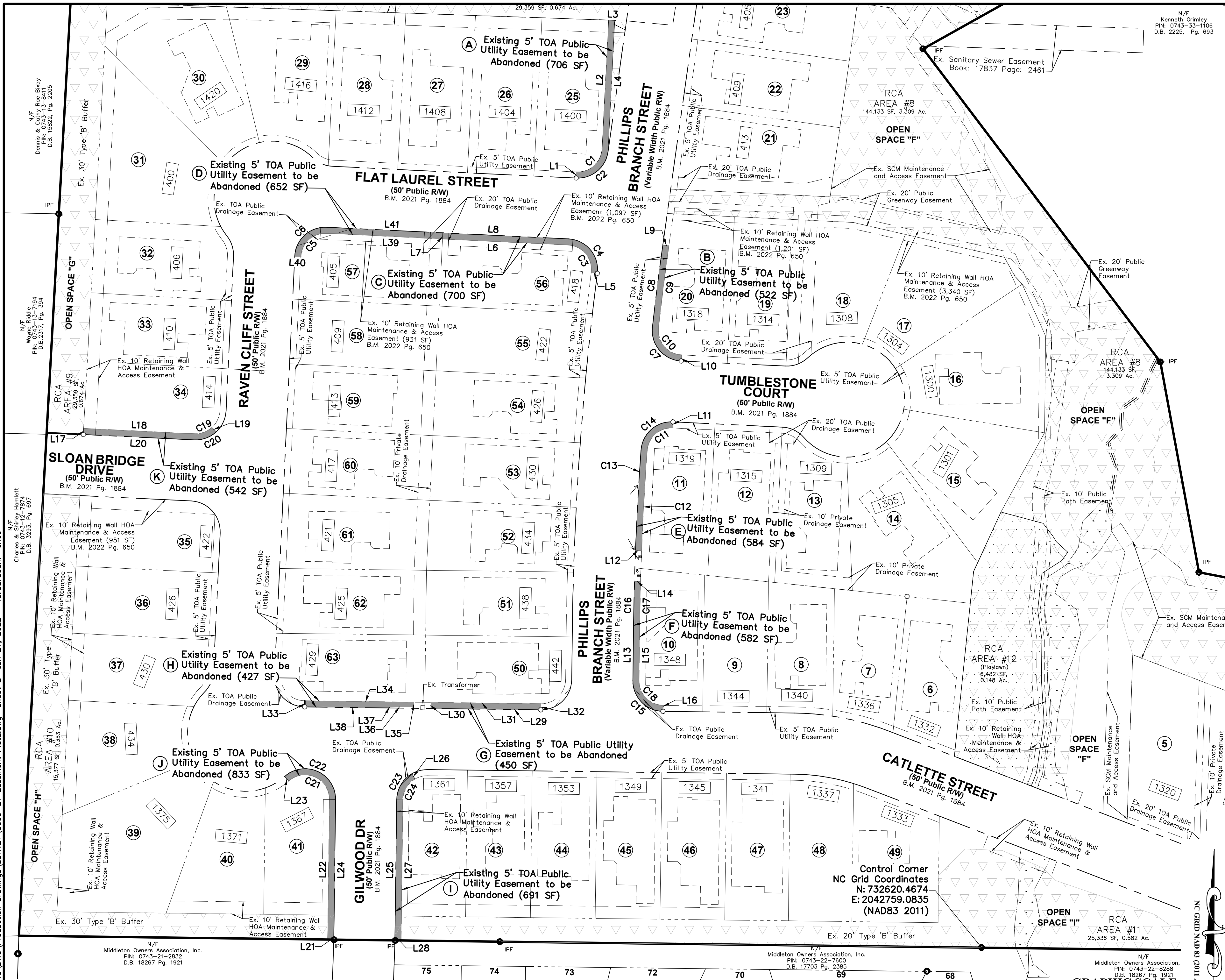
EASEMENT ABANDONMENT PLAT THE COURTYARDS ON HOLT FOR EPCON HOLT ROAD, LLC

Town of Apex White Oak Township Wake County, NC

Revisions:	2022-04-28 TOWN SUBMITTAL #1	Date: 06/27/2022
	2022-05-16 TOWN SUBMITTAL #2	
	2022-06-03 TOWN SUBMITTAL #3	
	2022-06-22 TOWN ATTORNEY COMMENTS	
	2022-06-27 TOWN ATTORNEY COMMENTS	
Drawn By:	SCH	Scale: AS NOTED
Project Number:	18-0009-27	
Sheet Number:	1 / 2	

O:\18-0009-27\NC\DWG\Production Drawings\SURVEY\0009-27 Easement Plat2.dwg Sheet 1 Jun 27, 2022 - 10:01:43am crice

O:\18-0009-27\NC\DWG\Production Drawings\SURVEY\0009-27 Easement Plat2.dwg Sheet 2 Jun 27, 2022 - 10:08:59am crice



N/F
Kenneth Grimley
PIN: 0743-33-1106
D.B. 2225, Pg. 693

FIRM # C-2798

51 Kilmayne Drive
Suite 102
Cary, North Carolina 27511
ph 919.481.6290
fax 919.336.5127

ADVANCED
CIVIL DESIGN
ENGINEERS SURVEYORS

EASEMENT ABANDONMENT PLAT
THE COURTYARDS ON HOLT
FOR
EPCON HOLT ROAD, LLC
Town of Apex White Oak Township Wake County, NC

Revisions:

2022-04-28	TOWN SUBMITTAL #1
2022-05-16	TOWN SUBMITTAL #2
2022-06-03	TOWN SUBMITTAL #3
2022-06-22	TOWN ATTORNEY COMMENTS
2022-06-27	TOWN ATTORNEY COMMENTS

Date: 06/27/2022

Drawn By: SCH Scale: 1" = 50'

Project Number: 18-0009-27

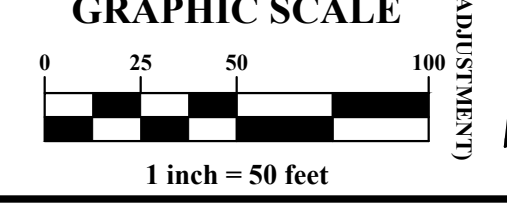
Sheet Number: **2 / 2**

LEGEND

Mag Nail Set	Iron Pipe Set	Existing Property Line	Existing Right of Way	Wetlands	Stream Buffer
Iron Pin Found	TOA Calculated Point	Existing Adjacent Property Line	Existing Easement	RCA	Ex. TOA Utility Easement To Be Abandoned
Iron Pipe Found	Town of Apex		Existing Building Foundation		

NOTE:

- Refer to Page 1 of this multi-page plat for notes, restrictions, and other requirements pertaining to this plat.
- See sheet 1 for line and curve tables.
- TOA = Town of Apex



N/F
Dennis & Cathy Rice Bixby
D.B. 1862Z, Pg. 2405

N/F
Wayne Riddle
PIN: 0743-12-7874
D.B. 2317, Pg. 394

N/F
Charles & Shirley Hamlett
PIN: 0743-12-7874
D.B. 3293, Pg. 697

N/F
Middleton Owners Association, Inc.
PIN: 0743-21-2832
D.B. 18267 Pg. 1921

N/F
Middleton Owners Association, Inc.
PIN: 0743-22-7600
D.B. 17702, Pg. 2385

N/F
Middleton Owners Association, Inc.
PIN: 0743-22-8288
D.B. 18267 Pg. 1921

N/F
Middleton Owners Association, Inc.
PIN: 0743-22-8288
D.B. 18267 Pg. 1921