

New Business #1

Transportation Capital Improvement Program
Updates and Requests

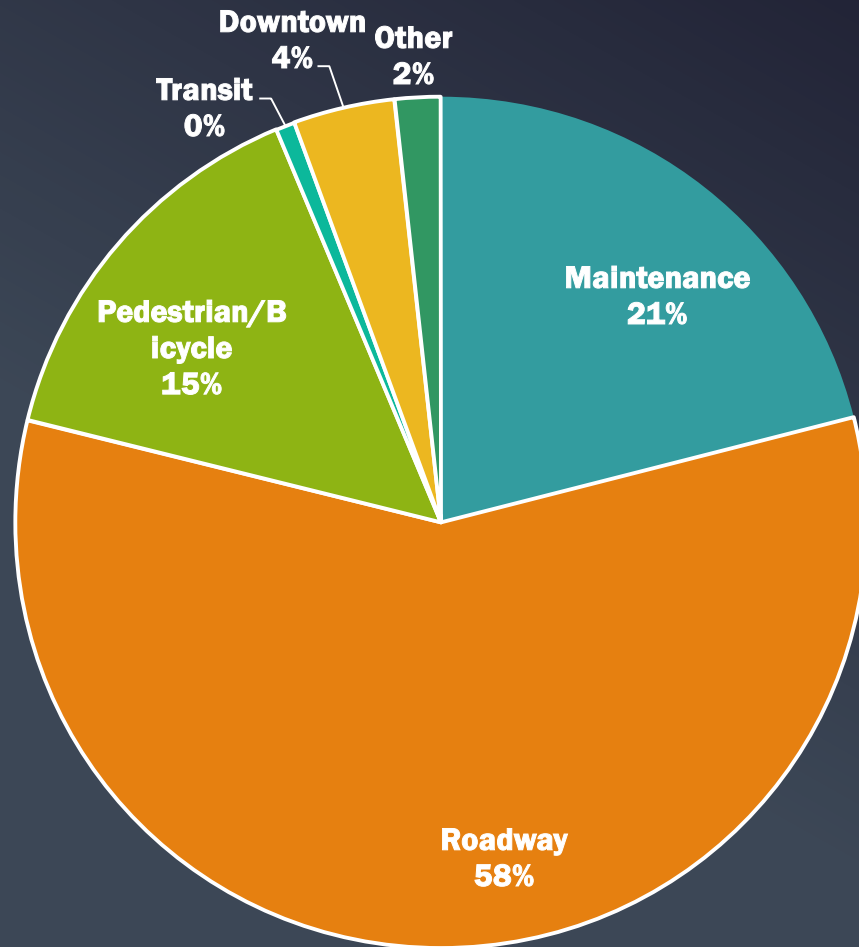




Agenda

- **Transportation Project CIP Requests >\$1 Million (excluding Downtown projects)**
 - **What is the project?**
 - **Why is it important?**
 - **What is the CIP request?**
 - **Phasing recommendations may coincide with LAPP and other funds**
- **Locally-Managed Projects Update**

Overview



	Project Name
PWT 1	Annual Pavement Management
PWT 3	Annual Miscellaneous Drainage Improvements
PWT 4	Pavement Management Backlog of Projects
PWT 7	GPS Emergency Vehicle Preemption
PWT 8	Wayfinding Signage Fabrication & Installation
PWT 10	Downtown - Alley Improvements
PWT 11	Downtown - Saunders Street Parking Lot Expansion
PWT 12	Downtown - Salem Street Streetscape & Resurfacing
PWT 9	ED - Burma Drive Extension Phase 1
PWT 13	ED - Burma Dr Phase 2/Pristine Water Dr to Lufkin Road
PWT 14	ED - Production Drive Extension to Jessie Drive
PWT 6	Ten Ten Rd at Jessie Dr Left Turn Lane Extension Cost Share
PWT 5	LAPP - Jessie Drive Phase 1 (no LAPP) & Phase 2 (LAPP)
PWT 19	LAPP - Davis Dr at Salem Church Rd Realignment
PWT 20	LAPP - Apex Peakway North Widening
PWT 21	WCPSS - Felton Grove HS Collector Street Cost Share
PWT 22	Lynch Street Extension
PWT 23	LAPP - Apex Peakway Southeast Connector
PWT 24	LAPP/CFA - GoApex Transit Program
PWT 15	LAPP - Tingen Road Pedestrian Bridge
PWT 16	LAPP - Center St RR Crossing Improvements & Sidewalk
PWT 17	LAPP - Chatham St RR Crossing Improvements & Sidewalk
PWT 18	LAPP - W Williams St Sidewalk
PWT 25	SRTS Baucom ES Phase 1
PWT 26	SRTS Thales Academy JH/HS Phase 1
PWT 27	LAPP - SRTS Baucom ES Phase 2
PWT 28	SRTS Baucom ES Phase 3 & Thales ES
PWT 29	SRTS Apex MS Phase 1
PWT 30	SRTS Apex MS Phase 2
PWT 2	Annual Miscellaneous Road and Sidewalk Improvements
PWT 31	NCDOT U-5301 US 64 Cost Share
PWT 32	NCDOT U-5825 Ten Ten Rd/Center St Cost Share
PWT 33	NCDOT U-2901 NC 55 Sidewalk Cost Share



Overview

- **Roadways**
 - Includes 4 high-priority projects from Advance Apex
 - Includes a package of projects for economic development
- **Transit**
 - Includes funding for one new local route or enhanced frequency/service
- **Bicycle and Pedestrian**
 - Does not address the highest priority (non-greenway) projects from Bike Apex
 - Follows policy recommendation to prioritize projects serving schools
 - Follows policy recommendation to leverage NCDOT projects
- **Other**
 - Addresses recommendation for Wayfinding from both the Downtown Plan and Bike Apex

Brief review:
Non-roadway projects

Wayfinding Signage Fabrication & Install

FY	\$
21-22	\$155K
22-23	\$190K
23-24	\$340K
24-25	\$330K
25-26	\$155K
TOTAL	\$1.2M

- ✓ Downtown Plan
- ✓ Bike Apex
- ✓ Peak Plan 2030
- ✓ Branding Study

APEX NORTH CAROLINA

SCALE: 3/4" = 1'-0"

15'-0"
13'-6"
12'-0"
10'-6"
9'-0"
7'-6"
6'-0"

Downtown Trailblazer
Downtown Vehicular Directional (Low Speed)
Vehicular Directional (High Speed)
Parking Directional
Parking Lot ID
Pedestrian Totem
Pedestrian Directional
Kiosk Double-Sided
Side View

Option for Digital Screen

Option for Digital Screen

merje

APEX, NC
July 30, 2020 | Schematic Design

Tingen Road Pedestrian Bridge

Phase	FY	\$
Study	22-23	\$150K
Design	23-24	\$500K
CON	24-25	\$3M
SUBTOTAL		\$3.7M
Potential grant		(\$1.5M)
TOTAL		\$2.2M

- ✓ Advance Apex
- ✓ Bike Apex
- ✓ Safe Routes to School



Center Street RR Crossing Improvement & Sidewalk

Phase	FY	\$
Design	22-23	\$100K
CON	23-24	\$700K
SUBTOTAL		\$800K
Potential grant		(\$490K)
TOTAL		\$310K

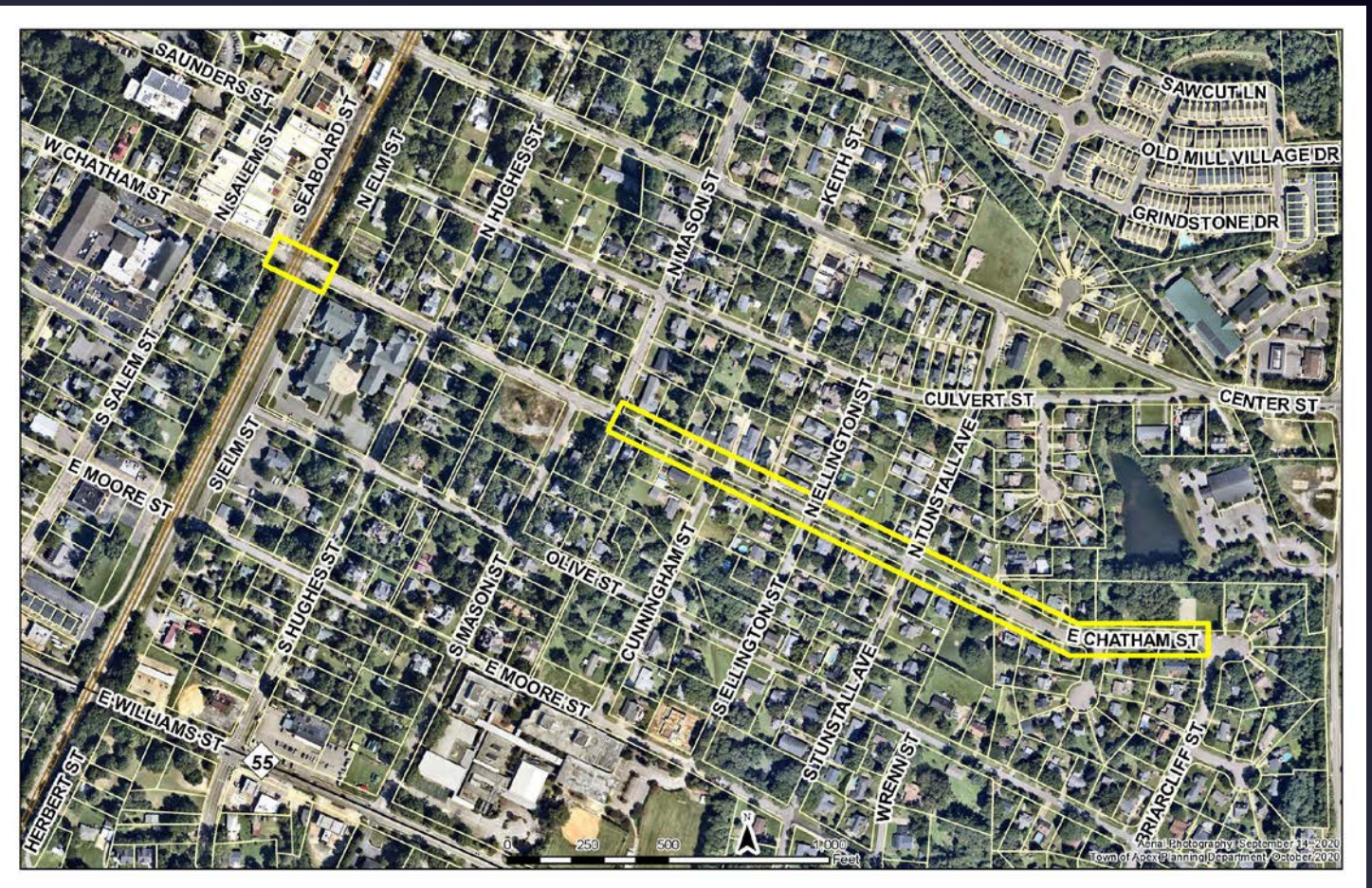
- ✓ Downtown Plan
- ✓ Advance Apex
- ✓ Quiet Zone application



Chatham Street RR Crossing Improvement & Sidewalk

Phase	FY	\$
Design	22-23	\$150K
ROW	23-24	\$40K
CON	23-24	\$1.1M
SUBTOTAL		\$1.3M
Potential grant		(\$760K)
TOTAL		\$515K

- ✓ Downtown Plan
- ✓ Advance Apex
- ✓ Safe Routes to School
- ✓ Quiet Zone application



NCDOT Projects Participation

Phase	FY	\$
U-5301 US 64	Future	\$2M
U-5825 Ten Ten Road	Future	\$2M
U-2901 NC 55	Future	\$2M
TOTAL		\$6M

Major projects

Pavement Management Backlog

FY	\$
21-22	\$1.9M
22-23	\$2M
23-24	\$2M
24-25	\$2.1M
25-26	\$2.2M
TOTAL	\$10.2M



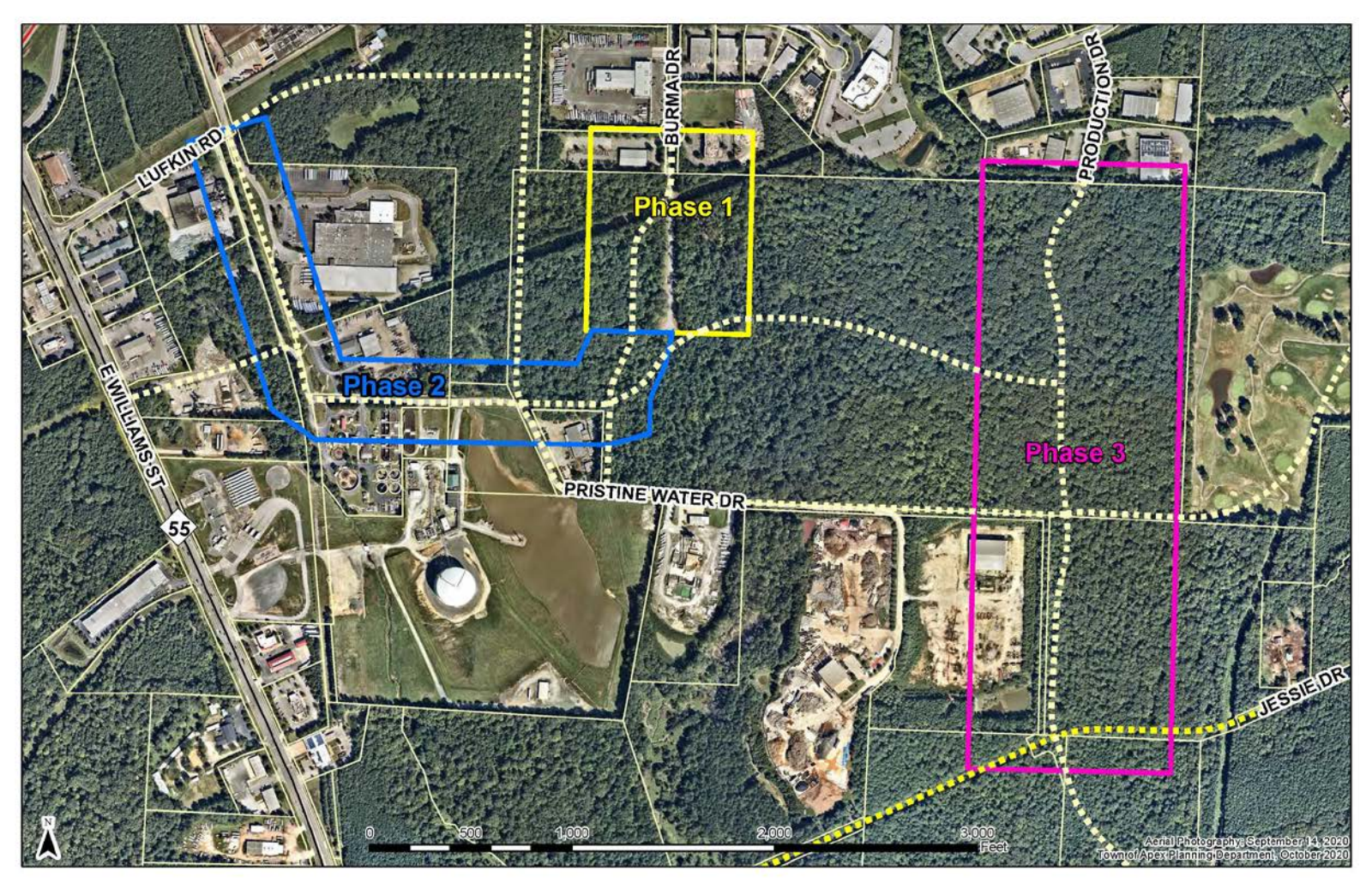
These are images of Apex streets.

Cash Corporate Center Projects

Phase	Project	FY	\$
CON	Burma Ext. to Project Delta	21-22	\$800K
Design	Burma Ext. to Pristine Water + Pristine Water to Lufkin	22-23	\$600K
CON	Burma Ext. to Pristine Water + Pristine Water to Lufkin	23-24	\$3M
Design	Production Ext. to Jessie	22-23	\$400K
CON	Production Ext. to Jessie	23-24	\$4M
TOTAL			\$8.8M

- ✓ Economic Development
- ✓ Production Drive – Advance Apex priority

Cash Corporate Center Projects

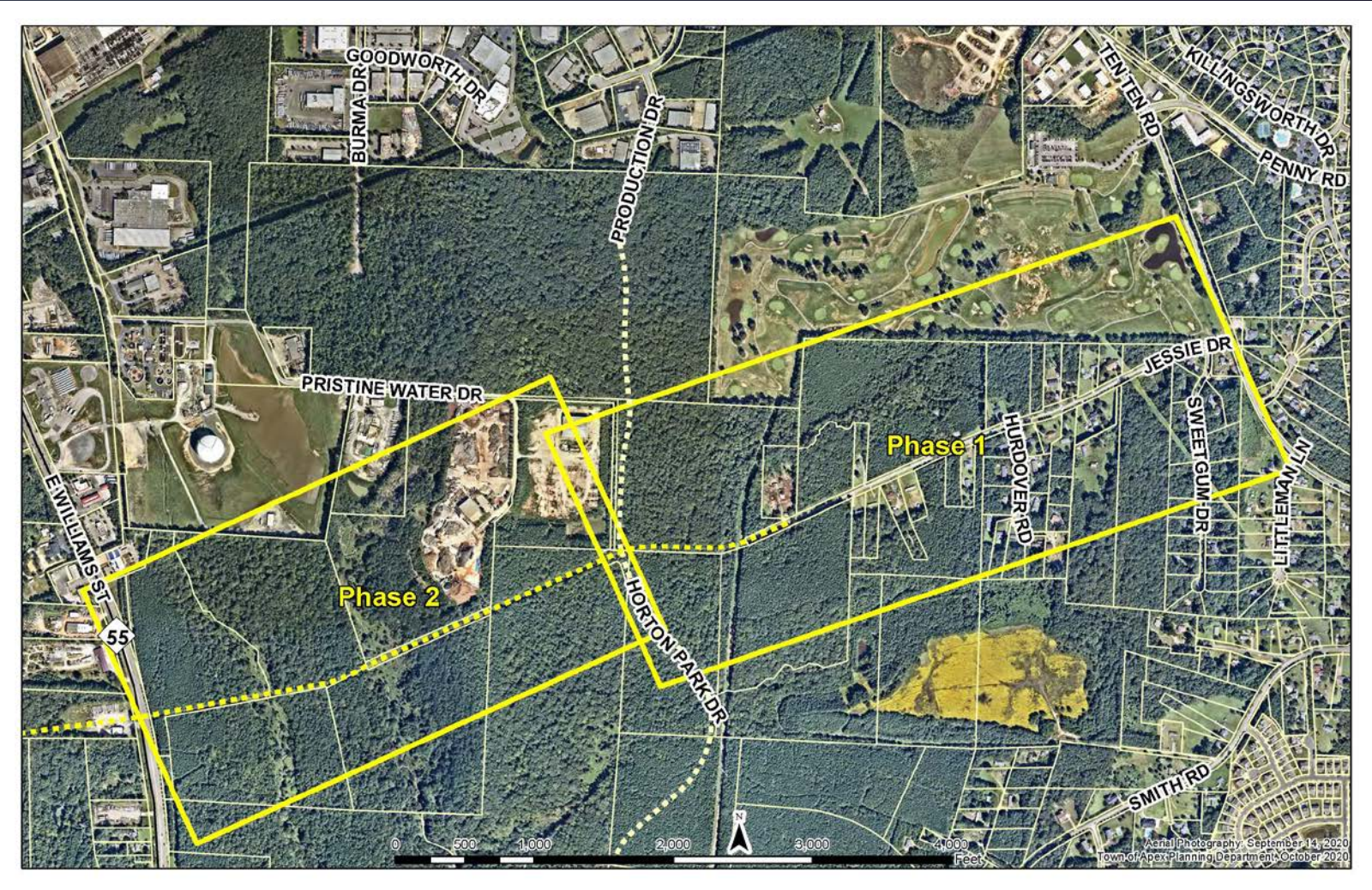


Jessie Drive Extension & Improvement

Phase	Project	FY	\$
Design	Ten Ten to Production	20-21	\$1M
CON	Ten Ten to Production	22-23	\$7.5M
Design	Production to NC 55	23-24	\$1.5M
CON	Production to NC 55	Future	\$12M
SUBTOTAL			\$22M
Potential grant (Production to NC 55)			(\$6M)
TOTAL			\$16M

- ✓ Advance Apex priority
- ✓ Economic development
- ✓ Freight route
- ✓ Alternate route to NC 55/US 1 for Ten Ten Road project

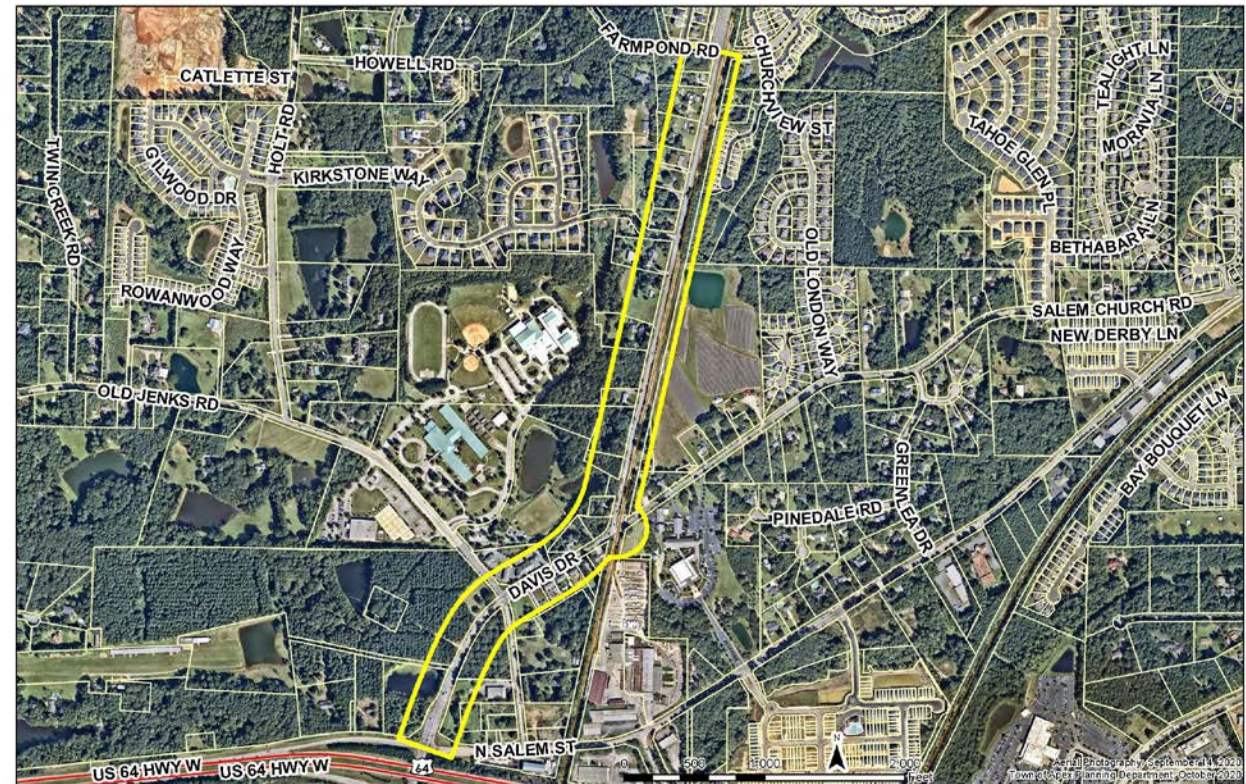
Jessie Drive Extension & Improvement



Davis Drive Realignment & Widening

Phase	FY	\$
Study	22-23	\$200K
Design	23-24	\$500K
ROW	24-25	\$2M
CON	25-26	\$5M
SUBTOTAL		\$7.7M
Potential grant		(\$3.5M)
TOTAL		\$4.2M

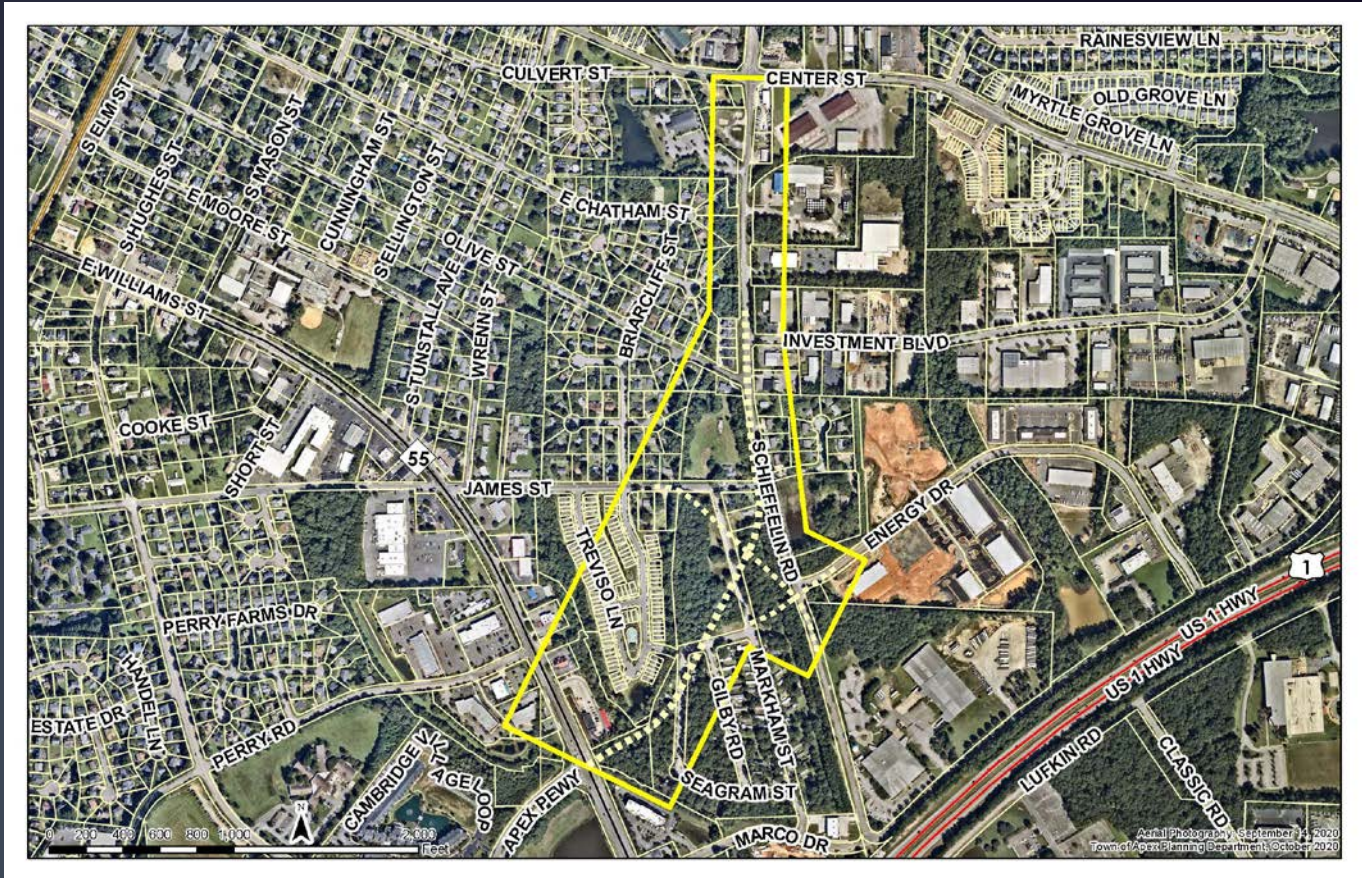
- ✓ Advance Apex priority
- ✓ At-grade railroad crossing improvement



Apex Peakway Southeast Connector

Phase	FY	\$
Design	24-25	\$1.7M
ROW	25-26	\$3.1M
CON	Future	\$14M
TOTAL		\$18.8M

- ✓ Advance Apex priority
- ✓ Provides improved eastern bypass route for NC 55 project



Apex Peakway North Widening

Phase	FY	\$
Design	23-24	\$350K
ROW & CON	24-25	\$5M*
SUBTOTAL		\$5.4M
Potential grant		(\$2.3M)
TOTAL		\$3.1M

✓ Advance Apex priority



Locally-administered projects update

Overview of active projects

- Award, Obligation, Reimbursement – what's the difference?

Project	Anticipated Request	Approximate Funding Commitment		Estimated Shortfall
		Other	Local	
U-5537 Lake Pine Drive	Obligated	\$1M	\$130K	\$2M
U-5530AC James to Downtown	Obligated	\$460K	\$220K	
C-5604AC Kelly & Apex BBQ Pedestrian	12/2020*	\$650K	\$280K	
U-5928 Apex Peakway SW	5/2021	\$2.5M	\$2.5M	\$20M
EB-5895 E Williams St Sidewalk	11/2020	\$480K	\$120K	
EB-6091 Beaver Creek Greenway	3/2021	\$1M	\$3.3M	

*Previously submitted construction authorization request and put on hold. Environmental consultation needed due to delay.

Overview of active projects

Project	Anticipated Request	Approximate Funding Commitment		Estimated Shortfall
		Other	Local	
EB-6019 Laura Duncan Pedestrian project	11/2020	\$390K	\$170K	
EB-6046 W Chatham Street sidewalk	6/2021	\$380K	\$570K	
TM-0026 GoApex Bus Stops	2/2021	\$620K	\$0	