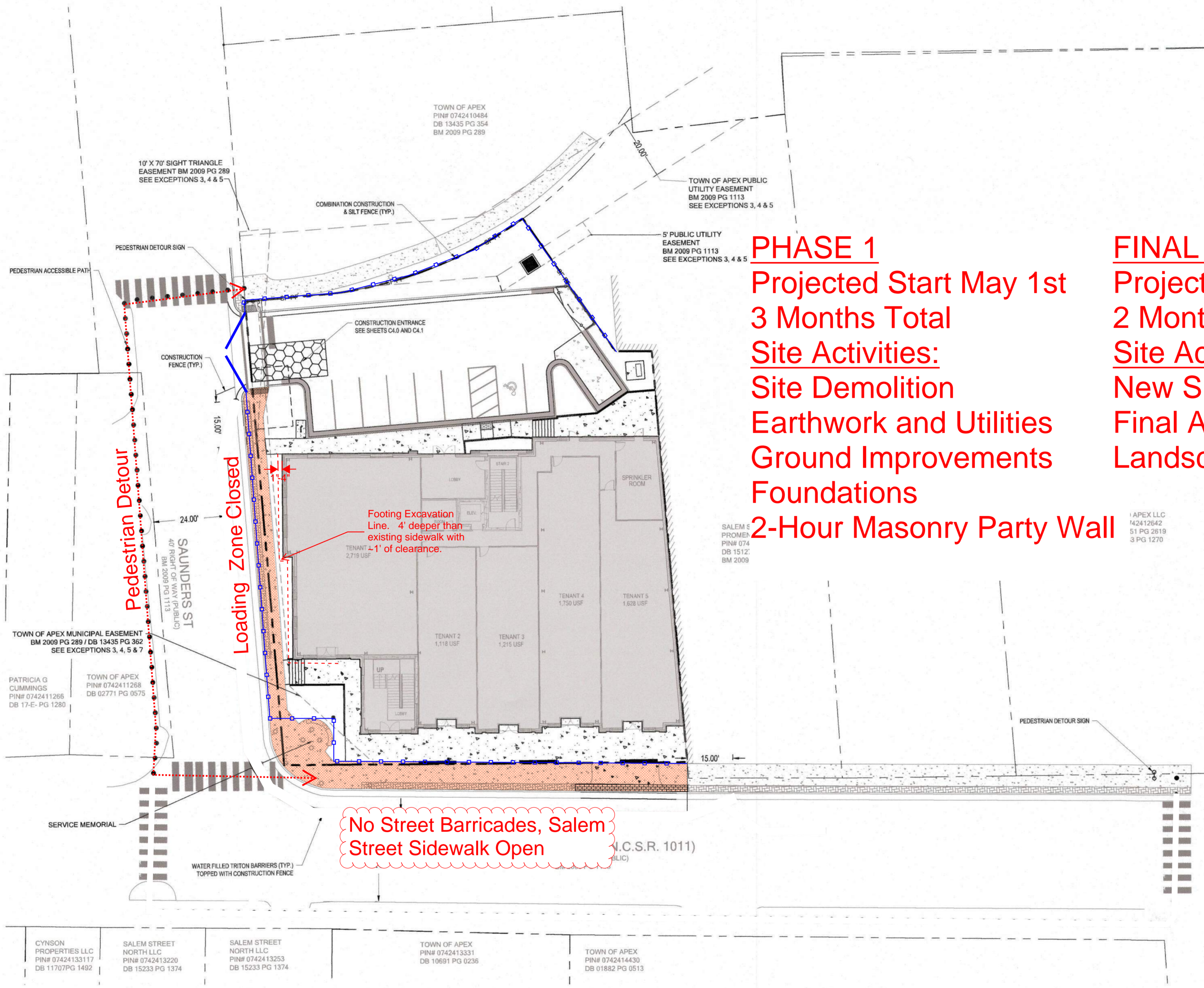


G:\NCAP\Projects\Oppidan\7646-00 - oppidan\plansheets\C2-2 - PEDESTRIAN.dwg Layout: 1/29/2021 9:24:08 AM



PHASE 1
 Projected Start May 1st
 3 Months Total
 Site Activities:
 Site Demolition
 Earthwork and Utilities
 Ground Improvements
 Foundations
 2-Hour Masonry Party Wall

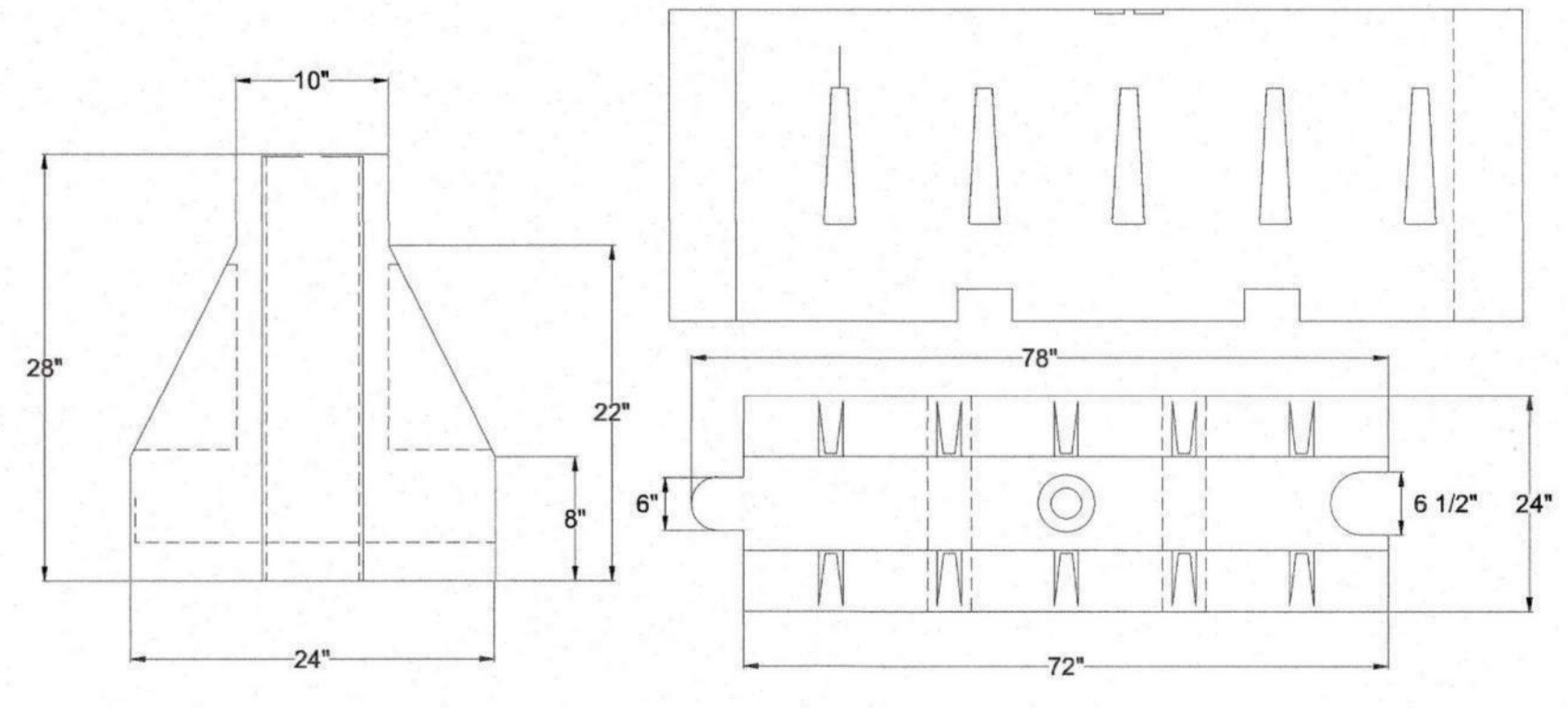
FINAL PHASE
 Projected Start February 1
 2 Months Total
 Site Activities:
 New Sidewalks
 Final Asphalt Paving
 Landscaping Installation

NOTES:

1. ALL SIDEWALKS MUST BE ACCESSIBLE TO PERSONS WHO ARE BLIND, HAVE LOW VISION AND PEOPLE WITH MOBILITY DISABILITIES. PEDESTRIAN EXISTING ROUTES AND ALTERNATE PEDESTRIAN ROUTES DURING CONSTRUCTION WILL BE REQUIRED TO BE COMPLIANT WITH THE PUBLIC RIGHTS OF WAY ACCESSIBILITY GUIDELINES (PROWAG), 2010 ADA STANDARDS FOR ACCESSIBLE DESIGN AND THE MANUAL ON UNIFORM TRAFFIC CONTROL DEVICES (MUTCD).
2. IF UNFORESEEN CONDITIONS DEVELOP DURING CONSTRUCTION, REFER TO "TOWN OF APEX UNIFIED DEVELOPMENT ORDINANCE" AND CONTACT PUBLIC WORKS DEPARTMENT FOR FURTHER GUIDANCE.
3. PRIOR TO START OF CONSTRUCTION, THE CONTRACTOR SHALL SCHEDULE A PRE-CONSTRUCTION MEETING WITH THE TOWN OF APEX PUBLIC WORKS DEPARTMENT / TRANSPORTATION FIELD SERVICES STAFF TO REVIEW THE SPECIFIC COMPONENTS OF THE PLAN AND OPERATION OF THESE FACILITIES DURING CONSTRUCTION. CONTACT (919) 249-3437 TO SET UP THE MEETING.
4. THE CONTRACTOR SHALL CONDUCT THE WORK IN A SAFE MANNER AND WITH MINIMAL IMPACT TO TRAFFIC.
5. THE CONTRACTOR SHALL BE RESPONSIBLE FOR ALL TRAFFIC CONTROL AND SHALL ADHERE TO THE PROVISIONS OF THE MUTCD (MOST CURRENT EDITION).
6. EXISTING PUBLIC STREETS OR HIGHWAYS SHALL BE KEPT OPEN TO TRAFFIC AT ALL TIMES BY THE CONTRACTOR UNLESS PERMISSION TO CLOSE THE STREETS, OR PORTIONS THEREOF, IS GRANTED BY THE TOWN OF APEX. THE TOWN OF APEX POLICE DEPARTMENT MUST ALSO BE CONTACTED BY THE CONTRACTOR A MINIMUM OF 24 HOURS BEFORE ANY STREETS ARE FULLY OR PARTIALLY CLOSED. PROPER AND SUFFICIENT BARRICADES, LIGHTS, SIGNING, AND OTHER PROTECTIVE DEVICES SHALL BE REQUIRED TO BE INSTALLED WHEN DEEMED NECESSARY BY THE POLICE DEPARTMENT OR ENGINEER.
7. PRIOR TO CONSTRUCTION BEGINNING, ALL SIGNAGE AND TRAFFIC CONTROL SHALL BE IN PLACE.
8. SEE DETAIL 1101.01 ON SHEET C8.01 FOR SIGN LOCATION PRIOR TO CONSTRUCTION.

TRAFFIC MANAGEMENT LEGEND

- WATER FILLED TRITON BARRIERS
- PEDESTRIAN ACCESSIBLE PATH



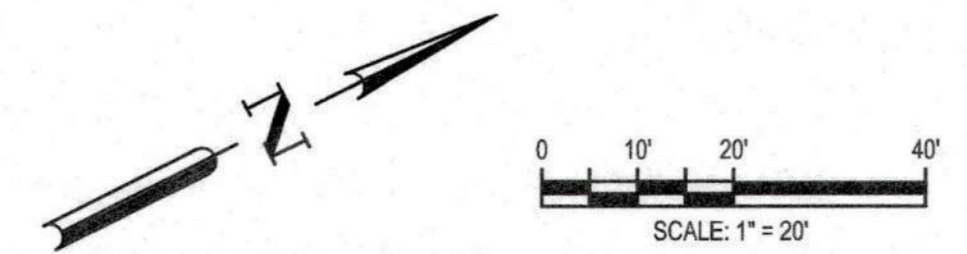
WATER FILLED TRITON BARRIER



Know what's below.
Call before you dig.

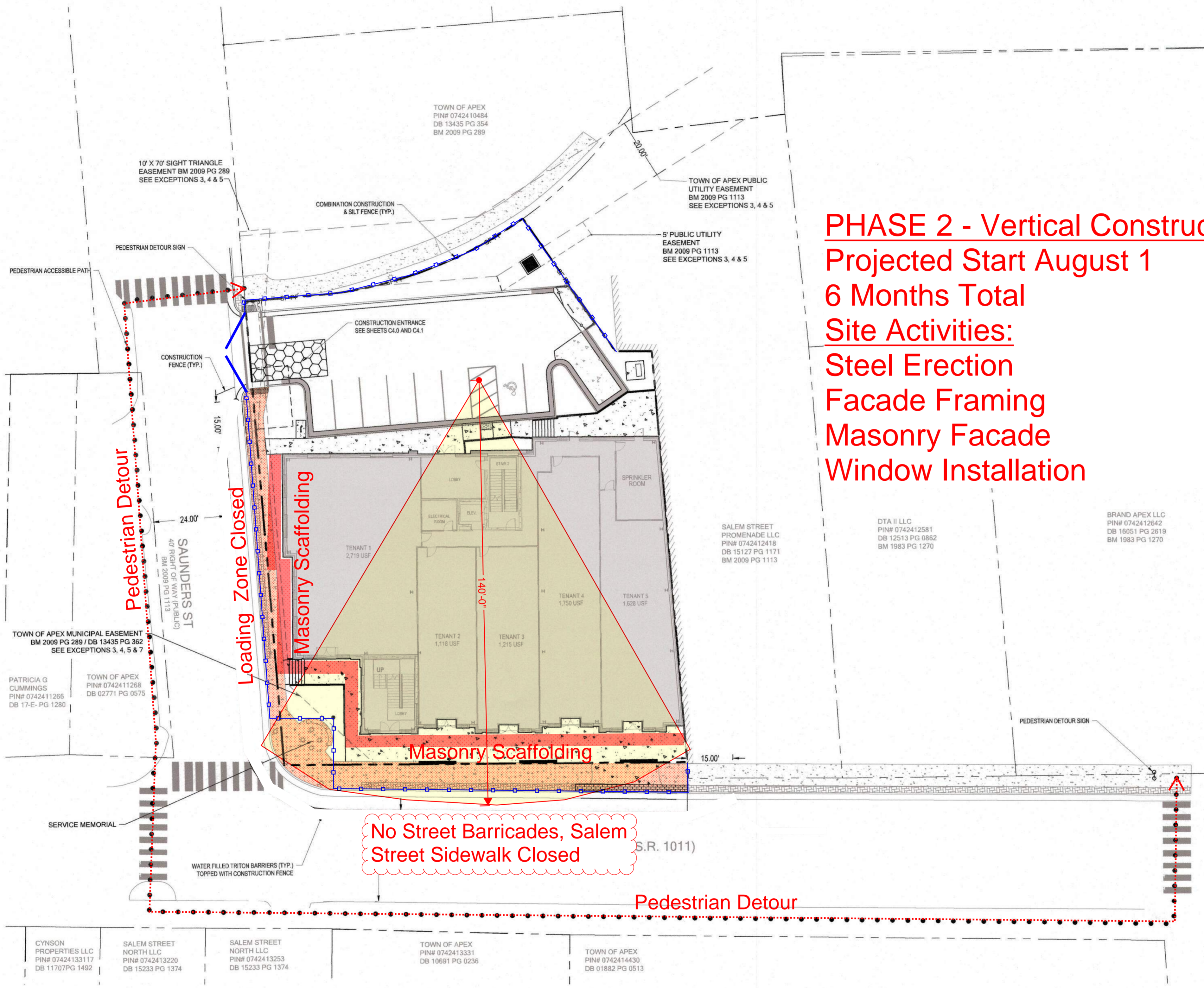
The signatures affixed below certify that this sheet has been reviewed and approved solely per the certifications signed on the cover sheet of these construction plans.

Approved rdillon 02/22/2021 3:53:23 PM	N/A jvan 02/16/2021 12:39:34 PM
Public Works - Transportation N/A sewens 02/22/2021 11:36:05 AM	Water Resources - Stormwater N/A bale 03/01/2021 03:03:44 AM
Building Inspections N/A jillien 02/22/2021 1:40:01 PM	Planning N/A brennan 02/16/2021 04:40:10 PM
Water Resources - Utility Engineering N/A rsmith 02/16/2021 3:32:23 PM	Planning - Transportation N/A khuegerich 02/16/2021 1:57:15 PM
Electric N/A jvan 02/16/2021 12:39:39 PM	Fire N/A brejocke 02/15/2021 12:10:40 PM
Water Resources - Soil & Erosion Control N/A	Parks, Recreation & Cultural Resources N/A



PER TOWN COMMENTS 01/29/2021 DATE	DESCRIPTION 01/06/2021 PER TOWN COMMENTS
DESIGNED BY: SP/TW	DRAWN BY: SP
REVIEWED BY: CT	
 5440 WADE PARK BLVD, SUITE 102 RALEIGH NC 27607 WWW.BCEINC.COM NC LICENSE #C-4397 @2020	
OPPIDAN INVESTMENT COMPANY 2000 REGENCY PARKWAY, SUITE 405 CARY, NC 27518	
SALEM STREET MIXED USE 209 N. SALEM STREET APEX, NC	
TRAFFIC MANAGEMENT PLAN	
FILE NUMBER: 7646-00 DATE: 11/30/2020 C2-2	

G:\NCAP\Projects\Oppidan\7646-00 - DWG\plansheets\C2-2 - PEDESTRIAN.dwg Layout: 1/29/2021 9:24:08 AM

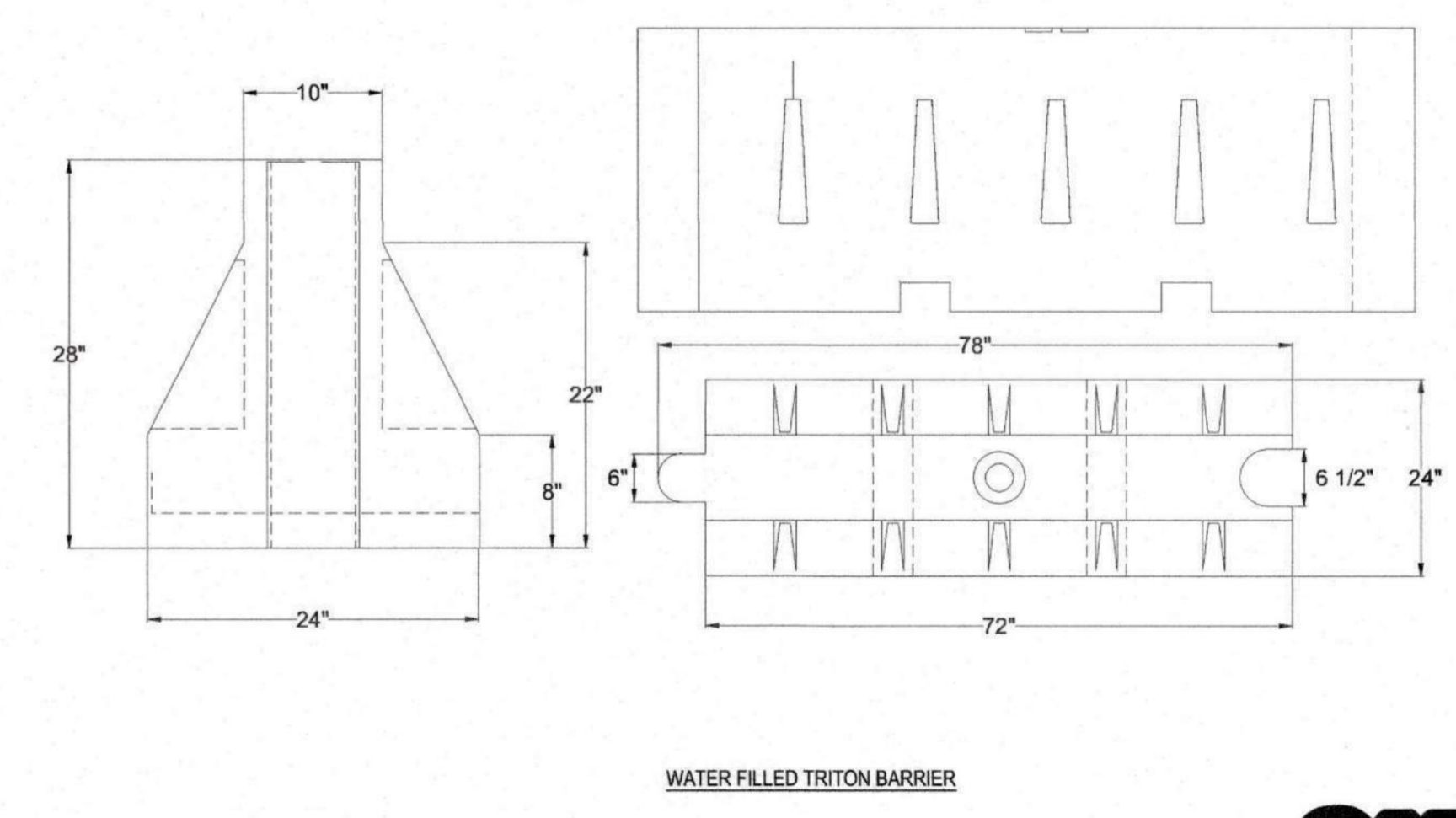
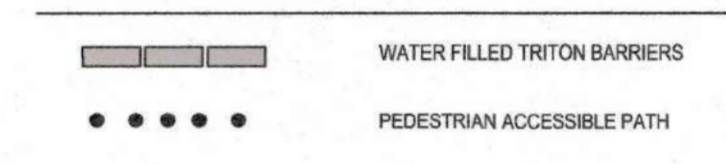


PHASE 2 - Vertical Construction
 Projected Start August 1
 6 Months Total
 Site Activities:
 Steel Erection
 Facade Framing
 Masonry Facade
 Window Installation

NOTES:

1. ALL SIDEWALKS MUST BE ACCESSIBLE TO PERSONS WHO ARE BLIND, HAVE LOW VISION AND PEOPLE WITH MOBILITY DISABILITIES. PEDESTRIAN EXISTING ROUTES AND ALTERNATE PEDESTRIAN ROUTES DURING CONSTRUCTION WILL BE REQUIRED TO BE COMPLIANT WITH THE PUBLIC RIGHTS OF WAY ACCESSIBILITY GUIDELINES (PROWAG), 2010 ADA STANDARDS FOR ACCESSIBLE DESIGN AND THE MANUAL ON UNIFORM TRAFFIC CONTROL DEVICES (MUTCD).
2. IF UNFORESEEN CONDITIONS DEVELOP DURING CONSTRUCTION, REFER TO "TOWN OF APEX UNIFIED DEVELOPMENT ORDINANCE" AND CONTACT PUBLIC WORKS DEPARTMENT FOR FURTHER GUIDANCE.
3. PRIOR TO START OF CONSTRUCTION, THE CONTRACTOR SHALL SCHEDULE A PRE-CONSTRUCTION MEETING WITH THE TOWN OF APEX PUBLIC WORKS DEPARTMENT / TRANSPORTATION FIELD SERVICES STAFF TO REVIEW THE SPECIFIC COMPONENTS OF THE PLAN AND OPERATION OF THESE FACILITIES DURING CONSTRUCTION. CONTACT (919) 249-3437 TO SET UP THE MEETING.
4. THE CONTRACTOR SHALL CONDUCT THE WORK IN A SAFE MANNER AND WITH MINIMAL IMPACT TO TRAFFIC.
5. THE CONTRACTOR SHALL BE RESPONSIBLE FOR ALL TRAFFIC CONTROL AND SHALL ADHERE TO THE PROVISIONS OF THE MUTCD (MOST CURRENT EDITION).
6. EXISTING PUBLIC STREETS OR HIGHWAYS SHALL BE KEPT OPEN TO TRAFFIC AT ALL TIMES BY THE CONTRACTOR UNLESS PERMISSION TO CLOSE THE STREETS, OR PORTIONS THEREOF, IS GRANTED BY THE TOWN OF APEX. THE TOWN OF APEX POLICE DEPARTMENT MUST ALSO BE CONTACTED BY THE CONTRACTOR A MINIMUM OF 24 HOURS BEFORE ANY STREETS ARE FULLY OR PARTIALLY CLOSED. PROPER AND SUFFICIENT BARRICADES, LIGHTS, SIGNING, AND OTHER PROTECTIVE DEVICES SHALL BE REQUIRED TO BE INSTALLED WHEN DEEMED NECESSARY BY THE POLICE DEPARTMENT OR ENGINEER.
7. PRIOR TO CONSTRUCTION BEGINNING, ALL SIGNAGE AND TRAFFIC CONTROL SHALL BE IN PLACE.
8. SEE DETAIL 1101.01 ON SHEET C8.01 FOR SIGN LOCATION PRIOR TO CONSTRUCTION.

TRAFFIC MANAGEMENT LEGEND



The signatures affixed below certify that this sheet has been reviewed and approved solely per the certifications signed on the cover sheet of these construction plans.

Approved rdillon 02/22/2021 3:53:23 PM	N/A jwhe 02/16/2021 12:39:34 PM
Public Works - Transportation N/A sewens 02/22/2021 11:36:05 AM	Water Resources - Stormwater N/A bale 02/16/2021 03:02:44 AM
Building Inspections N/A jillien 02/22/2021 1:40:01 PM	Planning N/A bale 02/16/2021 03:02:44 AM
Water Resources - Utility Engineering N/A rsmith 02/16/2021 3:32:23 PM	Planning - Transportation N/A khuengerch 02/16/2021 1:57:15 PM
Electric N/A jwhe 02/16/2021 12:39:39 PM	Fire N/A breipcke 02/15/2021 12:10:40 PM
Water Resources - Soil & Erosion Control N/A	Parks, Recreation & Cultural Resources N/A

DESIGNED BY: SP/TW DRAWN BY: SP REVIEWED BY: CT	PER TOWN COMMENTS 01/29/2021 PER TOWN COMMENTS 01/06/2021 DATE REV DESCRIPTION
<p>5440 WADE PARK BLVD, SUITE 102 RALEIGH NC 27607 WWW.BCEINC.COM NC LICENSE #C-4397 @2020</p>	
OPPIDAN INVESTMENT COMPANY 2000 REGENCY PARKWAY, SUITE 405 CARY, NC 27518	
SALEM STREET MIXED USE 209 N. SALEM STREET APEX, NC	
TRAFFIC MANAGEMENT PLAN	
FILE NUMBER: 7646-00 DATE: 11/30/2020 C2-2	