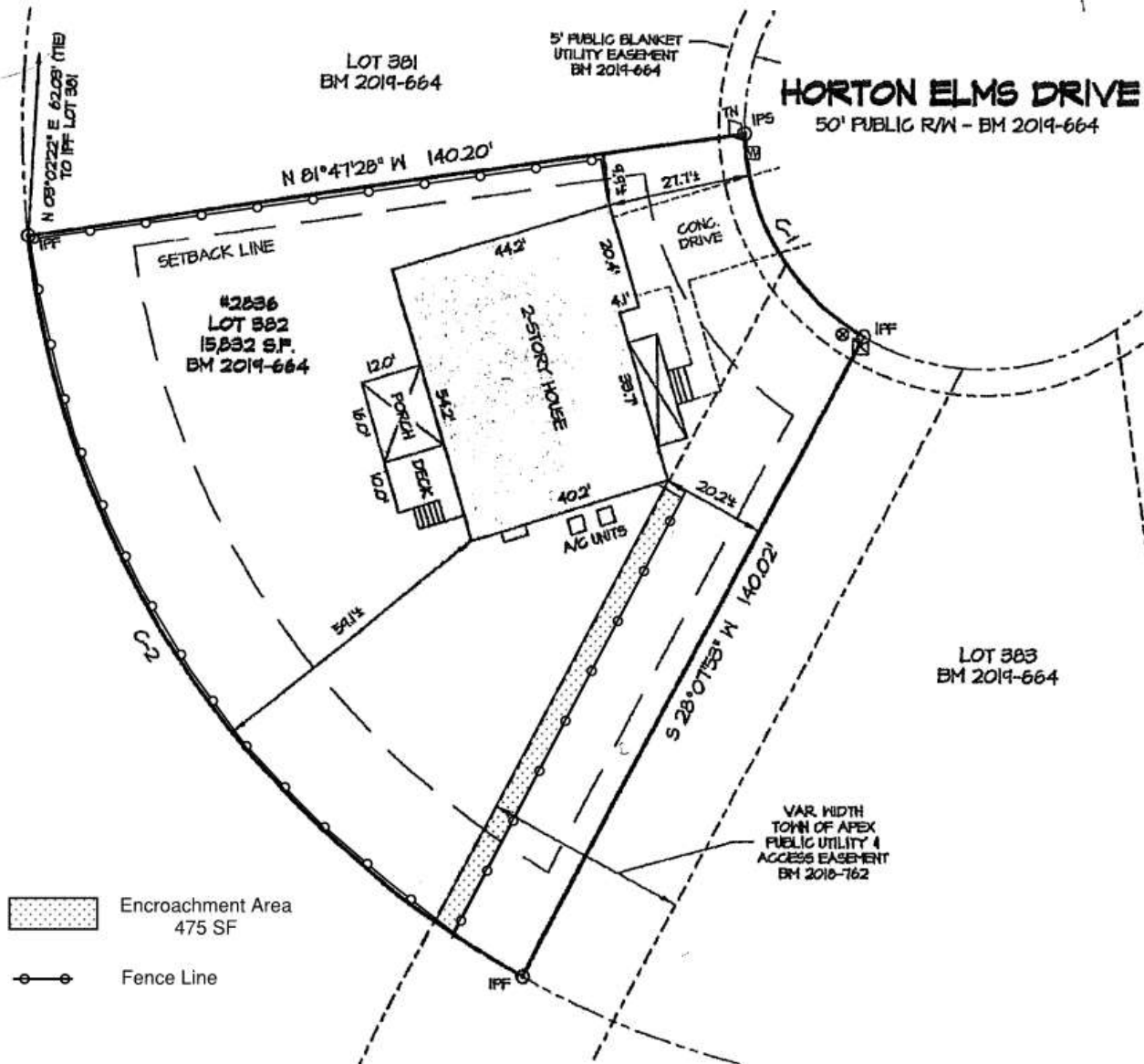


Exhibit A

2836 Horton Elms Drive

Jordan Pointe Subdivision



THIS MAY NOT BE A CERTIFIED SURVEY AND HAS NOT BEEN REVIEWED BY LOCAL GOVERNMENT AGENCY FOR COMPLIANCE WITH ANY APPLICABLE LAND DEVELOPMENT REGULATIONS AND HAS NOT BEEN REVIEWED FOR COMPLIANCE WITH RECORDING REQUIREMENTS FOR PLATS